

T5N, R62W, 6th P.M.

BILL BARRETT CORPORATION

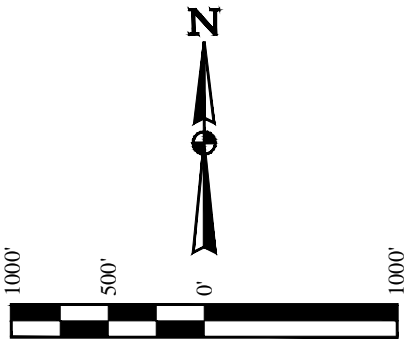
ANSCHUTZ STATE 5-62-26 25 NWSW PAD #5-62-26-3340BH2
NW 1/4 SW 1/4, SECTION 26, T5N, R62W, 6th P.M.
WELD COUNTY, COLORADO

BASIS OF BEARINGS

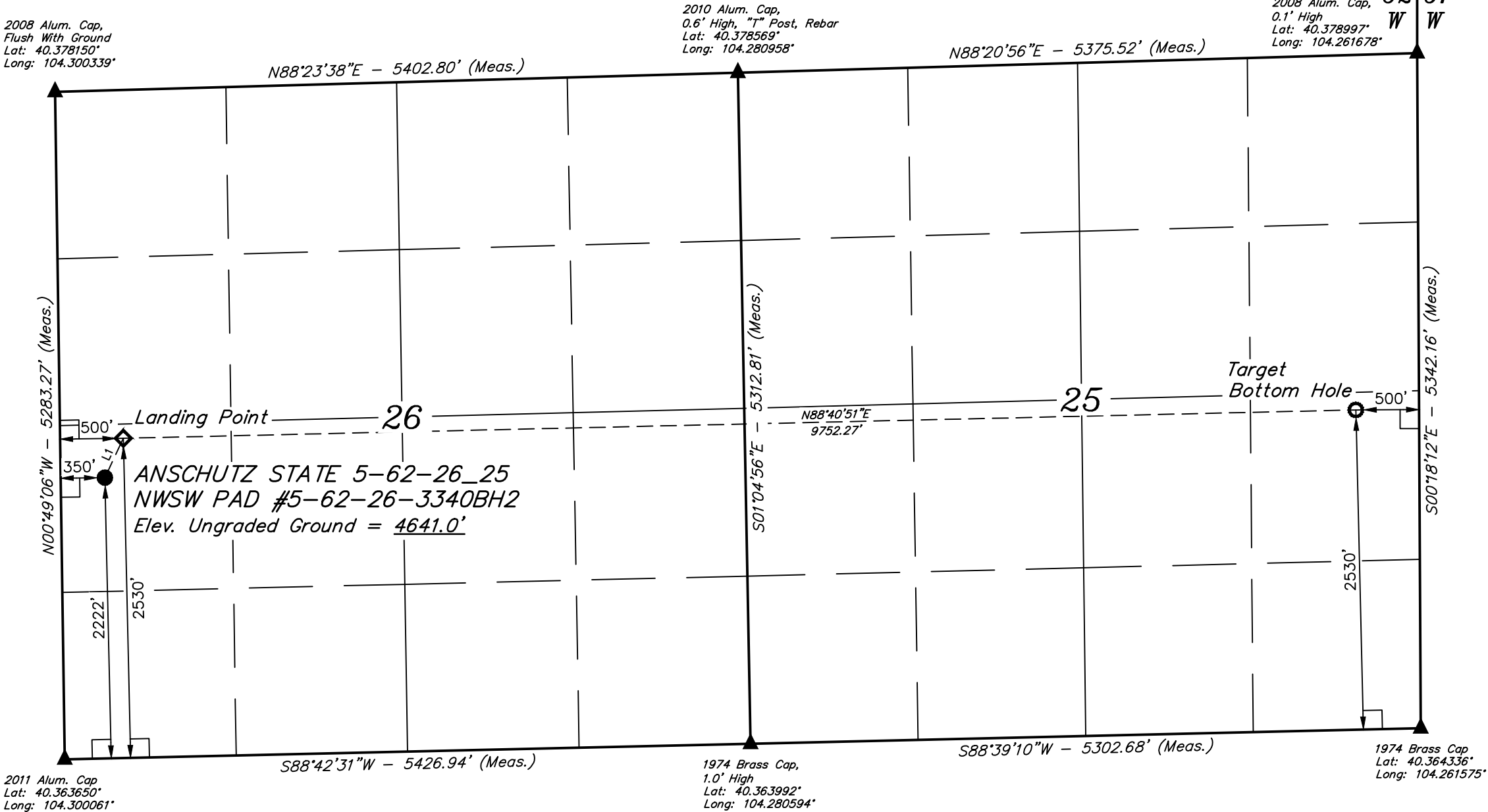
BASIS OF BEARINGS IS A G.P.S. OBSERVATION

BASIS OF ELEVATION

SPOT ELEVATION LOCATED AT THE NORTHEAST CORNER
OF SECTION 24, T5N, R62W, 6th. P.M. TAKEN FROM THE POINT OF
ROCKS, QUADRANGLE, COLORADO, WELD COUNTY, 7.5 MINUTE
QUAD (TOPOGRAPHIC MAP) PUBLISHED BY THE UNITED STATES
DEPARTMENT OF THE INTERIOR, GEOLOGICAL SURVEY. SAID
ELEVATION IS MARKED AS BEING 4530 FEET.



LINE TABLE		
LINE	DIRECTION	LENGTH
L1	N25°03'17"E	343.78'



CERTIFICATE

THIS IS TO CERTIFY THAT THE ABOVE PLAT WAS PREPARED FROM FIELD
NOTES OF ACTUAL SURVEYS MADE BY ME OR UNDER MY SUPERVISION
AND THAT THE SAME ARE TRUE AND CORRECT TO THE BEST OF MY
KNOWLEDGE AND BELIEF.

REGISTERED LAND SURVEYOR
REGISTRATION NO. 28285
STATE OF COLORADO

06-30-14

PDOP = 1.8

LEGEND:

- 90° SYMBOL
- PROPOSED WELLHEAD.
- LANDING POINT
- TARGET BOTTOM HOLE.
- SECTION CORNERS LOCATED.

NAD 83 (TARGET BOTTOM HOLE)	NAD 83 (LANDING POINT)	NAD 83 (SURFACE LOCATION)
LATITUDE = 40°22'16.49" (40.371247)	LATITUDE = 40°22'14.25" (40.370625)	LATITUDE = 40°22'11.17" (40.369769)
LONGITUDE = 104°15'48.30" (104.263417)	LONGITUDE = 104°17'54.24" (104.298400)	LONGITUDE = 104°17'56.12" (104.298922)
NAD 27 (TARGET BOTTOM HOLE)	NAD 27 (LANDING POINT)	NAD 27 (SURFACE LOCATION)
LATITUDE = 40°22'16.56" (40.371267)	LATITUDE = 40°22'14.32" (40.370644)	LATITUDE = 40°22'11.24" (40.369789)
LONGITUDE = 104°15'46.48" (104.262911)	LONGITUDE = 104°17'52.41" (104.297892)	LONGITUDE = 104°17'54.29" (104.298414)
STATE PLANE NAD 83	STATE PLANE NAD 83	STATE PLANE NAD 83
N: 1380488.29 E: 3344535.89	N: 1380127.76 E: 3334792.83	N: 1379814.40 E: 3334651.65
STATE PLANE NAD 27	STATE PLANE NAD 27	STATE PLANE NAD 27
N: 380490.16 E: 2344685.95	N: 380129.62 E: 2334942.87	N: 379816.28 E: 2334801.68



UELS, LLC
Corporate Office * 85 South 200 East
Vernal, UT 84078 * (435) 789-1017

SURVEYED BY: GREG WEIMER, C.J.	DATE: 04-30-14
DRAWN BY: J.S.	DATE DRAWN: 06-02-14
SCALE: 1" = 1000'	REVISED: 00-00-00

WELL LOCATION PLAT