

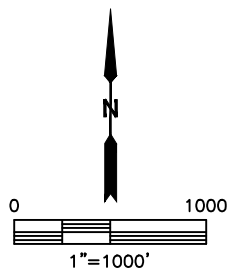
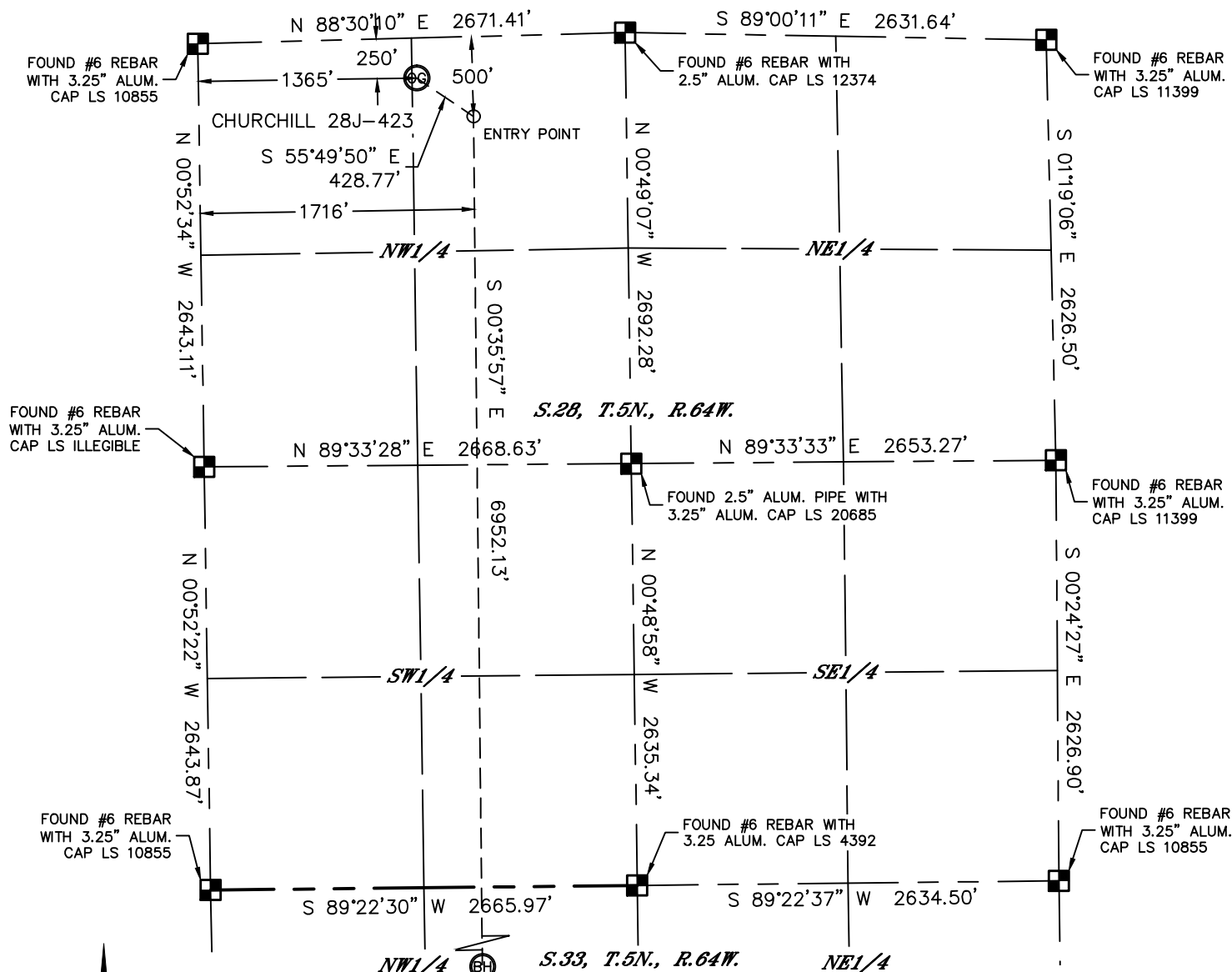


Lat40°, Inc. 1635 Foxtrail Drive, Suite 325 Loveland, CO 970-776-3321

WELL LOCATION CERTIFICATE

THIS MAP DOES NOT REPRESENT A BOUNDARY SURVEY

SECTION: 28
TOWNSHIP: 5N
RANGE: 64W



In accordance with a request from Jake Bragg with PDC ENERGY Lat40°, Inc. has determined the surface location of the CHURCHILL 28J-423 to be 250' from the NORTH line and 1365' from the WEST line as measured at right angles from the section lines of Section 28, Township 5 North, Range 64 West and the bottom hole to be 2139' from the NORTH line and 1672' from the WEST line as measured at right angles from the section lines of Section 33, Township 5 North, Range 64 West of the Sixth Principal Meridian, County of Weld, State of Colorado.

I hereby state that this Well Location Certificate was prepared by me, or under my direct supervision, that the fieldwork was completed on 11/7/2013, for and on behalf of PDC ENERGY. That this is not a Land Survey Plat or an Improvement Survey Plat, and that it is not to be relied upon for establishment of fence, building, or other future improvement lines.

SURFACE LOCATION
LAT: 40.37691°N
LONG: 104.55939°W
PDOP: 2.0
ELEV: 4633'
1/4,1/4: NE1/4NW1/4

BOTTOM HOLE
LAT: 40.35716°N
LONG: 104.55813°W

ENTRY POINT
LAT: 40.37624°N
LONG: 104.55813°W

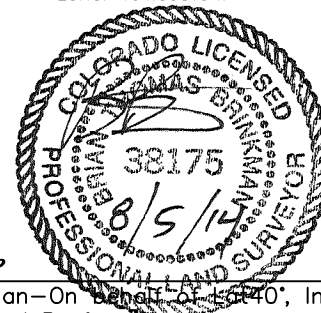
LEGEND

- = ALIQUOT MONUMENT AS DESCRIBED
- = CALCULATED POSITION

SHEET 1 OF 2

Brian T. Brinkman—On Behalf of Lat40°, Inc.
Colorado Licensed Professional
Land Surveyor No. 38175

DATE: 8/05/2014
PROJECT#: 2013151



NOTE:

- 1) Bearings shown are Grid Bearings of the Colorado State Plane Coordinate System, North Zone, North American Datum 1983/2007. The lineal dimensions as contained herein are based upon the "U.S. Survey Foot."
- 2) Ground elevations are based on an observed GPS elevation (NAVD 1988 DATUM).
- 3) IMPROVEMENTS: See LOCATION DRAWING for all visible improvements within 500' of disturbed area.
- 4) SURFACE USE: RANGELAND
- 5) INSTRUMENT OPERATOR: BRIAN ROTTINGHAUS
- 6) NEAREST CULTURAL ITEMS:
BUILDING: ±665' NE
BUILDING UNIT: ±740' N
HIGH OCCUPANCY BUILDING UNIT: ±2200' NE
DESIGNATED OUTSIDE ACTIVITY AREA: 5280'+
PUBLIC ROAD: (RANGEVIEW DRIVE) 862' N
ABOVEGROUND UTILITY: 287' N
RAILROAD: ±2900' N
PROPERTY LINE: 250' N

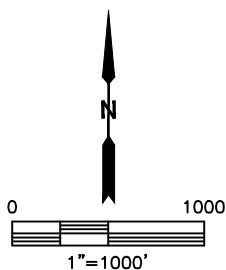
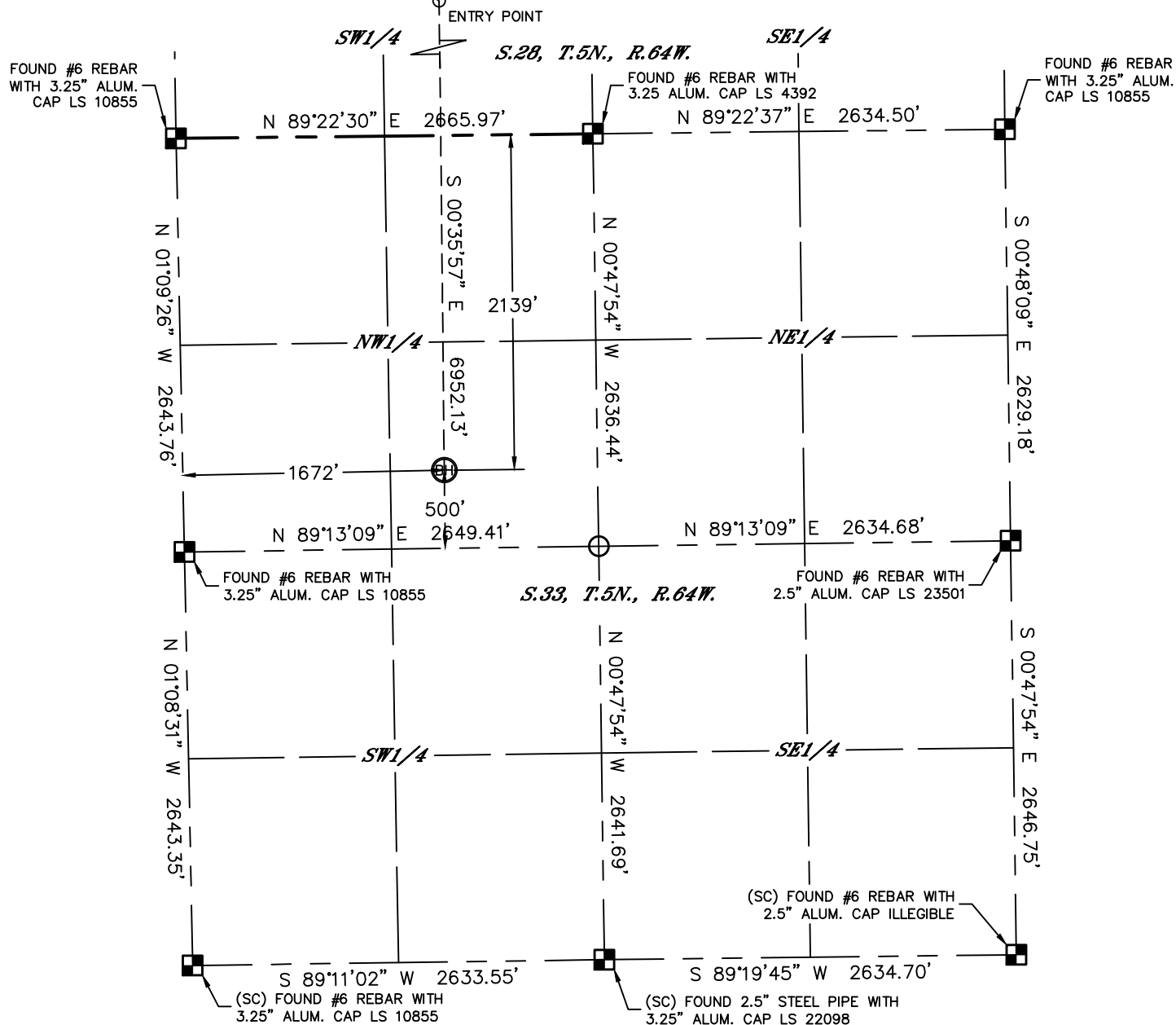
Lat40°, Inc. 1635 Foxtrail Drive, Suite 325 Loveland, CO 970-776-3321

WELL LOCATION CERTIFICATE



SECTION: 28
TOWNSHIP: 5N
RANGE: 64W

THIS MAP DOES NOT REPRESENT A BOUNDARY SURVEY

CHURCHILL
28J-423



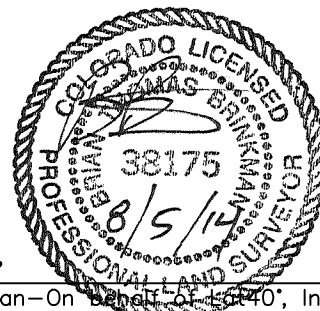
LEGEND

-  = ALIQUOT MONUMENT AS DESCRIBED
 = CALCULATED POSITION

SHEET 2 OF 2

Brian T. Brinkman—On Behalf of L&L40, Inc.
Colorado Licensed Professional Land Surveyor No. 38175
DATE: 8/05/2010
PROJECT#: 2010-0001

DATE: 8/05/2014
PROJECT#: 2013151



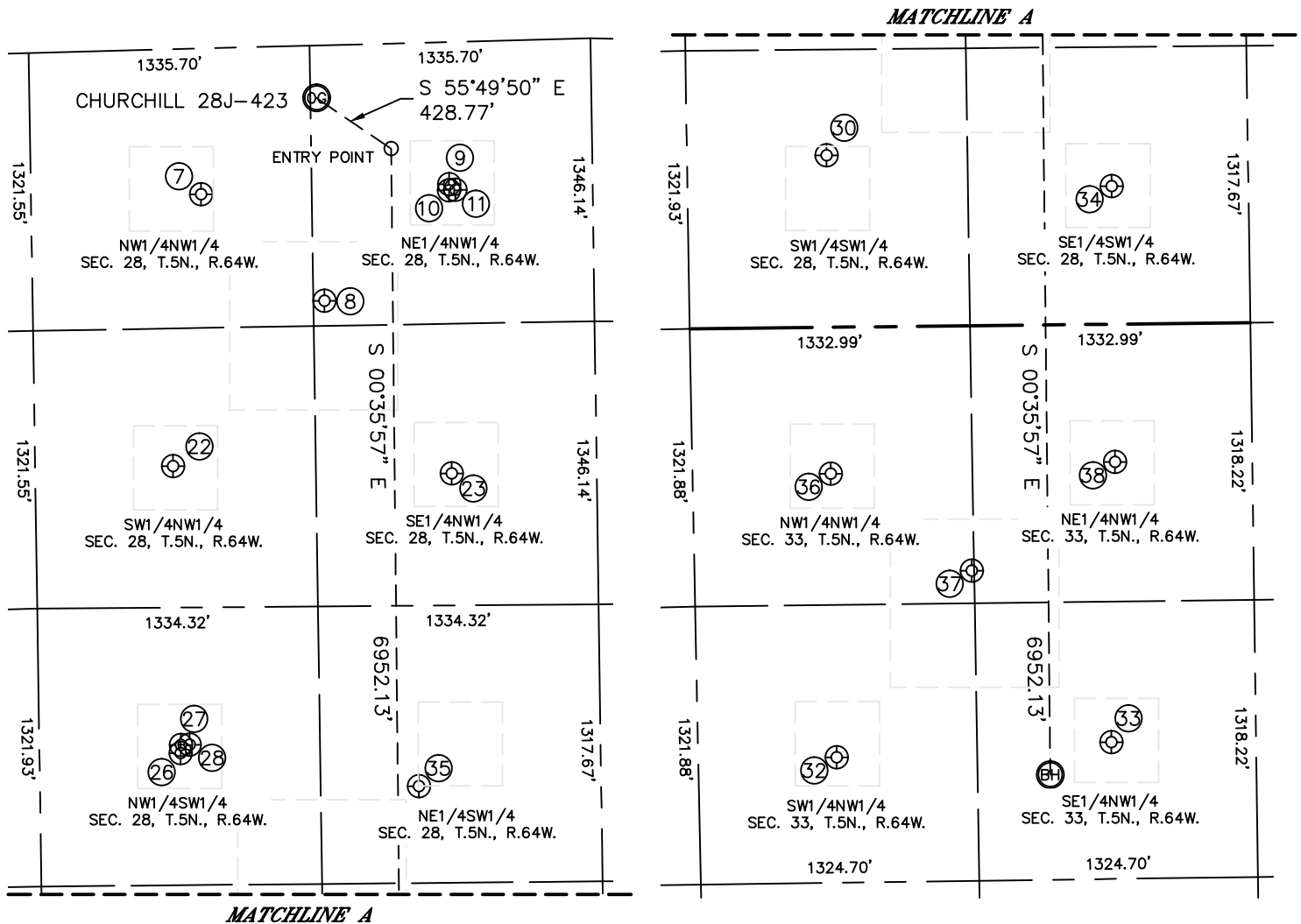


Lat40°, Inc. 1635 Foxtrail Drive, Suite 325 Loveland, CO 970-776-3321

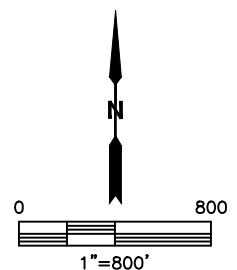
SITE SKETCH

CHURCHILL 28J-423

SECTION: 28
TOWNSHIP: 5N
RANGE: 64W



WELL NO.	WELL NAME	SHL FOOTAGE				SHL LAT°	SHL LONG°	PDOP	ELEV (FT.)	1/4/1/4
7	CHURCHILL 28A-1	693	FNL	809	FWL	40.37567	-104.56138	2.0	4651	NWNW
8	CHURCHILL 5	1215	FNL	1387	FWL	40.37426	-104.55929	1.9	4639	NENW
9	CHURCHILL 2-6B	676	FNL	1988	FWL	40.37577	-104.55715	1.9	4629	NENW
10	CHURCHILL 28-2	706	FNL	1987	FWL	40.37569	-104.55715	2.3	4629	NENW
11	CHURCHILL 2-7I	704	FNL	2018	FWL	40.37569	-104.55704	1.9	4629	NENW
22	CHURCHILL 2 28A	1982	FNL	656	FWL	40.37213	-104.56190	3.0	4657	SENW
23	CHURCHILL 28-1	2051	FNL	1979	FWL	40.37199	-104.55715	2.8	4650	SENW
26	ADAMSON 5	1949	FSL	671	FWL	40.36838	-104.56183	2.3	4674	NWSW
27	ADAMSON 28-1	1988	FSL	673	FWL	40.36848	-104.56182	2.3	4673	NWSW
28	ADAMSON 1-6I	1989	FSL	713	FWL	40.36849	-104.56168	2.3	4673	NWSW
30	ADAMSON 28-2	818	FSL	663	FWL	40.36527	-104.56184	3.1	4674	SWSW
32	BAILEY 33-2	596	FSL	657	FWL	40.35742	-104.56177	1.8	4712	SWNW
33	BAILEY 33-1	650	FSL	1965	FWL	40.35757	-104.55708	2.1	4687	SENW
34	WELSH 1	657	FSL	2017	FWL	40.36483	-104.55698	1.9	4648	SESW
35	WELCH B 28-11	1779	FSL	1801	FWL	40.36791	-104.55777	1.8	4641	NESW
36	WONENBERG 1	1945	FSL	658	FWL	40.36112	-104.56182	1.8	4699	NWNW
37	HOFFMAN B 33-19	1475	FSL	1318	FWL	40.35983	-104.55943	1.4	4691	NWNW
38	WONENBERG B33-3	1982	FSL	2010	FWL	40.36123	-104.55697	1.5	4664	NENW



DATE: 8/05/2014
PROJECT#: 2013151