



**Bill Barrett Corporation**

## **Bill Barrett Corp.**

**Weld Co., CO**

**Sec.26-T5N-R62W**

**Anschutz State 5-62-26-1724CH2**

**Wellbore #1**

**Plan: Design #1**

## **Standard Planning Report**

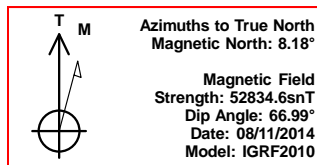
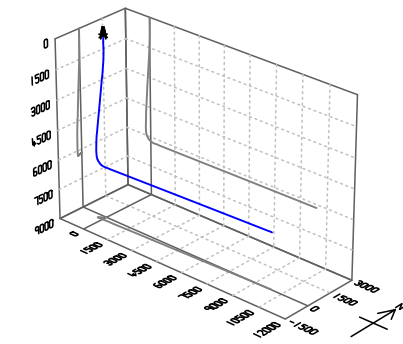
**11 August, 2014**

# **Archer**



Bill Barrett Corp.  
Project: Weld Co., CO  
Site: Sec.26-T5N-R62W  
Well: Anschutz State 5-62-26-1724CH2  
Wellbore: Wellbore #1  
Design: Design #1  
Lat: 40° 22' 26.241 N  
Long: 104° 17' 56.411 W  
Pad GL: 4640.00  
KB: WELL @ 4656.00usft (Original Well Elev)

# Archer



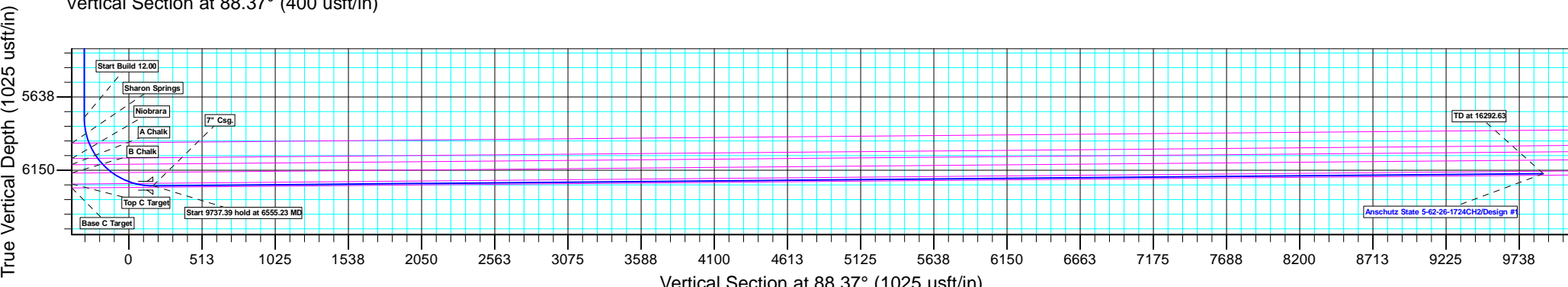
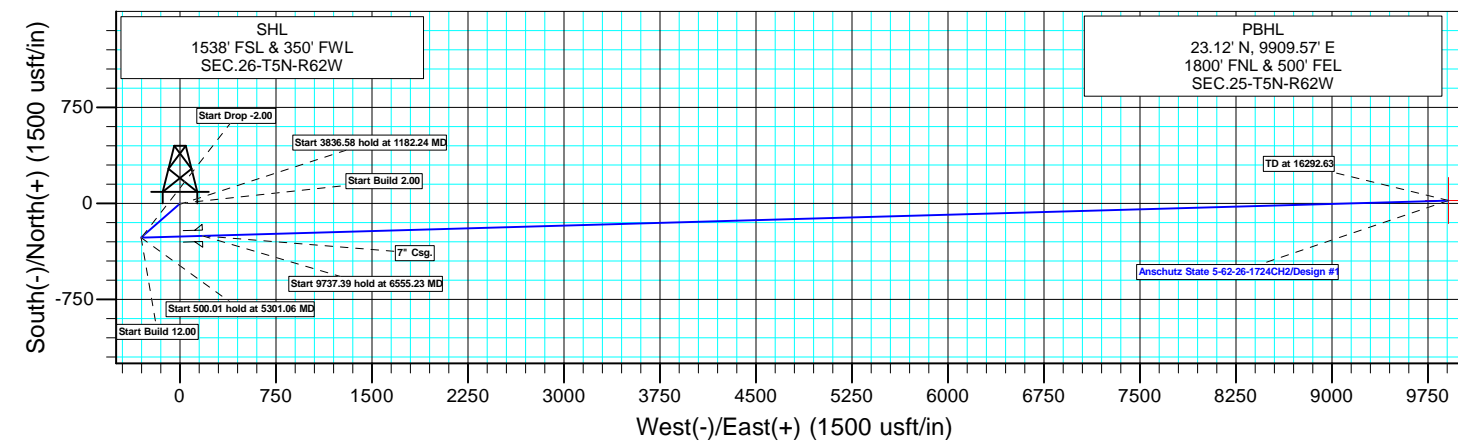
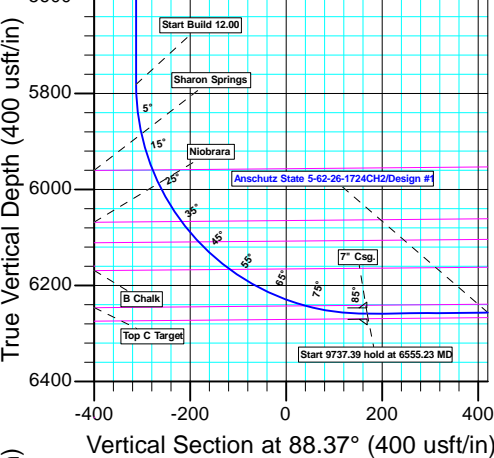
SECTION DETAILS										
MD	Inc	Azi	TVD	+N/-S	+E/-W	Dleg	TFace	VSec	Annotation	
0.00	0.00	0.00	0.00	0.00	0.00	0.00	0.00	0.00		
900.00	0.00	0.00	900.00	0.00	0.00	0.00	0.00	0.00	Start Build 2.00	
1182.24	5.64	228.83	1181.78	-9.15	-10.46	2.00	228.83	-10.71	Start 3836.58 hold at 1182.24 MD	
5018.82	5.64	228.83	4999.76	-257.57	-294.51	0.00	0.00	-301.72	Start Drop -2.00	
5301.06	0.00	0.00	5281.54	-266.72	-304.97	2.00	180.00	-312.43	Start 500.01 hold at 5301.06 MD	
5801.07	0.00	0.00	5781.55	-266.72	-304.97	0.00	0.00	-312.43	Start Build 12.00	
6555.23	90.50	88.37	6259.00	-253.06	176.47	12.00	88.37	169.20	Start 9737.39 hold at 6555.23 MD	
16292.63	90.50	88.37	6174.00	23.12	9909.57	0.00	0.00	9906.22	TD at 16292.63	

WELL DETAILS: Anschutz State 5-62-26-1724CH2							
+N/-S	+E/-W	Northing	Ground Level:	4640.00	Latitude	Longitude	Slot
0.00	0.00	1381338.636	Easting	3334608.373	40° 22' 26.241 N	104° 17' 56.411 W	

PROJECT DETAILS: Weld Co., CO	
Geodetic System:	US State Plane 1983
Datum:	North American Datum 1983
Ellipsoid:	GRS 1980
Zone:	Colorado Northern Zone
System Datum:	Mean Sea Level

CASING DETAILS		
TVD	MD	Name
6259.00	6555.23	7" Csg.

WELLBORE TARGET DETAILS (LAT/LONG)						
Name	TVD	+N/-S	+E/-W	Latitude	Longitude	Shape Point
Anschutz State 5-62-26-1724CH2 tgt	6174.00	23.12	9909.57	40° 22' 26.450 N	104° 15' 48.370 W	



<b>Database:</b>	EDMDBBW	<b>Local Co-ordinate Reference:</b>	Well Anschutz State 5-62-26-1724CH2
<b>Company:</b>	Bill Barrett Corp.	<b>TVD Reference:</b>	WELL @ 4656.00usft (Original Well Elev)
<b>Project:</b>	Weld Co., CO	<b>MD Reference:</b>	WELL @ 4656.00usft (Original Well Elev)
<b>Site:</b>	Sec.26-T5N-R62W	<b>North Reference:</b>	True
<b>Well:</b>	Anschutz State 5-62-26-1724CH2	<b>Survey Calculation Method:</b>	Minimum Curvature
<b>Wellbore:</b>	Wellbore #1		
<b>Design:</b>	Design #1		

<b>Project</b>	Weld Co., CO		
<b>Map System:</b>	US State Plane 1983	<b>System Datum:</b>	Mean Sea Level
<b>Geo Datum:</b>	North American Datum 1983		
<b>Map Zone:</b>	Colorado Northern Zone		

Site		Sec.26-T5N-R62W			
Site Position:		Northing:	1,382,286.736 usft	Latitude:	40° 22' 35.580 N
From:	Lat/Long	Easting:	3,334,831.533 usft	Longitude:	104° 17' 53.362 W
Position Uncertainty:	0.00 usft	Slot Radius:	13-3/16 "	Grid Convergence:	0.78 °

Well	Anschutz State 5-62-26-1724CH2					
Well Position	+N/-S	-944.99 usft	Northing:	1,381,338.636 usft	Latitude:	40° 22' 26.241 N
	+E/-W	-235.99 usft	Easting:	3,334,608.373 usft	Longitude:	104° 17' 56.411 W
Position Uncertainty		0.00 usft	Wellhead Elevation:	usft	Ground Level:	4,640.00 usft

<b>Wellbore</b>	Wellbore #1				
<b>Magnetics</b>	<b>Model Name</b>	<b>Sample Date</b>	<b>Declination (°)</b>	<b>Dip Angle (°)</b>	<b>Field Strength (nT)</b>
	IGRF2010	2014/08/11	8.18	66.99	52,835

<b>Design</b>	Design #1			
<b>Audit Notes:</b>				
<b>Version:</b>	<b>Phase:</b>	PLAN	<b>Tie On Depth:</b>	0.00
<b>Vertical Section:</b>	<b>Depth From (TVD) (usft)</b>	<b>+N/-S (usft)</b>	<b>+E/-W (usft)</b>	<b>Direction (°)</b>
	0.00	0.00	0.00	88.37

<b>Plan Sections</b>										
Measured Depth (usft)	Inclination (°)	Azimuth (°)	Vertical Depth (usft)	+N/-S (usft)	+E/-W (usft)	Dogleg Rate (°/100usft)	Build Rate (°/100usft)	Turn Rate (°/100usft)	TFO (°)	Target
0.00	0.00	0.00	0.00	0.00	0.00	0.00	0.00	0.00	0.00	
900.00	0.00	0.00	900.00	0.00	0.00	0.00	0.00	0.00	0.00	
1,182.24	5.64	228.83	1,181.78	-9.15	-10.46	2.00	2.00	0.00	228.83	
5,018.82	5.64	228.83	4,999.76	-257.57	-294.51	0.00	0.00	0.00	0.00	
5,301.06	0.00	0.00	5,281.54	-266.72	-304.97	2.00	-2.00	0.00	180.00	
5,801.07	0.00	0.00	5,781.55	-266.72	-304.97	0.00	0.00	0.00	0.00	
6,555.23	90.50	88.37	6,259.00	-253.06	176.47	12.00	12.00	0.00	88.37	Anschutz State 5-62-2
16,292.63	90.50	88.37	6,174.00	23.12	9,909.57	0.00	0.00	0.00	0.00	Anschutz State 5-62-2

<b>Database:</b>	EDMDBBW	<b>Local Co-ordinate Reference:</b>	Well Anschutz State 5-62-26-1724CH2
<b>Company:</b>	Bill Barrett Corp.	<b>TVD Reference:</b>	WELL @ 4656.00usft (Original Well Elev)
<b>Project:</b>	Weld Co., CO	<b>MD Reference:</b>	WELL @ 4656.00usft (Original Well Elev)
<b>Site:</b>	Sec.26-T5N-R62W	<b>North Reference:</b>	True
<b>Well:</b>	Anschutz State 5-62-26-1724CH2	<b>Survey Calculation Method:</b>	Minimum Curvature
<b>Wellbore:</b>	Wellbore #1		
<b>Design:</b>	Design #1		

Planned Survey									
Measured Depth (usft)	Inclination (°)	Azimuth (°)	Vertical Depth (usft)	+N/-S (usft)	+E/-W (usft)	Vertical Section (usft)	Dogleg Rate (°/100usft)	Build Rate (°/100usft)	Turn Rate (°/100usft)
0.00	0.00	0.00	0.00	0.00	0.00	0.00	0.00	0.00	0.00
100.00	0.00	0.00	100.00	0.00	0.00	0.00	0.00	0.00	0.00
200.00	0.00	0.00	200.00	0.00	0.00	0.00	0.00	0.00	0.00
300.00	0.00	0.00	300.00	0.00	0.00	0.00	0.00	0.00	0.00
400.00	0.00	0.00	400.00	0.00	0.00	0.00	0.00	0.00	0.00
500.00	0.00	0.00	500.00	0.00	0.00	0.00	0.00	0.00	0.00
600.00	0.00	0.00	600.00	0.00	0.00	0.00	0.00	0.00	0.00
700.00	0.00	0.00	700.00	0.00	0.00	0.00	0.00	0.00	0.00
800.00	0.00	0.00	800.00	0.00	0.00	0.00	0.00	0.00	0.00
<b>Start Build 2.00</b>									
900.00	0.00	0.00	900.00	0.00	0.00	0.00	0.00	0.00	0.00
1,000.00	2.00	228.83	999.98	-1.15	-1.31	-1.35	2.00	2.00	0.00
1,100.00	4.00	228.83	1,099.84	-4.59	-5.25	-5.38	2.00	2.00	0.00
<b>Start 3836.58 hold at 1182.24 MD</b>									
1,182.24	5.64	228.83	1,181.78	-9.15	-10.46	-10.71	2.00	2.00	0.00
1,200.00	5.64	228.83	1,199.46	-10.30	-11.77	-12.06	0.00	0.00	0.00
1,300.00	5.64	228.83	1,298.97	-16.77	-19.18	-19.65	0.00	0.00	0.00
1,400.00	5.64	228.83	1,398.49	-23.25	-26.58	-27.23	0.00	0.00	0.00
1,500.00	5.64	228.83	1,498.00	-29.72	-33.98	-34.82	0.00	0.00	0.00
1,600.00	5.64	228.83	1,597.52	-36.20	-41.39	-42.40	0.00	0.00	0.00
1,700.00	5.64	228.83	1,697.03	-42.67	-48.79	-49.99	0.00	0.00	0.00
1,800.00	5.64	228.83	1,796.55	-49.15	-56.20	-57.57	0.00	0.00	0.00
1,900.00	5.64	228.83	1,896.06	-55.62	-63.60	-65.16	0.00	0.00	0.00
2,000.00	5.64	228.83	1,995.58	-62.10	-71.00	-72.74	0.00	0.00	0.00
2,100.00	5.64	228.83	2,095.09	-68.57	-78.41	-80.33	0.00	0.00	0.00
2,200.00	5.64	228.83	2,194.61	-75.05	-85.81	-87.91	0.00	0.00	0.00
2,300.00	5.64	228.83	2,294.12	-81.52	-93.21	-95.50	0.00	0.00	0.00
2,400.00	5.64	228.83	2,393.64	-88.00	-100.62	-103.08	0.00	0.00	0.00
2,500.00	5.64	228.83	2,493.15	-94.47	-108.02	-110.67	0.00	0.00	0.00
2,600.00	5.64	228.83	2,592.67	-100.95	-115.43	-118.25	0.00	0.00	0.00
2,700.00	5.64	228.83	2,692.18	-107.42	-122.83	-125.84	0.00	0.00	0.00
2,800.00	5.64	228.83	2,791.70	-113.90	-130.23	-133.42	0.00	0.00	0.00
2,900.00	5.64	228.83	2,891.21	-120.38	-137.64	-141.01	0.00	0.00	0.00
3,000.00	5.64	228.83	2,990.73	-126.85	-145.04	-148.59	0.00	0.00	0.00
3,100.00	5.64	228.83	3,090.24	-133.33	-152.45	-156.18	0.00	0.00	0.00
3,200.00	5.64	228.83	3,189.76	-139.80	-159.85	-163.76	0.00	0.00	0.00
3,300.00	5.64	228.83	3,289.27	-146.28	-167.25	-171.35	0.00	0.00	0.00
3,400.00	5.64	228.83	3,388.79	-152.75	-174.66	-178.93	0.00	0.00	0.00
3,500.00	5.64	228.83	3,488.30	-159.23	-182.06	-186.52	0.00	0.00	0.00
3,600.00	5.64	228.83	3,587.82	-165.70	-189.47	-194.10	0.00	0.00	0.00
3,700.00	5.64	228.83	3,687.33	-172.18	-196.87	-201.69	0.00	0.00	0.00
3,800.00	5.64	228.83	3,786.85	-178.65	-204.27	-209.27	0.00	0.00	0.00
3,900.00	5.64	228.83	3,886.36	-185.13	-211.68	-216.86	0.00	0.00	0.00
4,000.00	5.64	228.83	3,985.88	-191.60	-219.08	-224.44	0.00	0.00	0.00
<b>Sussex</b>									
4,035.27	5.64	228.83	4,020.98	-193.89	-221.69	-227.12	0.00	0.00	0.00
4,100.00	5.64	228.83	4,085.40	-198.08	-226.48	-232.03	0.00	0.00	0.00
4,200.00	5.64	228.83	4,184.91	-204.55	-233.89	-239.61	0.00	0.00	0.00
4,300.00	5.64	228.83	4,284.43	-211.03	-241.29	-247.20	0.00	0.00	0.00
4,400.00	5.64	228.83	4,383.94	-217.50	-248.70	-254.78	0.00	0.00	0.00
4,500.00	5.64	228.83	4,483.46	-223.98	-256.10	-262.37	0.00	0.00	0.00
4,600.00	5.64	228.83	4,582.97	-230.46	-263.50	-269.95	0.00	0.00	0.00
4,700.00	5.64	228.83	4,682.49	-236.93	-270.91	-277.54	0.00	0.00	0.00

<b>Database:</b>	EDMDBBW	<b>Local Co-ordinate Reference:</b>	Well Anschutz State 5-62-26-1724CH2
<b>Company:</b>	Bill Barrett Corp.	<b>TVD Reference:</b>	WELL @ 4656.00usft (Original Well Elev)
<b>Project:</b>	Weld Co., CO	<b>MD Reference:</b>	WELL @ 4656.00usft (Original Well Elev)
<b>Site:</b>	Sec.26-T5N-R62W	<b>North Reference:</b>	True
<b>Well:</b>	Anschutz State 5-62-26-1724CH2	<b>Survey Calculation Method:</b>	Minimum Curvature
<b>Wellbore:</b>	Wellbore #1		
<b>Design:</b>	Design #1		

Planned Survey									
Measured Depth (usft)	Inclination (°)	Azimuth (°)	Vertical Depth (usft)	+N/-S (usft)	+E/-W (usft)	Vertical Section (usft)	Dogleg Rate (°/100usft)	Build Rate (°/100usft)	Turn Rate (°/100usft)
4,800.00	5.64	228.83	4,782.00	-243.41	-278.31	-285.12	0.00	0.00	0.00
<b>Shannon</b>									
4,847.75	5.64	228.83	4,829.52	-246.50	-281.85	-288.75	0.00	0.00	0.00
4,900.00	5.64	228.83	4,881.52	-249.88	-285.72	-292.71	0.00	0.00	0.00
5,000.00	5.64	228.83	4,981.03	-256.36	-293.12	-300.29	0.00	0.00	0.00
<b>Start Drop -2.00</b>									
5,018.82	5.64	228.83	4,999.76	-257.57	-294.51	-301.72	0.00	0.00	0.00
5,100.00	4.02	228.83	5,080.65	-262.08	-299.66	-306.99	2.00	-2.00	0.00
5,200.00	2.02	228.83	5,180.50	-265.55	-303.63	-311.06	2.00	-2.00	0.00
<b>Start 500.01 hold at 5301.06 MD</b>									
5,301.06	0.00	0.00	5,281.54	-266.72	-304.97	-312.43	2.00	-2.00	0.00
5,400.00	0.00	0.00	5,380.48	-266.72	-304.97	-312.43	0.00	0.00	0.00
5,500.00	0.00	0.00	5,480.48	-266.72	-304.97	-312.43	0.00	0.00	0.00
5,600.00	0.00	0.00	5,580.48	-266.72	-304.97	-312.43	0.00	0.00	0.00
5,700.00	0.00	0.00	5,680.48	-266.72	-304.97	-312.43	0.00	0.00	0.00
<b>Start Build 12.00</b>									
5,801.07	0.00	0.00	5,781.55	-266.72	-304.97	-312.43	0.00	0.00	0.00
5,825.00	2.87	88.37	5,805.47	-266.70	-304.37	-311.83	12.00	12.00	0.00
5,850.00	5.87	88.37	5,830.40	-266.65	-302.47	-309.93	12.00	12.00	0.00
5,875.00	8.87	88.37	5,855.19	-266.56	-299.26	-306.72	12.00	12.00	0.00
5,900.00	11.87	88.37	5,879.78	-266.43	-294.76	-302.22	12.00	12.00	0.00
5,925.00	14.87	88.37	5,904.10	-266.27	-288.98	-296.44	12.00	12.00	0.00
5,950.00	17.87	88.37	5,928.08	-266.07	-281.94	-289.39	12.00	12.00	0.00
5,975.00	20.87	88.37	5,951.66	-265.83	-273.65	-281.10	12.00	12.00	0.00
<b>Sharon Springs</b>									
5,983.34	21.87	88.37	5,959.43	-265.75	-270.61	-278.06	12.00	12.00	0.00
6,000.00	23.87	88.37	5,974.78	-265.56	-264.14	-271.59	12.00	12.00	0.00
6,025.00	26.87	88.37	5,997.36	-265.26	-253.43	-260.88	12.00	12.00	0.00
6,050.00	29.87	88.37	6,019.36	-264.92	-241.56	-249.00	12.00	12.00	0.00
6,075.00	32.87	88.37	6,040.70	-264.55	-228.55	-235.98	12.00	12.00	0.00
6,100.00	35.87	88.37	6,061.33	-264.15	-214.44	-221.87	12.00	12.00	0.00
<b>Niobrara</b>									
6,106.91	36.70	88.37	6,066.90	-264.04	-210.36	-217.78	12.00	12.00	0.00
6,125.00	38.87	88.37	6,081.20	-263.72	-199.28	-206.70	12.00	12.00	0.00
6,150.00	41.87	88.37	6,100.24	-263.26	-183.09	-190.51	12.00	12.00	0.00
<b>A Chalk</b>									
6,162.70	43.40	88.37	6,109.59	-263.02	-174.49	-181.90	12.00	12.00	0.00
6,175.00	44.87	88.37	6,118.41	-262.77	-165.93	-173.34	12.00	12.00	0.00
6,200.00	47.87	88.37	6,135.66	-262.26	-147.85	-155.25	12.00	12.00	0.00
6,225.00	50.87	88.37	6,151.94	-261.72	-128.88	-136.28	12.00	12.00	0.00
<b>B Chalk</b>									
6,249.69	53.84	88.37	6,167.02	-261.17	-109.34	-116.72	12.00	12.00	0.00
6,250.00	53.87	88.37	6,167.20	-261.16	-109.09	-116.48	12.00	12.00	0.00
6,275.00	56.87	88.37	6,181.40	-260.58	-88.53	-95.91	12.00	12.00	0.00
6,300.00	59.87	88.37	6,194.51	-259.97	-67.26	-74.62	12.00	12.00	0.00
6,325.00	62.87	88.37	6,206.49	-259.35	-45.32	-52.68	12.00	12.00	0.00
6,350.00	65.87	88.37	6,217.30	-258.71	-22.80	-30.15	12.00	12.00	0.00
6,375.00	68.87	88.37	6,226.92	-258.06	0.27	-7.07	12.00	12.00	0.00
6,400.00	71.87	88.37	6,235.32	-257.39	23.80	16.47	12.00	12.00	0.00
6,425.00	74.87	88.37	6,242.47	-256.71	47.75	40.42	12.00	12.00	0.00
<b>Top C Target</b>									
6,425.67	74.95	88.37	6,242.64	-256.69	48.39	41.07	12.00	12.00	0.00
6,450.00	77.87	88.37	6,248.36	-256.02	72.03	64.72	12.00	12.00	0.00

<b>Database:</b>	EDMDBBW	<b>Local Co-ordinate Reference:</b>	Well Anschutz State 5-62-26-1724CH2
<b>Company:</b>	Bill Barrett Corp.	<b>TVD Reference:</b>	WELL @ 4656.00usft (Original Well Elev)
<b>Project:</b>	Weld Co., CO	<b>MD Reference:</b>	WELL @ 4656.00usft (Original Well Elev)
<b>Site:</b>	Sec.26-T5N-R62W	<b>North Reference:</b>	True
<b>Well:</b>	Anschutz State 5-62-26-1724CH2	<b>Survey Calculation Method:</b>	Minimum Curvature
<b>Wellbore:</b>	Wellbore #1		
<b>Design:</b>	Design #1		

Planned Survey									
Measured Depth (usft)	Inclination (°)	Azimuth (°)	Vertical Depth (usft)	+N/-S (usft)	+E/-W (usft)	Vertical Section (usft)	Dogleg Rate (°/100usft)	Build Rate (°/100usft)	Turn Rate (°/100usft)
6,475.00	80.87	88.37	6,252.97	-255.33	96.59	89.29	12.00	12.00	0.00
6,500.00	83.87	88.37	6,256.29	-254.62	121.35	114.06	12.00	12.00	0.00
6,525.00	86.87	88.37	6,258.30	-253.92	146.26	138.98	12.00	12.00	0.00
6,550.00	89.87	88.37	6,259.01	-253.21	171.24	163.96	12.00	12.00	0.00
Start 9737.39 hold at 6555.23 MD - 7" Csg.									
6,555.23	90.50	88.37	6,259.00	-253.06	176.46	169.19	12.00	12.00	0.00
6,600.00	90.50	88.37	6,258.61	-251.79	221.21	213.96	0.00	0.00	0.00
6,700.00	90.50	88.37	6,257.73	-248.95	321.17	313.96	0.00	0.00	0.00
6,800.00	90.50	88.37	6,256.86	-246.12	421.13	413.96	0.00	0.00	0.00
6,900.00	90.50	88.37	6,255.99	-243.28	521.08	513.95	0.00	0.00	0.00
7,000.00	90.50	88.37	6,255.11	-240.44	621.04	613.95	0.00	0.00	0.00
7,100.00	90.50	88.37	6,254.24	-237.61	720.99	713.94	0.00	0.00	0.00
7,200.00	90.50	88.37	6,253.37	-234.77	820.95	813.94	0.00	0.00	0.00
7,300.00	90.50	88.37	6,252.50	-231.93	920.91	913.94	0.00	0.00	0.00
7,400.00	90.50	88.37	6,251.62	-229.10	1,020.86	1,013.93	0.00	0.00	0.00
7,500.00	90.50	88.37	6,250.75	-226.26	1,120.82	1,113.93	0.00	0.00	0.00
7,600.00	90.50	88.37	6,249.88	-223.43	1,220.77	1,213.92	0.00	0.00	0.00
7,700.00	90.50	88.37	6,249.00	-220.59	1,320.73	1,313.92	0.00	0.00	0.00
7,800.00	90.50	88.37	6,248.13	-217.75	1,420.69	1,413.92	0.00	0.00	0.00
7,900.00	90.50	88.37	6,247.26	-214.92	1,520.64	1,513.91	0.00	0.00	0.00
8,000.00	90.50	88.37	6,246.39	-212.08	1,620.60	1,613.91	0.00	0.00	0.00
8,100.00	90.50	88.37	6,245.51	-209.24	1,720.55	1,713.91	0.00	0.00	0.00
8,200.00	90.50	88.37	6,244.64	-206.41	1,820.51	1,813.90	0.00	0.00	0.00
8,300.00	90.50	88.37	6,243.77	-203.57	1,920.47	1,913.90	0.00	0.00	0.00
8,400.00	90.50	88.37	6,242.89	-200.74	2,020.42	2,013.89	0.00	0.00	0.00
8,500.00	90.50	88.37	6,242.02	-197.90	2,120.38	2,113.89	0.00	0.00	0.00
8,600.00	90.50	88.37	6,241.15	-195.06	2,220.33	2,213.89	0.00	0.00	0.00
8,700.00	90.50	88.37	6,240.28	-192.23	2,320.29	2,313.88	0.00	0.00	0.00
8,800.00	90.50	88.37	6,239.40	-189.39	2,420.25	2,413.88	0.00	0.00	0.00
8,900.00	90.50	88.37	6,238.53	-186.55	2,520.20	2,513.88	0.00	0.00	0.00
9,000.00	90.50	88.37	6,237.66	-183.72	2,620.16	2,613.87	0.00	0.00	0.00
9,100.00	90.50	88.37	6,236.78	-180.88	2,720.11	2,713.87	0.00	0.00	0.00
9,200.00	90.50	88.37	6,235.91	-178.04	2,820.07	2,813.86	0.00	0.00	0.00
9,300.00	90.50	88.37	6,235.04	-175.21	2,920.03	2,913.86	0.00	0.00	0.00
9,400.00	90.50	88.37	6,234.17	-172.37	3,019.98	3,013.86	0.00	0.00	0.00
9,500.00	90.50	88.37	6,233.29	-169.54	3,119.94	3,113.85	0.00	0.00	0.00
9,600.00	90.50	88.37	6,232.42	-166.70	3,219.89	3,213.85	0.00	0.00	0.00
9,700.00	90.50	88.37	6,231.55	-163.86	3,319.85	3,313.84	0.00	0.00	0.00
9,800.00	90.50	88.37	6,230.67	-161.03	3,419.81	3,413.84	0.00	0.00	0.00
9,900.00	90.50	88.37	6,229.80	-158.19	3,519.76	3,513.84	0.00	0.00	0.00
10,000.00	90.50	88.37	6,228.93	-155.35	3,619.72	3,613.83	0.00	0.00	0.00
10,100.00	90.50	88.37	6,228.06	-152.52	3,719.67	3,713.83	0.00	0.00	0.00
10,200.00	90.50	88.37	6,227.18	-149.68	3,819.63	3,813.83	0.00	0.00	0.00
10,300.00	90.50	88.37	6,226.31	-146.85	3,919.58	3,913.82	0.00	0.00	0.00
10,400.00	90.50	88.37	6,225.44	-144.01	4,019.54	4,013.82	0.00	0.00	0.00
10,500.00	90.50	88.37	6,224.56	-141.17	4,119.50	4,113.81	0.00	0.00	0.00
10,600.00	90.50	88.37	6,223.69	-138.34	4,219.45	4,213.81	0.00	0.00	0.00
10,700.00	90.50	88.37	6,222.82	-135.50	4,319.41	4,313.81	0.00	0.00	0.00
10,800.00	90.50	88.37	6,221.95	-132.66	4,419.36	4,413.80	0.00	0.00	0.00
10,900.00	90.50	88.37	6,221.07	-129.83	4,519.32	4,513.80	0.00	0.00	0.00
11,000.00	90.50	88.37	6,220.20	-126.99	4,619.28	4,613.80	0.00	0.00	0.00
11,100.00	90.50	88.37	6,219.33	-124.15	4,719.23	4,713.79	0.00	0.00	0.00
11,200.00	90.50	88.37	6,218.45	-121.32	4,819.19	4,813.79	0.00	0.00	0.00

<b>Database:</b>	EDMDBBW	<b>Local Co-ordinate Reference:</b>	Well Anschutz State 5-62-26-1724CH2
<b>Company:</b>	Bill Barrett Corp.	<b>TVD Reference:</b>	WELL @ 4656.00usft (Original Well Elev)
<b>Project:</b>	Weld Co., CO	<b>MD Reference:</b>	WELL @ 4656.00usft (Original Well Elev)
<b>Site:</b>	Sec.26-T5N-R62W	<b>North Reference:</b>	True
<b>Well:</b>	Anschutz State 5-62-26-1724CH2	<b>Survey Calculation Method:</b>	Minimum Curvature
<b>Wellbore:</b>	Wellbore #1		
<b>Design:</b>	Design #1		

Planned Survey									
Measured Depth (usft)	Inclination (°)	Azimuth (°)	Vertical Depth (usft)	+N/-S (usft)	+E/-W (usft)	Vertical Section (usft)	Dogleg Rate (°/100usft)	Build Rate (°/100usft)	Turn Rate (°/100usft)
11,300.00	90.50	88.37	6,217.58	-118.48	4,919.14	4,913.78	0.00	0.00	0.00
11,400.00	90.50	88.37	6,216.71	-115.65	5,019.10	5,013.78	0.00	0.00	0.00
11,500.00	90.50	88.37	6,215.84	-112.81	5,119.06	5,113.78	0.00	0.00	0.00
11,600.00	90.50	88.37	6,214.96	-109.97	5,219.01	5,213.77	0.00	0.00	0.00
11,700.00	90.50	88.37	6,214.09	-107.14	5,318.97	5,313.77	0.00	0.00	0.00
11,800.00	90.50	88.37	6,213.22	-104.30	5,418.92	5,413.76	0.00	0.00	0.00
11,900.00	90.50	88.37	6,212.34	-101.46	5,518.88	5,513.76	0.00	0.00	0.00
12,000.00	90.50	88.37	6,211.47	-98.63	5,618.84	5,613.76	0.00	0.00	0.00
12,100.00	90.50	88.37	6,210.60	-95.79	5,718.79	5,713.75	0.00	0.00	0.00
12,200.00	90.50	88.37	6,209.73	-92.96	5,818.75	5,813.75	0.00	0.00	0.00
12,300.00	90.50	88.37	6,208.85	-90.12	5,918.70	5,913.75	0.00	0.00	0.00
12,400.00	90.50	88.37	6,207.98	-87.28	6,018.66	6,013.74	0.00	0.00	0.00
12,500.00	90.50	88.37	6,207.11	-84.45	6,118.62	6,113.74	0.00	0.00	0.00
12,600.00	90.50	88.37	6,206.23	-81.61	6,218.57	6,213.73	0.00	0.00	0.00
12,700.00	90.50	88.37	6,205.36	-78.77	6,318.53	6,313.73	0.00	0.00	0.00
12,800.00	90.50	88.37	6,204.49	-75.94	6,418.48	6,413.73	0.00	0.00	0.00
12,900.00	90.50	88.37	6,203.62	-73.10	6,518.44	6,513.72	0.00	0.00	0.00
13,000.00	90.50	88.37	6,202.74	-70.26	6,618.40	6,613.72	0.00	0.00	0.00
13,100.00	90.50	88.37	6,201.87	-67.43	6,718.35	6,713.72	0.00	0.00	0.00
13,200.00	90.50	88.37	6,201.00	-64.59	6,818.31	6,813.71	0.00	0.00	0.00
13,300.00	90.50	88.37	6,200.12	-61.76	6,918.26	6,913.71	0.00	0.00	0.00
13,400.00	90.50	88.37	6,199.25	-58.92	7,018.22	7,013.70	0.00	0.00	0.00
13,500.00	90.50	88.37	6,198.38	-56.08	7,118.18	7,113.70	0.00	0.00	0.00
13,600.00	90.50	88.37	6,197.51	-53.25	7,218.13	7,213.70	0.00	0.00	0.00
13,700.00	90.50	88.37	6,196.63	-50.41	7,318.09	7,313.69	0.00	0.00	0.00
13,800.00	90.50	88.37	6,195.76	-47.57	7,418.04	7,413.69	0.00	0.00	0.00
13,900.00	90.50	88.37	6,194.89	-44.74	7,518.00	7,513.68	0.00	0.00	0.00
14,000.00	90.50	88.37	6,194.01	-41.90	7,617.96	7,613.68	0.00	0.00	0.00
14,100.00	90.50	88.37	6,193.14	-39.07	7,717.91	7,713.68	0.00	0.00	0.00
14,200.00	90.50	88.37	6,192.27	-36.23	7,817.87	7,813.67	0.00	0.00	0.00
14,300.00	90.50	88.37	6,191.40	-33.39	7,917.82	7,913.67	0.00	0.00	0.00
14,400.00	90.50	88.37	6,190.52	-30.56	8,017.78	8,013.67	0.00	0.00	0.00
14,500.00	90.50	88.37	6,189.65	-27.72	8,117.74	8,113.66	0.00	0.00	0.00
14,600.00	90.50	88.37	6,188.78	-24.88	8,217.69	8,213.66	0.00	0.00	0.00
14,700.00	90.50	88.37	6,187.90	-22.05	8,317.65	8,313.65	0.00	0.00	0.00
14,800.00	90.50	88.37	6,187.03	-19.21	8,417.60	8,413.65	0.00	0.00	0.00
14,900.00	90.50	88.37	6,186.16	-16.37	8,517.56	8,513.65	0.00	0.00	0.00
15,000.00	90.50	88.37	6,185.29	-13.54	8,617.51	8,613.64	0.00	0.00	0.00
15,100.00	90.50	88.37	6,184.41	-10.70	8,717.47	8,713.64	0.00	0.00	0.00
15,200.00	90.50	88.37	6,183.54	-7.87	8,817.43	8,813.64	0.00	0.00	0.00
15,300.00	90.50	88.37	6,182.67	-5.03	8,917.38	8,913.63	0.00	0.00	0.00
15,400.00	90.50	88.37	6,181.79	-2.19	9,017.34	9,013.63	0.00	0.00	0.00
15,500.00	90.50	88.37	6,180.92	0.64	9,117.29	9,113.62	0.00	0.00	0.00
15,600.00	90.50	88.37	6,180.05	3.48	9,217.25	9,213.62	0.00	0.00	0.00
15,700.00	90.50	88.37	6,179.18	6.32	9,317.21	9,313.62	0.00	0.00	0.00
15,800.00	90.50	88.37	6,178.30	9.15	9,417.16	9,413.61	0.00	0.00	0.00
15,900.00	90.50	88.37	6,177.43	11.99	9,517.12	9,513.61	0.00	0.00	0.00
16,000.00	90.50	88.37	6,176.56	14.82	9,617.07	9,613.60	0.00	0.00	0.00
16,100.00	90.50	88.37	6,175.68	17.66	9,717.03	9,713.60	0.00	0.00	0.00
16,200.00	90.50	88.37	6,174.81	20.50	9,816.99	9,813.60	0.00	0.00	0.00
<b>TD at 16292.63</b>									
16,292.63	90.50	88.37	6,174.00	23.12	9,909.57	9,906.22	0.00	0.00	0.00



<b>Database:</b>	EDMDBBW	<b>Local Co-ordinate Reference:</b>	Well Anschutz State 5-62-26-1724CH2
<b>Company:</b>	Bill Barrett Corp.	<b>TVD Reference:</b>	WELL @ 4656.00usft (Original Well Elev)
<b>Project:</b>	Weld Co., CO	<b>MD Reference:</b>	WELL @ 4656.00usft (Original Well Elev)
<b>Site:</b>	Sec.26-T5N-R62W	<b>North Reference:</b>	True
<b>Well:</b>	Anschutz State 5-62-26-1724CH2	<b>Survey Calculation Method:</b>	Minimum Curvature
<b>Wellbore:</b>	Wellbore #1		
<b>Design:</b>	Design #1		

Design Targets									
Target Name	Dip Angle	Dip Dir.	TVD	+N/-S	+E/-W	Northing	Easting	Latitude	Longitude
- hit/miss target	(°)	(°)	(usft)	(usft)	(usft)	(usft)	(usft)		
- Shape									
Anschutz State 5-62-26- - plan hits target center - Point	0.00	0.00	6,174.00	23.12	9,909.57	1,381,495.968	3,344,516.725	40° 22' 26.450 N	104° 15' 48.370 W

Casing Points					
Measured Depth	Vertical Depth	Name		Casing Diameter	Hole Diameter
(usft)	(usft)			(")	(")
6,555.23	6,259.00	7" Csg.		7	8-3/4

Formations						
Measured Depth	Vertical Depth	Name		Lithology	Dip	Dip Direction
(usft)	(usft)				(°)	(°)
4,035.27	4,019.00	Sussex			-0.50	88.37
4,847.75	4,827.00	Shannon			-0.50	88.37
5,983.34	5,957.00	Sharon Springs			-0.50	88.37
6,106.91	6,065.00	Niobrara			-0.50	88.37
6,162.70	6,108.00	A Chalk			-0.50	88.37
6,249.69	6,166.00	B Chalk			-0.50	88.37
6,425.67	6,243.00	Top C Target			-0.50	88.37

Plan Annotations					
Measured Depth	Vertical Depth	Local Coordinates		Comment	
(usft)	(usft)	+N/-S (usft)	+E/-W (usft)		
900.00	900.00	0.00	0.00	Start Build 2.00	
1,182.24	1,181.78	-9.15	-10.46	Start 3836.58 hold at 1182.24 MD	
5,018.82	4,999.76	-257.57	-294.51	Start Drop -2.00	
5,301.06	5,281.54	-266.72	-304.97	Start 500.01 hold at 5301.06 MD	
5,801.07	5,781.55	-266.72	-304.97	Start Build 12.00	
6,555.23	6,259.00	-253.06	176.47	Start 9737.39 hold at 6555.23 MD	
16,292.63	6,174.00	23.12	9,909.57	TD at 16292.63	