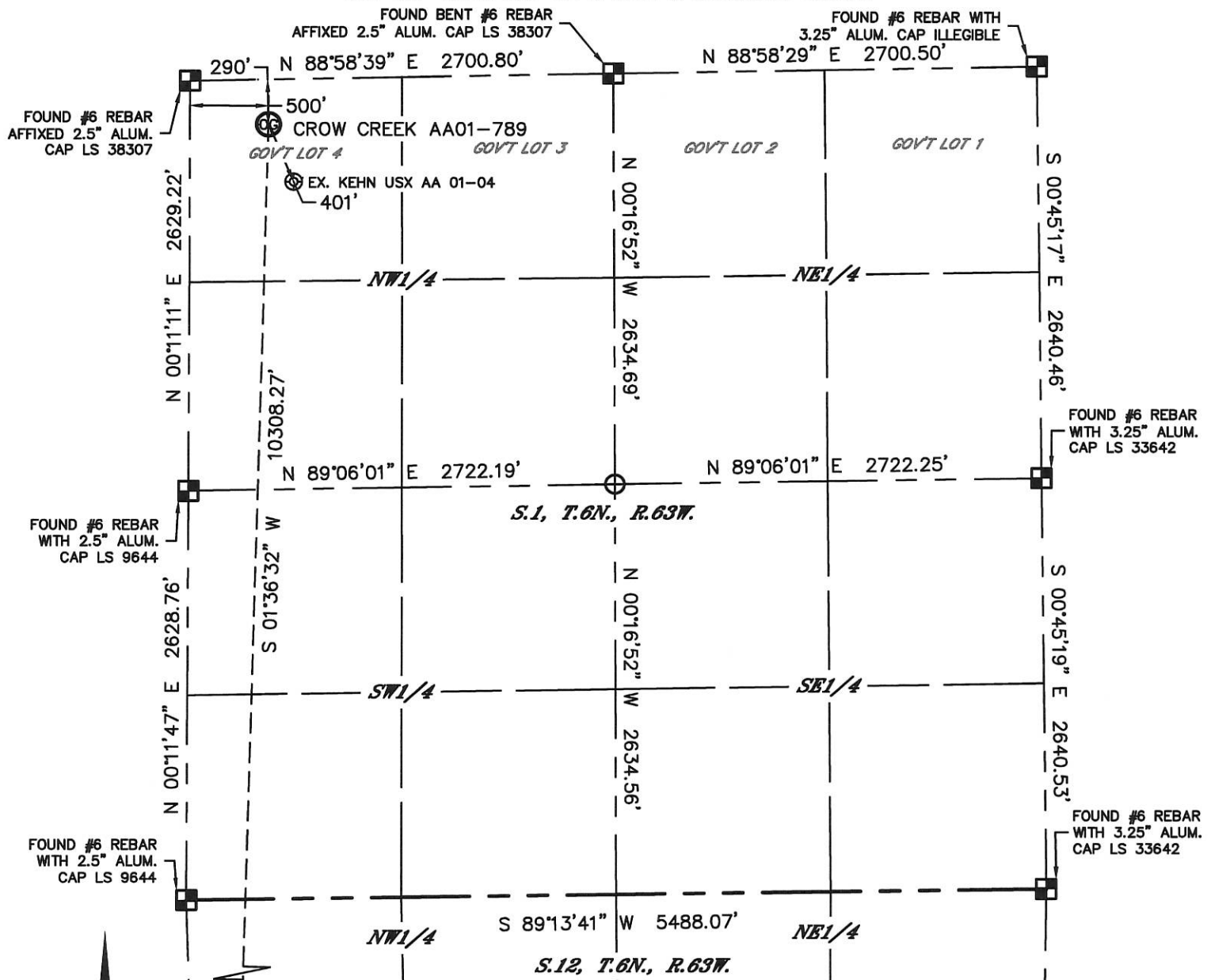


# WELL LOCATION CERTIFICATE

SECTION: 1  
TOWNSHIP: 6N  
RANGE: 63W



THIS MAP DOES NOT REPRESENT A BOUNDARY SURVEY



In accordance with a request from Greg Wilson with Noble Energy Inc. Lat40', Inc. has determined the surface location of the CROW CREEK AA01-789 to be 290' from the NORTH line and 500' from the WEST line as measured at right angles from the section lines of Section 1, Township 6 North, Range 63 West and the bottom hole to be 30' from the NORTH line and 60' from the WEST line as measured at right angles from the section lines of Section 13, Township 6 North, Range 63 West of the Sixth Principal Meridian, County of Weld, State of Colorado.

I hereby state that this Well Location Certificate was prepared by me, or under my direct supervision, that the fieldwork was completed on 2/10/2014, for and on behalf of Noble Energy Inc.. That this is not a Land Survey Plat or an Improvement Survey Plat, and that it is not to be relied upon for establishment of fence, building, or other future improvement lines.

**NOTE:**

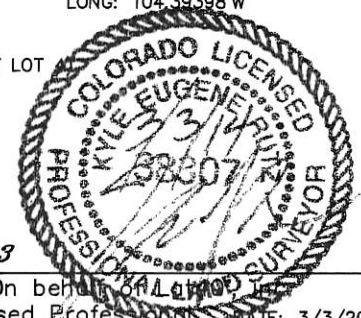
- 1) Bearings shown are Grid Bearings of the Colorado State Plane Coordinate System, North Zone, North American Datum 1983/2007. The lineal dimensions as contained herein are based upon the "U.S. Survey Foot."
- 2) Ground elevations are based on an observed GPS elevation (NAVD 1988 DATUM).
- 3) IMPROVEMENTS: See LOCATION DRAWING for all visible improvements within 500' of disturbed area.
- 4) SURFACE USE: RANGELAND
- 5) INSTRUMENT OPERATOR: BRIAN ROTTINGHAUS
- 6) NEAREST EXISTING WELL: KEHN USX AA 01-04, 401' SE
- NEAREST CULTURAL ITEMS:
- BUILDING:  $\pm 2760'$  W
- BUILDING UNIT:  $\pm 3095'$  W
- HIGH OCCUPANCY BUILDING UNIT: 5280'+
- DESIGNATED OUTSIDE ACTIVITY AREA: 5280'+
- PUBLIC ROAD: COUNTY ROAD 74, 282' N
- ABOVEGROUND UTILITY: 262' N
- RAILROAD: 5280'+
- PROPERTY LINE: 290' N
- LEGEND
-  = ALIQUOT MONUMENT AS DE
-  = CALCULATED POSITION

## SURFACE LOCATION

LAT: 40.52203N  
LONG: 104.39248W  
PDOP: 1.8  
ELEV: 4796'  
1/4,1/4: NW1/4NW1/4 (GOV'T LOT

**BOTTOM HOLE**

LAT: 40.49376°N  
LONG: 104.39398°W



***SHEET 1 OF 3***

Kyle E. Rutz—On behalf of Laramie, Inc.  
Colorado Licensed Professional Land Surveyor No. 38307  
DATE: 3/3/2014  
PROJECT#: 2014014

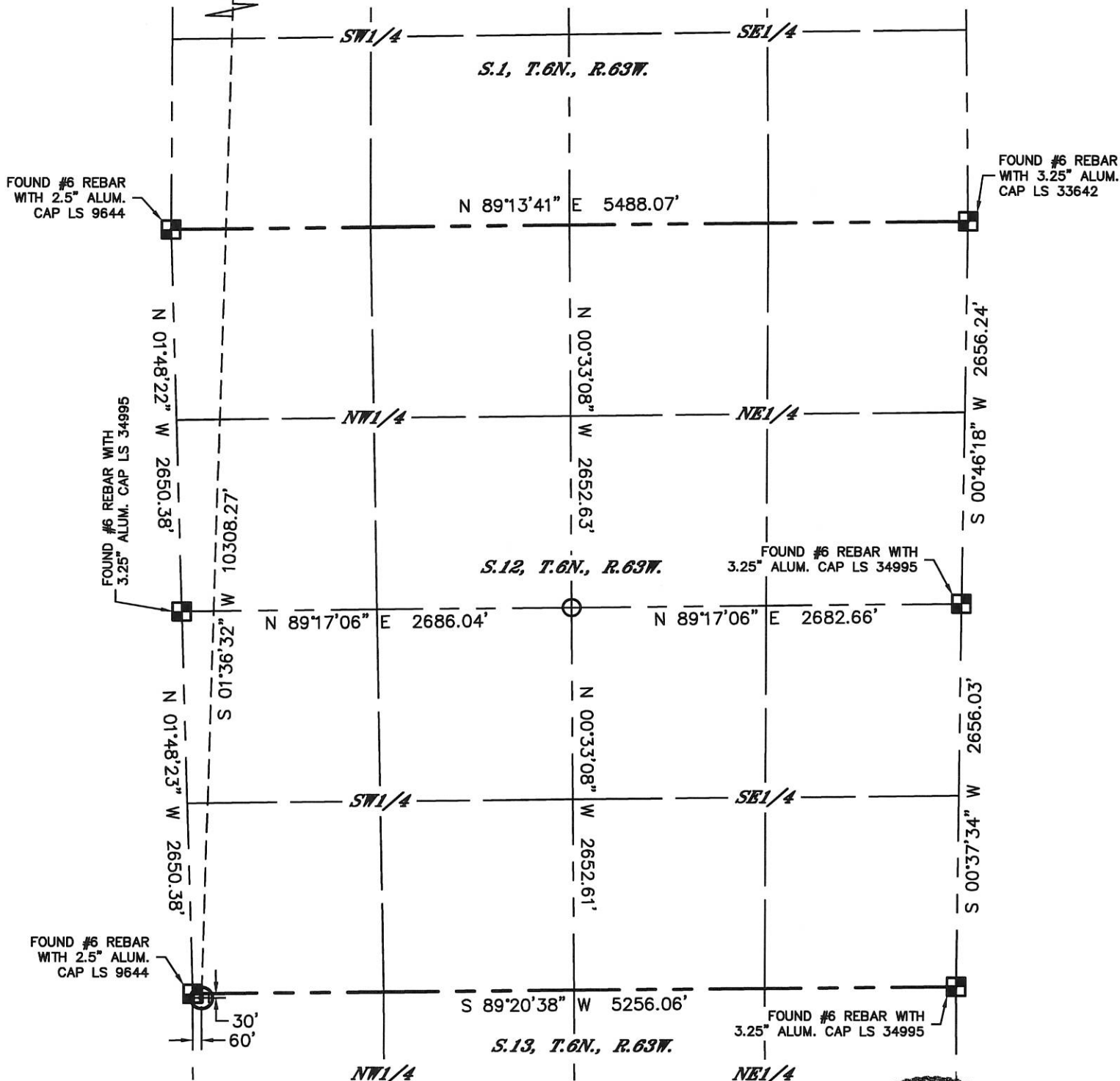


# WELL LOCATION CERTIFICATE

THIS MAP DOES NOT REPRESENT A BOUNDARY SURVEY

SECTION: 1  
TOWNSHIP: 6N  
RANGE: 63W

99 CROW CREEK AA01-789

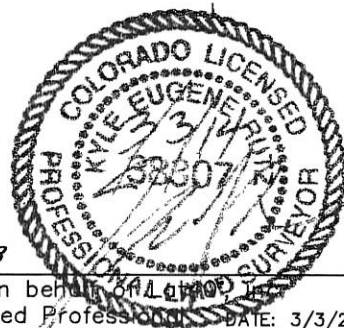


## LEGEND

- = ALIQUOT MONUMENT AS DESCRIBED
- = CALCULATED POSITION

## SHEET 2 OF 3

Kyle E. Rutz—On behalf of LAT40°, Inc.  
Colorado Licensed Professional Land Surveyor No. 38307  
DATE: 3/3/2014  
PROJECT#: 2014014

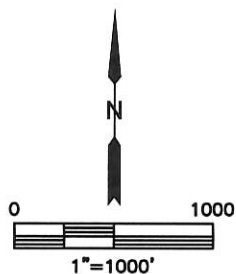
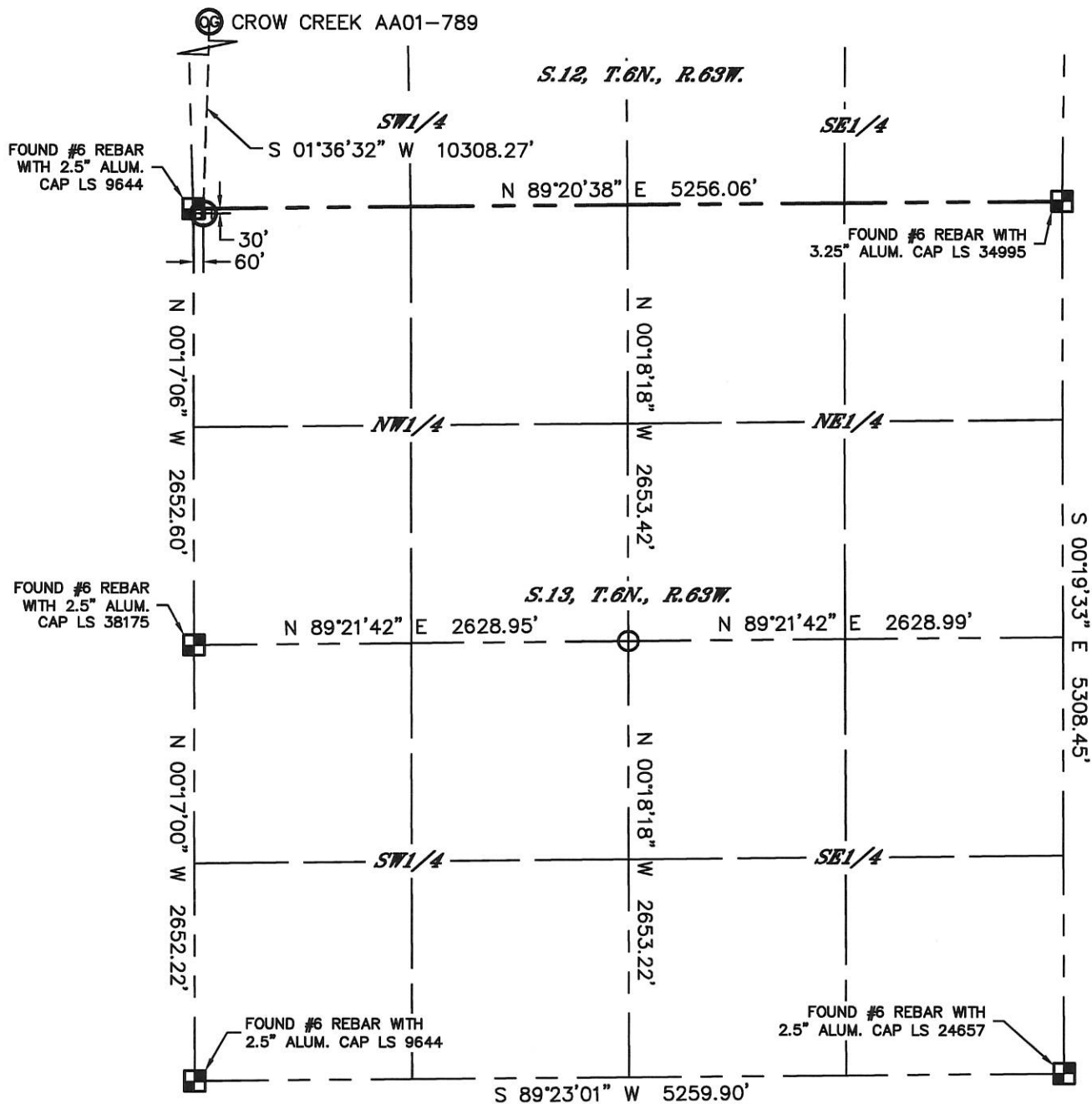




# WELL LOCATION CERTIFICATE

THIS MAP DOES NOT REPRESENT A BOUNDARY SURVEY

SECTION: 1  
TOWNSHIP: 6N  
RANGE: 63W

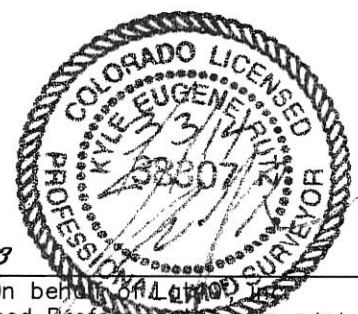


## LEGEND

- = ALIQUOT MONUMENT AS DESCRIBED
- = CALCULATED POSITION

## SHEET 3 OF 3

Kyle E. Rutz—On behalf of Lat40°, Inc.  
Colorado Licensed Professional Land Surveyor No. 38307  
DATE: 3/3/2014  
PROJECT#: 2014014

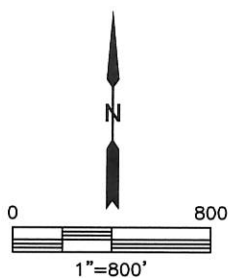
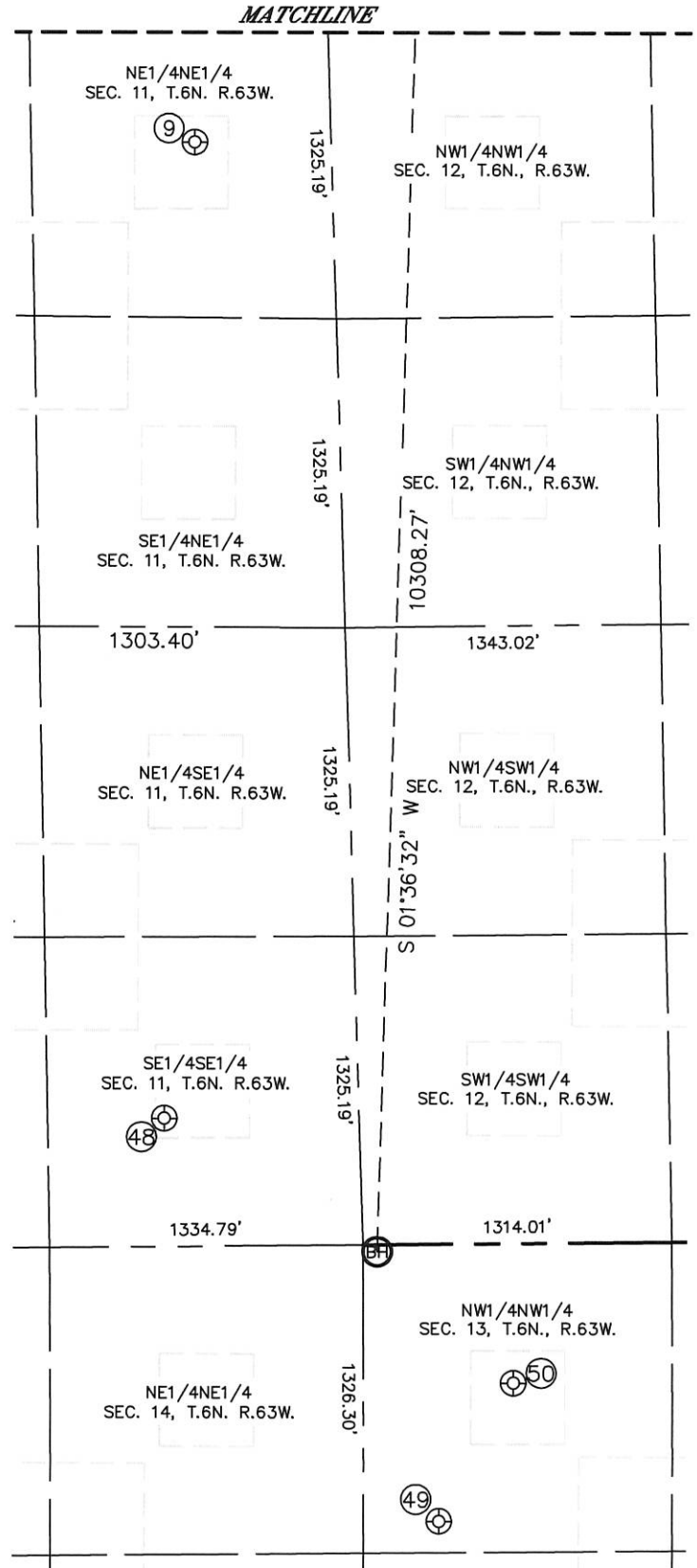
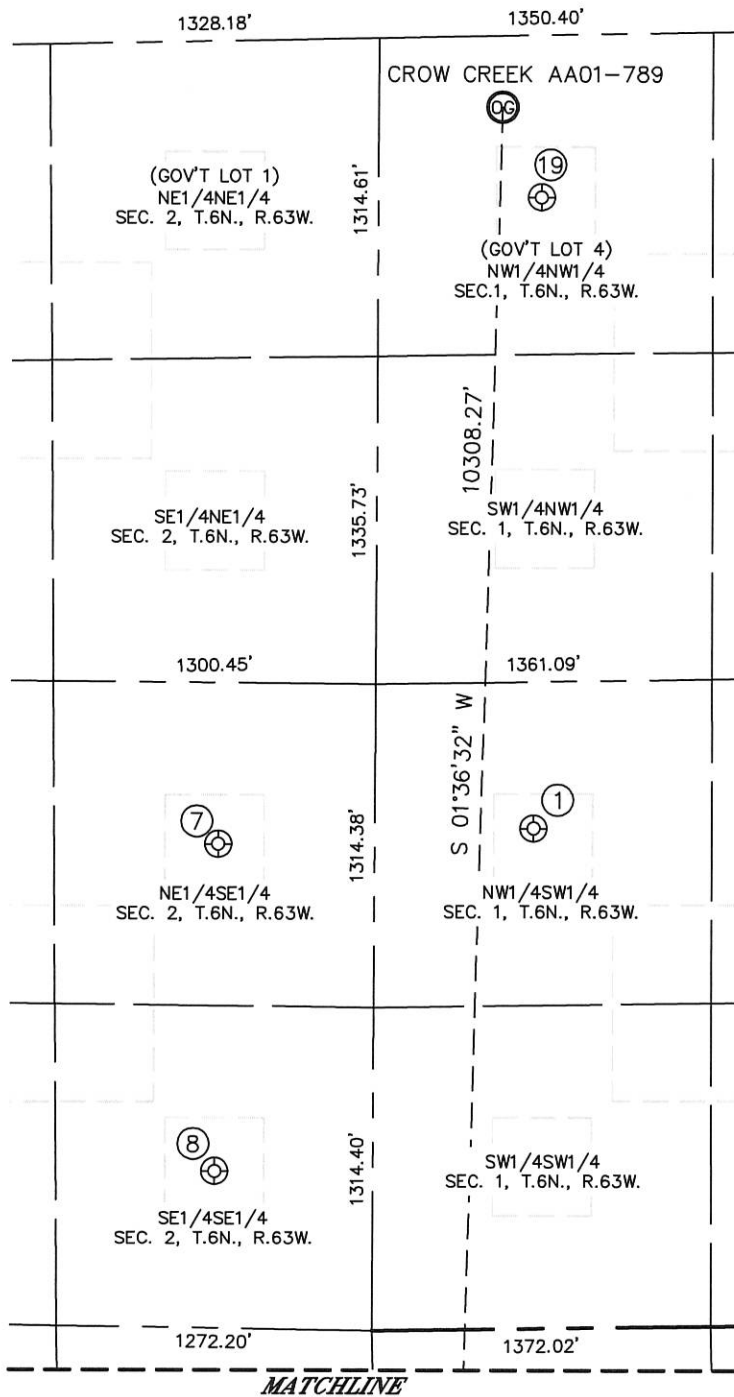




# SITE SKETCH

CROW CREEK AA01-789

SECTION: 1  
TOWNSHIP: 6N  
RANGE: 63W





Lat40°, Inc. 1635 Foxtrail Drive, Suite 325 Loveland, CO 970-776-3321

**SITE SKETCH**  
CROW CREEK AA01-789

SECTION: 1  
TOWNSHIP: 6N  
RANGE: 63W

WELL NO.	WELL NAME	SHL FOOTAGE				SHL LAT°	SHL LONG°	PDOP	ELEV (FT.)	1/4/1/4
1	KEHN USX AA01-12	2033	FSL	641	FWL	40.51397	-104.39214	2.5	4830	NWSW
7	KOHLHOFF 43-2	1969	FSL	632	FEL	40.51384	-104.39672	2.6	4802	NESE
8	KOHLHOFF 44-2	639	FSL	639	FEL	40.51019	-104.39682	2.2	4831	SESE
9	WELLS RANCH USX AA11-01P	577	FNL	580	FEL	40.50685	-104.39661	2.5	4846	NENE
19	KEHN USX AA 01-04	661	FNL	660	FWL	40.52101	-104.39193	1.6	4811	NWNW
48	WELLS RANCH USX AA 11-16P	550	FSL	830	FEL	40.49536	-104.39722	2.0	4829	SESE
49	WELLS RANCH USX AA 13-67HN	1192	FNL	320	FWL	40.49057	-104.39308	1.9	4837	NWNW
50	WELLS RANCH USX AA 13-03	601	FNL	636	FWL	40.49219	-104.39193	1.9	4838	NWNW