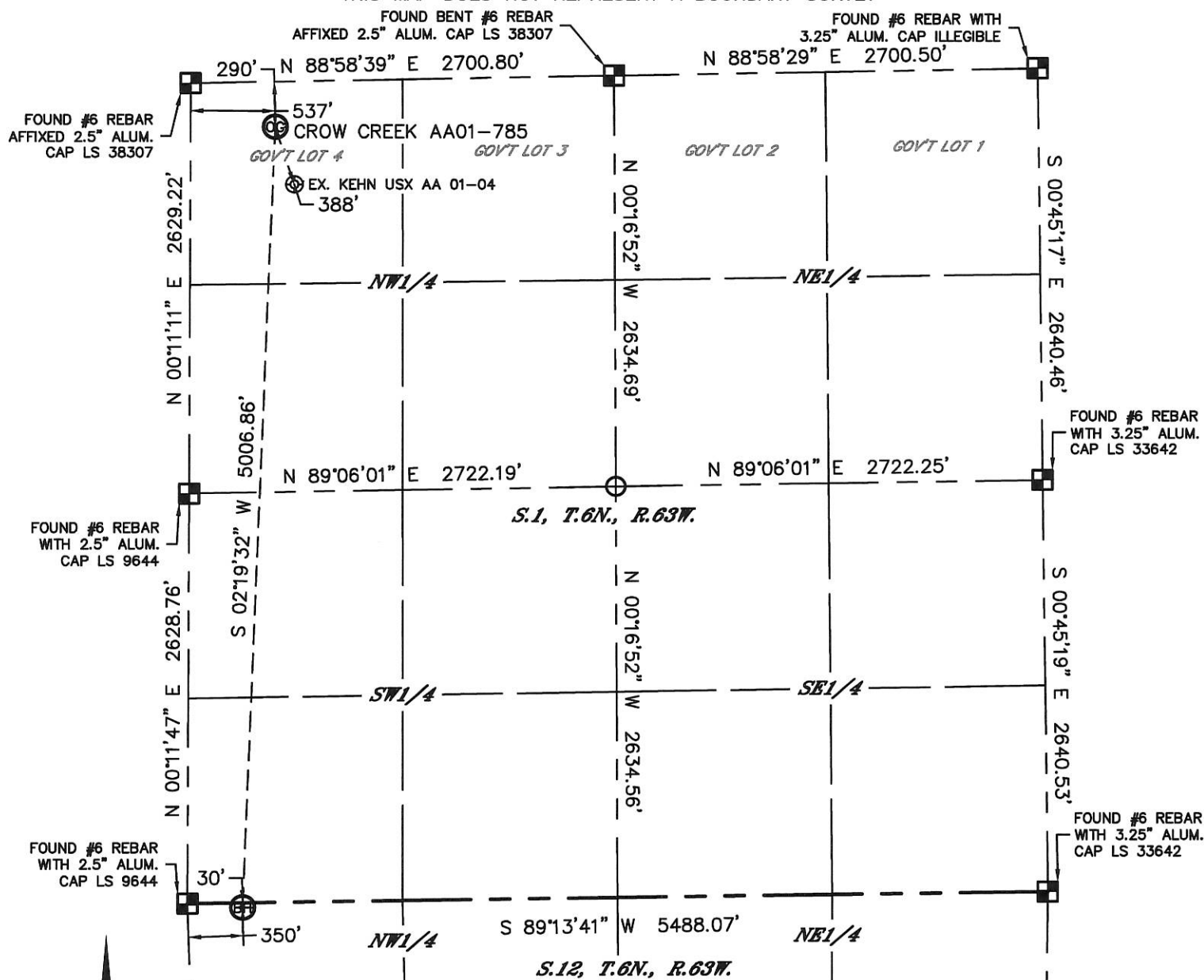




WELL LOCATION CERTIFICATE

SECTION: 1
TOWNSHIP: 6N
RANGE: 63W

THIS MAP DOES NOT REPRESENT A BOUNDARY SURVEY



In accordance with a request from Greg Wilson with Noble Energy Inc., Lat40°, Inc. has determined the surface location of the CROW CREEK AA01-785 to be 290' from the NORTH line and 537' from the WEST line as measured at right angles from the section lines of Section 1, Township 6 North, Range 63 West and the bottom hole to be 30' from the NORTH line and 350' from the WEST line as measured at right angles from the section lines of Section 12, Township 6 North, Range 63 West of the Sixth Principal Meridian, County of Weld, State of Colorado.

I hereby state that this Well Location Certificate was prepared by me, or under my direct supervision, that the fieldwork was completed on 2/10/2014, for and on behalf of Noble Energy Inc.. That this is not a Land Survey Plat or an Improvement Survey Plat, and that it is not to be relied upon for establishment of fence, building, or other future improvement lines.

NOTE:

- 1) Bearings shown are Grid Bearings of the Colorado State Plane Coordinate System, North Zone, North American Datum 1983/2007. The lineal dimensions as contained herein are based upon the "U.S. Survey Foot."
 - 2) Ground elevations are based on an observed GPS elevation (NAVD 1988 DATUM).
 - 3) IMPROVEMENTS: See LOCATION DRAWING for all visible improvements within 500' of disturbed area.
 - 4) SURFACE USE: RANGELAND
 - 5) INSTRUMENT OPERATOR: BRIAN ROTTINGHAUS
 - 6) NEAREST EXISTING WELL: KEHN USX AA 01-04, 388' SE
- NEAREST CULTURAL ITEMS:
BUILDING: ±2798' W
BUILDING UNIT: ±3132' W
HIGH OCCUPANCY BUILDING UNIT: 5280'+
DESIGNATED OUTSIDE ACTIVITY AREA: 5280'+
PUBLIC ROAD: COUNTY ROAD 74, 282' N
ABOVEGROUND UTILITY: 262' N
RAILROAD: 5280'+
PROPERTY LINE: 290' N

SURFACE LOCATION
LAT: 40.52203°N
LONG: 104.39235°W
PDOP: 1.7
ELEV: 4797'
1/4,1/4: NW1/4NW1/4 (GOV'T LOT

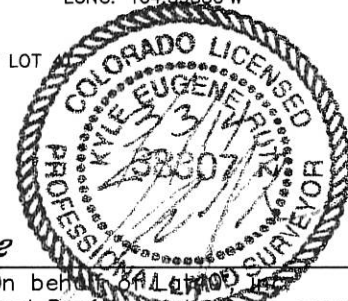
BOTTOM HOLE
LAT: 40.50831°N
LONG: 104.39330°W

LEGEND

- = ALIQUOT MONUMENT AS DESCRIBED
○ = CALCULATED POSITION

SHEET 1 OF 2

Kyle E. Rutz—On behalf of Lat40°, Inc.
Colorado Licensed Professional Land Surveyor No. 38307
DATE: 3/3/2014
PROJECT#: 2014014





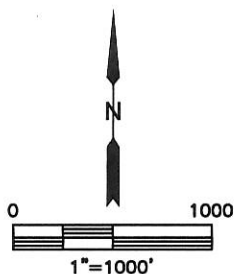
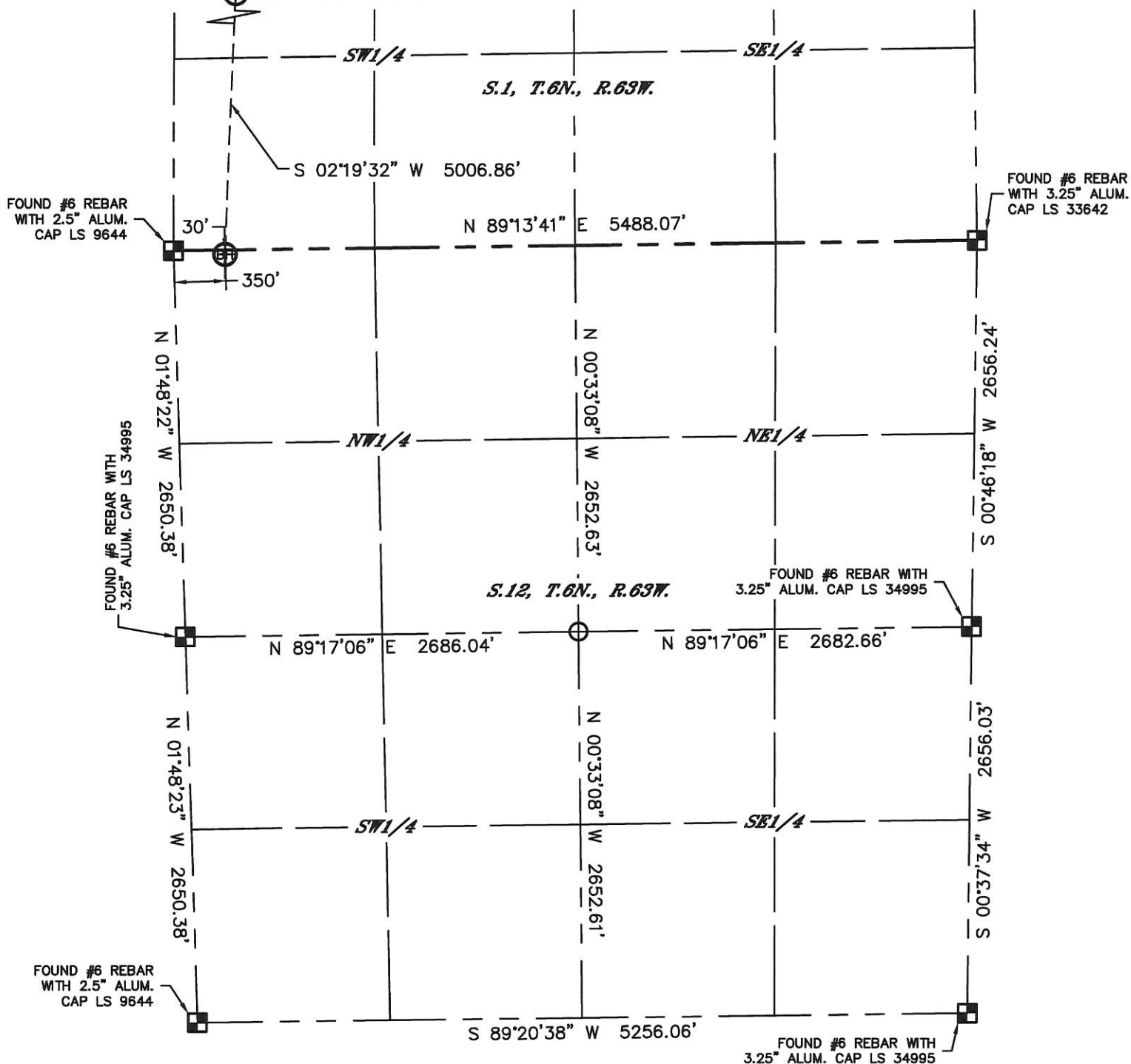
Lat40°, Inc. 1635 Foxtrail Drive, Suite 325 Loveland, CO 970-776-3321

WELL LOCATION CERTIFICATE

THIS MAP DOES NOT REPRESENT A BOUNDARY SURVEY

SECTION: 1
TOWNSHIP: 6N
RANGE: 63W

96 CROW CREEK AA01-785



LEGEND

- = ALIQUOT MONUMENT AS DESCRIBED
- = CALCULATED POSITION

SHEET 2 OF 2

Kyle E. Rutz—On behalf of Lat40°, Inc.
Colorado Licensed Professional Land Surveyor No. 38307
DATE: 3/3/2014
PROJECT#: 2014014

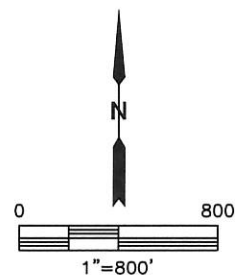
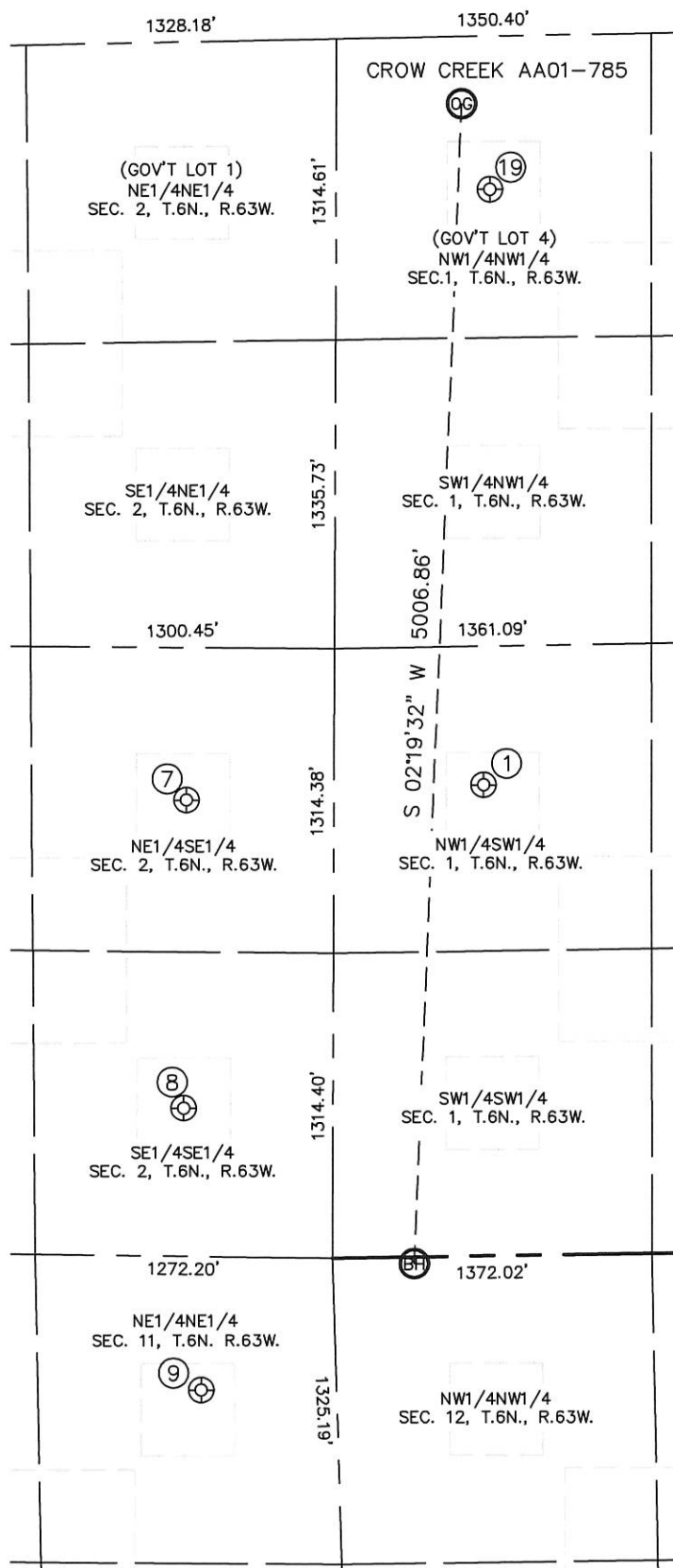




SITE SKETCH

CROW CREEK AA01-785

SECTION: 1
TOWNSHIP: 6N
RANGE: 63W





Lat40°, Inc. 1635 Foxtrail Drive, Suite 325 Loveland, CO 970-776-3321

SITE SKETCH
CROW CREEK AA01-785

SECTION: 1
TOWNSHIP: 6N
RANGE: 63W

WELL NO.	WELL NAME	SHL FOOTAGE				SHL LAT°	SHL LONG°	PDOP	ELEV (FT.)	1/4/1/4
1	KEHN USX AA01-12	2033	FSL	641	FWL	40.51397	-104.39214	2.5	4830	NWSW
7	KOHLHOFF 43-2	1969	FSL	632	FEL	40.51384	-104.39672	2.6	4802	NESE
8	KOHLHOFF 44-2	639	FSL	639	FEL	40.51019	-104.39682	2.2	4831	SESE
9	WELLS RANCH USX AA11-01P	577	FNL	580	FEL	40.50685	-104.39661	2.5	4846	NENE
19	KEHN USX AA 01-04	661	FNL	660	FWL	40.52101	-104.39193	1.6	4811	NWNW