

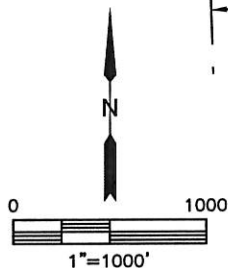
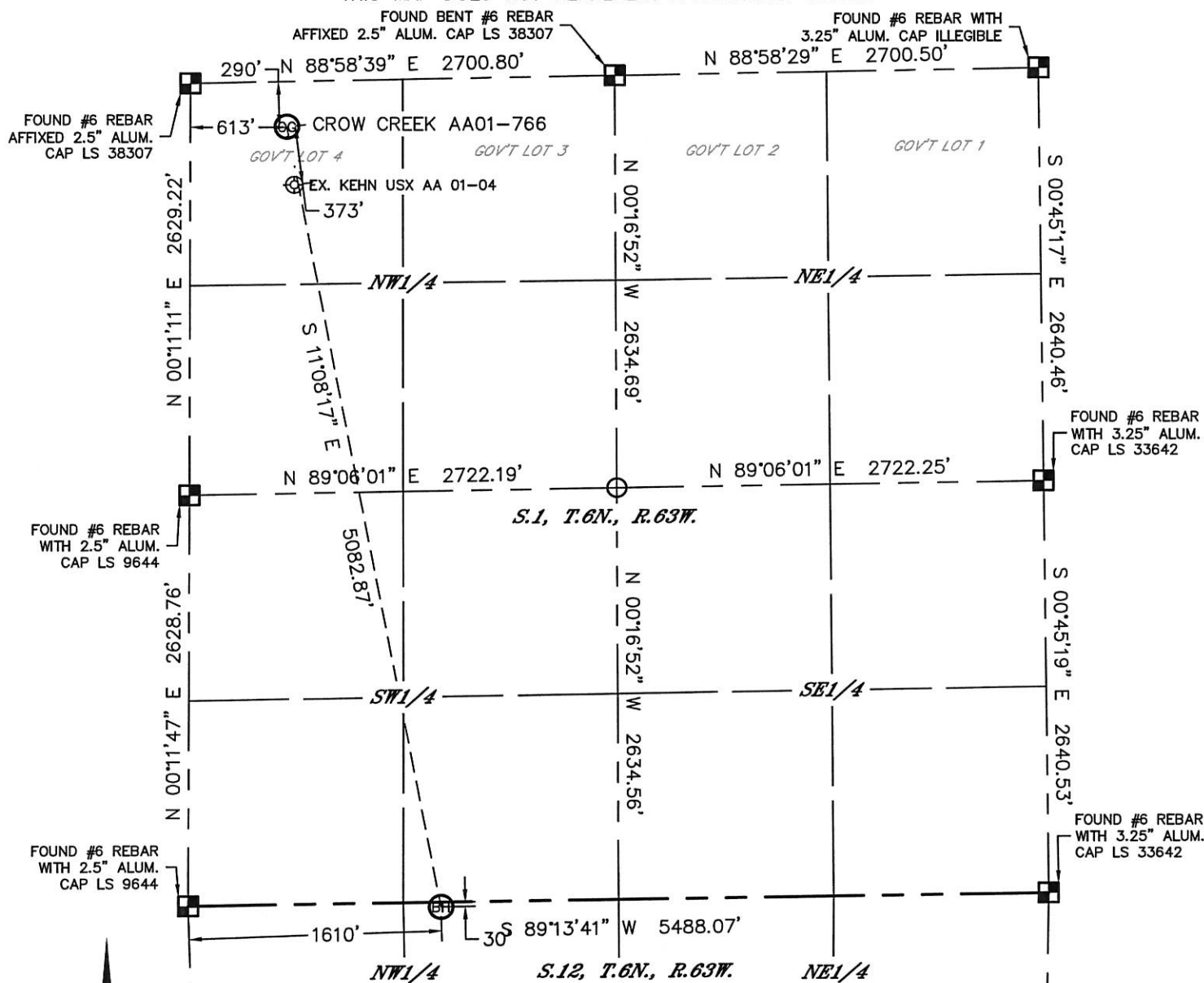


Lat40°, Inc. 1635 Foxtrail Drive, Suite 325 Loveland, CO 970-776-3321

WELL LOCATION CERTIFICATE

SECTION: 1
TOWNSHIP: 6N
RANGE: 63W

THIS MAP DOES NOT REPRESENT A BOUNDARY SURVEY



In accordance with a request from Greg Wilson with Noble Energy Inc. Lat40°, Inc. has determined the surface location of the CROW CREEK AA01-766 to be 290' from the NORTH line and 613' from the WEST line as measured at right angles from the section lines of Section 1, Township 6 North, Range 63 West and the bottom hole to be 30' from the NORTH line and 1610' from the WEST line as measured at right angles from the section lines of Section 12, Township 6 North, Range 63 West of the Sixth Principal Meridian, County of Weld, State of Colorado.

I hereby state that this Well Location Certificate was prepared by me, or under my direct supervision, that the fieldwork was completed on 2/10/2014, for and on behalf of Noble Energy Inc. That this is not a Land Survey Plat or an Improvement Survey Plat, and that it is not to be relied upon for establishment of fence, building, or other future improvement lines.

NOTE:

- 1) Bearings shown are Grid Bearings of the Colorado State Plane Coordinate System, North Zone, North American Datum 1983/2007. The lineal dimensions as contained herein are based upon the "U.S. Survey Foot."
 - 2) Ground elevations are based on an observed GPS elevation (NAVD 1988 DATUM).
 - 3) IMPROVEMENTS: See LOCATION DRAWING for all visible improvements within 500' of disturbed area.
 - 4) SURFACE USE: RANGELAND
 - 5) INSTRUMENT OPERATOR: BRIAN ROTTINGHAUS
 - 6) NEAREST EXISTING WELL: KEHN USX AA 01-04, 373' S
- NEAREST CULTURAL ITEMS:
BUILDING: ±2873' W
BUILDING UNIT: ±3207' W
HIGH OCCUPANCY BUILDING UNIT: 5280'+
DESIGNATED OUTSIDE ACTIVITY AREA: 5280'+
PUBLIC ROAD: COUNTY ROAD 74, 282' N
ABOVEGROUND UTILITY: 262' N
RAILROAD: 5280'+
PROPERTY LINE: 290' N

SURFACE LOCATION

LAT: 40.52203N
LONG: 104.39208W
PDOP: 1.6
ELEV: 4799'
1/4, 1/4: NW1/4NW1/4 (GOV'T LOT 4)

BOTTOM HOLE

LAT: 40.50831N
LONG: 104.38877W

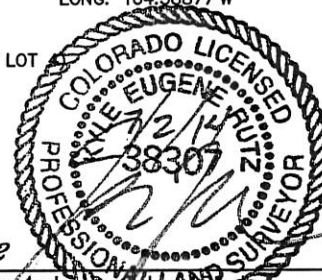
LEGEND

- = ALIQUOT MONUMENT AS DESCRIBED
○ = CALCULATED POSITION

SHEET 1 OF 2

Kyle E. Rutz-On/behalf of Lat40°, Inc.
Colorado Licensed Professional Land Surveyor No. 38307

DATE: 7/2/2014
PROJECT#: 2014014



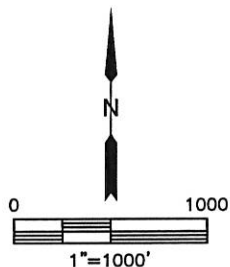
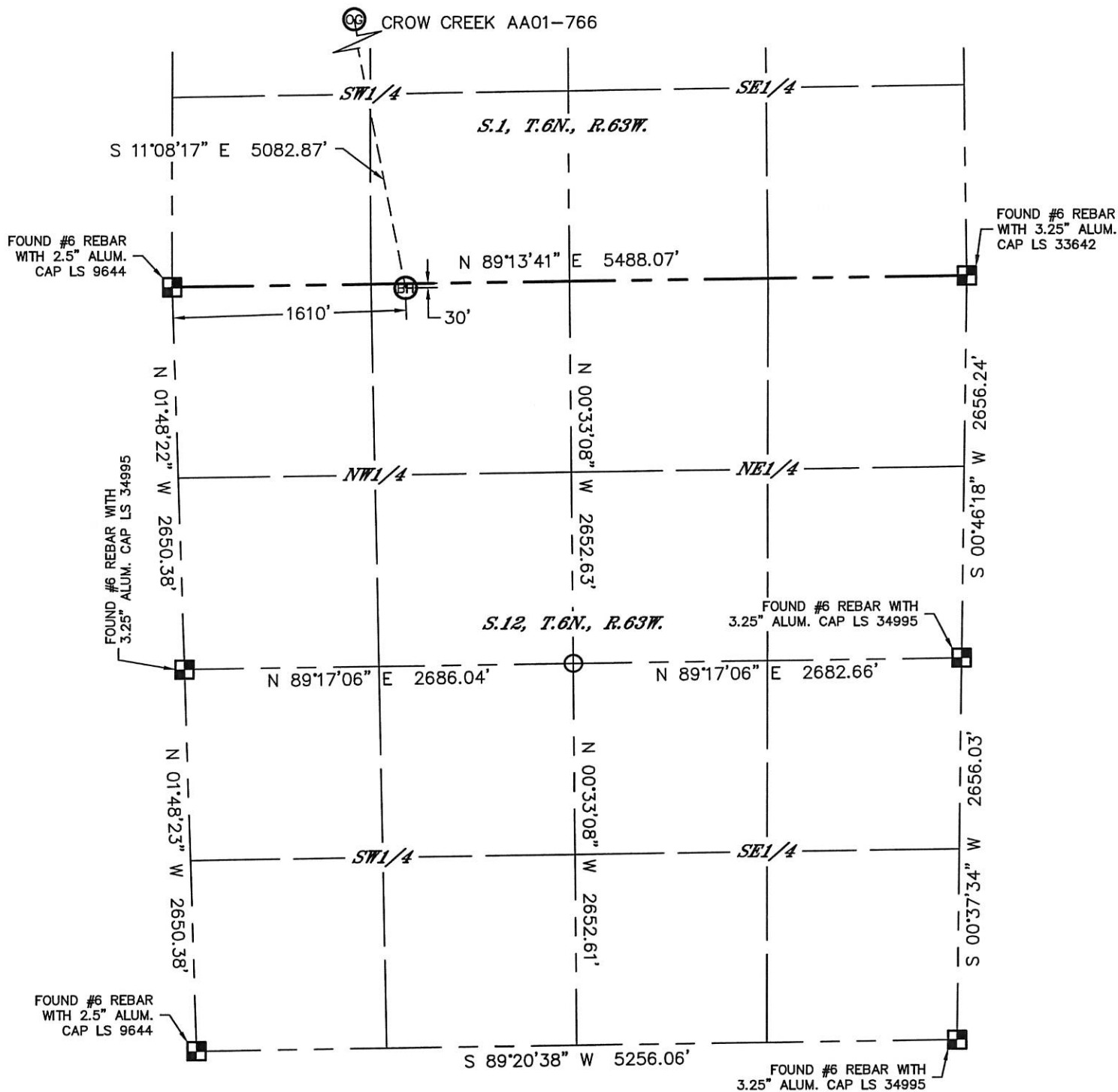


Lat40°, Inc. 1635 Foxtrail Drive, Suite 325 Loveland, CO 970-776-3321

WELL LOCATION CERTIFICATE

THIS MAP DOES NOT REPRESENT A BOUNDARY SURVEY

SECTION: 1
TOWNSHIP: 6N
RANGE: 63W



LEGEND

- = ALIQUOT MONUMENT AS DESCRIBED
- = CALCULATED POSITION

SHEET 2 OF 2

Kyle E. Rutz-On behalf of Lat40°, Inc.
Colorado Licensed Professional
Land Surveyor No. 38307

DATE: 7/2/2014
PROJECT#: 2014014



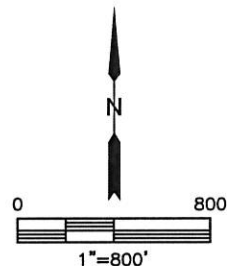
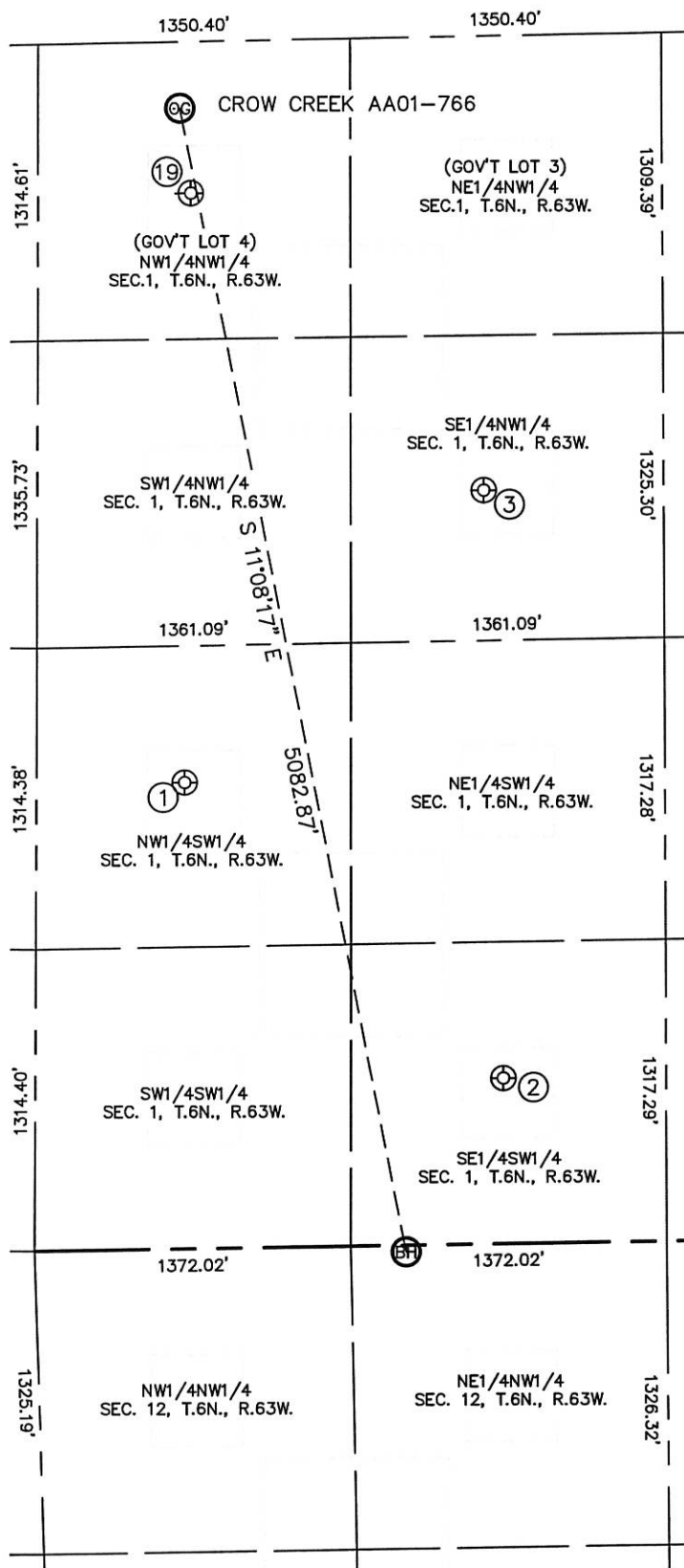


Lat40°, Inc. 1635 Foxtrail Drive, Suite 325 Loveland, CO 970-776-3321

SITE SKETCH

CROW CREEK AA01-766

SECTION: 1
TOWNSHIP: 6N
RANGE: 63W





Lat40°, Inc. 1635 Foxtrail Drive, Suite 325 Loveland, CO 970-776-3321

SITE SKETCH
CROW CREEK AA01-766

SECTION: 1
TOWNSHIP: 6N
RANGE: 63W

WELL NO.	WELL NAME	SHL FOOTAGE				SHL LAT°	SHL LONG°	PDOP	ELEV (FT.)	1/4/1/4
1	KEHN USX AA01-12	2033	FSL	641	FWL	40.51397	-104.39214	2.5	4830	NWSW
2	KEHN USX AA01-14	723	FSL	2030	FWL	40.51038	-104.38722	5.1	4864	SESW
3	KEHN USX AA01-06	1980	FNL	1935	FWL	40.51741	-104.38742	2.5	4838	SENW
19	KEHN USX AA 01-04	661	FNL	660	FWL	40.52101	-104.39193	1.6	4811	NWNW