

HALLIBURTON

iCem[®] Service

CONOCO/PHILLIPS COMPANY EBUSINESS

For: Clint Valentine

Date: Thursday, July 24, 2014

1H

Conoco/Phillips Reserve 3-65 34-35 #1H

Sincerely,

Matt Bulinski

The Road to Excellence Starts with Safety

Sold To #: 352431	Ship To #: 3468479	Quote #:	Sales Order #: 0901521134
Customer: CONOCO/PHILLIPS COMPANY EBUSINESS		Customer Rep: Clint Valentine	
Well Name: RESERVE 3-65 34-35	Well #: 1H	API/UWI #: 05-001-09805-00	
Field: WILDCAT	City (SAP): WATKINS	County/Parish: ADAMS	State: COLORADO
Legal Description: NE NE-35-3S-65W-660FNL-400FEL			
Contractor:		Rig/Platform Name/Num: H&P 280	
Job BOM: 7523			
Well Type: VERTICAL OIL			
Sales Person: HALAMERICA\HB47901		Srv Supervisor: Matthew Bulinski	
Job			

Formation Name			
Formation Depth (MD)	Top		Bottom
Form Type		BHST	219.3 degF
Job depth MD	16349.2ft	Job Depth TVD	
Water Depth		Wk Ht Above Floor	
Perforation Depth (MD)	From	To	

Well Data										
Description	New / Used	Size in	ID in	Weight lbm/ft	Thread	Grade	Top MD ft	Bottom MD ft	Top TVD ft	Bottom TVD ft
Casing		9.625	8.921	36		J-55	0	2021		
Casing		5.5	4.67	23	BTC	P-110	0	16349.2		
Open Hole Section			8.75				2021	16359		

Tools and Accessories									
Type	Size in	Qty	Make	Depth ft		Type	Size in	Qty	Make
Guide Shoe	5.5	1		16349.2		Top Plug	5.5	1	HES
Float Shoe	5.5	1				Bottom Plug	5.5	1	HES
Float Collar	5.5	1		16212.4		SSR plug set	5.5	1	HES
Insert Float	5.5	1				Plug Container	5.5	1	HES
Stage Tool	5.5	1				Centralizers	5.5	1	HES

Miscellaneous Materials									
Gelling Agt		Conc		Surfactant		Conc		Acid Type	
Treatment Fld		Conc		Inhibitor		Conc		Sand Type	
								Qty	Conc
								Size	Qty

Fluid Data										
Stage/Plug #: 1										
Fluid #	Stage Type	Fluid Name	Qty	Qty UoM	Mixing Density lbm/gal	Yield ft3/sack	Mix Fluid Gal	Rate bbl/min	Total Mix Fluid Gal	
1	Clean Spacer III	CLEANSPOACER III	85	bbl	10.5	3.86		5.5		
30.80 gal/bbl		FRESH WATER								
Fluid #	Stage Type	Fluid Name	Qty	Qty UoM	Mixing Density lbm/gal	Yield ft3/sack	Mix Fluid Gal	Rate bbl/min	Total Mix Fluid Gal	

2	ExtendaCem	EXTENDACEM (TM) SYSTEM	665	sack	12	1.94	10.29	8	
0.20 %		SUPER CBL, 50 LB PAIL (100003668)							
10.29 Gal		FRESH WATER							
Fluid #	Stage Type	Fluid Name	Qty	Qty UoM	Mixing Density lbm/gal	Yield ft3/sack	Mix Fluid Gal	Rate bbl/mi n	Total Mix Fluid Gal
3	ExpandaCem B2	EXPANDACEM (TM) SYSTEM	1555	sack	13.8	1.67	7.7	8	
7.70 Gal		FRESH WATER							
0.30 %		SCR-742, 50 LB BAG (102027729)							
Fluid #	Stage Type	Fluid Name	Qty	Qty UoM	Mixing Density lbm/gal	Yield ft3/sack	Mix Fluid Gal	Rate bbl/mi n	Total Mix Fluid Gal
4	MMCR Displacement	MMCR Displacement	90	bbl	8.34			11	
0.10 gal/bbl		MICRO MATRIX CEMENT RETARDER, 5 GAL PAIL (100003781)							
Fluid #	Stage Type	Fluid Name	Qty	Qty UoM	Mixing Density lbm/gal	Yield ft3/sack	Mix Fluid Gal	Rate bbl/mi n	Total Mix Fluid Gal
5	Displacement	Displacement	252	bbl	8.33			6	
Cement Left In Pipe		Amount	136.8ft		Reason		Shoe Joint		
Comment Overall Job went very smooth with low pressures and good returns throughout. 10bbls Spacer to surface with Est. 1565' TOC									

Summary Report



Crew: _____

Job Start Date: 7/24/2014

Sales Order #: 0901521134

WO #: 0901521134

PO/AFE #: NA

Customer: CONOCO/PHILLIPS COMPANY
EBUSINESS
UWI / API Number: 05-001-09805-00
Well Name: RESERVE 3-65 34-35
Well No: 1H

Field: WILDCAT
County/Parish: ADAMS
State: COLORADO
Latitude: 39.752516
Longitude: -104.623248
Sect / Twn / Rng: 35/3/65

Job Type: CMT PRODUCTION
CASING BOM
Service Supervisor: Matthew Bulinski
Cust Rep Name: Clint Valentine
Cust Rep Phone #:

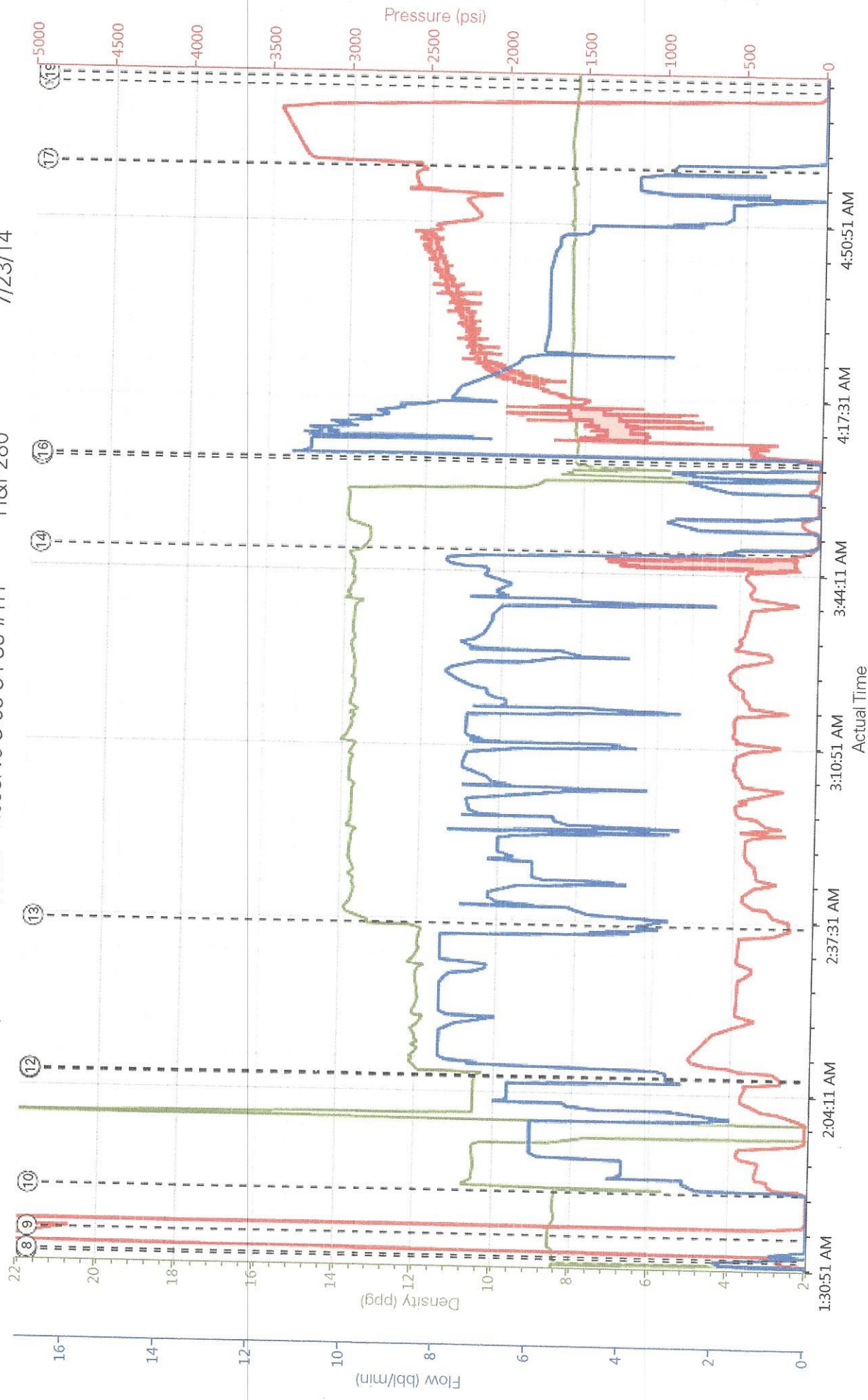
Remarks:

The Information Stated Herein Is Correct	Customer Representative Signature	Date
	Customer Representative Printed Name	

3.1 Job Event Log

Type	Seq. No.	Activity	Graph Label	Date	Time	Source	DH Density (ppg)	PS Pump Press (psi)	Comb Pump Rate (bbl/min)	Comment
Event	1	Depart Yard Safety Meeting	Depart Yard Safety Meeting	7/23/2014	18:30:00	USER				JSA on Job materials, Pre-tripping trucks, and driving to location
Event	2	Arrive At Loc	Arrive At Loc	7/23/2014	21:00:00	USER				Arrived 1hr early and rig is ahead of schedule about to TD.
Event	3	Safety Meeting - Pre Rig-Up	Safety Meeting - Pre Rig-Up	7/23/2014	22:00:00	USER				JSA with Company Man, and HES hands on Hazard hunt, rigging up bulk trucks, and iron to rig.
Event	4	Rig-Up Equipment	Rig-Up Equipment	7/23/2014	22:20:00	USER				
Event	5	Rig-Up Completed	Rig-Up Completed	7/24/2014	00:15:00	USER	8.46	10.00	0.00	
Event	6	Safety Meeting - Pre Job	Safety Meeting - Pre Job	7/24/2014	00:30:00	USER	8.40	9.00	0.00	JSA with Company Man, Rig hands, and HES hands on pump schedule
Event	7	Start Job	Start Job	7/24/2014	01:33:10	COM5	8.47	136.00	0.00	
Event	8	Test Lines	Test Lines	7/24/2014	01:33:41	COM5	8.42	55.00	0.00	5000psi Pressure Test hold 5mins
Event	9	Test Lines	Test Lines	7/24/2014	01:37:42	COM5	8.52	5624.00	0.00	Bump Psi up again to hold 85bbls Clean Spacer, 10.5ppg, 3.86yield, Mixed with rig water on batch mixer; 42.5gal of sem 7, and 42.5gals Musol, and 30gal D-air added into. Pumped at Avg 5.5bbl/min with 340psi
Event	11	Drop Bottom Plug	Drop Bottom Plug	7/24/2014	02:07:50	COM5	10.44	191.00	3.10	Pre-Loaded Company Man verify
Event	12	Pump Lead Cement	Pump Lead Cement	7/24/2014	02:08:06	COM5	11.91	221.00	3.10	665sks Extendacem Lead cmt, 12ppg, 1.94yield, 10.29gal/sk, Mixed with rig water on pump truck. #

								verify by pressurized mud scales 3x's. Pumped at Avg. 8bbl/min with 476psi.			
Event	13	Pump Cap Cement	Pump Tail Cmt	7/24/2014	02:37:12	COM5	13.39	142.00	3.20		
								1555sks Expandacem Tail cmt, 13.8ppg, 1.67yield, 7.7gal/sk, Mixed with rig water on pump truck #			
								verify 4x's by pressurized mud scales. Pumped at Avg 8bbl/min 480psi			
Event	14	Shutdown	Shutdown	7/24/2014	03:49:03	COM5	13.53	52.00	1.80		
								Shutdown wash pump & lines before displacement			
Event	15	Drop Top Plug	Drop Top Plug	7/24/2014	04:05:52	COM5	8.20	-4.00	0.00		
								Pre-Loaded Company Man verify			
								342bbls H2O displacement with first 90bbls of MMCR added. Good returns throughout whole displacement. With 10bbls Spacer to surface and a Est. of 1565" TOC			
Event	16	Pump Displacement	Pump Displacement	7/24/2014	04:06:27	COM5	8.22	-3.00	1.30		
Event	17	Bump Plug	Bump Plug	7/24/2014	05:02:10	COM5	8.40	2690.00	3.10		
								Slowed down last 10bbls to 3bbl/min to bump. Plug landed at 2690psi and brought it to 3290psi for 10mins			
Event	18	End Job	End Job	7/24/2014	05:17:18	COM5	8.28	4.00	0.00		
Event	19	Safety Meeting - Pre Rig-Down	Safety Meeting - Pre Rig-Down	7/24/2014	05:19:00	USER	8.33	3.00	0.00		
								JSA on rigging down bulk trucks, and iron from rig			
Event	20	Rig-Down Equipment	Rig-Down Equipment	7/24/2014	05:30:00	USER					
Event	21	Rig-Down Completed	Rig-Down Completed	7/24/2014	07:00:00	USER					
Event	22	Safety Meeting - Departing Location	Safety Meeting - Departing Location	7/24/2014	07:15:00	USER					
								JSA on Location walk around, pre-tripping trucks, and driving back to Brighton yard			



DH Density (ppg) PS Pump Press (psi) Comb Pump Rate (bbl/min)

- 13.1 Pump Tail Cut 13.39;142.3.2
- 14.3.1 Shutdown 13.53;52.1.8
- 15 Drop Top Plug 8.2;-4.0
- 16 Pump Displacement 8.22;-3.1.3
- 17 Bump Plug 8.4;2690.3.1
- 18 End Job 8.28;4.0
- 19 Safety Meeting - Pre Rig-Down 8.33;3.0
- 20 Rig-Down Equipment n/a;n/a;n/a
- 21 Rig-Down Completed n/a;n/a;n/a
- 22 Safety Meeting - Departing Location n/a;n/a;n/a