



Weatherford®

Tooke Rockies, Inc.
(A Weatherford Company)

884 Implement Dr.
Dickinson, ND 58601
701-227-4408

717 West Platte
PO BOX 435
Casper, WY 82601
307-265-2124

Surface Logging Systems

Scale 1:240 (5"=100') Imperial
Measured Depth Log

Well Name: Reserve 3-65 34-35-1H(Build Sec.)
API: 05-001-09805-01(Build & Lateral)
Location: NE/NE, Sec. 35 T3S-R65W. Arapahoe County, CO
License Number: API-05-001-09805-01
Spud Date: 7/4/2014
Surface Coordinates: 660' FNL & 400' FEL Section 35, T3S, R65W, Adams County, CO.

Region: DJ Basin

Drilling Completed: 7/14/2014

Bottom Hole From SHL, 10.24'N, 687'W, Sec 35, T3S, R65W, Adams County,CO.
Coordinates:
Ground Elevation (ft): 5506' K.B. Elevation (ft): 5530'
Logged Interval (ft): 7096' To: 8118' Total Depth (ft): 8118'
Formation: Niobrara
Type of Drilling Fluid: INVERT/OBM

Printed by MUD.LOG from WellSight Systems 1-800-447-1534 www.WellSight.com

OPERATOR

Company: Conoco/Phillips
Address: Attn: Abby Tomkiewicz
Three Westlake Park, Rm 14013
550 Westlake Park Blvd,Houston, TX 77079,Office: 832-486-2543.

GEOLOGIST

Name: Todd Thiesse, Richard Wagner
Company: Tooke Rockies/ Weatherford SLS
Address: PO Box 435
Casper, WY. 82602
307.265.2124

Supervision

Project Geologist: Barbara Tillotson- Conoco/Phillips
Drilling Engineer: Gary Hamilton, Ben Tolman, John Benge, James Hayes- Conoco/Phillips
Drilling Sup: Bob Strickler- Conoco/Phillips
Company Rep: Richard Perez, Wes Evans, (Day Leads)
Company Rep: Clint Valentine, Mike Weatherly (Night Leads)
Well Site Safety: Rainey Schexnider, Gerald Doty
Contact Geologist: Abby Thornton- Conoco/Phillips
Drilling & Comp. Mgr: Derly Gonzalez-Conoco/Phillips

Comments

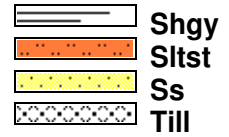
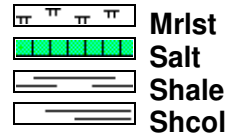
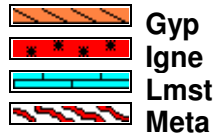
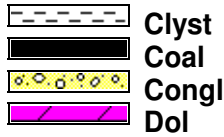
Drilling Co.--H & P, Rig #280

Toolpusher- , Mike Stevens, Josh Coleman

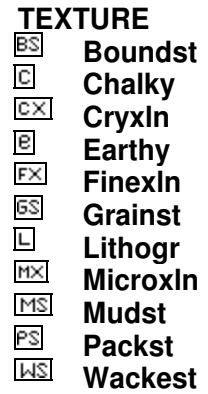
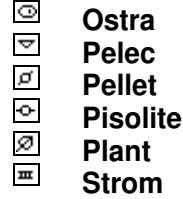
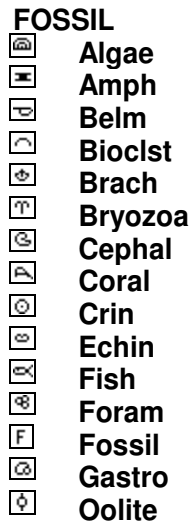
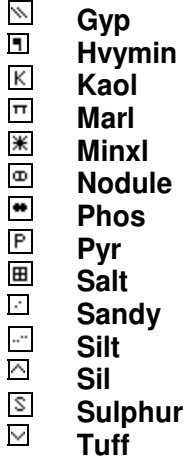
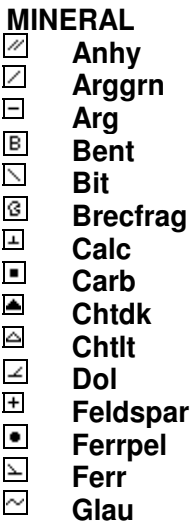
Dir. Co.- Sperry

Mud Co.- Baroid/Haliburton, Dave Howell, Chase Putnam,

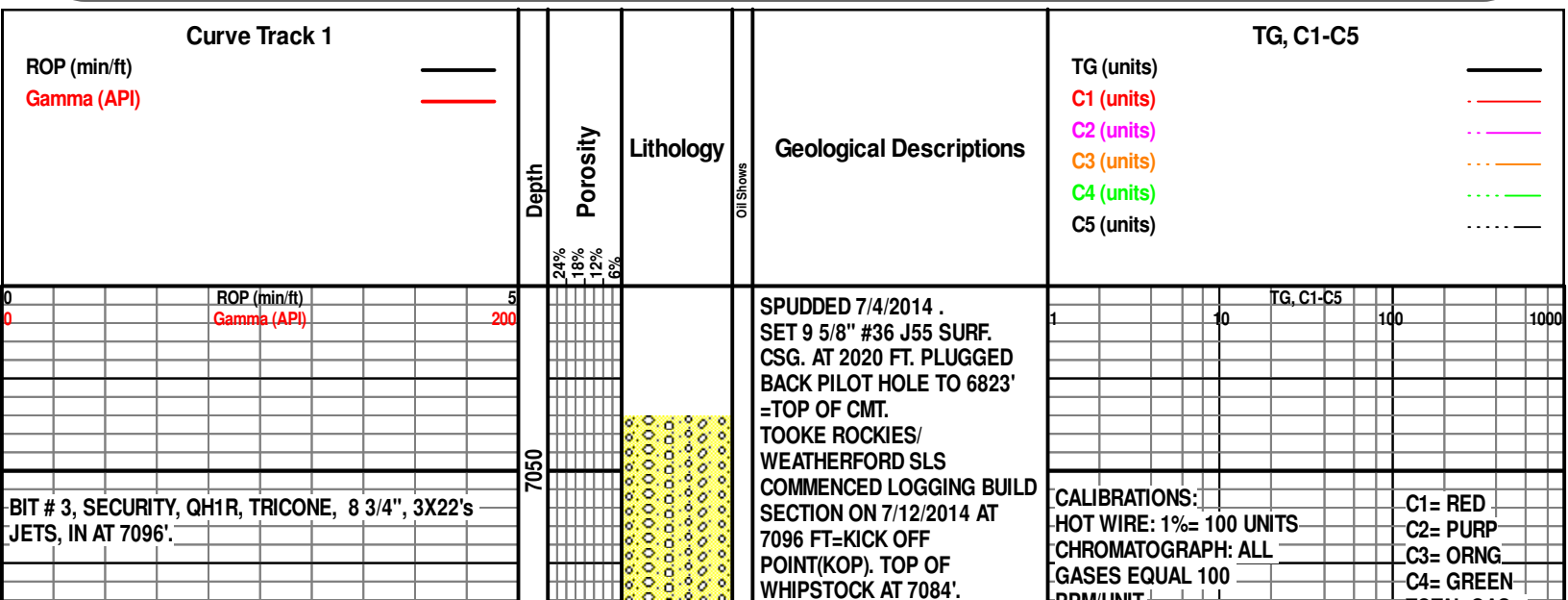
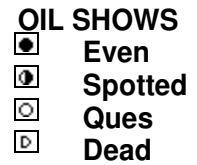
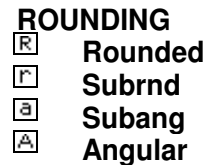
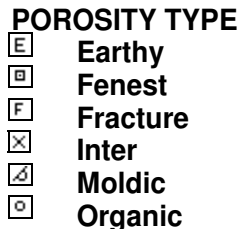
ROCK TYPES

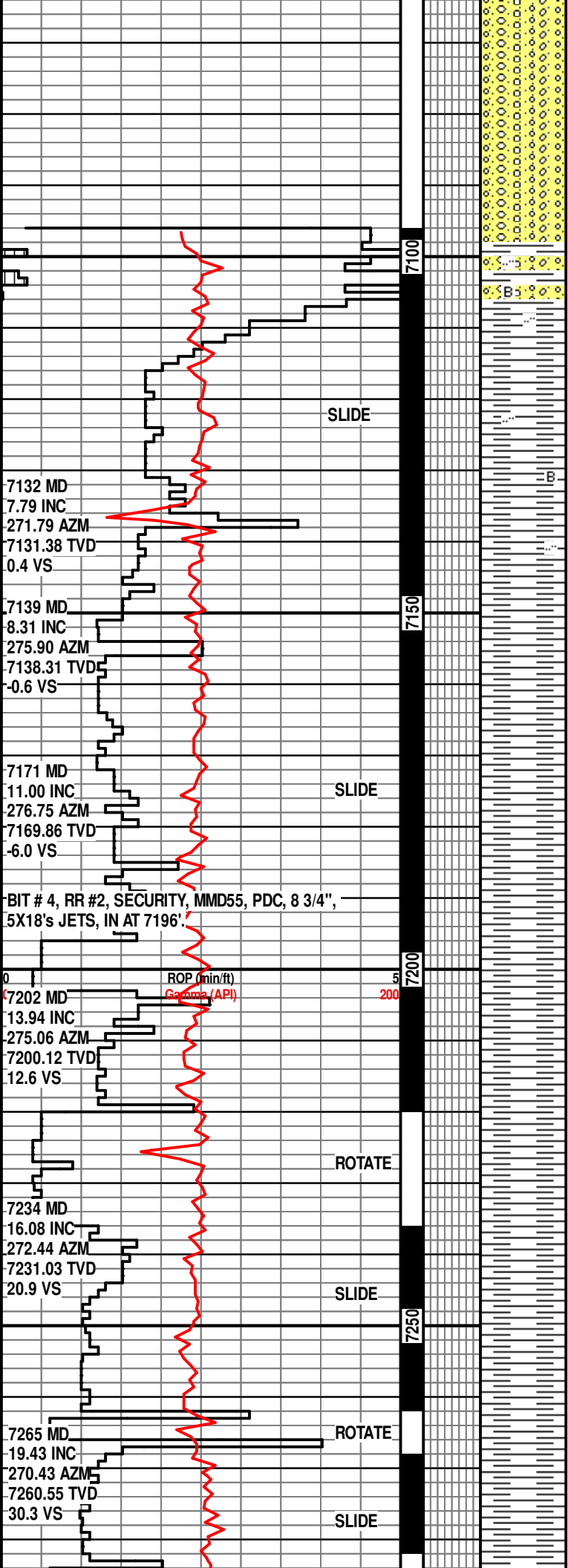


ACCESSORIES



OTHER SYMBOLS





CEMENT

7/10-12/2014

CEMENT

KICK OFF POINT=
7096'.

SH, DK GRY-BLK, MOD SFT,
BLKY TO SL PLATY, NON-SL
CALC, SLTY IN PT. TR WH-GRY
BENT

SH, DK GRY-BLK, MOD SFT,
BLKY TO SL PLATY, NON-SL
CALC, SLTY IN PT.

7/13/2014
TRIP FOR NEW BIT AT
7196'

SH- GY-DK GY, BLKY-PLTY,
SBWXY, CALC, V SFT-FRM.

SH- GY-DK GY, BLKY-PLTY,
SBWXY, CALC, V SFT-FRM.

SH- DK GY-GY, BLKY-PLTY,
SBWXY, CALC, V SFT-FRM.

PPM/UNIT.

TOTAL GAS=
BLACK

MUD MOTOR IS 1.75°.
SURVEY IS 64' BEHIND BIT.
GAMMA IS 30.91' BEHIND BIT.

WT IN 9.2 OUT 9.2
VIS IN 54 OUT 54

TRIP GAS= 77u

WT. 9.25
VIS. 51
PV. 17
YP. 18

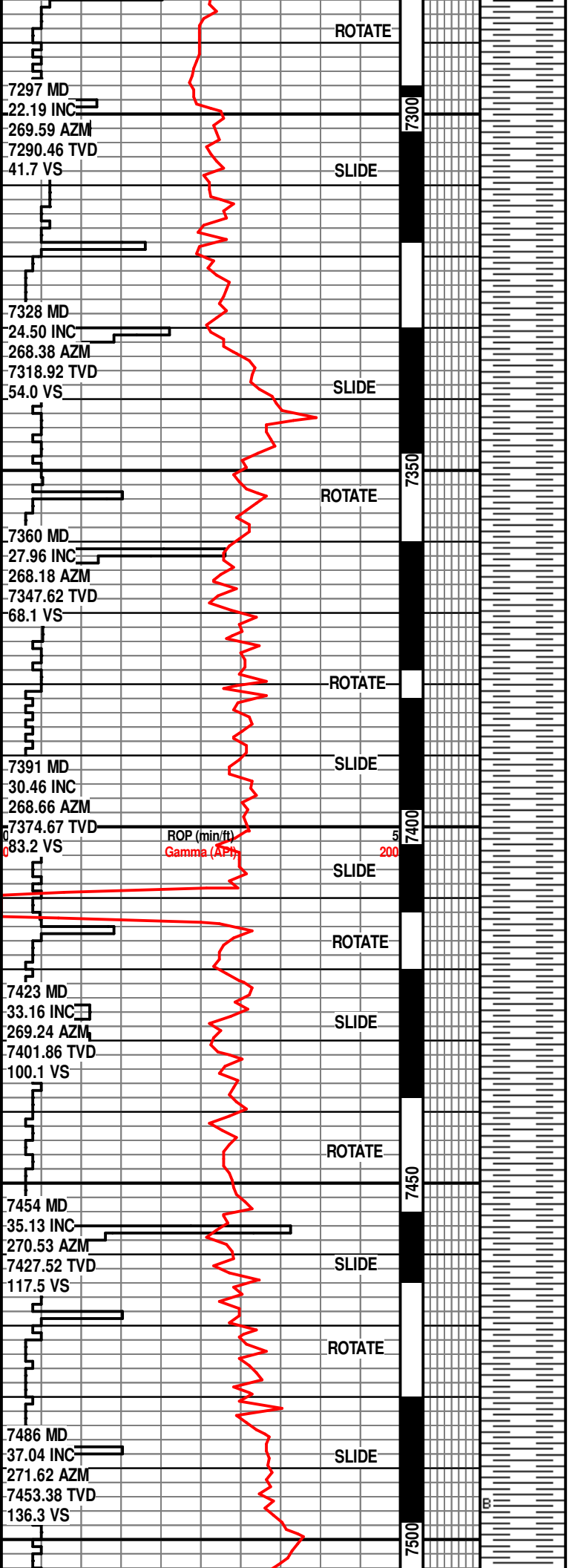
HTHP. 6.0@250°
CORR SLDS. 6.1%
NAP/H2O. 60:40%
Cl. 79000 mg/L
Ca. 30800 mg/L
CACI2. 29.85 ppb
LGS/HGS. 5.0/0.9 %
WPS. 254672 ppm

TRIP GAS= 73u

WT IN 9.1+ OUT 9.1
VIS IN 53 OUT 48

WOB 3-7 K
RPM 20
SPP 2341
SPM. 110
GPM. 450

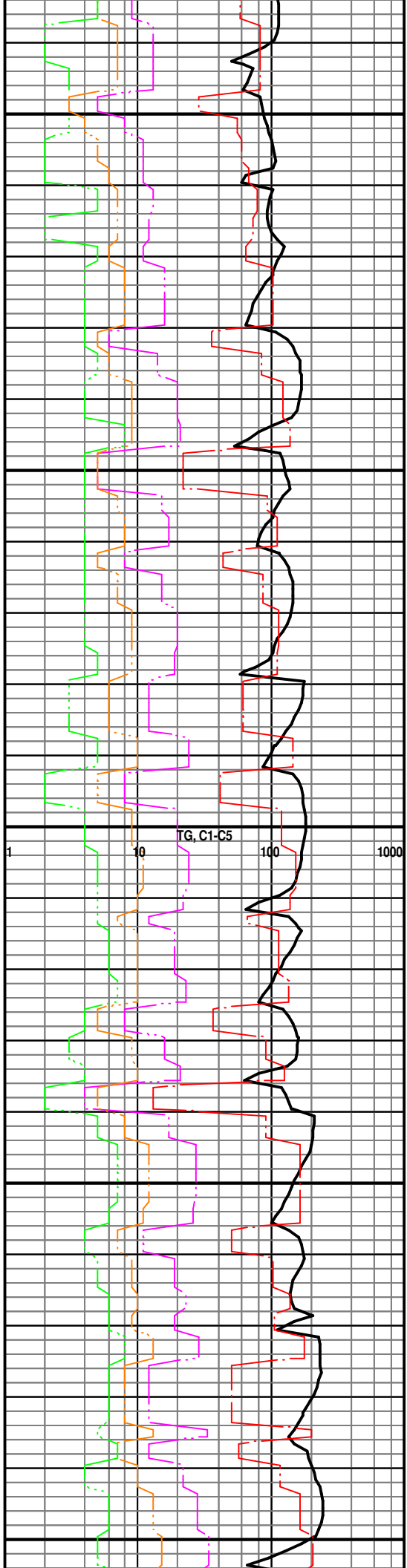
WT IN 9.2 OUT 9.2
VIS IN 53 OUT 53

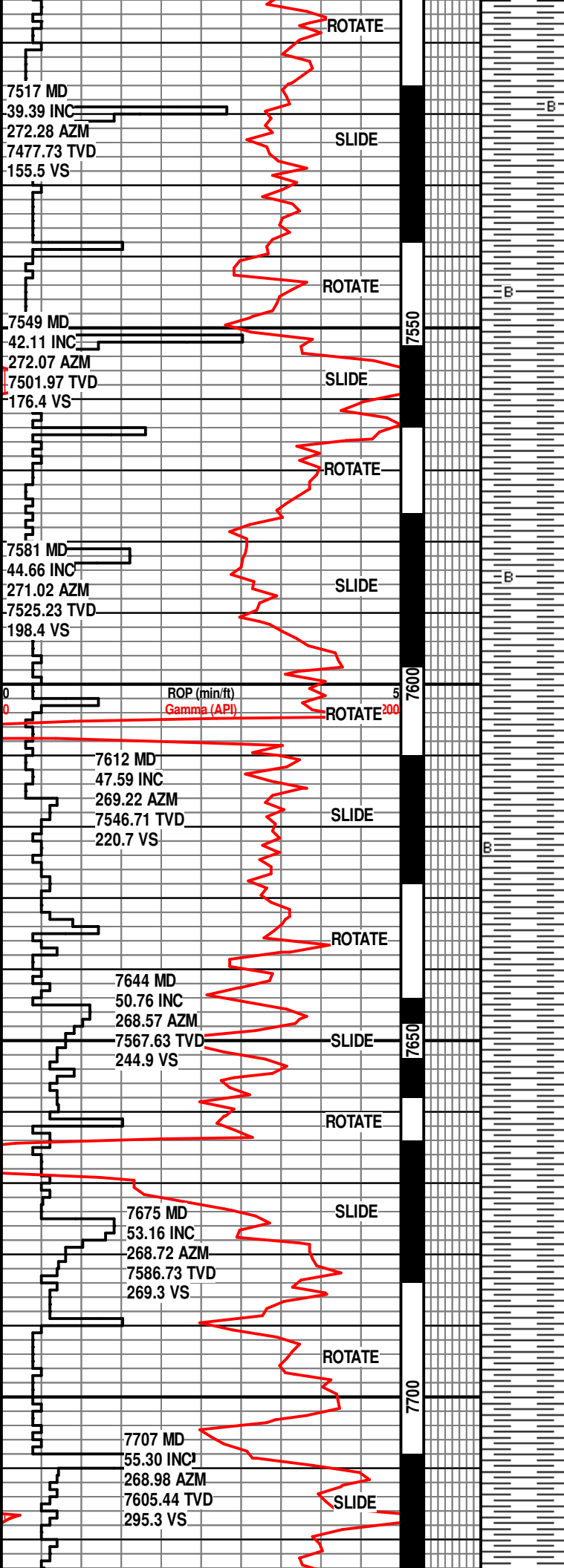


SH- DK GY-GY, BLKY-PLTY, SBWXY, CALC, V SFT-FRM.

SH- DK GY-GY, BLKY-PLTY, SBWXY, CALC, V SFT-FRM.

SH- DK GY-GY, BLKY-PLTY, SBWXY, CALC, V SFT-FRM.





SH- DK GY-GY, BLKY-PLTY,
BCG MORE SUB FISSILE TO
FISSILE, SBWXY, CALC, V
SFT-FRM, TR WH-TAN BENT

SH- DK GY-GY, BLKY-PLTY,
BCG MORE SUB FISSILE TO
FISSILE, SBWXY, CALC, V
SFT-FRM, TR WH-TAN BENT

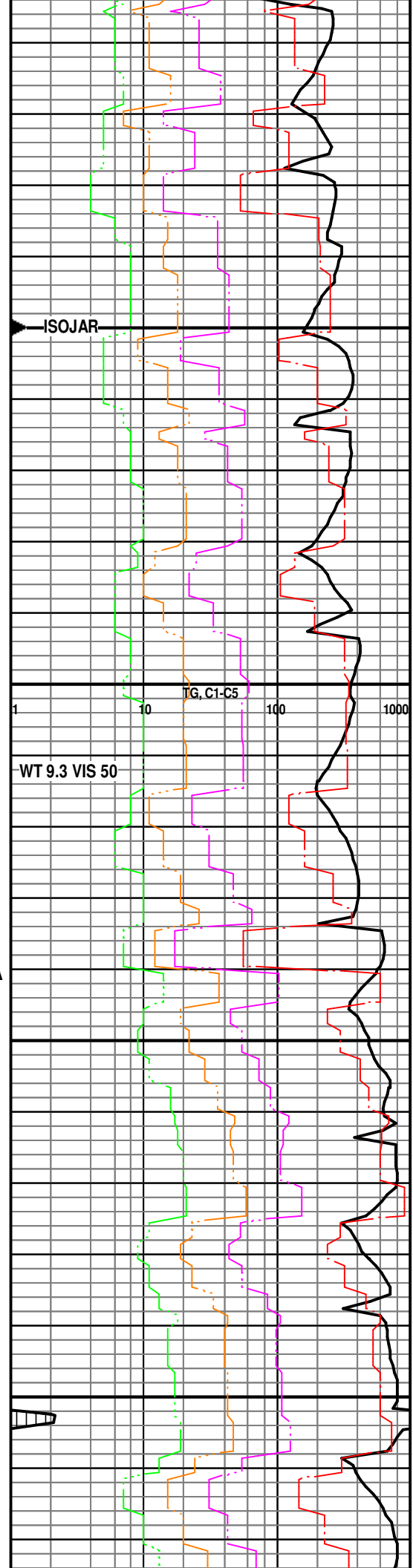
SH- DK GY-GY, BLKY-PLTY,
BCG MORE SUB FISSILE TO
FISSILE, SBWXY, CALC, V
SFT-FRM, TR WH-TAN BENT

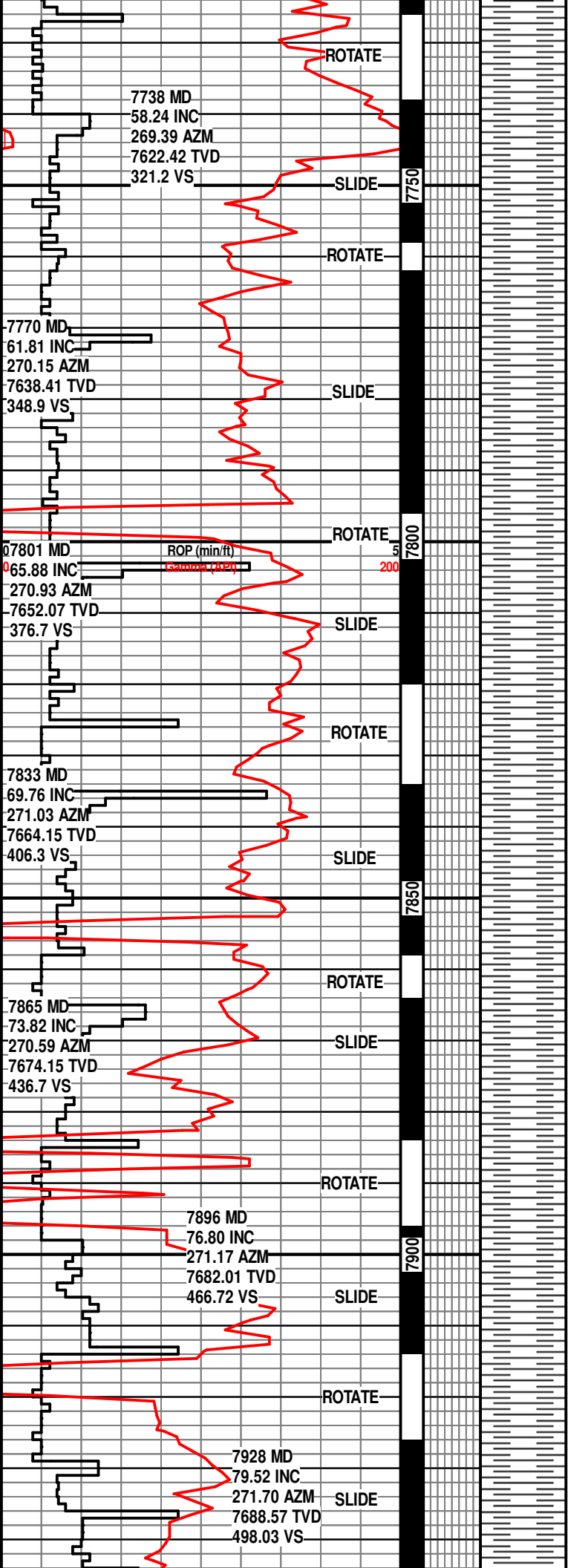
SMPL TOP NIOBRARA
AT 7635'.

SH- DK GY-GY, BLKY-PLTY, ,
SBWXY, CALC, V SFT-FRM, TR
WH-TAN BENT

7/14/2014

SH- DK GY-GY, BLKY-PLTY, ,
SBWXY, CALC, V SFT-FRM, TR
WH-TAN BENT





SH- DK GY-GY, BLKY-PLTY, ,
SBWXY, CALC, V SFT-FRM, TR
WH-TAN BENT

ISOJAR

WT IN 9.3 OUT 9.2
VIS IN 51 OUT 49

SH- DK GY-GY, BLKY-PLTY, ,
SBWXY, CALC, V SFT-FRM, TR
WH-TAN BENT

WT. 9.30
VIS. 53
PV. 19
YP. 19
HTHP. 5.8@250°
CORR SLDS. 6.1%
NAP/H2O. 60:40%
Cl. 80000 mg/L
Ca. 32400 mg/L
CACI2. 31.4 ppb
Excess Lime. 1.29 ppb.
LGS/HGS. 5.1/1.0 %
Elec. Stab. 296 V
TAU. 7.43 lbs/100'sq.

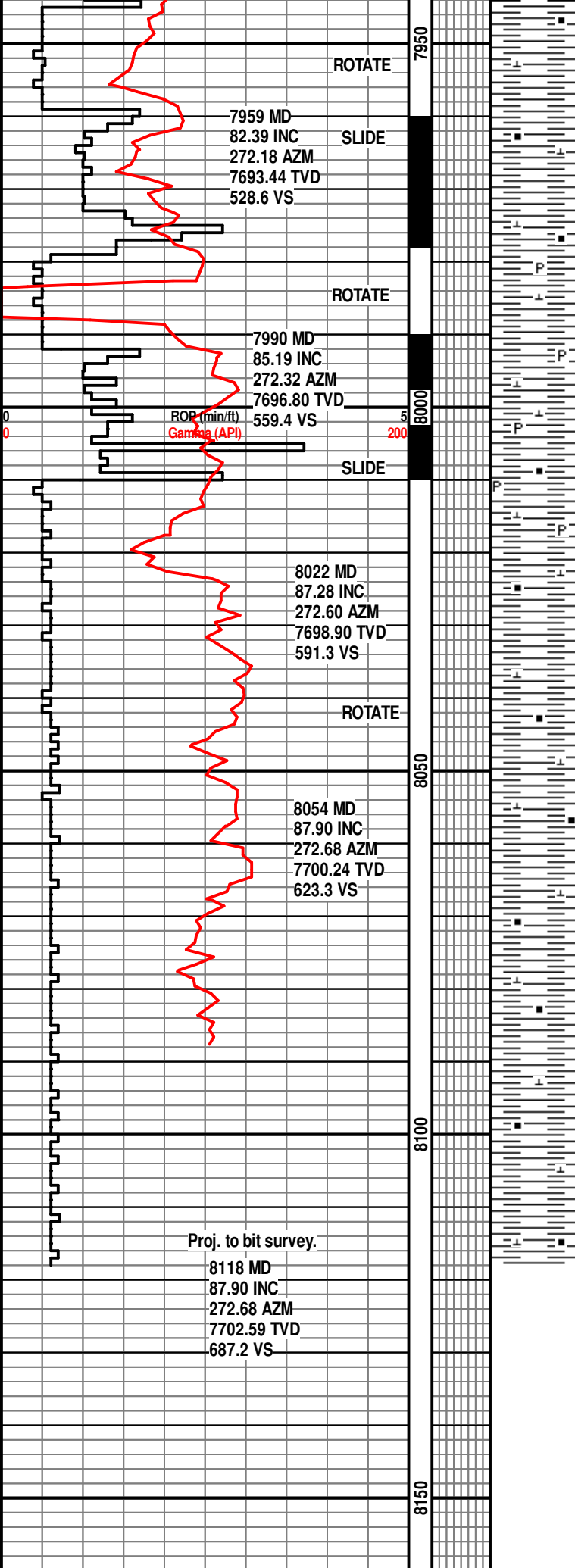
WT IN 9.3 OUT 9.2
VIS IN 49 OUT 48

SH- DK GY-GY, BLKY-PLTY, ,
SBWXY, CALC, V SFT-FRM, TR
WH-TAN BENT

SH- DK GY-GY, BLKY-PLTY, ,
SBWXY, CALC, V SFT-FRM, TR
WH-TAN BENT

SH- DK GY-GY, BLKY-PLTY, ,
SBWXY, CALC, V SFT-FRM, TR
WH-TAN BENT

TG, C1-C5
1 10 100 1000



SH- DK GY-BLK, BLKY-PLTY,
SBWXY, CARB, V CALC-LMY,
SME CALC FL FRAC &
CALCITE, SFT-FRM. W/ TR
PYR.

SH- DK GY-BLK, BLKY-PLTY,
SBWXY, CARB, V CALC-LMY,
SME CALC FL FRAC &
CALCITE, SFT-FRM. W/ TR
PYR.

SH- DK GY-BLK, BLKY-PLTY,
SBWXY, CARB, V CALC-LMY,
OCC CALC FL FRAC &
CALCITE, SFT-FRM. W/ TR
PYR.

SH- BLK-DK GY, BLKY-PLTY,
SBWXY, CARB, V CALC-LMY,
CALC FL FRAC & CALCITE,
SFT-FRM.

SH- BLK-DK GY, BLKY-PLTY,
SBWXY, CARB, V CALC-LMY,
CALC FL FRAC & CALCITE,
SFT-FRM.

SH- BLK-DK GY, BLKY-PLTY,
SBWXY, CARB, V CALC-LMY,
TR CALC FL FRAC & CALCITE,
SFT-FRM

**TD THE BUILD SEC.
AT 8118' MD ON
7/14/2014 AT 7:45 AM.
DRILLERS DEPTH.**

Please refer to the Horz. Log
for the remainder of this well.

