



Weatherford®

Tooke Rockies, Inc.
(A Weatherford Company)

884 Implement Dr.
Dickinson, ND 58601
701-227-4408

717 West Platte
PO BOX 435
Casper, WY 82601
307-265-2124

Surface Logging Systems

Scale 1:240 (5"=100') Imperial
Measured Depth Log

Well Name: Reserve 3-65 34-35-1H(Pilot Hole)
API: 05-001-09805-00 & 05-001-09805-01
Location: NeNe Section 35, T3S, R65W
License Number: 05-001-09805-00
Spud Date: 7/4/2014
Surface Coordinates: 660' FNL & 400' FEL Section 35, T3S, R65W, Adams Co., CO
Region: DJ Basin
Drilling Completed: 7/9/2014
Bottom Hole Coordinates: 660' FNL & 1258' FWL Section 34, T3S, R65W, Adams Co., CO
Ground Elevation (ft): 5506' GRD
Logged Interval (ft): To: K.B. Elevation (ft): 5530' KB
Formation: Niobrara
Type of Drilling Fluid: INVERT/OBM
Total Depth (ft):

Printed by MUD.LOG from WellSight Systems 1-800-447-1534 www.WellSight.com

OPERATOR

Company: Conoco/Phillips
Address: Attn: Abby Tomkiewicz
Three Westlake Park, Rm 14013
550 Westlake Park Blvd, Houston, TX 77079, Office: 832-486-2543.

GEOLOGIST

Name: Todd Thiesse, Richard Wagner
Company: Tooke Rockies/ Weatherford SLS
Address: PO Box 435
Casper, WY. 82602
307.265.2124

Supervision

Project Geologist: Barbara Tillotson- Conoco/Phillips
Drilling Engineer: Gary Hamilton, Ben Tolman, John Bengé, James Hayes- Conoco/Phillips
Drilling Sup: Bob Strickler- Conoco/Phillips
Company Rep: Richard Perez, Wes Evans, (Day Leads)
Company Rep: Clint Valintine, Mike Weatherly (Night Leads)
Well Site Safety: Rainey Schexnider,
Contact Geologist: Abby Tomkiewicz- Conoco/Phillips
Drilling & Comp. Mgr: Derly Gonzalez-Conoco/Phillips

Comments

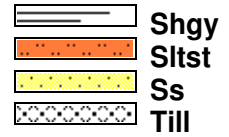
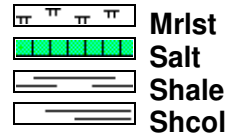
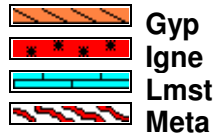
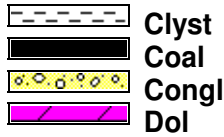
Drilling Co.--H & P, Rig #280

Toolpusher- , Mike Stevens, Josh Coleman

Dir. Co.- Sperry

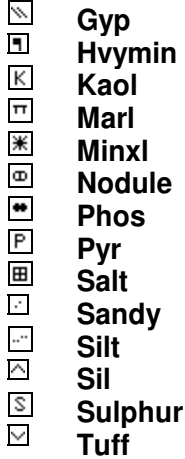
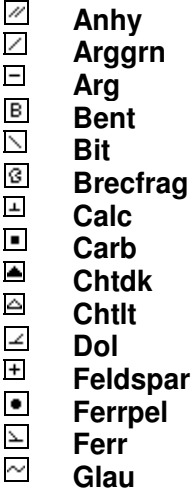
Mud Co.- Baroid/Haliburton, Dave Howell, Chase Putnam,

ROCK TYPES

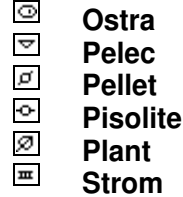
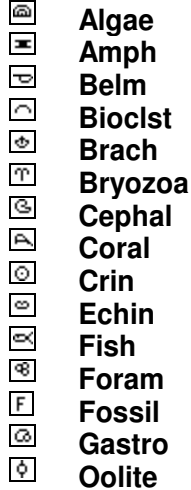


ACCESSORIES

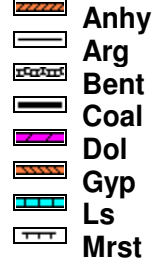
MINERAL



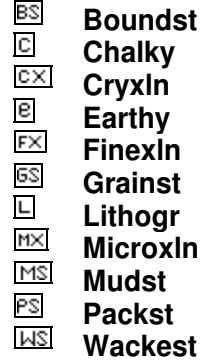
FOSSIL



STRINGER



TEXTURE



OTHER SYMBOLS

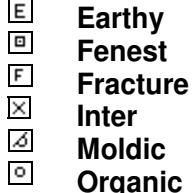
INTERVALS



EVENTS



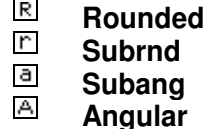
POROSITY TYPE



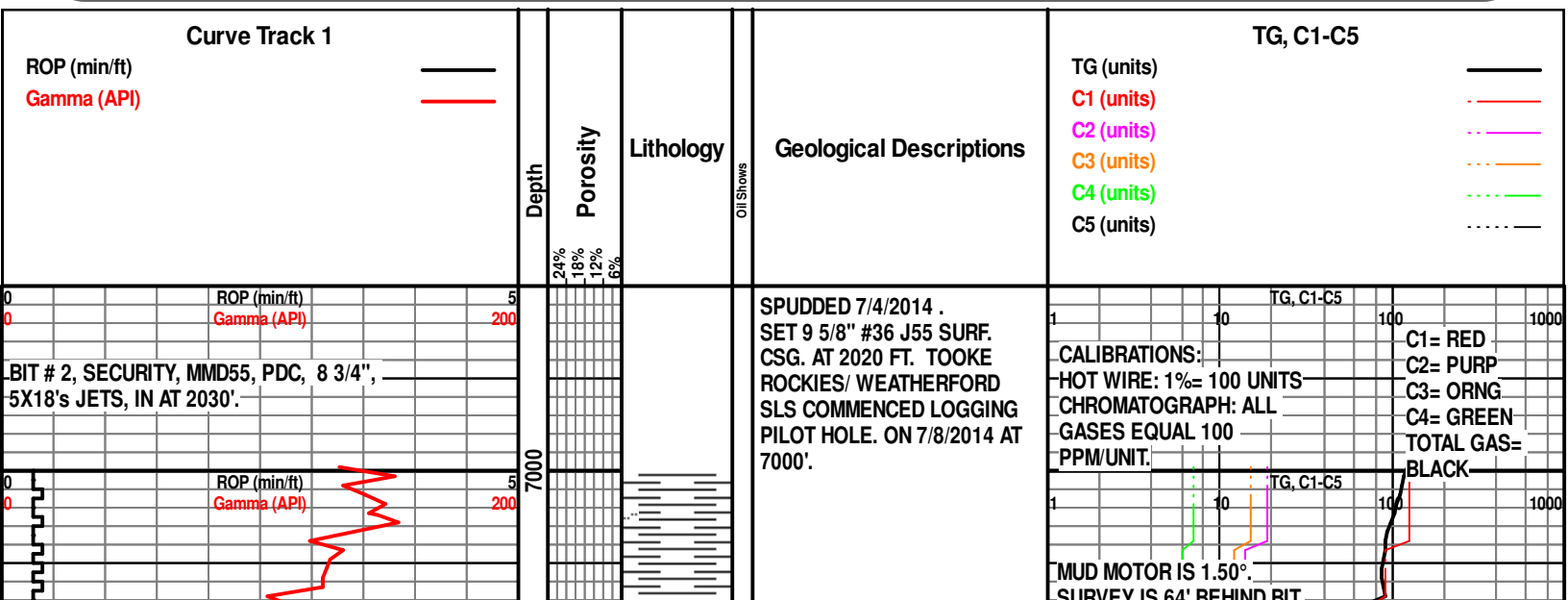
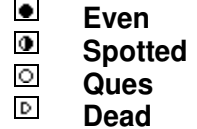
SORTING

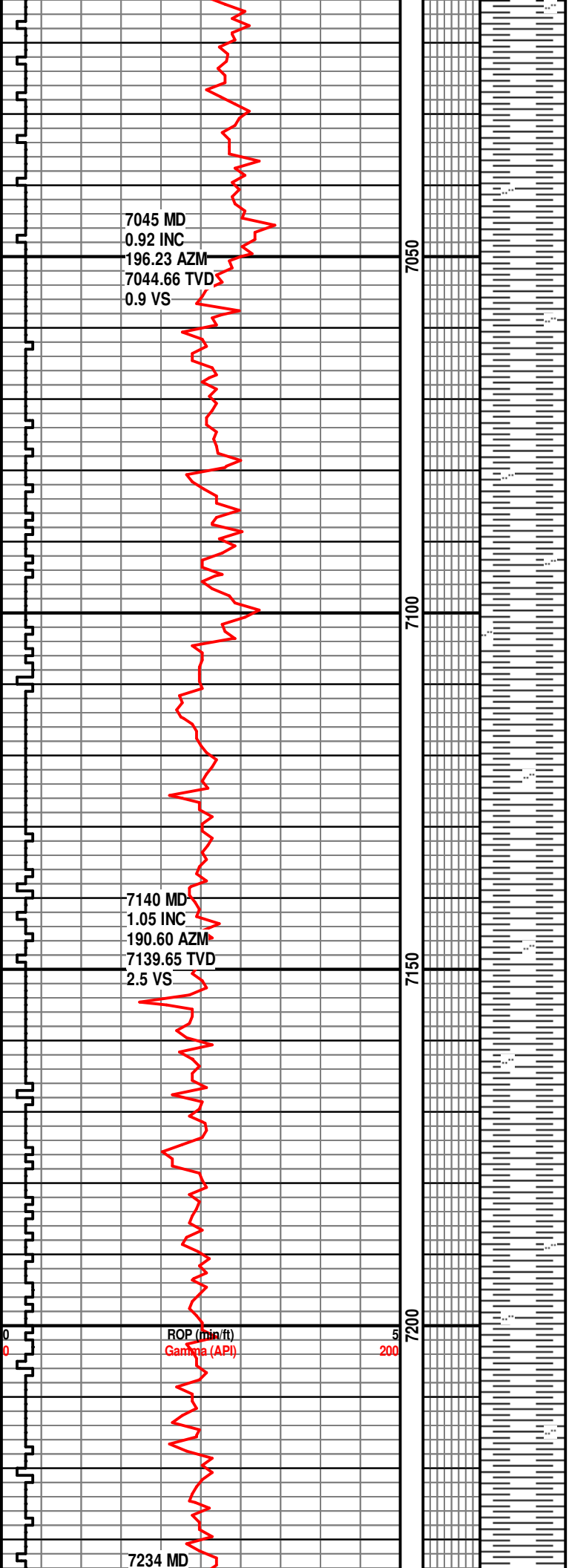


ROUNDING



OIL SHOWS





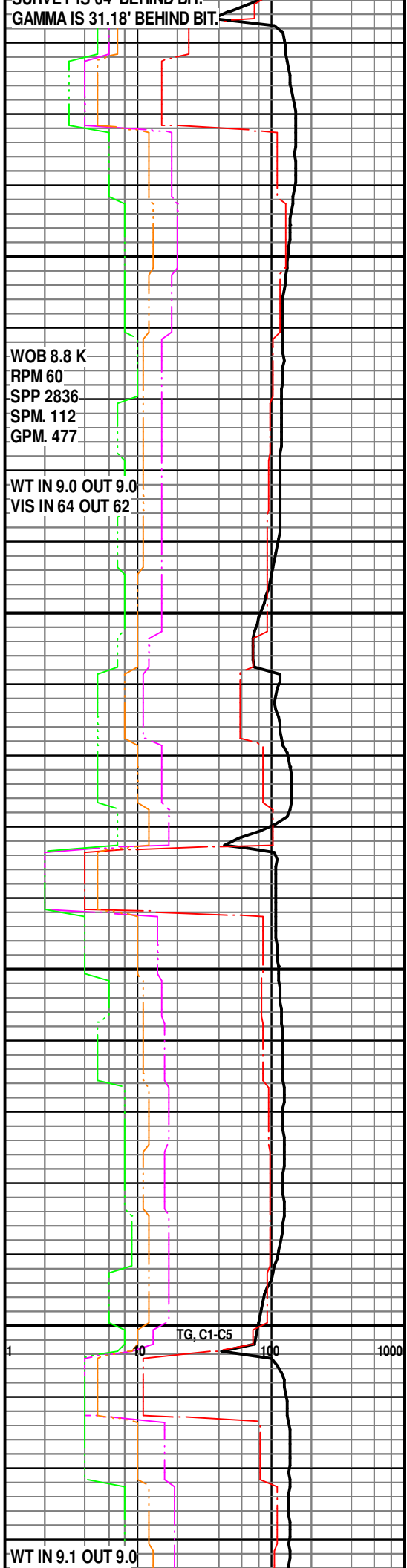
SH, GRY-DK GRY, V/SFT TO
MOD FM, BLKY, SLTY IN PT,
MIC, NON TO VERY SL CALC

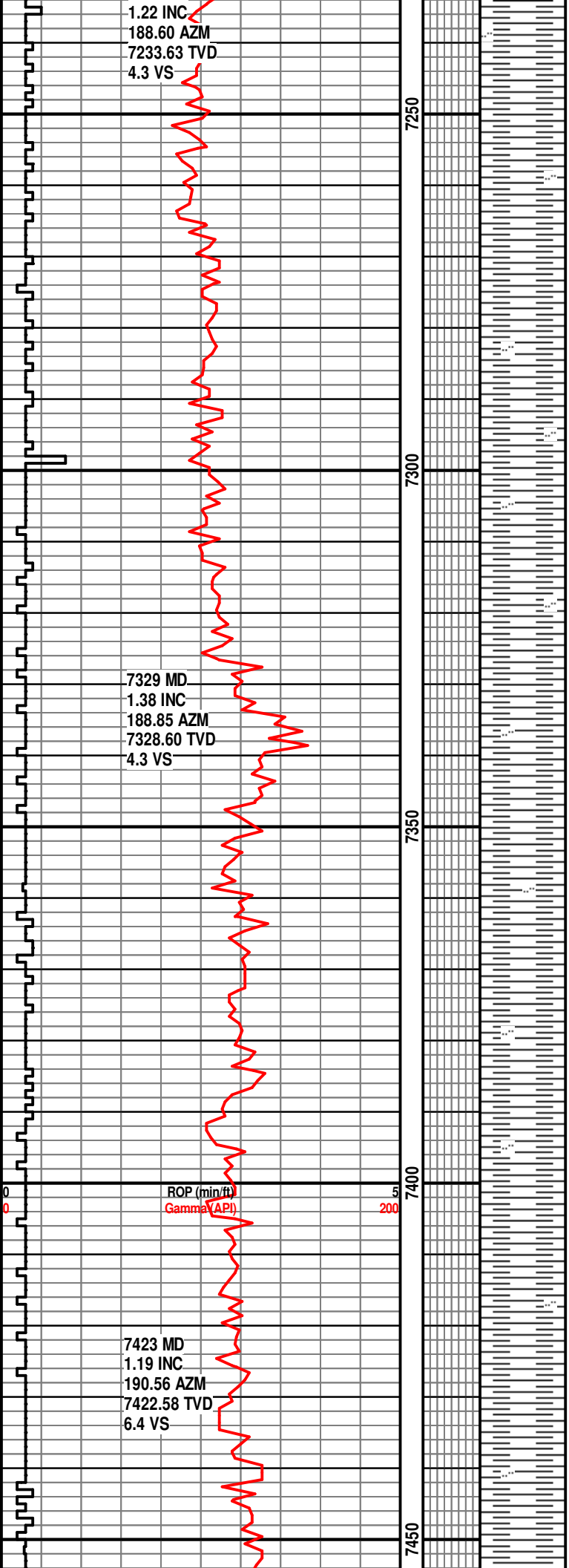
SH, GRY-DK GRY, V/SFT TO
MOD FM, BLKY, SLTY IN PT,
MIC, NON TO VERY SL CALC

SH, GRY-DK GRY, V/SFT TO
MOD FM, BLKY, SLTY IN PT,
MIC, NON TO VERY SL CALC

SH, GRY-DK GRY, V/SFT TO
MOD FM, BLKY, SLTY IN PT,
MIC, NON TO VERY SL CALC

SH, GRY-DK GRY, V/SFT TO
MOD FM, BLKY TO SUB
FISSILE, SLTY IN PT, MIC, NON
TO VERY SL CALC



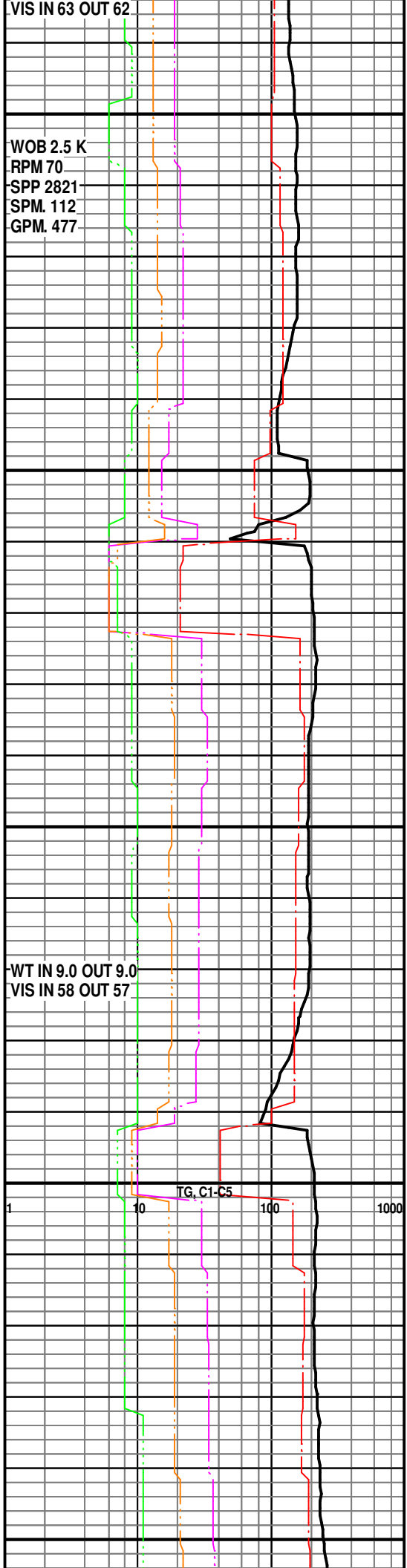


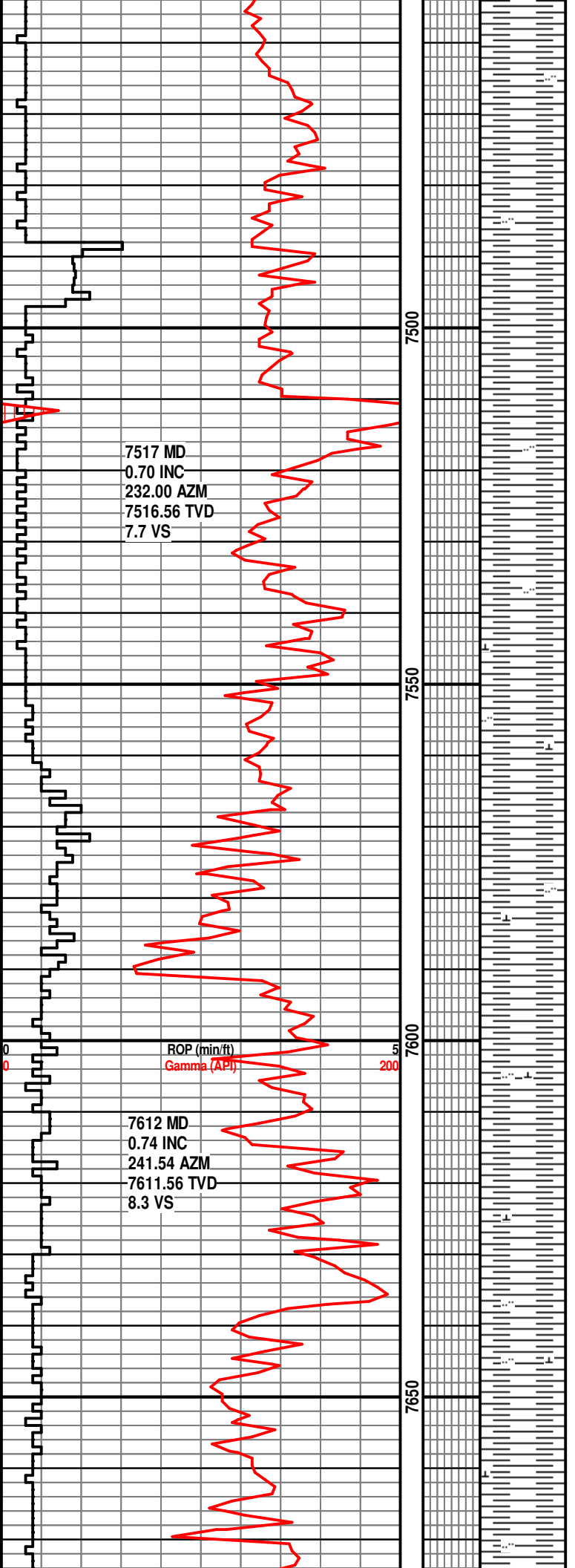
SH, GRY-DK GRY, V/SFT TO
MOD FM, BLKY TO SUB
FISSILE, SLTY IN PT, MIC, NON
TO VERY SL CALC

SH, GRY-DK GRY, V/SFT TO
MOD FM, BLKY TO SUB
FISSILE, SLTY IN PT, MIC, NON
TO VERY SL CALC

SH, GRY-DK GRY, V/SFT TO
MOD FM, BLKY TO SUB
FISSILE, SLTY IN PT, MIC, NON
TO VERY SL CALC

SH, GRY-DK GRY, V/SFT TO
MOD FM, BLKY TO SUB
FISSILE, SLTY IN PT, MIC, NON
TO VERY SL CALC





SH, GRY-DK GRY, V/SFT TO
MOD FM, BLKY TO SUB
FISSILE, SLTY IN PT, MIC, NON
TO VERY SL CALC

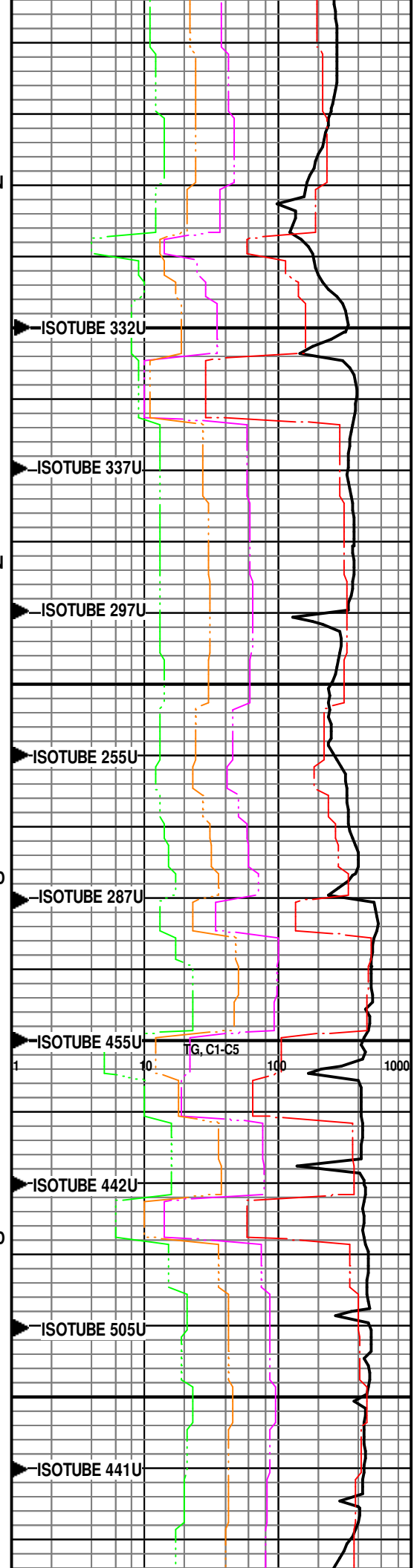
SH, GRY-DK GRY, V/SFT TO
MOD FM, BLKY TO SUB
FISSILE, SLTY IN PT, MIC, NON
TO VERY SL CALC

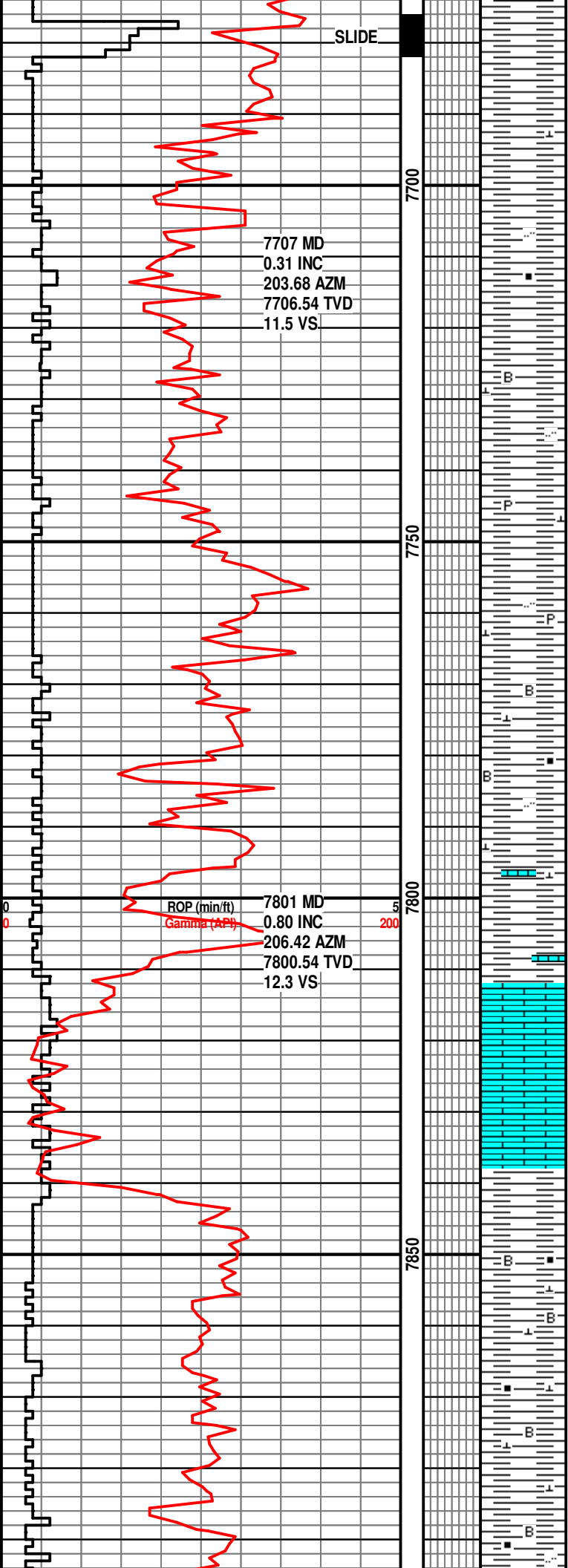
**SMPL TOP OF
NIOBRARA AT 7549'.**

SH, GRY-DK GRY, V/SFT TO
MOD FM, BLKY TO SUB
FISSILE, SLTY IN PT, MIC, MOD
TO V/CALC

SH, GRY-DK GRY, V/SFT TO
MOD FM, BLKY TO SUB
FISSILE, SLTY IN PT, MIC, MOD
TO V/CALC

SH, GRY-DK GRY, V/SFT TO
MOD FM. BLKY TO SUB





MOD FM, BLKY TO SUB
FISSILE, SLTY IN PT, MIC, MOD
TO V/CALC

SH, GRY-DK GRY, V/SFT TO
MOD FM, BLKY TO SUB
FISSILE, SLTY IN PT, MIC, MOD
TO V/CALC

SH, GRY-DK GRY, V/SFT TO
MOD FM, BLKY TO SUB
FISSILE, SLTY IN PT, MIC, MOD
TO V/CALC

SH- DK GY-GY, BLK,
BLKY-PLTY, SBWXY, V
CALC-LMY, CARB, TR PYR,
OCC CALCITE & SME CALC FL
FRAC, SFT-FRM, TR BENT-LT
GY.

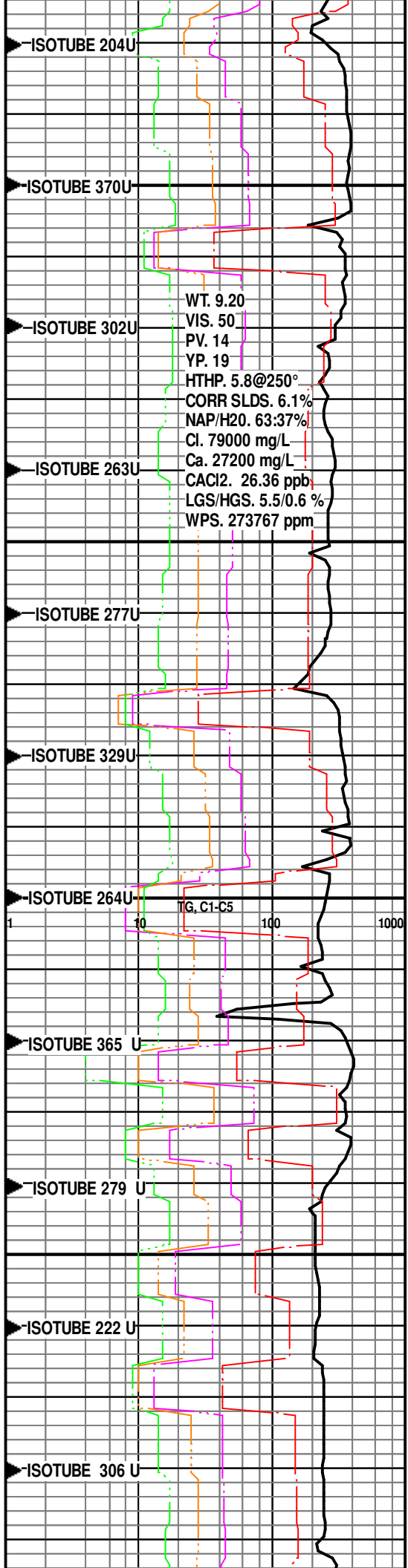
SMPL TOP OF FT.
HAYS AT 7808'.

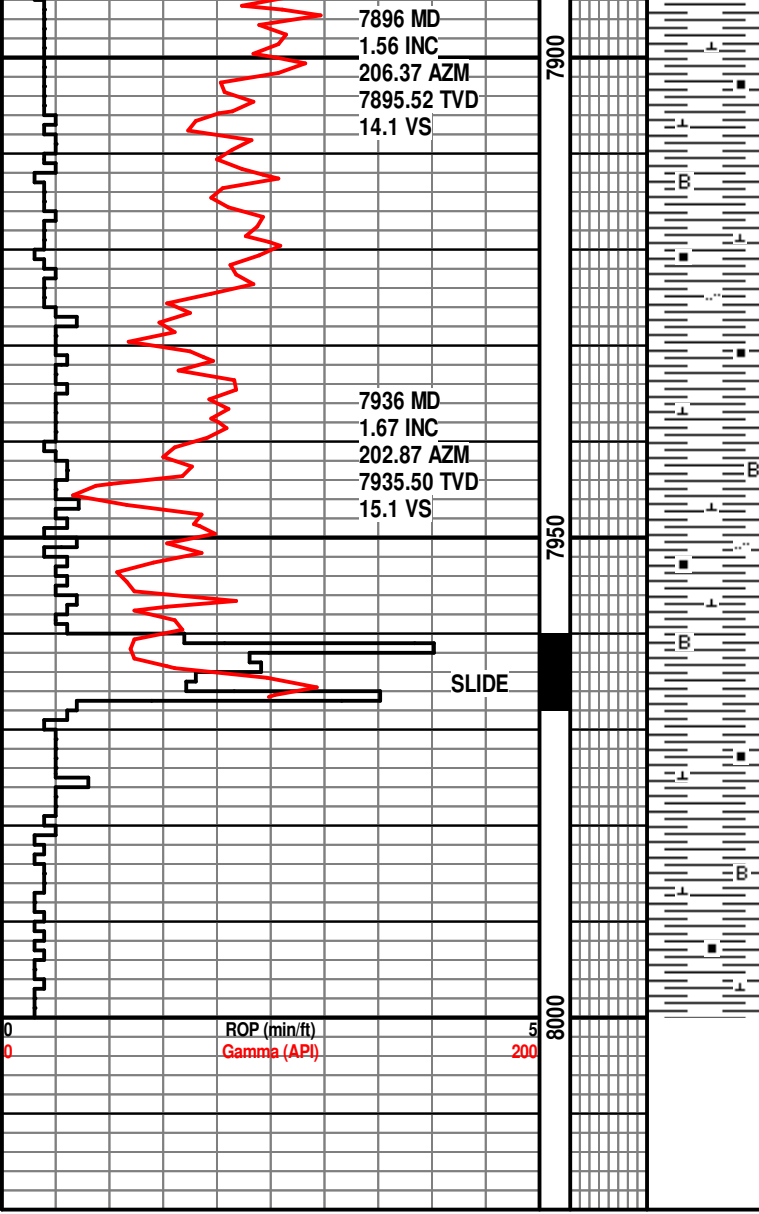
LS- TAN-LT GY, CRM, MICXL,
DNS, TR CARB LAM, TR PYR,
SFT-FRM, W/ SME SH.

SMPL TOP CARLISLE
AT 7841'.

SH- DK GY-BLK, BLKY-PLTY,
SBWXY, CARB, V CALC-LMY,
SFT-FRM. W/ TR LS- TAN-LT
GY, CRM, MICXL.

SH- DK GY-BLK, BLKY-PLTY,
SBWXY, SME CARB, SITY IN





SBWXY, SMC CARB, SFT FRM,
PTS, V CALC, MOD FRM-FRM,
TR BENT-CRM.

SH- DK GY-BLK, BLKY, SBWXY,
SLTY IN PT, CARB, CALC,
SFT-FRM. W/ TR BENT- LT
GY-CRM.

SH- DK GY, GY, BLKY-PLTY,
SBWXY, CARB IN PT, SL SLTY,
V CALC, SFT-FRM. W/ BENT- LT
GY-BRN, GN.

TD PILOT HOLE AT
8200' ON 7/9/2014 AT
9:15 AM.
DRILLERS DEPTH.

