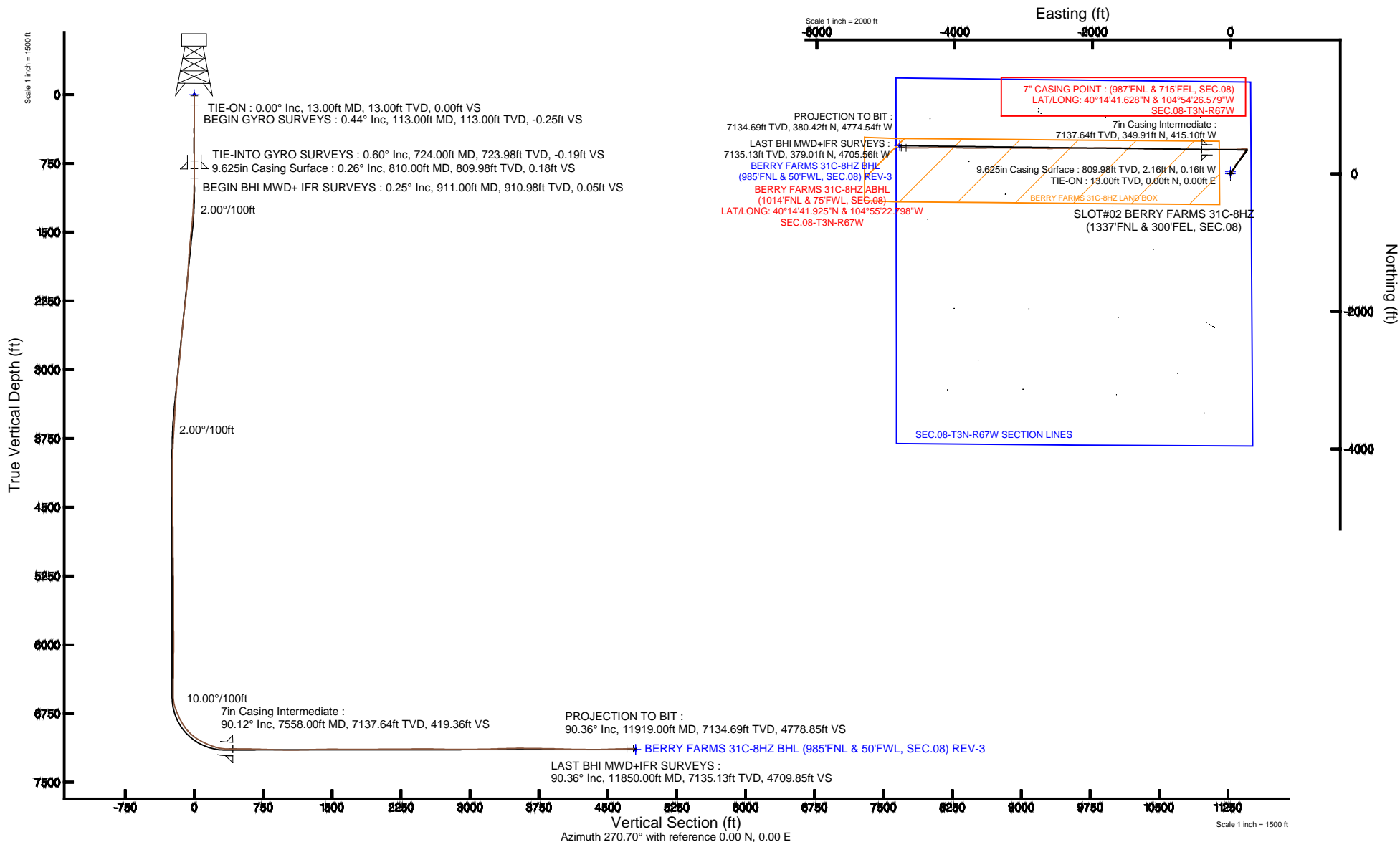


KERR-MCGEE OIL & GAS ONSHORE LP

Location: COLORADO Slot: SLOT#02 BERRY FARMS 31C-8HZ (1337'FNL & 300'FEL, SEC.08)
 Field: WELD COUNTY (KERR MCGEE) Well: BERRY FARMS 31C-8HZ
 Facility: SEC.08-T3N-R67W Wellbore: BERRY FARMS 31C-8HZ PWB

Plot reference wellpath is BERRY FARMS 31C-8HZ (REV-B.0) PWP

| | |
|--|--|
| True vertical depths are referenced to ENSIGN 145 (13'KB) (RKB) | Grid System: NAD83 / Lambert Colorado SP, Northern Zone (501), US feet |
| Measured depths are referenced to ENSIGN 145 (13'KB) (RKB) | North Reference: True north |
| ENSIGN 145 (13'KB) (RKB) to Mean Sea Level: 4833 feet | Scale: True distance |
| Mean Sea Level to Mud line (At Slot: SLOT#02 BERRY FARMS 31C-8HZ (1337'FNL & 300'FEL, SEC.08)): 0 feet | Depths are in feet |
| Coordinates are in feet referenced to Slot | Created by: ingmjmr on 7/8/2014 |



Actual Wellpath Report

BERRY FARMS 31C-8HZ AWP

Page 1 of 8

REFERENCE WELLPATH IDENTIFICATION

| | | | |
|----------|---------------------------------|----------|--|
| Operator | KERR-MCGEE OIL & GAS ONSHORE LP | Slot | SLOT#02 BERRY FARMS 31C-8HZ (1337'FNL & 300'FEL, SEC.08) |
| Area | COLORADO | Well | BERRY FARMS 31C-8HZ |
| Field | WELD COUNTY (KERR MCGEE) | Wellbore | BERRY FARMS 31C-8HZ AWB |
| Facility | SEC.08-T3N-R67W | | |

REPORT SETUP INFORMATION

| | | | |
|---------------------|---|----------------------|--|
| Projection System | NAD83 / Lambert Colorado SP, Northern Zone (501), US feet | Software System | WellArchitect® 4.0.0 |
| North Reference | True | User | Ingmjmr |
| Scale | 0.999957 | Report Generated | 7/8/2014 at 1:22:59 PM |
| Convergence at slot | n/a | Database/Source file | Anadarko Local/BERRY_FARMS_31C-8HZ_AWB.xml |

WELLPATH LOCATION

| | Local coordinates | | Grid coordinates | | Geographic coordinates | |
|-----------------------|-------------------|----------|------------------|-----------------|------------------------|-----------------|
| | North[ft] | East[ft] | Easting[US ft] | Northing[US ft] | Latitude | Longitude |
| Slot Location | -29.85 | -0.23 | 3165843.75 | 1332263.26 | 40°14'38.170"N | 104°54'21.226"W |
| Facility Reference Pt | | | 3165843.78 | 1332293.12 | 40°14'38.465"N | 104°54'21.223"W |
| Field Reference Pt | | | 3197771.84 | 1268891.29 | 40°04'09.600"N | 104°47'36.000"W |

WELLPATH DATUM

| | | | |
|--------------------------|--------------------------|---|-------------------|
| Calculation method | Minimum curvature | ENSIGN 145 (13'KB) (RKB) to Facility Vertical Datum | 4833.00ft |
| Horizontal Reference Pt | Slot | ENSIGN 145 (13'KB) (RKB) to Mean Sea Level | 4833.00ft |
| Vertical Reference Pt | ENSIGN 145 (13'KB) (RKB) | ENSIGN 145 (13'KB) (RKB) to Mud Line at Slot (SLOT#02 BERRY FARMS 31C-8HZ (1337'FNL & 300'FEL, SEC.08)) | 4833.00ft |
| MD Reference Pt | ENSIGN 145 (13'KB) (RKB) | Section Origin | N 0.00, E 0.00 ft |
| Field Vertical Reference | Mean Sea Level | Section Azimuth | 270.70° |

REFERENCE WELLPATH IDENTIFICATION

| | | | |
|----------|---------------------------------|----------|--|
| Operator | KERR-MCGEE OIL & GAS ONSHORE LP | Slot | SLOT#02 BERRY FARMS 31C-8HZ (1337'FNL & 300'FEL, SEC.08) |
| Area | COLORADO | Well | BERRY FARMS 31C-8HZ |
| Field | WELD COUNTY (KERR MCGEE) | Wellbore | BERRY FARMS 31C-8HZ AWP |
| Facility | SEC.08-T3N-R67W | | |

WELLPATH DATA (131 stations) † = interpolated/extrapolated station

| MD [ft] | Inclination [°] | Azimuth [°] | TVD [ft] | Vert Sect [ft] | North [ft] | East [ft] | Latitude | Longitude | DLS [°/100ft] | Comments |
|---------|-----------------|-------------|----------|----------------|------------|-----------|----------------|-----------------|---------------|----------------------------|
| 0.00† | 0.000 | 42.000 | 0.00 | 0.00 | 0.00 | 0.00 | 40°14'38.170"N | 104°54'21.226"W | 0.00 | |
| 13.00 | 0.000 | 42.000 | 13.00 | 0.00 | 0.00 | 0.00 | 40°14'38.170"N | 104°54'21.226"W | 0.00 | TIE-ON |
| 113.00 | 0.440 | 42.000 | 113.00 | -0.25 | 0.29 | 0.26 | 40°14'38.173"N | 104°54'21.223"W | 0.44 | BEGIN GYRO SURVEYS |
| 213.00 | 0.360 | 243.200 | 213.00 | -0.23 | 0.43 | 0.23 | 40°14'38.174"N | 104°54'21.223"W | 0.79 | |
| 313.00 | 0.560 | 73.900 | 313.00 | -0.42 | 0.42 | 0.42 | 40°14'38.174"N | 104°54'21.221"W | 0.92 | |
| 413.00 | 0.750 | 348.420 | 412.99 | -0.75 | 1.20 | 0.76 | 40°14'38.182"N | 104°54'21.216"W | 0.90 | |
| 513.00 | 0.510 | 112.150 | 512.99 | -1.02 | 1.67 | 1.04 | 40°14'38.187"N | 104°54'21.213"W | 1.12 | |
| 613.00 | 0.570 | 248.020 | 612.99 | -0.98 | 1.32 | 0.99 | 40°14'38.183"N | 104°54'21.213"W | 1.00 | |
| 713.00 | 0.560 | 328.350 | 712.98 | -0.26 | 1.55 | 0.27 | 40°14'38.185"N | 104°54'21.222"W | 0.73 | |
| 724.00 | 0.600 | 319.370 | 723.98 | -0.19 | 1.64 | 0.21 | 40°14'38.186"N | 104°54'21.223"W | 0.90 | TIE-INTO GYRO SURVEYS |
| 911.00 | 0.250 | 92.490 | 910.98 | 0.05 | 2.36 | -0.02 | 40°14'38.193"N | 104°54'21.226"W | 0.42 | BEGIN BHI MWD+ IFR SURVEYS |
| 1001.00 | 1.480 | 57.490 | 1000.97 | -1.12 | 2.98 | 1.16 | 40°14'38.199"N | 104°54'21.211"W | 1.43 | |
| 1102.00 | 3.190 | 46.010 | 1101.88 | -4.21 | 5.63 | 4.28 | 40°14'38.226"N | 104°54'21.171"W | 1.75 | |
| 1196.00 | 4.820 | 36.780 | 1195.65 | -8.39 | 10.61 | 8.52 | 40°14'38.275"N | 104°54'21.116"W | 1.86 | |
| 1294.00 | 6.300 | 38.770 | 1293.19 | -14.13 | 18.10 | 14.36 | 40°14'38.349"N | 104°54'21.041"W | 1.52 | |
| 1387.00 | 8.280 | 45.330 | 1385.43 | -21.98 | 26.79 | 22.32 | 40°14'38.435"N | 104°54'20.938"W | 2.31 | |
| 1574.00 | 9.970 | 33.320 | 1570.07 | -40.17 | 49.79 | 40.79 | 40°14'38.662"N | 104°54'20.700"W | 1.36 | |
| 1668.00 | 11.330 | 29.030 | 1662.45 | -48.94 | 64.66 | 49.74 | 40°14'38.809"N | 104°54'20.585"W | 1.67 | |
| 1761.00 | 10.360 | 24.630 | 1753.79 | -56.67 | 80.25 | 57.66 | 40°14'38.963"N | 104°54'20.482"W | 1.37 | |
| 1855.00 | 9.720 | 17.990 | 1846.36 | -62.45 | 95.48 | 63.63 | 40°14'39.114"N | 104°54'20.405"W | 1.41 | |
| 1948.00 | 10.310 | 22.210 | 1937.94 | -67.84 | 110.65 | 69.20 | 40°14'39.263"N | 104°54'20.334"W | 1.01 | |
| 2042.00 | 9.530 | 28.580 | 2030.54 | -74.56 | 125.28 | 76.10 | 40°14'39.408"N | 104°54'20.245"W | 1.43 | |
| 2135.00 | 9.220 | 34.850 | 2122.30 | -82.34 | 138.15 | 84.04 | 40°14'39.535"N | 104°54'20.142"W | 1.15 | |
| 2228.00 | 8.860 | 44.500 | 2214.15 | -91.48 | 149.37 | 93.32 | 40°14'39.646"N | 104°54'20.023"W | 1.67 | |
| 2322.00 | 10.660 | 41.810 | 2306.78 | -102.21 | 161.02 | 104.19 | 40°14'39.761"N | 104°54'19.882"W | 1.97 | |
| 2415.00 | 10.590 | 37.070 | 2398.19 | -112.93 | 174.25 | 115.08 | 40°14'39.892"N | 104°54'19.742"W | 0.94 | |
| 2509.00 | 10.320 | 34.810 | 2490.63 | -122.77 | 188.05 | 125.09 | 40°14'40.028"N | 104°54'19.613"W | 0.52 | |
| 2603.00 | 10.160 | 32.250 | 2583.13 | -131.83 | 201.98 | 134.32 | 40°14'40.166"N | 104°54'19.494"W | 0.51 | |
| 2692.00 | 9.560 | 32.350 | 2670.82 | -139.82 | 214.86 | 142.47 | 40°14'40.293"N | 104°54'19.389"W | 0.67 | |
| 2782.00 | 9.410 | 31.830 | 2759.59 | -147.54 | 227.43 | 150.34 | 40°14'40.417"N | 104°54'19.287"W | 0.19 | |

REFERENCE WELLPATH IDENTIFICATION

| | | | |
|----------|---------------------------------|----------|--|
| Operator | KERR-MCGEE OIL & GAS ONSHORE LP | Slot | SLOT#02 BERRY FARMS 31C-8HZ (1337'FNL & 300'FEL, SEC.08) |
| Area | COLORADO | Well | BERRY FARMS 31C-8HZ |
| Field | WELD COUNTY (KERR MCGEE) | Wellbore | BERRY FARMS 31C-8HZ AWB |
| Facility | SEC.08-T3N-R67W | | |

WELLPATH DATA (131 stations)

| MD [ft] | Inclination [°] | Azimuth [°] | TVD [ft] | Vert Sect [ft] | North [ft] | East [ft] | Latitude | Longitude | DLS [°/100ft] | Comments |
|------------|--------------------|----------------|-------------|-------------------|---------------|--------------|----------------|-----------------|------------------|----------|
| 2873.00 | 10.110 | 34.830 | 2849.27 | -155.87 | 240.30 | 158.83 | 40°14'40.545"N | 104°54'19.178"W | 0.95 | |
| 2963.00 | 11.080 | 37.170 | 2937.74 | -165.44 | 253.68 | 168.57 | 40°14'40.677"N | 104°54'19.052"W | 1.18 | |
| 3053.00 | 10.980 | 34.630 | 3026.07 | -175.37 | 267.62 | 178.66 | 40°14'40.815"N | 104°54'18.922"W | 0.55 | |
| 3143.00 | 10.130 | 32.660 | 3114.55 | -184.34 | 281.34 | 187.80 | 40°14'40.950"N | 104°54'18.804"W | 1.03 | |
| 3233.00 | 9.270 | 30.770 | 3203.26 | -192.16 | 294.23 | 195.78 | 40°14'41.078"N | 104°54'18.701"W | 1.02 | |
| 3323.00 | 8.410 | 30.750 | 3292.19 | -199.09 | 306.12 | 202.86 | 40°14'41.195"N | 104°54'18.610"W | 0.96 | |
| 3413.00 | 7.710 | 30.770 | 3381.30 | -205.41 | 316.96 | 209.31 | 40°14'41.302"N | 104°54'18.527"W | 0.78 | |
| 3503.00 | 6.990 | 29.290 | 3470.56 | -211.05 | 326.92 | 215.08 | 40°14'41.401"N | 104°54'18.452"W | 0.83 | |
| 3593.00 | 6.750 | 29.800 | 3559.92 | -216.24 | 336.29 | 220.39 | 40°14'41.493"N | 104°54'18.384"W | 0.28 | |
| 3683.00 | 5.970 | 39.370 | 3649.37 | -221.74 | 344.50 | 225.99 | 40°14'41.574"N | 104°54'18.312"W | 1.46 | |
| 3773.00 | 5.110 | 40.220 | 3738.95 | -227.22 | 351.18 | 231.54 | 40°14'41.640"N | 104°54'18.240"W | 0.96 | |
| 3863.00 | 4.180 | 33.780 | 3828.65 | -231.56 | 356.96 | 235.95 | 40°14'41.697"N | 104°54'18.183"W | 1.18 | |
| 3953.00 | 2.670 | 29.860 | 3918.49 | -234.37 | 361.51 | 238.82 | 40°14'41.742"N | 104°54'18.146"W | 1.70 | |
| 4043.00 | 1.390 | 33.040 | 4008.43 | -235.97 | 364.24 | 240.46 | 40°14'41.769"N | 104°54'18.125"W | 1.43 | |
| 4133.00 | 0.880 | 35.220 | 4098.41 | -236.95 | 365.72 | 241.45 | 40°14'41.784"N | 104°54'18.112"W | 0.57 | |
| 4223.00 | 0.970 | 338.980 | 4188.40 | -237.06 | 367.00 | 241.58 | 40°14'41.797"N | 104°54'18.111"W | 0.97 | |
| 4313.00 | 0.550 | 256.470 | 4278.39 | -236.36 | 367.61 | 240.89 | 40°14'41.803"N | 104°54'18.120"W | 1.17 | |
| 4493.00 | 0.640 | 222.400 | 4458.38 | -234.85 | 366.66 | 239.37 | 40°14'41.793"N | 104°54'18.139"W | 0.20 | |
| 4853.00 | 0.690 | 224.460 | 4818.36 | -232.02 | 363.63 | 236.49 | 40°14'41.763"N | 104°54'18.176"W | 0.02 | |
| 4943.00 | 0.930 | 201.600 | 4908.35 | -231.38 | 362.56 | 235.85 | 40°14'41.753"N | 104°54'18.185"W | 0.44 | |
| 5033.00 | 0.450 | 290.450 | 4998.35 | -230.79 | 362.01 | 235.25 | 40°14'41.747"N | 104°54'18.192"W | 1.14 | |
| 5393.00 | 1.120 | 250.510 | 5358.31 | -226.15 | 361.33 | 230.60 | 40°14'41.741"N | 104°54'18.252"W | 0.23 | |
| 5483.00 | 0.370 | 31.480 | 5448.31 | -225.48 | 361.28 | 229.93 | 40°14'41.740"N | 104°54'18.261"W | 1.59 | |
| 5842.00 | 0.770 | 352.360 | 5807.29 | -225.72 | 364.66 | 230.21 | 40°14'41.774"N | 104°54'18.257"W | 0.15 | |
| 5932.00 | 0.990 | 282.980 | 5897.28 | -224.87 | 365.44 | 229.37 | 40°14'41.781"N | 104°54'18.268"W | 1.13 | |
| 6022.00 | 0.760 | 135.410 | 5987.28 | -224.54 | 365.19 | 229.04 | 40°14'41.779"N | 104°54'18.272"W | 1.87 | |
| 6382.00 | 0.520 | 73.160 | 6347.26 | -227.79 | 363.96 | 232.27 | 40°14'41.767"N | 104°54'18.231"W | 0.19 | |
| 6538.00 | 0.440 | 82.060 | 6503.25 | -229.06 | 364.25 | 233.55 | 40°14'41.769"N | 104°54'18.214"W | 0.07 | |
| 6562.00 | 0.530 | 87.550 | 6527.25 | -229.26 | 364.26 | 233.75 | 40°14'41.770"N | 104°54'18.212"W | 0.42 | |
| 6607.00 | 1.230 | 286.880 | 6572.25 | -229.00 | 364.41 | 233.49 | 40°14'41.771"N | 104°54'18.215"W | 3.86 | |

REFERENCE WELLPATH IDENTIFICATION

| | | | |
|----------|---------------------------------|----------|--|
| Operator | KERR-MCGEE OIL & GAS ONSHORE LP | Slot | SLOT#02 BERRY FARMS 31C-8HZ (1337'FNL & 300'FEL, SEC.08) |
| Area | COLORADO | Well | BERRY FARMS 31C-8HZ |
| Field | WELD COUNTY (KERR MCGEE) | Wellbore | BERRY FARMS 31C-8HZ AWP |
| Facility | SEC.08-T3N-R67W | | |

WELLPATH DATA (131 stations) † = interpolated/extrapolated station

| MD [ft] | Inclination [°] | Azimuth [°] | TVD [ft] | Vert Sect [ft] | North [ft] | East [ft] | Latitude | Longitude | DLS [°/100ft] | Comments |
|------------|--------------------|----------------|-------------|-------------------|---------------|--------------|----------------|-----------------|------------------|-----------------|
| 6652.00 | 8.110 | 274.300 | 6617.07 | -225.37 | 364.79 | 229.86 | 40°14'41.775"N | 104°54'18.262"W | 15.37 | |
| 6697.00 | 16.590 | 270.920 | 6660.99 | -215.76 | 365.13 | 220.26 | 40°14'41.778"N | 104°54'18.386"W | 18.90 | |
| 6742.00 | 20.300 | 265.050 | 6703.68 | -201.56 | 364.56 | 206.05 | 40°14'41.773"N | 104°54'18.569"W | 9.21 | |
| 6787.00 | 22.350 | 262.430 | 6745.60 | -185.32 | 362.76 | 189.79 | 40°14'41.755"N | 104°54'18.779"W | 5.02 | |
| 6832.00 | 25.370 | 263.660 | 6786.75 | -167.28 | 360.57 | 171.72 | 40°14'41.733"N | 104°54'19.012"W | 6.80 | |
| 6877.00 | 28.460 | 265.970 | 6826.87 | -147.03 | 358.75 | 151.44 | 40°14'41.715"N | 104°54'19.273"W | 7.25 | |
| 6922.00 | 30.920 | 267.370 | 6865.96 | -124.79 | 357.47 | 129.19 | 40°14'41.702"N | 104°54'19.560"W | 5.68 | |
| 6967.00 | 37.220 | 267.470 | 6903.21 | -99.64 | 356.33 | 104.02 | 40°14'41.691"N | 104°54'19.885"W | 14.00 | |
| 7012.00 | 41.120 | 268.740 | 6938.10 | -71.25 | 355.41 | 75.62 | 40°14'41.682"N | 104°54'20.251"W | 8.85 | |
| 7057.00 | 46.670 | 269.690 | 6970.51 | -40.07 | 354.99 | 44.43 | 40°14'41.678"N | 104°54'20.653"W | 12.42 | |
| 7102.00 | 52.560 | 269.720 | 6999.65 | -5.82 | 354.82 | 10.17 | 40°14'41.676"N | 104°54'21.095"W | 13.09 | |
| 7147.00 | 57.600 | 269.280 | 7025.41 | 31.06 | 354.49 | -26.71 | 40°14'41.673"N | 104°54'21.570"W | 11.23 | |
| 7192.00 | 60.980 | 269.280 | 7048.38 | 69.73 | 354.00 | -65.39 | 40°14'41.668"N | 104°54'22.069"W | 7.51 | |
| 7237.00 | 63.900 | 269.350 | 7069.20 | 109.61 | 353.53 | -105.28 | 40°14'41.664"N | 104°54'22.584"W | 6.49 | |
| 7282.00 | 66.810 | 268.380 | 7087.96 | 150.48 | 352.71 | -146.17 | 40°14'41.655"N | 104°54'23.111"W | 6.76 | |
| 7327.00 | 70.620 | 268.130 | 7104.30 | 192.37 | 351.44 | -188.07 | 40°14'41.643"N | 104°54'23.651"W | 8.48 | |
| 7372.00 | 73.640 | 268.980 | 7118.10 | 235.16 | 350.36 | -230.88 | 40°14'41.632"N | 104°54'24.203"W | 6.95 | |
| 7417.00 | 79.250 | 268.870 | 7128.65 | 278.87 | 349.54 | -274.60 | 40°14'41.624"N | 104°54'24.767"W | 12.47 | |
| 7462.00 | 85.590 | 269.780 | 7134.58 | 323.44 | 349.02 | -319.18 | 40°14'41.619"N | 104°54'25.342"W | 14.23 | |
| 7502.00 | 88.120 | 270.290 | 7136.77 | 363.37 | 349.04 | -359.12 | 40°14'41.619"N | 104°54'25.857"W | 6.45 | |
| 7558.00† | 90.117 | 271.483 | 7137.64 | 419.36 | 349.91 | -415.10 | 40°14'41.628"N | 104°54'26.579"W | 4.15 | 7" CASING POINT |
| 7571.00 | 90.580 | 271.760 | 7137.56 | 432.36 | 350.27 | -428.10 | 40°14'41.631"N | 104°54'26.747"W | 4.15 | |
| 7661.00 | 90.460 | 269.980 | 7136.74 | 522.35 | 351.64 | -518.08 | 40°14'41.645"N | 104°54'27.907"W | 1.98 | |
| 7751.00 | 88.910 | 269.530 | 7137.23 | 612.34 | 351.26 | -608.07 | 40°14'41.641"N | 104°54'29.068"W | 1.79 | |
| 7841.00 | 88.150 | 270.360 | 7139.54 | 702.30 | 351.17 | -698.04 | 40°14'41.640"N | 104°54'30.228"W | 1.25 | |
| 7931.00 | 87.930 | 270.570 | 7142.62 | 792.24 | 351.90 | -787.99 | 40°14'41.647"N | 104°54'31.388"W | 0.34 | |
| 8021.00 | 88.150 | 271.270 | 7145.70 | 882.19 | 353.34 | -877.92 | 40°14'41.662"N | 104°54'32.548"W | 0.81 | |
| 8111.00 | 89.100 | 271.690 | 7147.86 | 972.16 | 355.67 | -967.86 | 40°14'41.684"N | 104°54'33.707"W | 1.15 | |
| 8201.00 | 90.400 | 272.410 | 7148.25 | 1062.13 | 358.89 | -1057.80 | 40°14'41.716"N | 104°54'34.867"W | 1.65 | |
| 8291.00 | 90.460 | 272.280 | 7147.58 | 1152.09 | 362.57 | -1147.73 | 40°14'41.753"N | 104°54'36.027"W | 0.16 | |

Actual Wellpath Report

BERRY FARMS 31C-8HZ AWP

Page 5 of 8

REFERENCE WELLPATH IDENTIFICATION

| | | | |
|----------|---------------------------------|----------|--|
| Operator | KERR-MCGEE OIL & GAS ONSHORE LP | Slot | SLOT#02 BERRY FARMS 31C-8HZ (1337'FNL & 300'FEL, SEC.08) |
| Area | COLORADO | Well | BERRY FARMS 31C-8HZ |
| Field | WELD COUNTY (KERR MCGEE) | Wellbore | BERRY FARMS 31C-8HZ AWP |
| Facility | SEC.08-T3N-R67W | | |

WELLPATH DATA (131 stations)

| MD [ft] | Inclination [°] | Azimuth [°] | TVD [ft] | Vert Sect [ft] | North [ft] | East [ft] | Latitude | Longitude | DLS [°/100ft] | Comments |
|------------|--------------------|----------------|-------------|-------------------|---------------|--------------|----------------|-----------------|------------------|----------|
| 8381.00 | 92.340 | 271.810 | 7145.38 | 1242.03 | 365.78 | -1237.64 | 40°14'41.784"N | 104°54'37.186"W | 2.15 | |
| 8471.00 | 91.560 | 271.920 | 7142.32 | 1331.96 | 368.71 | -1327.54 | 40°14'41.813"N | 104°54'38.346"W | 0.88 | |
| 8561.00 | 90.920 | 271.990 | 7140.37 | 1421.92 | 371.78 | -1417.46 | 40°14'41.843"N | 104°54'39.505"W | 0.72 | |
| 8651.00 | 89.810 | 271.280 | 7139.79 | 1511.90 | 374.34 | -1507.42 | 40°14'41.869"N | 104°54'40.665"W | 1.46 | |
| 8741.00 | 89.470 | 271.050 | 7140.36 | 1601.90 | 376.17 | -1597.40 | 40°14'41.887"N | 104°54'41.826"W | 0.46 | |
| 8831.00 | 88.980 | 270.820 | 7141.58 | 1691.89 | 377.64 | -1687.38 | 40°14'41.901"N | 104°54'42.986"W | 0.60 | |
| 8921.00 | 90.490 | 269.530 | 7141.99 | 1781.88 | 377.92 | -1777.37 | 40°14'41.904"N | 104°54'44.147"W | 2.21 | |
| 9011.00 | 90.240 | 269.180 | 7141.42 | 1871.85 | 376.90 | -1867.37 | 40°14'41.894"N | 104°54'45.307"W | 0.48 | |
| 9101.00 | 90.860 | 269.590 | 7140.56 | 1961.82 | 375.94 | -1957.36 | 40°14'41.884"N | 104°54'46.468"W | 0.83 | |
| 9191.00 | 90.360 | 269.710 | 7139.60 | 2051.80 | 375.39 | -2047.35 | 40°14'41.879"N | 104°54'47.628"W | 0.57 | |
| 9281.00 | 89.750 | 269.220 | 7139.51 | 2141.78 | 374.55 | -2137.35 | 40°14'41.870"N | 104°54'48.789"W | 0.87 | |
| 9371.00 | 90.460 | 269.460 | 7139.35 | 2231.75 | 373.51 | -2227.34 | 40°14'41.860"N | 104°54'49.949"W | 0.83 | |
| 9461.00 | 90.830 | 269.530 | 7138.33 | 2321.73 | 372.72 | -2317.33 | 40°14'41.852"N | 104°54'51.110"W | 0.42 | |
| 9550.00 | 90.760 | 269.150 | 7137.10 | 2410.69 | 371.69 | -2406.31 | 40°14'41.842"N | 104°54'52.257"W | 0.43 | |
| 9640.00 | 89.930 | 268.850 | 7136.56 | 2500.65 | 370.12 | -2496.30 | 40°14'41.826"N | 104°54'53.418"W | 0.98 | |
| 9730.00 | 89.100 | 269.900 | 7137.32 | 2590.62 | 369.14 | -2586.29 | 40°14'41.816"N | 104°54'54.578"W | 1.49 | |
| 9820.00 | 88.610 | 270.210 | 7139.12 | 2680.60 | 369.23 | -2676.27 | 40°14'41.817"N | 104°54'55.739"W | 0.64 | |
| 9910.00 | 89.410 | 270.650 | 7140.67 | 2770.58 | 369.90 | -2766.25 | 40°14'41.824"N | 104°54'56.899"W | 1.01 | |
| 10000.00 | 89.960 | 271.670 | 7141.17 | 2860.58 | 371.73 | -2856.23 | 40°14'41.842"N | 104°54'58.059"W | 1.29 | |
| 10090.00 | 89.690 | 270.330 | 7141.44 | 2950.57 | 373.30 | -2946.22 | 40°14'41.857"N | 104°54'59.220"W | 1.52 | |
| 10180.00 | 91.070 | 270.650 | 7140.85 | 3040.57 | 374.07 | -3036.21 | 40°14'41.865"N | 104°55'00.380"W | 1.57 | |
| 10270.00 | 90.150 | 270.590 | 7139.89 | 3130.56 | 375.04 | -3126.20 | 40°14'41.874"N | 104°55'01.541"W | 1.02 | |
| 10360.00 | 92.340 | 270.700 | 7137.93 | 3220.54 | 376.05 | -3216.16 | 40°14'41.884"N | 104°55'02.701"W | 2.44 | |
| 10450.00 | 91.540 | 270.260 | 7134.89 | 3310.48 | 376.81 | -3306.11 | 40°14'41.891"N | 104°55'03.861"W | 1.01 | |
| 10540.00 | 91.380 | 270.040 | 7132.59 | 3400.45 | 377.04 | -3396.08 | 40°14'41.894"N | 104°55'05.021"W | 0.30 | |
| 10630.00 | 91.260 | 269.610 | 7130.52 | 3490.41 | 376.77 | -3486.05 | 40°14'41.891"N | 104°55'06.182"W | 0.50 | |
| 10720.00 | 89.410 | 268.020 | 7129.99 | 3580.36 | 374.90 | -3576.03 | 40°14'41.872"N | 104°55'07.342"W | 2.71 | |
| 10810.00 | 89.470 | 269.450 | 7130.87 | 3670.30 | 372.92 | -3666.00 | 40°14'41.852"N | 104°55'08.502"W | 1.59 | |
| 10900.00 | 88.860 | 270.960 | 7132.18 | 3760.28 | 373.24 | -3755.98 | 40°14'41.856"N | 104°55'09.663"W | 1.81 | |
| 10990.00 | 88.950 | 271.510 | 7133.90 | 3850.26 | 375.18 | -3845.95 | 40°14'41.875"N | 104°55'10.823"W | 0.62 | |

Actual Wellpath Report

BERRY FARMS 31C-8HZ AWP

Page 6 of 8

REFERENCE WELLPATH IDENTIFICATION

| | | | |
|----------|---------------------------------|----------|--|
| Operator | KERR-MCGEE OIL & GAS ONSHORE LP | Slot | SLOT#02 BERRY FARMS 31C-8HZ (1337'FNL & 300'FEL, SEC.08) |
| Area | COLORADO | Well | BERRY FARMS 31C-8HZ |
| Field | WELD COUNTY (KERR MCGEE) | Wellbore | BERRY FARMS 31C-8HZ AWB |
| Facility | SEC.08-T3N-R67W | | |

WELLPATH DATA (131 stations)

| MD [ft] | Inclination [°] | Azimuth [°] | TVD [ft] | Vert Sect [ft] | North [ft] | East [ft] | Latitude | Longitude | DLS [°/100ft] | Comments |
|----------|-----------------|-------------|----------|----------------|------------|-----------|----------------|-----------------|---------------|--------------------------|
| 11080.00 | 88.830 | 271.760 | 7135.65 | 3940.23 | 377.75 | -3935.89 | 40°14'41.900"N | 104°55'11.983"W | 0.31 | |
| 11170.00 | 88.210 | 271.490 | 7137.97 | 4030.19 | 380.30 | -4025.83 | 40°14'41.925"N | 104°55'13.142"W | 0.75 | |
| 11260.00 | 88.670 | 270.440 | 7140.42 | 4120.15 | 381.81 | -4115.78 | 40°14'41.940"N | 104°55'14.302"W | 1.27 | |
| 11350.00 | 89.250 | 269.720 | 7142.06 | 4210.13 | 381.94 | -4205.76 | 40°14'41.941"N | 104°55'15.463"W | 1.03 | |
| 11440.00 | 89.530 | 269.130 | 7143.01 | 4300.10 | 381.04 | -4295.75 | 40°14'41.932"N | 104°55'16.623"W | 0.73 | |
| 11530.00 | 90.300 | 268.280 | 7143.15 | 4390.05 | 379.00 | -4385.73 | 40°14'41.911"N | 104°55'17.784"W | 1.27 | |
| 11620.00 | 92.090 | 269.120 | 7141.27 | 4479.97 | 376.96 | -4475.68 | 40°14'41.891"N | 104°55'18.944"W | 2.20 | |
| 11710.00 | 91.910 | 270.160 | 7138.13 | 4569.90 | 376.40 | -4565.62 | 40°14'41.885"N | 104°55'20.104"W | 1.17 | |
| 11800.00 | 91.100 | 271.620 | 7135.77 | 4659.86 | 377.79 | -4655.58 | 40°14'41.899"N | 104°55'21.264"W | 1.85 | |
| 11850.00 | 90.360 | 271.170 | 7135.13 | 4709.85 | 379.01 | -4705.56 | 40°14'41.911"N | 104°55'21.908"W | 1.73 | LAST BHI MWD+IFR SURVEYS |
| 11919.00 | 90.360 | 271.170 | 7134.69 | 4778.85 | 380.42 | -4774.54 | 40°14'41.925"N | 104°55'22.798"W | 0.00 | PROJECTION TO BIT |

HOLE & CASING SECTIONS - Ref Wellbore: BERRY FARMS 31C-8HZ AWB Ref Wellpath: BERRY FARMS 31C-8HZ AWP

| String/Diameter | Start MD [ft] | End MD [ft] | Interval [ft] | Start TVD [ft] | End TVD [ft] | Start N/S [ft] | Start E/W [ft] | End N/S [ft] | End E/W [ft] |
|-------------------------|---------------|-------------|---------------|----------------|--------------|----------------|----------------|--------------|--------------|
| 13.5in Open Hole | 13.00 | 810.00 | 797.00 | 13.00 | 809.98 | 0.00 | 0.00 | 2.16 | -0.16 |
| 9.625in Casing Surface | 13.00 | 810.00 | 797.00 | 13.00 | 809.98 | 0.00 | 0.00 | 2.16 | -0.16 |
| 8.75in Open Hole | 810.00 | 7563.00 | 6753.00 | 809.98 | 7137.62 | 2.16 | -0.16 | 350.04 | -420.10 |
| 7in Casing Intermediate | 13.00 | 7558.00 | 7545.00 | 13.00 | 7137.64 | 0.00 | 0.00 | 349.91 | -415.10 |
| 6.125in Open Hole | 7563.00 | 11919.00 | 4356.00 | 7137.62 | 7134.69 | 350.04 | -420.10 | 380.42 | -4774.54 |

Actual Wellpath Report

BERRY FARMS 31C-8HZ AWP

Page 7 of 8

REFERENCE WELLPATH IDENTIFICATION

| | | | |
|----------|---------------------------------|----------|--|
| Operator | KERR-MCGEE OIL & GAS ONSHORE LP | Slot | SLOT#02 BERRY FARMS 31C-8HZ (1337'FNL & 300'FEL, SEC.08) |
| Area | COLORADO | Well | BERRY FARMS 31C-8HZ |
| Field | WELD COUNTY (KERR MCGEE) | Wellbore | BERRY FARMS 31C-8HZ AWB |
| Facility | SEC.08-T3N-R67W | | |

TARGETS

| Name | MD [ft] | TVD [ft] | North [ft] | East [ft] | Grid East [US ft] | Grid North [US ft] | Latitude | Longitude | Shape |
|---|------------|-------------|---------------|--------------|----------------------|-----------------------|----------------|-----------------|---------|
| SEC.08-T3N-R67W SECTION LINES | | 0.00 | 29.85 | 0.31 | 3165843.86 | 1332293.12 | 40°14'38.465"N | 104°54'21.222"W | polygon |
| BERRY FARMS 31C-8HZ BHL (935'FNL & 50'FWL, SEC.08) REV-2 | | 7143.00 | 459.26 | -4799.57 | 3161041.42 | 1332690.34 | 40°14'42.704"N | 104°55'23.121"W | point |
| BERRY FARMS 31C-8HZ BHL (985'FNL & 50'FWL, SEC.08) REV-3 | | 7143.00 | 409.26 | -4799.57 | 3161041.76 | 1332640.34 | 40°14'42.210"N | 104°55'23.121"W | point |
| BERRY FARMS 31C-8HZ BHL ON PLAT (1035'FNL & 50'FWL, SEC.08) REV-1 | | 7143.00 | 359.26 | -4799.57 | 3161042.10 | 1332590.35 | 40°14'41.716"N | 104°55'23.120"W | point |
| BERRY FARMS 31C-8HZ LAND BOX | | 7143.00 | 0.00 | 0.00 | 3165843.75 | 1332263.26 | 40°14'38.170"N | 104°54'21.226"W | polygon |

WELLPATH COMPOSITION - Ref Wellbore: BERRY FARMS 31C-8HZ AWB Ref Wellpath: BERRY FARMS 31C-8HZ AWP

| Start MD [ft] | End MD [ft] | Positional Uncertainty Model | Log Name/Comment | Wellbore |
|------------------|----------------|--------------------------------------|--|-------------------------|
| 13.00 | 724.00 | Generic gyro - continuous (Standard) | MS ENERGY SERVICES GYRO SURVEY <113-724> | BERRY FARMS 31C-8HZ AWB |
| 724.00 | 7502.00 | NaviTrak (IFR) | BHI MWD+IFR SURVEYS <911-7502> | BERRY FARMS 31C-8HZ AWB |
| 7502.00 | 11850.00 | NaviTrak (IFR) | BHI MWD+IFR SURVEYS 6 1/8" HOLE <7571-11850> | BERRY FARMS 31C-8HZ AWB |
| 11850.00 | 11919.00 | Blind Drilling (std) | Projection to bit | BERRY FARMS 31C-8HZ AWB |

Actual Wellpath Report

BERRY FARMS 31C-8HZ AWP

Page 8 of 8

REFERENCE WELLPATH IDENTIFICATION

| | | | |
|----------|---------------------------------|----------|--|
| Operator | KERR-MCGEE OIL & GAS ONSHORE LP | Slot | SLOT#02 BERRY FARMS 31C-8HZ (1337'FNL & 300'FEL, SEC.08) |
| Area | COLORADO | Well | BERRY FARMS 31C-8HZ |
| Field | WELD COUNTY (KERR MCGEE) | Wellbore | BERRY FARMS 31C-8HZ AWP |
| Facility | SEC.08-T3N-R67W | | |

WELLPATH COMMENTS

| MD [ft] | Inclination [°] | Azimuth [°] | TVD [ft] | Comment |
|------------|--------------------|----------------|-------------|----------------------------|
| 13.00 | 0.000 | 42.000 | 13.00 | TIE-ON |
| 113.00 | 0.440 | 42.000 | 113.00 | BEGIN GYRO SURVEYS |
| 724.00 | 0.600 | 319.370 | 723.98 | TIE-INTO GYRO SURVEYS |
| 911.00 | 0.250 | 92.490 | 910.98 | BEGIN BHI MWD+ IFR SURVEYS |
| 7558.00 | 90.117 | 271.483 | 7137.64 | 7" CASING POINT |
| 11850.00 | 90.360 | 271.170 | 7135.13 | LAST BHI MWD+IFR SURVEYS |
| 11919.00 | 90.360 | 271.170 | 7134.69 | PROJECTION TO BIT |