

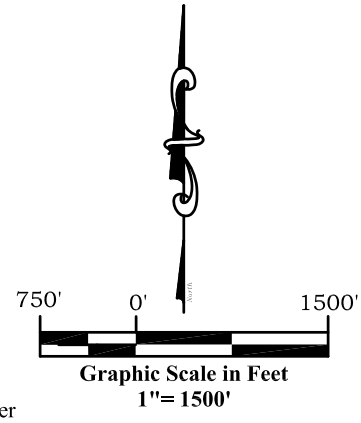
Note:
The measurement for determining any Designated Setback Location shall be made from the center of the Well or Production Facility nearest any Building Unit to the nearest wall or corner of such Building Unit.

Building - 627'
Building Unit - 627'
HOBV - 716'
DOAA - N/A
Public Road - 542'
Above Grnd Util. - 831'
Railroad - 1096+
Property Line - 257'

Current Surface Land Use :
Open Range

Legend

- Field Surveyed Section Corner
- Field Surveyed Quarter Corner
- Calculated Section Corner Location
- Field Surveyed 1/16 Corner



Surface: 21A-18-07-95

1887' FSL
532' FWL
Gnd El= 5083
Pad El= 5083.5
NAD83
Lat: 39.450185562°N
Long: 108.047177375°W

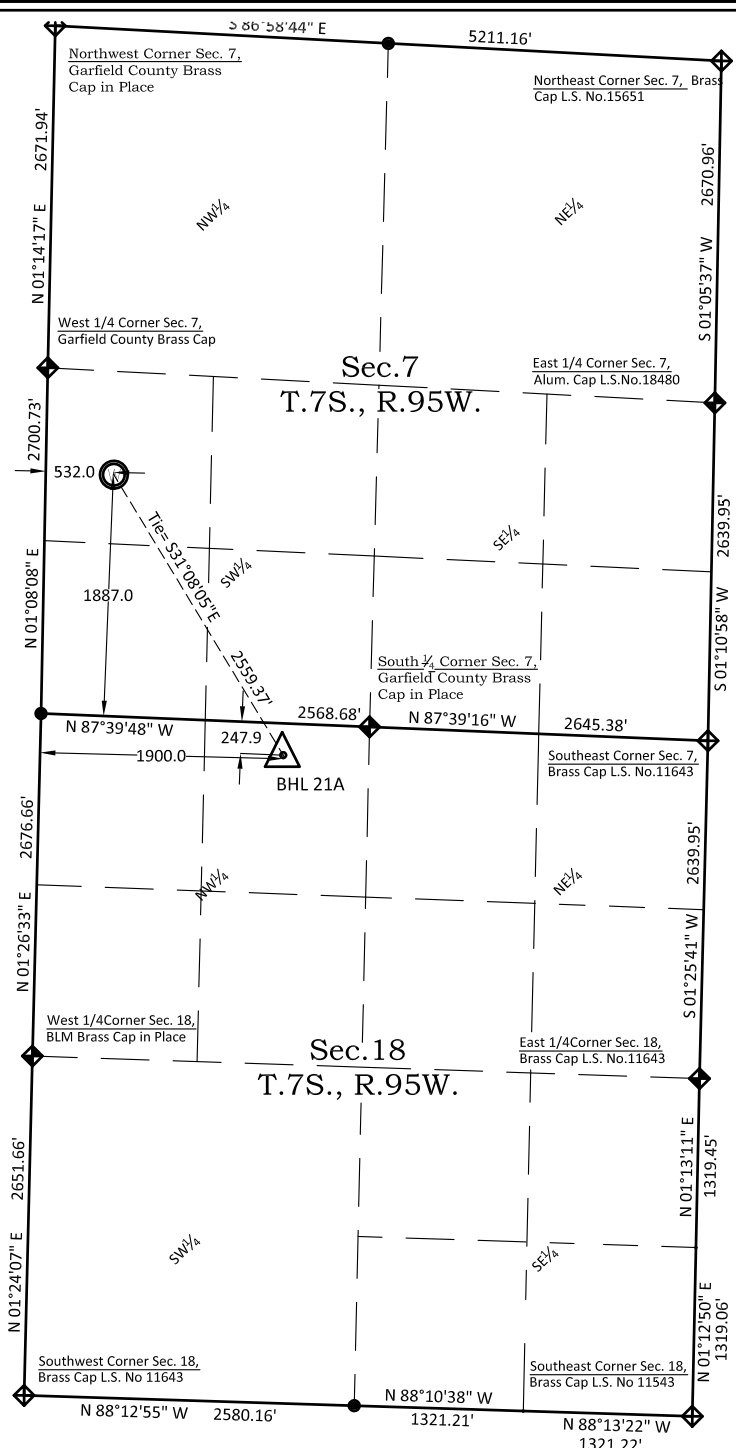
Bottom: 21A-18-07-95

248' FNL
1900' FWL
NAD83
Lat: 39.444300049°N
Long: 108.042234395°W

Notes:

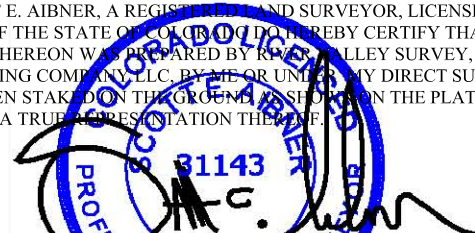
1. LATITUDE AND LONGITUDE COORDINATES ARE DIFFERENTIALLY CORRECTED AND BASED ON PUBLISHED NGS CONTROL STATION "WDP-5". SYSTEM: UTM ZONE: 13 NORTH DATUM: NAD 1983 (CONUS)
2. ELEVATIONS ARE BASED ON NAVD OF 1929.
3. ALL BOTTOM AND TOP HOLE LOCATIONS ARE MEASURED 90 DEGREES FROM SECTION LINE.
4. USGS QUADRANGLE MAP "PARACHUTE".
5. CURRENT SURFACE LAND USE: RANGE LAND.
6. PDOP AT THE TIME OF LOCATION OF SURFACE WELL = 1.7
7. GPS OPERATOR: P. HOFFMANN


Prepared For: Ursa Operating Company LLC
Proposed B&V 21A-18-07-95 Well, Surface Situate in The NW1/4SW1/4 Section 7, Township 7 South, Range 95 West of the 6 th. Principal Meridian, County of Garfield, State of Colorado.



SURVEYOR'S CERTIFICATE

I, SCOTT E. AIBNER, A REGISTERED LAND SURVEYOR, LICENSED UNDER THE LAWS OF THE STATE OF COLORADO, DO HEREBY CERTIFY THAT THE SURVEY SHOWN HEREON WAS PREPARED BY RIVER VALLEY SURVEY, INC., FOR URSA OPERATING COMPANY LLC, BY ME OR UNDER MY DIRECT SUPERVISION AND HAS BEEN STAKED ON THE GROUND AS SHOWN ON THE PLAT AND THAT THIS PLAT IS A TRUE REPRESENTATION THEREOF.

BY: 
SCOTT E. AIBNER, COLORADO REG. NO. 31143

 **River Valley Survey, Inc.**
110 East 3rd. Street, Suite 213
Rifle, Colorado 81650
Ph: 970-379-7846

Project: RVS 06001-57	
Field Date: 06-16-14	Scale: 1"= 1500'
Date: 8-07-14	Sheet: 1 of 1

303.a Form 2
B&V Pad
B&V 21A-18-07-95
Section 18, Township 7 South, Range 95 West