

WHITING OIL & GAS CORP.

LOCATION DRAWING FOR

RAZOR FED #30K-3105, #30K-3106, #30K-1907,
 #30K-3108, #30K-1905, #30K-1906
 #30K-3107 & #30K-1908
 SECTION 30, T10N, R58W, 6th. P.M.
 NE 1/4 SW 1/4

SCALE: 1" = 300'

DATE SURVEYED: 05-14-12

SURVEYED BY: DAVE SWANSON

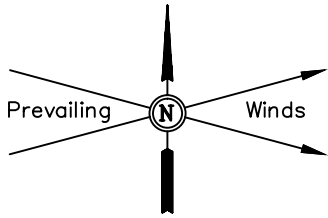
DATE DRAWN: 05-17-12

DRAWN BY: W.M.

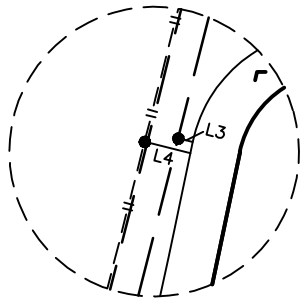
REV: 03-15-13 H.K.W.

REV: 03-20-13 H.K.W.

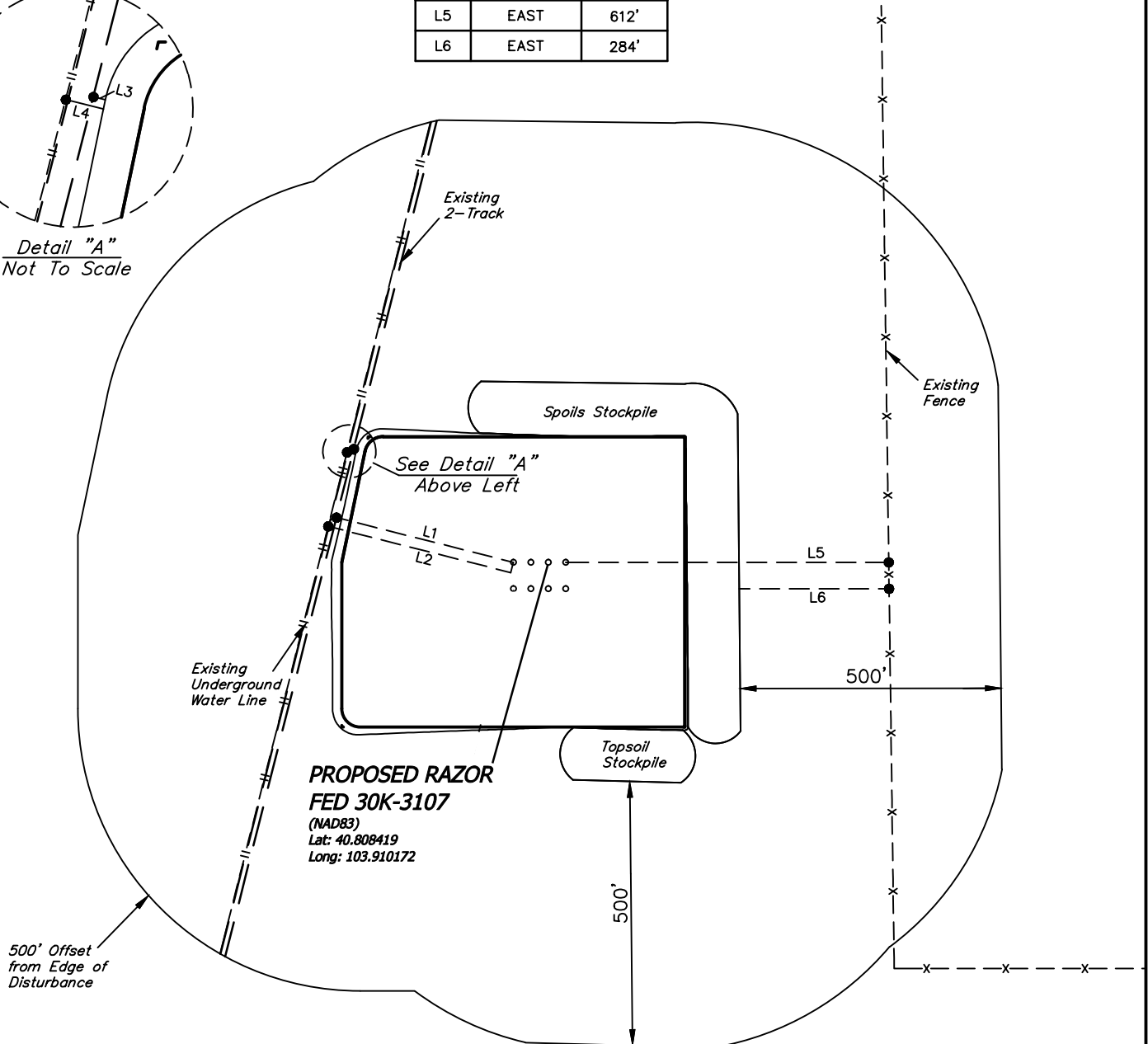
REV: 01-17-14 H.K.W.



LINE TABLE		
LINE	DIRECTION	LENGTH
L1	N76°W	346'
L2	N76°W	357'
L3	N76°W	5'
L4	N76°W	17'
L5	EAST	612'
L6	EAST	284'



Detail "A"
Not To Scale



**PROPOSED RAZOR
 FED 30K-3107**

(NAD83)
 Lat: 40.808419
 Long: 103.910172