

8/7/2014

VIA ELECTRONIC TRANSMITTAL

Department of Natural Resources  
Oil and Gas Conservation Commission  
The Chancery Building  
Attn: Matt Lepore  
1120 Lincoln St., Suite 801  
Denver, CO 80203

Re: **30 Day Certification Letter – Rule 318Ae**  
Johnson 01N-65W-30 Pad  
SESW Sec 30-T1N-R65W, 6<sup>th</sup> PM  
Weld County, Colorado

Dear COGCC Director,

Verdad Oil and Gas Corporation (Verdad) hereby certifies to the Director that a thirty (30-day) notice has been given by certified mail to all owners in the proposed wellbore spacing unit consisting of 320-acres comprised of W/2 of Sec 30-T1N-R65W. We have not received any objections to such well location or proposed spacing unit, therefore Verdad hereby requests the Director to approve the proposed well.

If you should have any questions or concerns regarding this permit, please contact the undersigned at 214-838-2783.

Sincerely,

A handwritten signature in blue ink, reading "L. Arthur Beecherl, IV". The signature is stylized with a large, sweeping "L" and a prominent "B" for Beecherl.

L. Arthur Beecherl, IV  
Vice President of Operations  
Verdad Oil and Gas Corporation

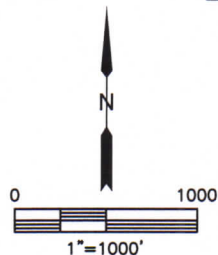
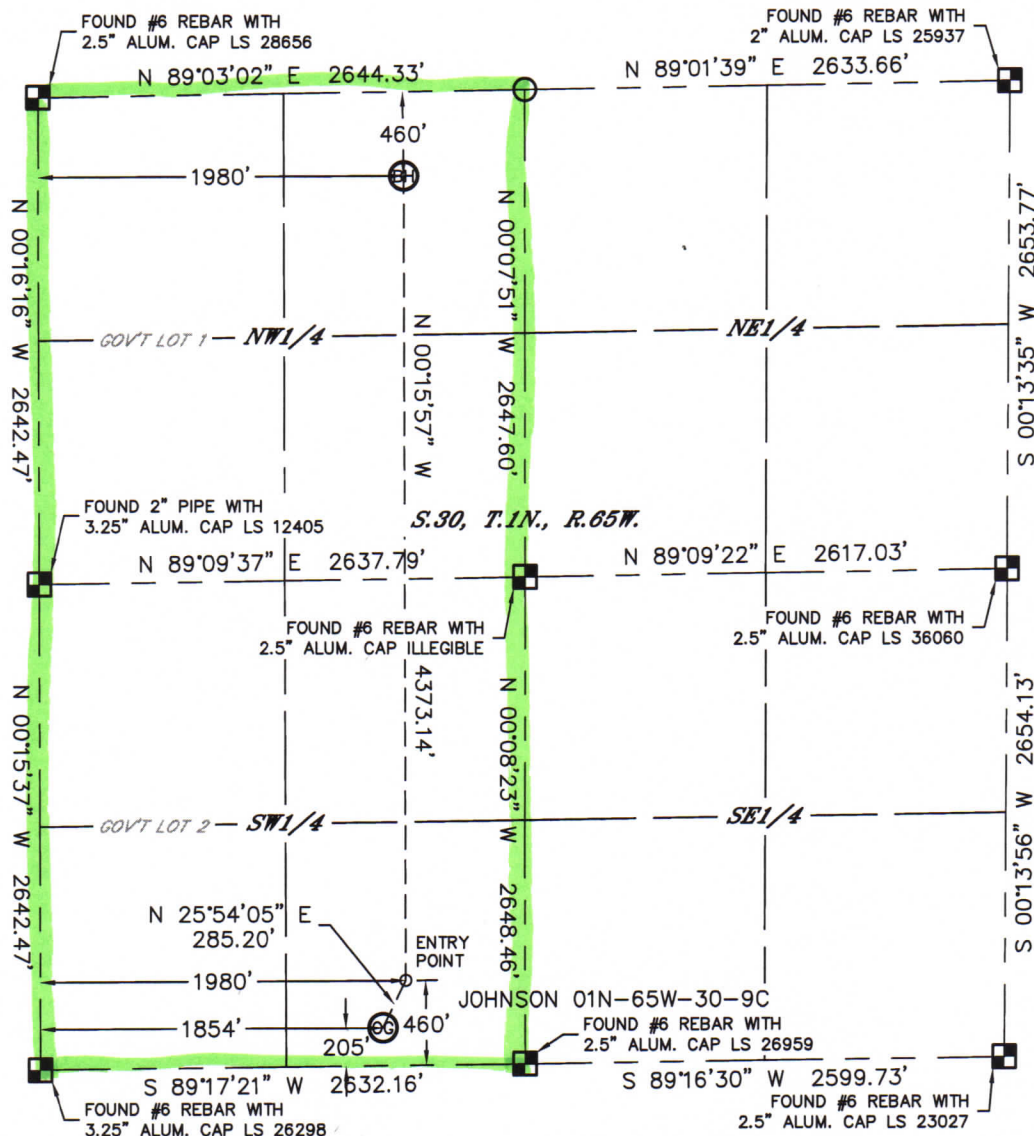


Lat40°, Inc. 1635 Foxtrail Drive, Suite 325 Loveland, CO 970-776-3321

# WELL LOCATION CERTIFICATE

THIS MAP DOES NOT REPRESENT A BOUNDARY SURVEY

SECTION: 30  
TOWNSHIP: 1N  
RANGE: 65W



In accordance with a request from Arthur Beecher with VERDAD OIL & GAS CORPORATION Lat40°, Inc. has determined the surface location of the JOHNSON 01N-65W-30-9C to be 205' from the SOUTH line and 1854' from the WEST line and the bottom hole to be 460' from the NORTH line and 1980' from the WEST line as measured at right angles from the section lines of Section 30, Township 1 North, Range 65 West of the Sixth Principal Meridian, County of Weld, State of Colorado.

I hereby state that this Well Location Certificate was prepared by me, or under my direct supervision, that the fieldwork was completed on 6/17/2014, for and on behalf of VERDAD OIL & GAS COMPANY That this is not a Land Survey Plat or an Improvement Survey Plat, and that it is not to be relied upon for establishment of fence, building, or other future improvement lines.

## NOTE:

- 1) Bearings shown are Grid Bearings of the Colorado State Plane Coordinate System, North Zone, North American Datum 1983. The lineal dimensions as contained herein are based upon the "U.S. Survey Foot."
- 2) Ground elevations are based on an observed GPS elevation (NAVD 1988 DATUM).
- 3) IMPROVEMENTS: See LOCATION DRAWING for all visible improvements within 500' of disturbed area.
- 4) SURFACE USE: CROPLAND
- 5) INSTRUMENT OPERATOR: WYATT HALL
- 6) NEAREST CULTURAL ITEMS:  
BUILDING: 846' NE  
BUILDING UNIT: 885' NE  
HIGH OCCUPANCY BUILDING UNIT: +5280'  
DESIGNATED OUTSIDE ACTIVITY AREA: +5280'  
PUBLIC ROAD: 206' S (CR 4)  
ABOVEGROUND UTILITY: 245' S  
RAILROAD: ±2705' SE  
PROPERTY LINE: 205' S

## SURFACE LOCATION

LAT: 40.01562°N  
LONG: 104.70953°W  
PDOP: 1.4  
ELEV: 4999'  
1/4, 1/4: SESW

## BOTTOM HOLE

LAT: 40.02832°N  
LONG: 104.70901°W

## ENTRY POINT

LAT: 40.01632°N  
LONG: 104.70908°W

## LEGEND

- = ALIQUOT MONUMENT AS DESCRIBED
- = CALCULATED POSITION

Kyle E. Rutz-On behalf of Lat40°, Inc.  
Colorado Licensed Professional  
Land Surveyor No. 38307

DATE: 6/25/2014  
PROJECT#: 2014104

