

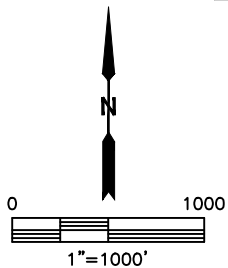
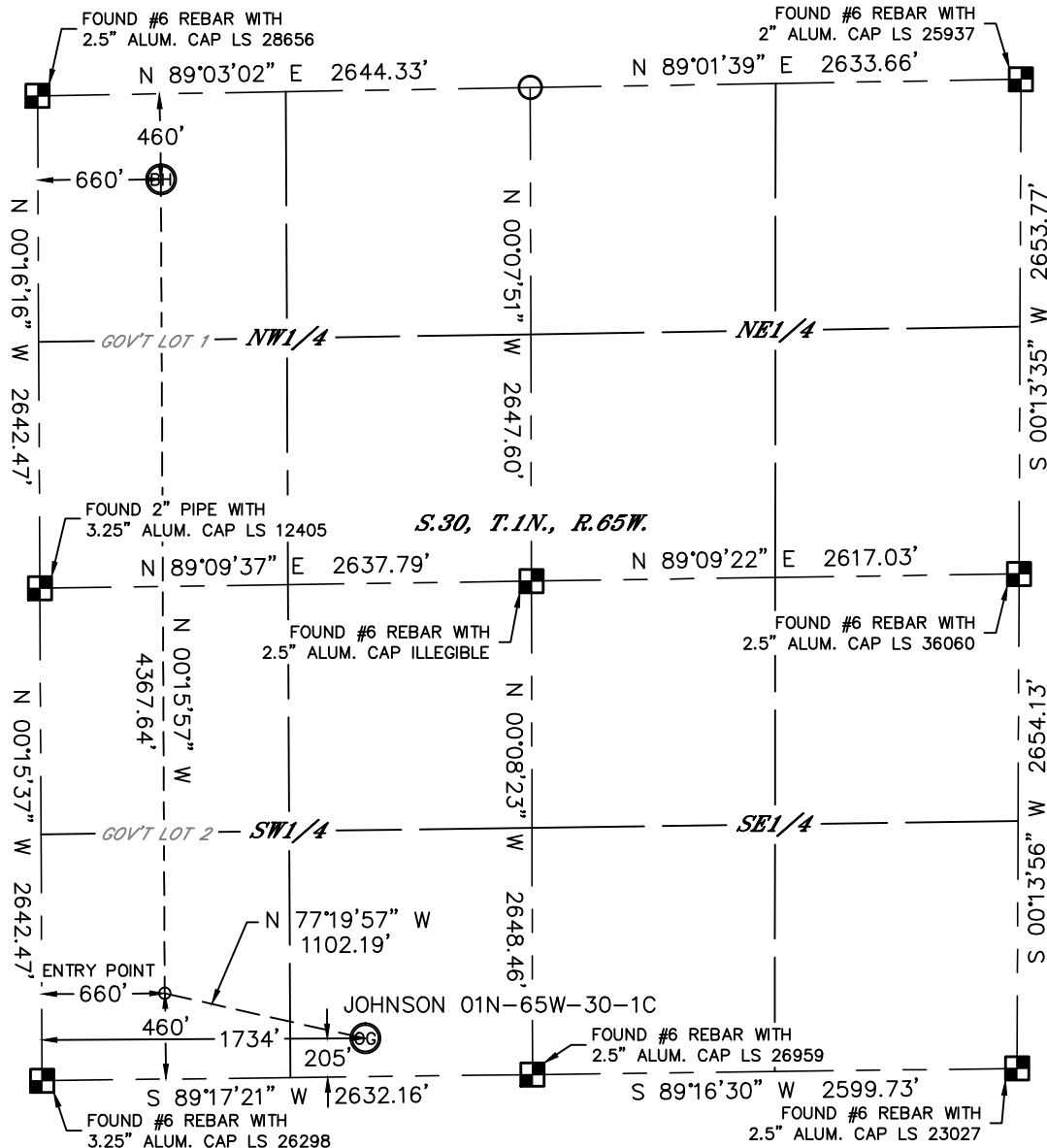


Lat40°, Inc. 1635 Foxtrail Drive, Suite 325 Loveland, CO 970-776-3321

# WELL LOCATION CERTIFICATE

THIS MAP DOES NOT REPRESENT A BOUNDARY SURVEY

SECTION: 30  
TOWNSHIP: 1N  
RANGE: 65W



In accordance with a request from Arthur Beecherl with VERDAD OIL & GAS CORPORATION Lat40°, Inc. has determined the surface location of the JOHNSON 01N-65W-30-1C to be 205' from the SOUTH line and 1734' from the WEST line and the bottom hole to be 460' from the NORTH line and 660' from the WEST line as measured at right angles from the section lines of Section 30, Township 1 North, Range 65 West of the Sixth Principal Meridian, County of Weld, State of Colorado.

I hereby state that this Well Location Certificate was prepared by me, or under my direct supervision, that the fieldwork was completed on 6/17/2014, for and on behalf of VERDAD OIL & GAS COMPANY. That this is not a Land Survey Plat or an Improvement Survey Plat, and that it is not to be relied upon for establishment of fence, building, or other future improvement lines.

#### SURFACE LOCATION

LAT: 40.01561°N  
LONG: 104.70996°W  
PDOP: 1.5  
ELEV: 5000'  
1/4, 1/4: SESW

#### BOTTOM HOLE

LAT: 40.02829°N  
LONG: 104.71372°W

#### ENTRY POINT

LAT: 40.01630°N  
LONG: 104.71379°W

#### LEGEND

- = ALIQUOT MONUMENT AS DESCRIBED
- = CALCULATED POSITION

Kyle E. Rutz-On behalf of Lat40°, Inc.  
Colorado Licensed Professional  
Land Surveyor No. 38307

DATE: 6/25/2014  
PROJECT#: 2014104



#### NOTE:

- 1) Bearings shown are Grid Bearings of the Colorado State Plane Coordinate System, North Zone, North American Datum 1983. The lineal dimensions as contained herein are based upon the "U.S. Survey Foot."
- 2) Ground elevations are based on an observed GPS elevation (NAVD 1988 DATUM).
- 3) IMPROVEMENTS: See LOCATION DRAWING for all visible improvements within 500' of disturbed area.
- 4) SURFACE USE: CROPLAND
- 5) INSTRUMENT OPERATOR: WYATT HALL
- 6) NEAREST CULTURAL ITEMS:  
BUILDING: 961' NE  
BUILDING UNIT: 1004' NE  
HIGH OCCUPANCY BUILDING UNIT: +5280'  
DESIGNATED OUTSIDE ACTIVITY AREA: +5280'  
PUBLIC ROAD: 206' S (CR 4)  
ABOVEGROUND UTILITY: 244' S  
RAILROAD: ±2800' SE  
PROPERTY LINE: 205' S

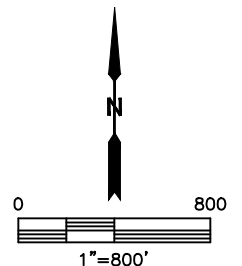
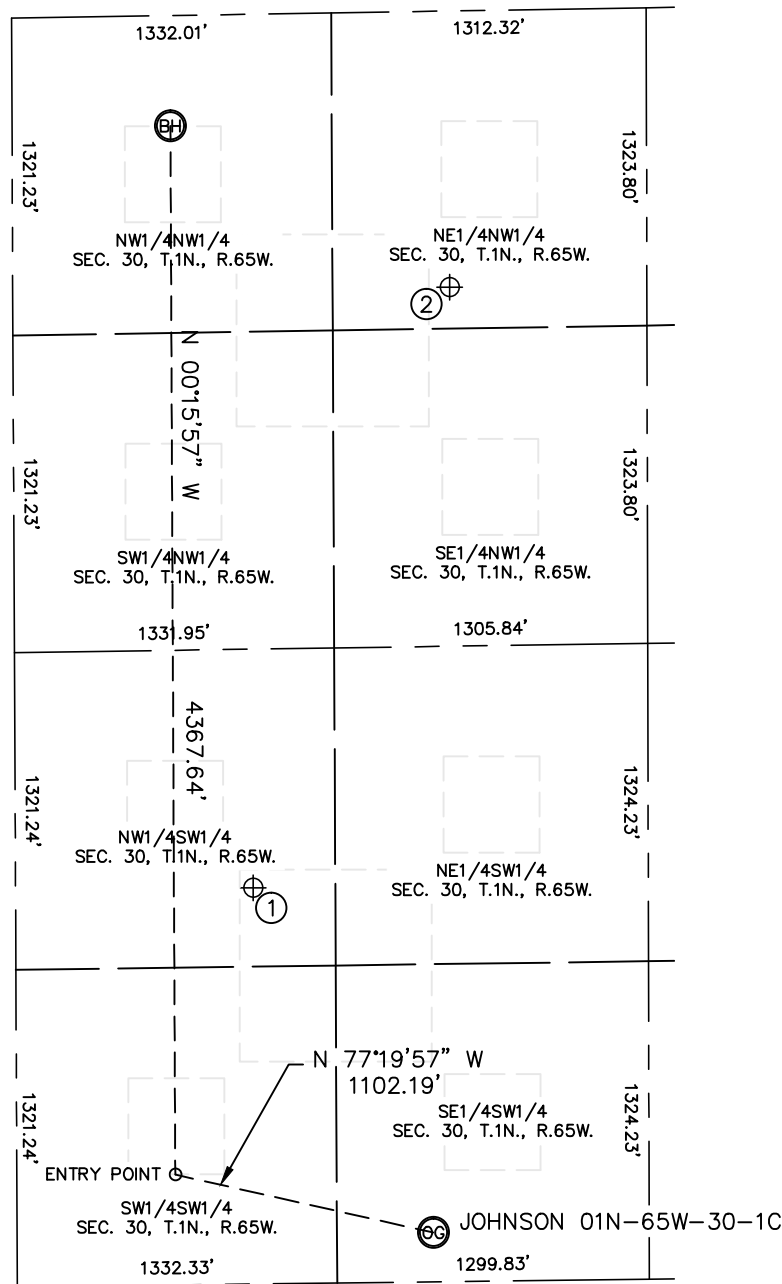


Lat40°, Inc. 1635 Foxtrail Drive, Suite 325 Loveland, CO 970-776-3321

## SITE SKETCH

JOHNSON 01N-65W-30-1C

SECTION: 30  
TOWNSHIP: 1N  
RANGE: 65W



WELL NO.	WELL NAME	SHL FOOTAGE				SHL LAT°	SHL LONG°	PDOP	ELEV (FT.)	1/4/1/4
1	LEHL 1	1650	FSL	990	FWL	40.01960	-104.71256	N/A	5007	NWSW
2	GILMORE 1-30	1150	FNL	1820	FWL	40.02644	-104.70961	N/A	4991	NENW

NOTE: THE ABANDONED WELL DATA SHOWN IN RED ABOVE WAS OBTAINED FROM COGCC SCOUT CARDS.

DATE: 6/25/2014  
PROJECT#: 2014104