

# T1S, R67W, 6th P.M.

## GREAT WESTERN OIL & GAS COMPANY

Well location, WILLOW BEND LD 18-361HN, located as shown in the NE 1/4 NE 1/4 of Section 18, T1S, R67W, 6th P.M., Adams County, Colorado.

### BASIS OF ELEVATION

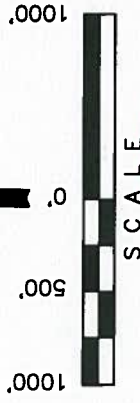
BENCHMARK JR 53 5026 LOCATED IN THE SW 1/4 SE 1/4 OF SECTION 18, T1N, R68W, 6th P.M., TAKEN FROM 1788 PUBLISHED DATUM BY THE UNITED STATES DEPARTMENT OF THE INTERIOR, GEOLOGICAL SURVEY AS BEING 5078 FEET.

### BASIS OF BEARINGS

BASIS OF BEARINGS IS A G.P.S. OBSERVATION.

### LEGEND:

- = 90° SYMBOL
- = PROPOSED WELL HEAD.
- = PROPOSED TARGET BOTTOM HOLE.
- ◇ = PROPOSED ENTRY POINT.
- ▲ = SECTION CORNERS LOCATED.



LINE	DIRECTION	LENGTH
L1	S74°50'21"E	482.10'

THIS IS TO CERTIFY THAT THE ABOVE PLAN WAS PREPARED FROM FIELD NOTES OF ACTUAL SURVEYS MADE BY ME OR UNDER MY SUPERVISION AND THAT THE SAME ARE TRUE AND CORRECT TO THE BEST OF MY KNOWLEDGE AND BELIEF.

David A. Lowrey  
 Registered Land Surveyor  
 Registration No. 28285  
 State of Colorado  
 Exp. 12-13

**UNIVAH ENGINEERING & LAND SURVEYING**  
 85 SOUTH 200 EAST - VERNAL, UTAH 84078  
 (435) 788-1017

SCALE	1" = 1000'	DATE SURVEYED:	11-12-13	DATE DRAWN:	11-22-13
PARTY	BRETT LOWREY A.F. J.W.	REFERENCES	G.L.O. PLAT		
WEATHER	COOL	FILE	GREAT WESTERN OIL & GAS COMPANY		

2013 Alum. Cap.  
 #38304, 0.8' Below  
 Ground in Range Box  
 Lat: 39.971875°  
 Long: 104.922000°

50070'47"W - 4329.50'  
 (To Target Bottom Hole)  
 N0070'43"E  
 1314.58' (Meas.)  
 N0071'02"E  
 1315.08' (Meas.)

2013 Alum. Cap.  
 #38304, 0.7' Below  
 Ground in Range Box  
 Lat: 39.968264°  
 Long: 104.922019°

2013 Alum. Cap.  
 #38304, 0.8' Below  
 Ground in Broken  
 Range Box  
 Lat: 39.964656°  
 Long: 104.922042°

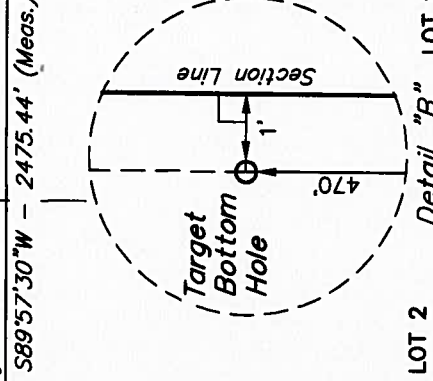
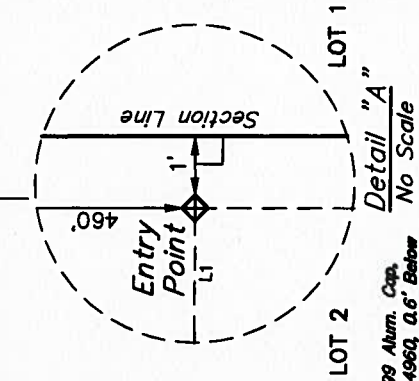
Target  
 Bottom  
 Hole

Alum. Cap. #28856  
 0.9' Below Ground  
 in Range Box  
 Lat: 39.957439°  
 Long: 104.922083°

PDOP = 1.1

NAD 83 (TARGET BOTTOM HOLE)		NAD 83 (ENTRY POINT)		NAD 83 (SURFACE LOCATION)	
LATITUDE =	39°57'31.43" (39.958731)	LATITUDE =	39°58'14.20" (39.970611)	LATITUDE =	39°58'15.45" (39.970958)
LONGITUDE =	104°55'19.49" (104.922081)	LONGITUDE =	104°55'19.24" (104.922011)	LONGITUDE =	104°55'25.21" (104.923669)
NAD 27 (TARGET BOTTOM HOLE)		NAD 27 (ENTRY POINT)		NAD 27 (SURFACE LOCATION)	
LATITUDE =	39°57'31.48" (39.958744)	LATITUDE =	39°58'14.26" (39.970628)	LATITUDE =	39°58'15.51" (39.970975)
LONGITUDE =	104°55'17.57" (104.921547)	LONGITUDE =	104°55'17.32" (104.921478)	LONGITUDE =	104°55'23.29" (104.923136)

1999 Alum. Cap.  
 #24960, 0.6' Below  
 Ground  
 Lat: 39.964664°  
 Long: 104.940275°



Mag Nail in  
 Asphalt Shoulder  
 Lat: 39.971911°  
 Long: 104.931408°

WILLOW BEND  
 LD 18-361HN  
 Elev. Ungraded  
 Ground = 5232'  
 See Detail "A"  
 @ Left

18

1999 Alum. Cap.  
 #24960  
 Lat: 39.964658°  
 Long: 104.931447°

1999 Alum. Cap.  
 #24960  
 Lat: 39.964658°  
 Long: 104.931447°

See Detail "B"  
 @ Left

Alum. Cap. #28856  
 0.9' Below Ground  
 in Range Box  
 Lat: 39.957397°  
 Long: 104.931483°

2002 Alum. Cap.  
 #27269, 1.0' Below  
 Ground  
 Lat: 39.957392°  
 Long: 104.940272°

2002 Alum. Cap.  
 #27269, 1.0' Below  
 Ground  
 Lat: 39.957392°  
 Long: 104.940272°

NAD 83 (TARGET BOTTOM HOLE)		NAD 83 (ENTRY POINT)		NAD 83 (SURFACE LOCATION)	
LATITUDE =	39°57'31.43" (39.958731)	LATITUDE =	39°58'14.20" (39.970611)	LATITUDE =	39°58'15.45" (39.970958)
LONGITUDE =	104°55'19.49" (104.922081)	LONGITUDE =	104°55'19.24" (104.922011)	LONGITUDE =	104°55'25.21" (104.923669)
NAD 27 (TARGET BOTTOM HOLE)		NAD 27 (ENTRY POINT)		NAD 27 (SURFACE LOCATION)	
LATITUDE =	39°57'31.48" (39.958744)	LATITUDE =	39°58'14.26" (39.970628)	LATITUDE =	39°58'15.51" (39.970975)
LONGITUDE =	104°55'17.57" (104.921547)	LONGITUDE =	104°55'17.32" (104.921478)	LONGITUDE =	104°55'23.29" (104.923136)

PDOP = 1.1