

Team File

This technical drawing shows a longitudinal section of a mechanical assembly. The components are labeled as follows:

- A**: Top flange or cap.
- B**: Upper housing or casing.
- C**: Internal shaft or rotor assembly.
- D**: Lower housing or casing.
- E**: Base or mounting plate.
- F**: Seal or gasket between the lower housing and base.
- G**: Internal bearing or support structure.
- H**: Shaft or rotor assembly at the bottom.
- I**: Bottom flange or base plate.
- J**: Internal seal or gasket.
- K**: Internal shaft or rotor assembly.
- L**: Internal bearing or support structure.
- M**: Internal seal or gasket.
- N**: Internal shaft or rotor assembly.
- O**: Internal bearing or support structure.
- P**: Internal seal or gasket.
- Q**: Internal shaft or rotor assembly.
- R**: Internal bearing or support structure.
- S**: Internal seal or gasket.
- T**: Internal shaft or rotor assembly.
- U**: Internal bearing or support structure.
- V**: Internal seal or gasket.
- W**: Internal shaft or rotor assembly.
- X**: Internal bearing or support structure.
- Y**: Internal seal or gasket.
- Z**: Internal shaft or rotor assembly.

By BURT KEY

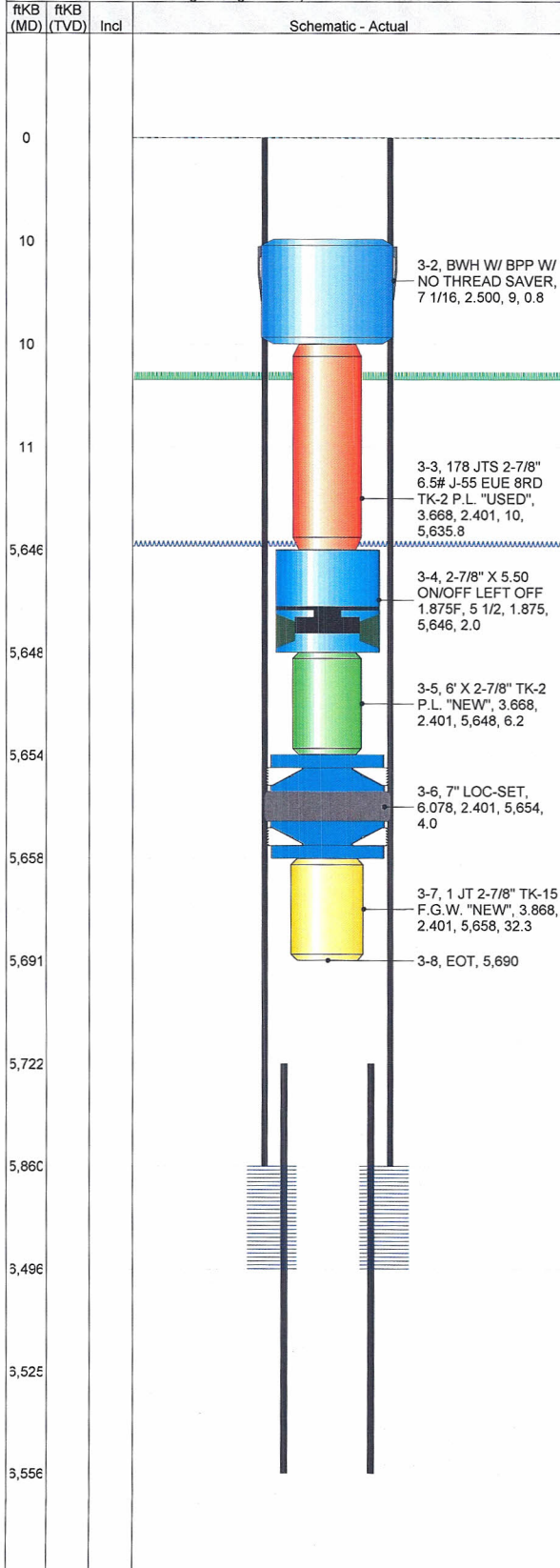
MILLER PUMPS / PACKERS
1161 E. 1300 S. VERNAL UT.
435-781-0666



Tubing Summary

Well Name Emerald 27	Lease EMERALD	Field Name Rangely	Business Unit Mid-Continent/Alaska	
Ground Elevation (ft) 5,434.60	Original RKB Elevation (ft) 5,445.00	Current RKB Elevation (ft) 5,445.00	Mud Line Elevation (ft)	Water Depth (ft)
Current KB to Ground (ft) 10.40	Current KB to Mud Line (ft)	Current KB to Csg Flange (ft)	Current KB to Tubing Head (ft)	

Well Config: - Original Hole, 6/25/2009 5:00:00 PM



Tubing Strings

Tubing Description Tubing - 2		Planned Run? No		Set Depth (ftKB) 5,690.5		Set Depth (TVD) (ftKB)		
Run Date 6/25/2009		Run Job Plug - Temporary, 6/23/2009 06:30		Pull Date		Pull Job		
Jts	Item Description	OD (in)	ID (in)	Wt (lbs/ft)	Grade	Top Thread	Len (ft)	Top (ftKB)
	COMPRESSION 12,000#						-1.50	10.9
	BWH W/ BPP W/ NO THREAD SAVER	7 1/16	2.500				0.80	9.4
178	178 JTS 2-7/8" 6.5# J-55 EUE 8RD TK-2 P.L. "USED"	3.668	2.401				5,635.79	10.2
	2-7/8" X 5.50 ON/OFF LEFT OFF 1.875F	5 1/2	1.875				2.00	5,646.0
	6' X 2-7/8" TK-2 P.L. "NEW"	3.668	2.401				6.20	5,648.0
	7" LOC-SET	6.078	2.401				4.00	5,654.2
1	1 JT 2-7/8" TK-15 F.G.W. "NEW"	3.868	2.401				32.32	5,658.2
	EOT							5,690.5

Rods

Rod Description		Planned Run? No	Set Depth (ftKB)		Set Depth (TVD) (ftKB)	
Run Date		Run Job	Pull Date		Pull Job	
Jts	Item Description	OD (in)	Len (ft)	Top (ftKB)		