

WELL LOCATION FOR AUGUSTUS ENERGY RESOURCES LLC

HAVEN HILL 14-15 4N47W
R 47 W

NOTES

BEARINGS SHOWN HEREON ARE
BASED UPON RTK GPS
OBSERVATIONS

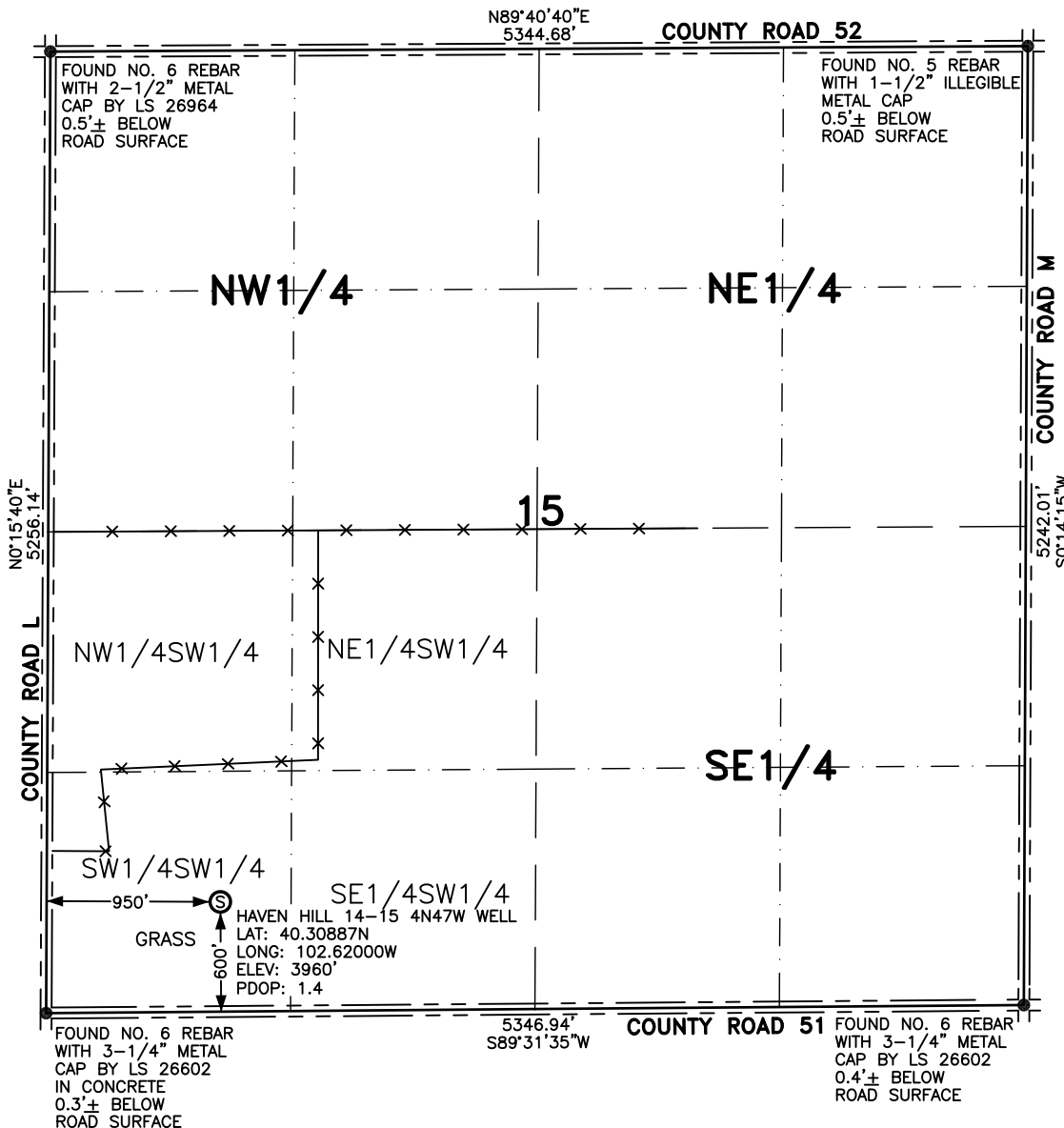
SEE LOCATION DRAWING FOR
IMPROVEMENTS WITHIN 700' OF
LOCATION.

USGS QUAD MAP:
CLARKVILLE SE, COLO.

LAT/LONG VALUES ARE NAD83

ELEVATIONS BASED UPON NGS
OPUS SOLUTION NAVD 88 DATUM

ALL DISTANCES TO SECTION LINES
ARE MEASURED PERPENDICULAR
TO AND ARE AT RIGHT ANGLES
TO SAID SECTION LINES.



T
4
N

LEGEND

⊙ FIELD SURVEYED
WELL LOCATION

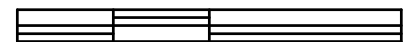
== ROAD

-x-x- FENCE



SCALE: 1" = 1000'

1000 500 0 1000



SCALE IN FEET

THIS WELL LOCATION PLAT HAS BEEN PREPARED FOR AUGUSTUS ENERGY RESOURCES LLC
TO LOCATE THE HAVEN HILL 14-15 4N47W WELL BEING 950 FEET FROM THE WEST LINE AND
600 FEET FROM THE SOUTH LINE IN THE SW1/4SW1/4 OF SECTION 15,
TOWNSHIP 4 NORTH, RANGE 47 WEST OF THE 6TH P.M., YUMA COUNTY, COLORADO.
THE SURFACE ELEVATION AT THIS POINT IS 3960 FEET.
THIS IS NOT A LAND SURVEY PLAT.



LEIBERT-McATEE & ASSOCIATES, INC.

P.O. BOX 442 615 SOUTH TENTH AVENUE
STERLING, CO 80751 970-522-1960

FIELD DATE: 6-13-14

DWG DATE: 6-25-14

GPS OPERATOR:
DARREN VEAL

HAVEN HILL 14-15 4N47W

DWG NO. 843-14

SHEET 1 OF 1