

WPX Energy Rocky Mountain LLC-EBUS

GM 23-13

**H&P 318**

## **Post Job Summary**

### **Surface Casing**

Date Prepared: 06/25/2014  
Job Date: 06/08/14

Submitted by: Evan Russell Grand-Junction Cement Engineer

### The Road to Excellence Starts with Safety

<b>Sold To #:</b> 300721	<b>Ship To #:</b> 3273403	<b>Quote #:</b>	<b>Sales Order #:</b> 0901375949
<b>Customer:</b> WPX ENERGY ROCKY MOUNTAIN LLC-EBUS		<b>Customer Rep:</b> W.C. WILSON	
<b>Well Name:</b> C&C ENERGY		<b>Well #:</b> GM 23-13	<b>API/UWI #:</b> 05-045-22265-00
<b>Field:</b> GRAND VALLEY	<b>City (SAP):</b> PARACHUTE	<b>County/Parish:</b> GARFIELD	<b>State:</b> COLORADO
<b>Legal Description:</b> SW SW-12-7S-96W-286FSL-1004FWL			
<b>Contractor:</b>		<b>Rig/Platform Name/Num:</b>	
<b>Job BOM:</b> 7521			
<b>Well Type:</b> DIRECTIONAL GAS			
<b>Sales Person:</b> HALAMERICA\HB50180		<b>Srvc Supervisor:</b> Eric Carter	
<b>Job</b>			

<b>Formation Name</b>	
<b>Formation Depth (MD)</b>	<b>Top</b> 0 FT. <b>Bottom</b> 1388 FT.
<b>Form Type</b>	BHST
<b>Job depth MD</b>	1388 <b>Job Depth TVD</b> 1388 FT.
<b>Water Depth</b>	<b>Wk Ht Above Floor</b> 5 FT.
<b>Perforation Depth (MD)</b>	<b>From</b> <b>To</b>

Well Data										
Description	New / Used	Size in	ID in	Weight lbm/ft	Thread	Grade	Top MD ft	Bottom MD ft	Top TVD ft	Bottom TVD ft
Casing		9.625	8.921	36	8 RD	H-40	0	34	0	0
Open Hole Section			13.5				0	1400		0
Casing		9.625	9.001	32.3	8 RD	H-40	0	1388	0	0

Tools and Accessories									
Type	Size in	Qty	Make	Depth ft		Type	Size in	Qty	Make
Guide Shoe						Top Plug	9.625	1	HES
Float Shoe						Bottom Plug			
Float Collar						SSR plug set			
Insert Float						Plug Container	9.625	1	HES
Stage Tool						Centralizers			

Miscellaneous Materials											
Gelling Agt		Conc		Surfactant		Conc		Acid Type		Qty	Conc
Treatment Fld		Conc		Inhibitor		Conc		Sand Type		Size	Qty

Fluid Data										
<b>Stage/Plug #: 1</b>										
Fluid #	Stage Type	Fluid Name	Qty	Qty UoM	Mixing Density lbm/gal	Yield ft3/sack	Mix Fluid Gal	Rate bbl/min	Total Mix Fluid Gal	
1	Fresh Water	Fresh Water	20	bbl	8.34			4		
Fluid #	Stage Type	Fluid Name	Qty	Qty UoM	Mixing Density lbm/gal	Yield ft3/sack	Mix Fluid Gal	Rate bbl/min	Total Mix Fluid Gal	
2	Lead Cement	VARICEM (TM) CEMENT	175	sack	12.3	2.38	13.75	8		

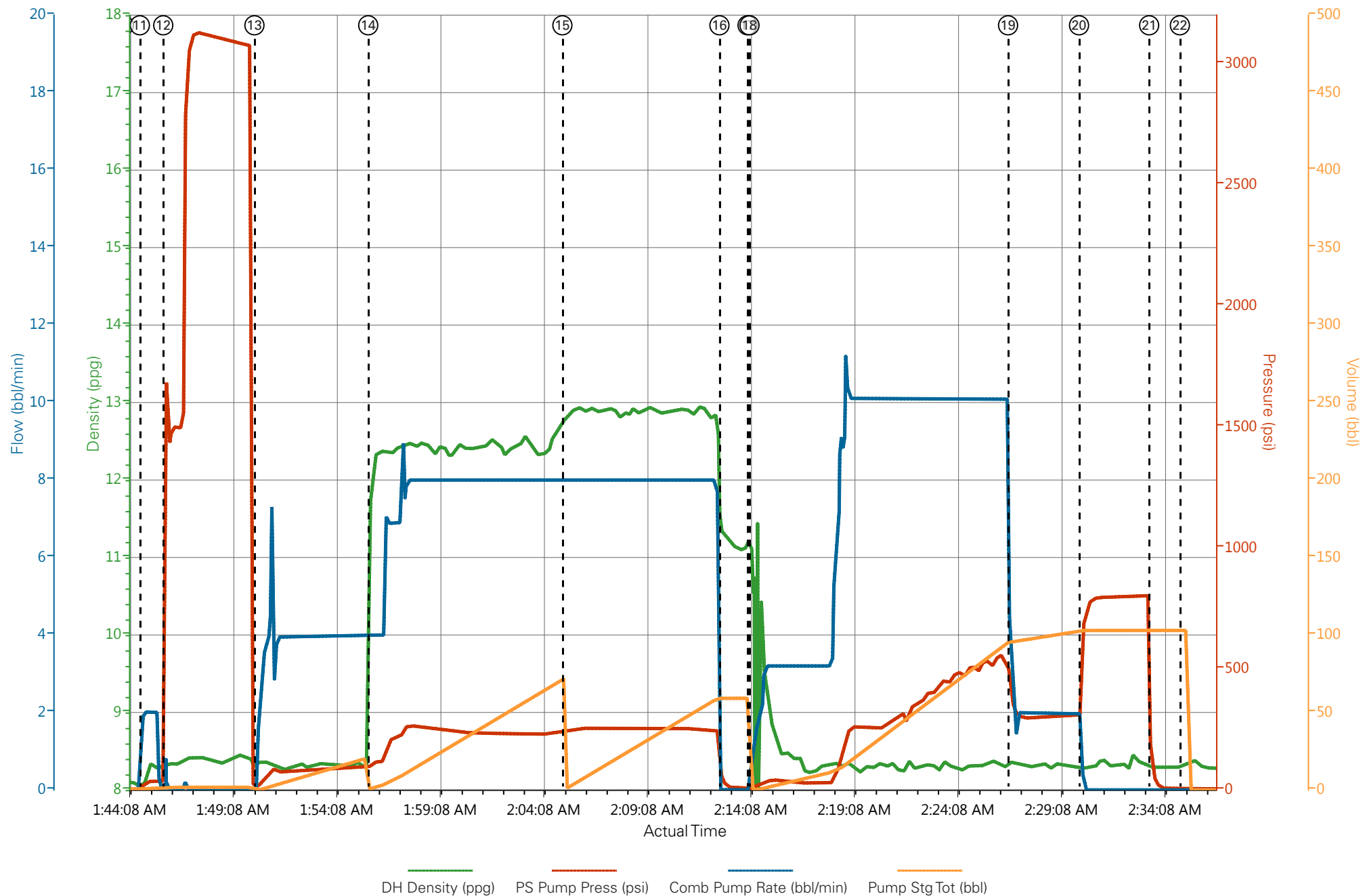
[illegible]

## 3.5 Job Event Log

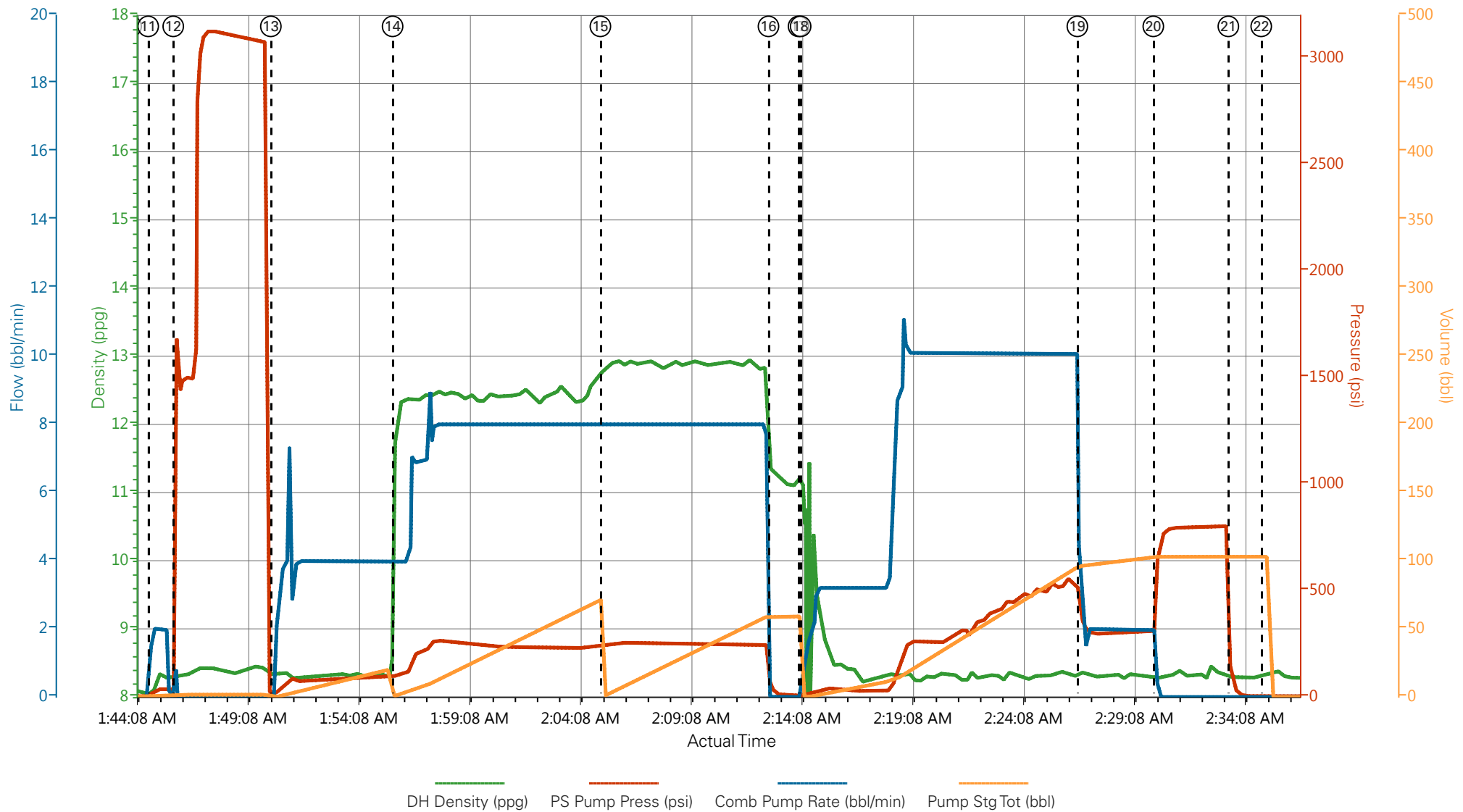
Type	Seq. No.	Graph Label	Date	Time	Source	DH Density (ppg)	PS Pump Press (psi)	Comb Pump Rate (bbl/min)	Pump Stg Tot (bbl)	Comment
Event	1	Call Out	6/7/2014	16:00:00	USER					
Event	2	Depart Yard Safety Meeting	6/7/2014	18:50:00	USER					ATTENDED BY ALL HES CREW
Event	3	Crew Leave Yard	6/7/2014	19:00:00	USER					
Event	4	Arrive At Loc	6/7/2014	20:00:00	USER					
Event	5	Assessment Of Location Safety Meeting	6/8/2014	00:30:00	USER					ATTENDED BY ALL HES CREW
Event	6	Other	6/8/2014	00:40:00	USER					
Event	7	Pre-Rig Up Safety Meeting	6/8/2014	00:50:00	USER					ATTENDED BY ALL HES CREW
Event	8	Rig-Up Equipment	6/8/2014	01:00:00	USER					
Event	9	Pre-Job Safety Meeting	6/8/2014	01:10:00	USER					ATTENDED BY ALL HES CREW, RIG CREW AND COMPANY REP
Event	10	Start Job	6/8/2014	01:44:00	USER					TP 1388.1', TD 1400', MW 9.6 PPG, CASING 1269.59', 9.625", 32.3#, 43.75', 36#, H-40, SJ 43.75', 36#, LJ 34', 36# SET AT 1388.1', HOLE 13.5"
Event	11	Other	6/8/2014	01:44:46	USER	8.33	40	2	2	FILL LINES
Event	12	Test Lines	6/8/2014	01:45:54	USER					PRESSURED UP TO 3150 PSI, PRESSURE HELD
Event	13	Pump Spacer	6/8/2014	01:50:18	USER	8.33	100	4	20	FRESH WATER
Event	14	Pump Lead Cement	6/8/2014	01:55:47	USER	12.3	260	8	74.2	175 SKS VARICEM MIXED AT 12.3 PPG, 2.38 YIELD, 13.75 GL/SK
Event	15	Pump Tail Cement	6/8/2014	02:05:10	USER	12.8	250	8	60.1	160 SKS VARICEM MIXED AT 12.8 PPG, 2.11 YIELD, 11.75 GL/SK
Event	16	Shutdown	6/8/2014	02:12:45	USER					
Event	17	Drop Top Plug	6/8/2014	02:14:07	USER					PLUG LAUNCHED
Event	18	Pump Displacement	6/8/2014	02:14:12	USER	8.33	560	10	95.9	FRESH WATER
Event	19	Slow Rate	6/8/2014	02:26:42	USER	8.33	310	2	10	
Event	20	Bump Plug	6/8/2014	02:30:07	USER		800			PLUG LANDED
Event	21	Check Floats	6/8/2014	02:33:30	USER					

Event	22	End Job	6/8/2014	02:35:00	USER	GOOD CIRCULATION THROUGH OUT JOB, PIPE NOT MOVED DURING JOB, 20 BBLs CEMENT TO SURFACE
Event	23	Post-Job Safety Meeting (Pre Rig-Down)	6/8/2014	02:40:00	USER	ATTENDED BY ALL HES CREW
Event	24	Rig-Down Equipment	6/8/2014	02:45:00	USER	
Event	25	Depart Location Safety Meeting	6/8/2014	03:50	USER	ATTENDED BY ALL HES CREW
Event	26	Crew Leave Location	6/8/2014	04:00	USER	THANK YOU FOR USING HALLIBURTON CEMENT, ERIC CARTER AND CREW

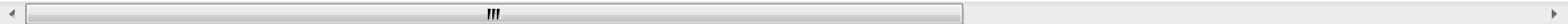
# WPX - GM 23-13 - SURFACE



# WPX - GM 23-13 - SURFACE



- |  |  |                                     |                                    |                          |
|--|--|-------------------------------------|------------------------------------|--------------------------|
| ① Call Out n/a;n/a;n/a;n/a                   | ⑤ Assessment Of Location Safety Meeting 8.3;2;0;18.1 | ⑨ Pre-Job Safety Meeting 8.14;2;0;0 | ⑬ Pump Spacer 8.36;15;0;0          | ⑰ Drop Top Plug 11.13;6; |
| ② Depart Yard Safety Meeting n/a;n/a;n/a;n/a | ⑥ Other 8.3;2;0;0                                    | ⑩ Start Job 8.09;3;0;0              | ⑭ Pump Lead Cement 11.97;104;4;1   | ⑱ Pump Displacement 10   |
| ③ Crew Leave Yard n/a;n/a;n/a;n/a            | ⑦ Pre-Rig Up Safety Meeting 8.17;1;0;0               | ⑪ Other 8.11;18;1.9;0.1             | ⑮ Pump Tail Cement 12.79;252;8;0.7 | ⑲ Slow Rate 8.34;393;3.4 |
| ④ Arrive At Loc n/a;n/a;n/a;n/a              | ⑧ Rig-Up Equipment 8.11;2;0;0                        | ⑫ Test Lines 8.31;1671;0;1.6        | ⑯ Shutdown 11.3;42;0;59.1          | 20 Bump Plug 8.25;596;1  |



**HALLIBURTON** | iCem® Service

Created: 2014-06-07 21:41:03, Version: 3.0.121

Edit

Customer: WPX ENERGY ROCKY MOUNTAIN LLC-EBUS

Job Date: 6/8/2014 12:24:44 AM

Well: GM 23-13

Representative: W.C. WILSON

Sales Order #: 0910375949

ERIC CARTER: ROGER LAULAINEN/ELITE 9

# HALLIBURTON

## Water Analysis Report

Company: WPX

Submitted by: ERIC CARTER

Attention: J.Trout

Lease: H+P 318

Well #: GM 23-13

Date: 6/25/2014

Date Rec.: 6/25/2014

S.O.#: 901375949

Job Type: SURFACE

Specific Gravity	<i>MAX</i>	<b>1</b>
pH	<i>8</i>	<b>7.7</b>
Potassium (K)	<i>5000</i>	<b>200</b> Mg / L
Hardness	<i>500</i>	<b>300</b> Mg / L
Iron (FE2)	<i>300</i>	<b>0</b> Mg / L
Chlorides (Cl)	<i>3000</i>	<b>0</b> Mg / L
Sulfates (SO <sub>4</sub> )	<i>1500</i>	<b>&lt;200</b> Mg / L
Temp	<i>40-80</i>	<b>65</b> Deg
Total Dissolved Solids		<b>490</b> Mg / L

Respectfully: ERIC CARTER

Title: CEMENTING SUPERVISOR

Location: Grand Junction, CO

NOTICE: This report is limited to the described sample tested. Any person using or relying on this report agrees that Halliburton shall not be liable for any loss or damage whether due to act or omission resulting from such report.