

# EXTRACTION OIL & GAS

Location: COLORADO Slot: SLOT#01 MEAD 1(1352'FNL & 402'FEL,SEC.09)  
Field: WELD COUNTY (NAD83/TRUE NORTH) Well: MEAD 1  
Facility: SEC.09-T07N-R66W Wellbore: MEAD 1 PWB

Plot reference wellpath is MEAD 1 (REV-B.0) PWB

True vertical depths are referenced to RIG (RKB)	Grid System: NAD83 / Lambert Colorado SP, Northern Zone (501), US feet
Measured depths are referenced to RIG (RKB)	North Reference: True north
RIG (RKB) to Mean Sea Level: 4991 feet	Scale: True distance
Mean Sea Level to Mud line (At Slot: SLOT#01 MEAD 1(1352'FNL & 402'FEL,SEC.09)): 0 feet	Depths are in feet
Coordinates are in feet referenced to Slot	Created by: painsrtr on 8/5/2014

## Location Information

Facility Name			Grid East (US ft)	Grid North (US ft)	Latitude	Longitude
SEC.09-T07N-R66W			3201342.822	1459836.887	40°35'36.208"N	104°46'29.986"W
Slot	Local N (ft)	Local E (ft)	Grid East (US ft)	Grid North (US ft)	Latitude	Longitude
SLOT#01 MEAD 1(1352'FNL & 402'FEL,SEC.09)	0.00	0.00	3201342.822	1459836.887	40°35'36.208"N	104°46'29.986"W
RIG (RKB) to Mud line (At Slot: SLOT#01 MEAD 1(1352'FNL & 402'FEL,SEC.09))					4991ft	
Mean Sea Level to Mud line (At Slot: SLOT#01 MEAD 1(1352'FNL & 402'FEL,SEC.09))					0ft	
RIG (RKB) to Mean Sea Level					4991ft	

## Targets

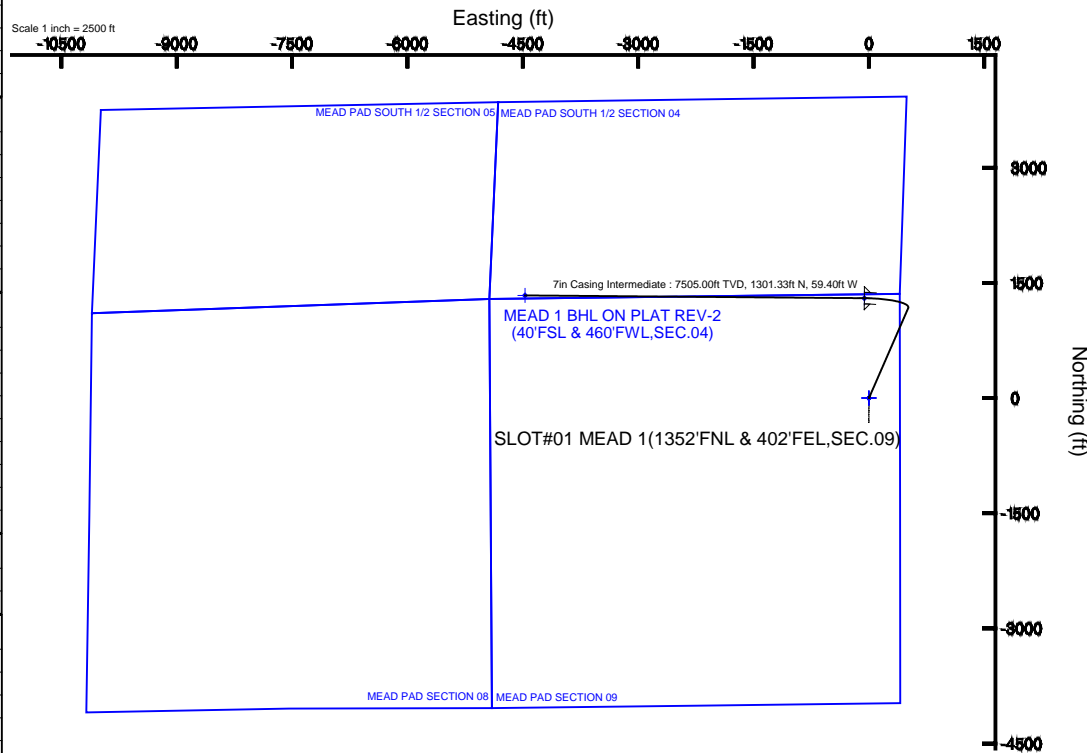
Name	MD (ft)	TVD (ft)	Local N (ft)	Local E (ft)	Grid East (US ft)	Grid North (US ft)	Latitude	Longitude
MEAD PAD SECTION 08		0.00	-0.04	0.03	3201342.85	1459836.85	40°35'36.208"N	104°46'29.986"W
MEAD PAD SECTION 09		0.00	-0.04	0.03	3201342.85	1459836.85	40°35'36.208"N	104°46'29.986"W
MEAD PAD SOUTH 1/2 SECTION 04		0.00	-0.04	0.03	3201342.85	1459836.85	40°35'36.208"N	104°46'29.986"W
MEAD PAD SOUTH 1/2 SECTION 05		0.00	-0.04	0.03	3201342.85	1459836.85	40°35'36.208"N	104°46'29.986"W
MEAD 1 BHL ON PLAT REV-1(258'FSL & 460'FWL,SEC.05)		7505.00	1379.72	-9630.88	3191701.25	1461137.78	40°35'49.823"N	104°48'34.834"W
MEAD 1 BHL ON PLAT REV-2(40'FSL & 460'FWL,SEC.04)	12395.98	7505.00	1337.44	-4472.18	3196859.97	1461137.68	40°35'49.420"N	104°47'27.960"W
MEAD 1 LANDING	7983.05	7505.00	1301.33	-59.40	3201272.79	1461137.65	40°35'49.067"N	104°46'30.756"W
MEAD PAD NORTH 1/4 HARDLINES		7505.00	-0.04	0.03	3201342.85	1459836.85	40°35'36.208"N	104°46'29.986"W

## Survey Program

Start MD (ft)	End MD (ft)	Tool	Model	Log Name/Comment	Wellbore
24.00	13000.00	NaviTrak	NaviTrak (Standard)		MEAD 1 PWB

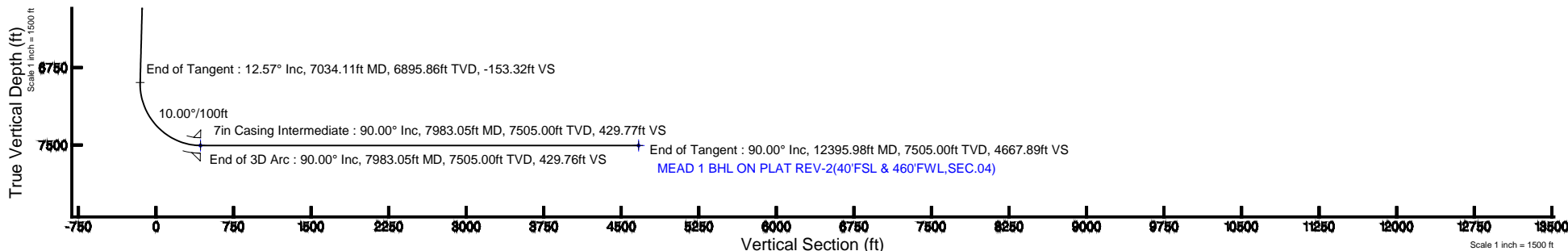
## Well Profile Data

Design Comment	MD (ft)	Inc (°)	Az (°)	TVD (ft)	Local N (ft)	Local E (ft)	DLS (°/100ft)	VS (ft)
Tie On	24.00	0.000	23.540	24.00	0.00	0.00	0.00	0.00
End of Tangent	850.00	0.000	23.540	850.00	0.00	0.00	0.00	0.00
End of Build	1478.65	12.573	23.540	1473.61	62.98	27.44	2.00	-8.24
End of Tangent	7034.11	12.573	23.540	6895.86	1171.67	510.43	0.00	-153.32
End of 3D Arc	7983.05	90.000	270.469	7505.00	1301.33	-59.40	10.00	429.76
End of Tangent	12395.98	90.000	270.469	7505.00	1337.44	-4472.18	0.00	4667.89



BGGM (1945.0 to 2016.0) Dip: 67.10° Field: 52862.2 nT  
Magnetic North is 8.56 degrees East of True North (at 6/12/2014)

To correct azimuth from Magnetic to True add 8.56 degrees



Azimuth 286.65° with reference 0.00 N, 0.00 E



# Planned Wellpath Report

MEAD 1 (REV-B.0) PWP

Page 1 of 7



## REFERENCE WELLPATH IDENTIFICATION

Operator	EXTRACTION OIL & GAS	Slot	SLOT#01 MEAD 1(1352'FNL & 402'FEL,SEC.09)
Area	COLORADO	Well	MEAD 1
Field	WELD COUNTY (NAD83/TRUE NORTH)	Wellbore	MEAD 1 PWB
Facility	SEC.09-T07N-R66W		

## REPORT SETUP INFORMATION

Projection System	NAD83 / Lambert Colorado SP, Northern Zone (501), US feet	Software System	WellArchitect® 4.0.0
North Reference	True	User	Painsetr
Scale	0.999975	Report Generated	8/5/2014 at 10:15:05 AM
Convergence at slot	n/a	Database/Source file	WA_Denver/MEAD_1_PWB.xml

## WELLPATH LOCATION

	Local coordinates		Grid coordinates		Geographic coordinates	
	North[ft]	East[ft]	Easting[US ft]	Northing[US ft]	Latitude	Longitude
Slot Location	0.00	0.00	3201342.82	1459836.89	40°35'36.208"N	104°46'29.986"W
Facility Reference Pt			3201342.82	1459836.89	40°35'36.208"N	104°46'29.986"W
Field Reference Pt			3185481.27	1419166.81	40°28'55.560"N	104°49'59.556"W

## WELLPATH DATUM

Calculation method	Minimum curvature	RIG (RKB) to Facility Vertical Datum	4991.00ft
Horizontal Reference Pt	Slot	RIG (RKB) to Mean Sea Level	4991.00ft
Vertical Reference Pt	RIG (RKB)	RIG (RKB) to Mud Line at Slot (SLOT#01 MEAD 1(1352'FNL & 402'FEL,SEC.09))	4991.00ft
MD Reference Pt	RIG (RKB)	Section Origin	N 0.00, E 0.00 ft
Field Vertical Reference	Mean Sea Level	Section Azimuth	286.65°



# Planned Wellpath Report

MEAD 1 (REV-B.0) PWP

Page 2 of 7



## REFERENCE WELLPATH IDENTIFICATION

Operator	EXTRACTION OIL & GAS	Slot	SLOT#01 MEAD 1(1352'FNL & 402'FEL,SEC.09)
Area	COLORADO	Well	MEAD 1
Field	WELD COUNTY (NAD83/TRUE NORTH)	Wellbore	MEAD 1 PWB
Facility	SEC.09-T07N-R66W		

## WELLPATH DATA (130 stations) † = interpolated/extrapolated station

MD [ft]	Inclination [°]	Azimuth [°]	TVD [ft]	Vert Sect [ft]	North [ft]	East [ft]	DLS [°/100ft]	Comments
0.00†	0.000	23.540	0.00	0.00	0.00	0.00	0.00	
24.00	0.000	23.540	24.00	0.00	0.00	0.00	0.00	Tie On
124.00†	0.000	23.540	124.00	0.00	0.00	0.00	0.00	
224.00†	0.000	23.540	224.00	0.00	0.00	0.00	0.00	
324.00†	0.000	23.540	324.00	0.00	0.00	0.00	0.00	
424.00†	0.000	23.540	424.00	0.00	0.00	0.00	0.00	
524.00†	0.000	23.540	524.00	0.00	0.00	0.00	0.00	
624.00†	0.000	23.540	624.00	0.00	0.00	0.00	0.00	
724.00†	0.000	23.540	724.00	0.00	0.00	0.00	0.00	
824.00†	0.000	23.540	824.00	0.00	0.00	0.00	0.00	
850.00	0.000	23.540	850.00	0.00	0.00	0.00	0.00	End of Tangent
924.00†	1.480	23.540	923.99	-0.11	0.88	0.38	2.00	
1024.00†	3.480	23.540	1023.89	-0.63	4.84	2.11	2.00	
1124.00†	5.480	23.540	1123.58	-1.57	12.00	5.23	2.00	
1224.00†	7.480	23.540	1222.94	-2.92	22.35	9.74	2.00	
1324.00†	9.480	23.540	1321.84	-4.69	35.87	15.63	2.00	
1424.00†	11.480	23.540	1420.17	-6.88	52.54	22.89	2.00	
1478.65	12.573	23.540	1473.61	-8.24	62.98	27.44	2.00	End of Build
1524.00†	12.573	23.540	1517.88	-9.43	72.03	31.38	0.00	
1624.00†	12.573	23.540	1615.48	-12.04	91.99	40.07	0.00	
1724.00†	12.573	23.540	1713.08	-14.65	111.95	48.77	0.00	
1824.00†	12.573	23.540	1810.69	-17.26	131.90	57.46	0.00	
1924.00†	12.573	23.540	1908.29	-19.87	151.86	66.16	0.00	
2024.00†	12.573	23.540	2005.89	-22.48	171.82	74.85	0.00	
2124.00†	12.573	23.540	2103.49	-25.10	191.77	83.54	0.00	
2224.00†	12.573	23.540	2201.09	-27.71	211.73	92.24	0.00	
2324.00†	12.573	23.540	2298.70	-30.32	231.69	100.93	0.00	
2424.00†	12.573	23.540	2396.30	-32.93	251.64	109.63	0.00	
2524.00†	12.573	23.540	2493.90	-35.54	271.60	118.32	0.00	
2624.00†	12.573	23.540	2591.50	-38.15	291.56	127.01	0.00	



# Planned Wellpath Report

MEAD 1 (REV-B.0) PWP

Page 3 of 7



## REFERENCE WELLPATH IDENTIFICATION

Operator	EXTRACTION OIL & GAS	Slot	SLOT#01 MEAD 1(1352'FNL & 402'FEL,SEC.09)
Area	COLORADO	Well	MEAD 1
Field	WELD COUNTY (NAD83/TRUE NORTH)	Wellbore	MEAD 1 PWB
Facility	SEC.09-T07N-R66W		

## WELLPATH DATA (130 stations) † = interpolated/extrapolated station

MD [ft]	Inclination [°]	Azimuth [°]	TVD [ft]	Vert Sect [ft]	North [ft]	East [ft]	DLS [°/100ft]	Comments
2724.00†	12.573	23.540	2689.10	-40.76	311.51	135.71	0.00	
2824.00†	12.573	23.540	2786.70	-43.38	331.47	144.40	0.00	
2924.00†	12.573	23.540	2884.31	-45.99	351.43	153.10	0.00	
3024.00†	12.573	23.540	2981.91	-48.60	371.38	161.79	0.00	
3124.00†	12.573	23.540	3079.51	-51.21	391.34	170.48	0.00	
3224.00†	12.573	23.540	3177.11	-53.82	411.30	179.18	0.00	
3324.00†	12.573	23.540	3274.71	-56.43	431.25	187.87	0.00	
3424.00†	12.573	23.540	3372.32	-59.05	451.21	196.57	0.00	
3524.00†	12.573	23.540	3469.92	-61.66	471.17	205.26	0.00	
3624.00†	12.573	23.540	3567.52	-64.27	491.12	213.95	0.00	
3724.00†	12.573	23.540	3665.12	-66.88	511.08	222.65	0.00	
3824.00†	12.573	23.540	3762.72	-69.49	531.04	231.34	0.00	
3924.00†	12.573	23.540	3860.33	-72.10	550.99	240.04	0.00	
4024.00†	12.573	23.540	3957.93	-74.71	570.95	248.73	0.00	
4124.00†	12.573	23.540	4055.53	-77.33	590.91	257.42	0.00	
4224.00†	12.573	23.540	4153.13	-79.94	610.86	266.12	0.00	
4324.00†	12.573	23.540	4250.73	-82.55	630.82	274.81	0.00	
4424.00†	12.573	23.540	4348.34	-85.16	650.78	283.51	0.00	
4524.00†	12.573	23.540	4445.94	-87.77	670.73	292.20	0.00	
4624.00†	12.573	23.540	4543.54	-90.38	690.69	300.89	0.00	
4724.00†	12.573	23.540	4641.14	-92.99	710.65	309.59	0.00	
4824.00†	12.573	23.540	4738.74	-95.61	730.60	318.28	0.00	
4924.00†	12.573	23.540	4836.35	-98.22	750.56	326.98	0.00	
5024.00†	12.573	23.540	4933.95	-100.83	770.52	335.67	0.00	
5124.00†	12.573	23.540	5031.55	-103.44	790.47	344.36	0.00	
5224.00†	12.573	23.540	5129.15	-106.05	810.43	353.06	0.00	
5324.00†	12.573	23.540	5226.75	-108.66	830.39	361.75	0.00	
5424.00†	12.573	23.540	5324.36	-111.28	850.34	370.45	0.00	
5524.00†	12.573	23.540	5421.96	-113.89	870.30	379.14	0.00	
5624.00†	12.573	23.540	5519.56	-116.50	890.26	387.83	0.00	



# Planned Wellpath Report

MEAD 1 (REV-B.0) PWP

Page 4 of 7



## REFERENCE WELLPATH IDENTIFICATION

Operator	EXTRACTION OIL & GAS	Slot	SLOT#01 MEAD 1(1352'FNL & 402'FEL,SEC.09)
Area	COLORADO	Well	MEAD 1
Field	WELD COUNTY (NAD83/TRUE NORTH)	Wellbore	MEAD 1 PWB
Facility	SEC.09-T07N-R66W		

## WELLPATH DATA (130 stations) † = interpolated/extrapolated station

MD [ft]	Inclination [°]	Azimuth [°]	TVD [ft]	Vert Sect [ft]	North [ft]	East [ft]	DLS [°/100ft]	Comments
5724.00†	12.573	23.540	5617.16	-119.11	910.21	396.53	0.00	
5824.00†	12.573	23.540	5714.76	-121.72	930.17	405.22	0.00	
5924.00†	12.573	23.540	5812.37	-124.33	950.13	413.92	0.00	
6024.00†	12.573	23.540	5909.97	-126.94	970.08	422.61	0.00	
6124.00†	12.573	23.540	6007.57	-129.56	990.04	431.30	0.00	
6224.00†	12.573	23.540	6105.17	-132.17	1010.00	440.00	0.00	
6324.00†	12.573	23.540	6202.77	-134.78	1029.95	448.69	0.00	
6424.00†	12.573	23.540	6300.38	-137.39	1049.91	457.39	0.00	
6524.00†	12.573	23.540	6397.98	-140.00	1069.87	466.08	0.00	
6624.00†	12.573	23.540	6495.58	-142.61	1089.82	474.77	0.00	
6724.00†	12.573	23.540	6593.18	-145.23	1109.78	483.47	0.00	
6824.00†	12.573	23.540	6690.78	-147.84	1129.74	492.16	0.00	
6924.00†	12.573	23.540	6788.39	-150.45	1149.69	500.86	0.00	
7024.00†	12.573	23.540	6885.99	-153.06	1169.65	509.55	0.00	
7034.11	12.573	23.540	6895.86	-153.32	1171.67	510.43	0.00	End of Tangent
7124.00†	12.288	340.863	6983.82	-148.90	1189.71	511.20	10.00	
7224.00†	18.177	309.147	7080.42	-128.21	1209.66	495.58	10.00	
7324.00†	26.589	294.670	7172.87	-91.54	1228.90	463.06	10.00	
7424.00†	35.786	287.007	7258.36	-40.02	1246.84	414.64	10.00	
7524.00†	45.289	282.189	7334.29	24.81	1262.93	351.79	10.00	
7624.00†	54.937	278.749	7398.36	100.97	1276.70	276.42	10.00	
7724.00†	64.662	276.045	7448.60	186.14	1287.71	190.81	10.00	
7824.00†	74.428	273.747	7483.51	277.74	1295.63	97.57	10.00	
7924.00†	84.216	271.660	7502.02	372.98	1300.23	-0.46	10.00	
7983.05	90.000	270.469	7505.00 <sup>1</sup>	429.76	1301.33	-59.40	10.00	End of 3D Arc
8024.00†	90.000	270.469	7505.00	469.09	1301.66	-100.35	0.00	
8124.00†	90.000	270.469	7505.00	565.13	1302.48	-200.35	0.00	
8224.00†	90.000	270.469	7505.00	661.17	1303.30	-300.34	0.00	
8324.00†	90.000	270.469	7505.00	757.21	1304.12	-400.34	0.00	
8424.00†	90.000	270.469	7505.00	853.25	1304.93	-500.34	0.00	



# Planned Wellpath Report

MEAD 1 (REV-B.0) PWP

Page 5 of 7



## REFERENCE WELLPATH IDENTIFICATION

Operator	EXTRACTION OIL & GAS	Slot	SLOT#01 MEAD 1(1352'FNL & 402'FEL,SEC.09)
Area	COLORADO	Well	MEAD 1
Field	WELD COUNTY (NAD83/TRUE NORTH)	Wellbore	MEAD 1 PWB
Facility	SEC.09-T07N-R66W		

## WELLPATH DATA (130 stations) † = interpolated/extrapolated station

MD [ft]	Inclination [°]	Azimuth [°]	TVD [ft]	Vert Sect [ft]	North [ft]	East [ft]	DLS [°/100ft]	Comments
8524.00†	90.000	270.469	7505.00	949.29	1305.75	-600.33	0.00	
8624.00†	90.000	270.469	7505.00	1045.33	1306.57	-700.33	0.00	
8724.00†	90.000	270.469	7505.00	1141.36	1307.39	-800.33	0.00	
8824.00†	90.000	270.469	7505.00	1237.40	1308.21	-900.32	0.00	
8924.00†	90.000	270.469	7505.00	1333.44	1309.03	-1000.32	0.00	
9024.00†	90.000	270.469	7505.00	1429.48	1309.84	-1100.32	0.00	
9124.00†	90.000	270.469	7505.00	1525.52	1310.66	-1200.31	0.00	
9224.00†	90.000	270.469	7505.00	1621.56	1311.48	-1300.31	0.00	
9324.00†	90.000	270.469	7505.00	1717.60	1312.30	-1400.31	0.00	
9424.00†	90.000	270.469	7505.00	1813.63	1313.12	-1500.30	0.00	
9524.00†	90.000	270.469	7505.00	1909.67	1313.94	-1600.30	0.00	
9624.00†	90.000	270.469	7505.00	2005.71	1314.75	-1700.30	0.00	
9724.00†	90.000	270.469	7505.00	2101.75	1315.57	-1800.29	0.00	
9824.00†	90.000	270.469	7505.00	2197.79	1316.39	-1900.29	0.00	
9924.00†	90.000	270.469	7505.00	2293.83	1317.21	-2000.29	0.00	
10024.00†	90.000	270.469	7505.00	2389.87	1318.03	-2100.28	0.00	
10124.00†	90.000	270.469	7505.00	2485.91	1318.85	-2200.28	0.00	
10224.00†	90.000	270.469	7505.00	2581.94	1319.66	-2300.28	0.00	
10324.00†	90.000	270.469	7505.00	2677.98	1320.48	-2400.27	0.00	
10424.00†	90.000	270.469	7505.00	2774.02	1321.30	-2500.27	0.00	
10524.00†	90.000	270.469	7505.00	2870.06	1322.12	-2600.27	0.00	
10624.00†	90.000	270.469	7505.00	2966.10	1322.94	-2700.26	0.00	
10724.00†	90.000	270.469	7505.00	3062.14	1323.76	-2800.26	0.00	
10824.00†	90.000	270.469	7505.00	3158.18	1324.57	-2900.26	0.00	
10924.00†	90.000	270.469	7505.00	3254.22	1325.39	-3000.25	0.00	
11024.00†	90.000	270.469	7505.00	3350.25	1326.21	-3100.25	0.00	
11124.00†	90.000	270.469	7505.00	3446.29	1327.03	-3200.25	0.00	
11224.00†	90.000	270.469	7505.00	3542.33	1327.85	-3300.24	0.00	
11324.00†	90.000	270.469	7505.00	3638.37	1328.66	-3400.24	0.00	
11424.00†	90.000	270.469	7505.00	3734.41	1329.48	-3500.24	0.00	



# Planned Wellpath Report

MEAD 1 (REV-B.0) PWP

Page 6 of 7



## REFERENCE WELLPATH IDENTIFICATION

Operator	EXTRACTION OIL & GAS	Slot	SLOT#01 MEAD 1(1352'FNL & 402'FEL,SEC.09)
Area	COLORADO	Well	MEAD 1
Field	WELD COUNTY (NAD83/TRUE NORTH)	Wellbore	MEAD 1 PWB
Facility	SEC.09-T07N-R66W		

## WELLPATH DATA (130 stations) † = interpolated/extrapolated station

MD [ft]	Inclination [°]	Azimuth [°]	TVD [ft]	Vert Sect [ft]	North [ft]	East [ft]	DLS [°/100ft]	Comments
11524.00†	90.000	270.469	7505.00	3830.45	1330.30	-3600.23	0.00	
11624.00†	90.000	270.469	7505.00	3926.49	1331.12	-3700.23	0.00	
11724.00†	90.000	270.469	7505.00	4022.53	1331.94	-3800.23	0.00	
11824.00†	90.000	270.469	7505.00	4118.56	1332.76	-3900.22	0.00	
11924.00†	90.000	270.469	7505.00	4214.60	1333.57	-4000.22	0.00	
12024.00†	90.000	270.469	7505.00	4310.64	1334.39	-4100.22	0.00	
12124.00†	90.000	270.469	7505.00	4406.68	1335.21	-4200.21	0.00	
12224.00†	90.000	270.469	7505.00	4502.72	1336.03	-4300.21	0.00	
12324.00†	90.000	270.469	7505.00	4598.76	1336.85	-4400.21	0.00	
12395.98	90.000	270.469	7505.00 <sup>2</sup>	4667.89	1337.44	-4472.18	0.00	End of Tangent

## HOLE & CASING SECTIONS - Ref Wellbore: MEAD 1 PWB Ref Wellpath: MEAD 1 (REV-B.0) PWP

String/Diameter	Start MD [ft]	End MD [ft]	Interval [ft]	Start TVD [ft]	End TVD [ft]	Start N/S [ft]	Start E/W [ft]	End N/S [ft]	End E/W [ft]
7in Casing Intermediate	24.00	7983.05	7959.05	24.00	7505.00	0.00	0.00	1301.33	-59.40



# Planned Wellpath Report

MEAD 1 (REV-B.0) PWP

Page 7 of 7



REFERENCE WELLPATH IDENTIFICATION			
Operator	EXTRACTION OIL & GAS	Slot	SLOT#01 MEAD 1(1352'FNL & 402'FEL,SEC.09)
Area	COLORADO	Well	MEAD 1
Field	WELD COUNTY (NAD83/TRUE NORTH)	Wellbore	MEAD 1 PWB
Facility	SEC.09-T07N-R66W		

TARGETS									
Name	MD [ft]	TVD [ft]	North [ft]	East [ft]	Grid East [US ft]	Grid North [US ft]	Latitude	Longitude	Shape
MEAD PAD SECTION 08		0.00	-0.04	0.03	3201342.85	1459836.85	40°35'36.208"N	104°46'29.986"W	polygon
MEAD PAD SECTION 09		0.00	-0.04	0.03	3201342.85	1459836.85	40°35'36.208"N	104°46'29.986"W	polygon
MEAD PAD SOUTH 1/2 SECTION 04		0.00	-0.04	0.03	3201342.85	1459836.85	40°35'36.208"N	104°46'29.986"W	polygon
MEAD PAD SOUTH 1/2 SECTION 05		0.00	-0.04	0.03	3201342.85	1459836.85	40°35'36.208"N	104°46'29.986"W	polygon
MEAD 1 BHL ON PLAT REV-1 (258'FSL & 460'FWL,SEC.05)		7505.00	1379.72	-9630.88	3191701.25	1461137.78	40°35'49.823"N	104°48'34.834"W	point
2) MEAD 1 BHL ON PLAT REV-2 (40'FSL & 460'FWL,SEC.04)	12395.98	7505.00	1337.44	-4472.18	3196859.97	1461137.68	40°35'49.420"N	104°47'27.960"W	point
1) MEAD 1 LANDING	7983.05	7505.00	1301.33	-59.40	3201272.79	1461137.65	40°35'49.067"N	104°46'30.756"W	point
MEAD PAD NORTH 1/4 HARDLINES		7505.00	-0.04	0.03	3201342.85	1459836.85	40°35'36.208"N	104°46'29.986"W	polygon

SURVEY PROGRAM - Ref Wellbore: MEAD 1 PWB Ref Wellpath: MEAD 1 (REV-B.0) PWP				
Start MD [ft]	End MD [ft]	Positional Uncertainty Model	Log Name/Comment	Wellbore
24.00	13000.00	NaviTrak (Standard)		MEAD 1 PWB