

EXTRACTION OIL & GAS

Location: COLORADO Slot: SLOT#04 MEAD 4(1430'FNL & 403'FEL,SEC.09)
Field: WELD COUNTY (NAD83/TRUE NORTH) Well: MEAD 4
Facility: SEC.09-T07N-R66W Wellbore: MEAD 4 PWB

Plot reference wellpath is MEAD 4 (REV-A.0) PWB

True vertical depths are referenced to RIG (RKB)	Grid System: NAD83 / Lambert Colorado SP, Northern Zone (501), US feet
Measured depths are referenced to RIG (RKB)	North Reference: True north
RIG (RKB) to Mean Sea Level: 4991 feet	Scale: True distance
Mean Sea Level to Mud line (At Slot: SLOT#04 MEAD 4(1430'FNL & 403'FEL,SEC.09)): 0 feet	Depths are in feet
Coordinates are in feet referenced to Slot	Created by: painsr on 6/13/2014

Location Information

Facility Name			Grid East (US ft)	Grid North (US ft)	Latitude	Longitude
SEC.09-T07N-R66W			3201342.822	1459836.887	40°35'36.208"N	104°46'29.986"W
Slot	Local N (ft)	Local E (ft)	Grid East (US ft)	Grid North (US ft)	Latitude	Longitude
SLOT#04 MEAD 4(1430FNL & 403FEL,SEC.09)	-78.03	-0.54	3201342.920	1459758.861	40°35'35.437"N	104°46'29.993"W
RIG (RKB) to Mud line (At Slot: SLOT#04 MEAD 4(1430FNL & 403FEL,SEC.09))					4991ft	
Mean Sea Level to Mud line (At Slot: SLOT#04 MEAD 4(1430FNL & 403FEL,SEC.09))					0ft	
RIG (RKB) to Mean Sea Level					4991ft	

Targets

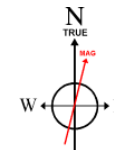
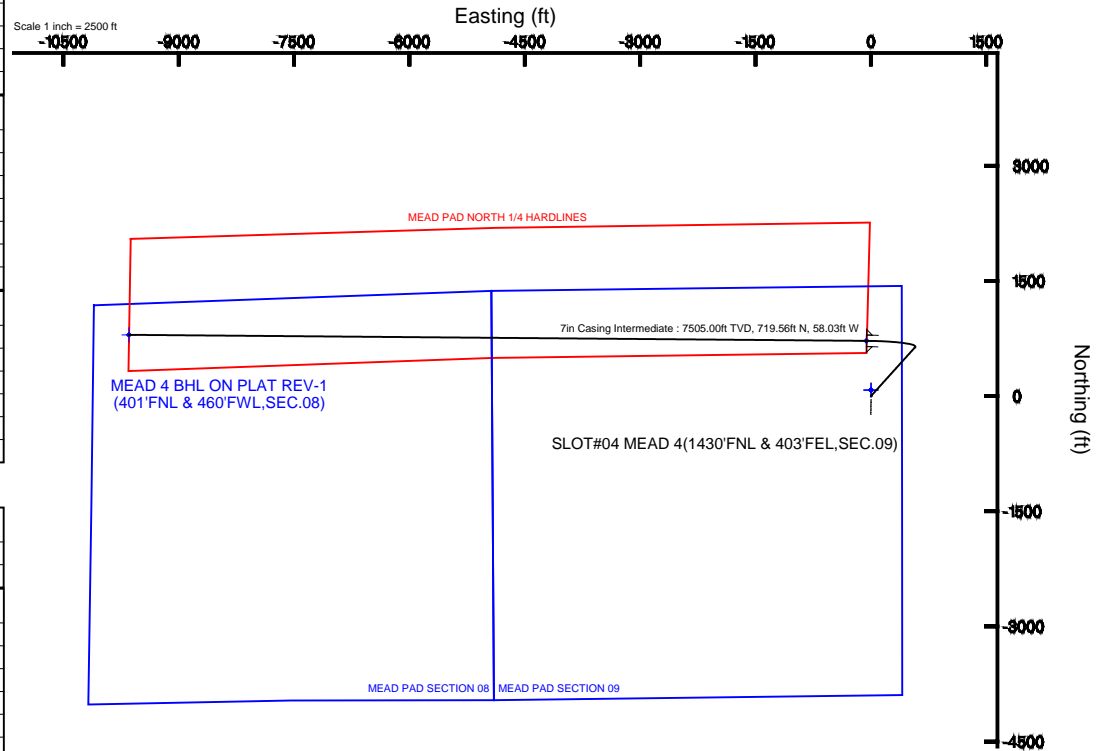
Name	MD (ft)	TVD (ft)	Local N (ft)	Local E (ft)	Grid East (US ft)	Grid North (US ft)	Latitude	Longitude
MEAD PAD SECTION 08		0.00	77.99	0.57	3201342.85	1459836.85	40°35'36.208"N	104°46'29.986"W
MEAD PAD SECTION 09		0.00	77.99	0.57	3201342.85	1459836.85	40°35'36.208"N	104°46'29.986"W
MEAD 4 BHL ON PLAT REV-1(401'FNL & 460'FWL,SEC.08)	17525.26	7505.00	797.96	-9647.81	3191689.17	1460477.89	40°35'43.303"N	104°48'35.057"W
MEAD 4 LANDING	7935.15	7505.00	719.56	-58.03	3201279.01	1460477.90	40°35'42.547"N	104°46'30.745"W
MEAD PAD NORTH 1/4 HARDLINES		7505.00	77.99	0.57	3201342.85	1459836.85	40°35'36.208"N	104°46'29.986"W

Survey Program

Start MD (ft)	End MD (ft)	Tool	Model	Log Name/Comment	Wellbore
24.00	18000.00	NaviTrak	NaviTrak (Standard)		MEAD 4 PWB

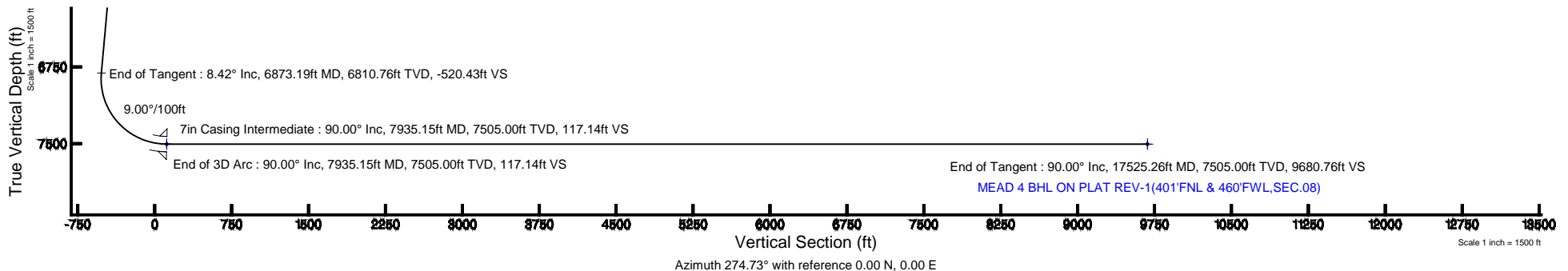
Well Profile Data

Design Comment	MD (ft)	Inc (°)	Az (°)	TVD (ft)	Local N (ft)	Local E (ft)	DLS (°/100ft)	VS (ft)
Tie On	24.00	0.000	42.045	24.00	0.00	0.00	0.00	0.00
End of Tangent	800.00	0.000	42.045	800.00	0.00	0.00	0.00	0.00
End of Build	1220.97	8.419	42.045	1219.46	22.93	20.68	2.00	-18.72
End of Tangent	6873.19	8.419	42.045	6810.76	637.51	574.93	0.00	-520.43
End of 3D Arc	7935.15	90.000	270.468	7505.00	719.56	-58.03	9.00	117.14
End of Tangent	17525.26	90.000	270.468	7505.00	797.96	-9647.81	0.00	9680.76



BGGM (1945.0 to 2016.0) Dip: 67.10° Field: 52862.2 nT
Magnetic North is 8.56 degrees East of True North (at 6/12/2014)

To correct azimuth from Magnetic to True add 8.56 degrees





Planned Wellpath Report

MEAD 4 (REV-A.0) PWP

Page 1 of 9



REFERENCE WELLPATH IDENTIFICATION

Operator	EXTRACTION OIL & GAS	Slot	SLOT#04 MEAD 4(1430'FNL & 403'FEL,SEC.09)
Area	COLORADO	Well	MEAD 4
Field	WELD COUNTY (NAD83/TRUE NORTH)	Wellbore	MEAD 4 PWB
Facility	SEC.09-T07N-R66W		

REPORT SETUP INFORMATION

Projection System	NAD83 / Lambert Colorado SP, Northern Zone (501), US feet	Software System	WellArchitect® 4.0.0
North Reference	True	User	Painsetr
Scale	0.999975	Report Generated	6/13/2014 at 10:35:39 AM
Convergence at slot	n/a	Database/Source file	WA_Denver/MEAD_4_PWB.xml

WELLPATH LOCATION

	Local coordinates		Grid coordinates		Geographic coordinates	
	North[ft]	East[ft]	Easting[US ft]	Northing[US ft]	Latitude	Longitude
Slot Location	-78.03	-0.54	3201342.92	1459758.86	40°35'35.437"N	104°46'29.993"W
Facility Reference Pt			3201342.82	1459836.89	40°35'36.208"N	104°46'29.986"W
Field Reference Pt			3185481.27	1419166.81	40°28'55.560"N	104°49'59.556"W

WELLPATH DATUM

Calculation method	Minimum curvature	RIG (RKB) to Facility Vertical Datum	4991.00ft
Horizontal Reference Pt	Slot	RIG (RKB) to Mean Sea Level	4991.00ft
Vertical Reference Pt	RIG (RKB)	RIG (RKB) to Mud Line at Slot (SLOT#04 MEAD 4(1430'FNL & 403'FEL,SEC.09))	4991.00ft
MD Reference Pt	RIG (RKB)	Section Origin	N 0.00, E 0.00 ft
Field Vertical Reference	Mean Sea Level	Section Azimuth	274.73°



Planned Wellpath Report

MEAD 4 (REV-A.0) PWP

Page 2 of 9



REFERENCE WELLPATH IDENTIFICATION

Operator	EXTRACTION OIL & GAS	Slot	SLOT#04 MEAD 4(1430'FNL & 403'FEL,SEC.09)
Area	COLORADO	Well	MEAD 4
Field	WELD COUNTY (NAD83/TRUE NORTH)	Wellbore	MEAD 4 PWB
Facility	SEC.09-T07N-R66W		

WELLPATH DATA (182 stations) † = interpolated/extrapolated station

MD [ft]	Inclination [°]	Azimuth [°]	TVD [ft]	Vert Sect [ft]	North [ft]	East [ft]	DLS [°/100ft]	Comments
0.00†	0.000	42.045	0.00	0.00	0.00	0.00	0.00	
24.00	0.000	42.045	24.00	0.00	0.00	0.00	0.00	Tie On
124.00†	0.000	42.045	124.00	0.00	0.00	0.00	0.00	
224.00†	0.000	42.045	224.00	0.00	0.00	0.00	0.00	
324.00†	0.000	42.045	324.00	0.00	0.00	0.00	0.00	
424.00†	0.000	42.045	424.00	0.00	0.00	0.00	0.00	
524.00†	0.000	42.045	524.00	0.00	0.00	0.00	0.00	
624.00†	0.000	42.045	624.00	0.00	0.00	0.00	0.00	
724.00†	0.000	42.045	724.00	0.00	0.00	0.00	0.00	
800.00	0.000	42.045	800.00	0.00	0.00	0.00	0.00	End of Tangent
824.00†	0.480	42.045	824.00	-0.06	0.07	0.07	2.00	
924.00†	2.480	42.045	923.96	-1.63	1.99	1.80	2.00	
1024.00†	4.480	42.045	1023.77	-5.31	6.50	5.86	2.00	
1124.00†	6.480	42.045	1123.31	-11.10	13.59	12.26	2.00	
1220.97	8.419	42.045	1219.46	-18.72	22.93	20.68	2.00	End of Build
1224.00†	8.419	42.045	1222.45	-18.99	23.26	20.97	0.00	
1324.00†	8.419	42.045	1321.38	-27.86	34.13	30.78	0.00	
1424.00†	8.419	42.045	1420.30	-36.74	45.00	40.59	0.00	
1524.00†	8.419	42.045	1519.22	-45.61	55.88	50.39	0.00	
1624.00†	8.419	42.045	1618.14	-54.49	66.75	60.20	0.00	
1724.00†	8.419	42.045	1717.07	-63.37	77.62	70.00	0.00	
1824.00†	8.419	42.045	1815.99	-72.24	88.50	79.81	0.00	
1924.00†	8.419	42.045	1914.91	-81.12	99.37	89.62	0.00	
2024.00†	8.419	42.045	2013.83	-90.00	110.24	99.42	0.00	
2124.00†	8.419	42.045	2112.75	-98.87	121.12	109.23	0.00	
2224.00†	8.419	42.045	2211.68	-107.75	131.99	119.03	0.00	
2324.00†	8.419	42.045	2310.60	-116.63	142.86	128.84	0.00	
2424.00†	8.419	42.045	2409.52	-125.50	153.74	138.65	0.00	
2524.00†	8.419	42.045	2508.44	-134.38	164.61	148.45	0.00	
2624.00†	8.419	42.045	2607.37	-143.25	175.48	158.26	0.00	



Planned Wellpath Report

MEAD 4 (REV-A.0) PWP

Page 3 of 9



REFERENCE WELLPATH IDENTIFICATION

Operator	EXTRACTION OIL & GAS	Slot	SLOT#04 MEAD 4(1430'FNL & 403'FEL,SEC.09)
Area	COLORADO	Well	MEAD 4
Field	WELD COUNTY (NAD83/TRUE NORTH)	Wellbore	MEAD 4 PWB
Facility	SEC.09-T07N-R66W		

WELLPATH DATA (182 stations) † = interpolated/extrapolated station

MD [ft]	Inclination [°]	Azimuth [°]	TVD [ft]	Vert Sect [ft]	North [ft]	East [ft]	DLS [°/100ft]	Comments
2724.00†	8.419	42.045	2706.29	-152.13	186.36	168.06	0.00	
2824.00†	8.419	42.045	2805.21	-161.01	197.23	177.87	0.00	
2924.00†	8.419	42.045	2904.13	-169.88	208.10	187.68	0.00	
3024.00†	8.419	42.045	3003.05	-178.76	218.98	197.48	0.00	
3124.00†	8.419	42.045	3101.98	-187.64	229.85	207.29	0.00	
3224.00†	8.419	42.045	3200.90	-196.51	240.72	217.09	0.00	
3324.00†	8.419	42.045	3299.82	-205.39	251.60	226.90	0.00	
3424.00†	8.419	42.045	3398.74	-214.26	262.47	236.70	0.00	
3524.00†	8.419	42.045	3497.67	-223.14	273.34	246.51	0.00	
3624.00†	8.419	42.045	3596.59	-232.02	284.22	256.32	0.00	
3724.00†	8.419	42.045	3695.51	-240.89	295.09	266.12	0.00	
3824.00†	8.419	42.045	3794.43	-249.77	305.96	275.93	0.00	
3924.00†	8.419	42.045	3893.35	-258.65	316.84	285.73	0.00	
4024.00†	8.419	42.045	3992.28	-267.52	327.71	295.54	0.00	
4124.00†	8.419	42.045	4091.20	-276.40	338.58	305.35	0.00	
4224.00†	8.419	42.045	4190.12	-285.27	349.46	315.15	0.00	
4324.00†	8.419	42.045	4289.04	-294.15	360.33	324.96	0.00	
4424.00†	8.419	42.045	4387.97	-303.03	371.20	334.76	0.00	
4524.00†	8.419	42.045	4486.89	-311.90	382.08	344.57	0.00	
4624.00†	8.419	42.045	4585.81	-320.78	392.95	354.38	0.00	
4724.00†	8.419	42.045	4684.73	-329.66	403.83	364.18	0.00	
4824.00†	8.419	42.045	4783.66	-338.53	414.70	373.99	0.00	
4924.00†	8.419	42.045	4882.58	-347.41	425.57	383.79	0.00	
5024.00†	8.419	42.045	4981.50	-356.29	436.45	393.60	0.00	
5124.00†	8.419	42.045	5080.42	-365.16	447.32	403.41	0.00	
5224.00†	8.419	42.045	5179.34	-374.04	458.19	413.21	0.00	
5324.00†	8.419	42.045	5278.27	-382.91	469.07	423.02	0.00	
5424.00†	8.419	42.045	5377.19	-391.79	479.94	432.82	0.00	
5524.00†	8.419	42.045	5476.11	-400.67	490.81	442.63	0.00	
5624.00†	8.419	42.045	5575.03	-409.54	501.69	452.44	0.00	



Planned Wellpath Report

MEAD 4 (REV-A.0) PWP

Page 4 of 9



REFERENCE WELLPATH IDENTIFICATION

Operator	EXTRACTION OIL & GAS	Slot	SLOT#04 MEAD 4(1430'FNL & 403'FEL,SEC.09)
Area	COLORADO	Well	MEAD 4
Field	WELD COUNTY (NAD83/TRUE NORTH)	Wellbore	MEAD 4 PWB
Facility	SEC.09-T07N-R66W		

WELLPATH DATA (182 stations) † = interpolated/extrapolated station

MD [ft]	Inclination [°]	Azimuth [°]	TVD [ft]	Vert Sect [ft]	North [ft]	East [ft]	DLS [°/100ft]	Comments
5724.00†	8.419	42.045	5673.96	-418.42	512.56	462.24	0.00	
5824.00†	8.419	42.045	5772.88	-427.30	523.43	472.05	0.00	
5924.00†	8.419	42.045	5871.80	-436.17	534.31	481.85	0.00	
6024.00†	8.419	42.045	5970.72	-445.05	545.18	491.66	0.00	
6124.00†	8.419	42.045	6069.64	-453.92	556.05	501.47	0.00	
6224.00†	8.419	42.045	6168.57	-462.80	566.93	511.27	0.00	
6324.00†	8.419	42.045	6267.49	-471.68	577.80	521.08	0.00	
6424.00†	8.419	42.045	6366.41	-480.55	588.67	530.88	0.00	
6524.00†	8.419	42.045	6465.33	-489.43	599.55	540.69	0.00	
6624.00†	8.419	42.045	6564.26	-498.31	610.42	550.49	0.00	
6724.00†	8.419	42.045	6663.18	-507.18	621.29	560.30	0.00	
6824.00†	8.419	42.045	6762.10	-516.06	632.17	570.11	0.00	
6873.19	8.419	42.045	6810.76	-520.43	637.51	574.93	0.00	End of Tangent
6924.00†	6.397	9.512	6861.17	-522.92	643.07	577.89	9.00	
7024.00†	10.179	308.544	6960.27	-516.03	654.09	571.89	9.00	
7124.00†	18.100	290.270	7057.21	-493.67	665.00	550.36	9.00	
7224.00†	26.701	283.186	7149.59	-456.41	675.53	513.84	9.00	
7324.00†	35.491	279.402	7235.15	-405.15	685.42	463.22	9.00	
7424.00†	44.356	276.971	7311.77	-341.16	694.42	399.76	9.00	
7524.00†	53.258	275.210	7377.56	-266.01	702.32	325.00	9.00	
7624.00†	62.181	273.818	7430.92	-181.55	708.91	240.81	9.00	
7724.00†	71.116	272.639	7470.51	-89.87	714.05	149.23	9.00	
7824.00†	80.058	271.580	7495.38	6.78	717.59	52.55	9.00	
7924.00†	89.003	270.579	7504.90	106.02	719.46	-46.88	9.00	
7935.15	90.000	270.468	7505.00 ¹	117.14	719.56	-58.03	9.00	End of 3D Arc
8024.00†	90.000	270.468	7505.00	205.75	720.29	-146.87	0.00	
8124.00†	90.000	270.468	7505.00	305.47	721.10	-246.87	0.00	
8224.00†	90.000	270.468	7505.00	405.19	721.92	-346.87	0.00	
8324.00†	90.000	270.468	7505.00	504.92	722.74	-446.86	0.00	
8424.00†	90.000	270.468	7505.00	604.64	723.56	-546.86	0.00	



Planned Wellpath Report

MEAD 4 (REV-A.0) PWP

Page 5 of 9



REFERENCE WELLPATH IDENTIFICATION

Operator	EXTRACTION OIL & GAS	Slot	SLOT#04 MEAD 4(1430'FNL & 403'FEL,SEC.09)
Area	COLORADO	Well	MEAD 4
Field	WELD COUNTY (NAD83/TRUE NORTH)	Wellbore	MEAD 4 PWB
Facility	SEC.09-T07N-R66W		

WELLPATH DATA (182 stations) † = interpolated/extrapolated station

MD [ft]	Inclination [°]	Azimuth [°]	TVD [ft]	Vert Sect [ft]	North [ft]	East [ft]	DLS [°/100ft]	Comments
8524.00†	90.000	270.468	7505.00	704.36	724.37	-646.86	0.00	
8624.00†	90.000	270.468	7505.00	804.09	725.19	-746.85	0.00	
8724.00†	90.000	270.468	7505.00	903.81	726.01	-846.85	0.00	
8824.00†	90.000	270.468	7505.00	1003.54	726.83	-946.85	0.00	
8924.00†	90.000	270.468	7505.00	1103.26	727.64	-1046.84	0.00	
9024.00†	90.000	270.468	7505.00	1202.98	728.46	-1146.84	0.00	
9124.00†	90.000	270.468	7505.00	1302.71	729.28	-1246.84	0.00	
9224.00†	90.000	270.468	7505.00	1402.43	730.10	-1346.83	0.00	
9324.00†	90.000	270.468	7505.00	1502.15	730.91	-1446.83	0.00	
9424.00†	90.000	270.468	7505.00	1601.88	731.73	-1546.83	0.00	
9524.00†	90.000	270.468	7505.00	1701.60	732.55	-1646.82	0.00	
9624.00†	90.000	270.468	7505.00	1801.33	733.37	-1746.82	0.00	
9724.00†	90.000	270.468	7505.00	1901.05	734.18	-1846.82	0.00	
9824.00†	90.000	270.468	7505.00	2000.77	735.00	-1946.81	0.00	
9924.00†	90.000	270.468	7505.00	2100.50	735.82	-2046.81	0.00	
10024.00†	90.000	270.468	7505.00	2200.22	736.64	-2146.81	0.00	
10124.00†	90.000	270.468	7505.00	2299.94	737.45	-2246.80	0.00	
10224.00†	90.000	270.468	7505.00	2399.67	738.27	-2346.80	0.00	
10324.00†	90.000	270.468	7505.00	2499.39	739.09	-2446.80	0.00	
10424.00†	90.000	270.468	7505.00	2599.12	739.91	-2546.79	0.00	
10524.00†	90.000	270.468	7505.00	2698.84	740.72	-2646.79	0.00	
10624.00†	90.000	270.468	7505.00	2798.56	741.54	-2746.79	0.00	
10724.00†	90.000	270.468	7505.00	2898.29	742.36	-2846.78	0.00	
10824.00†	90.000	270.468	7505.00	2998.01	743.18	-2946.78	0.00	
10924.00†	90.000	270.468	7505.00	3097.73	743.99	-3046.78	0.00	
11024.00†	90.000	270.468	7505.00	3197.46	744.81	-3146.77	0.00	
11124.00†	90.000	270.468	7505.00	3297.18	745.63	-3246.77	0.00	
11224.00†	90.000	270.468	7505.00	3396.91	746.45	-3346.77	0.00	
11324.00†	90.000	270.468	7505.00	3496.63	747.26	-3446.76	0.00	
11424.00†	90.000	270.468	7505.00	3596.35	748.08	-3546.76	0.00	



Planned Wellpath Report

MEAD 4 (REV-A.0) PWP

Page 6 of 9



REFERENCE WELLPATH IDENTIFICATION

Operator	EXTRACTION OIL & GAS	Slot	SLOT#04 MEAD 4(1430'FNL & 403'FEL,SEC.09)
Area	COLORADO	Well	MEAD 4
Field	WELD COUNTY (NAD83/TRUE NORTH)	Wellbore	MEAD 4 PWB
Facility	SEC.09-T07N-R66W		

WELLPATH DATA (182 stations) † = interpolated/extrapolated station

MD [ft]	Inclination [°]	Azimuth [°]	TVD [ft]	Vert Sect [ft]	North [ft]	East [ft]	DLS [°/100ft]	Comments
11524.00†	90.000	270.468	7505.00	3696.08	748.90	-3646.76	0.00	
11624.00†	90.000	270.468	7505.00	3795.80	749.72	-3746.75	0.00	
11724.00†	90.000	270.468	7505.00	3895.52	750.53	-3846.75	0.00	
11824.00†	90.000	270.468	7505.00	3995.25	751.35	-3946.75	0.00	
11924.00†	90.000	270.468	7505.00	4094.97	752.17	-4046.74	0.00	
12024.00†	90.000	270.468	7505.00	4194.70	752.99	-4146.74	0.00	
12124.00†	90.000	270.468	7505.00	4294.42	753.80	-4246.74	0.00	
12224.00†	90.000	270.468	7505.00	4394.14	754.62	-4346.73	0.00	
12324.00†	90.000	270.468	7505.00	4493.87	755.44	-4446.73	0.00	
12424.00†	90.000	270.468	7505.00	4593.59	756.26	-4546.73	0.00	
12524.00†	90.000	270.468	7505.00	4693.31	757.07	-4646.72	0.00	
12624.00†	90.000	270.468	7505.00	4793.04	757.89	-4746.72	0.00	
12724.00†	90.000	270.468	7505.00	4892.76	758.71	-4846.72	0.00	
12824.00†	90.000	270.468	7505.00	4992.49	759.53	-4946.71	0.00	
12924.00†	90.000	270.468	7505.00	5092.21	760.34	-5046.71	0.00	
13024.00†	90.000	270.468	7505.00	5191.93	761.16	-5146.71	0.00	
13124.00†	90.000	270.468	7505.00	5291.66	761.98	-5246.70	0.00	
13224.00†	90.000	270.468	7505.00	5391.38	762.80	-5346.70	0.00	
13324.00†	90.000	270.468	7505.00	5491.10	763.61	-5446.70	0.00	
13424.00†	90.000	270.468	7505.00	5590.83	764.43	-5546.69	0.00	
13524.00†	90.000	270.468	7505.00	5690.55	765.25	-5646.69	0.00	
13624.00†	90.000	270.468	7505.00	5790.28	766.07	-5746.69	0.00	
13724.00†	90.000	270.468	7505.00	5890.00	766.88	-5846.68	0.00	
13824.00†	90.000	270.468	7505.00	5989.72	767.70	-5946.68	0.00	
13924.00†	90.000	270.468	7505.00	6089.45	768.52	-6046.68	0.00	
14024.00†	90.000	270.468	7505.00	6189.17	769.34	-6146.67	0.00	
14124.00†	90.000	270.468	7505.00	6288.89	770.15	-6246.67	0.00	
14224.00†	90.000	270.468	7505.00	6388.62	770.97	-6346.67	0.00	
14324.00†	90.000	270.468	7505.00	6488.34	771.79	-6446.66	0.00	
14424.00†	90.000	270.468	7505.00	6588.07	772.61	-6546.66	0.00	



Planned Wellpath Report

MEAD 4 (REV-A.0) PWP

Page 7 of 9



REFERENCE WELLPATH IDENTIFICATION

Operator	EXTRACTION OIL & GAS	Slot	SLOT#04 MEAD 4(1430'FNL & 403'FEL,SEC.09)
Area	COLORADO	Well	MEAD 4
Field	WELD COUNTY (NAD83/TRUE NORTH)	Wellbore	MEAD 4 PWB
Facility	SEC.09-T07N-R66W		

WELLPATH DATA (182 stations) † = interpolated/extrapolated station

MD [ft]	Inclination [°]	Azimuth [°]	TVD [ft]	Vert Sect [ft]	North [ft]	East [ft]	DLS [°/100ft]	Comments
14524.00†	90.000	270.468	7505.00	6687.79	773.42	-6646.66	0.00	
14624.00†	90.000	270.468	7505.00	6787.51	774.24	-6746.65	0.00	
14724.00†	90.000	270.468	7505.00	6887.24	775.06	-6846.65	0.00	
14824.00†	90.000	270.468	7505.00	6986.96	775.88	-6946.65	0.00	
14924.00†	90.000	270.468	7505.00	7086.69	776.69	-7046.64	0.00	
15024.00†	90.000	270.468	7505.00	7186.41	777.51	-7146.64	0.00	
15124.00†	90.000	270.468	7505.00	7286.13	778.33	-7246.64	0.00	
15224.00†	90.000	270.468	7505.00	7385.86	779.15	-7346.63	0.00	
15324.00†	90.000	270.468	7505.00	7485.58	779.96	-7446.63	0.00	
15424.00†	90.000	270.468	7505.00	7585.30	780.78	-7546.63	0.00	
15524.00†	90.000	270.468	7505.00	7685.03	781.60	-7646.62	0.00	
15624.00†	90.000	270.468	7505.00	7784.75	782.42	-7746.62	0.00	
15724.00†	90.000	270.468	7505.00	7884.48	783.23	-7846.62	0.00	
15824.00†	90.000	270.468	7505.00	7984.20	784.05	-7946.61	0.00	
15924.00†	90.000	270.468	7505.00	8083.92	784.87	-8046.61	0.00	
16024.00†	90.000	270.468	7505.00	8183.65	785.69	-8146.61	0.00	
16124.00†	90.000	270.468	7505.00	8283.37	786.50	-8246.60	0.00	
16224.00†	90.000	270.468	7505.00	8383.09	787.32	-8346.60	0.00	
16324.00†	90.000	270.468	7505.00	8482.82	788.14	-8446.60	0.00	
16424.00†	90.000	270.468	7505.00	8582.54	788.96	-8546.59	0.00	
16524.00†	90.000	270.468	7505.00	8682.27	789.77	-8646.59	0.00	
16624.00†	90.000	270.468	7505.00	8781.99	790.59	-8746.59	0.00	
16724.00†	90.000	270.468	7505.00	8881.71	791.41	-8846.58	0.00	
16824.00†	90.000	270.468	7505.00	8981.44	792.23	-8946.58	0.00	
16924.00†	90.000	270.468	7505.00	9081.16	793.04	-9046.58	0.00	
17024.00†	90.000	270.468	7505.00	9180.88	793.86	-9146.57	0.00	
17124.00†	90.000	270.468	7505.00	9280.61	794.68	-9246.57	0.00	
17224.00†	90.000	270.468	7505.00	9380.33	795.50	-9346.57	0.00	
17324.00†	90.000	270.468	7505.00	9480.06	796.31	-9446.56	0.00	
17424.00†	90.000	270.468	7505.00	9579.78	797.13	-9546.56	0.00	



Planned Wellpath Report

MEAD 4 (REV-A.0) PWP

Page 8 of 9



REFERENCE WELLPATH IDENTIFICATION

Operator	EXTRACTION OIL & GAS	Slot	SLOT#04 MEAD 4(1430'FNL & 403'FEL,SEC.09)
Area	COLORADO	Well	MEAD 4
Field	WELD COUNTY (NAD83/TRUE NORTH)	Wellbore	MEAD 4 PWB
Facility	SEC.09-T07N-R66W		

WELLPATH DATA (182 stations) † = interpolated/extrapolated station

MD [ft]	Inclination [°]	Azimuth [°]	TVD [ft]	Vert Sect [ft]	North [ft]	East [ft]	DLS [°/100ft]	Comments
17524.00†	90.000	270.468	7505.00	9679.50	797.95	-9646.56	0.00	
17525.26	90.000	270.468	7505.00 ²	9680.76	797.96	-9647.81	0.00	End of Tangent

HOLE & CASING SECTIONS - Ref Wellbore: MEAD 4 PWB Ref Wellpath: MEAD 4 (REV-A.0) PWP

String/Diameter	Start MD [ft]	End MD [ft]	Interval [ft]	Start TVD [ft]	End TVD [ft]	Start N/S [ft]	Start E/W [ft]	End N/S [ft]	End E/W [ft]
7in Casing Intermediate	24.00	7935.15	7911.15	24.00	7505.00	0.00	0.00	719.56	-58.03



Planned Wellpath Report

MEAD 4 (REV-A.0) PWP

Page 9 of 9



REFERENCE WELLPATH IDENTIFICATION

Operator	EXTRACTION OIL & GAS	Slot	SLOT#04 MEAD 4(1430'FNL & 403'FEL,SEC.09)
Area	COLORADO	Well	MEAD 4
Field	WELD COUNTY (NAD83/TRUE NORTH)	Wellbore	MEAD 4 PWB
Facility	SEC.09-T07N-R66W		

TARGETS

Name	MD [ft]	TVD [ft]	North [ft]	East [ft]	Grid East [US ft]	Grid North [US ft]	Latitude	Longitude	Shape
MEAD PAD SECTION 08		0.00	77.99	0.57	3201342.85	1459836.85	40°35'36.208"N	104°46'29.986"W	polygon
MEAD PAD SECTION 09		0.00	77.99	0.57	3201342.85	1459836.85	40°35'36.208"N	104°46'29.986"W	polygon
2) MEAD 4 BHL ON PLAT REV-1 (401'FNL & 460'FWL,SEC.08)	17525.26	7505.00	797.96	-9647.81	3191689.17	1460477.89	40°35'43.303"N	104°48'35.057"W	point
1) MEAD 4 LANDING	7935.15	7505.00	719.56	-58.03	3201279.01	1460477.90	40°35'42.547"N	104°46'30.745"W	point
MEAD PAD NORTH 1/4 HARDLINES		7505.00	77.99	0.57	3201342.85	1459836.85	40°35'36.208"N	104°46'29.986"W	polygon

SURVEY PROGRAM - Ref Wellbore: MEAD 4 PWB Ref Wellpath: MEAD 4 (REV-A.0) PWP

Start MD [ft]	End MD [ft]	Positional Uncertainty Model	Log Name/Comment	Wellbore
24.00	18000.00	NaviTrak (Standard)		MEAD 4 PWB