

# EXTRACTION OIL & GAS

Location: COLORADO Slot: SLOT#03 RANCHO WATER VALLEY 6(531'FNL & 271'FEL,SEC.04)  
Field: WELD COUNTY (NAD83/TRUE NORTH) Well: RANCHO WATER VALLEY 6  
Facility: SEC.04-T05N-R67W Wellbore: RANCHO WATER VALLEY 6 PWB

Plot reference wellpath is RANCHO WATER VALLEY 6 (REV-B.0) PWP

True vertical depths are referenced to RIG (RKB)	Grid System: NAD83 / Lambert Colorado SP, Northern Zone (501), US feet
Measured depths are referenced to RIG (RKB)	North Reference: True north
RIG (RKB) to Mean Sea Level: 4799 feet	Scale: True distance
Mean Sea Level to Mud line (At Slot: SLOT#03 RANCHO WATER VALLEY 6(531'FNL & 271'FEL,SEC.04)): 0 feet	Depths are in feet
Coordinates are in feet referenced to Slot	Created by: painsetr on 7/31/2014

## Location Information

Facility Name	Grid East (US ft)	Grid North (US ft)	Latitude	Longitude
SEC.04-T05N-R67W	3170424.561	1402077.673	40°26'07.764"N	104°53'15.936"W
Slot	Local N (ft)	Local E (ft)	Grid East (US ft)	Grid North (US ft)
SLOT#03 RANCHO WATER VALLEY 6(531'FNL & 271'FEL,SEC.04)	-313.31	-75.16	3170351.566	1401763.864
RIG (RKB) to Mud line (At Slot: SLOT#03 RANCHO WATER VALLEY 6(531'FNL & 271'FEL,SEC.04))				4799ft
Mean Sea Level to Mud line (At Slot: SLOT#03 RANCHO WATER VALLEY 6(531'FNL & 271'FEL,SEC.04))				0ft
RIG (RKB) to Mean Sea Level				4799ft

## Targets

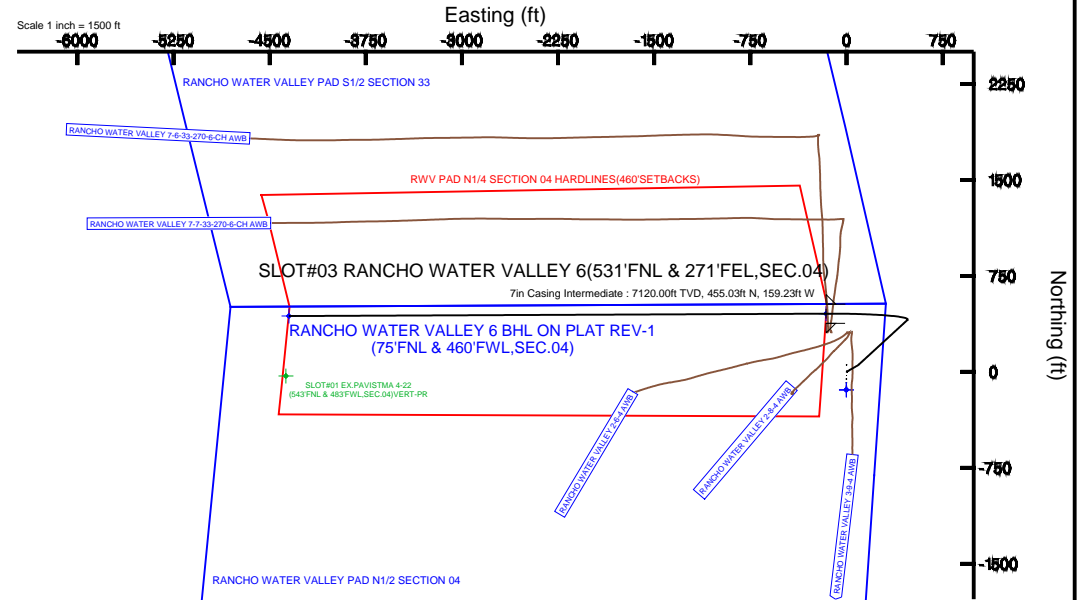
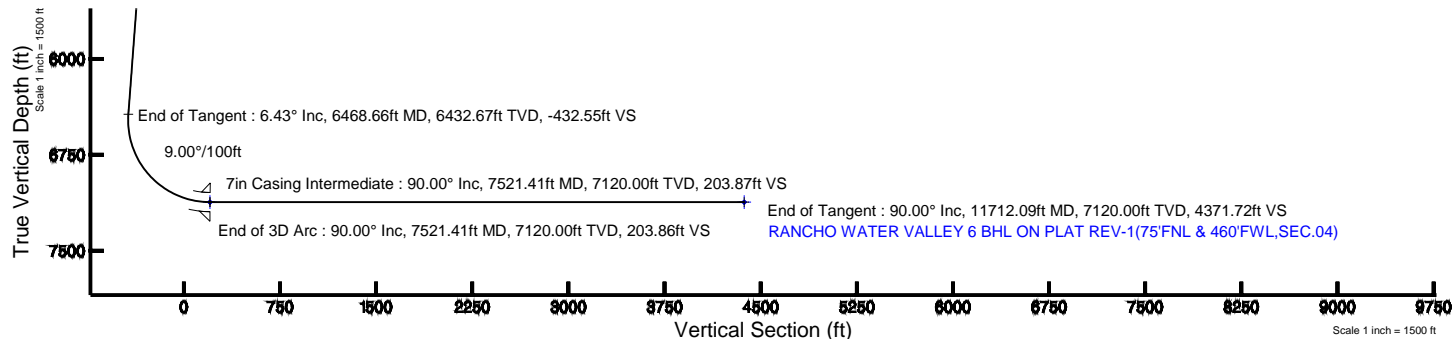
Name	MD (ft)	TVD (ft)	Local N (ft)	Local E (ft)	Grid East (US ft)	Grid North (US ft)	Latitude	Longitude
RANCHO WATER VALLEY PAD N1/2 SECTION 04		0.00	-140.26	-1.11	3170351.42	1401623.60	40°26'03.282"N	104°53'16.922"W
RANCHO WATER VALLEY PAD S1/2 SECTION 33		0.00	-140.26	-1.11	3170351.42	1401623.60	40°26'03.282"N	104°53'16.922"W
RWV PAD N1/4 SECTION 04 HARDLINES(460'SETBACKS)		6780.00	-140.26	-1.11	3170351.42	1401623.60	40°26'03.282"N	104°53'16.922"W
RANCHO WATER VALLEY 6 BHL ON PLAT REV-1(75'FNL & 460'FWL,SEC.04)	11712.09	7120.00	436.47	-4349.88	3165968.95	1402170.29	40°26'08.977"N	104°54'13.162"W
RANCHO WATER VALLEY 6 LANDING	7521.41	7120.00	455.03	-159.23	3170189.21	1402217.77	40°26'08.164"N	104°53'18.967"W

## Survey Program

Start MD (ft)	End MD (ft)	Tool	Model	Log Name/Comment	Wellbore
24.00	13000.00	NaviTrak			RANCHO WATER VALLEY 6 PWB

## Well Profile Data

Design Comment	MD (ft)	Inc (°)	Az (°)	TVD (ft)	Local N (ft)	Local E (ft)	DLS (°/100ft)	VS (ft)
Tie On	24.00	0.000	60.000	24.00	0.00	0.00	0.00	0.00
End of Tangent	850.00	0.000	60.000	850.00	0.00	0.00	0.00	0.00
End of Build	1250.00	8.000	60.000	1248.70	13.94	24.14	2.00	-22.63
End of Tangent	1750.00	8.000	60.000	1743.84	48.73	84.41	0.00	-79.12
End of 3D Arc	1861.03	6.426	47.424	1853.99	56.80	95.68	2.00	-89.53
End of Tangent	6468.66	6.426	47.424	6432.67	405.72	475.43	0.00	-432.55
End of 3D Arc	7521.41	90.000	269.746	7120.00	455.03	-159.23	9.00	203.86
End of Tangent	11712.09	90.000	269.746	7120.00	436.47	-4349.88	0.00	4371.72



BGGM (1945.0 to 2016.0) Dip: 66.95° Field: 52759.7 nT  
Magnetic North is 8.61 degrees East of True North (at 7/2/2014)

To correct azimuth from Magnetic to True add 8.61 degrees



# Planned Wellpath Report

## RANCHO WATER VALLEY 6 (REV-B.0) PWP

Page 1 of 7



REFERENCE WELLPATH IDENTIFICATION			
Operator	EXTRACTION OIL & GAS	Slot	SLOT#03 RANCHO WATER VALLEY 6(531'FNL & 271'FEL,SEC.04)
Area	COLORADO	Well	RANCHO WATER VALLEY 6
Field	WELD COUNTY (NAD83/TRUE NORTH)	Wellbore	RANCHO WATER VALLEY 6 PWB
Facility	SEC.04-T05N-R67W		

REPORT SETUP INFORMATION			
Projection System	NAD83 / Lambert Colorado SP, Northern Zone (501), US feet	Software System	WellArchitect® 4.0.0
North Reference	True	User	Painsetr
Scale	0.999962	Report Generated	7/31/2014 at 9:16:04 AM
Convergence at slot	n/a	Database/Source file	WA_Denver/RANCHO_WATER_VALLEY_6_PWB.xml

WELLPATH LOCATION						
	Local coordinates		Grid coordinates		Geographic coordinates	
	North[ft]	East[ft]	Easting[US ft]	Northing[US ft]	Latitude	Longitude
Slot Location	-313.31	-75.16	3170351.57	1401763.86	40°26'04.668"N	104°53'16.908"W
Facility Reference Pt			3170424.56	1402077.67	40°26'07.764"N	104°53'15.936"W
Field Reference Pt			3185481.27	1419166.81	40°28'55.560"N	104°49'59.556"W

WELLPATH DATUM			
Calculation method	Minimum curvature	RIG (RKB) to Facility Vertical Datum	4799.00ft
Horizontal Reference Pt	Slot	RIG (RKB) to Mean Sea Level	4799.00ft
Vertical Reference Pt	RIG (RKB)	RIG (RKB) to Mud Line at Slot (SLOT#03 RANCHO WATER VALLEY 6(531'FNL & 271'FEL,SEC.04))	4799.00ft
MD Reference Pt	RIG (RKB)	Section Origin	N 0.00, E 0.00 ft
Field Vertical Reference	Mean Sea Level	Section Azimuth	275.73°



# Planned Wellpath Report

## RANCHO WATER VALLEY 6 (REV-B.0) PWP

Page 2 of 7



REFERENCE WELLPATH IDENTIFICATION			
Operator	EXTRACTION OIL & GAS	Slot	SLOT#03 RANCHO WATER VALLEY 6(531'FNL & 271'FEL,SEC.04)
Area	COLORADO	Well	RANCHO WATER VALLEY 6
Field	WELD COUNTY (NAD83/TRUE NORTH)	Wellbore	RANCHO WATER VALLEY 6 PWB
Facility	SEC.04-T05N-R67W		

WELLPATH DATA (125 stations) † = interpolated/extrapolated station								
MD [ft]	Inclination [°]	Azimuth [°]	TVD [ft]	Vert Sect [ft]	North [ft]	East [ft]	DLS [°/100ft]	Comments
0.00†	0.000	60.000	0.00	0.00	0.00	0.00	0.00	
24.00	0.000	60.000	24.00	0.00	0.00	0.00	0.00	Tie On
124.00†	0.000	60.000	124.00	0.00	0.00	0.00	0.00	
224.00†	0.000	60.000	224.00	0.00	0.00	0.00	0.00	
324.00†	0.000	60.000	324.00	0.00	0.00	0.00	0.00	
424.00†	0.000	60.000	424.00	0.00	0.00	0.00	0.00	
524.00†	0.000	60.000	524.00	0.00	0.00	0.00	0.00	
624.00†	0.000	60.000	624.00	0.00	0.00	0.00	0.00	
724.00†	0.000	60.000	724.00	0.00	0.00	0.00	0.00	
824.00†	0.000	60.000	824.00	0.00	0.00	0.00	0.00	
850.00	0.000	60.000	850.00	0.00	0.00	0.00	0.00	End of Tangent
924.00†	1.480	60.000	923.99	-0.78	0.48	0.83	2.00	
1024.00†	3.480	60.000	1023.89	-4.29	2.64	4.57	2.00	
1124.00†	5.480	60.000	1123.58	-10.63	6.55	11.34	2.00	
1224.00†	7.480	60.000	1222.94	-19.79	12.19	21.11	2.00	
1250.00	8.000	60.000	1248.70	-22.63	13.94	24.14	2.00	End of Build
1324.00†	8.000	60.000	1321.98	-30.99	19.09	33.06	0.00	
1424.00†	8.000	60.000	1421.01	-42.29	26.05	45.12	0.00	
1524.00†	8.000	60.000	1520.04	-53.59	33.01	57.17	0.00	
1624.00†	8.000	60.000	1619.06	-64.89	39.97	69.22	0.00	
1724.00†	8.000	60.000	1718.09	-76.18	46.92	81.27	0.00	
1750.00	8.000	60.000	1743.84	-79.12	48.73	84.41	0.00	End of Tangent
1824.00†	6.912	52.242	1817.21	-86.53	54.03	92.39	2.00	
1861.03	6.426	47.424	1853.99	-89.53	56.80	95.68	2.00	End of 3D Arc
1924.00†	6.426	47.424	1916.56	-94.22	61.57	100.87	0.00	
2024.00†	6.426	47.424	2015.94	-101.66	69.14	109.11	0.00	
2124.00†	6.426	47.424	2115.31	-109.10	76.71	117.35	0.00	
2224.00†	6.426	47.424	2214.68	-116.55	84.29	125.59	0.00	
2324.00†	6.426	47.424	2314.05	-123.99	91.86	133.83	0.00	
2424.00†	6.426	47.424	2413.42	-131.44	99.43	142.08	0.00	



# Planned Wellpath Report

## RANCHO WATER VALLEY 6 (REV-B.0) PWP

Page 3 of 7



REFERENCE WELLPATH IDENTIFICATION			
Operator	EXTRACTION OIL & GAS	Slot	SLOT#03 RANCHO WATER VALLEY 6(531'FNL & 271'FEL,SEC.04)
Area	COLORADO	Well	RANCHO WATER VALLEY 6
Field	WELD COUNTY (NAD83/TRUE NORTH)	Wellbore	RANCHO WATER VALLEY 6 PWB
Facility	SEC.04-T05N-R67W		

WELLPATH DATA (125 stations) † = interpolated/extrapolated station								
MD [ft]	Inclination [°]	Azimuth [°]	TVD [ft]	Vert Sect [ft]	North [ft]	East [ft]	DLS [°/100ft]	Comments
2524.00†	6.426	47.424	2512.79	-138.88	107.00	150.32	0.00	
2624.00†	6.426	47.424	2612.17	-146.33	114.58	158.56	0.00	
2724.00†	6.426	47.424	2711.54	-153.77	122.15	166.80	0.00	
2824.00†	6.426	47.424	2810.91	-161.22	129.72	175.04	0.00	
2924.00†	6.426	47.424	2910.28	-168.66	137.29	183.28	0.00	
3024.00†	6.426	47.424	3009.65	-176.11	144.87	191.53	0.00	
3124.00†	6.426	47.424	3109.02	-183.55	152.44	199.77	0.00	
3224.00†	6.426	47.424	3208.40	-191.00	160.01	208.01	0.00	
3324.00†	6.426	47.424	3307.77	-198.44	167.59	216.25	0.00	
3424.00†	6.426	47.424	3407.14	-205.88	175.16	224.49	0.00	
3524.00†	6.426	47.424	3506.51	-213.33	182.73	232.74	0.00	
3624.00†	6.426	47.424	3605.88	-220.77	190.30	240.98	0.00	
3724.00†	6.426	47.424	3705.25	-228.22	197.88	249.22	0.00	
3824.00†	6.426	47.424	3804.63	-235.66	205.45	257.46	0.00	
3924.00†	6.426	47.424	3904.00	-243.11	213.02	265.70	0.00	
4024.00†	6.426	47.424	4003.37	-250.55	220.59	273.95	0.00	
4124.00†	6.426	47.424	4102.74	-258.00	228.17	282.19	0.00	
4224.00†	6.426	47.424	4202.11	-265.44	235.74	290.43	0.00	
4324.00†	6.426	47.424	4301.48	-272.89	243.31	298.67	0.00	
4424.00†	6.426	47.424	4400.86	-280.33	250.88	306.91	0.00	
4524.00†	6.426	47.424	4500.23	-287.78	258.46	315.15	0.00	
4624.00†	6.426	47.424	4599.60	-295.22	266.03	323.40	0.00	
4724.00†	6.426	47.424	4698.97	-302.67	273.60	331.64	0.00	
4824.00†	6.426	47.424	4798.34	-310.11	281.17	339.88	0.00	
4924.00†	6.426	47.424	4897.71	-317.55	288.75	348.12	0.00	
5024.00†	6.426	47.424	4997.09	-325.00	296.32	356.36	0.00	
5124.00†	6.426	47.424	5096.46	-332.44	303.89	364.61	0.00	
5224.00†	6.426	47.424	5195.83	-339.89	311.46	372.85	0.00	
5324.00†	6.426	47.424	5295.20	-347.33	319.04	381.09	0.00	
5424.00†	6.426	47.424	5394.57	-354.78	326.61	389.33	0.00	



# Planned Wellpath Report

## RANCHO WATER VALLEY 6 (REV-B.0) PWP

Page 4 of 7



### REFERENCE WELLPATH IDENTIFICATION

Operator	EXTRACTION OIL & GAS	Slot	SLOT#03 RANCHO WATER VALLEY 6(531'FNL & 271'FEL,SEC.04)
Area	COLORADO	Well	RANCHO WATER VALLEY 6
Field	WELD COUNTY (NAD83/TRUE NORTH)	Wellbore	RANCHO WATER VALLEY 6 PWB
Facility	SEC.04-T05N-R67W		

### WELLPATH DATA (125 stations) † = interpolated/extrapolated station

MD [ft]	Inclination [°]	Azimuth [°]	TVD [ft]	Vert Sect [ft]	North [ft]	East [ft]	DLS [°/100ft]	Comments
5524.00†	6.426	47.424	5493.94	-362.22	334.18	397.57	0.00	
5624.00†	6.426	47.424	5593.32	-369.67	341.75	405.82	0.00	
5724.00†	6.426	47.424	5692.69	-377.11	349.33	414.06	0.00	
5824.00†	6.426	47.424	5792.06	-384.56	356.90	422.30	0.00	
5924.00†	6.426	47.424	5891.43	-392.00	364.47	430.54	0.00	
6024.00†	6.426	47.424	5990.80	-399.45	372.04	438.78	0.00	
6124.00†	6.426	47.424	6090.17	-406.89	379.62	447.02	0.00	
6224.00†	6.426	47.424	6189.55	-414.34	387.19	455.27	0.00	
6324.00†	6.426	47.424	6288.92	-421.78	394.76	463.51	0.00	
6424.00†	6.426	47.424	6388.29	-429.22	402.33	471.75	0.00	
6468.66	6.426	47.424	6432.67	-432.55	405.72	475.43	0.00	End of Tangent
6524.00†	4.343	356.661	6487.79	-434.28	409.91	477.59	9.00	
6624.00†	10.193	294.692	6587.06	-425.30	417.40	469.31	9.00	
6724.00†	18.725	282.674	6683.83	-400.94	424.63	445.57	9.00	
6824.00†	27.551	278.105	6775.70	-361.82	431.43	406.93	9.00	
6924.00†	36.457	275.638	6860.42	-308.90	437.62	354.36	9.00	
7024.00†	45.396	274.036	6935.90	-243.47	443.05	289.15	9.00	
7124.00†	54.352	272.864	7000.28	-167.15	447.60	212.90	9.00	
7224.00†	63.316	271.931	7051.98	-81.82	451.14	127.49	9.00	
7324.00†	72.286	271.134	7089.73	10.43	453.59	35.04	9.00	
7424.00†	81.259	270.414	7112.58	107.31	454.90	-62.20	9.00	
7521.41	90.000	269.746	7120.00 <sup>1</sup>	203.86	455.03	-159.23	9.00	End of 3D Arc
7524.00†	90.000	269.746	7120.00	206.44	455.02	-161.82	0.00	
7624.00†	90.000	269.746	7120.00	305.90	454.57	-261.82	0.00	
7724.00†	90.000	269.746	7120.00	405.36	454.13	-361.82	0.00	
7824.00†	90.000	269.746	7120.00	504.81	453.69	-461.82	0.00	
7924.00†	90.000	269.746	7120.00	604.27	453.25	-561.82	0.00	
8024.00†	90.000	269.746	7120.00	703.72	452.80	-661.82	0.00	
8124.00†	90.000	269.746	7120.00	803.18	452.36	-761.82	0.00	
8224.00†	90.000	269.746	7120.00	902.63	451.92	-861.82	0.00	



# Planned Wellpath Report

## RANCHO WATER VALLEY 6 (REV-B.0) PWP

Page 5 of 7



### REFERENCE WELLPATH IDENTIFICATION

Operator	EXTRACTION OIL & GAS	Slot	SLOT#03 RANCHO WATER VALLEY 6(531'FNL & 271'FEL,SEC.04)
Area	COLORADO	Well	RANCHO WATER VALLEY 6
Field	WELD COUNTY (NAD83/TRUE NORTH)	Wellbore	RANCHO WATER VALLEY 6 PWB
Facility	SEC.04-T05N-R67W		

### WELLPATH DATA (125 stations) † = interpolated/extrapolated station

MD [ft]	Inclination [°]	Azimuth [°]	TVD [ft]	Vert Sect [ft]	North [ft]	East [ft]	DLS [°/100ft]	Comments
8324.00†	90.000	269.746	7120.00	1002.09	451.47	-961.82	0.00	
8424.00†	90.000	269.746	7120.00	1101.54	451.03	-1061.82	0.00	
8524.00†	90.000	269.746	7120.00	1201.00	450.59	-1161.82	0.00	
8624.00†	90.000	269.746	7120.00	1300.45	450.15	-1261.81	0.00	
8724.00†	90.000	269.746	7120.00	1399.91	449.70	-1361.81	0.00	
8824.00†	90.000	269.746	7120.00	1499.36	449.26	-1461.81	0.00	
8924.00†	90.000	269.746	7120.00	1598.82	448.82	-1561.81	0.00	
9024.00†	90.000	269.746	7120.00	1698.27	448.37	-1661.81	0.00	
9124.00†	90.000	269.746	7120.00	1797.73	447.93	-1761.81	0.00	
9224.00†	90.000	269.746	7120.00	1897.18	447.49	-1861.81	0.00	
9324.00†	90.000	269.746	7120.00	1996.64	447.04	-1961.81	0.00	
9424.00†	90.000	269.746	7120.00	2096.09	446.60	-2061.81	0.00	
9524.00†	90.000	269.746	7120.00	2195.55	446.16	-2161.81	0.00	
9624.00†	90.000	269.746	7120.00	2295.00	445.72	-2261.80	0.00	
9724.00†	90.000	269.746	7120.00	2394.46	445.27	-2361.80	0.00	
9824.00†	90.000	269.746	7120.00	2493.91	444.83	-2461.80	0.00	
9924.00†	90.000	269.746	7120.00	2593.37	444.39	-2561.80	0.00	
10024.00†	90.000	269.746	7120.00	2692.82	443.94	-2661.80	0.00	
10124.00†	90.000	269.746	7120.00	2792.28	443.50	-2761.80	0.00	
10224.00†	90.000	269.746	7120.00	2891.73	443.06	-2861.80	0.00	
10324.00†	90.000	269.746	7120.00	2991.19	442.62	-2961.80	0.00	
10424.00†	90.000	269.746	7120.00	3090.64	442.17	-3061.80	0.00	
10524.00†	90.000	269.746	7120.00	3190.10	441.73	-3161.80	0.00	
10624.00†	90.000	269.746	7120.00	3289.55	441.29	-3261.79	0.00	
10724.00†	90.000	269.746	7120.00	3389.01	440.84	-3361.79	0.00	
10824.00†	90.000	269.746	7120.00	3488.47	440.40	-3461.79	0.00	
10924.00†	90.000	269.746	7120.00	3587.92	439.96	-3561.79	0.00	
11024.00†	90.000	269.746	7120.00	3687.38	439.52	-3661.79	0.00	
11124.00†	90.000	269.746	7120.00	3786.83	439.07	-3761.79	0.00	
11224.00†	90.000	269.746	7120.00	3886.29	438.63	-3861.79	0.00	



# Planned Wellpath Report

## RANCHO WATER VALLEY 6 (REV-B.0) PWP

Page 6 of 7



### REFERENCE WELLPATH IDENTIFICATION

Operator	EXTRACTION OIL & GAS	Slot	SLOT#03 RANCHO WATER VALLEY 6(531'FNL & 271'FEL,SEC.04)
Area	COLORADO	Well	RANCHO WATER VALLEY 6
Field	WELD COUNTY (NAD83/TRUE NORTH)	Wellbore	RANCHO WATER VALLEY 6 PWB
Facility	SEC.04-T05N-R67W		

### WELLPATH DATA (125 stations) † = interpolated/extrapolated station

MD [ft]	Inclination [°]	Azimuth [°]	TVD [ft]	Vert Sect [ft]	North [ft]	East [ft]	DLS [°/100ft]	Comments
11324.00†	90.000	269.746	7120.00	3985.74	438.19	-3961.79	0.00	
11424.00†	90.000	269.746	7120.00	4085.20	437.74	-4061.79	0.00	
11524.00†	90.000	269.746	7120.00	4184.65	437.30	-4161.79	0.00	
11624.00†	90.000	269.746	7120.00	4284.11	436.86	-4261.78	0.00	
11712.09	90.000	269.746	7120.00 <sup>2</sup>	4371.72	436.47	-4349.88	0.00	End of Tangent

### HOLE & CASING SECTIONS -

Ref Wellbore: RANCHO WATER VALLEY 6 PWB      Ref Wellpath: RANCHO WATER VALLEY 6 (REV-B.0) PWP

String/Diameter	Start MD [ft]	End MD [ft]	Interval [ft]	Start TVD [ft]	End TVD [ft]	Start N/S [ft]	Start E/W [ft]	End N/S [ft]	End E/W [ft]
7in Casing Intermediate	24.00	7521.41	7497.41	24.00	7120.00	0.00	0.00	455.03	-159.23



# Planned Wellpath Report

## RANCHO WATER VALLEY 6 (REV-B.0) PWP

Page 7 of 7



REFERENCE WELLPATH IDENTIFICATION			
Operator	EXTRACTION OIL & GAS	Slot	SLOT#03 RANCHO WATER VALLEY 6(531'FNL & 271'FEL,SEC.04)
Area	COLORADO	Well	RANCHO WATER VALLEY 6
Field	WELD COUNTY (NAD83/TRUE NORTH)	Wellbore	RANCHO WATER VALLEY 6 PWB
Facility	SEC.04-T05N-R67W		

TARGETS									
Name	MD [ft]	TVD [ft]	North [ft]	East [ft]	Grid East [US ft]	Grid North [US ft]	Latitude	Longitude	Shape
RANCHO WATER VALLEY PAD N1/2 SECTION 04		0.00	-140.26	-1.11	3170351.42	1401623.60	40°26'03.282"N	104°53'16.922"W	polygon
RANCHO WATER VALLEY PAD S1/2 SECTION 33		0.00	-140.26	-1.11	3170351.42	1401623.60	40°26'03.282"N	104°53'16.922"W	polygon
RWV PAD N1/4 SECTION 04 HARDLINES(460'SETBACKS)		6780.00	-140.26	-1.11	3170351.42	1401623.60	40°26'03.282"N	104°53'16.922"W	polygon
2) RANCHO WATER VALLEY 6 BHL ON PLAT REV-1(75'FNL & 460'FWL,SEC.04)	11712.09	7120.00	436.47	-4349.88	3165998.95	1402170.29	40°26'08.977"N	104°54'13.162"W	point
1) RANCHO WATER VALLEY 6 LANDING	7521.41	7120.00	455.03	-159.23	3170189.21	1402217.77	40°26'09.164"N	104°53'18.967"W	point

SURVEY PROGRAM - Ref Wellbore: RANCHO WATER VALLEY 6 PWB Ref Wellpath: RANCHO WATER VALLEY 6 (REV-B.0) PWP				
Start MD [ft]	End MD [ft]	Positional Uncertainty Model	Log Name/Comment	Wellbore
24.00	13000.00	NaviTrak (Standard)		RANCHO WATER VALLEY 6 PWB