

EXTRACTION OIL & GAS

Location: COLORADO Slot: SLOT#01 RANCHO WATER VALLEY 4(559'FNL & 269'FEL,SEC.04)
Field: WELD COUNTY (NAD83/TRUE NORTH) Well: RANCHO WATER VALLEY 4
Facility: SEC.04-T05N-R67W Wellbore: RANCHO WATER VALLEY 4 PWB

Plot reference wellpath is RANCHO WATER VALLEY 4 (REV-B.0) PWP

True vertical depths are referenced to RIG (RKB)	Grid System: NAD83 / Lambert Colorado SP, Northern Zone (501), US feet
Measured depths are referenced to RIG (RKB)	North Reference: True north
RIG (RKB) to Mean Sea Level: 4799 feet	Scale: True distance
Mean Sea Level to Mud line (At Slot: SLOT#01 RANCHO WATER VALLEY 4(559'FNL & 269'FEL,SEC.04)) 0 feet	Depths are in feet
Coordinates are in feet referenced to Slot	Created by: painsear on 7/31/2014

Location Information

Facility Name			Grid East (US ft)	Grid North (US ft)	Latitude	Longitude
SEC.04-T05N-R67W			3170424.561	1402077.673	40°26'07.764"N	104°53'15.936"W
Slot	Local N (ft)	Local E (ft)	Grid East (US ft)	Grid North (US ft)	Latitude	Longitude
SLOT#01 RANCHO WATER VALLEY 4(559FNL & 269FEL,SEC.04)	-341.36	-75.44	3170351.481	1401735.812	40°26'04.391"N	104°53'16.912"W
RIG (RKB) to Mud line (At Slot: SLOT#01 RANCHO WATER VALLEY 4(559FNL & 269FEL,SEC.04))					4799ft	
Mean Sea Level to Mud line (At Slot: SLOT#01 RANCHO WATER VALLEY 4(559FNL & 269FEL,SEC.04))					0ft	
RIG (RKB) to Mean Sea Level					4799ft	

Targets

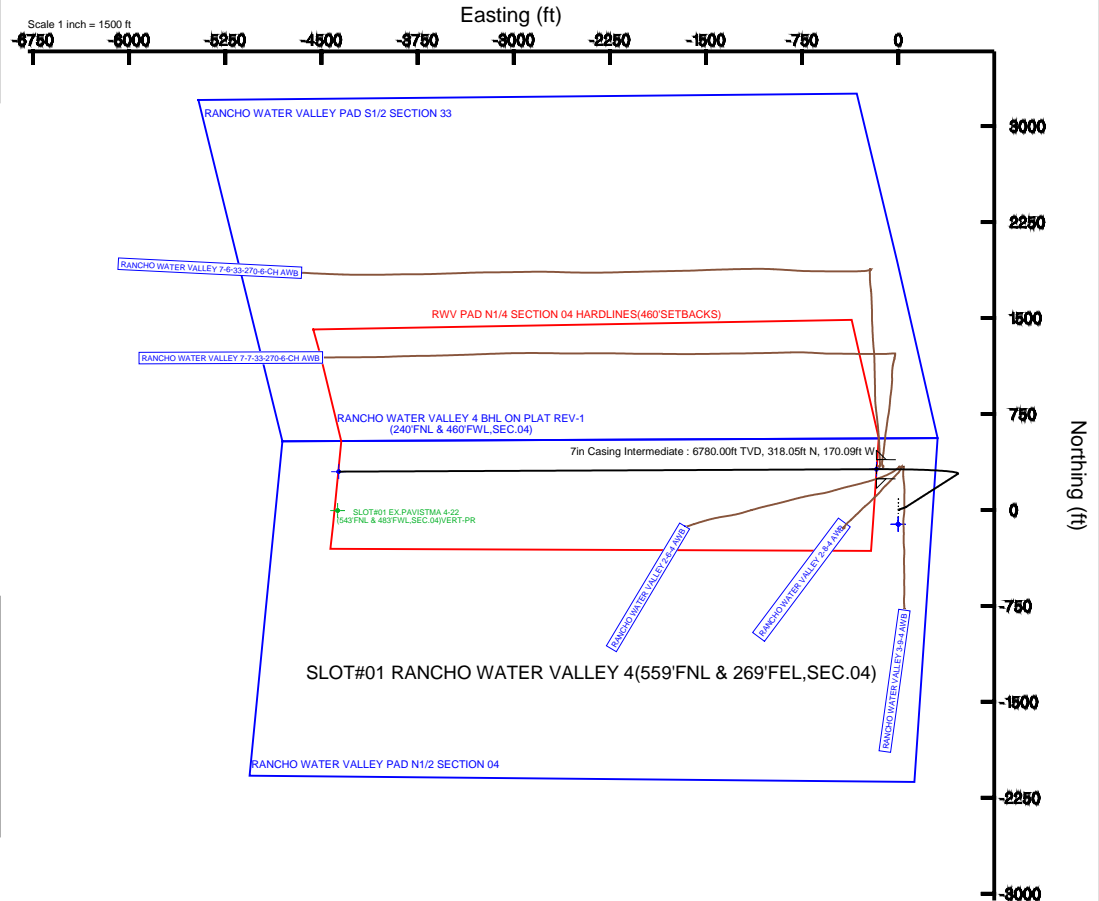
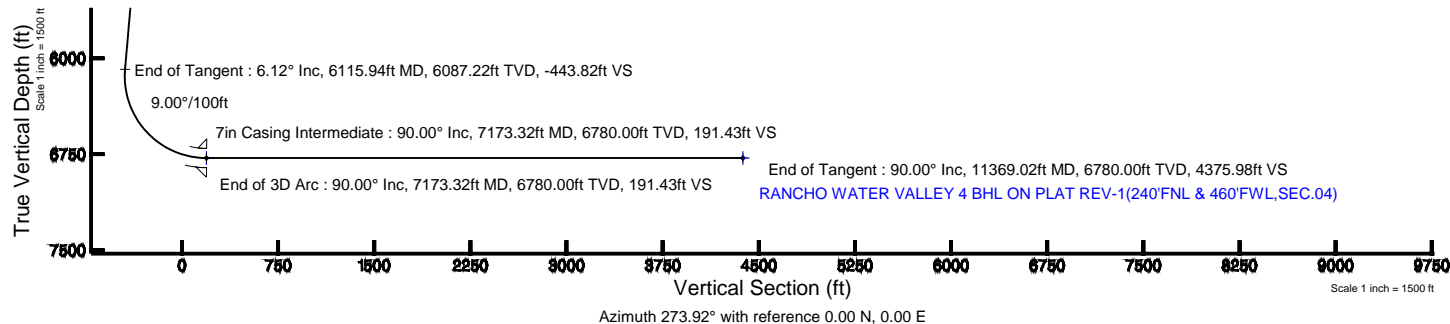
Name	MD (ft)	TVD (ft)	Local N (ft)	Local E (ft)	Grid East (US ft)	Grid North (US ft)	Latitude	Longitude
RANCHO WATER VALLEY PAD N1/2 SECTION 04		0.00	-112.21	-0.84	3170251.42	1401623.60	40°28'03.282"N	104°53'16.922"W
RANCHO WATER VALLEY PAD S1/2 SECTION 33		0.00	-112.21	-0.84	3170351.42	1401623.60	40°28'03.282"N	104°53'16.922"W
RANCHO WATER VALLEY 4 BHL ON PLAT REV-1(240'FNL & 460'FWL,SEC.04)	11369.02	6780.00	299.12	-4365.74	3165983.95	1402004.79	40°28'07.342"N	104°54'13.370"W
RANCHO WATER VALLEY 4 LANDING	7173.32	6780.00	318.05	-170.09	3170179.21	1402052.66	40°28'07.534"N	104°53'19.111"W
RWW PAD N1/2 SECTION 04 HARDLINES(460'SETBACKS)		6780.00	-112.21	-0.84	3170351.42	1401623.60	40°28'03.282"N	104°53'16.922"W
RWW PAD N1/4 SECTION 04 HARDLINES(460'SETBACKS)		6780.00	-112.21	-0.84	3170351.42	1401623.60	40°28'03.282"N	104°53'16.922"W

Survey Program

Start MD (ft)	End MD (ft)	Tool	Model	Log Name/Comment	Wellbore
24.00	13000.00	NaviTrak	NaviTrak (Standard)		RANCHO WATER VALLEY 4 PWB

Well Profile Data

Design Comment	MD (ft)	Inc (°)	Az (°)	TVD (ft)	Local N (ft)	Local E (ft)	DLS (°/100ft)	VS (ft)
Tie On	24.00	0.000	70.000	24.00	0.00	0.00	0.00	0.00
End of Tangent	850.00	0.000	70.000	850.00	0.00	0.00	0.00	0.00
End of Build	1150.00	6.000	70.000	1149.45	5.37	14.75	2.00	-14.35
End of Tangent	1550.00	6.000	70.000	1547.26	19.67	54.04	0.00	-52.57
End of 3D Arc	1616.69	6.117	57.385	1613.58	22.78	60.31	2.00	-58.61
End of Tangent	6115.94	6.117	57.385	6087.22	281.17	464.12	0.00	-443.82
End of 3D Arc	7173.32	90.000	269.742	6780.00	318.05	-170.09	9.00	191.43
End of Tangent	11369.02	90.000	269.742	6780.00	299.12	-4365.74	0.00	4375.98



BGGM (1945.0 to 2016.0) Dip: 66.95° Field: 52759.7 nT
Magnetic North is 8.61 degrees East of True North (at 7/2/2014)

To correct azimuth from Magnetic to True add 8.61 degrees



Planned Wellpath Report

RANCHO WATER VALLEY 4 (REV-B.0) PWP

Page 1 of 7



REFERENCE WELLPATH IDENTIFICATION			
Operator	EXTRACTION OIL & GAS	Slot	SLOT#01 RANCHO WATER VALLEY 4(559'FNL & 269'FEL,SEC.04)
Area	COLORADO	Well	RANCHO WATER VALLEY 4
Field	WELD COUNTY (NAD83/TRUE NORTH)	Wellbore	RANCHO WATER VALLEY 4 PWB
Facility	SEC.04-T05N-R67W		

REPORT SETUP INFORMATION			
Projection System	NAD83 / Lambert Colorado SP, Northern Zone (501), US feet	Software System	WellArchitect® 4.0.0
North Reference	True	User	Painsetr
Scale	0.999962	Report Generated	7/31/2014 at 8:59:38 AM
Convergence at slot	n/a	Database/Source file	WA_Denver/RANCHO_WATER_VALLEY_4_PWB.xml

WELLPATH LOCATION						
	Local coordinates		Grid coordinates		Geographic coordinates	
	North[ft]	East[ft]	Easting[US ft]	Northing[US ft]	Latitude	Longitude
Slot Location	-341.36	-75.44	3170351.48	1401735.81	40°26'04.391"N	104°53'16.912"W
Facility Reference Pt			3170424.56	1402077.67	40°26'07.764"N	104°53'15.936"W
Field Reference Pt			3185481.27	1419166.81	40°28'55.560"N	104°49'59.556"W

WELLPATH DATUM			
Calculation method	Minimum curvature	RIG (RKB) to Facility Vertical Datum	4799.00ft
Horizontal Reference Pt	Slot	RIG (RKB) to Mean Sea Level	4799.00ft
Vertical Reference Pt	RIG (RKB)	RIG (RKB) to Mud Line at Slot (SLOT#01 RANCHO WATER VALLEY 4(559'FNL & 269'FEL,SEC.04))	4799.00ft
MD Reference Pt	RIG (RKB)	Section Origin	N 0.00, E 0.00 ft
Field Vertical Reference	Mean Sea Level	Section Azimuth	273.92°



Planned Wellpath Report

RANCHO WATER VALLEY 4 (REV-B.0) PWP

Page 2 of 7



REFERENCE WELLPATH IDENTIFICATION			
Operator	EXTRACTION OIL & GAS	Slot	SLOT#01 RANCHO WATER VALLEY 4(559'FNL & 269'FEL,SEC.04)
Area	COLORADO	Well	RANCHO WATER VALLEY 4
Field	WELD COUNTY (NAD83/TRUE NORTH)	Wellbore	RANCHO WATER VALLEY 4 PWB
Facility	SEC.04-T05N-R67W		

WELLPATH DATA (122 stations) † = interpolated/extrapolated station								
MD [ft]	Inclination [°]	Azimuth [°]	TVD [ft]	Vert Sect [ft]	North [ft]	East [ft]	DLS [°/100ft]	Comments
0.00†	0.000	70.000	0.00	0.00	0.00	0.00	0.00	
24.00	0.000	70.000	24.00	0.00	0.00	0.00	0.00	Tie On
124.00†	0.000	70.000	124.00	0.00	0.00	0.00	0.00	
224.00†	0.000	70.000	224.00	0.00	0.00	0.00	0.00	
324.00†	0.000	70.000	324.00	0.00	0.00	0.00	0.00	
424.00†	0.000	70.000	424.00	0.00	0.00	0.00	0.00	
524.00†	0.000	70.000	524.00	0.00	0.00	0.00	0.00	
624.00†	0.000	70.000	624.00	0.00	0.00	0.00	0.00	
724.00†	0.000	70.000	724.00	0.00	0.00	0.00	0.00	
824.00†	0.000	70.000	824.00	0.00	0.00	0.00	0.00	
850.00	0.000	70.000	850.00	0.00	0.00	0.00	0.00	End of Tangent
924.00†	1.480	70.000	923.99	-0.87	0.33	0.90	2.00	
1024.00†	3.480	70.000	1023.89	-4.83	1.81	4.96	2.00	
1124.00†	5.480	70.000	1123.58	-11.97	4.48	12.30	2.00	
1150.00	6.000	70.000	1149.45	-14.35	5.37	14.75	2.00	End of Build
1224.00†	6.000	70.000	1223.05	-21.42	8.01	22.02	0.00	
1324.00†	6.000	70.000	1322.50	-30.97	11.59	31.84	0.00	
1424.00†	6.000	70.000	1421.95	-40.53	15.16	41.66	0.00	
1524.00†	6.000	70.000	1521.40	-50.08	18.74	51.48	0.00	
1550.00	6.000	70.000	1547.26	-52.57	19.67	54.04	0.00	End of Tangent
1616.69	6.117	57.385	1613.58	-58.61	22.78	60.31	2.00	End of 3D Arc
1624.00†	6.117	57.385	1620.85	-59.23	23.20	60.96	0.00	
1724.00†	6.117	57.385	1720.28	-67.79	28.94	69.94	0.00	
1824.00†	6.117	57.385	1819.71	-76.36	34.68	78.91	0.00	
1924.00†	6.117	57.385	1919.14	-84.92	40.42	87.89	0.00	
2024.00†	6.117	57.385	2018.57	-93.48	46.17	96.86	0.00	
2124.00†	6.117	57.385	2118.00	-102.04	51.91	105.84	0.00	
2224.00†	6.117	57.385	2217.43	-110.60	57.65	114.81	0.00	
2324.00†	6.117	57.385	2316.86	-119.16	63.40	123.79	0.00	
2424.00†	6.117	57.385	2416.30	-127.73	69.14	132.76	0.00	



Planned Wellpath Report

RANCHO WATER VALLEY 4 (REV-B.0) PWP

Page 3 of 7



REFERENCE WELLPATH IDENTIFICATION			
Operator	EXTRACTION OIL & GAS	Slot	SLOT#01 RANCHO WATER VALLEY 4(559'FNL & 269'FEL,SEC.04)
Area	COLORADO	Well	RANCHO WATER VALLEY 4
Field	WELD COUNTY (NAD83/TRUE NORTH)	Wellbore	RANCHO WATER VALLEY 4 PWB
Facility	SEC.04-T05N-R67W		

WELLPATH DATA (122 stations) † = interpolated/extrapolated station								
MD [ft]	Inclination [°]	Azimuth [°]	TVD [ft]	Vert Sect [ft]	North [ft]	East [ft]	DLS [°/100ft]	Comments
2524.00†	6.117	57.385	2515.73	-136.29	74.88	141.74	0.00	
2624.00†	6.117	57.385	2615.16	-144.85	80.63	150.71	0.00	
2724.00†	6.117	57.385	2714.59	-153.41	86.37	159.69	0.00	
2824.00†	6.117	57.385	2814.02	-161.97	92.11	168.66	0.00	
2924.00†	6.117	57.385	2913.45	-170.53	97.86	177.64	0.00	
3024.00†	6.117	57.385	3012.88	-179.10	103.60	186.61	0.00	
3124.00†	6.117	57.385	3112.31	-187.66	109.34	195.59	0.00	
3224.00†	6.117	57.385	3211.74	-196.22	115.09	204.56	0.00	
3324.00†	6.117	57.385	3311.17	-204.78	120.83	213.54	0.00	
3424.00†	6.117	57.385	3410.60	-213.34	126.57	222.51	0.00	
3524.00†	6.117	57.385	3510.03	-221.90	132.31	231.49	0.00	
3624.00†	6.117	57.385	3609.46	-230.47	138.06	240.46	0.00	
3724.00†	6.117	57.385	3708.89	-239.03	143.80	249.44	0.00	
3824.00†	6.117	57.385	3808.32	-247.59	149.54	258.42	0.00	
3924.00†	6.117	57.385	3907.76	-256.15	155.29	267.39	0.00	
4024.00†	6.117	57.385	4007.19	-264.71	161.03	276.37	0.00	
4124.00†	6.117	57.385	4106.62	-273.27	166.77	285.34	0.00	
4224.00†	6.117	57.385	4206.05	-281.83	172.52	294.32	0.00	
4324.00†	6.117	57.385	4305.48	-290.40	178.26	303.29	0.00	
4424.00†	6.117	57.385	4404.91	-298.96	184.00	312.27	0.00	
4524.00†	6.117	57.385	4504.34	-307.52	189.75	321.24	0.00	
4624.00†	6.117	57.385	4603.77	-316.08	195.49	330.22	0.00	
4724.00†	6.117	57.385	4703.20	-324.64	201.23	339.19	0.00	
4824.00†	6.117	57.385	4802.63	-333.20	206.98	348.17	0.00	
4924.00†	6.117	57.385	4902.06	-341.77	212.72	357.14	0.00	
5024.00†	6.117	57.385	5001.49	-350.33	218.46	366.12	0.00	
5124.00†	6.117	57.385	5100.92	-358.89	224.21	375.09	0.00	
5224.00†	6.117	57.385	5200.35	-367.45	229.95	384.07	0.00	
5324.00†	6.117	57.385	5299.79	-376.01	235.69	393.04	0.00	
5424.00†	6.117	57.385	5399.22	-384.57	241.43	402.02	0.00	



Planned Wellpath Report

RANCHO WATER VALLEY 4 (REV-B.0) PWP

Page 4 of 7



REFERENCE WELLPATH IDENTIFICATION

Operator	EXTRACTION OIL & GAS	Slot	SLOT#01 RANCHO WATER VALLEY 4(559'FNL & 269'FEL,SEC.04)
Area	COLORADO	Well	RANCHO WATER VALLEY 4
Field	WELD COUNTY (NAD83/TRUE NORTH)	Wellbore	RANCHO WATER VALLEY 4 PWB
Facility	SEC.04-T05N-R67W		

WELLPATH DATA (122 stations) † = interpolated/extrapolated station

MD [ft]	Inclination [°]	Azimuth [°]	TVD [ft]	Vert Sect [ft]	North [ft]	East [ft]	DLS [°/100ft]	Comments
5524.00†	6.117	57.385	5498.65	-393.14	247.18	410.99	0.00	
5624.00†	6.117	57.385	5598.08	-401.70	252.92	419.97	0.00	
5724.00†	6.117	57.385	5697.51	-410.26	258.66	428.94	0.00	
5824.00†	6.117	57.385	5796.94	-418.82	264.41	437.92	0.00	
5924.00†	6.117	57.385	5896.37	-427.38	270.15	446.89	0.00	
6024.00†	6.117	57.385	5995.80	-435.94	275.89	455.87	0.00	
6115.94	6.117	57.385	6087.22	-443.82	281.17	464.12	0.00	End of Tangent
6124.00†	5.519	53.329	6095.24	-444.45	281.64	464.79	9.00	
6224.00†	5.618	305.410	6194.97	-443.93	287.36	464.66	9.00	
6324.00†	13.946	283.095	6293.46	-427.83	292.93	448.90	9.00	
6424.00†	22.786	277.589	6388.28	-396.54	298.23	417.91	9.00	
6524.00†	31.714	275.067	6477.09	-350.85	303.12	372.44	9.00	
6624.00†	40.671	273.569	6557.71	-291.86	307.48	313.61	9.00	
6724.00†	49.641	272.535	6628.16	-221.04	311.20	242.88	9.00	
6824.00†	58.619	271.746	6686.70	-140.13	314.19	161.99	9.00	
6924.00†	67.600	271.096	6731.88	-51.12	316.38	72.92	9.00	
7024.00†	76.584	270.525	6762.60	43.80	317.72	-22.13	9.00	
7124.00†	85.569	269.996	6778.09	142.28	318.16	-120.82	9.00	
7173.32	90.000	269.742	6780.00 [†]	191.43	318.05	-170.09	9.00	End of 3D Arc
7224.00†	90.000	269.742	6780.00	241.98	317.82	-220.77	0.00	
7324.00†	90.000	269.742	6780.00	341.71	317.37	-320.77	0.00	
7424.00†	90.000	269.742	6780.00	441.44	316.92	-420.77	0.00	
7524.00†	90.000	269.742	6780.00	541.18	316.47	-520.76	0.00	
7624.00†	90.000	269.742	6780.00	640.91	316.01	-620.76	0.00	
7724.00†	90.000	269.742	6780.00	740.65	315.56	-720.76	0.00	
7824.00†	90.000	269.742	6780.00	840.38	315.11	-820.76	0.00	
7924.00†	90.000	269.742	6780.00	940.12	314.66	-920.76	0.00	
8024.00†	90.000	269.742	6780.00	1039.85	314.21	-1020.76	0.00	
8124.00†	90.000	269.742	6780.00	1139.58	313.76	-1120.76	0.00	
8224.00†	90.000	269.742	6780.00	1239.32	313.31	-1220.76	0.00	



Planned Wellpath Report

RANCHO WATER VALLEY 4 (REV-B.0) PWP

Page 5 of 7



REFERENCE WELLPATH IDENTIFICATION

Operator	EXTRACTION OIL & GAS	Slot	SLOT#01 RANCHO WATER VALLEY 4(559'FNL & 269'FEL,SEC.04)
Area	COLORADO	Well	RANCHO WATER VALLEY 4
Field	WELD COUNTY (NAD83/TRUE NORTH)	Wellbore	RANCHO WATER VALLEY 4 PWB
Facility	SEC.04-T05N-R67W		

WELLPATH DATA (122 stations) † = interpolated/extrapolated station

MD [ft]	Inclination [°]	Azimuth [°]	TVD [ft]	Vert Sect [ft]	North [ft]	East [ft]	DLS [°/100ft]	Comments
8324.00†	90.000	269.742	6780.00	1339.05	312.86	-1320.76	0.00	
8424.00†	90.000	269.742	6780.00	1438.79	312.41	-1420.76	0.00	
8524.00†	90.000	269.742	6780.00	1538.52	311.96	-1520.75	0.00	
8624.00†	90.000	269.742	6780.00	1638.26	311.50	-1620.75	0.00	
8724.00†	90.000	269.742	6780.00	1737.99	311.05	-1720.75	0.00	
8824.00†	90.000	269.742	6780.00	1837.72	310.60	-1820.75	0.00	
8924.00†	90.000	269.742	6780.00	1937.46	310.15	-1920.75	0.00	
9024.00†	90.000	269.742	6780.00	2037.19	309.70	-2020.75	0.00	
9124.00†	90.000	269.742	6780.00	2136.93	309.25	-2120.75	0.00	
9224.00†	90.000	269.742	6780.00	2236.66	308.80	-2220.75	0.00	
9324.00†	90.000	269.742	6780.00	2336.40	308.35	-2320.75	0.00	
9424.00†	90.000	269.742	6780.00	2436.13	307.90	-2420.75	0.00	
9524.00†	90.000	269.742	6780.00	2535.86	307.45	-2520.74	0.00	
9624.00†	90.000	269.742	6780.00	2635.60	306.99	-2620.74	0.00	
9724.00†	90.000	269.742	6780.00	2735.33	306.54	-2720.74	0.00	
9824.00†	90.000	269.742	6780.00	2835.07	306.09	-2820.74	0.00	
9924.00†	90.000	269.742	6780.00	2934.80	305.64	-2920.74	0.00	
10024.00†	90.000	269.742	6780.00	3034.54	305.19	-3020.74	0.00	
10124.00†	90.000	269.742	6780.00	3134.27	304.74	-3120.74	0.00	
10224.00†	90.000	269.742	6780.00	3234.00	304.29	-3220.74	0.00	
10324.00†	90.000	269.742	6780.00	3333.74	303.84	-3320.74	0.00	
10424.00†	90.000	269.742	6780.00	3433.47	303.39	-3420.73	0.00	
10524.00†	90.000	269.742	6780.00	3533.21	302.93	-3520.73	0.00	
10624.00†	90.000	269.742	6780.00	3632.94	302.48	-3620.73	0.00	
10724.00†	90.000	269.742	6780.00	3732.67	302.03	-3720.73	0.00	
10824.00†	90.000	269.742	6780.00	3832.41	301.58	-3820.73	0.00	
10924.00†	90.000	269.742	6780.00	3932.14	301.13	-3920.73	0.00	
11024.00†	90.000	269.742	6780.00	4031.88	300.68	-4020.73	0.00	
11124.00†	90.000	269.742	6780.00	4131.61	300.23	-4120.73	0.00	
11224.00†	90.000	269.742	6780.00	4231.35	299.78	-4220.73	0.00	



Planned Wellpath Report

RANCHO WATER VALLEY 4 (REV-B.0) PWP

Page 6 of 7



REFERENCE WELLPATH IDENTIFICATION			
Operator	EXTRACTION OIL & GAS	Slot	SLOT#01 RANCHO WATER VALLEY 4(559'FNL & 269'FEL,SEC.04)
Area	COLORADO	Well	RANCHO WATER VALLEY 4
Field	WELD COUNTY (NAD83/TRUE NORTH)	Wellbore	RANCHO WATER VALLEY 4 PWB
Facility	SEC.04-T05N-R67W		

WELLPATH DATA (122 stations) † = interpolated/extrapolated station								
MD [ft]	Inclination [°]	Azimuth [°]	TVD [ft]	Vert Sect [ft]	North [ft]	East [ft]	DLS [°/100ft]	Comments
11324.00†	90.000	269.742	6780.00	4331.08	299.33	-4320.73	0.00	
11369.02	90.000	269.742	6780.00 ²	4375.98	299.12	-4365.74	0.00	End of Tangent

HOLE & CASING SECTIONS -									
Ref Wellbore: RANCHO WATER VALLEY 4 PWB					Ref Wellpath: RANCHO WATER VALLEY 4 (REV-B.0) PWP				
String/Diameter	Start MD [ft]	End MD [ft]	Interval [ft]	Start TVD [ft]	End TVD [ft]	Start N/S [ft]	Start E/W [ft]	End N/S [ft]	End E/W [ft]
7in Casing Intermediate	24.00	7173.32	7149.32	24.00	6780.00	0.00	0.00	318.05	-170.09



Planned Wellpath Report

RANCHO WATER VALLEY 4 (REV-B.0) PWP

Page 7 of 7



REFERENCE WELLPATH IDENTIFICATION

Operator	EXTRACTION OIL & GAS	Slot	SLOT#01 RANCHO WATER VALLEY 4(559'FNL & 269'FEL,SEC.04)
Area	COLORADO	Well	RANCHO WATER VALLEY 4
Field	WELD COUNTY (NAD83/TRUE NORTH)	Wellbore	RANCHO WATER VALLEY 4 PWB
Facility	SEC.04-T05N-R67W		

TARGETS

Name	MD [ft]	TVD [ft]	North [ft]	East [ft]	Grid East [US ft]	Grid North [US ft]	Latitude	Longitude	Shape
RANCHO WATER VALLEY PAD N1/2 SECTION 04		0.00	-112.21	-0.84	3170351.42	1401623.60	40°26'03.282"N	104°53'16.922"W	polygon
RANCHO WATER VALLEY PAD S1/2 SECTION 33		0.00	-112.21	-0.84	3170351.42	1401623.60	40°26'03.282"N	104°53'16.922"W	polygon
2) RANCHO WATER VALLEY 4 BHL ON PLAT REV-1(240'FNL & 460'FWL,SEC.04)	11369.02	6780.00	299.12	-4365.74	3165983.95	1402004.79	40°26'07.343"N	104°54'13.370"W	point
1) RANCHO WATER VALLEY 4 LANDING	7173.32	6780.00	318.05	-170.09	3170179.21	1402052.66	40°26'07.534"N	104°53'19.111"W	point
RWV PAD N1/2 SECTION 04 HARDLINES(460'SETBACKS)		6780.00	-112.21	-0.84	3170351.42	1401623.60	40°26'03.282"N	104°53'16.922"W	polygon
RWV PAD N1/4 SECTION 04 HARDLINES(460'SETBACKS)		6780.00	-112.21	-0.84	3170351.42	1401623.60	40°26'03.282"N	104°53'16.922"W	polygon

SURVEY PROGRAM - Ref Wellbore: RANCHO WATER VALLEY 4 PWB Ref Wellpath: RANCHO WATER VALLEY 4 (REV-B.0) PWP

Start MD [ft]	End MD [ft]	Positional Uncertainty Model	Log Name/Comment	Wellbore
24.00	13000.00	NaviTrak (Standard)		RANCHO WATER VALLEY 4 PWB