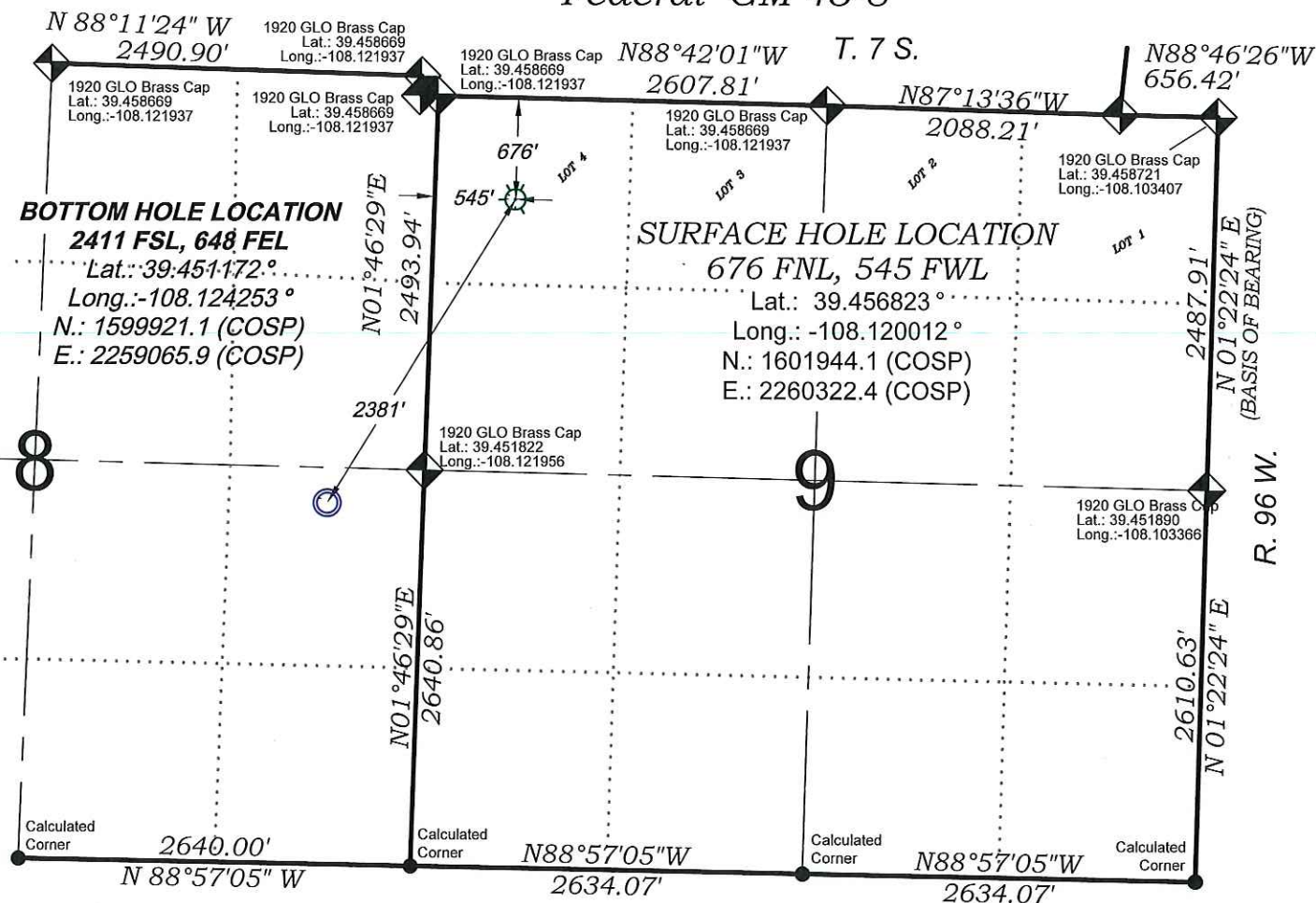
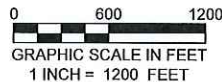


# Federal GM 43-8



SEE CONSTRUCTION LAYOUT  
PLAT FOR VISIBLE IMPROVEMENTS  
WITHIN 500' OF THIS LOCATION



## - LEGEND -

FIELD LOCATED SECTION  
MONUMENTS AS DESCRIBED

FIELD SURVEYED  
WELL LOCATION

CALCULATED BOTTOM  
HOLE LOCATION

CALCULATED SECTION  
CORNER LOCATION

## SURVEYORS STATEMENT

I, MICHAEL J. LANGHORNE, A REGISTERED LAND SURVEYOR IN THE STATE OF COLORADO DO HEREBY CERTIFY THAT THE SURVEY SHOWN HEREON WAS PREPARED UNDER MY DIRECT SUPERVISION AND HAS BEEN STAKED ON THE GROUND AS SHOWN ON THE PLAT AND CHECKING THAT THIS MAP IS A TRUE REPRESENTATION THEREOF.

*Michael J. Langhorne*

MICHAEL J. LANGHORNE, COLORADO REGISTRATION NO. 36572  
FOR AND ON BEHALF OF  
BOOKCLIFF SURVEY SERVICES, INC.

## REFERENCES

- 1) Dependent Resurvey of a Portion and Extension Survey T. 7 S., R. 96 W., 6th P.M (GLO PLAT)
- 2) U.S.G.S. QUAD: Parachute, CO

136 East Third Street  
Rifle, Colorado  
81650 Ph. (970)  
625-2720 Fax (970)  
625-2773

**BOOKCLIFF**  
Survey Services, Inc.

SURVEY DATE: 7/28/14  
MAP DATE: 7/28/14  
SCALE: 1" = 1200'  
PLAT: 1 of 1  
PROJECT: Valley

## NOTES

- 1) ELEVATIONS BASED ON N.A.V.D. 1988 PUBLISHED COORDINATES.
- 2) LATITUDES AND LONGITUDES ARE BASE ON NAD 83, PUBLISHED COORDINATES
- 3) STATE PLANE COORDINATES ARE BASED ON COLORADO CENTRAL ZONE, U.S. SURVEY FEET.
- 4) ELEVATION MASK SET TO 15°
- 5) GPS OPERATOR J. KIRKPATRICK, OBSERVED A PDOP 2.2 ON SURVEY POINT NUMBER 435.
- 6) SURFACE AND BOTTOM HOLE LOCATIONS ARE MEASURED 90° FROM SECTION LINES.

**WELL LOCATION PLAT Prepared for:**  
**WPXENERGY** WPX Energy Rocky Mountain, LLC

NW1/4 NW1/4, SECTION 9  
T. 7 S., R. 96 W. of the 6th. P.M.  
GARFIELD COUNTY, COLORADO