

# EXTRACTION OIL & GAS

Location: COLORADO Slot: SLOT#05 MEAD 5(1456'FNL & 403'FEL,SEC.09)  
Field: WELD COUNTY (NAD83/TRUE NORTH) Well: MEAD 5  
Facility: SEC.09-T07N-R66W Wellbore: MEAD 5 PWB

Plot reference wellpath is MEAD 5 (REV-A.0) PWB

True vertical depths are referenced to RIG (RKB)	Grid System: NAD83 / Lambert Colorado SP, Northern Zone (501), US feet
Measured depths are referenced to RIG (RKB)	North Reference: True north
RIG (RKB) to Mean Sea Level: 4991 feet	Scale: True distance
Mean Sea Level to Mud line (At Slot: SLOT#05 MEAD 5(1456'FNL & 403'FEL,SEC.09)): 0 feet	Depths are in feet
Coordinates are in feet referenced to Slot	Created by: painsetr on 6/13/2014

## Location Information

Facility Name			Grid East (US ft)	Grid North (US ft)	Latitude	Longitude
SEC.09-T07N-R66W			3201342.822	1459836.887	40°35'36.208"N	104°46'29.986"W
Slot	Local N (ft)	Local E (ft)	Grid East (US ft)	Grid North (US ft)	Latitude	Longitude
SLOT#05 MEAD 5(1456FNL & 403FEL,SEC.09)	-104.24	-0.77	3201342.903	1459732.650	40°35'35.178"N	104°46'29.996"W
RIG (RKB) to Mud line (At Slot: SLOT#05 MEAD 5(1456FNL & 403FEL,SEC.09))					4991ft	
Mean Sea Level to Mud line (At Slot: SLOT#05 MEAD 5(1456FNL & 403FEL,SEC.09))					0ft	
RIG (RKB) to Mean Sea Level					4991ft	

## Targets

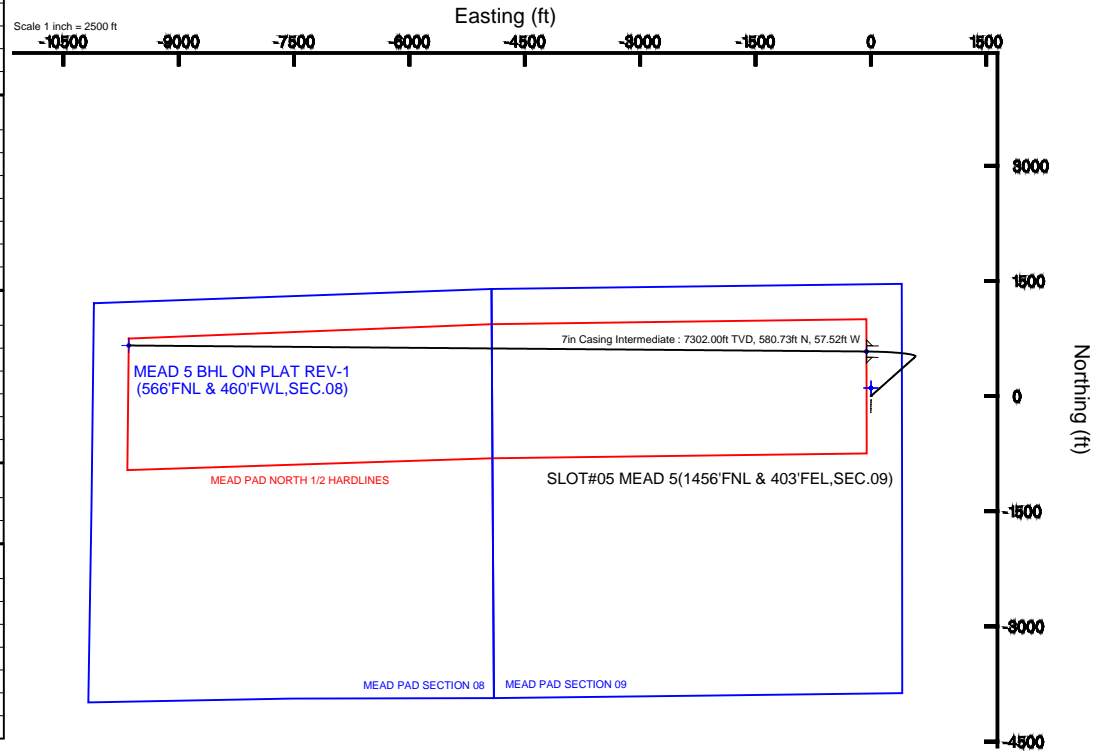
Name	MD (ft)	TVD (ft)	Local N (ft)	Local E (ft)	Grid East (US ft)	Grid North (US ft)	Latitude	Longitude
MEAD PAD SECTION 08		0.00	104.20	0.80	3201342.85	1459836.85	40°35'36.208"N	104°46'29.986"W
MEAD PAD SECTION 09		0.00	104.20	0.80	3201342.85	1459836.85	40°35'36.208"N	104°46'29.986"W
MEAD 5 BHL ON PLAT REV-1(566'FNL & 460'FWL,SEC.08)	17312.80	7302.00	659.13	-9649.59	3191688.51	1460312.85	40°35'41.672"N	104°48'35.082"W
MEAD 5 LANDING	7720.40	7302.00	580.73	-57.52	3201280.64	1460312.88	40°35'40.916"N	104°46'30.742"W
MEAD PAD NORTH 1/2 HARDLINES		7505.00	104.20	0.80	3201342.85	1459836.85	40°35'36.208"N	104°46'29.986"W

## Survey Program

Start MD (ft)	End MD (ft)	Tool	Model	Log Name/Comment	Wellbore
24.00	18000.00	NaviTrak	(Standard)		MEAD 5 PWB

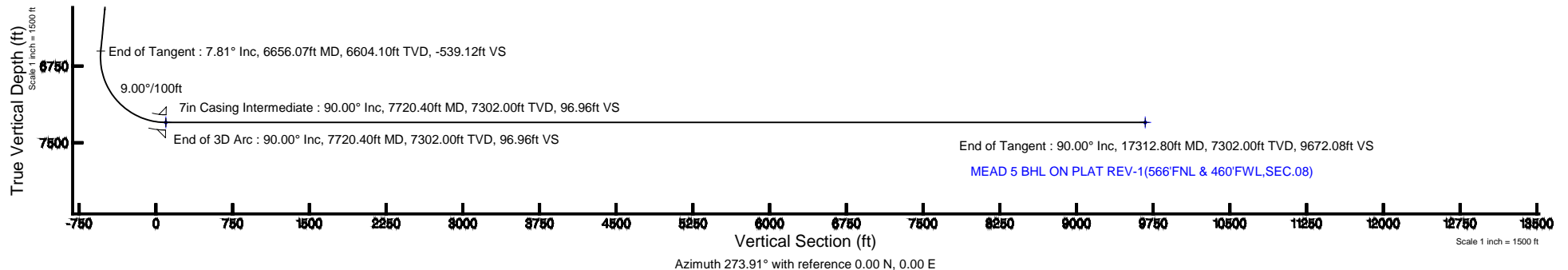
## Well Profile Data

Design Comment	MD (ft)	Inc (°)	Az (°)	TVD (ft)	Local N (ft)	Local E (ft)	DLS (°/100ft)	VS (ft)
Tie On	24.00	0.000	48.369	24.00	0.00	0.00	0.00	0.00
End of Tangent	800.00	0.000	48.369	800.00	0.00	0.00	0.00	0.00
End of Build	1190.73	7.815	48.369	1189.52	17.67	19.88	2.00	-18.63
End of Tangent	6656.07	7.815	48.369	6604.10	511.35	575.31	0.00	-539.12
End of 3D Arc	7720.40	90.000	270.468	7302.00	580.73	-57.52	9.00	96.96
End of Tangent	17312.80	90.000	270.468	7302.00	659.13	-9649.59	0.00	9672.08



BGGM (1945.0 to 2016.0) Dip: 67.10° Field: 52862.2 nT  
Magnetic North is 8.56 degrees East of True North (at 6/12/2014)

To correct azimuth from Magnetic to True add 8.56 degrees





# Planned Wellpath Report

MEAD 5 (REV-A.0) PWP

Page 1 of 8



## REFERENCE WELLPATH IDENTIFICATION

Operator	EXTRACTION OIL & GAS	Slot	SLOT#05 MEAD 5(1456'FNL & 403'FEL,SEC.09)
Area	COLORADO	Well	MEAD 5
Field	WELD COUNTY (NAD83/TRUE NORTH)	Wellbore	MEAD 5 PWB
Facility	SEC.09-T07N-R66W		

## REPORT SETUP INFORMATION

Projection System	NAD83 / Lambert Colorado SP, Northern Zone (501), US feet	Software System	WellArchitect® 4.0.0
North Reference	True	User	Painsetr
Scale	0.999975	Report Generated	6/13/2014 at 10:40:21 AM
Convergence at slot	n/a	Database/Source file	WA_Denver/MEAD_5_PWB.xml

## WELLPATH LOCATION

	Local coordinates		Grid coordinates		Geographic coordinates	
	North[ft]	East[ft]	Easting[US ft]	Northing[US ft]	Latitude	Longitude
Slot Location	-104.24	-0.77	3201342.90	1459732.65	40°35'35.178"N	104°46'29.996"W
Facility Reference Pt			3201342.82	1459836.89	40°35'36.208"N	104°46'29.986"W
Field Reference Pt			3185481.27	1419166.81	40°28'55.560"N	104°49'59.556"W

## WELLPATH DATUM

Calculation method	Minimum curvature	RIG (RKB) to Facility Vertical Datum	4991.00ft
Horizontal Reference Pt	Slot	RIG (RKB) to Mean Sea Level	4991.00ft
Vertical Reference Pt	RIG (RKB)	RIG (RKB) to Mud Line at Slot (SLOT#05 MEAD 5(1456'FNL & 403'FEL,SEC.09))	4991.00ft
MD Reference Pt	RIG (RKB)	Section Origin	N 0.00, E 0.00 ft
Field Vertical Reference	Mean Sea Level	Section Azimuth	273.91°



# Planned Wellpath Report

MEAD 5 (REV-A.0) PWP

Page 2 of 8



## REFERENCE WELLPATH IDENTIFICATION

Operator	EXTRACTION OIL & GAS	Slot	SLOT#05 MEAD 5(1456'FNL & 403'FEL,SEC.09)
Area	COLORADO	Well	MEAD 5
Field	WELD COUNTY (NAD83/TRUE NORTH)	Wellbore	MEAD 5 PWB
Facility	SEC.09-T07N-R66W		

## WELLPATH DATA (179 stations) † = interpolated/extrapolated station

MD [ft]	Inclination [°]	Azimuth [°]	TVD [ft]	Vert Sect [ft]	North [ft]	East [ft]	DLS [°/100ft]	Comments
0.00†	0.000	48.369	0.00	0.00	0.00	0.00	0.00	
24.00	0.000	48.369	24.00	0.00	0.00	0.00	0.00	Tie On
124.00†	0.000	48.369	124.00	0.00	0.00	0.00	0.00	
224.00†	0.000	48.369	224.00	0.00	0.00	0.00	0.00	
324.00†	0.000	48.369	324.00	0.00	0.00	0.00	0.00	
424.00†	0.000	48.369	424.00	0.00	0.00	0.00	0.00	
524.00†	0.000	48.369	524.00	0.00	0.00	0.00	0.00	
624.00†	0.000	48.369	624.00	0.00	0.00	0.00	0.00	
724.00†	0.000	48.369	724.00	0.00	0.00	0.00	0.00	
800.00	0.000	48.369	800.00	0.00	0.00	0.00	0.00	End of Tangent
824.00†	0.480	48.369	824.00	-0.07	0.07	0.08	2.00	
924.00†	2.480	48.369	923.96	-1.88	1.78	2.01	2.00	
1024.00†	4.480	48.369	1023.77	-6.13	5.81	6.54	2.00	
1124.00†	6.480	48.369	1123.31	-12.82	12.16	13.68	2.00	
1190.73	7.815	48.369	1189.52	-18.63	17.67	19.88	2.00	End of Build
1224.00†	7.815	48.369	1222.48	-21.80	20.68	23.27	0.00	
1324.00†	7.815	48.369	1321.55	-31.33	29.71	33.43	0.00	
1424.00†	7.815	48.369	1420.62	-40.85	38.75	43.59	0.00	
1524.00†	7.815	48.369	1519.69	-50.37	47.78	53.75	0.00	
1624.00†	7.815	48.369	1618.77	-59.90	56.81	63.92	0.00	
1724.00†	7.815	48.369	1717.84	-69.42	65.84	74.08	0.00	
1824.00†	7.815	48.369	1816.91	-78.94	74.88	84.24	0.00	
1924.00†	7.815	48.369	1915.98	-88.47	83.91	94.40	0.00	
2024.00†	7.815	48.369	2015.05	-97.99	92.94	104.57	0.00	
2124.00†	7.815	48.369	2114.12	-107.51	101.97	114.73	0.00	
2224.00†	7.815	48.369	2213.19	-117.04	111.01	124.89	0.00	
2324.00†	7.815	48.369	2312.27	-126.56	120.04	135.06	0.00	
2424.00†	7.815	48.369	2411.34	-136.08	129.07	145.22	0.00	
2524.00†	7.815	48.369	2510.41	-145.61	138.11	155.38	0.00	
2624.00†	7.815	48.369	2609.48	-155.13	147.14	165.54	0.00	



# Planned Wellpath Report

MEAD 5 (REV-A.0) PWP

Page 3 of 8



## REFERENCE WELLPATH IDENTIFICATION

Operator	EXTRACTION OIL & GAS	Slot	SLOT#05 MEAD 5(1456'FNL & 403'FEL,SEC.09)
Area	COLORADO	Well	MEAD 5
Field	WELD COUNTY (NAD83/TRUE NORTH)	Wellbore	MEAD 5 PWB
Facility	SEC.09-T07N-R66W		

## WELLPATH DATA (179 stations) † = interpolated/extrapolated station

MD [ft]	Inclination [°]	Azimuth [°]	TVD [ft]	Vert Sect [ft]	North [ft]	East [ft]	DLS [°/100ft]	Comments
2724.00†	7.815	48.369	2708.55	-164.65	156.17	175.71	0.00	
2824.00†	7.815	48.369	2807.62	-174.18	165.20	185.87	0.00	
2924.00†	7.815	48.369	2906.69	-183.70	174.24	196.03	0.00	
3024.00†	7.815	48.369	3005.76	-193.22	183.27	206.19	0.00	
3124.00†	7.815	48.369	3104.84	-202.75	192.30	216.36	0.00	
3224.00†	7.815	48.369	3203.91	-212.27	201.33	226.52	0.00	
3324.00†	7.815	48.369	3302.98	-221.80	210.37	236.68	0.00	
3424.00†	7.815	48.369	3402.05	-231.32	219.40	246.84	0.00	
3524.00†	7.815	48.369	3501.12	-240.84	228.43	257.01	0.00	
3624.00†	7.815	48.369	3600.19	-250.37	237.47	267.17	0.00	
3724.00†	7.815	48.369	3699.26	-259.89	246.50	277.33	0.00	
3824.00†	7.815	48.369	3798.34	-269.41	255.53	287.49	0.00	
3924.00†	7.815	48.369	3897.41	-278.94	264.56	297.66	0.00	
4024.00†	7.815	48.369	3996.48	-288.46	273.60	307.82	0.00	
4124.00†	7.815	48.369	4095.55	-297.98	282.63	317.98	0.00	
4224.00†	7.815	48.369	4194.62	-307.51	291.66	328.15	0.00	
4324.00†	7.815	48.369	4293.69	-317.03	300.70	338.31	0.00	
4424.00†	7.815	48.369	4392.76	-326.55	309.73	348.47	0.00	
4524.00†	7.815	48.369	4491.83	-336.08	318.76	358.63	0.00	
4624.00†	7.815	48.369	4590.91	-345.60	327.79	368.80	0.00	
4724.00†	7.815	48.369	4689.98	-355.12	336.83	378.96	0.00	
4824.00†	7.815	48.369	4789.05	-364.65	345.86	389.12	0.00	
4924.00†	7.815	48.369	4888.12	-374.17	354.89	399.28	0.00	
5024.00†	7.815	48.369	4987.19	-383.69	363.92	409.45	0.00	
5124.00†	7.815	48.369	5086.26	-393.22	372.96	419.61	0.00	
5224.00†	7.815	48.369	5185.33	-402.74	381.99	429.77	0.00	
5324.00†	7.815	48.369	5284.41	-412.26	391.02	439.93	0.00	
5424.00†	7.815	48.369	5383.48	-421.79	400.06	450.10	0.00	
5524.00†	7.815	48.369	5482.55	-431.31	409.09	460.26	0.00	
5624.00†	7.815	48.369	5581.62	-440.83	418.12	470.42	0.00	



# Planned Wellpath Report

MEAD 5 (REV-A.0) PWP

Page 4 of 8



## REFERENCE WELLPATH IDENTIFICATION

Operator	EXTRACTION OIL & GAS	Slot	SLOT#05 MEAD 5(1456'FNL & 403'FEL,SEC.09)
Area	COLORADO	Well	MEAD 5
Field	WELD COUNTY (NAD83/TRUE NORTH)	Wellbore	MEAD 5 PWB
Facility	SEC.09-T07N-R66W		

## WELLPATH DATA (179 stations) † = interpolated/extrapolated station

MD [ft]	Inclination [°]	Azimuth [°]	TVD [ft]	Vert Sect [ft]	North [ft]	East [ft]	DLS [°/100ft]	Comments
5724.00†	7.815	48.369	5680.69	-450.36	427.15	480.58	0.00	
5824.00†	7.815	48.369	5779.76	-459.88	436.19	490.75	0.00	
5924.00†	7.815	48.369	5878.83	-469.40	445.22	500.91	0.00	
6024.00†	7.815	48.369	5977.90	-478.93	454.25	511.07	0.00	
6124.00†	7.815	48.369	6076.98	-488.45	463.29	521.24	0.00	
6224.00†	7.815	48.369	6176.05	-497.98	472.32	531.40	0.00	
6324.00†	7.815	48.369	6275.12	-507.50	481.35	541.56	0.00	
6424.00†	7.815	48.369	6374.19	-517.02	490.38	551.72	0.00	
6524.00†	7.815	48.369	6473.26	-526.55	499.42	561.89	0.00	
6624.00†	7.815	48.369	6572.33	-536.07	508.45	572.05	0.00	
6656.07	7.815	48.369	6604.10	-539.12	511.35	575.31	0.00	End of Tangent
6724.00†	5.267	356.939	6671.64	-541.98	517.53	578.60	9.00	
6824.00†	10.692	299.632	6770.77	-533.05	526.72	570.27	9.00	
6924.00†	19.038	285.933	6867.36	-508.69	535.80	546.47	9.00	
7024.00†	27.787	280.524	6959.05	-469.50	544.56	507.79	9.00	
7124.00†	36.650	277.572	7043.57	-416.46	552.76	455.18	9.00	
7224.00†	45.562	275.645	7118.85	-350.85	560.22	389.94	9.00	
7324.00†	54.497	274.232	7183.03	-274.31	566.75	313.66	9.00	
7424.00†	63.445	273.104	7234.52	-188.71	572.19	228.23	9.00	
7524.00†	72.401	272.141	7272.07	-96.16	576.40	135.75	9.00	
7624.00†	81.361	271.269	7294.75	1.06	579.28	38.51	9.00	
7720.40	90.000	270.468	7302.00 <sup>1</sup>	96.96	580.73	-57.52	9.00	End of 3D Arc
7724.00†	90.000	270.468	7302.00	100.55	580.76	-61.12	0.00	
7824.00†	90.000	270.468	7302.00	200.37	581.58	-161.11	0.00	
7924.00†	90.000	270.468	7302.00	300.19	582.40	-261.11	0.00	
8024.00†	90.000	270.468	7302.00	400.01	583.21	-361.11	0.00	
8124.00†	90.000	270.468	7302.00	499.83	584.03	-461.10	0.00	
8224.00†	90.000	270.468	7302.00	599.65	584.85	-561.10	0.00	
8324.00†	90.000	270.468	7302.00	699.47	585.67	-661.10	0.00	
8424.00†	90.000	270.468	7302.00	799.29	586.48	-761.09	0.00	



# Planned Wellpath Report

MEAD 5 (REV-A.0) PWP

Page 5 of 8



## REFERENCE WELLPATH IDENTIFICATION

Operator	EXTRACTION OIL & GAS	Slot	SLOT#05 MEAD 5(1456'FNL & 403'FEL,SEC.09)
Area	COLORADO	Well	MEAD 5
Field	WELD COUNTY (NAD83/TRUE NORTH)	Wellbore	MEAD 5 PWB
Facility	SEC.09-T07N-R66W		

## WELLPATH DATA (179 stations) † = interpolated/extrapolated station

MD [ft]	Inclination [°]	Azimuth [°]	TVD [ft]	Vert Sect [ft]	North [ft]	East [ft]	DLS [°/100ft]	Comments
8524.00†	90.000	270.468	7302.00	899.11	587.30	-861.09	0.00	
8624.00†	90.000	270.468	7302.00	998.93	588.12	-961.09	0.00	
8724.00†	90.000	270.468	7302.00	1098.75	588.94	-1061.08	0.00	
8824.00†	90.000	270.468	7302.00	1198.57	589.75	-1161.08	0.00	
8924.00†	90.000	270.468	7302.00	1298.39	590.57	-1261.08	0.00	
9024.00†	90.000	270.468	7302.00	1398.21	591.39	-1361.07	0.00	
9124.00†	90.000	270.468	7302.00	1498.03	592.20	-1461.07	0.00	
9224.00†	90.000	270.468	7302.00	1597.85	593.02	-1561.07	0.00	
9324.00†	90.000	270.468	7302.00	1697.67	593.84	-1661.06	0.00	
9424.00†	90.000	270.468	7302.00	1797.49	594.66	-1761.06	0.00	
9524.00†	90.000	270.468	7302.00	1897.31	595.47	-1861.06	0.00	
9624.00†	90.000	270.468	7302.00	1997.13	596.29	-1961.05	0.00	
9724.00†	90.000	270.468	7302.00	2096.95	597.11	-2061.05	0.00	
9824.00†	90.000	270.468	7302.00	2196.77	597.93	-2161.05	0.00	
9924.00†	90.000	270.468	7302.00	2296.59	598.74	-2261.04	0.00	
10024.00†	90.000	270.468	7302.00	2396.41	599.56	-2361.04	0.00	
10124.00†	90.000	270.468	7302.00	2496.23	600.38	-2461.04	0.00	
10224.00†	90.000	270.468	7302.00	2596.05	601.20	-2561.03	0.00	
10324.00†	90.000	270.468	7302.00	2695.87	602.01	-2661.03	0.00	
10424.00†	90.000	270.468	7302.00	2795.69	602.83	-2761.03	0.00	
10524.00†	90.000	270.468	7302.00	2895.51	603.65	-2861.02	0.00	
10624.00†	90.000	270.468	7302.00	2995.33	604.46	-2961.02	0.00	
10724.00†	90.000	270.468	7302.00	3095.15	605.28	-3061.02	0.00	
10824.00†	90.000	270.468	7302.00	3194.97	606.10	-3161.01	0.00	
10924.00†	90.000	270.468	7302.00	3294.79	606.92	-3261.01	0.00	
11024.00†	90.000	270.468	7302.00	3394.61	607.73	-3361.01	0.00	
11124.00†	90.000	270.468	7302.00	3494.43	608.55	-3461.00	0.00	
11224.00†	90.000	270.468	7302.00	3594.25	609.37	-3561.00	0.00	
11324.00†	90.000	270.468	7302.00	3694.07	610.19	-3661.00	0.00	
11424.00†	90.000	270.468	7302.00	3793.89	611.00	-3760.99	0.00	



# Planned Wellpath Report

MEAD 5 (REV-A.0) PWP

Page 6 of 8



## REFERENCE WELLPATH IDENTIFICATION

Operator	EXTRACTION OIL & GAS	Slot	SLOT#05 MEAD 5(1456'FNL & 403'FEL,SEC.09)
Area	COLORADO	Well	MEAD 5
Field	WELD COUNTY (NAD83/TRUE NORTH)	Wellbore	MEAD 5 PWB
Facility	SEC.09-T07N-R66W		

## WELLPATH DATA (179 stations) † = interpolated/extrapolated station

MD [ft]	Inclination [°]	Azimuth [°]	TVD [ft]	Vert Sect [ft]	North [ft]	East [ft]	DLS [°/100ft]	Comments
11524.00†	90.000	270.468	7302.00	3893.71	611.82	-3860.99	0.00	
11624.00†	90.000	270.468	7302.00	3993.53	612.64	-3960.99	0.00	
11724.00†	90.000	270.468	7302.00	4093.35	613.45	-4060.98	0.00	
11824.00†	90.000	270.468	7302.00	4193.17	614.27	-4160.98	0.00	
11924.00†	90.000	270.468	7302.00	4292.99	615.09	-4260.98	0.00	
12024.00†	90.000	270.468	7302.00	4392.81	615.91	-4360.97	0.00	
12124.00†	90.000	270.468	7302.00	4492.63	616.72	-4460.97	0.00	
12224.00†	90.000	270.468	7302.00	4592.45	617.54	-4560.97	0.00	
12324.00†	90.000	270.468	7302.00	4692.27	618.36	-4660.96	0.00	
12424.00†	90.000	270.468	7302.00	4792.09	619.18	-4760.96	0.00	
12524.00†	90.000	270.468	7302.00	4891.91	619.99	-4860.96	0.00	
12624.00†	90.000	270.468	7302.00	4991.73	620.81	-4960.95	0.00	
12724.00†	90.000	270.468	7302.00	5091.55	621.63	-5060.95	0.00	
12824.00†	90.000	270.468	7302.00	5191.37	622.44	-5160.95	0.00	
12924.00†	90.000	270.468	7302.00	5291.19	623.26	-5260.94	0.00	
13024.00†	90.000	270.468	7302.00	5391.01	624.08	-5360.94	0.00	
13124.00†	90.000	270.468	7302.00	5490.83	624.90	-5460.94	0.00	
13224.00†	90.000	270.468	7302.00	5590.65	625.71	-5560.93	0.00	
13324.00†	90.000	270.468	7302.00	5690.47	626.53	-5660.93	0.00	
13424.00†	90.000	270.468	7302.00	5790.29	627.35	-5760.93	0.00	
13524.00†	90.000	270.468	7302.00	5890.11	628.17	-5860.92	0.00	
13624.00†	90.000	270.468	7302.00	5989.93	628.98	-5960.92	0.00	
13724.00†	90.000	270.468	7302.00	6089.74	629.80	-6060.92	0.00	
13824.00†	90.000	270.468	7302.00	6189.56	630.62	-6160.91	0.00	
13924.00†	90.000	270.468	7302.00	6289.38	631.44	-6260.91	0.00	
14024.00†	90.000	270.468	7302.00	6389.20	632.25	-6360.91	0.00	
14124.00†	90.000	270.468	7302.00	6489.02	633.07	-6460.90	0.00	
14224.00†	90.000	270.468	7302.00	6588.84	633.89	-6560.90	0.00	
14324.00†	90.000	270.468	7302.00	6688.66	634.70	-6660.90	0.00	
14424.00†	90.000	270.468	7302.00	6788.48	635.52	-6760.89	0.00	



# Planned Wellpath Report

MEAD 5 (REV-A.0) PWP

Page 7 of 8



## REFERENCE WELLPATH IDENTIFICATION

Operator	EXTRACTION OIL & GAS	Slot	SLOT#05 MEAD 5(1456'FNL & 403'FEL,SEC.09)
Area	COLORADO	Well	MEAD 5
Field	WELD COUNTY (NAD83/TRUE NORTH)	Wellbore	MEAD 5 PWB
Facility	SEC.09-T07N-R66W		

## WELLPATH DATA (179 stations) † = interpolated/extrapolated station

MD [ft]	Inclination [°]	Azimuth [°]	TVD [ft]	Vert Sect [ft]	North [ft]	East [ft]	DLS [°/100ft]	Comments
14524.00†	90.000	270.468	7302.00	6888.30	636.34	-6860.89	0.00	
14624.00†	90.000	270.468	7302.00	6988.12	637.16	-6960.89	0.00	
14724.00†	90.000	270.468	7302.00	7087.94	637.97	-7060.88	0.00	
14824.00†	90.000	270.468	7302.00	7187.76	638.79	-7160.88	0.00	
14924.00†	90.000	270.468	7302.00	7287.58	639.61	-7260.88	0.00	
15024.00†	90.000	270.468	7302.00	7387.40	640.43	-7360.87	0.00	
15124.00†	90.000	270.468	7302.00	7487.22	641.24	-7460.87	0.00	
15224.00†	90.000	270.468	7302.00	7587.04	642.06	-7560.87	0.00	
15324.00†	90.000	270.468	7302.00	7686.86	642.88	-7660.86	0.00	
15424.00†	90.000	270.468	7302.00	7786.68	643.69	-7760.86	0.00	
15524.00†	90.000	270.468	7302.00	7886.50	644.51	-7860.86	0.00	
15624.00†	90.000	270.468	7302.00	7986.32	645.33	-7960.85	0.00	
15724.00†	90.000	270.468	7302.00	8086.14	646.15	-8060.85	0.00	
15824.00†	90.000	270.468	7302.00	8185.96	646.96	-8160.85	0.00	
15924.00†	90.000	270.468	7302.00	8285.78	647.78	-8260.84	0.00	
16024.00†	90.000	270.468	7302.00	8385.60	648.60	-8360.84	0.00	
16124.00†	90.000	270.468	7302.00	8485.42	649.42	-8460.84	0.00	
16224.00†	90.000	270.468	7302.00	8585.24	650.23	-8560.83	0.00	
16324.00†	90.000	270.468	7302.00	8685.06	651.05	-8660.83	0.00	
16424.00†	90.000	270.468	7302.00	8784.88	651.87	-8760.83	0.00	
16524.00†	90.000	270.468	7302.00	8884.70	652.68	-8860.82	0.00	
16624.00†	90.000	270.468	7302.00	8984.52	653.50	-8960.82	0.00	
16724.00†	90.000	270.468	7302.00	9084.34	654.32	-9060.82	0.00	
16824.00†	90.000	270.468	7302.00	9184.16	655.14	-9160.81	0.00	
16924.00†	90.000	270.468	7302.00	9283.98	655.95	-9260.81	0.00	
17024.00†	90.000	270.468	7302.00	9383.80	656.77	-9360.81	0.00	
17124.00†	90.000	270.468	7302.00	9483.62	657.59	-9460.80	0.00	
17224.00†	90.000	270.468	7302.00	9583.44	658.41	-9560.80	0.00	
17312.80	90.000	270.468	7302.00 <sup>2</sup>	9672.08	659.13	-9649.59	0.00	End of Tangent





# Planned Wellpath Report

MEAD 5 (REV-A.0) PWP

Page 8 of 8



## REFERENCE WELLPATH IDENTIFICATION

Operator	EXTRACTION OIL & GAS	Slot	SLOT#05 MEAD 5(1456'FNL & 403'FEL,SEC.09)
Area	COLORADO	Well	MEAD 5
Field	WELD COUNTY (NAD83/TRUE NORTH)	Wellbore	MEAD 5 PWB
Facility	SEC.09-T07N-R66W		

## HOLE & CASING SECTIONS - Ref Wellbore: MEAD 5 PWB Ref Wellpath: MEAD 5 (REV-A.0) PWP

String/Diameter	Start MD [ft]	End MD [ft]	Interval [ft]	Start TVD [ft]	End TVD [ft]	Start N/S [ft]	Start E/W [ft]	End N/S [ft]	End E/W [ft]
7in Casing Intermediate	24.00	7720.40	7696.40	24.00	7302.00	0.00	0.00	580.73	-57.52

## TARGETS

Name	MD [ft]	TVD [ft]	North [ft]	East [ft]	Grid East [US ft]	Grid North [US ft]	Latitude	Longitude	Shape
MEAD PAD SECTION 08		0.00	104.20	0.80	3201342.85	1459836.85	40°35'36.208"N	104°46'29.986"W	polygon
MEAD PAD SECTION 09		0.00	104.20	0.80	3201342.85	1459836.85	40°35'36.208"N	104°46'29.986"W	polygon
2) MEAD 5 BHL ON PLAT REV-1 (566'FNL & 460'FWL,SEC.08)	17312.80	7302.00	659.13	-9649.59	3191688.51	1460312.85	40°35'41.672"N	104°48'35.082"W	point
1) MEAD 5 LANDING	7720.40	7302.00	580.73	-57.52	3201280.64	1460312.88	40°35'40.916"N	104°46'30.742"W	point
MEAD PAD NORTH 1/2 HARDLINES		7505.00	104.20	0.80	3201342.85	1459836.85	40°35'36.208"N	104°46'29.986"W	polygon

## SURVEY PROGRAM - Ref Wellbore: MEAD 5 PWB Ref Wellpath: MEAD 5 (REV-A.0) PWP

Start MD [ft]	End MD [ft]	Positional Uncertainty Model	Log Name/Comment	Wellbore
24.00	18000.00	NaviTrak (Standard)		MEAD 5 PWB