

EXTRACTION OIL & GAS

Location: COLORADO Slot: SLOT#02 MEAD 2(1378'FNL & 403'FEL,SEC.09)
Field: WELD COUNTY (NAD83/TRUE NORTH) Well: MEAD 2
Facility: SEC.09-T07N-R66W Wellbore: MEAD 2 PWB

Plot reference wellpath is MEAD 2 (REV-B.0) PWB

True vertical depths are referenced to RIG (RKB)	Grid System: NAD83 / Lambert Colorado SP, Northern Zone (501), US feet
Measured depths are referenced to RIG (RKB)	North Reference: True north
RIG (RKB) to Mean Sea Level: 4991 feet	Scale: True distance
Mean Sea Level to Mud line (At Slot: SLOT#02 MEAD 2(1378'FNL & 403'FEL,SEC.09)): 0 feet	Depths are in feet
Coordinates are in feet referenced to Slot	Created by: painsetr on 8/5/2014

Location Information

Facility Name			Grid East (US ft)	Grid North (US ft)	Latitude	Longitude
SEC.09-T07N-R66W			3201342.822	1459836.887	40°35'36.208"N	104°46'29.986"W
Slot	Local N (ft)	Local E (ft)	Grid East (US ft)	Grid North (US ft)	Latitude	Longitude
SLOT#02 MEAD 2(1378'FNL & 403'FEL,SEC.09)	-26.31	-0.23	3201342.806	1459810.574	40°35'35.948"N	104°46'29.989"W
RIG (RKB) to Mud line (At Slot: SLOT#02 MEAD 2(1378'FNL & 403'FEL,SEC.09))					4991ft	
Mean Sea Level to Mud line (At Slot: SLOT#02 MEAD 2(1378'FNL & 403'FEL,SEC.09))					0ft	
RIG (RKB) to Mean Sea Level					4991ft	

Targets

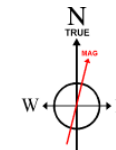
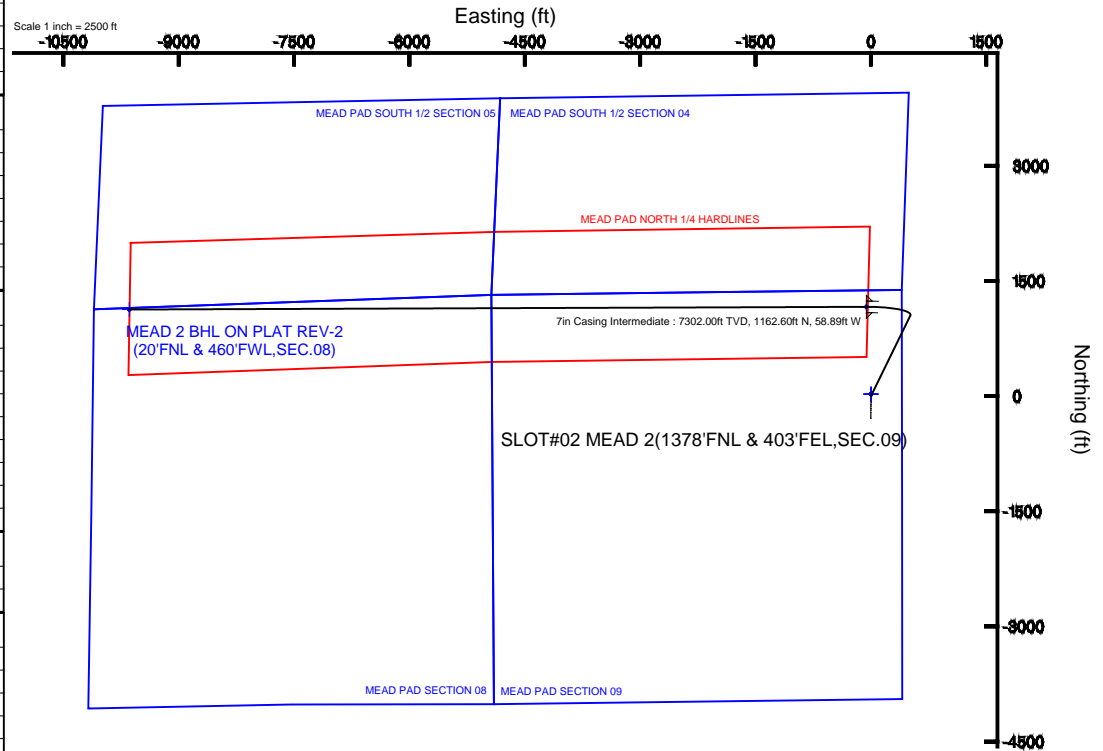
Name	MD (ft)	TVD (ft)	Local N (ft)	Local E (ft)	Grid East (US ft)	Grid North (US ft)	Latitude	Longitude
MEAD PAD SECTION 08		0.00	26.27	0.26	3201342.85	1459836.85	40°35'36.208"N	104°46'29.986"W
MEAD PAD SECTION 09		0.00	26.27	0.26	3201342.85	1459836.85	40°35'36.208"N	104°46'29.986"W
MEAD PAD SOUTH 1/2 SECTION 04		0.00	26.27	0.26	3201342.85	1459836.85	40°35'36.208"N	104°46'29.986"W
MEAD PAD SOUTH 1/2 SECTION 05		0.00	26.27	0.26	3201342.85	1459836.85	40°35'36.208"N	104°46'29.986"W
MEAD 2 BHL ON PLAT REV-1(93'FSL & 460'FWL,SEC.05)		7302.00	1240.99	-9637.93	3191695.31	1460072.70	40°35'48.192"N	104°48'34.927"W
MEAD 2 BHL ON PLAT REV-2(20'FNL & 460'FWL,SEC.08)		7302.00	1127.69	-9643.25	3191696.92	1460859.36	40°35'47.072"N	104°48'34.996"W
MEAD 2 LANDING		7759.43	7302.00	-58.89	3201274.41	1460072.62	40°35'47.436"N	104°46'30.752"W
MEAD PAD NORTH 1/4 HARDLINES		7505.00	26.27	0.26	3201342.85	1459836.85	40°35'36.208"N	104°46'29.986"W

Survey Program

Start MD (ft)	End MD (ft)	Tool	Model	Log Name/Comment	Wellbore
24.00	18000.00	NaviTrak	NaviTrak (Standard)		MEAD 2 PWB

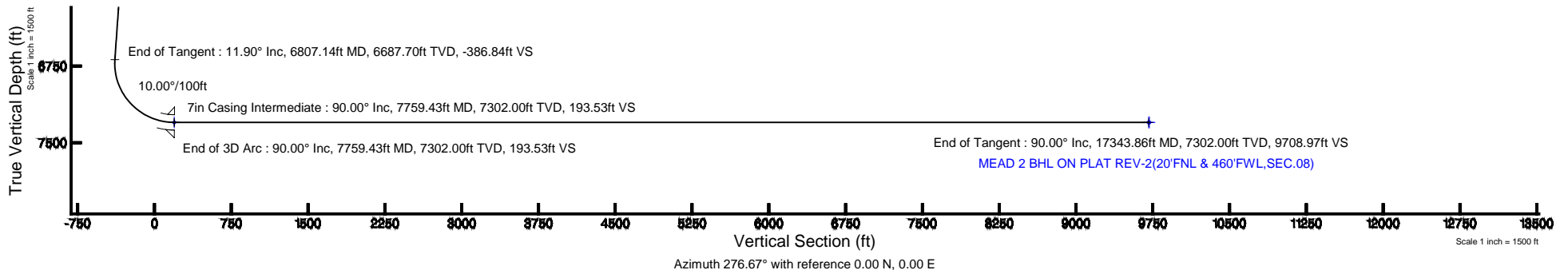
Well Profile Data

Design Comment	MD (ft)	Inc (°)	Az (°)	TVD (ft)	Local N (ft)	Local E (ft)	DLS (°/100ft)	VS (ft)
Tie On	24.00	0.000	26.029	24.00	0.00	0.00	0.00	0.00
End of Tangent	850.00	0.000	26.029	850.00	0.00	0.00	0.00	0.00
End of Build	1444.84	11.897	26.029	1440.57	55.29	27.00	2.00	-20.40
End of Tangent	6807.14	11.897	26.029	6687.70	1048.60	512.10	0.00	-386.84
End of 3D Arc	7759.43	90.000	269.791	7302.00	1162.60	-58.89	10.00	193.53
End of Tangent	17343.86	90.000	269.791	7302.00	1127.69	-9643.25	0.00	9708.97



BGGM (1945.0 to 2016.0) Dip: 67.10° Field: 52862.2 nT
Magnetic North is 8.56 degrees East of True North (at 6/12/2014)

To correct azimuth from Magnetic to True add 8.56 degrees





Planned Wellpath Report

MEAD 2 (REV-B.0) PWP

Page 1 of 8



REFERENCE WELLPATH IDENTIFICATION

Operator	EXTRACTION OIL & GAS	Slot	SLOT#02 MEAD 2(1378'FNL & 403'FEL,SEC.09)
Area	COLORADO	Well	MEAD 2
Field	WELD COUNTY (NAD83/TRUE NORTH)	Wellbore	MEAD 2 PWB
Facility	SEC.09-T07N-R66W		

REPORT SETUP INFORMATION

Projection System	NAD83 / Lambert Colorado SP, Northern Zone (501), US feet	Software System	WellArchitect® 4.0.0
North Reference	True	User	Painsetr
Scale	0.999975	Report Generated	8/5/2014 at 10:19:55 AM
Convergence at slot	n/a	Database/Source file	WA_Denver/MEAD_2_PWB.xml

WELLPATH LOCATION

	Local coordinates		Grid coordinates		Geographic coordinates	
	North[ft]	East[ft]	Easting[US ft]	Northing[US ft]	Latitude	Longitude
Slot Location	-26.31	-0.23	3201342.81	1459810.57	40°35'35.948"N	104°46'29.989"W
Facility Reference Pt			3201342.82	1459836.89	40°35'36.208"N	104°46'29.986"W
Field Reference Pt			3185481.27	1419166.81	40°28'55.560"N	104°49'59.556"W

WELLPATH DATUM

Calculation method	Minimum curvature	RIG (RKB) to Facility Vertical Datum	4991.00ft
Horizontal Reference Pt	Slot	RIG (RKB) to Mean Sea Level	4991.00ft
Vertical Reference Pt	RIG (RKB)	RIG (RKB) to Mud Line at Slot (SLOT#02 MEAD 2(1378'FNL & 403'FEL,SEC.09))	4991.00ft
MD Reference Pt	RIG (RKB)	Section Origin	N 0.00, E 0.00 ft
Field Vertical Reference	Mean Sea Level	Section Azimuth	276.67°



Planned Wellpath Report

MEAD 2 (REV-B.0) PWP

Page 2 of 8



REFERENCE WELLPATH IDENTIFICATION

Operator	EXTRACTION OIL & GAS	Slot	SLOT#02 MEAD 2(1378'FNL & 403'FEL,SEC.09)
Area	COLORADO	Well	MEAD 2
Field	WELD COUNTY (NAD83/TRUE NORTH)	Wellbore	MEAD 2 PWB
Facility	SEC.09-T07N-R66W		

WELLPATH DATA (180 stations) † = interpolated/extrapolated station

MD [ft]	Inclination [°]	Azimuth [°]	TVD [ft]	Vert Sect [ft]	North [ft]	East [ft]	DLS [°/100ft]	Comments
0.00†	0.000	26.029	0.00	0.00	0.00	0.00	0.00	
24.00	0.000	26.029	24.00	0.00	0.00	0.00	0.00	Tie On
124.00†	0.000	26.029	124.00	0.00	0.00	0.00	0.00	
224.00†	0.000	26.029	224.00	0.00	0.00	0.00	0.00	
324.00†	0.000	26.029	324.00	0.00	0.00	0.00	0.00	
424.00†	0.000	26.029	424.00	0.00	0.00	0.00	0.00	
524.00†	0.000	26.029	524.00	0.00	0.00	0.00	0.00	
624.00†	0.000	26.029	624.00	0.00	0.00	0.00	0.00	
724.00†	0.000	26.029	724.00	0.00	0.00	0.00	0.00	
824.00†	0.000	26.029	824.00	0.00	0.00	0.00	0.00	
850.00	0.000	26.029	850.00	0.00	0.00	0.00	0.00	End of Tangent
924.00†	1.480	26.029	923.99	-0.32	0.86	0.42	2.00	
1024.00†	3.480	26.029	1023.89	-1.75	4.75	2.32	2.00	
1124.00†	5.480	26.029	1123.58	-4.34	11.77	5.75	2.00	
1224.00†	7.480	26.029	1222.94	-8.08	21.91	10.70	2.00	
1324.00†	9.480	26.029	1321.84	-12.97	35.16	17.17	2.00	
1424.00†	11.480	26.029	1420.17	-19.00	51.50	25.15	2.00	
1444.84	11.897	26.029	1440.57	-20.40	55.29	27.00	2.00	End of Build
1524.00†	11.897	26.029	1518.03	-25.81	69.96	34.16	0.00	
1624.00†	11.897	26.029	1615.89	-32.64	88.48	43.21	0.00	
1724.00†	11.897	26.029	1713.74	-39.48	107.00	52.26	0.00	
1824.00†	11.897	26.029	1811.59	-46.31	125.53	61.30	0.00	
1924.00†	11.897	26.029	1909.44	-53.14	144.05	70.35	0.00	
2024.00†	11.897	26.029	2007.30	-59.98	162.58	79.40	0.00	
2124.00†	11.897	26.029	2105.15	-66.81	181.10	88.44	0.00	
2224.00†	11.897	26.029	2203.00	-73.64	199.62	97.49	0.00	
2324.00†	11.897	26.029	2300.85	-80.48	218.15	106.54	0.00	
2424.00†	11.897	26.029	2398.70	-87.31	236.67	115.58	0.00	
2524.00†	11.897	26.029	2496.56	-94.14	255.19	124.63	0.00	
2624.00†	11.897	26.029	2594.41	-100.98	273.72	133.68	0.00	



Planned Wellpath Report

MEAD 2 (REV-B.0) PWP

Page 3 of 8



REFERENCE WELLPATH IDENTIFICATION

Operator	EXTRACTION OIL & GAS	Slot	SLOT#02 MEAD 2(1378'FNL & 403'FEL,SEC.09)
Area	COLORADO	Well	MEAD 2
Field	WELD COUNTY (NAD83/TRUE NORTH)	Wellbore	MEAD 2 PWB
Facility	SEC.09-T07N-R66W		

WELLPATH DATA (180 stations) † = interpolated/extrapolated station

MD [ft]	Inclination [°]	Azimuth [°]	TVD [ft]	Vert Sect [ft]	North [ft]	East [ft]	DLS [°/100ft]	Comments
2724.00†	11.897	26.029	2692.26	-107.81	292.24	142.72	0.00	
2824.00†	11.897	26.029	2790.11	-114.65	310.77	151.77	0.00	
2924.00†	11.897	26.029	2887.96	-121.48	329.29	160.82	0.00	
3024.00†	11.897	26.029	2985.82	-128.31	347.81	169.86	0.00	
3124.00†	11.897	26.029	3083.67	-135.15	366.34	178.91	0.00	
3224.00†	11.897	26.029	3181.52	-141.98	384.86	187.95	0.00	
3324.00†	11.897	26.029	3279.37	-148.81	403.39	197.00	0.00	
3424.00†	11.897	26.029	3377.22	-155.65	421.91	206.05	0.00	
3524.00†	11.897	26.029	3475.08	-162.48	440.43	215.09	0.00	
3624.00†	11.897	26.029	3572.93	-169.32	458.96	224.14	0.00	
3724.00†	11.897	26.029	3670.78	-176.15	477.48	233.19	0.00	
3824.00†	11.897	26.029	3768.63	-182.98	496.00	242.23	0.00	
3924.00†	11.897	26.029	3866.48	-189.82	514.53	251.28	0.00	
4024.00†	11.897	26.029	3964.34	-196.65	533.05	260.33	0.00	
4124.00†	11.897	26.029	4062.19	-203.48	551.58	269.37	0.00	
4224.00†	11.897	26.029	4160.04	-210.32	570.10	278.42	0.00	
4324.00†	11.897	26.029	4257.89	-217.15	588.62	287.47	0.00	
4424.00†	11.897	26.029	4355.74	-223.99	607.15	296.51	0.00	
4524.00†	11.897	26.029	4453.60	-230.82	625.67	305.56	0.00	
4624.00†	11.897	26.029	4551.45	-237.65	644.20	314.61	0.00	
4724.00†	11.897	26.029	4649.30	-244.49	662.72	323.65	0.00	
4824.00†	11.897	26.029	4747.15	-251.32	681.24	332.70	0.00	
4924.00†	11.897	26.029	4845.01	-258.15	699.77	341.74	0.00	
5024.00†	11.897	26.029	4942.86	-264.99	718.29	350.79	0.00	
5124.00†	11.897	26.029	5040.71	-271.82	736.81	359.84	0.00	
5224.00†	11.897	26.029	5138.56	-278.66	755.34	368.88	0.00	
5324.00†	11.897	26.029	5236.41	-285.49	773.86	377.93	0.00	
5424.00†	11.897	26.029	5334.27	-292.32	792.39	386.98	0.00	
5524.00†	11.897	26.029	5432.12	-299.16	810.91	396.02	0.00	
5624.00†	11.897	26.029	5529.97	-305.99	829.43	405.07	0.00	



Planned Wellpath Report

MEAD 2 (REV-B.0) PWP

Page 4 of 8



REFERENCE WELLPATH IDENTIFICATION

Operator	EXTRACTION OIL & GAS	Slot	SLOT#02 MEAD 2(1378'FNL & 403'FEL,SEC.09)
Area	COLORADO	Well	MEAD 2
Field	WELD COUNTY (NAD83/TRUE NORTH)	Wellbore	MEAD 2 PWB
Facility	SEC.09-T07N-R66W		

WELLPATH DATA (180 stations) † = interpolated/extrapolated station

MD [ft]	Inclination [°]	Azimuth [°]	TVD [ft]	Vert Sect [ft]	North [ft]	East [ft]	DLS [°/100ft]	Comments
5724.00†	11.897	26.029	5627.82	-312.82	847.96	414.12	0.00	
5824.00†	11.897	26.029	5725.67	-319.66	866.48	423.16	0.00	
5924.00†	11.897	26.029	5823.53	-326.49	885.00	432.21	0.00	
6024.00†	11.897	26.029	5921.38	-333.32	903.53	441.26	0.00	
6124.00†	11.897	26.029	6019.23	-340.16	922.05	450.30	0.00	
6224.00†	11.897	26.029	6117.08	-346.99	940.58	459.35	0.00	
6324.00†	11.897	26.029	6214.93	-353.83	959.10	468.40	0.00	
6424.00†	11.897	26.029	6312.79	-360.66	977.62	477.44	0.00	
6524.00†	11.897	26.029	6410.64	-367.49	996.15	486.49	0.00	
6624.00†	11.897	26.029	6508.49	-374.33	1014.67	495.53	0.00	
6724.00†	11.897	26.029	6606.34	-381.16	1033.20	504.58	0.00	
6807.14	11.897	26.029	6687.70	-386.84	1048.60	512.10	0.00	End of Tangent
6824.00†	11.266	18.232	6704.21	-387.75	1051.72	513.38	10.00	
6924.00†	12.479	328.428	6802.32	-383.01	1070.25	510.77	10.00	
7024.00†	19.549	301.944	6898.50	-361.14	1088.35	490.87	10.00	
7124.00†	28.394	290.253	6989.83	-322.80	1105.48	454.27	10.00	
7224.00†	37.785	283.899	7073.55	-269.16	1121.11	402.10	10.00	
7324.00†	47.397	279.799	7147.10	-201.85	1134.77	335.92	10.00	
7424.00†	57.115	276.809	7208.25	-122.91	1146.04	257.77	10.00	
7524.00†	66.890	274.417	7255.14	-34.75	1154.58	170.00	10.00	
7624.00†	76.697	272.352	7286.35	59.97	1160.13	75.29	10.00	
7724.00†	86.519	270.450	7300.92	158.35	1162.53	-23.48	10.00	
7759.43	90.000	269.791	7302.00 ¹	193.53	1162.60	-58.89	10.00	End of 3D Arc
7824.00†	90.000	269.791	7302.00	257.63	1162.36	-123.46	0.00	
7924.00†	90.000	269.791	7302.00	356.91	1162.00	-223.46	0.00	
8024.00†	90.000	269.791	7302.00	456.19	1161.64	-323.46	0.00	
8124.00†	90.000	269.791	7302.00	555.47	1161.27	-423.46	0.00	
8224.00†	90.000	269.791	7302.00	654.75	1160.91	-523.46	0.00	
8324.00†	90.000	269.791	7302.00	754.03	1160.54	-623.46	0.00	
8424.00†	90.000	269.791	7302.00	853.31	1160.18	-723.46	0.00	



Planned Wellpath Report

MEAD 2 (REV-B.0) PWP

Page 5 of 8



REFERENCE WELLPATH IDENTIFICATION

Operator	EXTRACTION OIL & GAS	Slot	SLOT#02 MEAD 2(1378'FNL & 403'FEL,SEC.09)
Area	COLORADO	Well	MEAD 2
Field	WELD COUNTY (NAD83/TRUE NORTH)	Wellbore	MEAD 2 PWB
Facility	SEC.09-T07N-R66W		

WELLPATH DATA (180 stations) † = interpolated/extrapolated station

MD [ft]	Inclination [°]	Azimuth [°]	TVD [ft]	Vert Sect [ft]	North [ft]	East [ft]	DLS [°/100ft]	Comments
8524.00†	90.000	269.791	7302.00	952.59	1159.82	-823.46	0.00	
8624.00†	90.000	269.791	7302.00	1051.87	1159.45	-923.45	0.00	
8724.00†	90.000	269.791	7302.00	1151.15	1159.09	-1023.45	0.00	
8824.00†	90.000	269.791	7302.00	1250.43	1158.72	-1123.45	0.00	
8924.00†	90.000	269.791	7302.00	1349.71	1158.36	-1223.45	0.00	
9024.00†	90.000	269.791	7302.00	1449.00	1157.99	-1323.45	0.00	
9124.00†	90.000	269.791	7302.00	1548.28	1157.63	-1423.45	0.00	
9224.00†	90.000	269.791	7302.00	1647.56	1157.27	-1523.45	0.00	
9324.00†	90.000	269.791	7302.00	1746.84	1156.90	-1623.45	0.00	
9424.00†	90.000	269.791	7302.00	1846.12	1156.54	-1723.45	0.00	
9524.00†	90.000	269.791	7302.00	1945.40	1156.17	-1823.45	0.00	
9624.00†	90.000	269.791	7302.00	2044.68	1155.81	-1923.45	0.00	
9724.00†	90.000	269.791	7302.00	2143.96	1155.44	-2023.45	0.00	
9824.00†	90.000	269.791	7302.00	2243.24	1155.08	-2123.45	0.00	
9924.00†	90.000	269.791	7302.00	2342.52	1154.72	-2223.45	0.00	
10024.00†	90.000	269.791	7302.00	2441.80	1154.35	-2323.45	0.00	
10124.00†	90.000	269.791	7302.00	2541.08	1153.99	-2423.44	0.00	
10224.00†	90.000	269.791	7302.00	2640.36	1153.62	-2523.44	0.00	
10324.00†	90.000	269.791	7302.00	2739.64	1153.26	-2623.44	0.00	
10424.00†	90.000	269.791	7302.00	2838.92	1152.89	-2723.44	0.00	
10524.00†	90.000	269.791	7302.00	2938.20	1152.53	-2823.44	0.00	
10624.00†	90.000	269.791	7302.00	3037.48	1152.17	-2923.44	0.00	
10724.00†	90.000	269.791	7302.00	3136.76	1151.80	-3023.44	0.00	
10824.00†	90.000	269.791	7302.00	3236.04	1151.44	-3123.44	0.00	
10924.00†	90.000	269.791	7302.00	3335.32	1151.07	-3223.44	0.00	
11024.00†	90.000	269.791	7302.00	3434.60	1150.71	-3323.44	0.00	
11124.00†	90.000	269.791	7302.00	3533.88	1150.35	-3423.44	0.00	
11224.00†	90.000	269.791	7302.00	3633.16	1149.98	-3523.44	0.00	
11324.00†	90.000	269.791	7302.00	3732.44	1149.62	-3623.44	0.00	
11424.00†	90.000	269.791	7302.00	3831.72	1149.25	-3723.44	0.00	



Planned Wellpath Report

MEAD 2 (REV-B.0) PWP

Page 6 of 8



REFERENCE WELLPATH IDENTIFICATION			
Operator	EXTRACTION OIL & GAS	Slot	SLOT#02 MEAD 2(1378'FNL & 403'FEL,SEC.09)
Area	COLORADO	Well	MEAD 2
Field	WELD COUNTY (NAD83/TRUE NORTH)	Wellbore	MEAD 2 PWB
Facility	SEC.09-T07N-R66W		

WELLPATH DATA (180 stations) † = interpolated/extrapolated station								
MD [ft]	Inclination [°]	Azimuth [°]	TVD [ft]	Vert Sect [ft]	North [ft]	East [ft]	DLS [°/100ft]	Comments
11524.00†	90.000	269.791	7302.00	3931.00	1148.89	-3823.44	0.00	
11624.00†	90.000	269.791	7302.00	4030.28	1148.52	-3923.43	0.00	
11724.00†	90.000	269.791	7302.00	4129.56	1148.16	-4023.43	0.00	
11824.00†	90.000	269.791	7302.00	4228.84	1147.80	-4123.43	0.00	
11924.00†	90.000	269.791	7302.00	4328.12	1147.43	-4223.43	0.00	
12024.00†	90.000	269.791	7302.00	4427.40	1147.07	-4323.43	0.00	
12124.00†	90.000	269.791	7302.00	4526.68	1146.70	-4423.43	0.00	
12224.00†	90.000	269.791	7302.00	4625.96	1146.34	-4523.43	0.00	
12324.00†	90.000	269.791	7302.00	4725.24	1145.97	-4623.43	0.00	
12424.00†	90.000	269.791	7302.00	4824.52	1145.61	-4723.43	0.00	
12524.00†	90.000	269.791	7302.00	4923.80	1145.25	-4823.43	0.00	
12624.00†	90.000	269.791	7302.00	5023.08	1144.88	-4923.43	0.00	
12724.00†	90.000	269.791	7302.00	5122.36	1144.52	-5023.43	0.00	
12824.00†	90.000	269.791	7302.00	5221.64	1144.15	-5123.43	0.00	
12924.00†	90.000	269.791	7302.00	5320.92	1143.79	-5223.43	0.00	
13024.00†	90.000	269.791	7302.00	5420.20	1143.43	-5323.43	0.00	
13124.00†	90.000	269.791	7302.00	5519.48	1143.06	-5423.42	0.00	
13224.00†	90.000	269.791	7302.00	5618.76	1142.70	-5523.42	0.00	
13324.00†	90.000	269.791	7302.00	5718.04	1142.33	-5623.42	0.00	
13424.00†	90.000	269.791	7302.00	5817.32	1141.97	-5723.42	0.00	
13524.00†	90.000	269.791	7302.00	5916.60	1141.60	-5823.42	0.00	
13624.00†	90.000	269.791	7302.00	6015.88	1141.24	-5923.42	0.00	
13724.00†	90.000	269.791	7302.00	6115.16	1140.88	-6023.42	0.00	
13824.00†	90.000	269.791	7302.00	6214.45	1140.51	-6123.42	0.00	
13924.00†	90.000	269.791	7302.00	6313.73	1140.15	-6223.42	0.00	
14024.00†	90.000	269.791	7302.00	6413.01	1139.78	-6323.42	0.00	
14124.00†	90.000	269.791	7302.00	6512.29	1139.42	-6423.42	0.00	
14224.00†	90.000	269.791	7302.00	6611.57	1139.05	-6523.42	0.00	
14324.00†	90.000	269.791	7302.00	6710.85	1138.69	-6623.42	0.00	
14424.00†	90.000	269.791	7302.00	6810.13	1138.33	-6723.42	0.00	



Planned Wellpath Report

MEAD 2 (REV-B.0) PWP

Page 7 of 8



REFERENCE WELLPATH IDENTIFICATION

Operator	EXTRACTION OIL & GAS	Slot	SLOT#02 MEAD 2(1378'FNL & 403'FEL,SEC.09)
Area	COLORADO	Well	MEAD 2
Field	WELD COUNTY (NAD83/TRUE NORTH)	Wellbore	MEAD 2 PWB
Facility	SEC.09-T07N-R66W		

WELLPATH DATA (180 stations) † = interpolated/extrapolated station

MD [ft]	Inclination [°]	Azimuth [°]	TVD [ft]	Vert Sect [ft]	North [ft]	East [ft]	DLS [°/100ft]	Comments
14524.00†	90.000	269.791	7302.00	6909.41	1137.96	-6823.42	0.00	
14624.00†	90.000	269.791	7302.00	7008.69	1137.60	-6923.41	0.00	
14724.00†	90.000	269.791	7302.00	7107.97	1137.23	-7023.41	0.00	
14824.00†	90.000	269.791	7302.00	7207.25	1136.87	-7123.41	0.00	
14924.00†	90.000	269.791	7302.00	7306.53	1136.50	-7223.41	0.00	
15024.00†	90.000	269.791	7302.00	7405.81	1136.14	-7323.41	0.00	
15124.00†	90.000	269.791	7302.00	7505.09	1135.78	-7423.41	0.00	
15224.00†	90.000	269.791	7302.00	7604.37	1135.41	-7523.41	0.00	
15324.00†	90.000	269.791	7302.00	7703.65	1135.05	-7623.41	0.00	
15424.00†	90.000	269.791	7302.00	7802.93	1134.68	-7723.41	0.00	
15524.00†	90.000	269.791	7302.00	7902.21	1134.32	-7823.41	0.00	
15624.00†	90.000	269.791	7302.00	8001.49	1133.96	-7923.41	0.00	
15724.00†	90.000	269.791	7302.00	8100.77	1133.59	-8023.41	0.00	
15824.00†	90.000	269.791	7302.00	8200.05	1133.23	-8123.41	0.00	
15924.00†	90.000	269.791	7302.00	8299.33	1132.86	-8223.41	0.00	
16024.00†	90.000	269.791	7302.00	8398.61	1132.50	-8323.41	0.00	
16124.00†	90.000	269.791	7302.00	8497.89	1132.13	-8423.40	0.00	
16224.00†	90.000	269.791	7302.00	8597.17	1131.77	-8523.40	0.00	
16324.00†	90.000	269.791	7302.00	8696.45	1131.41	-8623.40	0.00	
16424.00†	90.000	269.791	7302.00	8795.73	1131.04	-8723.40	0.00	
16524.00†	90.000	269.791	7302.00	8895.01	1130.68	-8823.40	0.00	
16624.00†	90.000	269.791	7302.00	8994.29	1130.31	-8923.40	0.00	
16724.00†	90.000	269.791	7302.00	9093.57	1129.95	-9023.40	0.00	
16824.00†	90.000	269.791	7302.00	9192.85	1129.58	-9123.40	0.00	
16924.00†	90.000	269.791	7302.00	9292.13	1129.22	-9223.40	0.00	
17024.00†	90.000	269.791	7302.00	9391.41	1128.86	-9323.40	0.00	
17124.00†	90.000	269.791	7302.00	9490.69	1128.49	-9423.40	0.00	
17224.00†	90.000	269.791	7302.00	9589.97	1128.13	-9523.40	0.00	
17324.00†	90.000	269.791	7302.00	9689.25	1127.76	-9623.40	0.00	
17343.86	90.000	269.791	7302.00 ²	9708.97	1127.69	-9643.25	0.00	End of Tangent



Planned Wellpath Report

MEAD 2 (REV-B.0) PWP

Page 8 of 8



REFERENCE WELLPATH IDENTIFICATION

Operator	EXTRACTION OIL & GAS	Slot	SLOT#02 MEAD 2(1378'FNL & 403'FEL,SEC.09)
Area	COLORADO	Well	MEAD 2
Field	WELD COUNTY (NAD83/TRUE NORTH)	Wellbore	MEAD 2 PWB
Facility	SEC.09-T07N-R66W		

HOLE & CASING SECTIONS - Ref Wellbore: MEAD 2 PWB Ref Wellpath: MEAD 2 (REV-B.0) PWP

String/Diameter	Start MD [ft]	End MD [ft]	Interval [ft]	Start TVD [ft]	End TVD [ft]	Start N/S [ft]	Start E/W [ft]	End N/S [ft]	End E/W [ft]
7in Casing Intermediate	24.00	7759.43	7735.43	24.00	7302.00	0.00	0.00	1162.60	-58.89

TARGETS

Name	MD [ft]	TVD [ft]	North [ft]	East [ft]	Grid East [US ft]	Grid North [US ft]	Latitude	Longitude	Shape
MEAD PAD SECTION 08		0.00	26.27	0.26	3201342.85	1459836.85	40°35'36.208"N	104°46'29.986"W	polygon
MEAD PAD SECTION 09		0.00	26.27	0.26	3201342.85	1459836.85	40°35'36.208"N	104°46'29.986"W	polygon
MEAD PAD SOUTH 1/2 SECTION 04		0.00	26.27	0.26	3201342.85	1459836.85	40°35'36.208"N	104°46'29.986"W	polygon
MEAD PAD SOUTH 1/2 SECTION 05		0.00	26.27	0.26	3201342.85	1459836.85	40°35'36.208"N	104°46'29.986"W	polygon
MEAD 2 BHL ON PLAT REV-1 (93'FSL & 460'FWL,SEC.05)		7302.00	1240.99	-9637.93	3191695.31	1460972.70	40°35'48.192"N	104°48'34.927"W	point
2) MEAD 2 BHL ON PLAT REV-2 (20'FNL & 460'FWL,SEC.08)	17343.86	7302.00	1127.69	-9643.25	3191690.92	1460859.36	40°35'47.072"N	104°48'34.996"W	point
1) MEAD 2 LANDING	7759.43	7302.00	1162.60	-58.89	3201274.41	1460972.62	40°35'47.436"N	104°46'30.752"W	point
MEAD PAD NORTH 1/4 HARDLINES		7505.00	26.27	0.26	3201342.85	1459836.85	40°35'36.208"N	104°46'29.986"W	polygon

SURVEY PROGRAM - Ref Wellbore: MEAD 2 PWB Ref Wellpath: MEAD 2 (REV-B.0) PWP

Start MD [ft]	End MD [ft]	Positional Uncertainty Model	Log Name/Comment	Wellbore
24.00	18000.00	NaviTrak (Standard)		MEAD 2 PWB