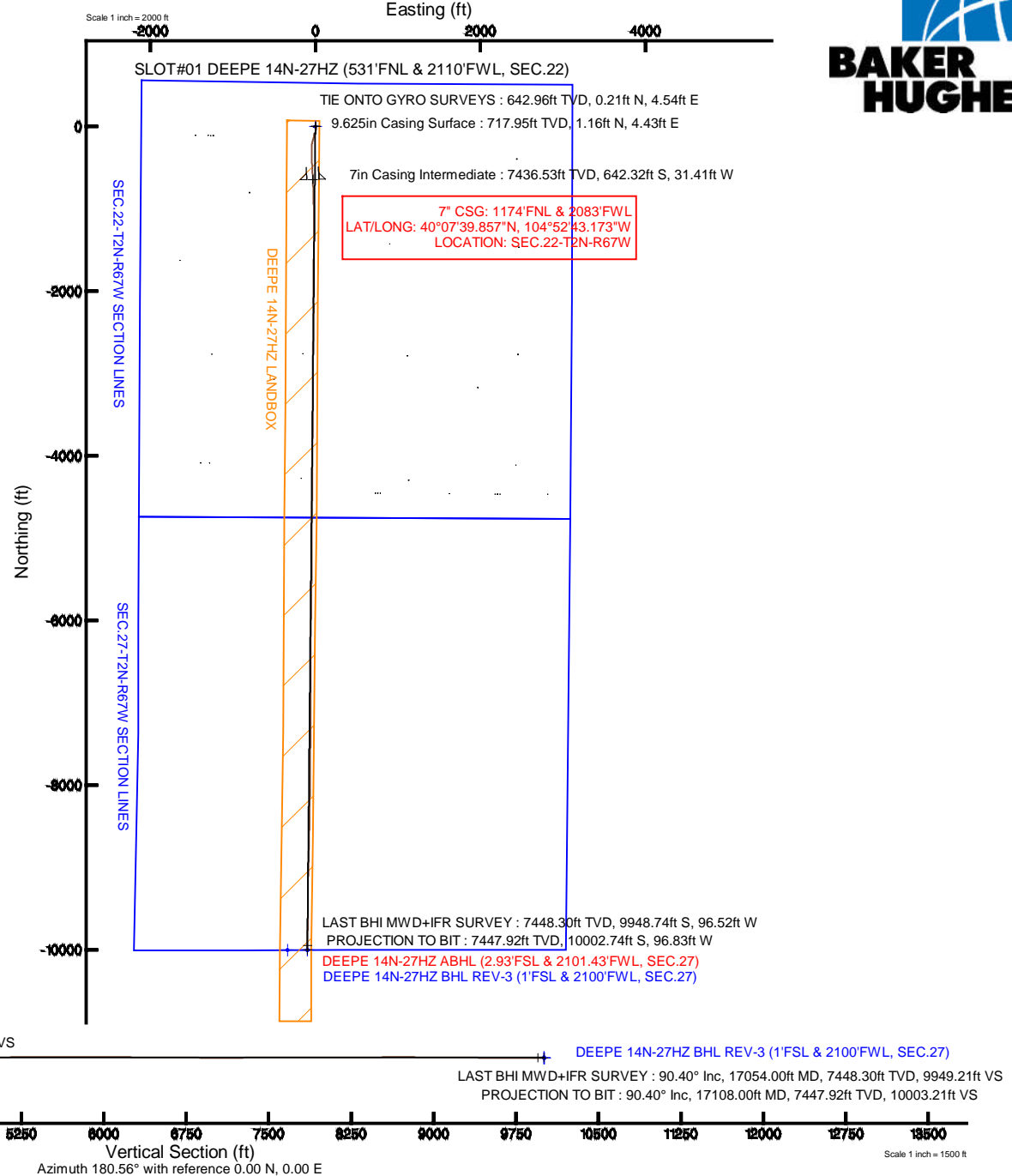
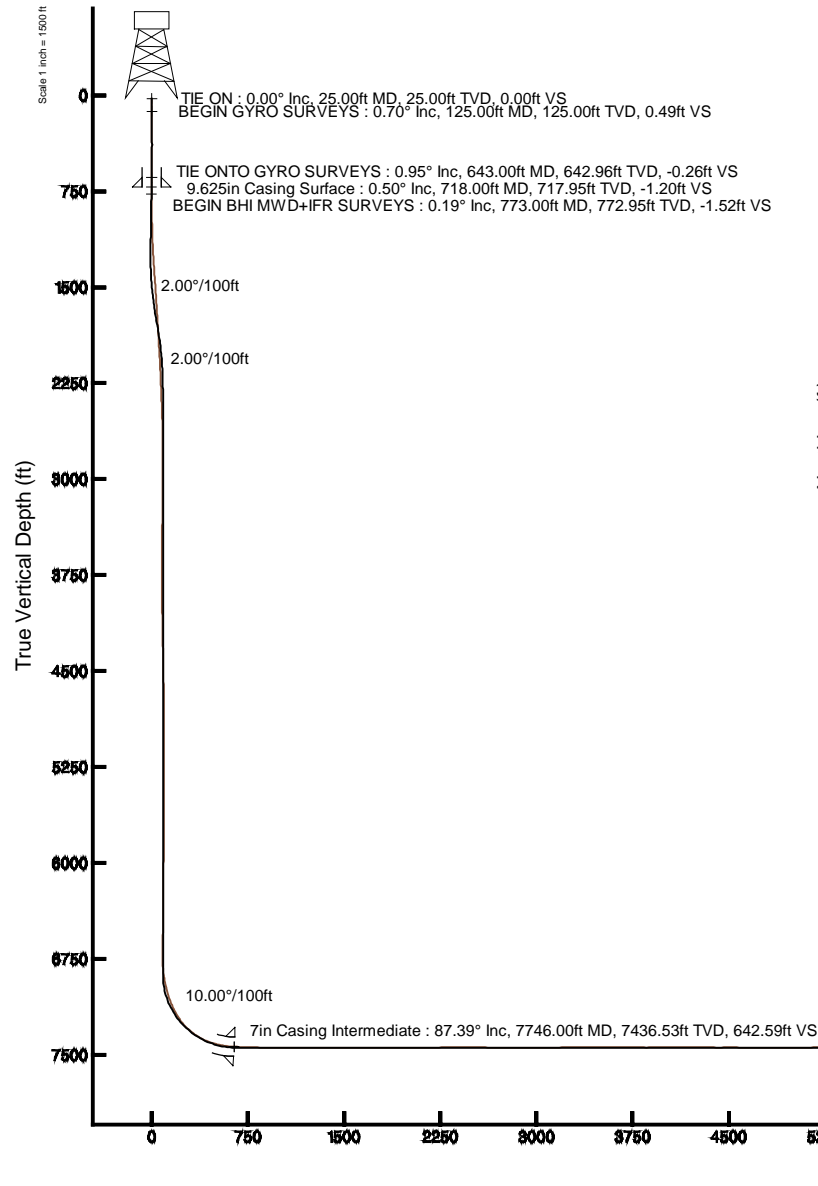


KERR-MCGEE OIL & GAS ONSHORE LP

Location: COLORADO Slot: SLOT#01 DEEPE 14N-27HZ (531'FNL & 2110'FWL, SEC.22)
 Field: WELD COUNTY (KERR MCGEE) Well: DEEPE 14N-27HZ
 Facility: SEC.22-T2N-R67W Wellbore: DEEPE 14N-27HZ PWB

Plot reference wellpath is DEEPE 14N-27HZ (REV-B.0) PWP

True vertical depths are referenced to PRECISION 595 (25KB) (RKB)	Grid System: NAD83 / Lambert Colorado SP, Northern Zone (501), US feet
Measured depths are referenced to PRECISION 595 (25KB) (RKB)	North Reference: True north
PRECISION 595 (25KB) (RKB) to Mean Sea Level: 5032 feet	Scale: True distance
Mean Sea Level to Mud line (At Slot: SLOT#01 DEEPE 14N-27HZ (531'FNL & 2110'FWL, SEC.22)): 0 feet	Depths are in feet
Coordinates are in feet referenced to Slot	Created by: robiale01 on 14/Jul/2014



Actual Wellpath Report

DEEPE 14N-27HZ AWP

Page 1 of 6

REFERENCE WELLPATH IDENTIFICATION

Operator	KERR-MCGEE OIL & GAS ONSHORE LP	Slot	SLOT#01 DEEPE 14N-27HZ (531'FNL & 2110'FWL, SEC.22)
Area	COLORADO	Well	DEEPE 14N-27HZ
Field	WELD COUNTY (KERR MCGEE)	Wellbore	DEEPE 14N-27HZ AWB
Facility	SEC.22-T2N-R67W		

REPORT SETUP INFORMATION

Projection System	NAD83 / Lambert Colorado SP, Northern Zone (501), US feet	Software System	WellArchitect® 4.0.0
North Reference	True	User	Robiale01
Scale	0.999959	Report Generated	14/Jul/2014 at 15:14
Convergence at slot	n/a	Database/Source file	WellArchitectDB/DEEPE_14N-27HZ_AWB.xml

WELLPATH LOCATION

	Local coordinates		Grid coordinates		Geographic coordinates	
	North[ft]	East[ft]	Easting[US ft]	Northing[US ft]	Latitude	Longitude
Slot Location	0.00	0.00	3173770.28	1290629.95	40°07'46.204"N	104°52'42.769"W
Facility Reference Pt			3173770.27	1290629.95	40°07'46.204"N	104°52'42.769"W
Field Reference Pt			3197771.84	1268891.29	40°04'09.600"N	104°47'36.000"W

WELLPATH DATUM

Calculation method	Minimum curvature	PRECISION 595 (25'KB) (RKB) to Facility Vertical Datum	5032.00ft
Horizontal Reference Pt	Slot	PRECISION 595 (25'KB) (RKB) to Mean Sea Level	5032.00ft
Vertical Reference Pt	PRECISION 595 (25'KB) (RKB)	PRECISION 595 (25'KB) (RKB) to Mud Line at Slot (SLOT#01 DEEPE 14N-27HZ (531'FNL & 2110'FWL, SEC.22))	5032.00ft
MD Reference Pt	PRECISION 595 (25'KB) (RKB)	Section Origin	N 0.00, E 0.00 ft
Field Vertical Reference	Mean Sea Level	Section Azimuth	180.55°

Actual Wellpath Report

DEEPE 14N-27HZ AWP

Page 2 of 6

REFERENCE WELLPATH IDENTIFICATION			
Operator	KERR-MCGEE OIL & GAS ONSHORE LP	Slot	SLOT#01 DEEPE 14N-27HZ (531'FNL & 2110'FWL, SEC.22)
Area	COLORADO	Well	DEEPE 14N-27HZ
Field	WELD COUNTY (KERR MCGEE)	Wellbore	DEEPE 14N-27HZ AWB
Facility	SEC.22-T2N-R67W		

WELLPATH DATA (129 stations) † = interpolated/extrapolated station										
MD [ft]	Inclination [°]	Azimuth [°]	TVD [ft]	Vert Sect [ft]	North [ft]	East [ft]	Latitude	Longitude	DLS [°/100ft]	Comments
0.00†	0.000	143.430	0.00	0.00	0.00	0.00	40°07'46.204"N	104°52'42.769"W	0.00	
25.00	0.000	143.430	25.00	0.00	0.00	0.00	40°07'46.204"N	104°52'42.769"W	0.00	TIE ON
125.00	0.700	143.430	125.00	0.49	-0.49	0.36	40°07'46.199"N	104°52'42.764"W	0.70	BEGIN GYRO SURVEYS
225.00	0.640	128.540	224.99	1.32	-1.33	1.16	40°07'46.191"N	104°52'42.754"W	0.18	
325.00	0.550	115.920	324.99	1.87	-1.89	2.03	40°07'46.185"N	104°52'42.743"W	0.16	
425.00	0.730	80.190	424.98	1.96	-1.99	3.09	40°07'46.184"N	104°52'42.729"W	0.43	
525.00	0.720	38.230	524.97	1.35	-1.39	4.11	40°07'46.190"N	104°52'42.716"W	0.52	
625.00	0.930	3.090	624.96	0.04	-0.08	4.54	40°07'46.203"N	104°52'42.711"W	0.54	
643.00	0.950	355.240	642.96	-0.26	0.21	4.54	40°07'46.206"N	104°52'42.711"W	0.72	TIE ONTO GYRO SURVEYS
773.00	0.190	331.750	772.95	-1.52	1.48	4.35	40°07'46.219"N	104°52'42.713"W	0.60	BEGIN BHI MWD+IFR SURVEYS
863.00	0.530	203.910	862.95	-1.27	1.23	4.11	40°07'46.216"N	104°52'42.716"W	0.74	
953.00	1.760	178.600	952.93	0.50	-0.54	3.97	40°07'46.199"N	104°52'42.718"W	1.45	
1042.00	1.930	187.580	1041.89	3.35	-3.39	3.81	40°07'46.171"N	104°52'42.720"W	0.38	
1132.00	1.740	169.410	1131.84	6.19	-6.23	3.86	40°07'46.142"N	104°52'42.719"W	0.68	
1222.00	3.420	175.110	1221.75	10.21	-10.25	4.34	40°07'46.103"N	104°52'42.713"W	1.89	
1312.00	3.460	167.470	1311.58	15.53	-15.58	5.16	40°07'46.050"N	104°52'42.703"W	0.51	
1402.00	4.170	168.440	1401.38	21.37	-21.43	6.40	40°07'45.992"N	104°52'42.687"W	0.79	
1491.00	3.930	190.040	1490.17	27.54	-27.61	6.52	40°07'45.931"N	104°52'42.685"W	1.72	
1581.00	3.810	188.200	1579.96	33.55	-33.60	5.55	40°07'45.872"N	104°52'42.697"W	0.19	
1671.00	3.640	184.880	1669.77	39.36	-39.41	4.88	40°07'45.815"N	104°52'42.706"W	0.31	
1760.00	3.360	184.840	1758.61	44.78	-44.82	4.42	40°07'45.761"N	104°52'42.712"W	0.31	
1850.00	3.320	184.610	1848.45	50.01	-50.05	3.99	40°07'45.709"N	104°52'42.718"W	0.05	
1940.00	3.300	182.900	1938.30	55.20	-55.23	3.65	40°07'45.658"N	104°52'42.722"W	0.11	
2030.00	3.010	184.860	2028.17	60.14	-60.18	3.32	40°07'45.609"N	104°52'42.726"W	0.34	
2120.00	2.940	186.130	2118.05	64.79	-64.83	2.87	40°07'45.563"N	104°52'42.732"W	0.11	
2210.00	2.580	188.480	2207.94	69.10	-69.12	2.33	40°07'45.521"N	104°52'42.739"W	0.42	
2299.00	2.380	190.290	2296.86	72.90	-72.92	1.70	40°07'45.483"N	104°52'42.747"W	0.24	
2389.00	2.270	191.940	2386.78	76.49	-76.51	1.00	40°07'45.448"N	104°52'42.756"W	0.14	
2479.00	2.100	197.790	2476.72	79.81	-79.82	0.13	40°07'45.415"N	104°52'42.767"W	0.31	
2569.00	1.820	203.660	2566.67	82.70	-82.70	-0.95	40°07'45.387"N	104°52'42.781"W	0.38	
2659.00	1.670	214.900	2656.62	85.10	-85.08	-2.27	40°07'45.363"N	104°52'42.798"W	0.41	
2749.00	0.820	259.390	2746.60	86.31	-86.28	-3.66	40°07'45.351"N	104°52'42.816"W	1.36	
2838.00	0.640	299.210	2835.60	86.19	-86.15	-4.72	40°07'45.353"N	104°52'42.830"W	0.59	
3018.00	0.750	305.460	3015.58	85.04	-84.98	-6.55	40°07'45.364"N	104°52'42.853"W	0.07	
3256.00	0.850	320.040	3253.56	82.80	-82.72	-8.96	40°07'45.387"N	104°52'42.884"W	0.09	
3615.00	0.540	295.460	3612.53	80.07	-79.95	-12.19	40°07'45.414"N	104°52'42.926"W	0.12	
3974.00	0.700	137.680	3971.53	80.96	-80.85	-12.24	40°07'45.405"N	104°52'42.927"W	0.34	
4333.00	1.480	175.750	4330.46	87.19	-87.09	-10.42	40°07'45.343"N	104°52'42.903"W	0.29	
4692.00	0.370	135.460	4689.41	92.63	-92.54	-9.27	40°07'45.289"N	104°52'42.888"W	0.34	
5051.00	0.400	133.980	5048.40	94.31	-94.24	-7.55	40°07'45.273"N	104°52'42.866"W	0.01	
5411.00	0.350	333.230	5408.40	94.19	-94.13	-7.14	40°07'45.274"N	104°52'42.861"W	0.21	
5770.00	0.070	11.170	5767.40	93.00	-92.94	-7.60	40°07'45.286"N	104°52'42.867"W	0.08	
6129.00	1.080	48.180	6126.38	90.51	-90.46	-5.03	40°07'45.310"N	104°52'42.834"W	0.29	
6488.00	0.320	351.450	6485.35	87.24	-87.22	-2.66	40°07'45.342"N	104°52'42.803"W	0.26	
6712.00	0.630	304.630	6709.34	85.93	-85.90	-3.77	40°07'45.355"N	104°52'42.817"W	0.21	

Actual Wellpath Report

DEEPE 14N-27HZ AWP

Page 3 of 6

REFERENCE WELLPATH IDENTIFICATION

Operator	KERR-MCGEE OIL & GAS ONSHORE LP	Slot	SLOT#01 DEEPE 14N-27HZ (531'FNL & 2110'FWL, SEC.22)
Area	COLORADO	Well	DEEPE 14N-27HZ
Field	WELD COUNTY (KERR MCGEE)	Wellbore	DEEPE 14N-27HZ AWB
Facility	SEC.22-T2N-R67W		

WELLPATH DATA (129 stations) † = interpolated/extrapolated station

MD [ft]	Inclination [°]	Azimuth [°]	TVD [ft]	Vert Sect [ft]	North [ft]	East [ft]	Latitude	Longitude	DLS [°/100ft]	Comments
6757.00	0.680	287.040	6754.34	85.72	-85.68	-4.22	40°07'45.357"N	104°52'42.823"W	0.46	
6802.00	3.030	212.180	6799.32	86.65	-86.61	-5.11	40°07'45.348"N	104°52'42.835"W	6.50	
6847.00	5.820	198.550	6844.18	89.84	-89.78	-6.47	40°07'45.317"N	104°52'42.852"W	6.58	
6892.00	8.620	202.290	6888.82	95.14	-95.06	-8.48	40°07'45.265"N	104°52'42.878"W	6.31	
6937.00	11.580	199.630	6933.12	102.54	-102.44	-11.28	40°07'45.192"N	104°52'42.914"W	6.66	
6982.00	14.790	198.120	6976.92	112.29	-112.15	-14.58	40°07'45.096"N	104°52'42.957"W	7.17	
7027.00	18.040	196.420	7020.09	124.47	-124.30	-18.34	40°07'44.976"N	104°52'43.005"W	7.30	
7072.00	20.750	196.300	7062.53	138.85	-138.64	-22.54	40°07'44.834"N	104°52'43.059"W	6.02	
7116.00	23.210	199.270	7103.33	154.57	-154.31	-27.59	40°07'44.679"N	104°52'43.124"W	6.13	
7162.00	26.400	196.910	7145.08	172.97	-172.65	-33.56	40°07'44.498"N	104°52'43.201"W	7.26	
7206.00	30.550	191.540	7183.75	193.34	-192.98	-38.65	40°07'44.297"N	104°52'43.267"W	11.07	
7251.00	35.580	188.990	7221.46	217.54	-217.13	-42.98	40°07'44.058"N	104°52'43.322"W	11.60	
7296.00	40.710	184.340	7256.84	245.16	-244.72	-46.14	40°07'43.786"N	104°52'43.363"W	13.06	
7341.00	45.600	181.260	7289.66	275.90	-275.45	-47.61	40°07'43.482"N	104°52'43.382"W	11.83	
7386.00	51.060	179.600	7319.57	309.49	-309.05	-47.84	40°07'43.150"N	104°52'43.385"W	12.44	
7431.00	56.480	177.190	7346.16	345.75	-345.31	-46.80	40°07'42.792"N	104°52'43.371"W	12.79	
7476.00	61.300	176.980	7369.40	384.19	-383.78	-44.84	40°07'42.411"N	104°52'43.346"W	10.72	
7521.00	65.610	176.830	7389.51	424.36	-423.97	-42.66	40°07'42.014"N	104°52'43.318"W	9.58	
7566.00	71.260	177.440	7406.04	466.12	-465.75	-40.58	40°07'41.601"N	104°52'43.291"W	12.62	
7610.00	76.650	176.790	7418.20	508.31	-507.96	-38.45	40°07'41.184"N	104°52'43.264"W	12.33	
7655.00	80.480	175.750	7427.12	552.29	-551.97	-35.57	40°07'40.749"N	104°52'43.227"W	8.81	
7714.00	85.210	178.130	7434.47	610.69	-610.40	-32.46	40°07'40.172"N	104°52'43.187"W	8.96	
7746.00†	87.389	178.130	7436.53	642.59	-642.32	-31.41	40°07'39.857"N	104°52'43.173"W	6.81	7" CASING POINT
7756.00	88.070	178.130	7436.93	652.58	-652.31	-31.09	40°07'39.758"N	104°52'43.169"W	6.81	
7804.00	88.080	177.450	7438.54	700.49	-700.24	-29.24	40°07'39.284"N	104°52'43.145"W	1.42	
7894.00	88.450	177.850	7441.27	790.34	-790.13	-25.55	40°07'38.396"N	104°52'43.098"W	0.61	
8074.00	89.570	179.280	7444.38	970.19	-970.03	-21.04	40°07'36.618"N	104°52'43.040"W	1.01	
8254.00	89.720	178.630	7445.49	1150.12	-1150.00	-17.76	40°07'34.840"N	104°52'42.998"W	0.37	
8433.00	89.630	180.650	7446.51	1329.08	-1328.98	-16.64	40°07'33.071"N	104°52'42.983"W	1.13	
8613.00	90.590	181.060	7446.16	1509.08	-1508.96	-19.32	40°07'31.292"N	104°52'43.018"W	0.58	
8792.00	90.370	181.190	7444.66	1688.06	-1687.92	-22.84	40°07'29.524"N	104°52'43.063"W	0.14	
8882.00	90.030	180.650	7444.35	1778.06	-1777.91	-24.28	40°07'28.635"N	104°52'43.082"W	0.71	
9062.00	89.350	179.160	7445.32	1958.04	-1957.90	-23.98	40°07'26.856"N	104°52'43.078"W	0.91	
9241.00	91.200	179.240	7444.46	2136.98	-2136.87	-21.48	40°07'25.087"N	104°52'43.046"W	1.03	
9421.00	90.800	181.170	7441.32	2316.94	-2316.83	-22.13	40°07'23.309"N	104°52'43.054"W	1.09	
9601.00	89.260	181.100	7441.23	2496.93	-2496.79	-25.69	40°07'21.530"N	104°52'43.100"W	0.86	
9780.00	89.780	181.390	7442.73	2675.91	-2675.74	-29.58	40°07'19.762"N	104°52'43.150"W	0.33	
9960.00	90.120	180.430	7442.88	2855.90	-2855.72	-32.44	40°07'17.983"N	104°52'43.187"W	0.57	
10140.00	89.690	179.230	7443.18	3035.88	-3035.71	-31.91	40°07'16.205"N	104°52'43.180"W	0.71	
10319.00	91.080	180.640	7441.98	3214.86	-3214.70	-31.70	40°07'14.436"N	104°52'43.177"W	1.11	
10499.00	90.460	180.440	7439.56	3394.84	-3394.68	-33.40	40°07'12.657"N	104°52'43.199"W	0.36	
10678.00	89.600	179.940	7439.47	3573.83	-3573.67	-33.99	40°07'10.889"N	104°52'43.207"W	0.56	
10858.00	89.070	180.290	7441.56	3753.82	-3753.66	-34.35	40°07'09.110"N	104°52'43.211"W	0.35	
11038.00	90.620	180.910	7442.04	3933.81	-3933.64	-36.24	40°07'07.331"N	104°52'43.235"W	0.93	
11217.00	90.590	179.650	7440.15	4112.79	-4112.63	-37.11	40°07'05.563"N	104°52'43.247"W	0.70	

Actual Wellpath Report

DEEPE 14N-27HZ AWP

Page 4 of 6

REFERENCE WELLPATH IDENTIFICATION			
Operator	KERR-MCGEE OIL & GAS ONSHORE LP	Slot	SLOT#01 DEEPE 14N-27HZ (531'FNL & 2110'FWL, SEC.22)
Area	COLORADO	Well	DEEPE 14N-27HZ
Field	WELD COUNTY (KERR MCGEE)	Wellbore	DEEPE 14N-27HZ AWB
Facility	SEC.22-T2N-R67W		

WELLPATH DATA (129 stations)										
MD [ft]	Inclination [°]	Azimuth [°]	TVD [ft]	Vert Sect	North [ft]	East [ft]	Latitude	Longitude	DLS [°/100ft]	Comments
11397.00	88.800	181.100	7441.11	4292.78	-4292.61	-38.29	40°07'03.784"N	104°52'43.262"W	1.28	
11576.00	90.430	180.460	7442.31	4471.77	-4471.58	-40.73	40°07'02.015"N	104°52'43.293"W	0.98	
11756.00	88.830	180.030	7443.48	4651.75	-4651.57	-41.50	40°07'00.237"N	104°52'43.303"W	0.92	
11935.00	89.510	180.450	7446.07	4830.73	-4830.55	-42.25	40°06'58.468"N	104°52'43.313"W	0.45	
12115.00	91.200	180.680	7444.95	5010.72	-5010.53	-44.02	40°06'56.689"N	104°52'43.336"W	0.95	
12295.00	90.890	179.710	7441.67	5190.68	-5190.50	-44.64	40°06'54.911"N	104°52'43.344"W	0.57	
12474.00	89.750	180.000	7440.67	5369.66	-5369.49	-44.18	40°06'53.142"N	104°52'43.338"W	0.66	
12654.00	90.120	182.310	7440.88	5549.64	-5549.44	-47.81	40°06'51.364"N	104°52'43.384"W	1.30	
12833.00	89.720	180.490	7441.13	5728.61	-5728.38	-52.18	40°06'49.596"N	104°52'43.441"W	1.04	
13013.00	89.850	180.520	7441.80	5908.61	-5908.37	-53.77	40°06'47.817"N	104°52'43.461"W	0.07	
13193.00	90.120	180.740	7441.85	6088.61	-6088.36	-55.75	40°06'46.038"N	104°52'43.487"W	0.19	
13372.00	89.360	180.760	7442.66	6267.61	-6267.34	-58.09	40°06'44.269"N	104°52'43.517"W	0.42	
13552.00	89.480	180.430	7444.48	6447.60	-6447.32	-59.96	40°06'42.491"N	104°52'43.541"W	0.20	
13731.00	89.450	179.570	7446.15	6626.58	-6626.31	-59.96	40°06'40.722"N	104°52'43.541"W	0.48	
13911.00	89.880	180.110	7447.21	6806.56	-6806.31	-59.46	40°06'38.943"N	104°52'43.534"W	0.38	
14091.00	89.540	179.080	7448.12	6986.53	-6986.30	-58.19	40°06'37.165"N	104°52'43.518"W	0.60	
14180.00	89.660	179.990	7448.74	7075.52	-7075.29	-57.46	40°06'36.285"N	104°52'43.509"W	1.03	
14270.00	90.310	179.110	7448.76	7165.50	-7165.29	-56.76	40°06'35.396"N	104°52'43.499"W	1.22	
14360.00	91.260	180.700	7447.53	7255.48	-7255.27	-56.61	40°06'34.507"N	104°52'43.498"W	2.06	
14450.00	91.260	180.420	7445.55	7345.46	-7345.25	-57.49	40°06'33.617"N	104°52'43.509"W	0.31	
14629.00	89.630	181.470	7444.16	7524.44	-7524.21	-60.44	40°06'31.849"N	104°52'43.547"W	1.08	
14809.00	88.830	180.770	7446.58	7704.41	-7704.16	-63.96	40°06'30.071"N	104°52'43.592"W	0.59	
14899.00	90.400	180.670	7447.18	7794.41	-7794.14	-65.09	40°06'29.181"N	104°52'43.607"W	1.75	
14989.00	90.980	180.410	7446.10	7884.40	-7884.13	-65.94	40°06'28.292"N	104°52'43.618"W	0.71	
15079.00	90.090	180.160	7445.26	7974.40	-7974.13	-66.38	40°06'27.403"N	104°52'43.623"W	1.03	
15168.00	90.030	180.690	7445.17	8063.40	-8063.12	-67.04	40°06'26.523"N	104°52'43.632"W	0.60	
15348.00	90.710	180.110	7444.00	8243.39	-8243.11	-68.30	40°06'24.745"N	104°52'43.648"W	0.50	
15438.00	90.190	181.110	7443.30	8333.39	-8333.11	-69.26	40°06'23.855"N	104°52'43.660"W	1.25	
15617.00	90.310	181.730	7442.52	8512.36	-8512.05	-73.70	40°06'22.087"N	104°52'43.717"W	0.35	
15797.00	90.190	181.520	7441.73	8692.33	-8691.97	-78.80	40°06'20.309"N	104°52'43.783"W	0.13	
15976.00	89.010	181.600	7442.98	8871.29	-8870.90	-83.67	40°06'18.541"N	104°52'43.846"W	0.66	
16155.00	89.010	180.590	7446.07	9050.26	-9049.84	-87.09	40°06'16.772"N	104°52'43.890"W	0.56	
16335.00	90.650	180.940	7446.61	9230.25	-9229.81	-89.50	40°06'14.994"N	104°52'43.921"W	0.93	
16514.00	88.830	180.370	7447.42	9409.24	-9408.79	-91.54	40°06'13.225"N	104°52'43.947"W	1.07	
16604.00	90.340	181.170	7448.07	9499.23	-9498.78	-92.75	40°06'12.336"N	104°52'43.963"W	1.90	
16784.00	89.100	179.670	7448.95	9679.22	-9678.76	-94.07	40°06'10.557"N	104°52'43.980"W	1.08	
16874.00	90.310	180.930	7449.41	9769.22	-9768.76	-94.54	40°06'09.668"N	104°52'43.986"W	1.94	
17054.00	90.400	180.330	7448.30	9949.21	-9948.74	-96.52	40°06'07.889"N	104°52'44.011"W	0.34	LAST BHI MWD+IFR SURVEY
17108.00	90.400	180.330	7447.92	10003.21	-10002.74	-96.83	40°06'07.356"N	104°52'44.015"W	0.00	PROJECTION TO BIT

Actual Wellpath Report

DEEPE 14N-27HZ AWP

Page 5 of 6

REFERENCE WELLPATH IDENTIFICATION

Operator	KERR-MCGEE OIL & GAS ONSHORE LP	Slot	SLOT#01 DEEPE 14N-27HZ (531'FNL & 2110'FWL, SEC.22)
Area	COLORADO	Well	DEEPE 14N-27HZ
Field	WELD COUNTY (KERR MCGEE)	Wellbore	DEEPE 14N-27HZ AWB
Facility	SEC.22-T2N-R67W		

HOLE & CASING SECTIONS - Ref Wellbore: DEEPE 14N-27HZ AWB Ref Wellpath: DEEPE 14N-27HZ AWP

String/Diameter	Start MD [ft]	End MD [ft]	Interval [ft]	Start TVD [ft]	End TVD [ft]	Start N/S [ft]	Start E/W [ft]	End N/S [ft]	End E/W [ft]
13.5in Open Hole	25.00	728.00	703.00	25.00	727.95	0.00	0.00	1.24	4.41
9.625in Casing Surface	25.00	718.00	693.00	25.00	717.95	0.00	0.00	1.16	4.43
8.75in Open Hole	728.00	7756.00	7028.00	727.95	7436.93	1.24	4.41	-652.31	-31.09
7in Casing Intermediate	25.00	7746.00	7721.00	25.00	7436.53	0.00	0.00	-642.32	-31.41
6.125in Open Hole	7756.00	17108.00	9352.00	7436.93	7447.92	-652.31	-31.09	-10002.74	-96.83

WELLPATH COMPOSITION - Ref Wellbore: DEEPE 14N-27HZ AWB Ref Wellpath: DEEPE 14N-27HZ AWP

Start MD [ft]	End MD [ft]	Positional Uncertainty Model	Log Name/Comment	Wellbore
25.00	643.00	Generic gyro - continuous (Standard)	MS GYRO SURVEYS <125-643>	DEEPE 14N-27HZ AWB
643.00	7714.00	NaviTrak (MAGCORR,IFR)	BHI NAVITRAK MWD+IFR 8 3/4" <773-7714>	DEEPE 14N-27HZ AWB
7714.00	17054.00	NaviTrak (MAGCORR,IFR)	BHI NAVITRAK MWD+IFR 6 1/8" <7756-17054>	DEEPE 14N-27HZ AWB
17054.00	17108.00	Blind Drilling (std)	Projection to bit	DEEPE 14N-27HZ AWB

Actual Wellpath Report

DEEPE 14N-27HZ AWP

Page 6 of 6

REFERENCE WELLPATH IDENTIFICATION

Operator	KERR-MCGEE OIL & GAS ONSHORE LP	Slot	SLOT#01 DEEPE 14N-27HZ (531'FNL & 2110'FWL, SEC.22)
Area	COLORADO	Well	DEEPE 14N-27HZ
Field	WELD COUNTY (KERR MCGEE)	Wellbore	DEEPE 14N-27HZ AWB
Facility	SEC.22-T2N-R67W		

WELLPATH COMMENTS

MD [ft]	Inclination [°]	Azimuth [°]	TVD [ft]	Comment
25.00	0.000	143.430	25.00	TIE ON
125.00	0.700	143.430	125.00	BEGIN GYRO SURVEYS
643.00	0.950	355.240	642.96	TIE ONTO GYRO SURVEYS
773.00	0.190	331.750	772.95	BEGIN BHI MWD+IFR SURVEYS
7746.00	87.389	178.130	7436.53	7" CASING POINT
17054.00	90.400	180.330	7448.30	LAST BHI MWD+IFR SURVEY
17108.00	90.400	180.330	7447.92	PROJECTION TO BIT