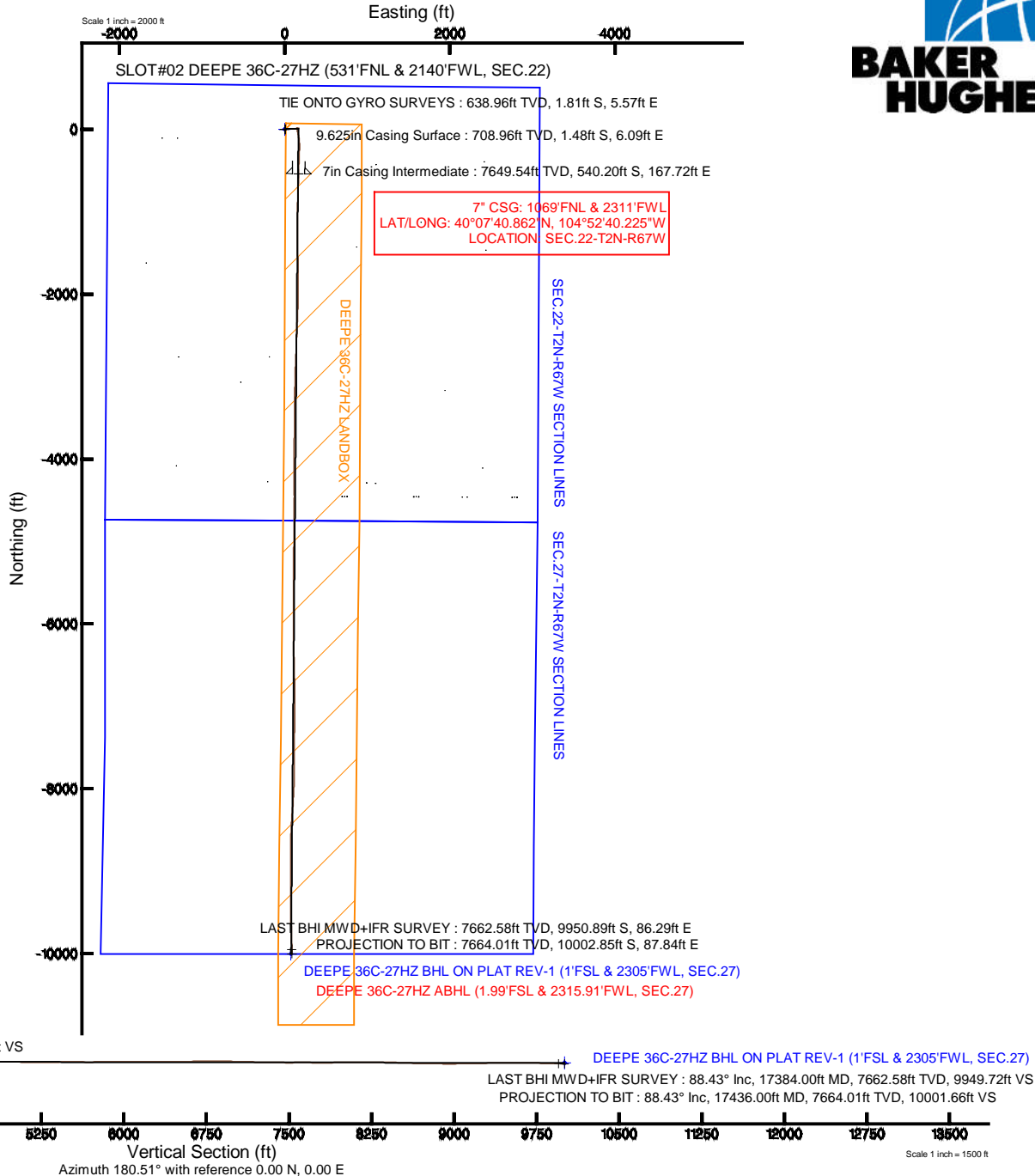
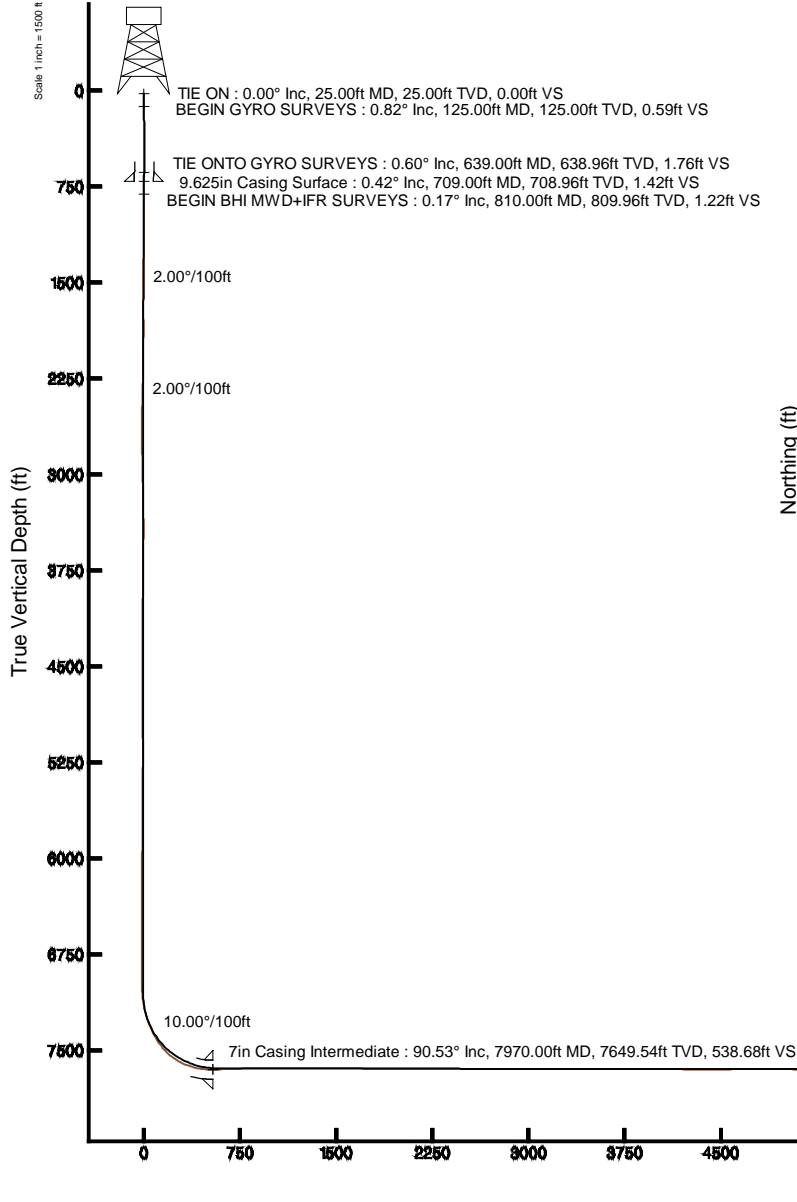


KERR-MCGEE OIL & GAS ONSHORE LP

Location: COLORADO Slot: SLOT#02 DEEPE 36C-27HZ (531'FNL & 2140'FWL, SEC.22)
 Field: WELD COUNTY (KERR MCGEE) Well: DEEPE 36C-27HZ
 Facility: SEC.22-T2N-R67W Wellbore: DEEPE 36C-27HZ PWB

Plot reference wellpath is DEEPE 36C-27HZ (REV-B.0) PWB

True vertical depths are referenced to PRECISION 595 (25KB) (RKB)	Grid System: NAD83 / Lambert Colorado SP, Northern Zone (501), US feet
Measured depths are referenced to PRECISION 595 (25KB) (RKB)	North Reference: True north
PRECISION 595 (25KB) (RKB) to Mean Sea Level: 5032 feet	Scale: True distance
Mean Sea Level to Mud line (At Slot: SLOT#02 DEEPE 36C-27HZ (531'FNL & 2140'FWL, SEC.22)): 0 feet	Depths are in feet
Coordinates are in feet referenced to Slot	Created by: robale01 on 11/Jul/2014



Actual Wellpath Report

DEEPE 36C-27HZ AWP

Page 1 of 6

REFERENCE WELLPATH IDENTIFICATION

Operator	KERR-MCGEE OIL & GAS ONSHORE LP	Slot	SLOT#02 DEEPE 36C-27HZ (531'FNL & 2140'FWL, SEC.22)
Area	COLORADO	Well	DEEPE 36C-27HZ
Field	WELD COUNTY (KERR MCGEE)	Wellbore	DEEPE 36C-27HZ AWB
Facility	SEC.22-T2N-R67W		

REPORT SETUP INFORMATION

Projection System	NAD83 / Lambert Colorado SP, Northern Zone (501), US feet	Software System	WellArchitect® 4.0.0
North Reference	True	User	Robiale01
Scale	0.999959	Report Generated	11/Jul/2014 at 15:08
Convergence at slot	n/a	Database/Source file	WellArchitectDB/DEEPE_36C-27HZ_AWB.xml

WELLPATH LOCATION

	Local coordinates		Grid coordinates		Geographic coordinates	
	North[ft]	East[ft]	Easting[US ft]	Northing[US ft]	Latitude	Longitude
Slot Location	-0.40	29.91	3173800.18	1290629.76	40°07'46.200"N	104°52'42.384"W
Facility Reference Pt			3173770.27	1290629.95	40°07'46.204"N	104°52'42.769"W
Field Reference Pt			3197771.84	1268891.29	40°04'09.600"N	104°47'36.000"W

WELLPATH DATUM

Calculation method	Minimum curvature	PRECISION 595 (25'KB) (RKB) to Facility Vertical Datum	5032.00ft
Horizontal Reference Pt	Slot	PRECISION 595 (25'KB) (RKB) to Mean Sea Level	5032.00ft
Vertical Reference Pt	PRECISION 595 (25'KB) (RKB)	PRECISION 595 (25'KB) (RKB) to Mud Line at Slot (SLOT#02 DEEPE 36C-27HZ (531'FNL & 2140'FWL, SEC.22))	5032.00ft
MD Reference Pt	PRECISION 595 (25'KB) (RKB)	Section Origin	N 0.00, E 0.00 ft
Field Vertical Reference	Mean Sea Level	Section Azimuth	179.50°

Actual Wellpath Report

DEEPE 36C-27HZ AWP

Page 2 of 6

REFERENCE WELLPATH IDENTIFICATION			
Operator	KERR-MCGEE OIL & GAS ONSHORE LP	Slot	SLOT#02 DEEPE 36C-27HZ (531'FNL & 2140'FWL, SEC.22)
Area	COLORADO	Well	DEEPE 36C-27HZ
Field	WELD COUNTY (KERR MCGEE)	Wellbore	DEEPE 36C-27HZ AWB
Facility	SEC.22-T2N-R67W		

WELLPATH DATA (120 stations) † = interpolated/extrapolated station										
MD [ft]	Inclination [°]	Azimuth [°]	TVD [ft]	Vert Sect [ft]	North [ft]	East [ft]	Latitude	Longitude	DLS [°/100ft]	Comments
0.00†	0.000	146.040	0.00	0.00	0.00	0.00	40°07'46.200"N	104°52'42.384"W	0.00	
25.00	0.000	146.040	25.00	0.00	0.00	0.00	40°07'46.200"N	104°52'42.384"W	0.00	TIE ON
125.00	0.820	146.040	125.00	0.60	-0.59	0.40	40°07'46.194"N	104°52'42.379"W	0.82	BEGIN GYRO SURVEYS
225.00	0.590	133.850	224.99	1.55	-1.54	1.17	40°07'46.185"N	104°52'42.369"W	0.27	
325.00	0.690	123.980	324.98	2.25	-2.24	2.04	40°07'46.178"N	104°52'42.358"W	0.15	
425.00	0.680	86.190	424.98	2.56	-2.53	3.13	40°07'46.175"N	104°52'42.344"W	0.44	
525.00	0.740	74.950	524.97	2.37	-2.33	4.35	40°07'46.177"N	104°52'42.328"W	0.15	
625.00	0.620	60.230	624.96	1.94	-1.89	5.44	40°07'46.181"N	104°52'42.314"W	0.21	
639.00	0.600	55.680	638.96	1.86	-1.81	5.57	40°07'46.182"N	104°52'42.312"W	0.37	TIE ONTO GYRO SURVEYS
810.00	0.170	83.210	809.96	1.33	-1.28	6.56	40°07'46.187"N	104°52'42.300"W	0.27	BEGIN BHI MWD+IFR SURVEYS
1094.00	0.760	300.620	1093.95	0.31	-0.27	5.36	40°07'46.197"N	104°52'42.315"W	0.32	
1188.00	1.880	45.520	1187.93	-1.08	1.13	5.92	40°07'46.211"N	104°52'42.308"W	2.34	
1283.00	4.130	80.160	1282.80	-2.72	2.81	10.40	40°07'46.228"N	104°52'42.250"W	2.94	
1378.00	5.910	81.550	1377.43	-3.95	4.11	18.61	40°07'46.241"N	104°52'42.144"W	1.88	
1473.00	7.830	80.780	1471.75	-5.60	5.87	29.84	40°07'46.258"N	104°52'42.000"W	2.02	
1568.00	9.020	95.740	1565.73	-5.77	6.16	43.64	40°07'46.261"N	104°52'41.822"W	2.61	
1662.00	10.680	96.750	1658.34	-3.87	4.40	59.62	40°07'46.243"N	104°52'41.616"W	1.78	
1757.00	9.670	93.620	1751.85	-2.19	2.86	76.33	40°07'46.228"N	104°52'41.401"W	1.21	
1852.00	8.340	90.460	1845.68	-1.50	2.30	91.18	40°07'46.223"N	104°52'41.210"W	1.49	
1946.00	7.420	88.500	1938.79	-1.49	2.40	104.06	40°07'46.224"N	104°52'41.044"W	1.02	
2041.00	6.830	86.770	2033.05	-1.87	2.88	115.84	40°07'46.228"N	104°52'40.893"W	0.66	
2136.00	6.340	80.810	2127.43	-2.93	4.04	126.65	40°07'46.240"N	104°52'40.753"W	0.88	
2231.00	5.370	78.220	2221.93	-4.59	5.78	136.18	40°07'46.257"N	104°52'40.631"W	1.06	
2325.00	5.390	73.430	2315.52	-6.67	7.94	144.72	40°07'46.278"N	104°52'40.521"W	0.48	
2420.00	4.650	72.790	2410.15	-9.01	10.35	152.68	40°07'46.302"N	104°52'40.418"W	0.78	
2515.00	3.970	66.880	2504.88	-11.38	12.78	159.38	40°07'46.326"N	104°52'40.332"W	0.85	
2609.00	3.370	79.550	2598.69	-13.11	14.56	165.09	40°07'46.344"N	104°52'40.259"W	1.07	
2704.00	1.150	118.350	2693.62	-13.13	14.62	168.68	40°07'46.344"N	104°52'40.212"W	2.71	
2799.00	1.310	198.650	2788.60	-11.65	13.13	169.17	40°07'46.330"N	104°52'40.206"W	1.67	
3166.00	1.530	205.620	3155.49	-3.29	4.74	165.71	40°07'46.247"N	104°52'40.251"W	0.08	
3525.00	0.510	350.590	3514.45	-0.56	2.00	163.37	40°07'46.220"N	104°52'40.281"W	0.55	
3929.00	1.060	313.150	3918.41	-4.92	6.33	160.35	40°07'46.263"N	104°52'40.320"W	0.18	
4333.00	1.550	258.930	4322.32	-6.50	7.83	152.26	40°07'46.277"N	104°52'40.424"W	0.31	
4738.00	0.490	343.200	4727.27	-7.15	8.44	146.39	40°07'46.283"N	104°52'40.499"W	0.39	
4917.00	0.980	130.640	4906.26	-6.88	8.17	147.33	40°07'46.281"N	104°52'40.487"W	0.79	
5322.00	1.010	71.670	5311.21	-5.69	7.04	153.34	40°07'46.270"N	104°52'40.410"W	0.24	
5726.00	0.700	48.140	5715.16	-8.42	9.81	158.56	40°07'46.297"N	104°52'40.343"W	0.11	
6130.00	0.650	11.490	6119.14	-12.29	13.70	160.86	40°07'46.335"N	104°52'40.313"W	0.11	
6534.00	0.440	147.960	6523.13	-13.21	14.63	162.14	40°07'46.345"N	104°52'40.297"W	0.25	
6971.00	1.450	266.520	6960.08	-11.49	12.87	157.51	40°07'46.327"N	104°52'40.356"W	0.39	
7028.00	1.910	274.050	7017.06	-11.53	12.90	155.84	40°07'46.327"N	104°52'40.378"W	0.89	
7072.00	4.530	193.720	7061.00	-9.90	11.26	154.70	40°07'46.311"N	104°52'40.392"W	10.48	
7117.00	8.600	181.230	7105.70	-4.81	6.17	154.20	40°07'46.261"N	104°52'40.399"W	9.53	
7162.00	11.600	174.240	7150.00	3.06	-1.70	154.58	40°07'46.183"N	104°52'40.394"W	7.19	
7207.00	14.040	177.900	7193.88	13.02	-11.66	155.24	40°07'46.085"N	104°52'40.385"W	5.71	

Actual Wellpath Report

DEEPE 36C-27HZ AWP

Page 3 of 6

REFERENCE WELLPATH IDENTIFICATION

Operator	KERR-MCGEE OIL & GAS ONSHORE LP	Slot	SLOT#02 DEEPE 36C-27HZ (531'FNL & 2140'FWL, SEC.22)
Area	COLORADO	Well	DEEPE 36C-27HZ
Field	WELD COUNTY (KERR MCGEE)	Wellbore	DEEPE 36C-27HZ AWB
Facility	SEC.22-T2N-R67W		

WELLPATH DATA (120 stations) † = interpolated/extrapolated station

MD [ft]	Inclination [°]	Azimuth [°]	TVD [ft]	Vert Sect [ft]	North [ft]	East [ft]	Latitude	Longitude	DLS [°/100ft]	Comments
7252.00	16.720	170.170	7237.26	24.87	-23.49	156.54	40°07'45.968"N	104°52'40.369"W	7.49	
7297.00	20.210	172.170	7279.94	38.97	-37.58	158.71	40°07'45.829"N	104°52'40.341"W	7.88	
7342.00	23.660	169.050	7321.68	55.56	-54.15	161.48	40°07'45.665"N	104°52'40.305"W	8.09	
7387.00	26.460	169.520	7362.44	74.32	-72.88	165.02	40°07'45.480"N	104°52'40.260"W	6.24	
7432.00	30.070	169.810	7402.07	95.32	-93.84	168.84	40°07'45.273"N	104°52'40.210"W	8.03	
7477.00	34.560	172.050	7440.09	119.10	-117.59	172.60	40°07'45.038"N	104°52'40.162"W	10.32	
7522.00	39.600	174.210	7475.98	146.05	-144.51	175.82	40°07'44.772"N	104°52'40.121"W	11.57	
7567.00	44.850	176.560	7509.29	176.20	-174.65	178.22	40°07'44.474"N	104°52'40.090"W	12.18	
7612.00	50.040	180.770	7539.72	209.32	-207.76	178.94	40°07'44.147"N	104°52'40.080"W	13.43	
7657.00	55.700	182.460	7566.88	245.16	-243.61	177.91	40°07'43.793"N	104°52'40.094"W	12.93	
7702.00	61.830	183.110	7590.20	283.55	-282.02	176.03	40°07'43.413"N	104°52'40.118"W	13.68	
7746.00	67.930	182.060	7608.87	323.32	-321.80	174.25	40°07'43.020"N	104°52'40.141"W	14.03	
7791.00	72.490	181.260	7624.10	365.62	-364.11	173.03	40°07'42.602"N	104°52'40.157"W	10.27	
7836.00	75.850	182.240	7636.38	408.87	-407.38	171.70	40°07'42.174"N	104°52'40.174"W	7.75	
7881.00	81.500	182.490	7645.21	452.92	-451.45	169.88	40°07'41.739"N	104°52'40.197"W	12.57	
7926.00	88.090	180.710	7649.29	497.68	-496.22	168.63	40°07'41.296"N	104°52'40.213"W	15.16	
7938.00	89.480	181.230	7649.55	509.67	-508.21	168.43	40°07'41.178"N	104°52'40.216"W	12.37	
7970.00†	90.530	181.327	7649.54	541.65	-540.20	167.72	40°07'40.862"N	104°52'40.225"W	3.30	7" CASING POINT
7984.00	90.990	181.370	7649.36	555.65	-554.20	167.39	40°07'40.723"N	104°52'40.229"W	3.30	
8074.00	92.000	181.880	7647.01	645.55	-644.13	164.83	40°07'39.835"N	104°52'40.262"W	1.26	
8164.00	91.950	181.970	7643.91	735.42	-734.03	161.81	40°07'38.946"N	104°52'40.301"W	0.11	
8254.00	90.430	181.540	7642.04	825.33	-823.96	159.06	40°07'38.058"N	104°52'40.336"W	1.76	
8344.00	90.370	181.370	7641.41	915.27	-913.93	156.77	40°07'37.168"N	104°52'40.366"W	0.20	
8523.00	89.970	180.160	7640.88	1094.22	-1092.91	154.38	40°07'35.400"N	104°52'40.397"W	0.71	
8703.00	89.040	178.970	7642.43	1274.21	-1272.89	155.75	40°07'33.621"N	104°52'40.379"W	0.84	
8882.00	91.450	180.180	7641.67	1453.19	-1451.87	157.08	40°07'31.852"N	104°52'40.362"W	1.51	
9062.00	88.580	178.470	7641.62	1633.17	-1631.83	159.20	40°07'30.074"N	104°52'40.335"W	1.86	
9242.00	89.790	180.080	7644.18	1813.14	-1811.79	161.47	40°07'28.296"N	104°52'40.305"W	1.12	
9421.00	90.000	179.830	7644.51	1992.13	-1990.79	161.61	40°07'26.527"N	104°52'40.304"W	0.18	
9601.00	89.910	182.410	7644.65	2172.04	-2170.74	158.10	40°07'24.749"N	104°52'40.349"W	1.43	
9781.00	90.120	182.440	7644.60	2351.81	-2350.58	150.48	40°07'22.971"N	104°52'40.447"W	0.12	
9960.00	89.600	181.800	7645.04	2530.62	-2529.45	143.86	40°07'21.204"N	104°52'40.532"W	0.46	
10140.00	89.850	181.890	7645.90	2710.47	-2709.36	138.06	40°07'19.426"N	104°52'40.607"W	0.15	
10320.00	90.430	182.760	7645.47	2890.24	-2889.21	130.76	40°07'17.649"N	104°52'40.701"W	0.58	
10499.00	90.000	180.940	7644.79	3069.08	-3068.10	124.98	40°07'15.881"N	104°52'40.775"W	1.04	
10679.00	89.780	180.780	7645.14	3249.03	-3248.08	122.28	40°07'14.102"N	104°52'40.810"W	0.15	
10858.00	89.600	180.510	7646.11	3427.99	-3427.07	120.27	40°07'12.333"N	104°52'40.836"W	0.18	
11038.00	90.590	180.390	7645.81	3607.97	-3607.06	118.85	40°07'10.555"N	104°52'40.854"W	0.55	
11217.00	89.450	180.800	7645.75	3786.93	-3786.05	116.99	40°07'08.786"N	104°52'40.878"W	0.68	
11397.00	90.150	180.270	7646.37	3966.90	-3966.04	115.31	40°07'07.007"N	104°52'40.900"W	0.49	
11576.00	89.140	179.310	7647.48	4145.89	-4145.03	115.97	40°07'05.238"N	104°52'40.891"W	0.78	
11756.00	90.150	179.830	7648.60	4325.88	-4325.02	117.32	40°07'03.460"N	104°52'40.874"W	0.63	
11936.00	90.000	180.060	7648.36	4505.87	-4505.02	117.49	40°07'01.681"N	104°52'40.872"W	0.15	
12115.00	90.490	180.640	7647.60	4684.85	-4684.01	116.40	40°06'59.912"N	104°52'40.886"W	0.42	
12295.00	90.000	180.910	7646.83	4864.80	-4863.99	113.96	40°06'58.134"N	104°52'40.917"W	0.31	

Actual Wellpath Report

DEEPE 36C-27HZ AWP

Page 4 of 6

REFERENCE WELLPATH IDENTIFICATION				
Operator	KERR-MCGEE OIL & GAS ONSHORE LP		Slot	SLOT#02 DEEPE 36C-27HZ (531'FNL & 2140'FWL, SEC.22)
Area	COLORADO		Well	DEEPE 36C-27HZ
Field	WELD COUNTY (KERR MCGEE)		Wellbore	DEEPE 36C-27HZ AWB
Facility	SEC.22-T2N-R67W			

WELLPATH DATA (120 stations)										
MD [ft]	Inclination [°]	Azimuth [°]	TVD [ft]	Vert Sect [ft]	North [ft]	East [ft]	Latitude	Longitude	DLS [°/100ft]	Comments
12475.00	89.200	180.930	7648.09	5044.74	-5043.96	111.07	40°06'56.355"N	104°52'40.954"W	0.44	
12654.00	89.850	180.710	7649.57	5223.69	-5222.94	108.51	40°06'54.586"N	104°52'40.987"W	0.38	
12833.00	90.830	180.440	7648.51	5402.65	-5401.92	106.72	40°06'52.818"N	104°52'41.010"W	0.57	
13013.00	89.540	179.760	7647.93	5582.63	-5581.92	106.40	40°06'51.039"N	104°52'41.014"W	0.81	
13193.00	90.430	179.340	7647.97	5762.63	-5761.91	107.82	40°06'49.260"N	104°52'40.996"W	0.55	
13372.00	90.740	180.320	7646.15	5941.62	-5940.90	108.35	40°06'47.491"N	104°52'40.989"W	0.57	
13552.00	90.090	180.170	7644.84	6121.60	-6120.89	107.58	40°06'45.713"N	104°52'40.999"W	0.37	
13732.00	89.970	179.040	7644.75	6301.59	-6300.88	108.82	40°06'43.934"N	104°52'40.983"W	0.63	
13911.00	90.220	178.760	7644.45	6480.58	-6479.85	112.26	40°06'42.165"N	104°52'40.939"W	0.21	
14091.00	90.770	178.030	7642.90	6660.54	-6659.77	117.30	40°06'40.387"N	104°52'40.874"W	0.51	
14271.00	89.970	180.540	7641.73	6840.52	-6839.73	119.54	40°06'38.609"N	104°52'40.845"W	1.46	
14450.00	88.580	180.360	7644.00	7019.48	-7018.71	118.14	40°06'36.840"N	104°52'40.864"W	0.78	
14630.00	88.400	179.870	7648.74	7199.40	-7198.65	117.78	40°06'35.062"N	104°52'40.868"W	0.29	
14809.00	89.200	180.560	7652.49	7378.35	-7377.60	117.10	40°06'33.294"N	104°52'40.877"W	0.59	
14989.00	90.400	180.330	7653.12	7558.32	-7557.59	115.71	40°06'31.515"N	104°52'40.895"W	0.68	
15169.00	89.290	178.980	7653.60	7738.31	-7737.58	116.79	40°06'29.736"N	104°52'40.881"W	0.97	
15348.00	91.050	182.560	7653.07	7917.23	-7916.53	114.38	40°06'27.968"N	104°52'40.912"W	2.23	
15528.00	89.820	183.390	7651.71	8096.89	-8096.28	105.04	40°06'26.192"N	104°52'41.032"W	0.82	
15707.00	90.590	184.200	7651.07	8275.38	-8274.88	93.20	40°06'24.427"N	104°52'41.185"W	0.62	
15887.00	88.390	183.250	7652.67	8454.87	-8454.48	81.50	40°06'22.652"N	104°52'41.335"W	1.33	
16066.00	87.900	180.660	7658.46	8633.60	-8633.27	75.40	40°06'20.885"N	104°52'41.414"W	1.47	
16155.00	89.080	179.290	7660.81	8722.56	-8722.23	75.44	40°06'20.006"N	104°52'41.413"W	2.03	
16335.00	89.350	179.900	7663.28	8902.54	-8902.21	76.71	40°06'18.227"N	104°52'41.397"W	0.37	
16515.00	91.200	180.530	7662.41	9082.51	-9082.20	76.04	40°06'16.449"N	104°52'41.405"W	1.09	
16694.00	90.990	179.860	7658.99	9261.47	-9261.16	75.43	40°06'14.680"N	104°52'41.413"W	0.39	
16874.00	90.960	180.110	7655.93	9441.43	-9441.14	75.47	40°06'12.902"N	104°52'41.413"W	0.14	
17054.00	89.480	179.030	7655.24	9621.43	-9621.12	76.82	40°06'11.123"N	104°52'41.395"W	1.02	
17233.00	88.450	178.020	7658.47	9800.37	-9800.03	81.43	40°06'09.355"N	104°52'41.336"W	0.81	
17384.00	88.430	178.290	7662.58	9951.27	-9950.89	86.29	40°06'07.864"N	104°52'41.274"W	0.18	LAST BHI MWD+IFR SURVEY
17436.00	88.430	178.290	7664.01	10003.24	-10002.85	87.84	40°06'07.351"N	104°52'41.254"W	0.00	PROJECTION TO BIT

HOLE & CASING SECTIONS - Ref Wellbore: DEEPE 36C-27HZ AWB Ref Wellpath: DEEPE 36C-27HZ AWP									
String/Diameter	Start MD [ft]	End MD [ft]	Interval [ft]	Start TVD [ft]	End TVD [ft]	Start N/S [ft]	Start E/W [ft]	End N/S [ft]	End E/W [ft]
13.5in Open Hole	25.00	719.00	694.00	25.00	718.96	0.00	0.00	-1.44	6.15
9.625in Casing Surface	25.00	709.00	684.00	25.00	708.96	0.00	0.00	-1.48	6.09
8.75in Open Hole	719.00	7980.00	7261.00	718.96	7649.42	-1.44	6.15	-550.20	167.48
7in Casing Intermediate	25.00	7970.00	7945.00	25.00	7649.54	0.00	0.00	-540.20	167.72
6.125in Open Hole	7980.00	17436.00	9456.00	7649.42	7664.01	-550.20	167.48	-10002.85	87.84

Actual Wellpath Report

DEEPE 36C-27HZ AWP

Page 5 of 6

REFERENCE WELLPATH IDENTIFICATION

Operator	KERR-MCGEE OIL & GAS ONSHORE LP	Slot	SLOT#02 DEEPE 36C-27HZ (531'FNL & 2140'FWL, SEC.22)
Area	COLORADO	Well	DEEPE 36C-27HZ
Field	WELD COUNTY (KERR MCGEE)	Wellbore	DEEPE 36C-27HZ AWB
Facility	SEC.22-T2N-R67W		

WELLPATH COMPOSITION - Ref Wellbore: DEEPE 36C-27HZ AWB Ref Wellpath: DEEPE 36C-27HZ AWP

Start MD [ft]	End MD [ft]	Positional Uncertainty Model	Log Name/Comment	Wellbore
25.00	639.00	Generic gyro - continuous (Standard)	MS GYRO SURVEYS <125-639>	DEEPE 36C-27HZ AWB
639.00	7938.00	NaviTrak (MAGCORR,IFR)	BHI NAVITRAK MWD+IFR 8 3/4" <810-7938>	DEEPE 36C-27HZ AWB
7938.00	17384.00	NaviTrak (MAGCORR,IFR)	BHI NAVITRAK MWD+IFR 6 1/8" <7984-17384>	DEEPE 36C-27HZ AWB
17384.00	17436.00	Blind Drilling (std)	Projection to bit	DEEPE 36C-27HZ AWB

Actual Wellpath Report

DEEPE 36C-27HZ AWP

Page 6 of 6

REFERENCE WELLPATH IDENTIFICATION

Operator	KERR-MCGEE OIL & GAS ONSHORE LP	Slot	SLOT#02 DEEPE 36C-27HZ (531'FNL & 2140'FWL, SEC.22)
Area	COLORADO	Well	DEEPE 36C-27HZ
Field	WELD COUNTY (KERR MCGEE)	Wellbore	DEEPE 36C-27HZ AWB
Facility	SEC.22-T2N-R67W		

WELLPATH COMMENTS

MD [ft]	Inclination [°]	Azimuth [°]	TVD [ft]	Comment
25.00	0.000	146.040	25.00	TIE ON
125.00	0.820	146.040	125.00	BEGIN GYRO SURVEYS
639.00	0.600	55.680	638.96	TIE ONTO GYRO SURVEYS
810.00	0.170	83.210	809.96	BEGIN BHI MWD+IFR SURVEYS
7970.00	90.530	181.327	7649.54	7" CASING POINT
17384.00	88.430	178.290	7662.58	LAST BHI MWD+IFR SURVEY
17436.00	88.430	178.290	7664.01	PROJECTION TO BIT