

HALLIBURTON

iCem[®] Service

ANADARKO PETROLEUM CORP - EBUS

For: RANDY CASE

Date: Wednesday, July 16, 2014

Berry Farms 30N-8HZ Surface

Berry Farms 30N-8HZ
BERRY FARMS 30N-8HZ

Sincerely,

Derek Trier

Table of Contents

1.1	Executive Summary	3
1.2	Cementing Job Summary	4
1.3	Job Overview	6
1.4	Job Event Log	7
2.0	Custom Graphs	9
2.1	Custom Graph	9
3.0	Appendix	10

1.1 Executive Summary

Halliburton appreciates the opportunity to perform the cementing services on the **Berry Farms 30N-8HZ** cement **Surface** casing job. A pre-job safety meeting was held before the job where details of the job were discussed, potential safety hazards were reviewed, and environmental compliance procedures were outlined.

Halliburton maintains a continuous quality improvement process and appreciates any comments or suggestions that you may have. Halliburton again thanks you for the opportunity to perform service work on this well. We hope to be your solutions provider for future projects.

Respectfully,

Halliburton [Brighton]

Job Times

	Date	Time	Time Zone
Called Out	04/07	0330	MST
On Location		0700	
Job Started		0901	
Job Completed		1015	
Departed Location		1100	

1.2 Cementing Job Summary

HALLIBURTON

Cementing Job Summary

The Road to Excellence Starts with Safety

Sold To #: 300466	Ship To #: 3337562	Quote #:	Sales Order #: 0901250366
Customer: ANADARKO PETROLEUM CORP - EBUS		Customer Rep: RANDY CASE	
Well Name: BERRY FARMS	Well #: 30N-8 HZ	API/UWI #: 05-123-38911-00	
Field: WATTENBERG	City (SAP): PLA	County/Parish: WELD	State: COLORADO
Legal Description: NE NE-8-3N-67W-1307FNL-300FEL			
Contractor: Randy Case		Rig/Platform Name/Num: Majors 29	
Job BOM: 7521			
Well Type: HORIZONTAL GAS			
Sales Person: HALAMERICA/HX46524		Srv Supervisor: Christopher Pickell	
Job			
Formation Name			
Formation Depth (MD)	Top	Bottom	
Form Type	BHST		
Job depth MD	820ft	Job Depth TVD	
Water Depth		Wk Ht Above Floor	4 FT
Perforation Depth (MD)	From	To	
Well Data			
Description	New / Used	Size in	ID in
Casing		9.625	8.921
Open Hole Section			13.5
Tools and Accessories			
Type	Size in	Qty	Make
Guide Shoe	9.625	1	810.09
Float Shoe	9.625		
Float Collar	9.625	1	767.76
Insert Float	9.625		
Stage Tool	9.625		
Miscellaneous Materials			
Gelling Agt	Conc	Surfactant	Conc
Treatment Fld	Conc	Inhibitor	Conc
Fluid Data			
Stage/Plug #: 1			
Fluid #	Stage Type	Fluid Name	Qty
1	Mud Flush III (Powder)	Mud Flush III	12
42 gal/bbl		FRESH WATER	
Fluid #	Stage Type	Fluid Name	Qty

last updated on 4/7/2014 5:06:05 PM

Page 1 of 3

HALLIBURTON

Cementing Job Summary

2	Lead Cement	SWIFTCEM (TM) SYSTEM	335	sack	14.2	1.54		6	7.64
		VERSASET, 55 LB SK (101376573)							
		POLY-E-FLAKE (101216940)							
		ENHANCER 923, BULK (101894003)							
		ECONOLITE (100001580)							
		CAL-SEAL 60, 50 LB BAG (101217146)							
		FRESH WATER							
Fluid #	Stage Type	Fluid Name	Qty	Qty UoM	Mixing Density lbm/gal	Yield ft3/sack	Mix Fluid Gal	Rate bbl/min	Total Mix Fluid Gal
3	Displacement	Displacement	59.5	bbl	8.33				
Cement Left In Pipe		Amount	42.33 ft		Reason		Shoe Joint		
Comment									

1.3 Job Overview

		Units	Description
1	Surface temperature at time of job	°F	
2	Mud type (OBM, WBM, SBM, Water, Brine)	-	WBM
3	Actual mud density	lb/gal	
4	Time circulated before job	HH:MM	
5	Mud volume circulated	Bbls	
6	Rate at which well was circulated	Bpm	
7	Pipe movement during hole circulation	Y/N	N
8	Rig pressure while circulating	Psi	
9	Time from end mud circulation to start of job	HH:MM	
10	Pipe movement during cementing	Y/N	N
11	Calculated displacement	Bbls	59.5
12	Job displaced by	Rig/HES	HES
13	Annular before job)?	Y/N	N
14	Annular flow after job	Y/N	N
15	Length of rat hole	Ft	
16	Units of gas detected while circulating	Units	
17	Was lost circulation experienced at any time ?	Y/N	N

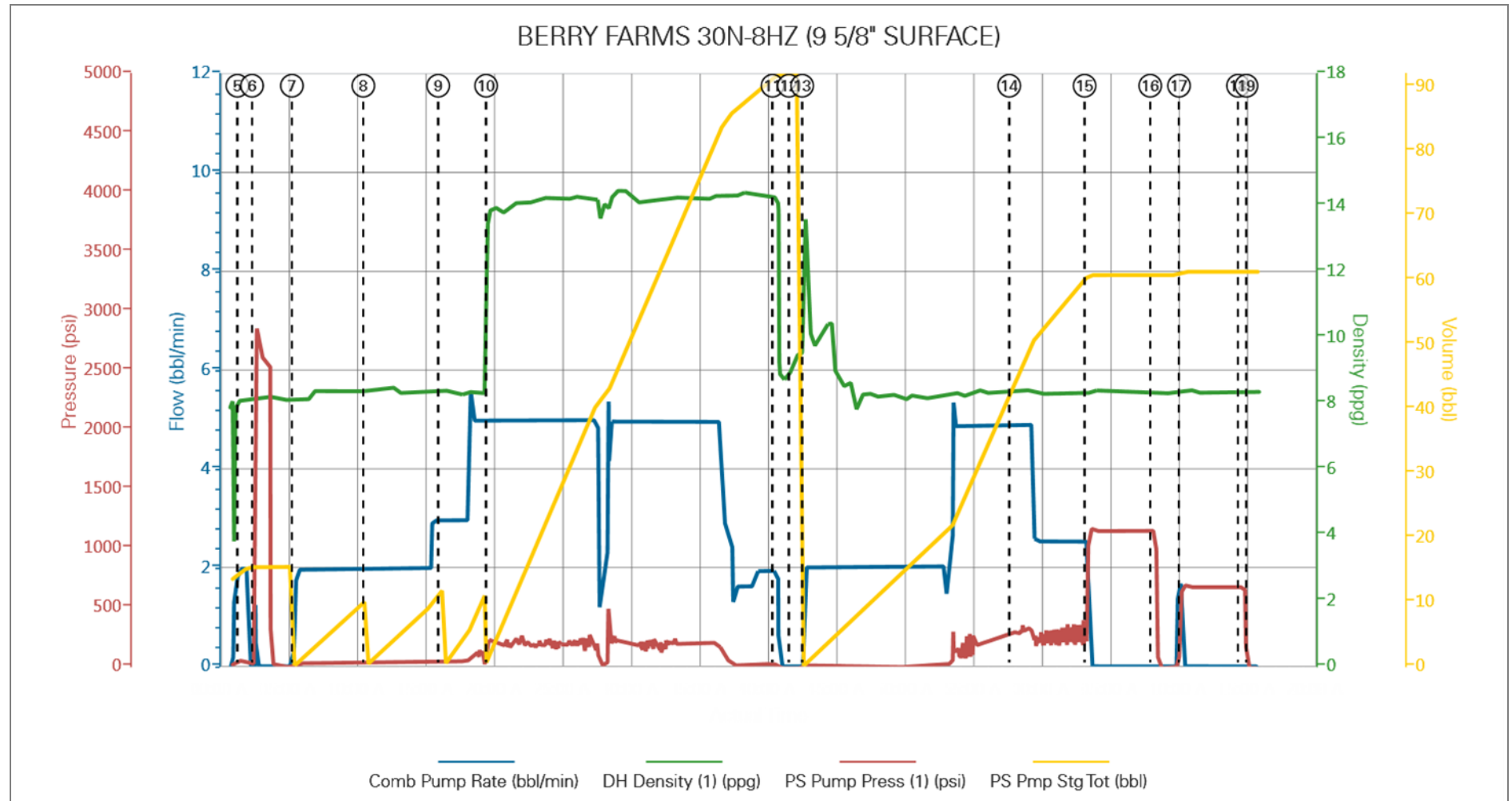
1.4 Job Event Log

Type	Seq. No.	Activity	Graph Label	Date	Time	Source	Combined Pump Rate (bbl/min)	Downhole Density (ppg)	Pass-Side Pump Pressure (psi)	PS Pmp Stg Tot (bbl)	Comment
Event	1	Call Out	Call Out	4/7/2014	03:30:00	USER					Crew called out at 0330 to be on location at 0730. Crew was Christopher Pickell, Roy Nesbitt, Keaton Simmons
Event	2	Safety Meeting	Safety Meeting	4/7/2014	06:30:00	USER					Safety meeting held for journey. Left the Yard for Major 29
Event	3	Arrive At Loc	Arrive At Loc	4/7/2014	07:00:00	USER					Arrive at location 30 minutes early. Rig crew had 5 joints of casing left to run.
Event	4	Safety Meeting	Safety Meeting	4/7/2014	07:45:00	USER					Pre job safety meeting with rig crew to discuss job safety and procedure.
Event	5	Start Job	Start Job	4/7/2014	08:01:30	USER	1.98	8.10	49.75	14.5	Quick latch plug container used on job.
Event	6	Pressure Test	Pressure Test	4/7/2014	08:02:34	USER	0.11	8.13	2810.73	15.4	Pressure test lines to 2500 psi. Check for visible leaks and pressure loss.
Event	7	Pump Spacer	Pump Water	4/7/2014	08:05:28	USER	1.70	8.10	23.37	0.2	Pump 10 bbl water
Event	8	Pump Spacer	Pump Mudflush	4/7/2014	08:10:41	USER	1.97	8.39	30.87	0.3	Pump 12 bbl mudflush
Event	9	Pump Spacer	Pump Water	4/7/2014	08:16:10	USER	2.96	8.40	49.62	11.8	Pump 10 bbl water
Event	10	Pump Cement	Pump Swiftcem 14.2#	4/7/2014	08:19:39	USER	4.99	13.75	224.00	2.0	Pump Swiftcem cement 335 sks 14.2 ppg 1.54 cuft/sk 7.76 gal/sk 91.9 bbl
Event	11	Shutdown	Shutdown	4/7/2014	08:40:34	USER	1.93	14.22	19.62	91.7	Wash pumps and lines on top of plug
Event	12	Drop Top Plug	Drop Top Plug	4/7/2014	08:41:46	USER	0.00	9.14	-15.07	92.0	Plug preloaded. Witnessed by company man
Event	13	Pump Displacement	Pump Displacement	4/7/2014	08:42:44	USER	1.88	13.59	20.56	0.3	Pump 59.5 bbl water displacement
Event	14	Cement Returns to Surface	Cement Returns to Surface	4/7/2014	08:57:52	USER	4.90	8.34	265.25	43.4	Cement returns to surface with 45.5 bbl displacement away
Event	15	Bump Plug	Bump Plug	4/7/2014	09:03:22	USER	1.51	8.31	1038.70	60.7	Calculated pressure to land was 234 psi. Plug landed with 306 psi going 500 psi over.
Event	16	Check Floats	Check Floats	4/7/2014	09:08:09	USER	0.00	8.36	1144.64	60.7	Pressure was held for 4 minutes then released. Floats held. 1/2 bbl back to tanks
Event	17	Bump Plug	Bump Plug	4/7/2014	09:10:16	USER	0.00	8.32	673.07	61.3	Re-bump plug at Anadarko's request. Pressure brought up to 660 psi.

Event	18	Check Floats	Check Floats	4/7/2014	09:14:34	USER	0.00	8.35	669.32	61.3	Pressure held for 4 minutes then released. Floats held. 1/2 bbl back to tanks.
Event	19	End Job	End Job	4/7/2014	09:15:11	USER	0.00	8.30	-16.01	61.3	All spacers and 14 bbl of cement to surface.
Event	20	Safety Meeting	Safety Meeting	4/7/2014	10:18:00	USER					Safety meeting held with HES for rig down
Event	21	Rig Down Lines	Rig Down Lines	4/7/2014	10:20:00	USER					Wash up pump truck. Blow down lines. Rig down all equipment.
Event	22	Depart Location for Service Center or Other Site	Depart Location for Service Center	4/7/2014	11:00:00	USER					Safety meeting held for journey. Left Major 29 for the yard.

2.0 Custom Graphs

2.1 Custom Graph



3.0 Appendix
