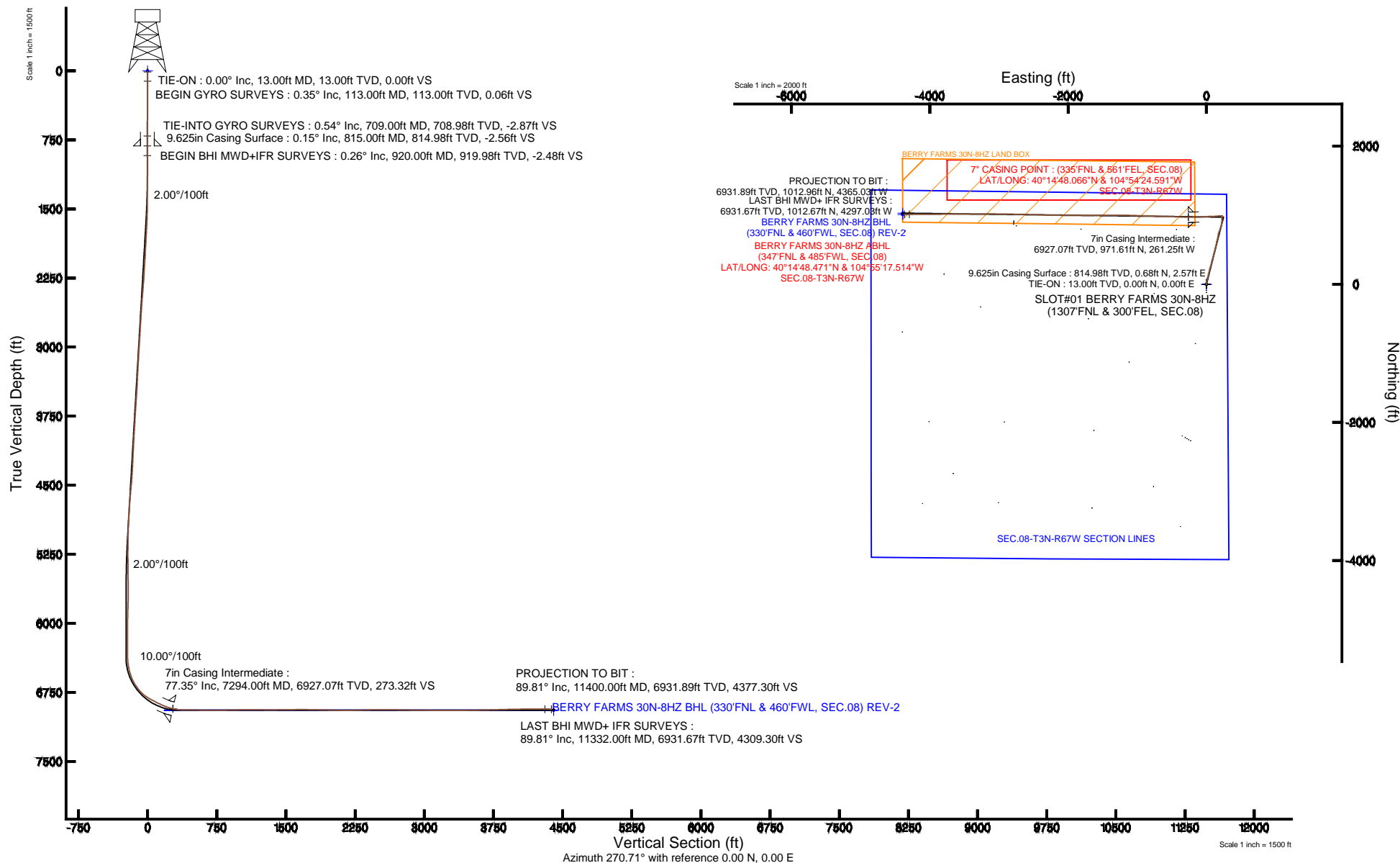


# KERR-MCGEE OIL & GAS ONSHORE LP

Location: COLORADO Slot: SLOT#01 BERRY FARMS 30N-8HZ (1307FNL & 300FEL, SEC.08)  
 Field: WELD COUNTY (KERR MCGEE) Well: BERRY FARMS 30N-8HZ  
 Facility: SEC.08-T3N-R67W Wellbore: BERRY FARMS 30N-8HZ PWB

Plot reference wellpath is BERRY FARMS 30N-8HZ (REV-A.0) PWP

True vertical depths are referenced to ENSIGN 145 (13KB) (RKB)	Grid System: NAD83 / Lambert Colorado SP, Northern Zone (501), US feet
Measured depths are referenced to ENSIGN 145 (13KB) (RKB)	North Reference: True north
ENSIGN 145 (13KB) (RKB) to Mean Sea Level: 4833 feet	Scale: True distance
Mean Sea Level to Mud line (At Slot: SLOT#01 BERRY FARMS 30N-8HZ (1307FNL & 300FEL, SEC.08)): 0 feet	Depths are in feet
Coordinates are in feet referenced to Slot	Created by: ingmjmr on 7/8/2014



# Actual Wellpath Report

BERRY FARMS 30N-8HZ AWP

Page 1 of 8

## REFERENCE WELLPATH IDENTIFICATION

Operator	KERR-MCGEE OIL & GAS ONSHORE LP	Slot	SLOT#01 BERRY FARMS 30N-8HZ (1307'FNL & 300'FEL, SEC.08)
Area	COLORADO	Well	BERRY FARMS 30N-8HZ
Field	WELD COUNTY (KERR MCGEE)	Wellbore	BERRY FARMS 30N-8HZ AWB
Facility	SEC.08-T3N-R67W		

## REPORT SETUP INFORMATION

Projection System	NAD83 / Lambert Colorado SP, Northern Zone (501), US feet	Software System	WellArchitect® 4.0.0
North Reference	True	User	Ingmjmr
Scale	0.999957	Report Generated	7/8/2014 at 2:42:48 PM
Convergence at slot	n/a	Database/Source file	Anadarko Local/BERRY_FARMS_30N-8HZ_AWB.xml

## WELLPATH LOCATION

	Local coordinates		Grid coordinates		Geographic coordinates	
	North[ft]	East[ft]	Easting[US ft]	Northing[US ft]	Latitude	Longitude
Slot Location	-0.00	0.08	3165843.86	1332293.12	40°14'38.465"N	104°54'21.222"W
Facility Reference Pt			3165843.78	1332293.12	40°14'38.465"N	104°54'21.223"W
Field Reference Pt			3197771.84	1268891.29	40°04'09.600"N	104°47'36.000"W

## WELLPATH DATUM

Calculation method	Minimum curvature	ENSIGN 145 (13'KB) (RKB) to Facility Vertical Datum	4833.00ft
Horizontal Reference Pt	Slot	ENSIGN 145 (13'KB) (RKB) to Mean Sea Level	4833.00ft
Vertical Reference Pt	ENSIGN 145 (13'KB) (RKB)	ENSIGN 145 (13'KB) (RKB) to Mud Line at Slot (SLOT#01 BERRY FARMS 30N-8HZ (1307'FNL & 300'FEL, SEC.08))	4833.00ft
MD Reference Pt	ENSIGN 145 (13'KB) (RKB)	Section Origin	N 0.00, E 0.00 ft
Field Vertical Reference	Mean Sea Level	Section Azimuth	270.71°

# Actual Wellpath Report

BERRY FARMS 30N-8HZ AWP

Page 2 of 8

## REFERENCE WELLPATH IDENTIFICATION

Operator	KERR-MCGEE OIL & GAS ONSHORE LP	Slot	SLOT#01 BERRY FARMS 30N-8HZ (1307'FNL & 300'FEL, SEC.08)
Area	COLORADO	Well	BERRY FARMS 30N-8HZ
Field	WELD COUNTY (KERR MCGEE)	Wellbore	BERRY FARMS 30N-8HZ AWP
Facility	SEC.08-T3N-R67W		

## WELLPATH DATA (137 stations) † = interpolated/extrapolated station

MD [ft]	Inclination [°]	Azimuth [°]	TVD [ft]	Vert Sect [ft]	North [ft]	East [ft]	Latitude	Longitude	DLS [°/100ft]	Comments
0.00†	0.000	349.730	0.00	0.00	0.00	0.00	40°14'38.465"N	104°54'21.222"W	0.00	
13.00	0.000	349.730	13.00	0.00	0.00	0.00	40°14'38.465"N	104°54'21.222"W	0.00	TIE-ON
113.00	0.350	349.730	113.00	0.06	0.30	-0.05	40°14'38.468"N	104°54'21.223"W	0.35	BEGIN GYRO SURVEYS
213.00	0.670	94.690	213.00	-0.47	0.55	0.47	40°14'38.470"N	104°54'21.216"W	0.83	
313.00	0.270	254.210	312.99	-0.82	0.44	0.83	40°14'38.469"N	104°54'21.211"W	0.93	
413.00	0.440	130.150	412.99	-0.89	0.13	0.90	40°14'38.466"N	104°54'21.210"W	0.63	
513.00	0.630	70.520	512.99	-1.71	0.07	1.71	40°14'38.466"N	104°54'21.200"W	0.56	
613.00	0.580	122.340	612.99	-2.65	-0.02	2.65	40°14'38.465"N	104°54'21.188"W	0.53	
709.00	0.540	334.870	708.98	-2.87	0.13	2.87	40°14'38.466"N	104°54'21.185"W	1.12	TIE-INTO GYRO SURVEYS
920.00	0.260	175.020	919.98	-2.48	0.55	2.49	40°14'38.470"N	104°54'21.190"W	0.37	BEGIN BHI MWD+IFR SURVEYS
1014.00	0.770	17.180	1013.98	-2.69	0.94	2.70	40°14'38.474"N	104°54'21.187"W	1.08	
1107.00	2.900	0.860	1106.93	-2.87	3.89	2.92	40°14'38.503"N	104°54'21.184"W	2.34	
1201.00	5.090	0.610	1200.69	-2.87	10.44	3.00	40°14'38.568"N	104°54'21.183"W	2.33	
1295.00	5.690	356.030	1294.28	-2.48	19.26	2.72	40°14'38.655"N	104°54'21.187"W	0.78	
1388.00	6.400	359.180	1386.76	-1.96	29.04	2.33	40°14'38.752"N	104°54'21.192"W	0.84	
1482.00	7.290	10.620	1480.09	-2.85	40.14	3.35	40°14'38.862"N	104°54'21.179"W	1.73	
1575.00	8.590	14.490	1572.20	-5.52	52.67	6.18	40°14'38.985"N	104°54'21.142"W	1.51	
1668.00	9.860	14.420	1663.99	-9.06	67.10	9.90	40°14'39.128"N	104°54'21.094"W	1.37	
1762.00	12.040	14.970	1756.28	-13.38	84.37	14.43	40°14'39.299"N	104°54'21.036"W	2.32	
1855.00	13.070	13.160	1847.05	-18.04	103.98	19.33	40°14'39.493"N	104°54'20.973"W	1.19	
1949.00	13.570	15.290	1938.52	-23.10	124.97	24.66	40°14'39.700"N	104°54'20.904"W	0.75	
2042.00	14.970	13.610	2028.65	-28.53	147.17	30.36	40°14'39.919"N	104°54'20.830"W	1.57	
2135.00	15.210	12.530	2118.45	-33.71	170.75	35.84	40°14'40.152"N	104°54'20.760"W	0.40	
2229.00	15.050	13.980	2209.19	-39.04	194.63	41.46	40°14'40.388"N	104°54'20.687"W	0.44	
2323.00	15.810	14.440	2299.80	-44.88	218.87	47.60	40°14'40.628"N	104°54'20.608"W	0.82	
2416.00	15.260	19.670	2389.41	-51.86	242.67	54.88	40°14'40.863"N	104°54'20.514"W	1.62	
2510.00	15.520	17.060	2480.04	-59.42	266.34	62.74	40°14'41.097"N	104°54'20.413"W	0.79	
2601.00	15.350	14.550	2567.76	-65.72	289.64	69.33	40°14'41.327"N	104°54'20.328"W	0.76	
2691.00	14.790	12.100	2654.66	-70.84	312.40	74.73	40°14'41.552"N	104°54'20.258"W	0.94	
2781.00	14.160	16.920	2741.81	-76.18	334.17	80.35	40°14'41.767"N	104°54'20.186"W	1.51	

# Actual Wellpath Report

BERRY FARMS 30N-8HZ AWP

Page 3 of 8

## REFERENCE WELLPATH IDENTIFICATION

Operator	KERR-MCGEE OIL & GAS ONSHORE LP	Slot	SLOT#01 BERRY FARMS 30N-8HZ (1307'FNL & 300'FEL, SEC.08)
Area	COLORADO	Well	BERRY FARMS 30N-8HZ
Field	WELD COUNTY (KERR MCGEE)	Wellbore	BERRY FARMS 30N-8HZ AWP
Facility	SEC.08-T3N-R67W		

## WELLPATH DATA (137 stations)

MD [ft]	Inclination [°]	Azimuth [°]	TVD [ft]	Vert Sect [ft]	North [ft]	East [ft]	Latitude	Longitude	DLS [°/100ft]	Comments
2871.00	13.600	14.120	2829.18	-81.71	354.96	86.13	40°14'41.973"N	104°54'20.111"W	0.97	
2961.00	14.500	14.480	2916.49	-86.84	376.13	91.53	40°14'42.182"N	104°54'20.042"W	1.00	
3051.00	13.970	16.200	3003.72	-92.42	397.47	97.38	40°14'42.393"N	104°54'19.966"W	0.75	
3141.00	12.770	13.310	3091.28	-97.50	417.59	102.70	40°14'42.592"N	104°54'19.898"W	1.53	
3231.00	13.910	14.090	3178.85	-102.17	437.76	107.62	40°14'42.791"N	104°54'19.834"W	1.28	
3321.00	13.520	14.200	3266.29	-107.12	458.45	112.84	40°14'42.995"N	104°54'19.767"W	0.43	
3411.00	12.040	11.780	3354.06	-111.38	477.84	117.33	40°14'43.187"N	104°54'19.709"W	1.75	
3501.00	13.790	13.850	3441.78	-115.62	497.44	121.82	40°14'43.381"N	104°54'19.651"W	2.01	
3591.00	13.430	15.520	3529.25	-120.73	517.93	127.18	40°14'43.583"N	104°54'19.582"W	0.59	
3681.00	15.480	15.910	3616.40	-126.55	539.55	133.27	40°14'43.797"N	104°54'19.503"W	2.28	
3771.00	16.580	12.770	3702.90	-132.38	563.63	139.40	40°14'44.035"N	104°54'19.424"W	1.56	
3861.00	16.450	10.180	3789.18	-137.16	588.69	144.49	40°14'44.282"N	104°54'19.359"W	0.83	
3951.00	15.240	15.390	3875.77	-142.25	612.64	149.89	40°14'44.519"N	104°54'19.289"W	2.07	
4041.00	13.720	13.000	3962.91	-147.52	634.45	155.43	40°14'44.735"N	104°54'19.218"W	1.81	
4131.00	15.040	12.300	4050.09	-152.14	656.26	160.32	40°14'44.950"N	104°54'19.155"W	1.48	
4221.00	13.540	10.430	4137.30	-156.26	678.03	164.71	40°14'45.165"N	104°54'19.098"W	1.74	
4311.00	15.250	12.000	4224.47	-160.36	699.97	169.08	40°14'45.382"N	104°54'19.042"W	1.95	
4401.00	15.030	9.520	4311.35	-164.46	723.06	173.47	40°14'45.610"N	104°54'18.985"W	0.76	
4491.00	14.330	16.580	4398.42	-169.29	745.24	178.58	40°14'45.829"N	104°54'18.919"W	2.13	
4581.00	14.920	22.270	4485.50	-176.59	766.64	186.15	40°14'46.041"N	104°54'18.821"W	1.72	
4671.00	14.290	20.990	4572.60	-184.70	787.73	194.52	40°14'46.249"N	104°54'18.713"W	0.79	
4761.00	14.340	19.610	4659.80	-192.16	808.60	202.24	40°14'46.456"N	104°54'18.614"W	0.38	
4851.00	13.140	18.330	4747.22	-198.87	828.81	209.20	40°14'46.655"N	104°54'18.524"W	1.38	
4941.00	11.790	15.740	4835.10	-204.35	847.38	214.91	40°14'46.839"N	104°54'18.451"W	1.62	
5031.00	12.700	9.980	4923.06	-208.32	865.97	219.12	40°14'47.022"N	104°54'18.396"W	1.69	
5121.00	11.800	7.350	5011.01	-210.98	884.84	222.01	40°14'47.209"N	104°54'18.359"W	1.18	
5211.00	10.530	6.430	5099.30	-212.86	902.14	224.11	40°14'47.380"N	104°54'18.332"W	1.42	
5301.00	9.300	3.040	5187.96	-213.98	917.57	225.41	40°14'47.532"N	104°54'18.315"W	1.51	
5391.00	8.190	359.500	5276.91	-214.14	931.25	225.74	40°14'47.667"N	104°54'18.311"W	1.37	
5481.00	7.000	356.090	5366.12	-213.56	943.13	225.31	40°14'47.785"N	104°54'18.316"W	1.41	

# Actual Wellpath Report

BERRY FARMS 30N-8HZ AWP

Page 4 of 8

## REFERENCE WELLPATH IDENTIFICATION

Operator	KERR-MCGEE OIL & GAS ONSHORE LP	Slot	SLOT#01 BERRY FARMS 30N-8HZ (1307'FNL & 300'FEL, SEC.08)
Area	COLORADO	Well	BERRY FARMS 30N-8HZ
Field	WELD COUNTY (KERR MCGEE)	Wellbore	BERRY FARMS 30N-8HZ AWP
Facility	SEC.08-T3N-R67W		

## WELLPATH DATA (137 stations) † = interpolated/extrapolated station

MD [ft]	Inclination [°]	Azimuth [°]	TVD [ft]	Vert Sect [ft]	North [ft]	East [ft]	Latitude	Longitude	DLS [°/100ft]	Comments
5571.00	6.100	353.580	5455.53	-212.52	953.35	224.40	40°14'47.886"N	104°54'18.328"W	1.05	
5661.00	5.290	352.930	5545.09	-211.37	962.22	223.36	40°14'47.974"N	104°54'18.342"W	0.90	
5751.00	4.310	0.540	5634.77	-210.80	969.72	222.88	40°14'48.048"N	104°54'18.348"W	1.30	
5841.00	2.520	12.570	5724.61	-211.19	975.04	223.34	40°14'48.100"N	104°54'18.342"W	2.13	
5931.00	2.880	44.130	5814.51	-213.15	978.59	225.35	40°14'48.135"N	104°54'18.316"W	1.68	
6021.00	2.360	38.820	5904.42	-215.85	981.66	228.08	40°14'48.166"N	104°54'18.281"W	0.64	
6111.00	1.110	21.640	5994.38	-217.31	983.91	229.57	40°14'48.188"N	104°54'18.261"W	1.49	
6201.00	1.110	28.480	6084.36	-218.02	985.49	230.30	40°14'48.203"N	104°54'18.252"W	0.15	
6291.00	0.800	12.400	6174.35	-218.56	986.87	230.86	40°14'48.217"N	104°54'18.245"W	0.45	
6424.00	0.970	349.400	6307.33	-218.52	988.88	230.85	40°14'48.237"N	104°54'18.245"W	0.29	
6516.00	3.620	269.420	6399.26	-215.47	989.62	227.80	40°14'48.244"N	104°54'18.284"W	3.89	
6561.00	7.200	276.060	6444.06	-211.24	989.90	223.57	40°14'48.247"N	104°54'18.339"W	8.06	
6606.00	12.130	272.820	6488.40	-203.70	990.43	216.04	40°14'48.252"N	104°54'18.436"W	11.02	
6651.00	15.570	269.910	6532.09	-192.93	990.65	205.28	40°14'48.255"N	104°54'18.575"W	7.80	
6696.00	20.210	266.870	6574.90	-179.13	990.22	191.47	40°14'48.250"N	104°54'18.753"W	10.51	
6741.00	25.240	265.320	6616.40	-161.81	989.01	174.13	40°14'48.238"N	104°54'18.976"W	11.26	
6786.00	30.380	264.570	6656.19	-140.93	987.15	153.23	40°14'48.220"N	104°54'19.246"W	11.45	
6831.00	35.690	265.190	6693.90	-116.54	984.97	128.80	40°14'48.198"N	104°54'19.561"W	11.82	
6876.00	40.820	267.840	6729.22	-88.76	983.32	101.01	40°14'48.182"N	104°54'19.919"W	11.97	
6921.00	47.650	269.160	6761.45	-57.41	982.52	69.64	40°14'48.174"N	104°54'20.324"W	15.31	
6966.00	54.680	267.480	6789.65	-22.41	981.46	34.63	40°14'48.164"N	104°54'20.775"W	15.89	
7011.00	59.270	266.090	6814.17	15.21	979.34	-3.03	40°14'48.143"N	104°54'21.261"W	10.52	
7056.00	61.700	266.020	6836.34	54.24	976.64	-42.09	40°14'48.116"N	104°54'21.765"W	5.40	
7101.00	63.310	267.600	6857.11	94.06	974.43	-81.94	40°14'48.094"N	104°54'22.279"W	4.74	
7146.00	64.930	268.490	6876.75	134.51	973.05	-122.41	40°14'48.081"N	104°54'22.801"W	4.02	
7191.00	67.020	269.430	6895.07	175.58	972.30	-163.50	40°14'48.073"N	104°54'23.330"W	5.02	
7236.00	70.830	269.330	6911.25	217.56	971.85	-205.48	40°14'48.069"N	104°54'23.872"W	8.47	
7281.00	76.040	269.970	6924.08	260.67	971.59	-248.59	40°14'48.066"N	104°54'24.428"W	11.66	
7294.00†	77.348	270.183	6927.07	273.32	971.61	-261.25	40°14'48.066"N	104°54'24.591"W	10.19	7" CASING POINT
7326.00	80.570	270.700	6933.20	304.72	971.85	-292.65	40°14'48.069"N	104°54'24.996"W	10.19	

### REFERENCE WELLPATH IDENTIFICATION

Operator	KERR-MCGEE OIL & GAS ONSHORE LP	Slot	SLOT#01 BERRY FARMS 30N-8HZ (1307'FNL & 300'FEL, SEC.08)
Area	COLORADO	Well	BERRY FARMS 30N-8HZ
Field	WELD COUNTY (KERR MCGEE)	Wellbore	BERRY FARMS 30N-8HZ AWP
Facility	SEC.08-T3N-R67W		

### WELLPATH DATA (137 stations)

MD [ft]	Inclination [°]	Azimuth [°]	TVD [ft]	Vert Sect [ft]	North [ft]	East [ft]	Latitude	Longitude	DLS [°/100ft]	Comments
7347.00	83.010	270.550	6936.20	325.50	972.07	-313.43	40°14'48.071"N	104°54'25.264"W	11.64	
7389.00	88.510	272.520	6939.30	367.36	973.20	-355.28	40°14'48.082"N	104°54'25.804"W	13.90	
7479.00	89.620	272.300	6940.77	457.31	976.98	-445.19	40°14'48.119"N	104°54'26.963"W	1.26	
7569.00	89.070	272.200	6941.80	547.27	980.52	-535.11	40°14'48.154"N	104°54'28.123"W	0.62	
7659.00	89.650	271.570	6942.80	637.25	983.48	-625.06	40°14'48.184"N	104°54'29.283"W	0.95	
7749.00	90.030	271.770	6943.05	727.23	986.10	-715.02	40°14'48.209"N	104°54'30.443"W	0.48	
7839.00	90.700	271.150	6942.48	817.22	988.39	-804.99	40°14'48.232"N	104°54'31.603"W	1.01	
7929.00	91.200	271.980	6940.99	907.20	990.85	-894.94	40°14'48.256"N	104°54'32.763"W	1.08	
8019.00	90.950	271.790	6939.30	997.17	993.81	-984.88	40°14'48.286"N	104°54'33.923"W	0.35	
8109.00	90.270	271.840	6938.34	1087.14	996.66	-1074.82	40°14'48.314"N	104°54'35.083"W	0.76	
8199.00	89.660	271.130	6938.40	1177.13	998.99	-1164.79	40°14'48.337"N	104°54'36.243"W	1.04	
8289.00	89.040	269.990	6939.42	1267.13	999.87	-1254.78	40°14'48.345"N	104°54'37.404"W	1.44	
8379.00	90.430	270.040	6939.83	1357.12	999.90	-1344.78	40°14'48.346"N	104°54'38.564"W	1.55	
8469.00	90.670	269.430	6938.97	1447.10	999.48	-1434.77	40°14'48.341"N	104°54'39.725"W	0.73	
8559.00	90.860	269.570	6937.77	1537.07	998.69	-1524.76	40°14'48.334"N	104°54'40.886"W	0.26	
8649.00	90.670	269.510	6936.57	1627.04	997.97	-1614.75	40°14'48.326"N	104°54'42.046"W	0.22	
8739.00	89.220	269.280	6936.65	1717.02	997.02	-1704.74	40°14'48.317"N	104°54'43.207"W	1.63	
8829.00	88.850	269.870	6938.17	1806.99	996.35	-1794.73	40°14'48.310"N	104°54'44.367"W	0.77	
8919.00	88.520	269.880	6940.24	1896.95	996.16	-1884.70	40°14'48.308"N	104°54'45.527"W	0.37	
9009.00	88.670	270.390	6942.44	1986.92	996.37	-1974.67	40°14'48.310"N	104°54'46.688"W	0.59	
9099.00	89.160	270.650	6944.15	2076.90	997.19	-2064.65	40°14'48.318"N	104°54'47.848"W	0.62	
9189.00	89.960	270.810	6944.84	2166.90	998.33	-2154.64	40°14'48.329"N	104°54'49.009"W	0.91	
9279.00	91.690	271.620	6943.54	2256.88	1000.24	-2244.61	40°14'48.348"N	104°54'50.169"W	2.12	
9369.00	91.230	272.200	6941.25	2346.83	1003.24	-2334.53	40°14'48.378"N	104°54'51.329"W	0.82	
9458.00	91.480	272.070	6939.14	2435.78	1006.55	-2423.44	40°14'48.410"N	104°54'52.475"W	0.32	
9548.00	90.860	271.860	6937.31	2525.74	1009.64	-2513.37	40°14'48.441"N	104°54'53.635"W	0.73	
9638.00	88.850	270.600	6937.53	2615.73	1011.57	-2603.34	40°14'48.460"N	104°54'54.795"W	2.64	
9728.00	88.850	270.840	6939.34	2705.71	1012.70	-2693.32	40°14'48.471"N	104°54'55.956"W	0.27	
9818.00	88.950	271.250	6941.07	2795.69	1014.34	-2783.29	40°14'48.487"N	104°54'57.116"W	0.47	
9908.00	89.440	270.930	6942.33	2885.68	1016.05	-2873.26	40°14'48.504"N	104°54'58.276"W	0.65	

# Actual Wellpath Report

BERRY FARMS 30N-8HZ AWP

Page 6 of 8

## REFERENCE WELLPATH IDENTIFICATION

Operator	KERR-MCGEE OIL & GAS ONSHORE LP	Slot	SLOT#01 BERRY FARMS 30N-8HZ (1307'FNL & 300'FEL, SEC.08)
Area	COLORADO	Well	BERRY FARMS 30N-8HZ
Field	WELD COUNTY (KERR MCGEE)	Wellbore	BERRY FARMS 30N-8HZ AWB
Facility	SEC.08-T3N-R67W		

## WELLPATH DATA (137 stations)

MD [ft]	Inclination [°]	Azimuth [°]	TVD [ft]	Vert Sect [ft]	North [ft]	East [ft]	Latitude	Longitude	DLS [°/100ft]	Comments
9998.00	89.230	270.580	6943.38	2975.68	1017.24	-2963.25	40°14'48.516"N	104°54'59.437"W	0.45	
10088.00	88.420	270.150	6945.22	3065.65	1017.81	-3053.23	40°14'48.521"N	104°55'00.597"W	1.02	
10178.00	89.750	269.900	6946.66	3155.63	1017.85	-3143.21	40°14'48.521"N	104°55'01.757"W	1.50	
10268.00	90.250	269.530	6946.66	3245.62	1017.41	-3233.21	40°14'48.517"N	104°55'02.918"W	0.69	
10358.00	90.730	270.290	6945.89	3335.61	1017.26	-3323.21	40°14'48.515"N	104°55'04.079"W	1.00	
10448.00	90.680	269.660	6944.78	3425.59	1017.22	-3413.20	40°14'48.515"N	104°55'05.239"W	0.70	
10538.00	91.070	269.510	6943.41	3515.56	1016.57	-3503.19	40°14'48.508"N	104°55'06.400"W	0.46	
10628.00	91.290	269.850	6941.55	3605.53	1016.07	-3593.17	40°14'48.503"N	104°55'07.560"W	0.45	
10718.00	91.320	269.440	6939.51	3695.49	1015.51	-3683.14	40°14'48.497"N	104°55'08.720"W	0.46	
10808.00	91.600	269.620	6937.21	3785.44	1014.77	-3773.11	40°14'48.490"N	104°55'09.881"W	0.37	
10898.00	91.190	269.660	6935.02	3875.40	1014.21	-3863.08	40°14'48.484"N	104°55'11.041"W	0.46	
10988.00	91.130	269.810	6933.20	3965.37	1013.79	-3953.06	40°14'48.480"N	104°55'12.201"W	0.18	
11078.00	90.950	269.800	6931.57	4055.34	1013.49	-4043.04	40°14'48.477"N	104°55'13.362"W	0.20	
11168.00	90.330	270.010	6930.56	4145.33	1013.34	-4133.04	40°14'48.475"N	104°55'14.522"W	0.73	
11258.00	89.130	269.420	6930.98	4235.31	1012.89	-4223.03	40°14'48.471"N	104°55'15.683"W	1.49	
11332.00	89.810	270.240	6931.67	4309.30	1012.67	-4297.03	40°14'48.468"N	104°55'16.637"W	1.44	LAST BHI MWD+ IFR SURVEYS
11400.00	89.810	270.240	6931.89	4377.30	1012.96	-4365.03	40°14'48.471"N	104°55'17.514"W	0.00	PROJECTION TO BIT

## HOLE & CASING SECTIONS - Ref Wellbore: BERRY FARMS 30N-8HZ AWB Ref Wellpath: BERRY FARMS 30N-8HZ AWP

String/Diameter	Start MD [ft]	End MD [ft]	Interval [ft]	Start TVD [ft]	End TVD [ft]	Start N/S [ft]	Start E/W [ft]	End N/S [ft]	End E/W [ft]
13.5in Open Hole	13.00	815.00	802.00	13.00	814.98	0.00	0.00	0.68	2.57
9.625in Casing Surface	13.00	815.00	802.00	13.00	814.98	0.00	0.00	0.68	2.57
8.75in Open Hole	815.00	7408.00	6593.00	814.98	6939.76	0.68	2.57	974.03	-374.26
7in Casing Intermediate	13.00	7294.00	7281.00	13.00	6927.07	0.00	0.00	971.61	-261.25
6.125in Open Hole	7408.00	11400.00	3992.00	6939.76	6931.89	974.03	-374.26	1012.96	-4365.03

# Actual Wellpath Report

BERRY FARMS 30N-8HZ AWP

Page 7 of 8

## REFERENCE WELLPATH IDENTIFICATION

Operator	KERR-MCGEE OIL & GAS ONSHORE LP	Slot	SLOT#01 BERRY FARMS 30N-8HZ (1307'FNL & 300'FEL, SEC.08)
Area	COLORADO	Well	BERRY FARMS 30N-8HZ
Field	WELD COUNTY (KERR MCGEE)	Wellbore	BERRY FARMS 30N-8HZ AWB
Facility	SEC.08-T3N-R67W		

## TARGETS

Name	MD [ft]	TVD [ft]	North [ft]	East [ft]	Grid East [US ft]	Grid North [US ft]	Latitude	Longitude	Shape
SEC.08-T3N-R67W SECTION LINES		0.00	0.00	0.00	3165843.86	1332293.12	40°14'38.465"N	104°54'21.222"W	polygon
BERRY FARMS 30N-8HZ BHL (330'FNL & 460'FWL, SEC.08) REV-2		6943.00	1029.85	-4390.51	3161446.74	1333293.48	40°14'48.638"N	104°55'17.843"W	point
BERRY FARMS 30N-8HZ BHL ON PLAT (350'FNL & 460'FWL, SEC.08) REV-1		6943.00	1009.85	-4390.51	3161446.88	1333273.49	40°14'48.440"N	104°55'17.843"W	point
BERRY FARMS 30N-8HZ LAND BOX		6943.00	0.00	0.00	3165843.86	1332293.12	40°14'38.465"N	104°54'21.222"W	polygon

## WELLPATH COMPOSITION - Ref Wellbore: BERRY FARMS 30N-8HZ AWB Ref Wellpath: BERRY FARMS 30N-8HZ AWP

Start MD [ft]	End MD [ft]	Positional Uncertainty Model	Log Name/Comment	Wellbore
13.00	709.00	Generic gyro - continuous (Standard)	MS ENERGY SERVICES GYRO SURVEY <113-709>	BERRY FARMS 30N-8HZ AWB
709.00	7347.00	NaviTrak (IFR)	BHI MWD+IFR SURVEYS 8 3/4" <920-7347>	BERRY FARMS 30N-8HZ AWB
7347.00	11332.00	NaviTrak (IFR)	BHI MWD+IFR SURVEYS 6 1/8" HOLE <7389-11332>	BERRY FARMS 30N-8HZ AWB
11332.00	11400.00	Blind Drilling (std)	Projection to bit	BERRY FARMS 30N-8HZ AWB

# Actual Wellpath Report

BERRY FARMS 30N-8HZ AWP

Page 8 of 8

## REFERENCE WELLPATH IDENTIFICATION

Operator	KERR-MCGEE OIL & GAS ONSHORE LP	Slot	SLOT#01 BERRY FARMS 30N-8HZ (1307'FNL & 300'FEL, SEC.08)
Area	COLORADO	Well	BERRY FARMS 30N-8HZ
Field	WELD COUNTY (KERR MCGEE)	Wellbore	BERRY FARMS 30N-8HZ AWB
Facility	SEC.08-T3N-R67W		

## WELLPATH COMMENTS

MD [ft]	Inclination [°]	Azimuth [°]	TVD [ft]	Comment
13.00	0.000	349.730	13.00	TIE-ON
113.00	0.350	349.730	113.00	BEGIN GYRO SURVEYS
709.00	0.540	334.870	708.98	TIE-INTO GYRO SURVEYS
920.00	0.260	175.020	919.98	BEGIN BHI MWD+IFR SURVEYS
7294.00	77.348	270.183	6927.07	7" CASING POINT
11332.00	89.810	270.240	6931.67	LAST BHI MWD+ IFR SURVEYS
11400.00	89.810	270.240	6931.89	PROJECTION TO BIT