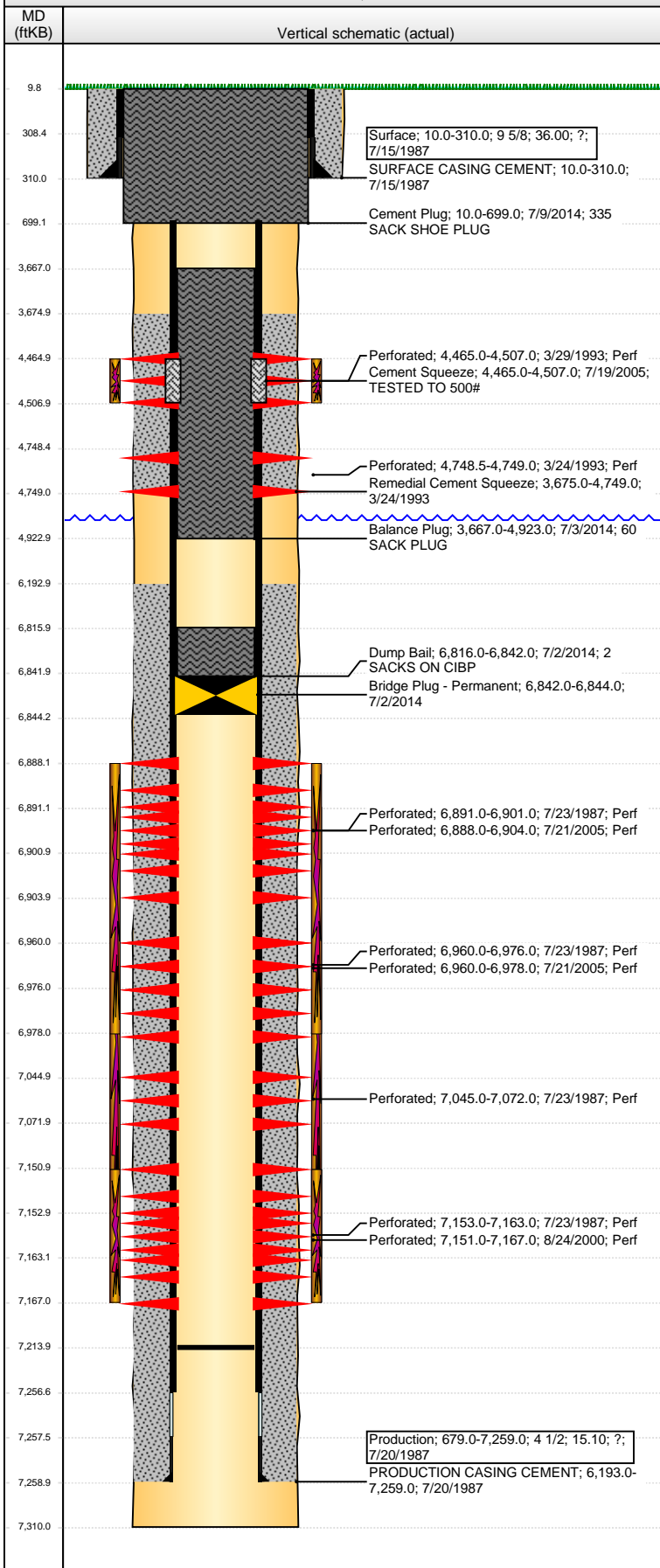


Well Name: GERRITY STATE G36-10

VERTICAL - ORIGINAL HOLE, 7/30/2014 2:12:48 PM



Well Header

API	Business Unit	District	Well Config
05-123-13514	DJ BASIN	15	VERTICAL
Original KB Elevation (ft)	KB - GL / MSL (ftKB)	Spud Date	P & A Date
4,853.00	10.00	7/15/1987	
Comment			

Directions To Well

Congressional Location

Quarter 1	Quarter 2	Quarter 3	Quarter 4	Section	Township	Twnshp N...	Range	Rng E/W Dir
		NW	SE	36	4	N	65	W

Bottom Hole Location

North-South Distance (ft)	From N or S Line	East-West Distance (ft)	From E or W Line

Plug Back Total Depths

Date	Depth (ftKB)	Method	Com
7/23/1987	7,223.0	CASED HOLE LOG	DEPTH LOGGER ON CBL
9/8/1997	7,147.0	TAG	CIBP REMNANTS
8/23/2000	7,212.0	TAG	PUSHED REMNANTS
4/30/2007	7,214.0	TAG	CLEAN OUT

Wellbore Sections

Section Des	Size (in)	Act Top, MD (ftKB)	Act Btm, MD (ftKB)
SURFACE	12 1/4	10.0	310.0
PRODUCTION	7 7/8	310.0	7,310.0

Zone Statuses

Zone Name	Status Date	Status	Job
SUSSEX	4/27/1993	PR	RECOMPLETION, 3/23/1993 00:00
SUSSEX	9/8/1997	PR	COMMINGLED ZONES, 9/5/1997 00:00
SUSSEX	7/19/2005	AB	RE-FRAC, 7/18/2005 00:00
NIOBRARA	7/28/1987	PR	DRILLING/COMPLETION - ORIGINAL, 7/15/1987 00:00
NIOBRARA	3/24/1993	SI	RECOMPLETION, 3/23/1993 00:00
NIOBRARA	9/8/1997	PR	COMMINGLED ZONES, 9/5/1997 00:00
NIOBRARA	8/12/2005	PR	RE-FRAC, 7/18/2005 00:00
NIOBRARA	9/3/2005	PR	RE-FRAC, 7/18/2005 00:00
CODELL	7/28/1987	PR	DRILLING/COMPLETION - ORIGINAL, 7/15/1987 00:00
CODELL	3/24/1993	SI	RECOMPLETION, 3/23/1993 00:00
CODELL	9/8/1997	PR	COMMINGLED ZONES, 9/5/1997 00:00
CODELL	9/22/2000	PR	RE-FRAC, 8/22/2000 00:00
CODELL	7/19/2005	SI	RE-FRAC, 7/18/2005 00:00
CODELL	9/3/2005	PR	RE-FRAC, 7/18/2005 00:00
CODELL	6/27/2007	PR	TRI-FRAC, 4/26/2007 00:00

Casing Strings

Surface, 310.0ftKB

Casing Description	Run Date	OD (in)	Wt/Len (l...)	Grade	Top, MD (ft...)	MD (ftKB)
Surface	7/15/1987	9 5/8	36.00	?	10.0	310.0

Production, 7,259.0ftKB

Casing Description	Run Date	OD (in)	Wt/Len (l...)	Grade	Top, MD (ft...)	MD (ftKB)
Production	7/20/1987	4 1/2	15.10	?	10.0	7,259.0

Cement

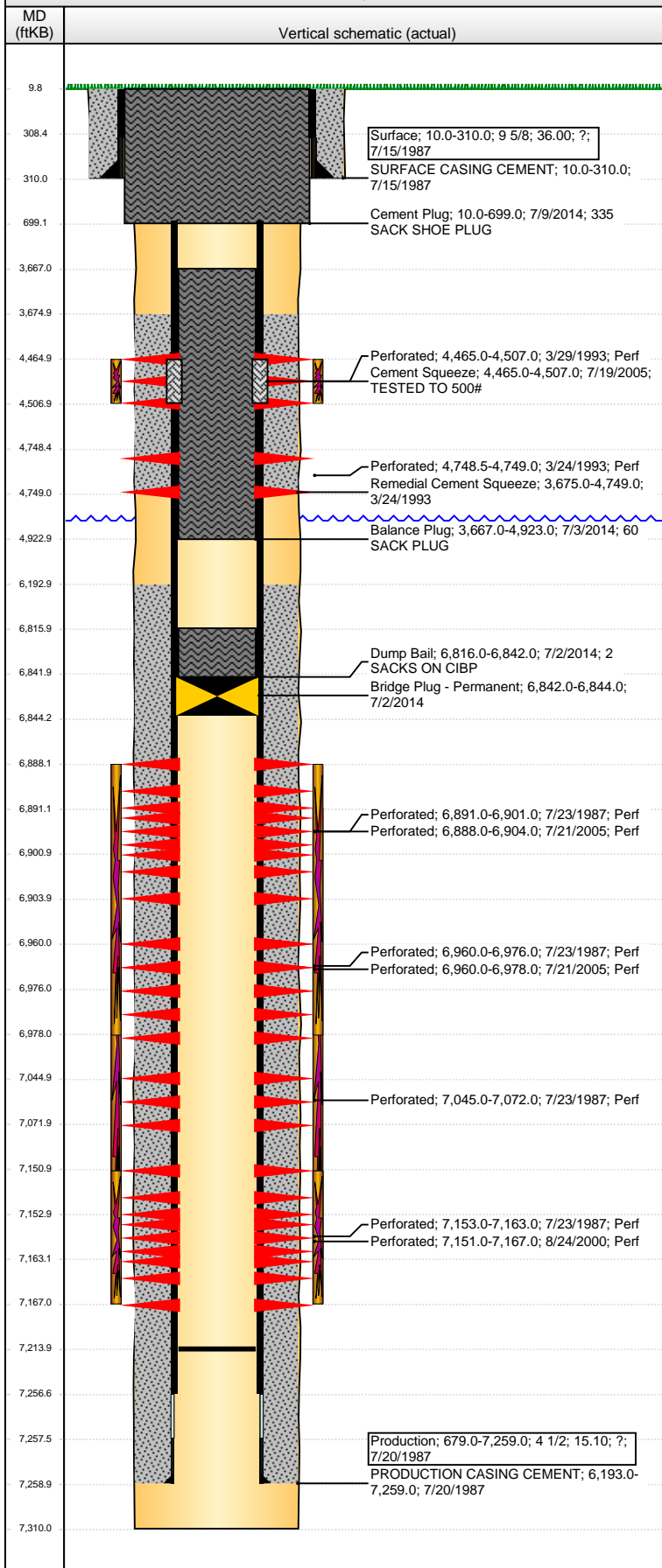
Description	Top Depth (ftKB)	Bottom Depth (ftKB)
SURFACE CASING CEMENT	10.0	310.0
Description	Top Depth (ftKB)	Bottom Depth (ftKB)
PRODUCTION CASING CEMENT	6,193.0	7,259.0
Description	Top Depth (ftKB)	Bottom Depth (ftKB)
Remedial Cement Squeeze	3,675.0	4,749.0
Description	Top Depth (ftKB)	Bottom Depth (ftKB)
Cement Squeeze	4,465.0	4,507.0
Description	Top Depth (ftKB)	Bottom Depth (ftKB)
Dump Bail	6,816.0	6,842.0
Description	Top Depth (ftKB)	Bottom Depth (ftKB)
Balance Plug	3,667.0	4,923.0
Description	Top Depth (ftKB)	Bottom Depth (ftKB)
Cement Plug	10.0	699.0

Tubing Components

Item Des	OD (in)	Wt (lb/ft)	Grade	Jts	Len (ft)	Btm (ftKB)	Btm (TVD) (ftKB)

Well Name: GERRITY STATE G36-10

VERTICAL - ORIGINAL HOLE, 7/30/2014 2:12:51 PM



Perforation Data		Entered Shot Total	Top (ftKB)	Btm (ftKB)	Date
Zone	Brnch/St g				
SUSSEX, ORIGINAL HOLE			4,465.00	4,507.00	3/29/1993
		2	4,748.50	4,749.00	3/24/1993
NIOBRARA, ORIGINAL HOLE		96	6,888.00	6,904.00	7/21/2005
NIOBRARA, ORIGINAL HOLE	A	2	6,891.00	6,901.00	7/23/1987
NIOBRARA, ORIGINAL HOLE	B	5	6,960.00	6,976.00	7/23/1987
NIOBRARA, ORIGINAL HOLE		108	6,960.00	6,978.00	7/21/2005
NIOBRARA, ORIGINAL HOLE	C	3	7,045.00	7,072.00	7/23/1987
CODELL, ORIGINAL HOLE		64	7,151.00	7,167.00	8/24/2000
CODELL, ORIGINAL HOLE		5	7,153.00	7,163.00	7/23/1987

Stimulations & Treatments			
Date	Zone	Primary Job Type	
7/27/1987	NIOBRARA-CODELL, ORIGINAL HOLE	DRILLING/COMPLETION - ORIGINAL	
Technical Result		Tech Result Details	Tech Result Note
Comment			
Date	Zone	Primary Job Type	
3/30/1993	SUSSEX, ORIGINAL HOLE	RECOMPLETION	
Technical Result		Tech Result Details	Tech Result Note
Comment			
Date	Zone	Primary Job Type	
9/19/2000	CODELL, ORIGINAL HOLE	RE-FRAC	
Technical Result		Tech Result Details	Tech Result Note
Comment			
Date	Zone	Primary Job Type	
8/11/2005	NIOBRARA, ORIGINAL HOLE	RE-FRAC	
Technical Result		Tech Result Details	Tech Result Note
Comment			
Date	Zone	Primary Job Type	
5/17/2007	CODELL, ORIGINAL HOLE	TRI-FRAC	
Technical Result		Tech Result Details	Tech Result Note
Comment			

Other In Hole				
Run Date	Des	OD (in)	Top (ftKB)	Btm (ftKB)
7/2/2014	Bridge Plug - Permanent	3.99	6,842.0	6,844.0

Logs			
Date	Type	Top, MD (ftKB)	Btm, MD (ftKB)
7/19/1987	COMPENSATED DENSITY	4,350.0	7,242.0
7/19/1987	INDUCTION	280.0	7,244.0
7/23/1987	SONIC	6,100.0	7,220.0
3/27/1993	CBL/CCL/GR	3,550.0	4,745.0
9/9/2013	GYRO	10.0	7,050.0