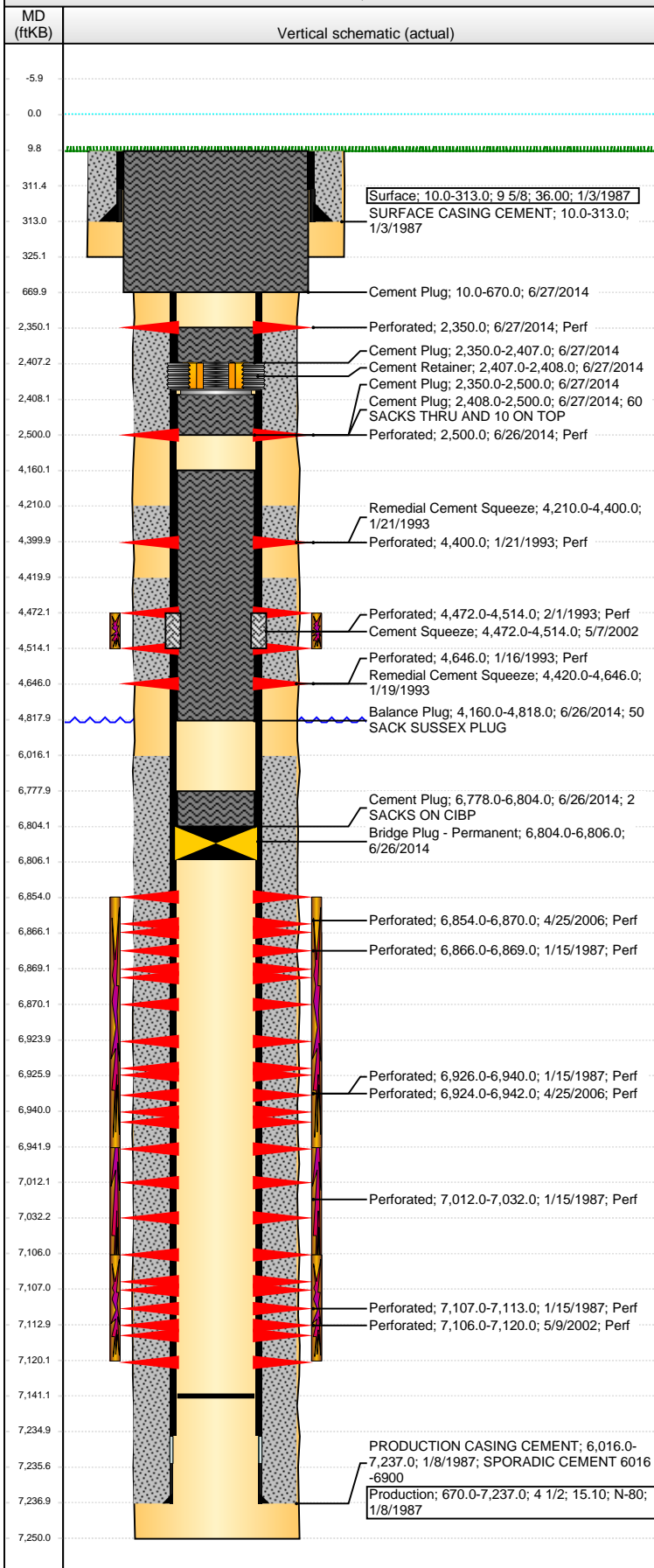


Well Name: GERRITY STATE G36-08

VERTICAL - ORIGINAL HOLE, 7/30/2014 9:09:50 AM



Well Header

API 05-123-13313	Business Unit DJ BASIN	District 15	Well Config VERTICAL
Original KB Elevation (ft) 4,856.00	KB - GL / MSL (ftKB) 10.00	Spud Date 1/3/1987	P & A Date 6/27/2014

Comment

sqz 1/93 w/700 sx @ 4646 & 4400,CIBP 7175,tight @ 4428

Directions To Well

RD 38 & 49, N 4/10, W 1/10, N INTO.

Congressional Location

Quarter 1	Quarter 2	Quarter 3	Quarter 4	Section	Township	Twnshp N...	Range	Rng E/W Dir
		SE	NE	36	4	N	65	W

Bottom Hole Location

North-South Distance (ft)	From N or S Line	East-West Distance (ft)	From E or W Line

Plug Back Total Depths

Date	Depth (ftKB)	Method	Com
1/15/1987	7,190.0	CASED HOLE LOG	DEPTH LOGGER ON CBL
5/14/2008	7,141.0	TAG	CLEAN OUT TO LAND TUBING

Wellbore Sections

Section Des	Size (in)	Act Top, MD (ftKB)	Act Btm, MD (ftKB)
SURFACE	12 1/4	10.0	325.0
PRODUCTION	7 7/8	325.0	7,250.0

Zone Statuses

Zone Name	Status Date	Status	Job
SUSSEX	2/18/1993	PR	RECOMPLETION, 1/14/1993 00:00
SUSSEX	9/2/1997	PR	COMMINGLE ZONES, 8/27/1997 00:00
SUSSEX	5/7/2002	AB	RE-FRAC, 5/3/2002 00:00
CODELL	2/1/1987	PR	DRILLING/COMPLETION - ORIGINAL, 1/3/1987 00:00
CODELL	1/14/1993	SI	RECOMPLETION, 1/14/1993 00:00
CODELL	9/2/1997	PR	COMMINGLE ZONES, 8/27/1997 00:00
CODELL	5/23/2002	PR	RE-FRAC, 5/3/2002 00:00
CODELL	4/25/2006	SI	RE-FRAC, 4/21/2006 00:00
CODELL	6/3/2006	PR	RE-FRAC, 4/21/2006 00:00
CODELL	6/18/2008	PR	TRI-FRAC, 4/24/2008 00:00
CODELL	6/27/2014	P&A	ABANDON WELL, 6/25/2014 11:00
NIOBRARA	2/1/1987	PR	DRILLING/COMPLETION - ORIGINAL, 1/3/1987 00:00
NIOBRARA	1/14/1993	SI	RECOMPLETION, 1/14/1993 00:00
NIOBRARA	9/2/1997	PR	COMMINGLE ZONES, 8/27/1997 00:00
NIOBRARA	5/23/2002	PR	RE-FRAC, 5/3/2002 00:00
NIOBRARA	5/21/2006	PR	RE-FRAC, 4/21/2006 00:00
NIOBRARA	6/3/2006	PR	RE-FRAC, 4/21/2006 00:00
NIOBRARA	6/27/2014	P&A	ABANDON WELL, 6/25/2014 11:00

Casing Strings

Surface, 313.0ftKB

Casing Description	Run Date	OD (in)	Wt/Len (l...)	Grade	Top, MD (ft...)	MD (ftKB)
Surface	1/3/1987	9 5/8	36.00		10.0	313.0

Production, 7,237.0ftKB

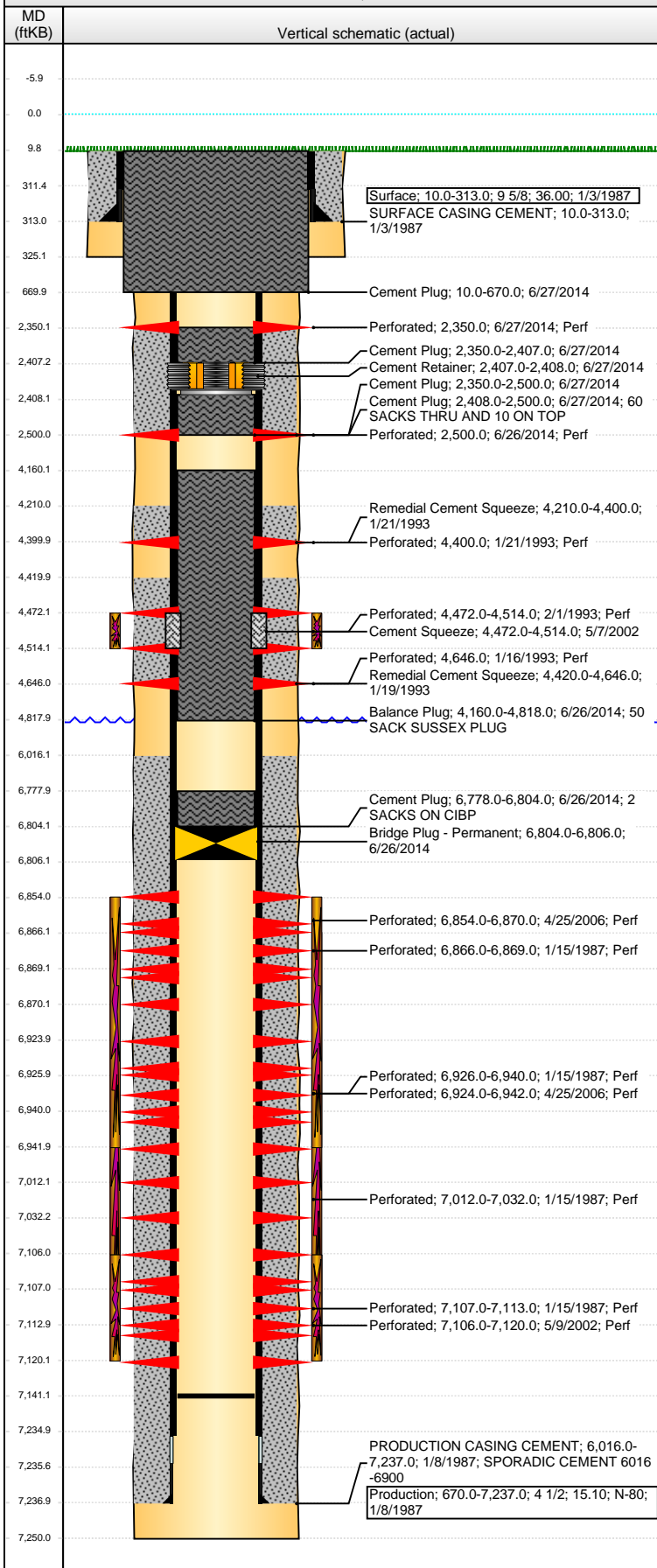
Casing Description	Run Date	OD (in)	Wt/Len (l...)	Grade	Top, MD (ft...)	MD (ftKB)
Production	1/8/1987	4 1/2	15.10	N-80	10.0	7,237.0

Cement

Description	Top Depth (ftKB)	Bottom Depth (ftKB)
SURFACE CASING CEMENT	10.0	313.0
PRODUCTION CASING CEMENT	6,016.0	7,237.0
Remedial Cement Squeeze	4,420.0	4,646.0
Remedial Cement Squeeze	4,210.0	4,400.0
Cement Squeeze	4,472.0	4,514.0
Cement Plug	6,778.0	6,804.0
Balance Plug	4,160.0	4,818.0
Cement Plug	2,350.0	2,500.0

Well Name: GERRITY STATE G36-08

VERTICAL - ORIGINAL HOLE, 7/30/2014 9:09:53 AM



Cement			
Description	Top Depth (ftKB)	Bottom Depth (ftKB)	
Cement Plug	2,350.0	2,407.0	
Description	Top Depth (ftKB)	Bottom Depth (ftKB)	
Cement Plug	2,408.0	2,500.0	
Description	Top Depth (ftKB)	Bottom Depth (ftKB)	
Cement Plug	10.0	670.0	

Tubing Components							
Item Des	OD (in)	Wt (lb/ft)	Grade	Jts	Len (ft)	Btm (ftKB)	Btm (TVD) (ftKB)

Perforation Data						
Zone	Bnch/St g	Entered Shot Total	Top (ftKB)	Btm (ftKB)	Date	
SUSSEX, ORIGINAL HOLE	A	2	2,350.00	2,350.00	6/27/2014	
		2	2,500.00	2,500.00	6/26/2014	
		2	4,400.00	4,400.00	1/21/1993	
		15	4,472.00	4,514.00	2/1/1993	
		2	4,646.00	4,646.00	1/16/1993	
NIOBRARA, ORIGINAL HOLE	A	96	6,854.00	6,870.00	4/25/2006	
NIOBRARA, ORIGINAL HOLE		2	6,866.00	6,869.00	1/15/1987	
NIOBRARA, ORIGINAL HOLE		108	6,924.00	6,942.00	4/25/2006	
NIOBRARA, ORIGINAL HOLE		5	6,926.00	6,940.00	1/15/1987	
NIOBRARA, ORIGINAL HOLE		3	7,012.00	7,032.00	1/15/1987	
CODELL, ORIGINAL HOLE	C	56	7,106.00	7,120.00	5/9/2002	
CODELL, ORIGINAL HOLE		5	7,107.00	7,113.00	1/15/1987	

Stimulations & Treatments			
Date	Zone	Primary Job Type	
1/16/1987	NIOBRARA-CODELL, ORIGINAL HOLE	DRILLING/COMPLETION - ORIGINAL	
Technical Result		Tech Result Details	Tech Result Note
Comment			
Date	Zone	Primary Job Type	
2/2/1993	SUSSEX, ORIGINAL HOLE	RECOMPLETION	
Technical Result		Tech Result Details	Tech Result Note
Comment			
Date	Zone	Primary Job Type	
5/21/2002	CODELL, ORIGINAL HOLE	RE-FRAC	
Technical Result		Tech Result Details	Tech Result Note
Comment			
Date	Zone	Primary Job Type	
5/19/2006	NIOBRARA, ORIGINAL HOLE	RE-FRAC	
Technical Result		Tech Result Details	Tech Result Note
Comment			
Date	Zone	Primary Job Type	
5/9/2008	CODELL, ORIGINAL HOLE	TRI-FRAC	
Technical Result		Tech Result Details	Tech Result Note
Success		According to Plan	
Comment			
(CODELL TF): JOB WENT WELL WITH NO ISSUES TO REPORT.			

Other In Hole				
Run Date	Des	OD (in)	Top (ftKB)	Btm (ftKB)
6/26/2014	Bridge Plug - Permanent	3.99	6,804.0	6,806.0
6/27/2014	Cement Retainer	3.99	2,407.0	2,408.0

Logs			
Date	Type	Top, MD (ftKB)	Btm, MD (ftKB)
1/7/1987	COMPENSATED DENSITY	4,351.0	7,264.0
1/7/1987	INDUCTION	51.0	7,264.0
1/15/1987	CEMENT BOND	5,800.0	7,181.0
1/13/1993	GAMMA RAY	4,300.0	4,700.0
1/21/1993	CBL/CCL/GR	4,300.0	4,606.0
1/27/1993	CBL/CCL/GR	4,100.0	4,621.0
3/2/2011	GYRO	10.0	7,000.0