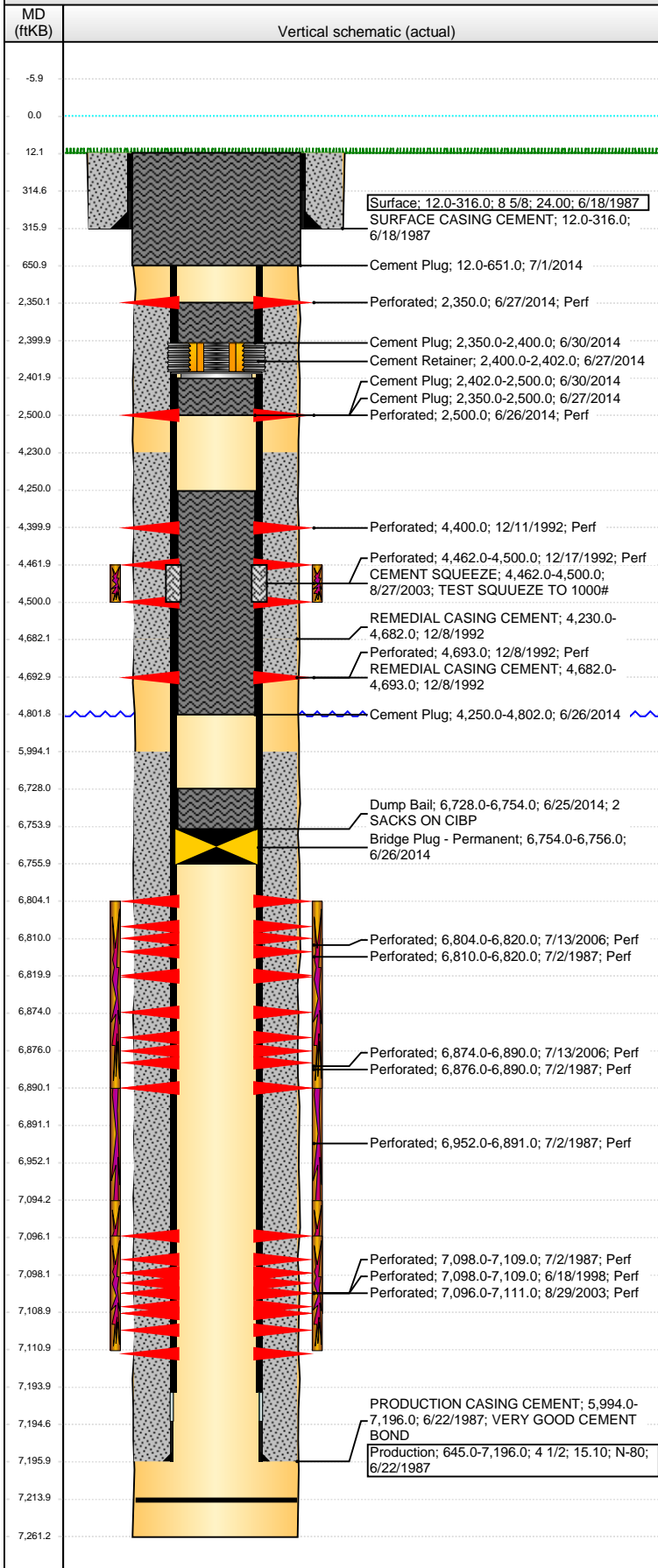


Well Name: GERRITY STATE G36-07 (FKA STATE F)

VERTICAL - ORIGINAL HOLE, 8/9/2014 1:19:08 PM



Well Header

API 05-123-13515	Business Unit DJ BASIN	District 15	Well Config VERTICAL
Original KB Elevation (ft) 4,838.00	KB - GL / MSL (ftKB) 12.00	Spud Date 6/18/1987	P & A Date 7/1/2014

Comment
MISSING WELL FILE; USED INFO FROM ST RPTS, SCHEMATIC, AND VANGIE REPORTS

DISCREPANCY: IDUCTION LOG KB 4836'; ST RPT/OPEN HOLE/CASED HOLE LOGS 4838. SCHEMATIC TD 7261'; COMPLETION RPT/VANGIE RPT TD 7260'. ST RPT PROD CMT 225 SXS; SCHEMATIC PROD CMT SXS 230

Directions To Well

Congressional Location

Quarter 1	Quarter 2	Quarter 3	Quarter 4	Section	Township	Twnshp N...	Range	Rng E/W Dir
		SW	NE	36	4	N	65	W

Bottom Hole Location

North-South Distance (ft)	From N or S Line	East-West Distance (ft)	From E or W Line

Plug Back Total Depths

Date	Depth (ftKB)	Method	Com
7/2/1987	7,171.0	CASED HOLE LOG	DEPTH LOGGER ON CBL
9/28/2006	7,214.0	TAG	CLEAN OUT TO LAND TUBING

Wellbore Sections

Section Des	Size (in)	Act Top, MD (ftKB)	Act Btm, MD (ftKB)
SURFACE	12 1/4	12.0	316.0
PRODUCTION	7 7/8	316.0	7,261.0

Zone Statuses

Zone Name	Status Date	Status	Job
CODELL	7/6/1987	PR	DRILLING/COMPLETION - ORIGINAL, 6/18/1987 00:00
CODELL	12/8/1992	SI	RECOMPLETION, 12/8/1992 00:00
CODELL	6/18/1993	PR	RECOMPLETION, 12/8/1992 00:00
CODELL	7/1/1998	PR	RE-FRAC, 6/16/1998 00:00
CODELL	8/22/2003	SI	TRI-FRAC, 8/18/2003 00:00
CODELL	9/12/2003	PR	TRI-FRAC, 8/18/2003 00:00
CODELL	7/12/2006	SI	RE-FRAC, 7/11/2006 00:00
CODELL	10/4/2006	PR	RE-FRAC, 7/11/2006 00:00
CODELL	7/1/2014	P&A	ABANDON WELL, 6/25/2014 06:00
SUSSEX	1/20/1993	PR	RECOMPLETION, 12/8/1992 00:00
SUSSEX	6/18/1993	PR	RECOMPLETION, 12/8/1992 00:00
SUSSEX	7/1/1998	PR	RE-FRAC, 6/16/1998 00:00
SUSSEX	8/27/2003	AB	TRI-FRAC, 8/18/2003 00:00
NIOBRARA	7/6/1987	PR	DRILLING/COMPLETION - ORIGINAL, 6/18/1987 00:00
NIOBRARA	12/8/1992	SI	RECOMPLETION, 12/8/1992 00:00
NIOBRARA	6/18/1993	PR	RECOMPLETION, 12/8/1992 00:00
NIOBRARA	7/1/1998	PR	RE-FRAC, 6/16/1998 00:00
NIOBRARA	8/22/2003	SI	TRI-FRAC, 8/18/2003 00:00
NIOBRARA	9/12/2003	PR	TRI-FRAC, 8/18/2003 00:00
NIOBRARA	9/12/2006	PR	RE-FRAC, 7/11/2006 00:00
NIOBRARA	10/4/2006	PR	RE-FRAC, 7/11/2006 00:00
NIOBRARA	7/1/2014	P&A	ABANDON WELL, 6/25/2014 06:00

Casing Strings

Surface, 316.0ftKB

Casing Description	Run Date	OD (in)	Wt/Len (l...)	Grade	Top, MD (ft...)	MD (ftKB)
Surface	6/18/1987	8 5/8	24.00		12.0	316.0

Production, 7,196.0ftKB

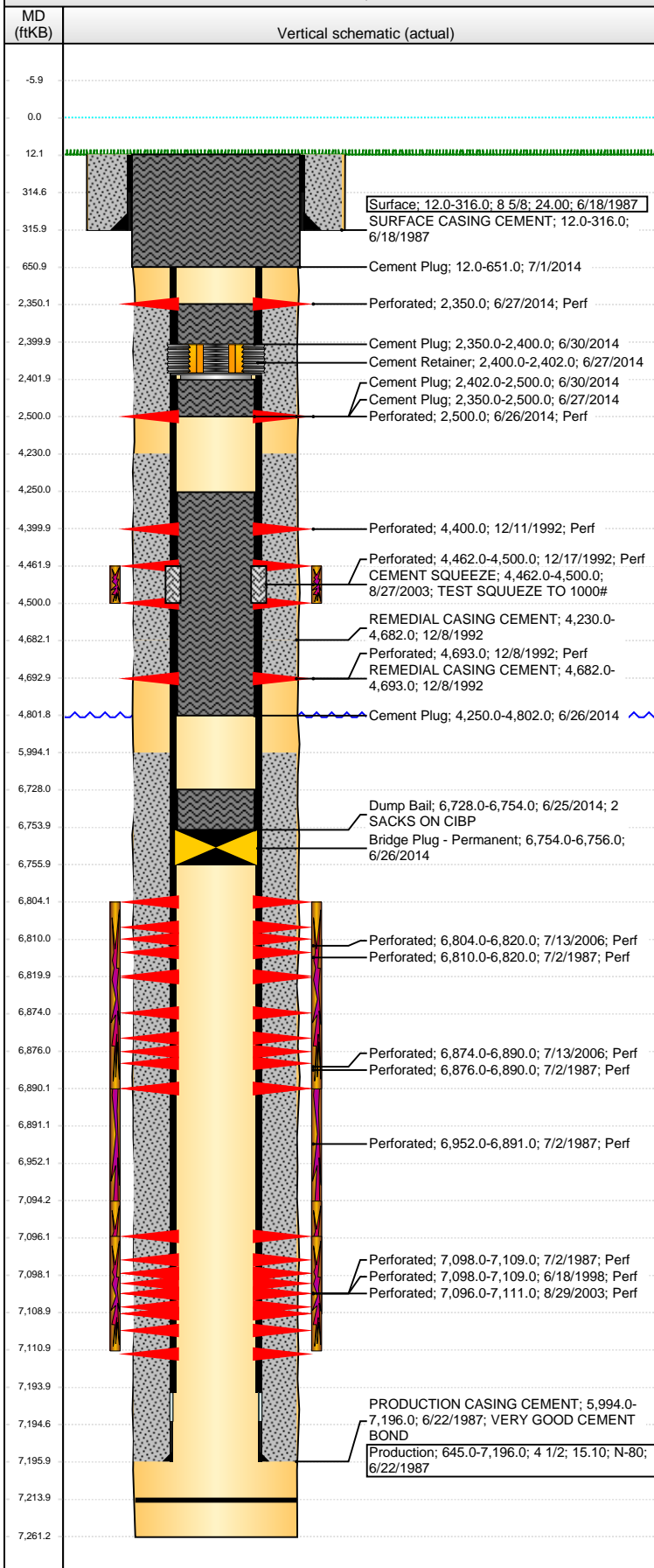
Casing Description	Run Date	OD (in)	Wt/Len (l...)	Grade	Top, MD (ft...)	MD (ftKB)
Production	6/22/1987	4 1/2	15.10	N-80	12.0	7,196.0

Cement

Description	Top Depth (ftKB)	Bottom Depth (ftKB)
SURFACE CASING CEMENT	12.0	316.0
Description	Top Depth (ftKB)	Bottom Depth (ftKB)
PRODUCTION CASING CEMENT	5,994.0	7,196.0
Description	Top Depth (ftKB)	Bottom Depth (ftKB)
REMEDIAL CASING CEMENT	4,230.0	4,682.0

Well Name: GERRITY STATE G36-07 (FKA STATE F)

VERTICAL - ORIGINAL HOLE, 8/9/2014 1:19:10 PM



Cement			
Description	Top Depth (ftKB)	Bottom Depth (ftKB)	
REMEDIAL CASING CEMENT	4,682.0	4,693.0	
Description	Top Depth (ftKB)	Bottom Depth (ftKB)	
CEMENT SQUEEZE	4,462.0	4,500.0	
Description	Top Depth (ftKB)	Bottom Depth (ftKB)	
Dump Bail	6,728.0	6,754.0	
Description	Top Depth (ftKB)	Bottom Depth (ftKB)	
Cement Plug	4,250.0	4,802.0	
Description	Top Depth (ftKB)	Bottom Depth (ftKB)	
Cement Plug	2,350.0	2,500.0	
Description	Top Depth (ftKB)	Bottom Depth (ftKB)	
Cement Plug	2,350.0	2,400.0	
Description	Top Depth (ftKB)	Bottom Depth (ftKB)	
Cement Plug	2,402.0	2,500.0	
Description	Top Depth (ftKB)	Bottom Depth (ftKB)	
Cement Plug	12.0	651.0	

Tubing Components							
Item Des	OD (in)	Wt (lb/ft)	Grade	Jts	Len (ft)	Btm (ftKB)	Btm (TVD) (ftKB)

Perforation Data					
Zone	Bnch/St g	Entered Shot Total	Top (ftKB)	Btm (ftKB)	Date
SUSSEX, ORIGINAL HOLE		2	2,350.00	2,350.00	6/27/2014
		2	2,500.00	2,500.00	6/26/2014
		2	4,400.00	4,400.00	12/11/1992
		15	4,462.00	4,500.00	12/17/1992
		2	4,693.00	4,693.00	12/8/1992
NIOBRARA, ORIGINAL HOLE	96	6,804.00	6,820.00	7/13/2006	
NIOBRARA, ORIGINAL HOLE	3	6,810.00	6,820.00	7/2/1987	
NIOBRARA, ORIGINAL HOLE	96	6,874.00	6,890.00	7/13/2006	
NIOBRARA, ORIGINAL HOLE	5	6,876.00	6,890.00	7/2/1987	
NIOBRARA, ORIGINAL HOLE	2	6,952.00	6,891.00	7/2/1987	
CODELL, ORIGINAL HOLE	60	7,096.00	7,111.00	8/29/2003	
CODELL, ORIGINAL HOLE	5	7,098.00	7,109.00	7/2/1987	
CODELL, ORIGINAL HOLE	30	7,098.00	7,109.00	6/18/1998	

Stimulations & Treatments			
Date	Zone	Primary Job Type	
7/3/1987	NIOBRARA-CODELL, ORIGINAL HOLE	DRILLING/COMPLETION - ORIGINAL	
Technical Result		Tech Result Details	Tech Result Note

Comment			
LIMITED ENTRY FRAC			
Date	Zone	Primary Job Type	
12/18/1992	SUSSEX, ORIGINAL HOLE	RECOMPLETION	
Technical Result		Tech Result Details	Tech Result Note

Comment			
Date	Zone	Primary Job Type	
6/23/1998	CODELL, ORIGINAL HOLE	RE-FRAC	
Technical Result		Tech Result Details	Tech Result Note

Comment			
Date	Zone	Primary Job Type	
9/9/2003	CODELL, ORIGINAL HOLE	TRI-FRAC	
Technical Result		Tech Result Details	Tech Result Note

Comment			
Date	Zone	Primary Job Type	
9/11/2006	NIOBRARA, ORIGINAL HOLE	RE-FRAC	
Technical Result		Tech Result Details	Tech Result Note

Other In Hole				
Run Date	Des	OD (in)	Top (ftKB)	Btm (ftKB)
6/26/2014	Bridge Plug - Permanent	3.99	6,754.0	6,756.0
6/27/2014	Cement Retainer	3.99	2,400.0	2,402.0

Well Name: GERRITY STATE G36-07 (FKA STATE F)

VERTICAL - ORIGINAL HOLE, 8/9/2014 1:19:13 PM

Logs

Date	Type	Top, MD (ftKB)	Btm, MD (ftKB)
6/22/1987	COMPENSATED DENSITY	4,345.0	7,274.0
6/22/1987	INDUCTION	296.0	7,274.0
7/2/1987	SONIC	5,950.0	7,160.0
12/16/1992	CEMENT BOND	4,100.0	4,682.0
11/6/2013	GYRO	10.0	4,682.0

