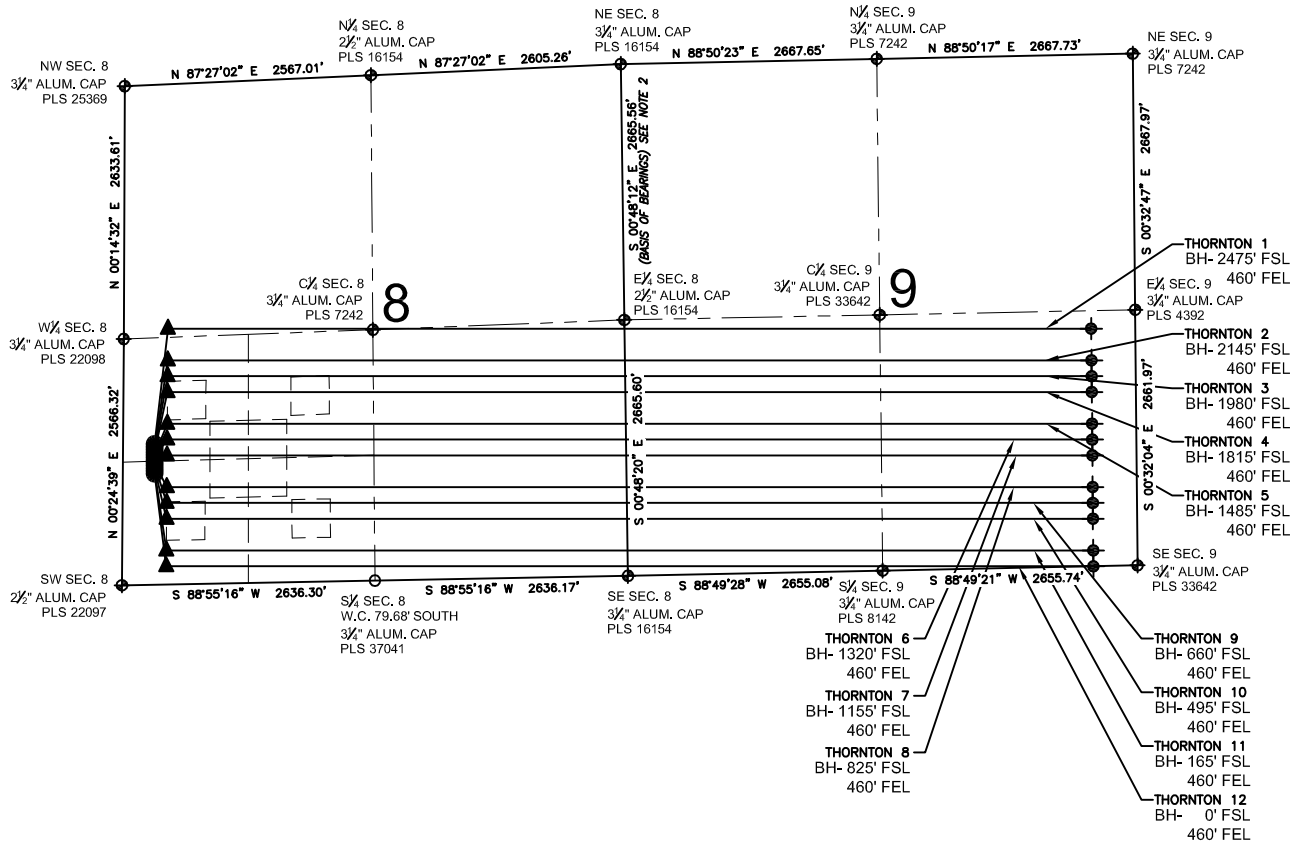


THORNTON 8-P PAD MULTI-WELL PLAN

SECTION 8 & 9, TOWNSHIP 7 NORTH, RANGE 66 WEST, 6TH P.M.



NOTES:

- THORNTON 1 TO BE AT 1465' FSL, 329' FWL. BOTTOM HOLE AT 2475' FSL & 460' FEL, SEC 9.
- THORNTON 2 TO BE AT 1437' FSL, 330' FWL. BOTTOM HOLE AT 2145' FSL & 460' FEL, SEC 9.
- THORNTON 3 TO BE AT 1409' FSL, 330' FWL. BOTTOM HOLE AT 1980' FSL & 460' FEL, SEC 9.
- THORNTON 4 TO BE AT 1381' FSL, 330' FWL. BOTTOM HOLE AT 1815' FSL & 460' FEL, SEC 9.
- THORNTON 5 TO BE AT 1353' FSL, 330' FWL. BOTTOM HOLE AT 1485' FSL & 460' FEL, SEC 9.
- THORNTON 6 TO BE AT 1325' FSL, 330' FWL. BOTTOM HOLE AT 1320' FSL & 460' FEL, SEC 9.
- THORNTON 7 TO BE AT 1297' FSL, 331' FWL. BOTTOM HOLE AT 1155' FSL & 460' FEL, SEC 9.
- THORNTON 8 TO BE AT 1269' FSL, 331' FWL. BOTTOM HOLE AT 825' FSL & 460' FEL, SEC 9.
- THORNTON 9 TO BE AT 1241' FSL, 331' FWL. BOTTOM HOLE AT 660' FSL & 460' FEL, SEC 9.
- THORNTON 10 TO BE AT 1213' FSL, 331' FWL. BOTTOM HOLE AT 495' FSL & 460' FEL, SEC 9.
- THORNTON 11 TO BE AT 1185' FSL, 331' FWL. BOTTOM HOLE AT 165' FSL & 460' FEL, SEC 9.
- THORNTON 12 TO BE AT 1157' FSL, 332' FWL. BOTTOM HOLE AT 0' FSL & 460' FEL, SEC 9.

LEGEND

- ⊕ = EXISTING MONUMENT ▲ = LANDING POINT
- = PROPOSED WELL LP = LANDING POINT
- ◆ = EXISTING WELL BH = BOTTOM HOLE
- ⊖ = BOTTOM HOLE

NOTES:

- THIS FIELD SURVEY CONFORMS TO THE MINIMUM STANDARDS SET BY THE C.O.G.C.C., RULE NO. 215
- BEARINGS AND DISTANCE SHOWN HEREON ARE GRID AND BASED ON THE COLORADO STATE PLANE COORDINATE SYSTEM, NAD 83/2011 BETWEEN MONUMENTS AS LABELED HEREON AND ELEVATIONS SHOWN ARE NAVD 88, AS DERIVED BY GPS OBSERVATIONS.
- GRID DISTANCES ARE SHOWN, AS MEASURED IN THE FIELD, WITH TIES TO WELLS MEASURED PERPENDICULAR TO SECTION LINES.

PREPARED BY:



EXTRACTION OIL & GAS

FIELD DATE: 05-02-14	PAD NAME: THORNTON 8-P PAD
DRAWING DATE: 05-19-14	SURFACE LOCATION: W 1/2 SW 1/4, SEC. 8, T7N, R66W, 6TH P.M.
BY: JLD	CHECKED: DRF
WELD COUNTY, COLORADO	

