

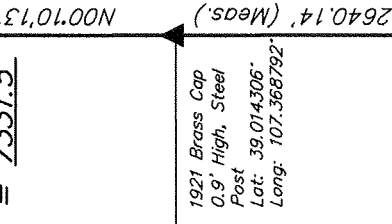
**GUNNISON ENERGY CORPORATION**

R	89	W
R	90	W

1927 Brass Cap  
0.9' High

Long: 107.368811°

DGU 1289 FEDERAL 18CS2  
Elev. Graded Ground = 7331.5'

$$10652' = 7331.5'$$


T

0.0516"

0.7' High, Steel  
Post  
Lat: 39.007061°  
Long: 107.368786°

Long: 10:00:00

[illegible]

1

\_\_\_\_\_

8.3 (SURFACE LOCATION)

LONGITUDE = 107°22'41.53" (

LONGITUDE = 107°22'39.34" (

COORD.: NAD 1927/ZON  
4177009 33 E. 96508

1921 Brass Cap  
1.1' High, Mound  
of Stones  
Lat: 39.007025°  
Long: 107.387242°

LEGEND:

$$= 90^\circ \text{ SYMBOL}$$

● = PROPOSED V

▲ = SECTION COM

\_\_\_\_\_

8.3 (SURFACE LOCATION)

TUDE = 39°01'01.69" (S)  
NITUDE = 107°22'41.53" (E)

27 (SURFACE LOCATION)  
TUBE = 39°01'01.73" (3

COORD.: NAD 1927/ZON