

T5N, R62W, 6th P.M.

BILL BARRETT CORPORATION

ANSCHUTZ STATE 5-62-35_36 NWNW PAD
#5-62-35-1609CH2
NW 1/4 NW 1/4, SECTION 35, T5N, R62W, 6th P.M.
WELD COUNTY, COLORADO

BASIS OF BEARINGS
BASIS OF BEARINGS IS A G.P.S. OBSERVATION
BASIS OF ELEVATION

SPOT ELEVATION LOCATED AT THE NORTHEAST CORNER OF SECTION 24, T5N, R62W, 6th. P.M. TAKEN FROM THE POINT OF ROCKS, QUADRANGLE, COLORADO, WELD COUNTY, 7.5 MINUTE QUAD (TOPOGRAPHIC MAP) PUBLISHED BY THE UNITED STATES DEPARTMENT OF THE INTERIOR, GEOLOGICAL SURVEY. SAID ELEVATION IS MARKED AS BEING 4530 FEET.

2011 Alum. Cap,
Flush W/Ground
Lat: 40.363653°
Long: 104.300061°

1974 Brass Cap
1.0 Above Ground
Lat: 40.363992°
Long: 104.280594°

1974 Brass Cap
Lat: 40.364336°
Long: 104.261575°

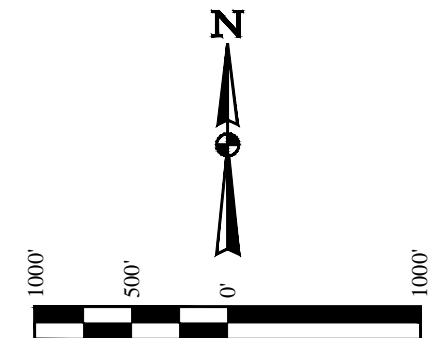
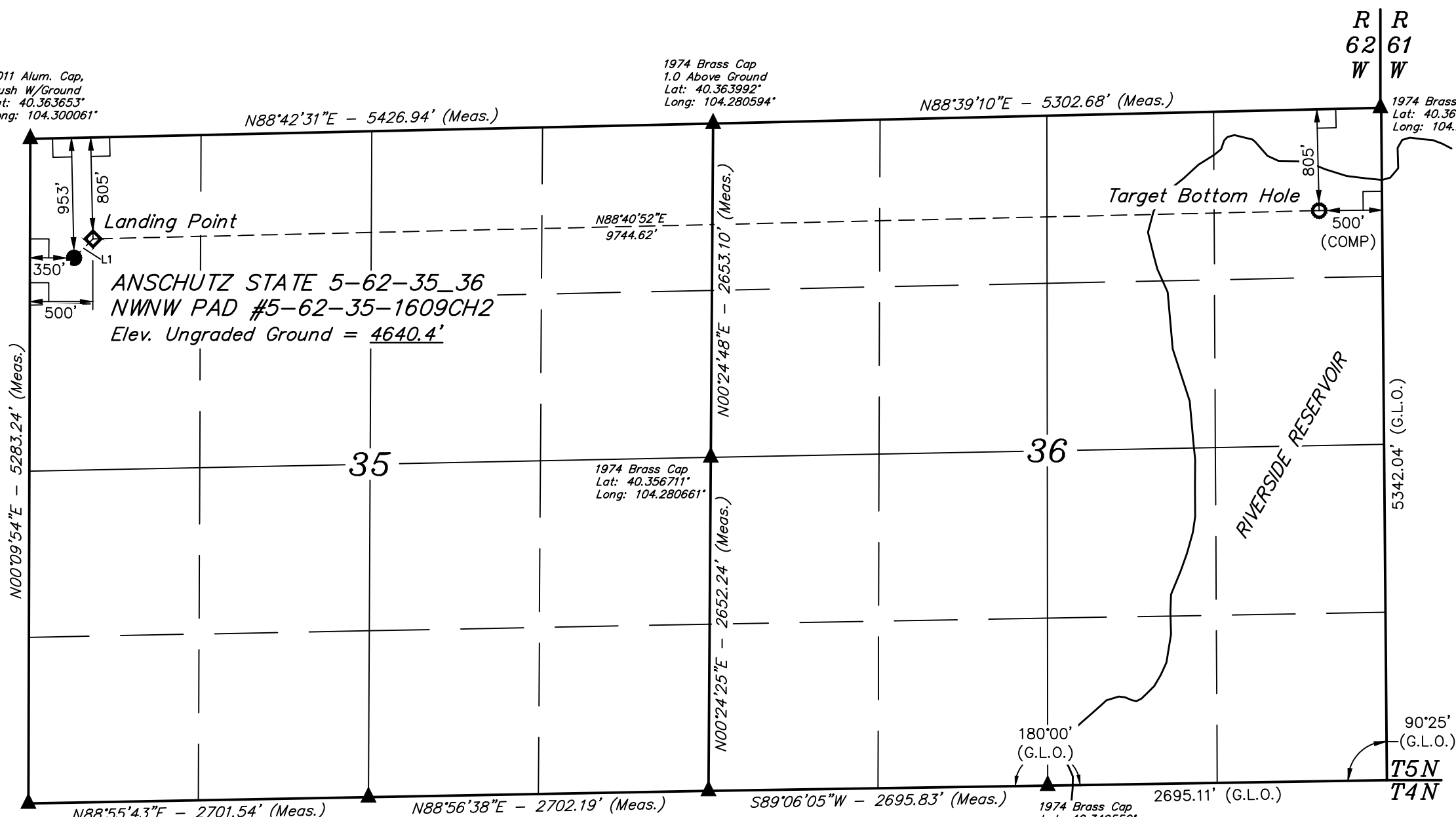
1974 Brass Cap
Lat: 40.356711°
Long: 104.280661°

1974 Brass Cap
Lat: 40.349550°
Long: 104.271058°

1974 Brass Cap
Lat: 40.349153°
Long: 104.300106°

1974 Brass Cap
Lat: 40.349294°
Long: 104.290417°

1974 Brass Cap
Lat: 40.349433°
Long: 104.280728°



LINE TABLE		
LINE	DIRECTION	LENGTH
L1	N44°46'29"E	213.50'

- LEGEND:**
- ◻ = 90° SYMBOL
 - = PROPOSED WELLHEAD.
 - = TARGET BOTTOM HOLE.
 - ◊ = LANDING POINT
 - ▲ = SECTION CORNERS LOCATED.

NAD 83 (TARGET BOTTOM HOLE)	NAD 83 (LANDING POINT)	NAD 83 (SURFACE LOCATION)
LATITUDE = 40°21'43.54" (40.362094)	LATITUDE = 40°21'41.30" (40.361472)	LATITUDE = 40°21'39.80" (40.361056)
LONGITUDE = 104°15'47.96" (104.263322)	LONGITUDE = 104°17'53.78" (104.298272)	LONGITUDE = 104°17'55.72" (104.298811)
NAD 27 (TARGET BOTTOM HOLE)	NAD 27 (LANDING POINT)	NAD 27 (SURFACE LOCATION)
LATITUDE = 40°21'43.61" (40.362114)	LATITUDE = 40°21'41.37" (40.361492)	LATITUDE = 40°21'39.87" (40.361075)
LONGITUDE = 104°15'46.14" (104.262817)	LONGITUDE = 104°17'51.96" (104.297767)	LONGITUDE = 104°17'53.90" (104.298306)
STATE PLANE NAD 83	STATE PLANE NAD 83	STATE PLANE NAD 83
N: 1377154.54 E: 3344608.76	N: 1376794.34 E: 3334873.34	N: 1376640.74 E: 3334725.13
STATE PLANE NAD 27	STATE PLANE NAD 27	STATE PLANE NAD 27
N: 377156.51 E: 2344758.84	N: 376796.30 E: 2335023.40	N: 376642.70 E: 2334875.20

PDOP = 1.7

UINTAH
ENGINEERING & LAND SURVEYING

UELS, LLC
Corporate Office * 85 South 200 East
Vernal, UT 84078 * (435) 789-1017

SURVEYED BY: DARREN SHANKS, D.M.S. DRAWN BY: J.W.
DATE: 04-16-14 SCALE: 1" = 1000' DATE: 08-06-14

WELL LOCATION PLAT

CERTIFICATE
THIS IS TO CERTIFY THAT THE ABOVE PLAT WAS PREPARED FROM FIELD NOTES OF ACTUAL SURVEYS MADE BY ME OR UNDER MY SUPERVISION AND THAT THE SAME ARE TRUE AND CORRECT TO THE BEST OF MY KNOWLEDGE AND BELIEF.

[Signature]
REGISTERED LAND SURVEYOR
REGISTRATION NO. 28285
STATE OF COLORADO
PROFESSIONAL LAND SURVEYOR