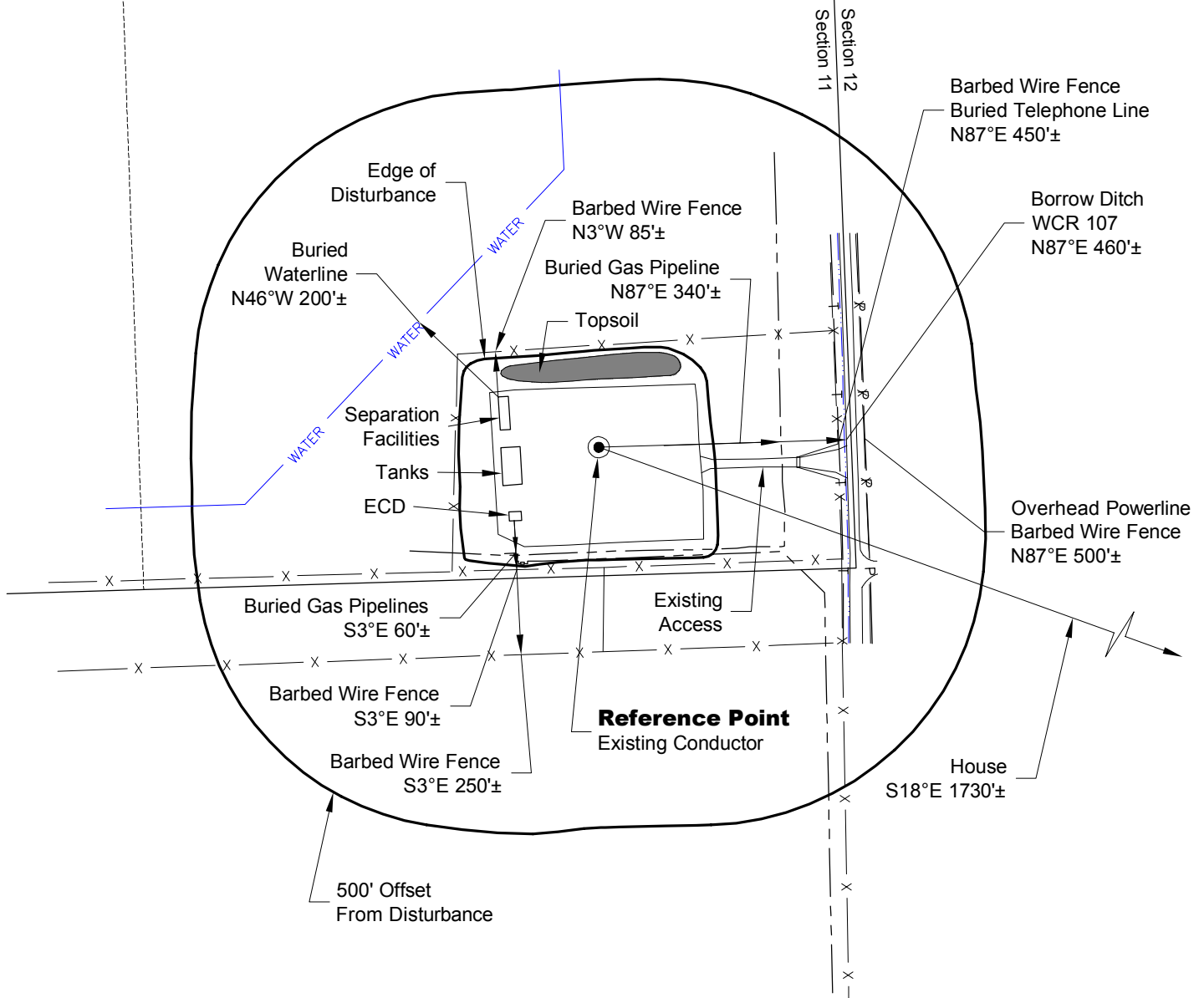


# LOCATION DRAWING

## REFERENCE POINT

LATITUDE: 40.75840  
 LONGITUDE: -104.05137  
 FOOTAGE: 240 FSL 472 FEL  
 GROUND ELEVATION: 5031.7  
 PDOP: 1.3 DATE: 6/24/2014  
 INSTRUMENT OPERATOR:  
 GARY ALGIEN



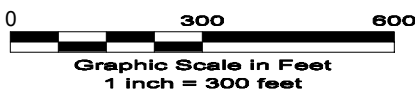
**NOTE:**  
 ALL PRODUCTION FACILITIES WILL BE ON PAD.

7/2/14

DISTURBANCE ACREAGE:  
 4.2± DRILLING OPERATIONS



North



LAND SURVEYING AND MAPPING  
 LAFAYETTE - WINTER PARK  
 Ph 303 666 0379 Fx 303 665 6320

**CARRIZO NIOBRARA LLC**  
**LAFAYETTE - WINTER PARK**

**SE1/4 SE1/4 SEC. 11 T9N R60W**  
**6th PM WELD COUNTY COLORADO**