

EXTRACTION OIL & GAS

Location: COLORADO Slot: SLOT#11 MEAD 11(1612'FNL & 405'FEL,SEC.09)
Field: WELD COUNTY (NAD83/TRUE NORTH) Well: MEAD 11
Facility: SEC.09-T07N-R66W Wellbore: MEAD 11 PWB

Plot reference wellpath is MEAD 11 (REV-A.0) PWP

True vertical depths are referenced to RIG (RKB)	Grid System: NAD83 / Lambert Colorado SP, Northern Zone (501), US feet
Measured depths are referenced to RIG (RKB)	North Reference: True north
RIG (RKB) to Mean Sea Level: 4991 feet	Scale: True distance
Mean Sea Level to Mud line (At Slot: SLOT#11 MEAD 11(1612'FNL & 405'FEL,SEC.09)): 0 feet	Depths are in feet
Coordinates are in feet referenced to Slot	Created by: painsetr on 6/13/2014

Location Information

Facility Name			Grid East (US ft)	Grid North (US ft)	Latitude	Longitude
SEC.09-T07N-R66W			3201342.822	1459836.887	40°35'36.208"N	104°46'29.986"W
Slot	Local N (ft)	Local E (ft)	Grid East (US ft)	Grid North (US ft)	Latitude	Longitude
SLOT#11 MEAD 11(1612FNL & 405FEL,SEC.09)	-260.19	-1.93	3201343.021	1459576.699	40°35'33.637"N	104°46'30.011"W
RIG (RKB) to Mud line (At Slot: SLOT#11 MEAD 11(1612FNL & 405FEL,SEC.09))					4991ft	
Mean Sea Level to Mud line (At Slot: SLOT#11 MEAD 11(1612FNL & 405FEL,SEC.09))					0ft	
RIG (RKB) to Mean Sea Level					4991ft	

Targets

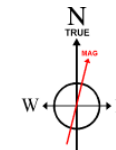
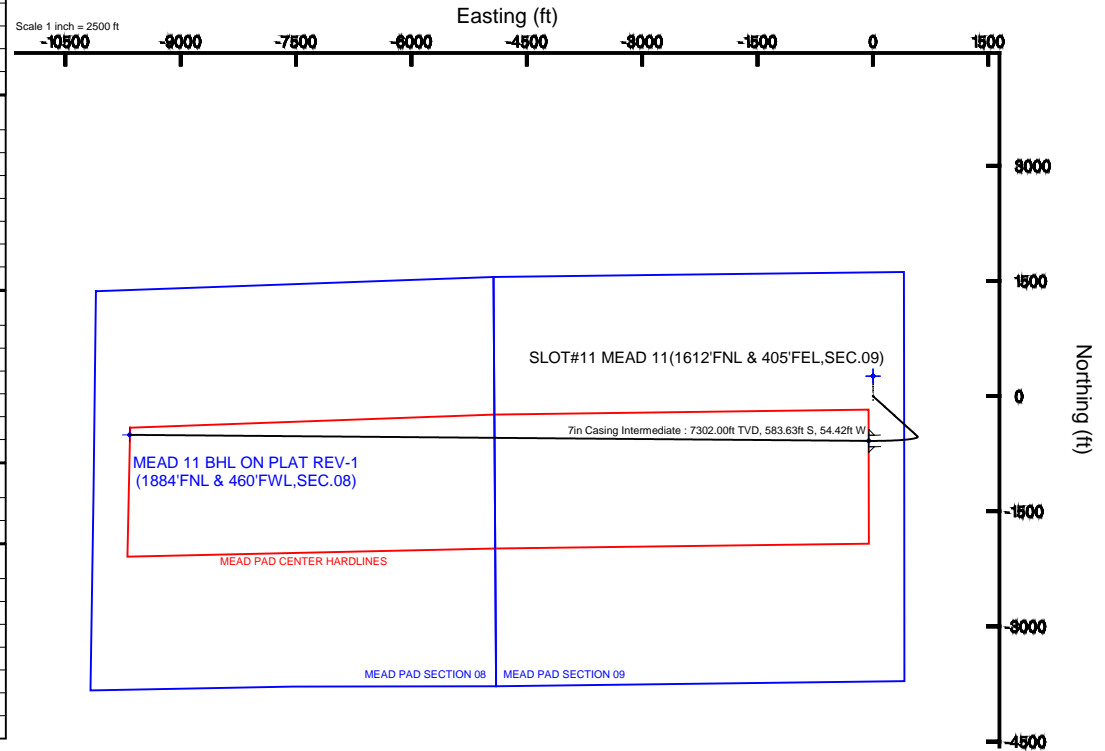
Name	MD (ft)	TVD (ft)	Local N (ft)	Local E (ft)	Grid East (US ft)	Grid North (US ft)	Latitude	Longitude
MEAD PAD SECTION 08		0.00	260.15	1.96	3201342.85	1459836.85	40°35'36.208"N	104°46'29.986"W
MEAD PAD SECTION 09		0.00	260.15	1.96	3201342.85	1459836.85	40°35'36.208"N	104°46'29.986"W
MEAD 11 BHL ON PLAT REV-1(1884'FNL & 460'FWL,SEC.08)	17332.73	7302.00	-504.86	-9664.78	3191682.95	1458992.86	40°35'28.630"N	104°48'35.287"W
MEAD 11 LANDING	7722.04	7302.00	-583.63	-54.42	3201293.38	1458992.66	40°35'27.870"N	104°46'30.716"W
MEAD PAD CENTER HARDLINES		7505.00	260.15	1.96	3201342.85	1459836.85	40°35'36.208"N	104°46'29.986"W

Survey Program

Start MD (ft)	End MD (ft)	Tool	Model	Log Name/Comment	Wellbore
24.00	18000.00	NaviTrak	NaviTrak (Standard)		MEAD 11 PWB

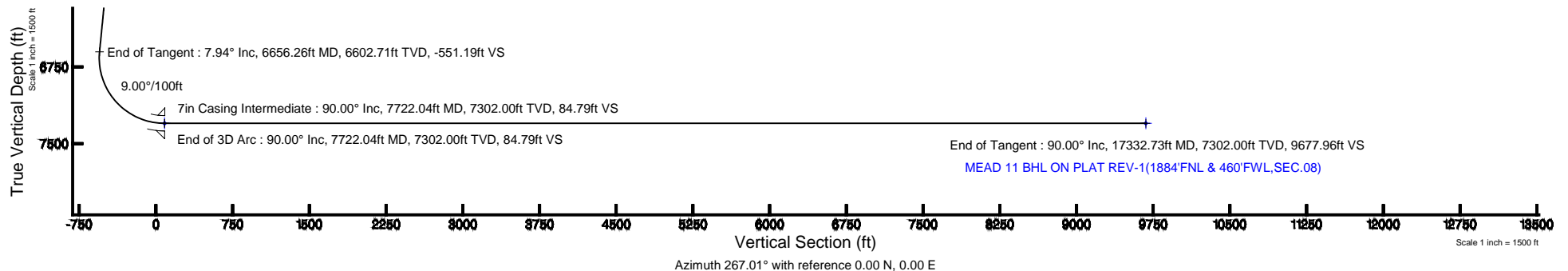
Well Profile Data

Design Comment	MD (ft)	Inc (°)	Az (°)	TVD (ft)	Local N (ft)	Local E (ft)	DLS (°/100ft)	VS (ft)
Tie On	24.00	0.000	132.131	24.00	0.00	0.00	0.00	0.00
End of Tangent	800.00	0.000	132.131	800.00	0.00	0.00	0.00	0.00
End of Build	1196.77	7.935	132.131	1195.51	-18.40	20.34	2.00	-19.36
End of Tangent	6656.26	7.935	132.131	6602.71	-524.02	579.31	0.00	-551.19
End of 3D Arc	7722.04	90.000	270.470	7302.00	-583.63	-54.42	9.00	84.79
End of Tangent	17332.73	90.000	270.470	7302.00	-504.86	-9664.78	0.00	9677.96



BGGM (1945.0 to 2016.0) Dip: 67.10° Field: 52862.2 nT
Magnetic North is 8.56 degrees East of True North (at 6/12/2014)

To correct azimuth from Magnetic to True add 8.56 degrees





Planned Wellpath Report

MEAD 11 (REV-A.0) PWP

Page 1 of 8



REFERENCE WELLPATH IDENTIFICATION

Operator	EXTRACTION OIL & GAS	Slot	SLOT#11 MEAD 11(1612'FNL & 405'FEL,SEC.09)
Area	COLORADO	Well	MEAD 11
Field	WELD COUNTY (NAD83/TRUE NORTH)	Wellbore	MEAD 11 PWB
Facility	SEC.09-T07N-R66W		

REPORT SETUP INFORMATION

Projection System	NAD83 / Lambert Colorado SP, Northern Zone (501), US feet	Software System	WellArchitect® 4.0.0
North Reference	True	User	Painsetr
Scale	0.999975	Report Generated	6/13/2014 at 12:07:10 PM
Convergence at slot	n/a	Database/Source file	WA_Denver/MEAD_11_PWB.xml

WELLPATH LOCATION

	Local coordinates		Grid coordinates		Geographic coordinates	
	North[ft]	East[ft]	Easting[US ft]	Northing[US ft]	Latitude	Longitude
Slot Location	-260.19	-1.93	3201343.02	1459576.70	40°35'33.637"N	104°46'30.011"W
Facility Reference Pt			3201342.82	1459836.89	40°35'36.208"N	104°46'29.986"W
Field Reference Pt			3185481.27	1419166.81	40°28'55.560"N	104°49'59.556"W

WELLPATH DATUM

Calculation method	Minimum curvature	RIG (RKB) to Facility Vertical Datum	4991.00ft
Horizontal Reference Pt	Slot	RIG (RKB) to Mean Sea Level	4991.00ft
Vertical Reference Pt	RIG (RKB)	RIG (RKB) to Mud Line at Slot (SLOT#11 MEAD 11(1612'FNL & 405'FEL,SEC.09))	4991.00ft
MD Reference Pt	RIG (RKB)	Section Origin	N 0.00, E 0.00 ft
Field Vertical Reference	Mean Sea Level	Section Azimuth	267.01°



Planned Wellpath Report

MEAD 11 (REV-A.0) PWP

Page 2 of 8



REFERENCE WELLPATH IDENTIFICATION

Operator	EXTRACTION OIL & GAS	Slot	SLOT#11 MEAD 11(1612'FNL & 405'FEL,SEC.09)
Area	COLORADO	Well	MEAD 11
Field	WELD COUNTY (NAD83/TRUE NORTH)	Wellbore	MEAD 11 PWB
Facility	SEC.09-T07N-R66W		

WELLPATH DATA (180 stations) † = interpolated/extrapolated station

MD [ft]	Inclination [°]	Azimuth [°]	TVD [ft]	Vert Sect [ft]	North [ft]	East [ft]	DLS [°/100ft]	Comments
0.00†	0.000	132.131	0.00	0.00	0.00	0.00	0.00	
24.00	0.000	132.131	24.00	0.00	0.00	0.00	0.00	Tie On
124.00†	0.000	132.131	124.00	0.00	0.00	0.00	0.00	
224.00†	0.000	132.131	224.00	0.00	0.00	0.00	0.00	
324.00†	0.000	132.131	324.00	0.00	0.00	0.00	0.00	
424.00†	0.000	132.131	424.00	0.00	0.00	0.00	0.00	
524.00†	0.000	132.131	524.00	0.00	0.00	0.00	0.00	
624.00†	0.000	132.131	624.00	0.00	0.00	0.00	0.00	
724.00†	0.000	132.131	724.00	0.00	0.00	0.00	0.00	
800.00	0.000	132.131	800.00	0.00	0.00	0.00	0.00	End of Tangent
824.00†	0.480	132.131	824.00	-0.07	-0.07	0.07	2.00	
924.00†	2.480	132.131	923.96	-1.89	-1.80	1.99	2.00	
1024.00†	4.480	132.131	1023.77	-6.18	-5.87	6.49	2.00	
1124.00†	6.480	132.131	1123.31	-12.91	-12.28	13.57	2.00	
1196.77	7.935	132.131	1195.51	-19.36	-18.40	20.34	2.00	End of Build
1224.00†	7.935	132.131	1222.47	-22.01	-20.92	23.13	0.00	
1324.00†	7.935	132.131	1321.51	-31.75	-30.19	33.37	0.00	
1424.00†	7.935	132.131	1420.56	-41.49	-39.45	43.61	0.00	
1524.00†	7.935	132.131	1519.60	-51.23	-48.71	53.85	0.00	
1624.00†	7.935	132.131	1618.64	-60.97	-57.97	64.09	0.00	
1724.00†	7.935	132.131	1717.68	-70.72	-67.23	74.32	0.00	
1824.00†	7.935	132.131	1816.73	-80.46	-76.49	84.56	0.00	
1924.00†	7.935	132.131	1915.77	-90.20	-85.75	94.80	0.00	
2024.00†	7.935	132.131	2014.81	-99.94	-95.01	105.04	0.00	
2124.00†	7.935	132.131	2113.85	-109.68	-104.28	115.28	0.00	
2224.00†	7.935	132.131	2212.90	-119.42	-113.54	125.52	0.00	
2324.00†	7.935	132.131	2311.94	-129.16	-122.80	135.76	0.00	
2424.00†	7.935	132.131	2410.98	-138.91	-132.06	145.99	0.00	
2524.00†	7.935	132.131	2510.02	-148.65	-141.32	156.23	0.00	
2624.00†	7.935	132.131	2609.07	-158.39	-150.58	166.47	0.00	



Planned Wellpath Report

MEAD 11 (REV-A.0) PWP

Page 3 of 8



REFERENCE WELLPATH IDENTIFICATION

Operator	EXTRACTION OIL & GAS	Slot	SLOT#11 MEAD 11(1612'FNL & 405'FEL,SEC.09)
Area	COLORADO	Well	MEAD 11
Field	WELD COUNTY (NAD83/TRUE NORTH)	Wellbore	MEAD 11 PWB
Facility	SEC.09-T07N-R66W		

WELLPATH DATA (180 stations) † = interpolated/extrapolated station

MD [ft]	Inclination [°]	Azimuth [°]	TVD [ft]	Vert Sect [ft]	North [ft]	East [ft]	DLS [°/100ft]	Comments
2724.00†	7.935	132.131	2708.11	-168.13	-159.84	176.71	0.00	
2824.00†	7.935	132.131	2807.15	-177.87	-169.11	186.95	0.00	
2924.00†	7.935	132.131	2906.19	-187.61	-178.37	197.19	0.00	
3024.00†	7.935	132.131	3005.24	-197.35	-187.63	207.42	0.00	
3124.00†	7.935	132.131	3104.28	-207.10	-196.89	217.66	0.00	
3224.00†	7.935	132.131	3203.32	-216.84	-206.15	227.90	0.00	
3324.00†	7.935	132.131	3302.36	-226.58	-215.41	238.14	0.00	
3424.00†	7.935	132.131	3401.41	-236.32	-224.67	248.38	0.00	
3524.00†	7.935	132.131	3500.45	-246.06	-233.94	258.62	0.00	
3624.00†	7.935	132.131	3599.49	-255.80	-243.20	268.86	0.00	
3724.00†	7.935	132.131	3698.53	-265.54	-252.46	279.09	0.00	
3824.00†	7.935	132.131	3797.57	-275.29	-261.72	289.33	0.00	
3924.00†	7.935	132.131	3896.62	-285.03	-270.98	299.57	0.00	
4024.00†	7.935	132.131	3995.66	-294.77	-280.24	309.81	0.00	
4124.00†	7.935	132.131	4094.70	-304.51	-289.50	320.05	0.00	
4224.00†	7.935	132.131	4193.74	-314.25	-298.76	330.29	0.00	
4324.00†	7.935	132.131	4292.79	-323.99	-308.03	340.53	0.00	
4424.00†	7.935	132.131	4391.83	-333.73	-317.29	350.76	0.00	
4524.00†	7.935	132.131	4490.87	-343.48	-326.55	361.00	0.00	
4624.00†	7.935	132.131	4589.91	-353.22	-335.81	371.24	0.00	
4724.00†	7.935	132.131	4688.96	-362.96	-345.07	381.48	0.00	
4824.00†	7.935	132.131	4788.00	-372.70	-354.33	391.72	0.00	
4924.00†	7.935	132.131	4887.04	-382.44	-363.59	401.96	0.00	
5024.00†	7.935	132.131	4986.08	-392.18	-372.86	412.20	0.00	
5124.00†	7.935	132.131	5085.13	-401.92	-382.12	422.43	0.00	
5224.00†	7.935	132.131	5184.17	-411.67	-391.38	432.67	0.00	
5324.00†	7.935	132.131	5283.21	-421.41	-400.64	442.91	0.00	
5424.00†	7.935	132.131	5382.25	-431.15	-409.90	453.15	0.00	
5524.00†	7.935	132.131	5481.30	-440.89	-419.16	463.39	0.00	
5624.00†	7.935	132.131	5580.34	-450.63	-428.42	473.63	0.00	



Planned Wellpath Report

MEAD 11 (REV-A.0) PWP

Page 4 of 8



REFERENCE WELLPATH IDENTIFICATION			
Operator	EXTRACTION OIL & GAS	Slot	SLOT#11 MEAD 11(1612'FNL & 405'FEL,SEC.09)
Area	COLORADO	Well	MEAD 11
Field	WELD COUNTY (NAD83/TRUE NORTH)	Wellbore	MEAD 11 PWB
Facility	SEC.09-T07N-R66W		

WELLPATH DATA (180 stations) † = interpolated/extrapolated station								
MD [ft]	Inclination [°]	Azimuth [°]	TVD [ft]	Vert Sect [ft]	North [ft]	East [ft]	DLS [°/100ft]	Comments
5724.00†	7.935	132.131	5679.38	-460.37	-437.68	483.86	0.00	
5824.00†	7.935	132.131	5778.42	-470.12	-446.95	494.10	0.00	
5924.00†	7.935	132.131	5877.47	-479.86	-456.21	504.34	0.00	
6024.00†	7.935	132.131	5976.51	-489.60	-465.47	514.58	0.00	
6124.00†	7.935	132.131	6075.55	-499.34	-474.73	524.82	0.00	
6224.00†	7.935	132.131	6174.59	-509.08	-483.99	535.06	0.00	
6324.00†	7.935	132.131	6273.64	-518.82	-493.25	545.30	0.00	
6424.00†	7.935	132.131	6372.68	-528.56	-502.51	555.53	0.00	
6524.00†	7.935	132.131	6471.72	-538.31	-511.78	565.77	0.00	
6624.00†	7.935	132.131	6570.76	-548.05	-521.04	576.01	0.00	
6656.26	7.935	132.131	6602.71	-551.19	-524.02	579.31	0.00	End of Tangent
6724.00†	5.297	182.382	6670.05	-554.20	-530.29	582.66	9.00	
6824.00†	10.583	240.737	6769.19	-545.51	-539.41	574.44	9.00	
6924.00†	18.907	254.774	6865.84	-521.40	-548.17	550.74	9.00	
7024.00†	27.649	260.282	6957.62	-482.44	-556.36	512.16	9.00	
7124.00†	36.509	263.279	7042.27	-429.61	-563.77	459.64	9.00	
7224.00†	45.419	265.230	7117.71	-364.19	-570.23	394.47	9.00	
7324.00†	54.353	266.659	7182.08	-287.81	-575.57	318.27	9.00	
7424.00†	63.300	267.799	7233.79	-202.34	-579.66	232.89	9.00	
7524.00†	72.255	268.770	7271.58	-109.88	-582.41	140.46	9.00	
7624.00†	81.214	269.649	7294.50	-12.72	-583.73	43.23	9.00	
7722.04	90.000	270.470	7302.00 ¹	84.79	-583.63	-54.42	9.00	End of 3D Arc
7724.00†	90.000	270.470	7302.00	86.75	-583.61	-56.38	0.00	
7824.00†	90.000	270.470	7302.00	186.57	-582.79	-156.38	0.00	
7924.00†	90.000	270.470	7302.00	286.38	-581.97	-256.37	0.00	
8024.00†	90.000	270.470	7302.00	386.20	-581.15	-356.37	0.00	
8124.00†	90.000	270.470	7302.00	486.02	-580.33	-456.37	0.00	
8224.00†	90.000	270.470	7302.00	585.84	-579.51	-556.36	0.00	
8324.00†	90.000	270.470	7302.00	685.66	-578.69	-656.36	0.00	
8424.00†	90.000	270.470	7302.00	785.47	-577.87	-756.36	0.00	



Planned Wellpath Report

MEAD 11 (REV-A.0) PWP

Page 5 of 8



REFERENCE WELLPATH IDENTIFICATION

Operator	EXTRACTION OIL & GAS	Slot	SLOT#11 MEAD 11(1612'FNL & 405'FEL,SEC.09)
Area	COLORADO	Well	MEAD 11
Field	WELD COUNTY (NAD83/TRUE NORTH)	Wellbore	MEAD 11 PWB
Facility	SEC.09-T07N-R66W		

WELLPATH DATA (180 stations) † = interpolated/extrapolated station

MD [ft]	Inclination [°]	Azimuth [°]	TVD [ft]	Vert Sect [ft]	North [ft]	East [ft]	DLS [°/100ft]	Comments
8524.00†	90.000	270.470	7302.00	885.29	-577.05	-856.35	0.00	
8624.00†	90.000	270.470	7302.00	985.11	-576.23	-956.35	0.00	
8724.00†	90.000	270.470	7302.00	1084.93	-575.42	-1056.35	0.00	
8824.00†	90.000	270.470	7302.00	1184.74	-574.60	-1156.34	0.00	
8924.00†	90.000	270.470	7302.00	1284.56	-573.78	-1256.34	0.00	
9024.00†	90.000	270.470	7302.00	1384.38	-572.96	-1356.34	0.00	
9124.00†	90.000	270.470	7302.00	1484.20	-572.14	-1456.33	0.00	
9224.00†	90.000	270.470	7302.00	1584.01	-571.32	-1556.33	0.00	
9324.00†	90.000	270.470	7302.00	1683.83	-570.50	-1656.33	0.00	
9424.00†	90.000	270.470	7302.00	1783.65	-569.68	-1756.32	0.00	
9524.00†	90.000	270.470	7302.00	1883.47	-568.86	-1856.32	0.00	
9624.00†	90.000	270.470	7302.00	1983.29	-568.04	-1956.32	0.00	
9724.00†	90.000	270.470	7302.00	2083.10	-567.22	-2056.31	0.00	
9824.00†	90.000	270.470	7302.00	2182.92	-566.40	-2156.31	0.00	
9924.00†	90.000	270.470	7302.00	2282.74	-565.58	-2256.31	0.00	
10024.00†	90.000	270.470	7302.00	2382.56	-564.76	-2356.30	0.00	
10124.00†	90.000	270.470	7302.00	2482.37	-563.94	-2456.30	0.00	
10224.00†	90.000	270.470	7302.00	2582.19	-563.12	-2556.30	0.00	
10324.00†	90.000	270.470	7302.00	2682.01	-562.30	-2656.29	0.00	
10424.00†	90.000	270.470	7302.00	2781.83	-561.48	-2756.29	0.00	
10524.00†	90.000	270.470	7302.00	2881.65	-560.66	-2856.29	0.00	
10624.00†	90.000	270.470	7302.00	2981.46	-559.84	-2956.28	0.00	
10724.00†	90.000	270.470	7302.00	3081.28	-559.02	-3056.28	0.00	
10824.00†	90.000	270.470	7302.00	3181.10	-558.20	-3156.28	0.00	
10924.00†	90.000	270.470	7302.00	3280.92	-557.38	-3256.27	0.00	
11024.00†	90.000	270.470	7302.00	3380.73	-556.56	-3356.27	0.00	
11124.00†	90.000	270.470	7302.00	3480.55	-555.74	-3456.27	0.00	
11224.00†	90.000	270.470	7302.00	3580.37	-554.93	-3556.26	0.00	
11324.00†	90.000	270.470	7302.00	3680.19	-554.11	-3656.26	0.00	
11424.00†	90.000	270.470	7302.00	3780.01	-553.29	-3756.26	0.00	



Planned Wellpath Report

MEAD 11 (REV-A.0) PWP

Page 6 of 8



REFERENCE WELLPATH IDENTIFICATION

Operator	EXTRACTION OIL & GAS	Slot	SLOT#11 MEAD 11(1612'FNL & 405'FEL,SEC.09)
Area	COLORADO	Well	MEAD 11
Field	WELD COUNTY (NAD83/TRUE NORTH)	Wellbore	MEAD 11 PWB
Facility	SEC.09-T07N-R66W		

WELLPATH DATA (180 stations) † = interpolated/extrapolated station

MD [ft]	Inclination [°]	Azimuth [°]	TVD [ft]	Vert Sect [ft]	North [ft]	East [ft]	DLS [°/100ft]	Comments
11524.00†	90.000	270.470	7302.00	3879.82	-552.47	-3856.25	0.00	
11624.00†	90.000	270.470	7302.00	3979.64	-551.65	-3956.25	0.00	
11724.00†	90.000	270.470	7302.00	4079.46	-550.83	-4056.25	0.00	
11824.00†	90.000	270.470	7302.00	4179.28	-550.01	-4156.24	0.00	
11924.00†	90.000	270.470	7302.00	4279.09	-549.19	-4256.24	0.00	
12024.00†	90.000	270.470	7302.00	4378.91	-548.37	-4356.24	0.00	
12124.00†	90.000	270.470	7302.00	4478.73	-547.55	-4456.23	0.00	
12224.00†	90.000	270.470	7302.00	4578.55	-546.73	-4556.23	0.00	
12324.00†	90.000	270.470	7302.00	4678.36	-545.91	-4656.23	0.00	
12424.00†	90.000	270.470	7302.00	4778.18	-545.09	-4756.22	0.00	
12524.00†	90.000	270.470	7302.00	4878.00	-544.27	-4856.22	0.00	
12624.00†	90.000	270.470	7302.00	4977.82	-543.45	-4956.22	0.00	
12724.00†	90.000	270.470	7302.00	5077.64	-542.63	-5056.21	0.00	
12824.00†	90.000	270.470	7302.00	5177.45	-541.81	-5156.21	0.00	
12924.00†	90.000	270.470	7302.00	5277.27	-540.99	-5256.21	0.00	
13024.00†	90.000	270.470	7302.00	5377.09	-540.17	-5356.20	0.00	
13124.00†	90.000	270.470	7302.00	5476.91	-539.35	-5456.20	0.00	
13224.00†	90.000	270.470	7302.00	5576.72	-538.53	-5556.20	0.00	
13324.00†	90.000	270.470	7302.00	5676.54	-537.71	-5656.19	0.00	
13424.00†	90.000	270.470	7302.00	5776.36	-536.89	-5756.19	0.00	
13524.00†	90.000	270.470	7302.00	5876.18	-536.07	-5856.19	0.00	
13624.00†	90.000	270.470	7302.00	5976.00	-535.25	-5956.18	0.00	
13724.00†	90.000	270.470	7302.00	6075.81	-534.44	-6056.18	0.00	
13824.00†	90.000	270.470	7302.00	6175.63	-533.62	-6156.18	0.00	
13924.00†	90.000	270.470	7302.00	6275.45	-532.80	-6256.17	0.00	
14024.00†	90.000	270.470	7302.00	6375.27	-531.98	-6356.17	0.00	
14124.00†	90.000	270.470	7302.00	6475.08	-531.16	-6456.17	0.00	
14224.00†	90.000	270.470	7302.00	6574.90	-530.34	-6556.16	0.00	
14324.00†	90.000	270.470	7302.00	6674.72	-529.52	-6656.16	0.00	
14424.00†	90.000	270.470	7302.00	6774.54	-528.70	-6756.16	0.00	



Planned Wellpath Report

MEAD 11 (REV-A.0) PWP

Page 7 of 8



REFERENCE WELLPATH IDENTIFICATION

Operator	EXTRACTION OIL & GAS	Slot	SLOT#11 MEAD 11(1612'FNL & 405'FEL,SEC.09)
Area	COLORADO	Well	MEAD 11
Field	WELD COUNTY (NAD83/TRUE NORTH)	Wellbore	MEAD 11 PWB
Facility	SEC.09-T07N-R66W		

WELLPATH DATA (180 stations) † = interpolated/extrapolated station

MD [ft]	Inclination [°]	Azimuth [°]	TVD [ft]	Vert Sect [ft]	North [ft]	East [ft]	DLS [°/100ft]	Comments
14524.00†	90.000	270.470	7302.00	6874.35	-527.88	-6856.15	0.00	
14624.00†	90.000	270.470	7302.00	6974.17	-527.06	-6956.15	0.00	
14724.00†	90.000	270.470	7302.00	7073.99	-526.24	-7056.15	0.00	
14824.00†	90.000	270.470	7302.00	7173.81	-525.42	-7156.14	0.00	
14924.00†	90.000	270.470	7302.00	7273.63	-524.60	-7256.14	0.00	
15024.00†	90.000	270.470	7302.00	7373.44	-523.78	-7356.14	0.00	
15124.00†	90.000	270.470	7302.00	7473.26	-522.96	-7456.13	0.00	
15224.00†	90.000	270.470	7302.00	7573.08	-522.14	-7556.13	0.00	
15324.00†	90.000	270.470	7302.00	7672.90	-521.32	-7656.13	0.00	
15424.00†	90.000	270.470	7302.00	7772.71	-520.50	-7756.12	0.00	
15524.00†	90.000	270.470	7302.00	7872.53	-519.68	-7856.12	0.00	
15624.00†	90.000	270.470	7302.00	7972.35	-518.86	-7956.12	0.00	
15724.00†	90.000	270.470	7302.00	8072.17	-518.04	-8056.11	0.00	
15824.00†	90.000	270.470	7302.00	8171.99	-517.22	-8156.11	0.00	
15924.00†	90.000	270.470	7302.00	8271.80	-516.40	-8256.11	0.00	
16024.00†	90.000	270.470	7302.00	8371.62	-515.58	-8356.10	0.00	
16124.00†	90.000	270.470	7302.00	8471.44	-514.77	-8456.10	0.00	
16224.00†	90.000	270.470	7302.00	8571.26	-513.95	-8556.10	0.00	
16324.00†	90.000	270.470	7302.00	8671.07	-513.13	-8656.09	0.00	
16424.00†	90.000	270.470	7302.00	8770.89	-512.31	-8756.09	0.00	
16524.00†	90.000	270.470	7302.00	8870.71	-511.49	-8856.09	0.00	
16624.00†	90.000	270.470	7302.00	8970.53	-510.67	-8956.08	0.00	
16724.00†	90.000	270.470	7302.00	9070.35	-509.85	-9056.08	0.00	
16824.00†	90.000	270.470	7302.00	9170.16	-509.03	-9156.08	0.00	
16924.00†	90.000	270.470	7302.00	9269.98	-508.21	-9256.07	0.00	
17024.00†	90.000	270.470	7302.00	9369.80	-507.39	-9356.07	0.00	
17124.00†	90.000	270.470	7302.00	9469.62	-506.57	-9456.07	0.00	
17224.00†	90.000	270.470	7302.00	9569.43	-505.75	-9556.06	0.00	
17324.00†	90.000	270.470	7302.00	9669.25	-504.93	-9656.06	0.00	
17332.73	90.000	270.470	7302.00 ²	9677.96	-504.86	-9664.78	0.00	End of Tangent



Planned Wellpath Report

MEAD 11 (REV-A.0) PWP

Page 8 of 8



REFERENCE WELLPATH IDENTIFICATION

Operator	EXTRACTION OIL & GAS	Slot	SLOT#11 MEAD 11(1612'FNL & 405'FEL,SEC.09)
Area	COLORADO	Well	MEAD 11
Field	WELD COUNTY (NAD83/TRUE NORTH)	Wellbore	MEAD 11 PWB
Facility	SEC.09-T07N-R66W		

HOLE & CASING SECTIONS - Ref Wellbore: MEAD 11 PWB Ref Wellpath: MEAD 11 (REV-A.0) PWP

String/Diameter	Start MD [ft]	End MD [ft]	Interval [ft]	Start TVD [ft]	End TVD [ft]	Start N/S [ft]	Start E/W [ft]	End N/S [ft]	End E/W [ft]
7in Casing Intermediate	24.00	7722.04	7698.04	24.00	7302.00	0.00	0.00	-583.63	-54.42

TARGETS

Name	MD [ft]	TVD [ft]	North [ft]	East [ft]	Grid East [US ft]	Grid North [US ft]	Latitude	Longitude	Shape
MEAD PAD SECTION 08		0.00	260.15	1.96	3201342.85	1459836.85	40°35'36.208"N	104°46'29.986"W	polygon
MEAD PAD SECTION 09		0.00	260.15	1.96	3201342.85	1459836.85	40°35'36.208"N	104°46'29.986"W	polygon
2) MEAD 11 BHL ON PLAT REV-1(1884'FNL & 460'FWL,SEC.08)	17332.73	7302.00	-504.86	-9664.78	3191682.95	1458992.86	40°35'28.630"N	104°48'35.287"W	point
1) MEAD 11 LANDING	7722.04	7302.00	-583.63	-54.42	3201293.38	1458992.66	40°35'27.870"N	104°46'30.716"W	point
MEAD PAD CENTER HARDLINES		7505.00	260.15	1.96	3201342.85	1459836.85	40°35'36.208"N	104°46'29.986"W	polygon

SURVEY PROGRAM - Ref Wellbore: MEAD 11 PWB Ref Wellpath: MEAD 11 (REV-A.0) PWP

Start MD [ft]	End MD [ft]	Positional Uncertainty Model	Log Name/Comment	Wellbore
24.00	18000.00	NaviTrak (Standard)		MEAD 11 PWB