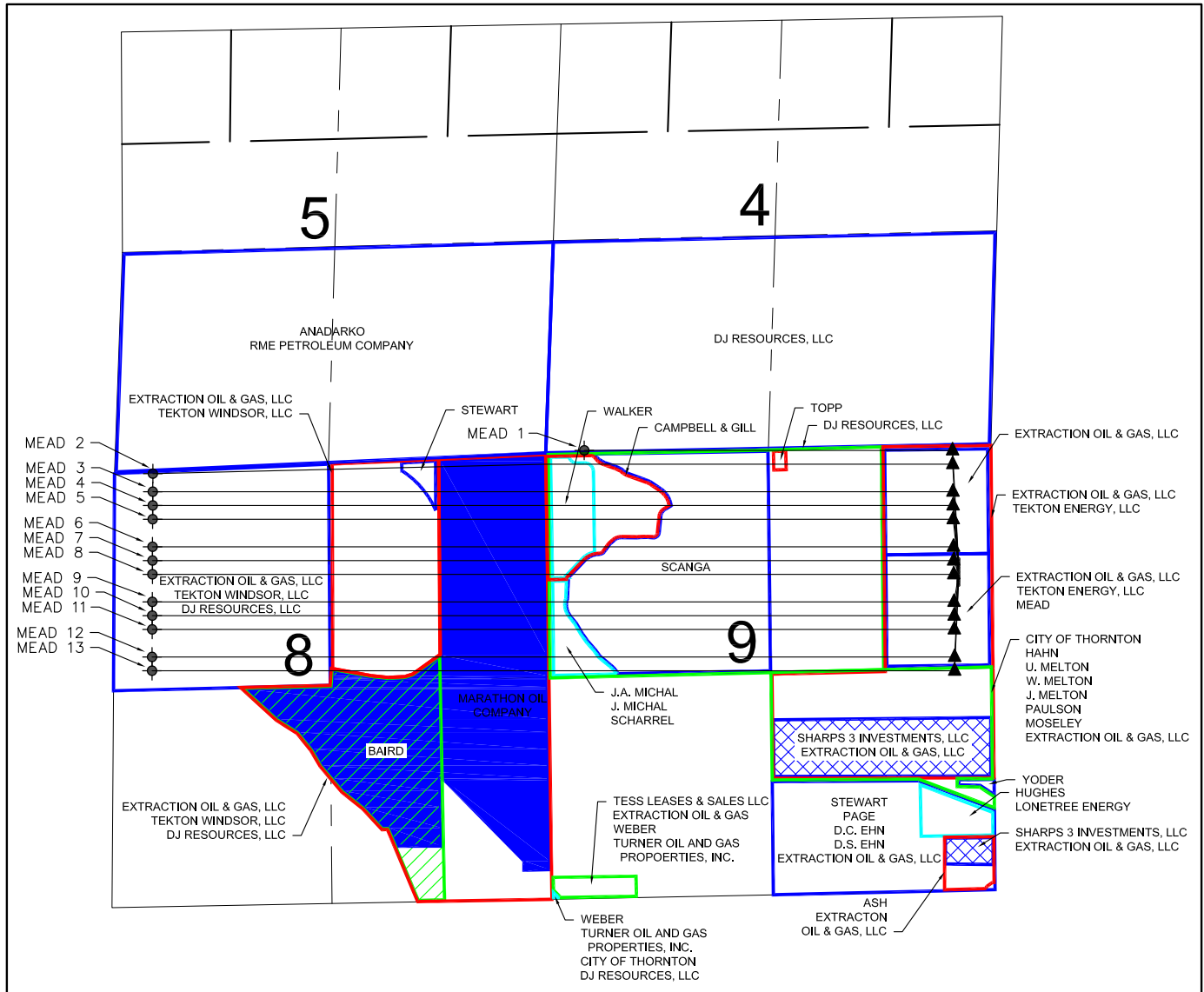


LEASE DRAWING: MEAD 9-E



LEGEND

- ⊕ = EXISTING MONUMENT
- = PROPOSED WELL
- ⬮ = BOTTOM HOLE
- ◆ = EXISTING WELL
- ▲ = LANDING POINT
- = LEASE LINES

NOTES:

MEAD 1 TO BE AT 1352' FNL, 402' FEL.
 BOTTOM HOLE AT 40' FSL & 460' FWL, SEC. 4
 MEAD 2 TO BE AT 1378' FNL, 403' FEL.
 BOTTOM HOLE AT 20' FNL & 460' FWL, SEC. 8
 MEAD 3 TO BE AT 1404' FNL, 403' FEL.
 BOTTOM HOLE AT 236' FNL & 460' FWL, SEC. 8
 MEAD 4 TO BE AT 1430' FNL, 403' FEL.
 BOTTOM HOLE AT 401' FNL & 460' FWL, SEC. 8
 MEAD 5 TO BE AT 1456' FNL, 403' FEL.
 BOTTOM HOLE AT 566' FNL & 460' FWL, SEC. 8
 MEAD 6 TO BE AT 1482' FNL, 404' FEL.
 BOTTOM HOLE AT 895' FNL & 460' FWL, SEC. 8
 MEAD 7 TO BE AT 1508' FNL, 404' FEL.
 BOTTOM HOLE AT 1060' FNL & 460' FWL, SEC. 8

MEAD 8 TO BE AT 1534' FNL, 404' FEL.
 BOTTOM HOLE AT 1225' FNL & 460' FWL, SEC. 8
 MEAD 9 TO BE AT 1560' FNL, 404' FEL.
 BOTTOM HOLE AT 1555' FNL & 460' FWL, SEC. 8
 MEAD 10 TO BE AT 1586' FNL, 405' FEL.
 BOTTOM HOLE AT 1719' FNL & 460' FWL, SEC. 8
 MEAD 11 TO BE AT 1612' FNL, 405' FEL.
 BOTTOM HOLE AT 1884' FNL & 460' FWL, SEC. 8
 MEAD 12 TO BE AT 1638' FNL, 405' FEL.
 BOTTOM HOLE AT 2214' FNL & 460' FWL, SEC. 8
 MEAD 13 TO BE AT 1664' FNL, 405' FEL.
 BOTTOM HOLE AT 2379' FNL & 460' FWL, SEC. 8

PREPARED BY:



EXTRACTION OIL & GAS

FIELD DATE: 05-23-14	PAD NAME: MEAD 9-E
DRAWING DATE: 08-04-14	SURFACE LOCATION: SE 1/4 NE 1/4, SEC. 9, T7N, R66W, 6TH P.M.
BY: MLP	WELD COUNTY, COLORADO

