

EXTRACTION OIL & GAS

Location: COLORADO Slot: SLOT#10 MEAD 10(1586'FNL & 405'FEL,SEC.09)
Field: WELD COUNTY (NAD83/TRUE NORTH) Well: MEAD 10
Facility: SEC.09-T07N-R66W Wellbore: MEAD 10 PWB

Plot reference wellpath is MEAD 10 (REV-A.0) PWP

True vertical depths are referenced to RIG (RKB)	Grid System: NAD83 / Lambert Colorado SP, Northern Zone (501), US feet
Measured depths are referenced to RIG (RKB)	North Reference: True north
RIG (RKB) to Mean Sea Level: 4991 feet	Scale: True distance
Mean Sea Level to Mud line (At Slot: SLOT#10 MEAD 10(1586'FNL & 405'FEL,SEC.09)): 0 feet	Depths are in feet
Coordinates are in feet referenced to Slot	Created by: painset on 6/13/2014

Location Information

Facility Name				Grid East (US ft)	Grid North (US ft)	Latitude	Longitude
SEC.09-T07N-R66W				3201342.822	1459836.887	40°35'36.208"N	104°46'29.986"W
Slot	Local N (ft)	Local E (ft)		Grid East (US ft)	Grid North (US ft)	Latitude	Longitude
SLOT#10 MEAD 10(1586'FNL & 405'FEL,SEC.09)	-234.28	-1.93		3201342.809	1459602.605	40°35'33.893"N	104°46'30.011"W
RIG (RKB) to Mud line (At Slot: SLOT#10 MEAD 10(1586'FNL & 405'FEL,SEC.09))						4991ft	
Mean Sea Level to Mud line (At Slot: SLOT#10 MEAD 10(1586'FNL & 405'FEL,SEC.09))						0ft	
RIG (RKB) to Mean Sea Level						4991ft	

Targets

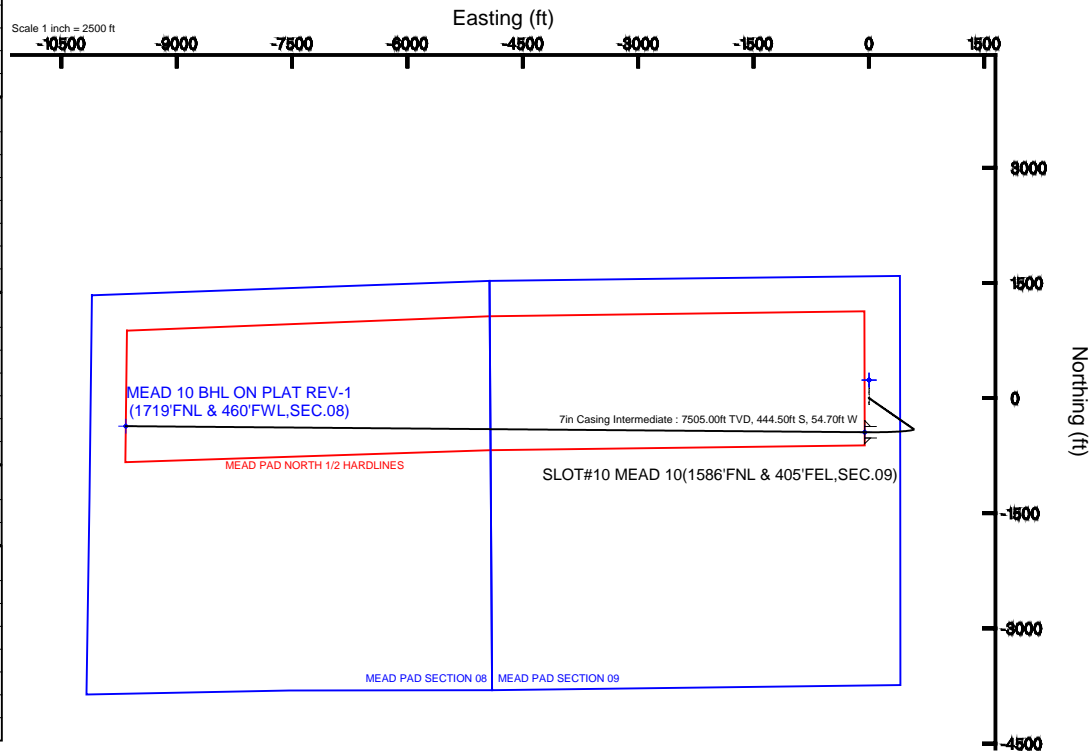
Name	MD (ft)	TVD (ft)	Local N (ft)	Local E (ft)	Grid East (US ft)	Grid North (US ft)	Latitude	Longitude
MEAD PAD SECTION 08		0.00	234.24	1.96	3201342.85	1459836.85	40°35'36.208"N	104°46'29.986"W
MEAD PAD SECTION 09		0.00	234.24	1.96	3201342.85	1459836.85	40°35'36.208"N	104°46'29.986"W
MEAD 10 BHL ON PLAT REV-1(1719'FNL & 460'FWL,SEC.08)	17520.53	7505.00	-365.73	-9662.77	3191683.61	1459157.90	40°35'30.260"N	104°48'35.262"W
MEAD 10 LANDING	7912.14	7505.00	-444.50	-54.70	3201291.75	1459157.69	40°35'29.501"N	104°46'30.720"W
MEAD PAD NORTH 1/2 HARDLINES		7505.00	234.24	1.96	3201342.85	1459836.85	40°35'36.208"N	104°46'29.986"W

Survey Program

Start MD (ft)	End MD (ft)	Tool	Model	Log Name/Comment	Wellbore
24.00	18000.00	NaviTrak	NaviTrak (Standard)		MEAD 10 PWB

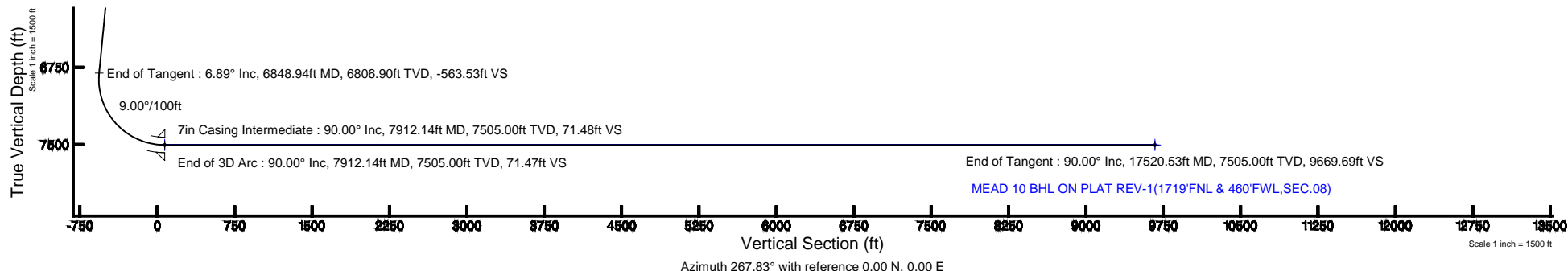
Well Profile Data

Design Comment	MD (ft)	Inc (°)	Az (°)	TVD (ft)	Local N (ft)	Local E (ft)	DLS (°/100ft)	VS (ft)
Tie On	24.00	0.000	124.775	24.00	0.00	0.00	0.00	0.00
End of Tangent	800.00	0.000	124.775	800.00	0.00	0.00	0.00	0.00
End of Build	1144.54	6.891	124.775	1143.71	-11.80	17.00	2.00	-16.54
End of Tangent	6848.94	6.891	124.775	6806.90	-402.14	579.16	0.00	-563.53
End of 3D Arc	7912.14	90.000	270.470	7505.00	-444.50	-54.70	9.00	71.47
End of Tangent	17520.53	90.000	270.470	7505.00	-365.73	-9662.77	0.00	9669.69



BGGM (1945.0 to 2016.0) Dip: 67.10° Field: 52862.2 nT
Magnetic North is 8.56 degrees East of True North (at 6/12/2014)

To correct azimuth from Magnetic to True add 8.56 degrees





Planned Wellpath Report

MEAD 10 (REV-A.0) PWP

Page 1 of 8



REFERENCE WELLPATH IDENTIFICATION

Operator	EXTRACTION OIL & GAS	Slot	SLOT#10 MEAD 10(1586'FNL & 405'FEL,SEC.09)
Area	COLORADO	Well	MEAD 10
Field	WELD COUNTY (NAD83/TRUE NORTH)	Wellbore	MEAD 10 PWB
Facility	SEC.09-T07N-R66W		

REPORT SETUP INFORMATION

Projection System	NAD83 / Lambert Colorado SP, Northern Zone (501), US feet	Software System	WellArchitect® 4.0.0
North Reference	True	User	Painsetr
Scale	0.999975	Report Generated	6/13/2014 at 12:03:24 PM
Convergence at slot	n/a	Database/Source file	WA_Denver/MEAD_10_PWB.xml

WELLPATH LOCATION

	Local coordinates		Grid coordinates		Geographic coordinates	
	North[ft]	East[ft]	Easting[US ft]	Northing[US ft]	Latitude	Longitude
Slot Location	-234.28	-1.93	3201342.81	1459602.61	40°35'33.893"N	104°46'30.011"W
Facility Reference Pt			3201342.82	1459836.89	40°35'36.208"N	104°46'29.986"W
Field Reference Pt			3185481.27	1419166.81	40°28'55.560"N	104°49'59.556"W

WELLPATH DATUM

Calculation method	Minimum curvature	RIG (RKB) to Facility Vertical Datum	4991.00ft
Horizontal Reference Pt	Slot	RIG (RKB) to Mean Sea Level	4991.00ft
Vertical Reference Pt	RIG (RKB)	RIG (RKB) to Mud Line at Slot (SLOT#10 MEAD 10(1586'FNL & 405'FEL,SEC.09))	4991.00ft
MD Reference Pt	RIG (RKB)	Section Origin	N 0.00, E 0.00 ft
Field Vertical Reference	Mean Sea Level	Section Azimuth	267.83°



Planned Wellpath Report

MEAD 10 (REV-A.0) PWP

Page 2 of 8



REFERENCE WELLPATH IDENTIFICATION

Operator	EXTRACTION OIL & GAS	Slot	SLOT#10 MEAD 10(1586'FNL & 405'FEL,SEC.09)
Area	COLORADO	Well	MEAD 10
Field	WELD COUNTY (NAD83/TRUE NORTH)	Wellbore	MEAD 10 PWB
Facility	SEC.09-T07N-R66W		

WELLPATH DATA (181 stations) † = interpolated/extrapolated station

MD [ft]	Inclination [°]	Azimuth [°]	TVD [ft]	Vert Sect [ft]	North [ft]	East [ft]	DLS [°/100ft]	Comments
0.00†	0.000	124.775	0.00	0.00	0.00	0.00	0.00	
24.00	0.000	124.775	24.00	0.00	0.00	0.00	0.00	Tie On
124.00†	0.000	124.775	124.00	0.00	0.00	0.00	0.00	
224.00†	0.000	124.775	224.00	0.00	0.00	0.00	0.00	
324.00†	0.000	124.775	324.00	0.00	0.00	0.00	0.00	
424.00†	0.000	124.775	424.00	0.00	0.00	0.00	0.00	
524.00†	0.000	124.775	524.00	0.00	0.00	0.00	0.00	
624.00†	0.000	124.775	624.00	0.00	0.00	0.00	0.00	
724.00†	0.000	124.775	724.00	0.00	0.00	0.00	0.00	
800.00	0.000	124.775	800.00	0.00	0.00	0.00	0.00	End of Tangent
824.00†	0.480	124.775	824.00	-0.08	-0.06	0.08	2.00	
924.00†	2.480	124.775	923.96	-2.14	-1.53	2.20	2.00	
1024.00†	4.480	124.775	1023.77	-7.00	-4.99	7.19	2.00	
1124.00†	6.480	124.775	1123.31	-14.63	-10.44	15.03	2.00	
1144.54	6.891	124.775	1143.71	-16.54	-11.80	17.00	2.00	End of Build
1224.00†	6.891	124.775	1222.60	-24.16	-17.24	24.83	0.00	
1324.00†	6.891	124.775	1321.87	-33.75	-24.08	34.68	0.00	
1424.00†	6.891	124.775	1421.15	-43.34	-30.93	44.54	0.00	
1524.00†	6.891	124.775	1520.43	-52.93	-37.77	54.39	0.00	
1624.00†	6.891	124.775	1619.71	-62.51	-44.61	64.25	0.00	
1724.00†	6.891	124.775	1718.98	-72.10	-51.45	74.10	0.00	
1824.00†	6.891	124.775	1818.26	-81.69	-58.30	83.96	0.00	
1924.00†	6.891	124.775	1917.54	-91.28	-65.14	93.81	0.00	
2024.00†	6.891	124.775	2016.82	-100.87	-71.98	103.67	0.00	
2124.00†	6.891	124.775	2116.10	-110.46	-78.83	113.52	0.00	
2224.00†	6.891	124.775	2215.37	-120.05	-85.67	123.38	0.00	
2324.00†	6.891	124.775	2314.65	-129.64	-92.51	133.23	0.00	
2424.00†	6.891	124.775	2413.93	-139.23	-99.35	143.09	0.00	
2524.00†	6.891	124.775	2513.21	-148.82	-106.20	152.94	0.00	
2624.00†	6.891	124.775	2612.48	-158.40	-113.04	162.80	0.00	



Planned Wellpath Report

MEAD 10 (REV-A.0) PWP

Page 3 of 8



REFERENCE WELLPATH IDENTIFICATION

Operator	EXTRACTION OIL & GAS	Slot	SLOT#10 MEAD 10(1586'FNL & 405'FEL,SEC.09)
Area	COLORADO	Well	MEAD 10
Field	WELD COUNTY (NAD83/TRUE NORTH)	Wellbore	MEAD 10 PWB
Facility	SEC.09-T07N-R66W		

WELLPATH DATA (181 stations) † = interpolated/extrapolated station

MD [ft]	Inclination [°]	Azimuth [°]	TVD [ft]	Vert Sect [ft]	North [ft]	East [ft]	DLS [°/100ft]	Comments
2724.00†	6.891	124.775	2711.76	-167.99	-119.88	172.65	0.00	
2824.00†	6.891	124.775	2811.04	-177.58	-126.72	182.51	0.00	
2924.00†	6.891	124.775	2910.32	-187.17	-133.57	192.36	0.00	
3024.00†	6.891	124.775	3009.59	-196.76	-140.41	202.22	0.00	
3124.00†	6.891	124.775	3108.87	-206.35	-147.25	212.07	0.00	
3224.00†	6.891	124.775	3208.15	-215.94	-154.10	221.92	0.00	
3324.00†	6.891	124.775	3307.43	-225.53	-160.94	231.78	0.00	
3424.00†	6.891	124.775	3406.71	-235.12	-167.78	241.63	0.00	
3524.00†	6.891	124.775	3505.98	-244.70	-174.62	251.49	0.00	
3624.00†	6.891	124.775	3605.26	-254.29	-181.47	261.34	0.00	
3724.00†	6.891	124.775	3704.54	-263.88	-188.31	271.20	0.00	
3824.00†	6.891	124.775	3803.82	-273.47	-195.15	281.05	0.00	
3924.00†	6.891	124.775	3903.09	-283.06	-202.00	290.91	0.00	
4024.00†	6.891	124.775	4002.37	-292.65	-208.84	300.76	0.00	
4124.00†	6.891	124.775	4101.65	-302.24	-215.68	310.62	0.00	
4224.00†	6.891	124.775	4200.93	-311.83	-222.52	320.47	0.00	
4324.00†	6.891	124.775	4300.20	-321.42	-229.37	330.33	0.00	
4424.00†	6.891	124.775	4399.48	-331.01	-236.21	340.18	0.00	
4524.00†	6.891	124.775	4498.76	-340.59	-243.05	350.04	0.00	
4624.00†	6.891	124.775	4598.04	-350.18	-249.90	359.89	0.00	
4724.00†	6.891	124.775	4697.31	-359.77	-256.74	369.75	0.00	
4824.00†	6.891	124.775	4796.59	-369.36	-263.58	379.60	0.00	
4924.00†	6.891	124.775	4895.87	-378.95	-270.42	389.46	0.00	
5024.00†	6.891	124.775	4995.15	-388.54	-277.27	399.31	0.00	
5124.00†	6.891	124.775	5094.43	-398.13	-284.11	409.17	0.00	
5224.00†	6.891	124.775	5193.70	-407.72	-290.95	419.02	0.00	
5324.00†	6.891	124.775	5292.98	-417.31	-297.79	428.88	0.00	
5424.00†	6.891	124.775	5392.26	-426.90	-304.64	438.73	0.00	
5524.00†	6.891	124.775	5491.54	-436.48	-311.48	448.59	0.00	
5624.00†	6.891	124.775	5590.81	-446.07	-318.32	458.44	0.00	



Planned Wellpath Report

MEAD 10 (REV-A.0) PWP

Page 4 of 8



REFERENCE WELLPATH IDENTIFICATION

Operator	EXTRACTION OIL & GAS	Slot	SLOT#10 MEAD 10(1586'FNL & 405'FEL,SEC.09)
Area	COLORADO	Well	MEAD 10
Field	WELD COUNTY (NAD83/TRUE NORTH)	Wellbore	MEAD 10 PWB
Facility	SEC.09-T07N-R66W		

WELLPATH DATA (181 stations) † = interpolated/extrapolated station

MD [ft]	Inclination [°]	Azimuth [°]	TVD [ft]	Vert Sect [ft]	North [ft]	East [ft]	DLS [°/100ft]	Comments
5724.00†	6.891	124.775	5690.09	-455.66	-325.17	468.30	0.00	
5824.00†	6.891	124.775	5789.37	-465.25	-332.01	478.15	0.00	
5924.00†	6.891	124.775	5888.65	-474.84	-338.85	488.01	0.00	
6024.00†	6.891	124.775	5987.92	-484.43	-345.69	497.86	0.00	
6124.00†	6.891	124.775	6087.20	-494.02	-352.54	507.72	0.00	
6224.00†	6.891	124.775	6186.48	-503.61	-359.38	517.57	0.00	
6324.00†	6.891	124.775	6285.76	-513.20	-366.22	527.42	0.00	
6424.00†	6.891	124.775	6385.04	-522.78	-373.07	537.28	0.00	
6524.00†	6.891	124.775	6484.31	-532.37	-379.91	547.13	0.00	
6624.00†	6.891	124.775	6583.59	-541.96	-386.75	556.99	0.00	
6724.00†	6.891	124.775	6682.87	-551.55	-393.59	566.84	0.00	
6824.00†	6.891	124.775	6782.15	-561.14	-400.44	576.70	0.00	
6848.94	6.891	124.775	6806.90	-563.53	-402.14	579.16	0.00	End of Tangent
6924.00†	4.040	195.809	6881.69	-566.32	-407.26	582.14	9.00	
7024.00†	10.788	249.527	6980.88	-556.33	-413.94	572.39	9.00	
7124.00†	19.447	259.348	7077.35	-530.92	-420.30	547.21	9.00	
7224.00†	28.315	263.207	7168.70	-490.74	-426.20	507.22	9.00	
7324.00†	37.243	265.330	7252.69	-436.76	-431.48	453.40	9.00	
7424.00†	46.195	266.724	7327.26	-370.31	-436.01	387.08	9.00	
7524.00†	55.160	267.752	7390.57	-293.03	-439.69	309.89	9.00	
7624.00†	64.132	268.577	7441.05	-206.83	-442.42	223.73	9.00	
7724.00†	73.108	269.285	7477.47	-113.83	-444.14	130.72	9.00	
7824.00†	82.086	269.927	7498.92	-16.31	-444.80	33.16	9.00	
7912.14	90.000	270.470	7505.00 [†]	71.47	-444.50	-54.70	9.00	End of 3D Arc
7924.00†	90.000	270.470	7505.00	83.32	-444.40	-66.56	0.00	
8024.00†	90.000	270.470	7505.00	183.22	-443.58	-166.56	0.00	
8124.00†	90.000	270.470	7505.00	283.11	-442.76	-266.56	0.00	
8224.00†	90.000	270.470	7505.00	383.00	-441.94	-366.55	0.00	
8324.00†	90.000	270.470	7505.00	482.90	-441.12	-466.55	0.00	
8424.00†	90.000	270.470	7505.00	582.79	-440.30	-566.55	0.00	



Planned Wellpath Report

MEAD 10 (REV-A.0) PWP

Page 5 of 8



REFERENCE WELLPATH IDENTIFICATION

Operator	EXTRACTION OIL & GAS	Slot	SLOT#10 MEAD 10(1586'FNL & 405'FEL,SEC.09)
Area	COLORADO	Well	MEAD 10
Field	WELD COUNTY (NAD83/TRUE NORTH)	Wellbore	MEAD 10 PWB
Facility	SEC.09-T07N-R66W		

WELLPATH DATA (181 stations) † = interpolated/extrapolated station

MD [ft]	Inclination [°]	Azimuth [°]	TVD [ft]	Vert Sect [ft]	North [ft]	East [ft]	DLS [°/100ft]	Comments
8524.00†	90.000	270.470	7505.00	682.69	-439.48	-666.54	0.00	
8624.00†	90.000	270.470	7505.00	782.58	-438.66	-766.54	0.00	
8724.00†	90.000	270.470	7505.00	882.48	-437.84	-866.54	0.00	
8824.00†	90.000	270.470	7505.00	982.37	-437.02	-966.53	0.00	
8924.00†	90.000	270.470	7505.00	1082.26	-436.20	-1066.53	0.00	
9024.00†	90.000	270.470	7505.00	1182.16	-435.38	-1166.53	0.00	
9124.00†	90.000	270.470	7505.00	1282.05	-434.56	-1266.52	0.00	
9224.00†	90.000	270.470	7505.00	1381.95	-433.74	-1366.52	0.00	
9324.00†	90.000	270.470	7505.00	1481.84	-432.92	-1466.52	0.00	
9424.00†	90.000	270.470	7505.00	1581.73	-432.10	-1566.51	0.00	
9524.00†	90.000	270.470	7505.00	1681.63	-431.28	-1666.51	0.00	
9624.00†	90.000	270.470	7505.00	1781.52	-430.46	-1766.50	0.00	
9724.00†	90.000	270.470	7505.00	1881.42	-429.64	-1866.50	0.00	
9824.00†	90.000	270.470	7505.00	1981.31	-428.82	-1966.50	0.00	
9924.00†	90.000	270.470	7505.00	2081.20	-428.00	-2066.49	0.00	
10024.00†	90.000	270.470	7505.00	2181.10	-427.18	-2166.49	0.00	
10124.00†	90.000	270.470	7505.00	2280.99	-426.36	-2266.49	0.00	
10224.00†	90.000	270.470	7505.00	2380.89	-425.54	-2366.48	0.00	
10324.00†	90.000	270.470	7505.00	2480.78	-424.72	-2466.48	0.00	
10424.00†	90.000	270.470	7505.00	2580.67	-423.90	-2566.48	0.00	
10524.00†	90.000	270.470	7505.00	2680.57	-423.08	-2666.47	0.00	
10624.00†	90.000	270.470	7505.00	2780.46	-422.26	-2766.47	0.00	
10724.00†	90.000	270.470	7505.00	2880.36	-421.44	-2866.47	0.00	
10824.00†	90.000	270.470	7505.00	2980.25	-420.62	-2966.46	0.00	
10924.00†	90.000	270.470	7505.00	3080.15	-419.81	-3066.46	0.00	
11024.00†	90.000	270.470	7505.00	3180.04	-418.99	-3166.46	0.00	
11124.00†	90.000	270.470	7505.00	3279.93	-418.17	-3266.45	0.00	
11224.00†	90.000	270.470	7505.00	3379.83	-417.35	-3366.45	0.00	
11324.00†	90.000	270.470	7505.00	3479.72	-416.53	-3466.45	0.00	
11424.00†	90.000	270.470	7505.00	3579.62	-415.71	-3566.44	0.00	



Planned Wellpath Report

MEAD 10 (REV-A.0) PWP

Page 6 of 8



REFERENCE WELLPATH IDENTIFICATION

Operator	EXTRACTION OIL & GAS	Slot	SLOT#10 MEAD 10(1586'FNL & 405'FEL,SEC.09)
Area	COLORADO	Well	MEAD 10
Field	WELD COUNTY (NAD83/TRUE NORTH)	Wellbore	MEAD 10 PWB
Facility	SEC.09-T07N-R66W		

WELLPATH DATA (181 stations) † = interpolated/extrapolated station

MD [ft]	Inclination [°]	Azimuth [°]	TVD [ft]	Vert Sect [ft]	North [ft]	East [ft]	DLS [°/100ft]	Comments
11524.00†	90.000	270.470	7505.00	3679.51	-414.89	-3666.44	0.00	
11624.00†	90.000	270.470	7505.00	3779.40	-414.07	-3766.44	0.00	
11724.00†	90.000	270.470	7505.00	3879.30	-413.25	-3866.43	0.00	
11824.00†	90.000	270.470	7505.00	3979.19	-412.43	-3966.43	0.00	
11924.00†	90.000	270.470	7505.00	4079.09	-411.61	-4066.43	0.00	
12024.00†	90.000	270.470	7505.00	4178.98	-410.79	-4166.42	0.00	
12124.00†	90.000	270.470	7505.00	4278.87	-409.97	-4266.42	0.00	
12224.00†	90.000	270.470	7505.00	4378.77	-409.15	-4366.42	0.00	
12324.00†	90.000	270.470	7505.00	4478.66	-408.33	-4466.41	0.00	
12424.00†	90.000	270.470	7505.00	4578.56	-407.51	-4566.41	0.00	
12524.00†	90.000	270.470	7505.00	4678.45	-406.69	-4666.41	0.00	
12624.00†	90.000	270.470	7505.00	4778.34	-405.87	-4766.40	0.00	
12724.00†	90.000	270.470	7505.00	4878.24	-405.05	-4866.40	0.00	
12824.00†	90.000	270.470	7505.00	4978.13	-404.23	-4966.40	0.00	
12924.00†	90.000	270.470	7505.00	5078.03	-403.41	-5066.39	0.00	
13024.00†	90.000	270.470	7505.00	5177.92	-402.59	-5166.39	0.00	
13124.00†	90.000	270.470	7505.00	5277.81	-401.77	-5266.39	0.00	
13224.00†	90.000	270.470	7505.00	5377.71	-400.95	-5366.38	0.00	
13324.00†	90.000	270.470	7505.00	5477.60	-400.13	-5466.38	0.00	
13424.00†	90.000	270.470	7505.00	5577.50	-399.31	-5566.38	0.00	
13524.00†	90.000	270.470	7505.00	5677.39	-398.49	-5666.37	0.00	
13624.00†	90.000	270.470	7505.00	5777.29	-397.67	-5766.37	0.00	
13724.00†	90.000	270.470	7505.00	5877.18	-396.85	-5866.37	0.00	
13824.00†	90.000	270.470	7505.00	5977.07	-396.03	-5966.36	0.00	
13924.00†	90.000	270.470	7505.00	6076.97	-395.21	-6066.36	0.00	
14024.00†	90.000	270.470	7505.00	6176.86	-394.39	-6166.36	0.00	
14124.00†	90.000	270.470	7505.00	6276.76	-393.57	-6266.35	0.00	
14224.00†	90.000	270.470	7505.00	6376.65	-392.75	-6366.35	0.00	
14324.00†	90.000	270.470	7505.00	6476.54	-391.93	-6466.35	0.00	
14424.00†	90.000	270.470	7505.00	6576.44	-391.11	-6566.34	0.00	



Planned Wellpath Report

MEAD 10 (REV-A.0) PWP

Page 7 of 8



REFERENCE WELLPATH IDENTIFICATION

Operator	EXTRACTION OIL & GAS	Slot	SLOT#10 MEAD 10(1586'FNL & 405'FEL,SEC.09)
Area	COLORADO	Well	MEAD 10
Field	WELD COUNTY (NAD83/TRUE NORTH)	Wellbore	MEAD 10 PWB
Facility	SEC.09-T07N-R66W		

WELLPATH DATA (181 stations) † = interpolated/extrapolated station

MD [ft]	Inclination [°]	Azimuth [°]	TVD [ft]	Vert Sect [ft]	North [ft]	East [ft]	DLS [°/100ft]	Comments
14524.00†	90.000	270.470	7505.00	6676.33	-390.29	-6666.34	0.00	
14624.00†	90.000	270.470	7505.00	6776.23	-389.47	-6766.34	0.00	
14724.00†	90.000	270.470	7505.00	6876.12	-388.65	-6866.33	0.00	
14824.00†	90.000	270.470	7505.00	6976.01	-387.83	-6966.33	0.00	
14924.00†	90.000	270.470	7505.00	7075.91	-387.01	-7066.33	0.00	
15024.00†	90.000	270.470	7505.00	7175.80	-386.19	-7166.32	0.00	
15124.00†	90.000	270.470	7505.00	7275.70	-385.37	-7266.32	0.00	
15224.00†	90.000	270.470	7505.00	7375.59	-384.55	-7366.32	0.00	
15324.00†	90.000	270.470	7505.00	7475.48	-383.73	-7466.31	0.00	
15424.00†	90.000	270.470	7505.00	7575.38	-382.91	-7566.31	0.00	
15524.00†	90.000	270.470	7505.00	7675.27	-382.10	-7666.31	0.00	
15624.00†	90.000	270.470	7505.00	7775.17	-381.28	-7766.30	0.00	
15724.00†	90.000	270.470	7505.00	7875.06	-380.46	-7866.30	0.00	
15824.00†	90.000	270.470	7505.00	7974.96	-379.64	-7966.30	0.00	
15924.00†	90.000	270.470	7505.00	8074.85	-378.82	-8066.29	0.00	
16024.00†	90.000	270.470	7505.00	8174.74	-378.00	-8166.29	0.00	
16124.00†	90.000	270.470	7505.00	8274.64	-377.18	-8266.29	0.00	
16224.00†	90.000	270.470	7505.00	8374.53	-376.36	-8366.28	0.00	
16324.00†	90.000	270.470	7505.00	8474.43	-375.54	-8466.28	0.00	
16424.00†	90.000	270.470	7505.00	8574.32	-374.72	-8566.28	0.00	
16524.00†	90.000	270.470	7505.00	8674.21	-373.90	-8666.27	0.00	
16624.00†	90.000	270.470	7505.00	8774.11	-373.08	-8766.27	0.00	
16724.00†	90.000	270.470	7505.00	8874.00	-372.26	-8866.27	0.00	
16824.00†	90.000	270.470	7505.00	8973.90	-371.44	-8966.26	0.00	
16924.00†	90.000	270.470	7505.00	9073.79	-370.62	-9066.26	0.00	
17024.00†	90.000	270.470	7505.00	9173.68	-369.80	-9166.26	0.00	
17124.00†	90.000	270.470	7505.00	9273.58	-368.98	-9266.25	0.00	
17224.00†	90.000	270.470	7505.00	9373.47	-368.16	-9366.25	0.00	
17324.00†	90.000	270.470	7505.00	9473.37	-367.34	-9466.25	0.00	
17424.00†	90.000	270.470	7505.00	9573.26	-366.52	-9566.24	0.00	



Planned Wellpath Report

MEAD 10 (REV-A.0) PWP

Page 8 of 8



REFERENCE WELLPATH IDENTIFICATION

Operator	EXTRACTION OIL & GAS	Slot	SLOT#10 MEAD 10(1586'FNL & 405'FEL,SEC.09)
Area	COLORADO	Well	MEAD 10
Field	WELD COUNTY (NAD83/TRUE NORTH)	Wellbore	MEAD 10 PWB
Facility	SEC.09-T07N-R66W		

WELLPATH DATA (181 stations)

MD [ft]	Inclination [°]	Azimuth [°]	TVD [ft]	Vert Sect [ft]	North [ft]	East [ft]	DLS [°/100ft]	Comments
17520.53	90.000	270.470	7505.00 ²	9669.69	-365.73	-9662.77	0.00	End of Tangent

HOLE & CASING SECTIONS - Ref Wellbore: MEAD 10 PWB Ref Wellpath: MEAD 10 (REV-A.0) PWP

String/Diameter	Start MD [ft]	End MD [ft]	Interval [ft]	Start TVD [ft]	End TVD [ft]	Start N/S [ft]	Start E/W [ft]	End N/S [ft]	End E/W [ft]
7in Casing Intermediate	24.00	7912.14	7888.14	24.00	7505.00	0.00	0.00	-444.50	-54.70

TARGETS

Name	MD [ft]	TVD [ft]	North [ft]	East [ft]	Grid East [US ft]	Grid North [US ft]	Latitude	Longitude	Shape
MEAD PAD SECTION 08		0.00	234.24	1.96	3201342.85	1459836.85	40°35'36.208"N	104°46'29.986"W	polygon
MEAD PAD SECTION 09		0.00	234.24	1.96	3201342.85	1459836.85	40°35'36.208"N	104°46'29.986"W	polygon
2) MEAD 10 BHL ON PLAT REV-1(1719'FNL & 460'FWL,SEC.08)	17520.53	7505.00	-365.73	-9662.77	3191683.61	1459157.90	40°35'30.260"N	104°48'35.262"W	point
1) MEAD 10 LANDING	7912.14	7505.00	-444.50	-54.70	3201291.75	1459157.69	40°35'29.501"N	104°46'30.720"W	point
MEAD PAD NORTH 1/2 HARDLINES		7505.00	234.24	1.96	3201342.85	1459836.85	40°35'36.208"N	104°46'29.986"W	polygon

SURVEY PROGRAM - Ref Wellbore: MEAD 10 PWB Ref Wellpath: MEAD 10 (REV-A.0) PWP

Start MD [ft]	End MD [ft]	Positional Uncertainty Model	Log Name/Comment	Wellbore
24.00	18000.00	NaviTrak (Standard)		MEAD 10 PWB