

Location:	COLORADO	Slot:	SLOT#06 MEAD 6(1482'FNL & 404'FEL,SEC.09)
Field:	WELD COUNTY (NAD83/TRUE NORTH)	Well:	MEAD 6
Facility:	SEC.09-T07N-R66W	Wellbore:	MEAD 6 PWB

Location:	COLORADO	Slot:	SLOT#06 MEAD 6(1482'FNL & 404'FEL,SEC.09)
Field:	WELD COUNTY (NAD83/TRUE NORTH)	Well:	MEAD 6
Facility:	SEC.09-T07N-R66W	Wellbore:	MEAD 6 PWB

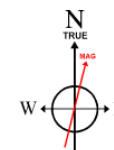
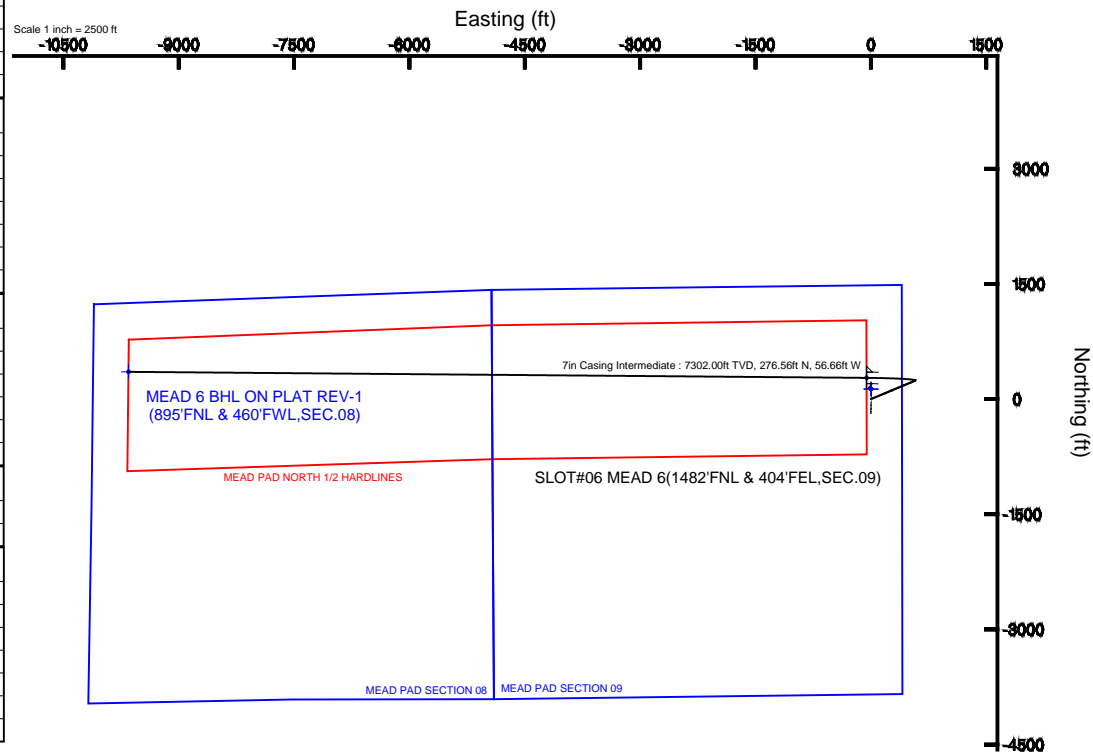
True vertical depths are referenced to RIG (RKB)	Grid System: NAD83 / Lambert Colorado SP, Northern Zone (501), US feet
Measured depths are referenced to RIG (RKB)	North Reference: True north
RIG (RKB) to Mean Sea Level: 4991 feet	Scale: True distance
Mean Sea Level to Mud line (At Slot: SLOT#06 MEAD 6(1482'FNL & 404'FEL,SEC.09): 0 feet	Depths are in feet
Coordinates are in feet referenced to Slot	Created by: painisnet on 6/13/2014

Facility Name			Grid East (US ft)	Grid North (US ft)	Latitude	Longitude
SEC.09-T07N-R66W			3201342.822	1459836.887	40°35'36.208"N	104°46'29.986"W
Slot	Local N (ft)	Local E (ft)	Grid East (US ft)	Grid North (US ft)	Latitude	Longitude
SLOT#06 MEAD 6(1482FNL & 404FEL,SEC.09)	-130.14	-1.08	3201342.806	1459706.741	40°35'34.922"N	104°46'30.000"W
RIG (RKB) to Mud line (At Slot: SLOT#06 MEAD 6(1482FNL & 404FEL,SEC.09))					4991ft	
Mean Sea Level to Mud line (At Slot: SLOT#06 MEAD 6(1482FNL & 404FEL,SEC.09))					0ft	
RIG (RKB) to Mean Sea Level					4991ft	

Name	MO (ft)	TVD (ft)	Local N (ft)	Local E (ft)	Grid East (US ft)	Grid North (US ft)	Latitude	Longitude
MEAD PAD SECTION 08		0.00	130.10	1.11	3201342.85	1459836.85	40°35'36.208"N	104°46'29.986"W
MEAD PAD SECTION 09			130.10	1.11	3201342.85	1459836.85	40°35'36.208"N	104°46'29.986"W
MEAD 6 BHL ON PLAT REV-1(89SF/LAL & 460FW/SEC.08)	17297.27	7302.00	354.96	-9653.30	3191687.19	1459962.75	40°35'38.411"N	104°48'35.132"W
MEAD 6 LANDING	7700.31	7302.00	278.56	-56.66	3201283.89	1459962.82	40°35'37.655"N	104°46'30.734"W
MEAD PAD NORTH 1/2 HARDLINES		7506.00	130.10	1.11	3201342.85	1459836.85	40°35'36.208"N	104°46'29.986"W

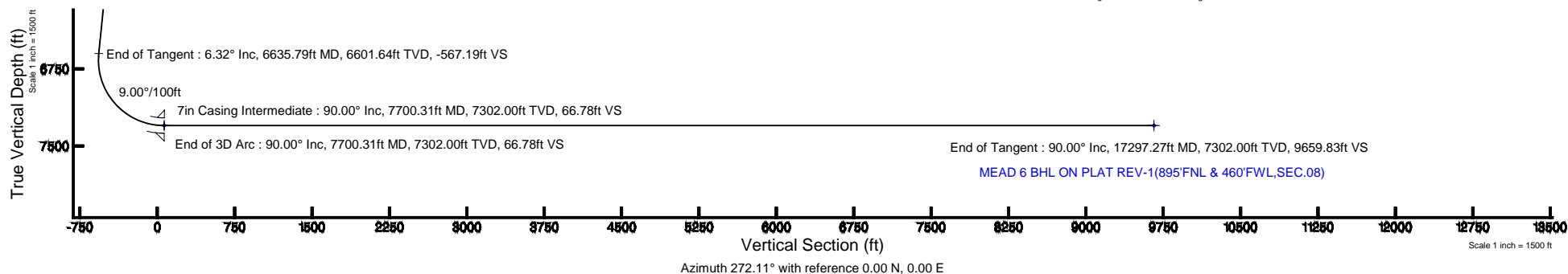
Start MD (ft)	End MD (ft)	Tool	Model	Log Name/Comment	Wellbore
24.00	18000.00	NaviTrak	NaviTrak (Standard)		MEAD 6 PWB

Design Comment	MD (ft)	Inc (°)	Az (°)	TVD (ft)	Local N (ft)	Local E (ft)	DLS (°/100ft)	VS (ft)
Tie On	24.00	0.000	67.318	24.00	0.00	0.00	0.00	0.00
End of Tangent	800.00	0.000	67.318	800.00	0.00	0.00	0.00	0.00
End of Build	1115.85	6.317	67.318	1115.21	6.71	16.05	2.00	-15.79
End of Tangent	6635.79	6.317	67.318	6601.64	240.91	576.43	0.00	-567.19
End of 3D Arc	7700.31	90.000	270.468	7302.00	276.56	-56.66	9.00	66.78
End of Tangent	17297.27	90.000	270.468	7302.00	354.96	-9653.30	0.00	9659.83



BGGM (1945.0 to 2016.0) Dip: 67.10° Field: 52862.2 nT
Magnetic North is 8.56 degrees East of True North (at 6/12/2014)

To correct azimuth from Magnetic to True add 8.56 degrees





Planned Wellpath Report

MEAD 6 (REV-A.0) PWP

Page 1 of 8



REFERENCE WELLPATH IDENTIFICATION

Operator	EXTRACTION OIL & GAS	Slot	SLOT#06 MEAD 6(1482'FNL & 404'FEL,SEC.09)
Area	COLORADO	Well	MEAD 6
Field	WELD COUNTY (NAD83/TRUE NORTH)	Wellbore	MEAD 6 PWB
Facility	SEC.09-T07N-R66W		

REPORT SETUP INFORMATION

Projection System	NAD83 / Lambert Colorado SP, Northern Zone (501), US feet	Software System	WellArchitect® 4.0.0
North Reference	True	User	Painsetr
Scale	0.999975	Report Generated	6/13/2014 at 10:44:28 AM
Convergence at slot	n/a	Database/Source file	WA_Denver/MEAD_6_PWB.xml

WELLPATH LOCATION

	Local coordinates		Grid coordinates		Geographic coordinates	
	North[ft]	East[ft]	Easting[US ft]	Northing[US ft]	Latitude	Longitude
Slot Location	-130.14	-1.08	3201342.81	1459706.74	40°35'34.922"N	104°46'30.000"W
Facility Reference Pt			3201342.82	1459836.89	40°35'36.208"N	104°46'29.986"W
Field Reference Pt			3185481.27	1419166.81	40°28'55.560"N	104°49'59.556"W

WELLPATH DATUM

Calculation method	Minimum curvature	RIG (RKB) to Facility Vertical Datum	4991.00ft
Horizontal Reference Pt	Slot	RIG (RKB) to Mean Sea Level	4991.00ft
Vertical Reference Pt	RIG (RKB)	RIG (RKB) to Mud Line at Slot (SLOT#06 MEAD 6(1482'FNL & 404'FEL,SEC.09))	4991.00ft
MD Reference Pt	RIG (RKB)	Section Origin	N 0.00, E 0.00 ft
Field Vertical Reference	Mean Sea Level	Section Azimuth	272.11°



Planned Wellpath Report

MEAD 6 (REV-A.0) PWP

Page 2 of 8



REFERENCE WELLPATH IDENTIFICATION

Operator	EXTRACTION OIL & GAS	Slot	SLOT#06 MEAD 6(1482'FNL & 404'FEL,SEC.09)
Area	COLORADO	Well	MEAD 6
Field	WELD COUNTY (NAD83/TRUE NORTH)	Wellbore	MEAD 6 PWB
Facility	SEC.09-T07N-R66W		

WELLPATH DATA (179 stations) † = interpolated/extrapolated station

MD [ft]	Inclination [°]	Azimuth [°]	TVD [ft]	Vert Sect [ft]	North [ft]	East [ft]	DLS [°/100ft]	Comments
0.00†	0.000	67.318	0.00	0.00	0.00	0.00	0.00	
24.00	0.000	67.318	24.00	0.00	0.00	0.00	0.00	Tie On
124.00†	0.000	67.318	124.00	0.00	0.00	0.00	0.00	
224.00†	0.000	67.318	224.00	0.00	0.00	0.00	0.00	
324.00†	0.000	67.318	324.00	0.00	0.00	0.00	0.00	
424.00†	0.000	67.318	424.00	0.00	0.00	0.00	0.00	
524.00†	0.000	67.318	524.00	0.00	0.00	0.00	0.00	
624.00†	0.000	67.318	624.00	0.00	0.00	0.00	0.00	
724.00†	0.000	67.318	724.00	0.00	0.00	0.00	0.00	
800.00	0.000	67.318	800.00	0.00	0.00	0.00	0.00	End of Tangent
824.00†	0.480	67.318	824.00	-0.09	0.04	0.09	2.00	
924.00†	2.480	67.318	923.96	-2.44	1.03	2.48	2.00	
1024.00†	4.480	67.318	1023.77	-7.95	3.38	8.08	2.00	
1115.85	6.317	67.318	1115.21	-15.79	6.71	16.05	2.00	End of Build
1124.00†	6.317	67.318	1123.31	-16.61	7.05	16.88	0.00	
1224.00†	6.317	67.318	1222.70	-26.59	11.30	27.03	0.00	
1324.00†	6.317	67.318	1322.10	-36.58	15.54	37.18	0.00	
1424.00†	6.317	67.318	1421.49	-46.57	19.78	47.33	0.00	
1524.00†	6.317	67.318	1520.88	-56.56	24.02	57.48	0.00	
1624.00†	6.317	67.318	1620.28	-66.55	28.27	67.64	0.00	
1724.00†	6.317	67.318	1719.67	-76.54	32.51	77.79	0.00	
1824.00†	6.317	67.318	1819.06	-86.53	36.75	87.94	0.00	
1924.00†	6.317	67.318	1918.45	-96.52	41.00	98.09	0.00	
2024.00†	6.317	67.318	2017.85	-106.51	45.24	108.24	0.00	
2124.00†	6.317	67.318	2117.24	-116.50	49.48	118.40	0.00	
2224.00†	6.317	67.318	2216.63	-126.49	53.72	128.55	0.00	
2324.00†	6.317	67.318	2316.03	-136.48	57.97	138.70	0.00	
2424.00†	6.317	67.318	2415.42	-146.46	62.21	148.85	0.00	
2524.00†	6.317	67.318	2514.81	-156.45	66.45	159.00	0.00	
2624.00†	6.317	67.318	2614.20	-166.44	70.70	169.15	0.00	



Planned Wellpath Report

MEAD 6 (REV-A.0) PWP

Page 3 of 8



REFERENCE WELLPATH IDENTIFICATION

Operator	EXTRACTION OIL & GAS	Slot	SLOT#06 MEAD 6(1482'FNL & 404'FEL,SEC.09)
Area	COLORADO	Well	MEAD 6
Field	WELD COUNTY (NAD83/TRUE NORTH)	Wellbore	MEAD 6 PWB
Facility	SEC.09-T07N-R66W		

WELLPATH DATA (179 stations) † = interpolated/extrapolated station

MD [ft]	Inclination [°]	Azimuth [°]	TVD [ft]	Vert Sect [ft]	North [ft]	East [ft]	DLS [°/100ft]	Comments
2724.00†	6.317	67.318	2713.60	-176.43	74.94	179.31	0.00	
2824.00†	6.317	67.318	2812.99	-186.42	79.18	189.46	0.00	
2924.00†	6.317	67.318	2912.38	-196.41	83.42	199.61	0.00	
3024.00†	6.317	67.318	3011.78	-206.40	87.67	209.76	0.00	
3124.00†	6.317	67.318	3111.17	-216.39	91.91	219.91	0.00	
3224.00†	6.317	67.318	3210.56	-226.38	96.15	230.07	0.00	
3324.00†	6.317	67.318	3309.95	-236.37	100.40	240.22	0.00	
3424.00†	6.317	67.318	3409.35	-246.36	104.64	250.37	0.00	
3524.00†	6.317	67.318	3508.74	-256.34	108.88	260.52	0.00	
3624.00†	6.317	67.318	3608.13	-266.33	113.12	270.67	0.00	
3724.00†	6.317	67.318	3707.52	-276.32	117.37	280.83	0.00	
3824.00†	6.317	67.318	3806.92	-286.31	121.61	290.98	0.00	
3924.00†	6.317	67.318	3906.31	-296.30	125.85	301.13	0.00	
4024.00†	6.317	67.318	4005.70	-306.29	130.10	311.28	0.00	
4124.00†	6.317	67.318	4105.10	-316.28	134.34	321.43	0.00	
4224.00†	6.317	67.318	4204.49	-326.27	138.58	331.59	0.00	
4324.00†	6.317	67.318	4303.88	-336.26	142.82	341.74	0.00	
4424.00†	6.317	67.318	4403.27	-346.25	147.07	351.89	0.00	
4524.00†	6.317	67.318	4502.67	-356.24	151.31	362.04	0.00	
4624.00†	6.317	67.318	4602.06	-366.23	155.55	372.19	0.00	
4724.00†	6.317	67.318	4701.45	-376.21	159.80	382.34	0.00	
4824.00†	6.317	67.318	4800.85	-386.20	164.04	392.50	0.00	
4924.00†	6.317	67.318	4900.24	-396.19	168.28	402.65	0.00	
5024.00†	6.317	67.318	4999.63	-406.18	172.52	412.80	0.00	
5124.00†	6.317	67.318	5099.02	-416.17	176.77	422.95	0.00	
5224.00†	6.317	67.318	5198.42	-426.16	181.01	433.10	0.00	
5324.00†	6.317	67.318	5297.81	-436.15	185.25	443.26	0.00	
5424.00†	6.317	67.318	5397.20	-446.14	189.50	453.41	0.00	
5524.00†	6.317	67.318	5496.60	-456.13	193.74	463.56	0.00	
5624.00†	6.317	67.318	5595.99	-466.12	197.98	473.71	0.00	



Planned Wellpath Report

MEAD 6 (REV-A.0) PWP

Page 4 of 8



REFERENCE WELLPATH IDENTIFICATION

Operator	EXTRACTION OIL & GAS	Slot	SLOT#06 MEAD 6(1482'FNL & 404'FEL,SEC.09)
Area	COLORADO	Well	MEAD 6
Field	WELD COUNTY (NAD83/TRUE NORTH)	Wellbore	MEAD 6 PWB
Facility	SEC.09-T07N-R66W		

WELLPATH DATA (179 stations) † = interpolated/extrapolated station

MD [ft]	Inclination [°]	Azimuth [°]	TVD [ft]	Vert Sect [ft]	North [ft]	East [ft]	DLS [°/100ft]	Comments
5724.00†	6.317	67.318	5695.38	-476.11	202.22	483.86	0.00	
5824.00†	6.317	67.318	5794.77	-486.10	206.47	494.02	0.00	
5924.00†	6.317	67.318	5894.17	-496.08	210.71	504.17	0.00	
6024.00†	6.317	67.318	5993.56	-506.07	214.95	514.32	0.00	
6124.00†	6.317	67.318	6092.95	-516.06	219.20	524.47	0.00	
6224.00†	6.317	67.318	6192.35	-526.05	223.44	534.62	0.00	
6324.00†	6.317	67.318	6291.74	-536.04	227.68	544.78	0.00	
6424.00†	6.317	67.318	6391.13	-546.03	231.92	554.93	0.00	
6524.00†	6.317	67.318	6490.52	-556.02	236.17	565.08	0.00	
6624.00†	6.317	67.318	6589.92	-566.01	240.41	575.23	0.00	
6635.79	6.317	67.318	6601.64	-567.19	240.91	576.43	0.00	End of Tangent
6724.00†	3.279	319.894	6689.65	-569.90	244.72	579.28	9.00	
6824.00†	11.404	282.928	6788.78	-558.24	249.13	567.78	9.00	
6924.00†	20.280	277.232	6884.89	-531.22	253.53	540.90	9.00	
7024.00†	29.229	274.929	6975.61	-489.49	257.82	499.30	9.00	
7124.00†	38.201	273.638	7058.71	-434.08	261.88	444.00	9.00	
7224.00†	47.183	272.779	7132.14	-366.35	265.63	376.37	9.00	
7324.00†	56.169	272.140	7194.08	-287.98	268.97	298.07	9.00	
7424.00†	65.157	271.623	7243.03	-200.90	271.81	211.03	9.00	
7524.00†	74.148	271.176	7277.76	-107.24	274.09	117.39	9.00	
7624.00†	83.139	270.768	7297.44	-9.32	275.74	19.47	9.00	
7700.31	90.000	270.468	7302.00 ¹	66.78	276.56	-56.66	9.00	End of 3D Arc
7724.00†	90.000	270.468	7302.00	90.46	276.76	-80.35	0.00	
7824.00†	90.000	270.468	7302.00	190.42	277.57	-180.34	0.00	
7924.00†	90.000	270.468	7302.00	290.38	278.39	-280.34	0.00	
8024.00†	90.000	270.468	7302.00	390.34	279.21	-380.34	0.00	
8124.00†	90.000	270.468	7302.00	490.30	280.02	-480.33	0.00	
8224.00†	90.000	270.468	7302.00	590.26	280.84	-580.33	0.00	
8324.00†	90.000	270.468	7302.00	690.22	281.66	-680.33	0.00	
8424.00†	90.000	270.468	7302.00	790.18	282.47	-780.32	0.00	



Planned Wellpath Report

MEAD 6 (REV-A.0) PWP

Page 5 of 8



REFERENCE WELLPATH IDENTIFICATION

Operator	EXTRACTION OIL & GAS	Slot	SLOT#06 MEAD 6(1482'FNL & 404'FEL,SEC.09)
Area	COLORADO	Well	MEAD 6
Field	WELD COUNTY (NAD83/TRUE NORTH)	Wellbore	MEAD 6 PWB
Facility	SEC.09-T07N-R66W		

WELLPATH DATA (179 stations) † = interpolated/extrapolated station

MD [ft]	Inclination [°]	Azimuth [°]	TVD [ft]	Vert Sect [ft]	North [ft]	East [ft]	DLS [°/100ft]	Comments
8524.00†	90.000	270.468	7302.00	890.14	283.29	-880.32	0.00	
8624.00†	90.000	270.468	7302.00	990.09	284.11	-980.32	0.00	
8724.00†	90.000	270.468	7302.00	1090.05	284.93	-1080.31	0.00	
8824.00†	90.000	270.468	7302.00	1190.01	285.74	-1180.31	0.00	
8924.00†	90.000	270.468	7302.00	1289.97	286.56	-1280.31	0.00	
9024.00†	90.000	270.468	7302.00	1389.93	287.38	-1380.30	0.00	
9124.00†	90.000	270.468	7302.00	1489.89	288.19	-1480.30	0.00	
9224.00†	90.000	270.468	7302.00	1589.85	289.01	-1580.30	0.00	
9324.00†	90.000	270.468	7302.00	1689.81	289.83	-1680.29	0.00	
9424.00†	90.000	270.468	7302.00	1789.77	290.64	-1780.29	0.00	
9524.00†	90.000	270.468	7302.00	1889.73	291.46	-1880.29	0.00	
9624.00†	90.000	270.468	7302.00	1989.69	292.28	-1980.28	0.00	
9724.00†	90.000	270.468	7302.00	2089.65	293.09	-2080.28	0.00	
9824.00†	90.000	270.468	7302.00	2189.60	293.91	-2180.28	0.00	
9924.00†	90.000	270.468	7302.00	2289.56	294.73	-2280.27	0.00	
10024.00†	90.000	270.468	7302.00	2389.52	295.55	-2380.27	0.00	
10124.00†	90.000	270.468	7302.00	2489.48	296.36	-2480.27	0.00	
10224.00†	90.000	270.468	7302.00	2589.44	297.18	-2580.26	0.00	
10324.00†	90.000	270.468	7302.00	2689.40	298.00	-2680.26	0.00	
10424.00†	90.000	270.468	7302.00	2789.36	298.81	-2780.26	0.00	
10524.00†	90.000	270.468	7302.00	2889.32	299.63	-2880.25	0.00	
10624.00†	90.000	270.468	7302.00	2989.28	300.45	-2980.25	0.00	
10724.00†	90.000	270.468	7302.00	3089.24	301.26	-3080.25	0.00	
10824.00†	90.000	270.468	7302.00	3189.20	302.08	-3180.24	0.00	
10924.00†	90.000	270.468	7302.00	3289.15	302.90	-3280.24	0.00	
11024.00†	90.000	270.468	7302.00	3389.11	303.71	-3380.24	0.00	
11124.00†	90.000	270.468	7302.00	3489.07	304.53	-3480.23	0.00	
11224.00†	90.000	270.468	7302.00	3589.03	305.35	-3580.23	0.00	
11324.00†	90.000	270.468	7302.00	3688.99	306.17	-3680.23	0.00	
11424.00†	90.000	270.468	7302.00	3788.95	306.98	-3780.22	0.00	



Planned Wellpath Report

MEAD 6 (REV-A.0) PWP

Page 6 of 8



REFERENCE WELLPATH IDENTIFICATION

Operator	EXTRACTION OIL & GAS	Slot	SLOT#06 MEAD 6(1482'FNL & 404'FEL,SEC.09)
Area	COLORADO	Well	MEAD 6
Field	WELD COUNTY (NAD83/TRUE NORTH)	Wellbore	MEAD 6 PWB
Facility	SEC.09-T07N-R66W		

WELLPATH DATA (179 stations) † = interpolated/extrapolated station

MD [ft]	Inclination [°]	Azimuth [°]	TVD [ft]	Vert Sect [ft]	North [ft]	East [ft]	DLS [°/100ft]	Comments
11524.00†	90.000	270.468	7302.00	3888.91	307.80	-3880.22	0.00	
11624.00†	90.000	270.468	7302.00	3988.87	308.62	-3980.22	0.00	
11724.00†	90.000	270.468	7302.00	4088.83	309.43	-4080.21	0.00	
11824.00†	90.000	270.468	7302.00	4188.79	310.25	-4180.21	0.00	
11924.00†	90.000	270.468	7302.00	4288.75	311.07	-4280.21	0.00	
12024.00†	90.000	270.468	7302.00	4388.71	311.88	-4380.20	0.00	
12124.00†	90.000	270.468	7302.00	4488.66	312.70	-4480.20	0.00	
12224.00†	90.000	270.468	7302.00	4588.62	313.52	-4580.20	0.00	
12324.00†	90.000	270.468	7302.00	4688.58	314.33	-4680.19	0.00	
12424.00†	90.000	270.468	7302.00	4788.54	315.15	-4780.19	0.00	
12524.00†	90.000	270.468	7302.00	4888.50	315.97	-4880.19	0.00	
12624.00†	90.000	270.468	7302.00	4988.46	316.79	-4980.18	0.00	
12724.00†	90.000	270.468	7302.00	5088.42	317.60	-5080.18	0.00	
12824.00†	90.000	270.468	7302.00	5188.38	318.42	-5180.18	0.00	
12924.00†	90.000	270.468	7302.00	5288.34	319.24	-5280.17	0.00	
13024.00†	90.000	270.468	7302.00	5388.30	320.05	-5380.17	0.00	
13124.00†	90.000	270.468	7302.00	5488.26	320.87	-5480.17	0.00	
13224.00†	90.000	270.468	7302.00	5588.22	321.69	-5580.16	0.00	
13324.00†	90.000	270.468	7302.00	5688.17	322.50	-5680.16	0.00	
13424.00†	90.000	270.468	7302.00	5788.13	323.32	-5780.16	0.00	
13524.00†	90.000	270.468	7302.00	5888.09	324.14	-5880.15	0.00	
13624.00†	90.000	270.468	7302.00	5988.05	324.95	-5980.15	0.00	
13724.00†	90.000	270.468	7302.00	6088.01	325.77	-6080.15	0.00	
13824.00†	90.000	270.468	7302.00	6187.97	326.59	-6180.14	0.00	
13924.00†	90.000	270.468	7302.00	6287.93	327.41	-6280.14	0.00	
14024.00†	90.000	270.468	7302.00	6387.89	328.22	-6380.14	0.00	
14124.00†	90.000	270.468	7302.00	6487.85	329.04	-6480.13	0.00	
14224.00†	90.000	270.468	7302.00	6587.81	329.86	-6580.13	0.00	
14324.00†	90.000	270.468	7302.00	6687.77	330.67	-6680.13	0.00	
14424.00†	90.000	270.468	7302.00	6787.73	331.49	-6780.12	0.00	



Planned Wellpath Report

MEAD 6 (REV-A.0) PWP

Page 7 of 8



REFERENCE WELLPATH IDENTIFICATION

Operator	EXTRACTION OIL & GAS	Slot	SLOT#06 MEAD 6(1482'FNL & 404'FEL,SEC.09)
Area	COLORADO	Well	MEAD 6
Field	WELD COUNTY (NAD83/TRUE NORTH)	Wellbore	MEAD 6 PWB
Facility	SEC.09-T07N-R66W		

WELLPATH DATA (179 stations) † = interpolated/extrapolated station

MD [ft]	Inclination [°]	Azimuth [°]	TVD [ft]	Vert Sect [ft]	North [ft]	East [ft]	DLS [°/100ft]	Comments
14524.00†	90.000	270.468	7302.00	6887.68	332.31	-6880.12	0.00	
14624.00†	90.000	270.468	7302.00	6987.64	333.12	-6980.12	0.00	
14724.00†	90.000	270.468	7302.00	7087.60	333.94	-7080.11	0.00	
14824.00†	90.000	270.468	7302.00	7187.56	334.76	-7180.11	0.00	
14924.00†	90.000	270.468	7302.00	7287.52	335.57	-7280.11	0.00	
15024.00†	90.000	270.468	7302.00	7387.48	336.39	-7380.10	0.00	
15124.00†	90.000	270.468	7302.00	7487.44	337.21	-7480.10	0.00	
15224.00†	90.000	270.468	7302.00	7587.40	338.03	-7580.10	0.00	
15324.00†	90.000	270.468	7302.00	7687.36	338.84	-7680.09	0.00	
15424.00†	90.000	270.468	7302.00	7787.32	339.66	-7780.09	0.00	
15524.00†	90.000	270.468	7302.00	7887.28	340.48	-7880.09	0.00	
15624.00†	90.000	270.468	7302.00	7987.23	341.29	-7980.08	0.00	
15724.00†	90.000	270.468	7302.00	8087.19	342.11	-8080.08	0.00	
15824.00†	90.000	270.468	7302.00	8187.15	342.93	-8180.08	0.00	
15924.00†	90.000	270.468	7302.00	8287.11	343.74	-8280.07	0.00	
16024.00†	90.000	270.468	7302.00	8387.07	344.56	-8380.07	0.00	
16124.00†	90.000	270.468	7302.00	8487.03	345.38	-8480.07	0.00	
16224.00†	90.000	270.468	7302.00	8586.99	346.19	-8580.06	0.00	
16324.00†	90.000	270.468	7302.00	8686.95	347.01	-8680.06	0.00	
16424.00†	90.000	270.468	7302.00	8786.91	347.83	-8780.06	0.00	
16524.00†	90.000	270.468	7302.00	8886.87	348.65	-8880.05	0.00	
16624.00†	90.000	270.468	7302.00	8986.83	349.46	-8980.05	0.00	
16724.00†	90.000	270.468	7302.00	9086.79	350.28	-9080.05	0.00	
16824.00†	90.000	270.468	7302.00	9186.74	351.10	-9180.04	0.00	
16924.00†	90.000	270.468	7302.00	9286.70	351.91	-9280.04	0.00	
17024.00†	90.000	270.468	7302.00	9386.66	352.73	-9380.04	0.00	
17124.00†	90.000	270.468	7302.00	9486.62	353.55	-9480.03	0.00	
17224.00†	90.000	270.468	7302.00	9586.58	354.36	-9580.03	0.00	
17297.27	90.000	270.468	7302.00 ²	9659.83	354.96	-9653.30	0.00	End of Tangent



Planned Wellpath Report

MEAD 6 (REV-A.0) PWP

Page 8 of 8



REFERENCE WELLPATH IDENTIFICATION

Operator	EXTRACTION OIL & GAS	Slot	SLOT#06 MEAD 6(1482'FNL & 404'FEL,SEC.09)
Area	COLORADO	Well	MEAD 6
Field	WELD COUNTY (NAD83/TRUE NORTH)	Wellbore	MEAD 6 PWB
Facility	SEC.09-T07N-R66W		

HOLE & CASING SECTIONS - Ref Wellbore: MEAD 6 PWB Ref Wellpath: MEAD 6 (REV-A.0) PWP

String/Diameter	Start MD [ft]	End MD [ft]	Interval [ft]	Start TVD [ft]	End TVD [ft]	Start N/S [ft]	Start E/W [ft]	End N/S [ft]	End E/W [ft]
7in Casing Intermediate	24.00	7700.31	7676.31	24.00	7302.00	0.00	0.00	276.56	-56.66

TARGETS

Name	MD [ft]	TVD [ft]	North [ft]	East [ft]	Grid East [US ft]	Grid North [US ft]	Latitude	Longitude	Shape
MEAD PAD SECTION 08		0.00	130.10	1.11	3201342.85	1459836.85	40°35'36.208"N	104°46'29.986"W	polygon
MEAD PAD SECTION 09		0.00	130.10	1.11	3201342.85	1459836.85	40°35'36.208"N	104°46'29.986"W	polygon
2) MEAD 6 BHL ON PLAT REV-1 (895'FNL & 460'FWL,SEC.08)	17297.27	7302.00	354.96	-9653.30	3191687.19	1459982.76	40°35'38.411"N	104°48'35.132"W	point
1) MEAD 6 LANDING	7700.31	7302.00	276.56	-56.66	3201283.89	1459982.82	40°35'37.655"N	104°46'30.734"W	point
MEAD PAD NORTH 1/2 HARDLINES		7505.00	130.10	1.11	3201342.85	1459836.85	40°35'36.208"N	104°46'29.986"W	polygon

SURVEY PROGRAM - Ref Wellbore: MEAD 6 PWB Ref Wellpath: MEAD 6 (REV-A.0) PWP

Start MD [ft]	End MD [ft]	Positional Uncertainty Model	Log Name/Comment	Wellbore
24.00	18000.00	NaviTrak (Standard)		MEAD 6 PWB