

# Tekton Energy

Well Name: **Diamond Valley East #10**

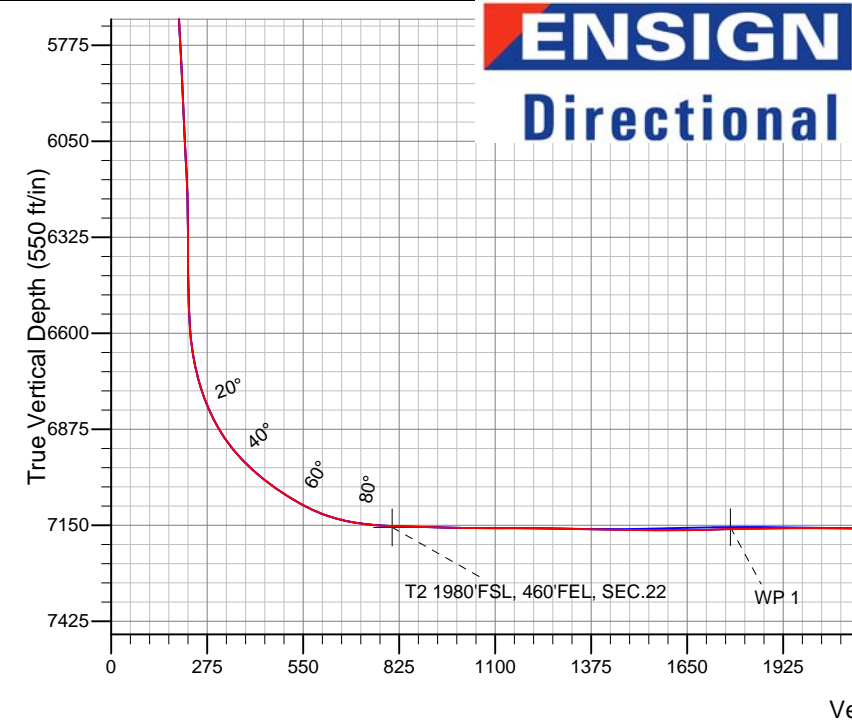
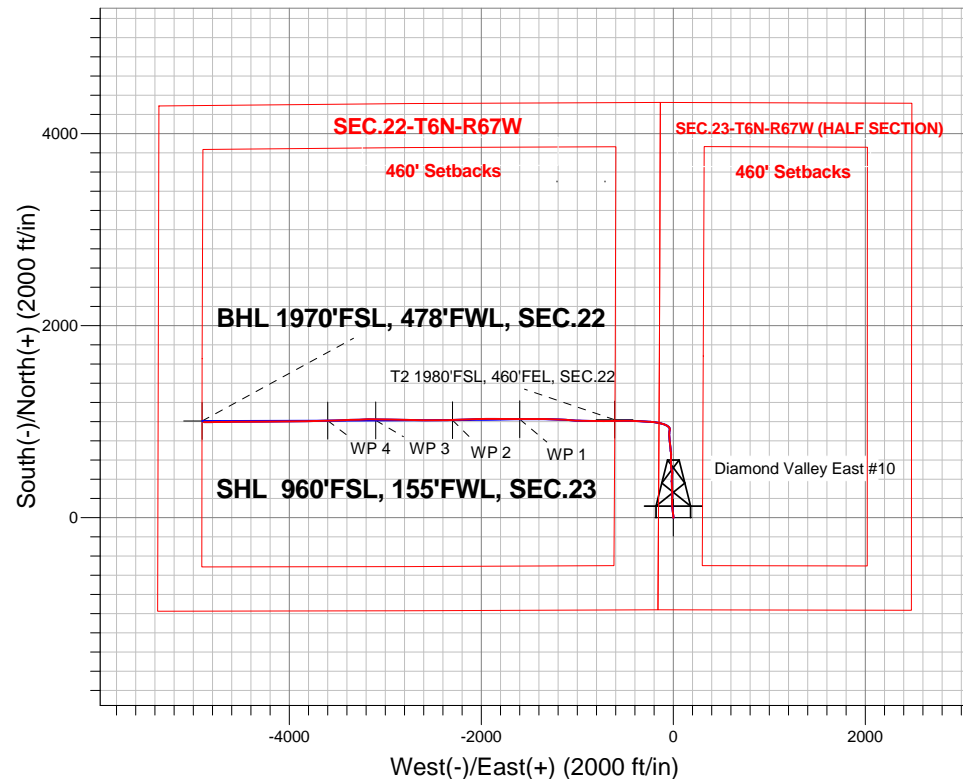
Surface Location: Diamond Valley East Pad Sec.23-T6N-R67W  
North American Datum 1983 , US State Plane 1983 , Colorado Northern Zone

Ground Elevation: 4769.0

+N/-S	+E/-W	Northing	Easting	Latitude	Longitude	Slot
0.0	0.0	1413897.54	3175340.11	40.467840	-104.869800	
RKB - 22.5' WELL @ 4791.5ft (RKB - 22.5')						

## FINAL SURVEY

Projected Bottom Hole Location  
11843'MD 7154'TVD 996'N & 4890'W of SHL  
91.4 degree Incl @ 269.95  
degree AZM



**ENSIGN**  
**Directional**

Diamond Valley East Pad Sec.23-T6N-R67W  
Diamond Valley East #10

10:40, March 17 2014

Wellbore #1

### ANNOTATIONS

No annotation data is available.

### LEGEND

- ◆ Diamond Valley East #10, Wellbore #1, Plan #2 (3-10-14) V0
- Wellbore #1
- Survey #1

Vertical Section at 281.58° (550 ft/in)



## **Tekton Energy**

**SEC.23-T6N-R67W**

**Diamond Valley East Pad Sec.23-T6N-R67W**

**Diamond Valley East #10**

**Wellbore #1**

**Survey: Survey #1**

## **Standard Survey Report**

**17 March, 2014**

<b>Company:</b>	Tekton Energy	<b>Local Co-ordinate Reference:</b>	Well Diamond Valley East #10
<b>Project:</b>	SEC.23-T6N-R67W	<b>TVD Reference:</b>	WELL @ 4791.5ft (RKB - 22.5')
<b>Site:</b>	Diamond Valley East Pad Sec.23-T6N-R67W	<b>MD Reference:</b>	WELL @ 4791.5ft (RKB - 22.5')
<b>Well:</b>	Diamond Valley East #10	<b>North Reference:</b>	True
<b>Wellbore:</b>	Wellbore #1	<b>Survey Calculation Method:</b>	Minimum Curvature
<b>Design:</b>	Wellbore #1	<b>Database:</b>	Landmark

<b>Project</b>	SEC.23-T6N-R67W, Weld County, Colorado		
<b>Map System:</b>	US State Plane 1983	<b>System Datum:</b>	Mean Sea Level
<b>Geo Datum:</b>	North American Datum 1983		Using Well Reference Point
<b>Map Zone:</b>	Colorado Northern Zone		Using geodetic scale factor

Site	Diamond Valley East Pad Sec.23-T6N-R67W				
Site Position:		Northing:	1,413,770.02ft	Latitude:	40.467490
From:	Lat/Long	Easting:	3,175,338.24ft	Longitude:	-104.869810
Position Uncertainty:	0.0 ft	Slot Radius:	"	Grid Convergence:	0.41 °

Well	Diamond Valley East #10					
Well Position	+N/-S	0.0 ft	Northing:	1,413,897.54 ft	Latitude:	40.467840
	+E/-W	0.0 ft	Easting:	3,175,340.11 ft	Longitude:	-104.869800
Position Uncertainty		0.0 ft	Wellhead Elevation:	ft	Ground Level:	4,769.0 ft

<b>Wellbore</b>	Wellbore #1				
<b>Magnetics</b>	<b>Model Name</b>	<b>Sample Date</b>	<b>Declination (°)</b>	<b>Dip Angle (°)</b>	<b>Field Strength (nT)</b>
	IGRF2010	2/26/2014	8.56	66.99	52,871

<b>Design</b>	Wellbore #1				
<b>Audit Notes:</b>					
<b>Version:</b>	1.0	<b>Phase:</b>	ACTUAL	<b>Tie On Depth:</b>	0.0
<b>Vertical Section:</b>	<b>Depth From (TVD) (ft)</b>	<b>+N/-S (ft)</b>	<b>+E/-W (ft)</b>	<b>Direction (°)</b>	
	0.0	0.0	0.0	281.58	

<b>Survey Program</b>	<b>Date</b>	3/17/2014			
<b>From (ft)</b>	<b>To (ft)</b>	<b>Survey (Wellbore)</b>	<b>Tool Name</b>	<b>Description</b>	
173.0	11,843.0	Survey #1 (Wellbore #1)	MWD	MWD - Standard	

<b>Survey</b>										
<b>Measured Depth (ft)</b>	<b>Inclination (°)</b>	<b>Azimuth (°)</b>	<b>Vertical Depth (ft)</b>	<b>+N/-S (ft)</b>	<b>+E/-W (ft)</b>	<b>Vertical Section (ft)</b>	<b>Dogleg Rate (°/100ft)</b>	<b>Build Rate (°/100ft)</b>	<b>Turn Rate (°/100ft)</b>	
0.0	0.00	0.00	0.0	0.0	0.0	0.0	0.00	0.00	0.00	
1.0	0.00	113.00	1.0	0.0	0.0	0.0	0.29	0.29	0.00	
<b>SHL 960'FSL, 155'FWL, SEC.23</b>										
173.0	0.50	113.00	173.0	-0.3	0.7	-0.7	0.29	0.29	0.00	
266.0	0.20	120.70	266.0	-0.5	1.2	-1.3	0.33	-0.32	8.28	
360.0	0.40	119.90	360.0	-0.8	1.6	-1.8	0.21	0.21	-0.85	
454.0	0.30	143.30	454.0	-1.1	2.1	-2.3	0.18	-0.11	24.89	
547.0	0.40	287.90	547.0	-1.2	1.9	-2.1	0.72	0.11	155.48	
641.0	1.30	347.80	641.0	-0.1	1.4	-1.4	1.23	0.96	63.72	
734.0	2.40	357.70	733.9	2.9	1.1	-0.5	1.23	1.18	10.65	
828.0	3.90	354.80	827.8	8.0	0.7	0.9	1.60	1.60	-3.09	
853.0	4.00	351.90	852.7	9.7	0.5	1.5	0.89	0.40	-11.60	
918.0	5.20	351.30	917.5	14.9	-0.3	3.3	1.85	1.85	-0.92	

<b>Company:</b>	Tekton Energy	<b>Local Co-ordinate Reference:</b>	Well Diamond Valley East #10
<b>Project:</b>	SEC.23-T6N-R67W	<b>TVD Reference:</b>	WELL @ 4791.5ft (RKB - 22.5')
<b>Site:</b>	Diamond Valley East Pad Sec.23-T6N-R67W	<b>MD Reference:</b>	WELL @ 4791.5ft (RKB - 22.5')
<b>Well:</b>	Diamond Valley East #10	<b>North Reference:</b>	True
<b>Wellbore:</b>	Wellbore #1	<b>Survey Calculation Method:</b>	Minimum Curvature
<b>Design:</b>	Wellbore #1	<b>Database:</b>	Landmark

### Survey

Measured Depth (ft)	Inclination (°)	Azimuth (°)	Vertical Depth (ft)	+N/-S (ft)	+E/-W (ft)	Vertical Section (ft)	Dogleg Rate (°/100ft)	Build Rate (°/100ft)	Turn Rate (°/100ft)
1,012.0	6.70	349.80	1,011.0	24.5	-1.9	6.8	1.60	1.60	-1.60
1,106.0	8.60	355.60	1,104.2	36.9	-3.4	10.7	2.18	2.02	6.17
1,201.0	10.00	355.40	1,197.9	52.2	-4.6	15.0	1.47	1.47	-0.21
1,295.0	9.10	352.20	1,290.6	67.7	-6.3	19.7	1.11	-0.96	-3.40
1,388.0	9.60	350.80	1,382.4	82.7	-8.5	24.9	0.59	0.54	-1.51
1,482.0	10.70	350.50	1,474.9	99.0	-11.2	30.8	1.17	1.17	-0.32
1,576.0	10.50	352.00	1,567.3	116.1	-13.8	36.9	0.36	-0.21	1.60
1,669.0	10.20	359.10	1,658.8	132.7	-15.1	41.5	1.41	-0.32	7.63
1,763.0	8.70	4.30	1,751.5	148.1	-14.7	44.2	1.83	-1.60	5.53
1,856.0	9.30	4.00	1,843.4	162.6	-13.7	46.1	0.65	0.65	-0.32
1,950.0	9.30	0.10	1,936.1	177.8	-13.1	48.6	0.67	0.00	-4.15
2,043.0	9.10	357.80	2,027.9	192.7	-13.4	51.8	0.45	-0.22	-2.47
2,137.0	9.50	5.40	2,120.7	207.8	-13.0	54.4	1.37	0.43	8.09
2,231.0	9.90	1.90	2,213.4	223.6	-12.0	56.6	0.76	0.43	-3.72
2,324.0	10.80	358.40	2,304.9	240.3	-11.9	60.0	1.18	0.97	-3.76
2,418.0	10.50	353.80	2,397.2	257.6	-13.1	64.6	0.96	-0.32	-4.89
2,512.0	10.60	0.60	2,489.6	274.8	-14.0	68.8	1.33	0.11	7.23
2,605.0	10.10	358.20	2,581.1	291.5	-14.1	72.4	0.71	-0.54	-2.58
2,699.0	9.20	351.90	2,673.8	307.2	-15.4	76.8	1.47	-0.96	-6.70
2,793.0	10.00	359.40	2,766.5	322.8	-16.6	81.1	1.58	0.85	7.98
2,886.0	9.60	2.60	2,858.1	338.6	-16.3	84.0	0.73	-0.43	3.44
2,980.0	8.50	355.20	2,951.0	353.4	-16.5	87.2	1.70	-1.17	-7.87
3,074.0	7.40	355.40	3,044.1	366.3	-17.6	90.8	1.17	-1.17	0.21
3,169.0	7.20	0.30	3,138.3	378.4	-18.1	93.7	0.69	-0.21	5.16
3,262.0	7.80	5.60	3,230.5	390.5	-17.4	95.5	0.98	0.65	5.70
3,357.0	6.80	358.70	3,324.7	402.5	-16.9	97.4	1.40	-1.05	-7.26
3,451.0	7.80	356.60	3,418.0	414.5	-17.4	100.3	1.10	1.06	-2.23
3,544.0	6.10	6.30	3,510.3	425.7	-17.3	102.4	2.22	-1.83	10.43
3,638.0	8.40	6.60	3,603.5	437.4	-15.9	103.4	2.45	2.45	0.32
3,733.0	9.30	6.30	3,697.4	452.0	-14.3	104.7	0.95	0.95	-0.32
3,826.0	10.50	2.40	3,789.0	467.9	-13.1	106.8	1.48	1.29	-4.19
3,921.0	10.20	351.20	3,882.5	484.9	-14.0	111.1	2.14	-0.32	-11.79
4,015.0	9.80	339.60	3,975.1	500.6	-18.1	118.2	2.18	-0.43	-12.34
4,109.0	9.80	349.20	4,067.7	516.0	-22.4	125.5	1.74	0.00	10.21
4,203.0	9.70	353.10	4,160.3	531.7	-24.8	131.1	0.71	-0.11	4.15
4,298.0	9.90	0.80	4,253.9	547.8	-25.7	135.1	1.39	0.21	8.11
4,392.0	11.00	359.80	4,346.4	564.8	-25.6	138.5	1.19	1.17	-1.06
4,486.0	9.70	356.60	4,438.9	581.7	-26.1	142.4	1.51	-1.38	-3.40
4,580.0	9.20	0.80	4,531.6	597.1	-26.5	145.8	0.91	-0.53	4.47
4,674.0	10.30	4.00	4,624.2	613.0	-25.8	148.3	1.30	1.17	3.40
4,768.0	10.30	5.00	4,716.7	629.8	-24.4	150.4	0.19	0.00	1.06
4,863.0	10.80	359.60	4,810.1	647.1	-23.8	153.2	1.17	0.53	-5.68
4,957.0	9.30	354.80	4,902.7	663.5	-24.5	157.2	1.83	-1.60	-5.11
5,051.0	7.70	354.00	4,995.6	677.3	-25.9	161.3	1.71	-1.70	-0.85
5,146.0	7.10	352.90	5,089.8	689.5	-27.3	165.1	0.65	-0.63	-1.16
5,240.0	8.10	354.80	5,183.0	701.9	-28.6	168.9	1.10	1.06	2.02
5,334.0	8.70	358.20	5,276.0	715.6	-29.4	172.5	0.83	0.64	3.62
5,428.0	9.70	351.70	5,368.8	730.5	-30.8	176.8	1.53	1.06	-6.91
5,523.0	10.50	353.60	5,462.3	747.0	-32.9	182.2	0.91	0.84	2.00
5,617.0	9.30	352.70	5,554.9	763.1	-34.8	187.3	1.29	-1.28	-0.96
5,711.0	9.00	356.60	5,647.7	777.9	-36.2	191.7	0.73	-0.32	4.15
5,805.0	9.30	351.50	5,740.5	792.8	-37.8	196.2	0.92	0.32	-5.43
5,899.0	9.60	356.10	5,833.3	808.1	-39.4	200.9	0.86	0.32	4.89
5,993.0	9.50	355.90	5,926.0	823.7	-40.5	205.1	0.11	-0.11	-0.21

<b>Company:</b>	Tekton Energy	<b>Local Co-ordinate Reference:</b>	Well Diamond Valley East #10
<b>Project:</b>	SEC.23-T6N-R67W	<b>TVD Reference:</b>	WELL @ 4791.5ft (RKB - 22.5')
<b>Site:</b>	Diamond Valley East Pad Sec.23-T6N-R67W	<b>MD Reference:</b>	WELL @ 4791.5ft (RKB - 22.5')
<b>Well:</b>	Diamond Valley East #10	<b>North Reference:</b>	True
<b>Wellbore:</b>	Wellbore #1	<b>Survey Calculation Method:</b>	Minimum Curvature
<b>Design:</b>	Wellbore #1	<b>Database:</b>	Landmark

#### Survey

Measured Depth (ft)	Inclination (°)	Azimuth (°)	Vertical Depth (ft)	+N/-S (ft)	+E/-W (ft)	Vertical Section (ft)	Dogleg Rate (°/100ft)	Build Rate (°/100ft)	Turn Rate (°/100ft)
6,087.0	9.00	355.00	6,018.7	838.7	-41.7	209.3	0.55	-0.53	-0.96
6,181.0	9.60	353.40	6,111.5	853.9	-43.2	213.8	0.69	0.64	-1.70
6,274.0	10.20	2.20	6,203.1	869.8	-43.8	217.6	1.75	0.65	9.46
6,367.0	9.20	6.10	6,294.8	885.4	-42.7	219.6	1.29	-1.08	4.19
6,460.0	8.30	11.50	6,386.7	899.4	-40.6	220.4	1.31	-0.97	5.81
6,553.0	9.00	9.40	6,478.6	913.1	-38.1	220.6	0.83	0.75	-2.26
6,647.0	9.30	346.80	6,571.5	927.8	-38.6	224.1	3.81	0.32	-24.04
6,694.0	9.80	332.30	6,617.8	935.0	-41.3	228.2	5.21	1.06	-30.85
6,741.0	11.80	316.40	6,664.0	942.1	-46.5	234.7	7.60	4.26	-33.83
6,788.0	14.70	308.80	6,709.8	949.3	-54.5	244.0	7.19	6.17	-16.17
6,835.0	18.30	301.20	6,754.8	956.8	-65.4	256.2	8.92	7.66	-16.17
6,882.0	22.20	296.00	6,798.9	964.6	-79.7	271.8	9.13	8.30	-11.06
6,929.0	26.90	289.10	6,841.7	971.9	-97.8	290.9	11.70	10.00	-14.68
6,976.0	31.70	286.10	6,882.6	978.8	-119.7	313.8	10.68	10.21	-6.38
7,023.0	37.10	282.30	6,921.4	985.3	-145.4	340.3	12.36	11.49	-8.09
7,070.0	42.70	279.10	6,957.5	990.8	-175.0	370.4	12.69	11.91	-6.81
7,117.0	48.50	276.80	6,990.3	995.4	-208.3	403.9	12.82	12.34	-4.89
7,164.0	52.10	274.20	7,020.3	998.9	-244.3	439.9	8.76	7.66	-5.53
7,212.0	55.40	272.90	7,048.7	1,001.3	-282.9	478.2	7.21	6.88	-2.71
7,259.0	58.90	272.60	7,074.2	1,003.2	-322.3	517.2	7.47	7.45	-0.64
7,306.0	63.80	272.40	7,096.7	1,005.0	-363.5	557.9	10.43	10.43	-0.43
7,353.0	68.40	272.60	7,115.8	1,006.8	-406.4	600.3	9.79	9.79	0.43
7,401.0	74.80	271.50	7,130.9	1,008.5	-451.9	645.2	13.51	13.33	-2.29
7,448.0	80.10	270.10	7,141.1	1,009.1	-497.8	690.3	11.65	11.28	-2.98
7,495.0	84.20	269.10	7,147.5	1,008.8	-544.3	735.8	8.97	8.72	-2.13
7,542.0	87.10	268.70	7,151.1	1,007.9	-591.2	781.5	6.23	6.17	-0.85
7,562.9	87.74	269.15	7,152.1	1,007.5	-612.1	801.9	3.74	3.04	2.17
<b>T2 1980'FSL, 460'FEL, SEC.22</b>									
7,565.0	87.80	269.20	7,152.1	1,007.4	-614.2	803.9	3.74	3.04	2.17
7,637.0	88.50	269.61	7,154.5	1,006.7	-686.1	874.3	1.13	0.97	0.57
7,684.0	88.37	270.28	7,155.7	1,006.7	-733.1	920.3	1.45	-0.28	1.43
7,731.0	88.90	270.64	7,156.9	1,007.0	-780.1	966.4	1.36	1.13	0.77
7,778.0	89.43	270.74	7,157.5	1,007.6	-827.1	1,012.6	1.15	1.13	0.21
7,872.0	89.34	270.80	7,158.6	1,008.9	-921.1	1,104.9	0.12	-0.10	0.06
7,966.0	90.31	272.74	7,158.8	1,011.8	-1,015.0	1,197.5	2.31	1.03	2.06
8,060.0	88.81	273.91	7,159.6	1,017.2	-1,108.8	1,290.5	2.02	-1.60	1.24
8,154.0	88.81	273.38	7,161.5	1,023.2	-1,202.6	1,383.6	0.56	0.00	-0.56
8,248.0	88.72	270.95	7,163.5	1,026.7	-1,296.5	1,476.3	2.59	-0.10	-2.59
8,342.0	89.96	270.37	7,164.6	1,027.8	-1,390.5	1,568.6	1.46	1.32	-0.62
8,436.0	90.75	269.61	7,164.0	1,027.8	-1,484.5	1,660.7	1.17	0.84	-0.81
8,530.0	92.07	271.11	7,161.7	1,028.4	-1,578.5	1,752.8	2.13	1.40	1.60
8,551.9	91.83	270.92	7,161.0	1,028.8	-1,600.4	1,774.4	1.42	-1.12	-0.87
<b>WP 1</b>									
8,625.0	91.01	270.28	7,159.2	1,029.5	-1,673.4	1,846.1	1.42	-1.12	-0.87
8,719.0	90.13	270.04	7,158.2	1,029.8	-1,767.4	1,938.2	0.97	-0.94	-0.26
8,813.0	89.60	269.35	7,158.5	1,029.3	-1,861.4	2,030.2	0.93	-0.56	-0.73
8,907.0	89.69	269.33	7,159.0	1,028.2	-1,955.4	2,122.1	0.10	0.10	-0.02
9,001.0	89.34	268.55	7,159.8	1,026.5	-2,049.4	2,213.8	0.91	-0.37	-0.83
9,095.0	89.43	267.99	7,160.9	1,023.6	-2,143.4	2,305.2	0.60	0.10	-0.60
9,190.0	88.99	267.86	7,162.2	1,020.2	-2,238.3	2,397.6	0.48	-0.46	-0.14
9,251.6	89.51	268.38	7,163.0	1,018.2	-2,299.9	2,457.5	1.20	0.84	0.85
<b>WP 2</b>									
9,284.0	89.78	268.66	7,163.2	1,017.4	-2,332.2	2,489.0	1.20	0.84	0.85
9,378.0	89.87	269.06	7,163.5	1,015.5	-2,426.2	2,580.7	0.44	0.10	0.43

<b>Company:</b>	Tekton Energy	<b>Local Co-ordinate Reference:</b>	Well Diamond Valley East #10
<b>Project:</b>	SEC.23-T6N-R67W	<b>TVD Reference:</b>	WELL @ 4791.5ft (RKB - 22.5')
<b>Site:</b>	Diamond Valley East Pad Sec.23-T6N-R67W	<b>MD Reference:</b>	WELL @ 4791.5ft (RKB - 22.5')
<b>Well:</b>	Diamond Valley East #10	<b>North Reference:</b>	True
<b>Wellbore:</b>	Wellbore #1	<b>Survey Calculation Method:</b>	Minimum Curvature
<b>Design:</b>	Wellbore #1	<b>Database:</b>	Landmark

## Survey

Measured Depth (ft)	Inclination (°)	Azimuth (°)	Vertical Depth (ft)	+N/-S (ft)	+E/-W (ft)	Vertical Section (ft)	Dogleg Rate (°/100ft)	Build Rate (°/100ft)	Turn Rate (°/100ft)
9,473.0	90.57	269.51	7,163.1	1,014.3	-2,521.2	2,673.5	0.88	0.74	0.47
9,567.0	90.48	270.26	7,162.2	1,014.1	-2,615.2	2,765.6	0.80	-0.10	0.80
9,662.0	90.13	271.39	7,161.7	1,015.5	-2,710.2	2,858.9	1.25	-0.37	1.19
9,755.0	89.34	271.70	7,162.2	1,018.0	-2,803.2	2,950.5	0.91	-0.85	0.33
9,850.0	88.46	271.80	7,164.0	1,020.9	-2,898.1	3,044.1	0.93	-0.93	0.11
9,944.0	87.85	270.99	7,167.0	1,023.2	-2,992.0	3,136.5	1.08	-0.65	-0.86
10,038.0	87.58	271.12	7,170.8	1,024.9	-3,085.9	3,228.9	0.32	-0.29	0.14
10,051.7	87.66	270.75	7,171.3	1,025.1	-3,099.6	3,242.3	2.79	0.56	-2.73
<b>WP 3</b>									
10,132.0	88.11	268.55	7,174.3	1,024.6	-3,179.8	3,320.8	2.79	0.56	-2.73
10,226.0	89.43	267.86	7,176.3	1,021.7	-3,273.8	3,412.2	1.58	1.40	-0.73
10,320.0	91.36	268.70	7,175.7	1,018.9	-3,367.7	3,503.7	2.24	2.05	0.89
10,414.0	90.84	267.40	7,173.9	1,015.7	-3,461.7	3,595.1	1.49	-0.55	-1.38
10,508.0	90.84	267.90	7,172.5	1,011.8	-3,555.6	3,686.3	0.53	0.00	0.53
10,552.3	91.13	268.04	7,171.7	1,010.2	-3,599.9	3,729.4	0.72	0.65	0.32
<b>WP 4</b>									
10,602.0	91.45	268.20	7,170.6	1,008.6	-3,649.5	3,777.7	0.72	0.65	0.32
10,695.0	91.28	268.83	7,168.4	1,006.2	-3,742.4	3,868.3	0.70	-0.18	0.68
10,788.0	90.48	268.78	7,167.0	1,004.3	-3,835.4	3,958.9	0.86	-0.86	-0.05
10,881.0	89.69	269.28	7,166.8	1,002.7	-3,928.4	4,049.7	1.01	-0.85	0.54
10,975.0	88.99	269.27	7,167.9	1,001.5	-4,022.4	4,141.5	0.74	-0.74	-0.01
11,069.0	89.34	269.84	7,169.3	1,000.8	-4,116.4	4,233.5	0.71	0.37	0.61
11,163.0	89.78	270.15	7,170.0	1,000.8	-4,210.4	4,325.6	0.57	0.47	0.33
11,257.0	91.10	270.09	7,169.3	1,001.0	-4,304.3	4,417.7	1.41	1.40	-0.06
11,350.0	91.54	269.67	7,167.1	1,000.8	-4,397.3	4,508.7	0.65	0.47	-0.45
11,445.0	91.36	269.24	7,164.7	999.9	-4,492.3	4,601.6	0.49	-0.19	-0.45
11,540.0	91.71	268.95	7,162.2	998.4	-4,587.2	4,694.3	0.48	0.37	-0.31
11,634.0	91.80	269.35	7,159.3	997.0	-4,681.2	4,786.0	0.44	0.10	0.43
11,729.0	91.71	269.42	7,156.4	996.0	-4,776.1	4,878.8	0.12	-0.09	0.07
11,760.0	91.45	269.95	7,155.5	995.8	-4,807.1	4,909.2	1.90	-0.84	1.71
11,843.0	91.45	269.95	7,153.4	995.7	-4,890.1	4,990.4	0.00	0.00	0.00
<b>BHL 1980'FSL, 460'FWL, SEC.22</b>									

Checked By: \_\_\_\_\_ Approved By: \_\_\_\_\_ Date: \_\_\_\_\_