

**TEKTON WINDSOR LLC**

Diamond Valley East 1

Frontier 8

**Post Job Summary**  
**Cement Intermediate Casing**

Date Prepared: 2/15/2014  
Version: 1

Service Supervisor: LAVALLEY, LARRY

Submitted by: LANSDALE, JUSTIN

# HALLIBURTON

## Wellbore Geometry

---

Job Tubulars					MD		TVD		Excess	Shoe Joint Length
Type	Description	Size in	ID in	Wt lbm/ft	Top ft	Bottom ft	Top ft	Bottom ft	%	ft
Casing	Surface Casing	9.63	8.921	36.00	0.00	560.00				
Open Hole Section	8-3/4" Open Hole		8.750		560.00	7,645.00	560.00	7,645.00	15.00	
Casing	Intermediate Casing	7.00	6.276	26.00	0.00	7,629.00	0.00	7,629.00		42.00

# HALLIBURTON

## ***Pumping Schedule***

---

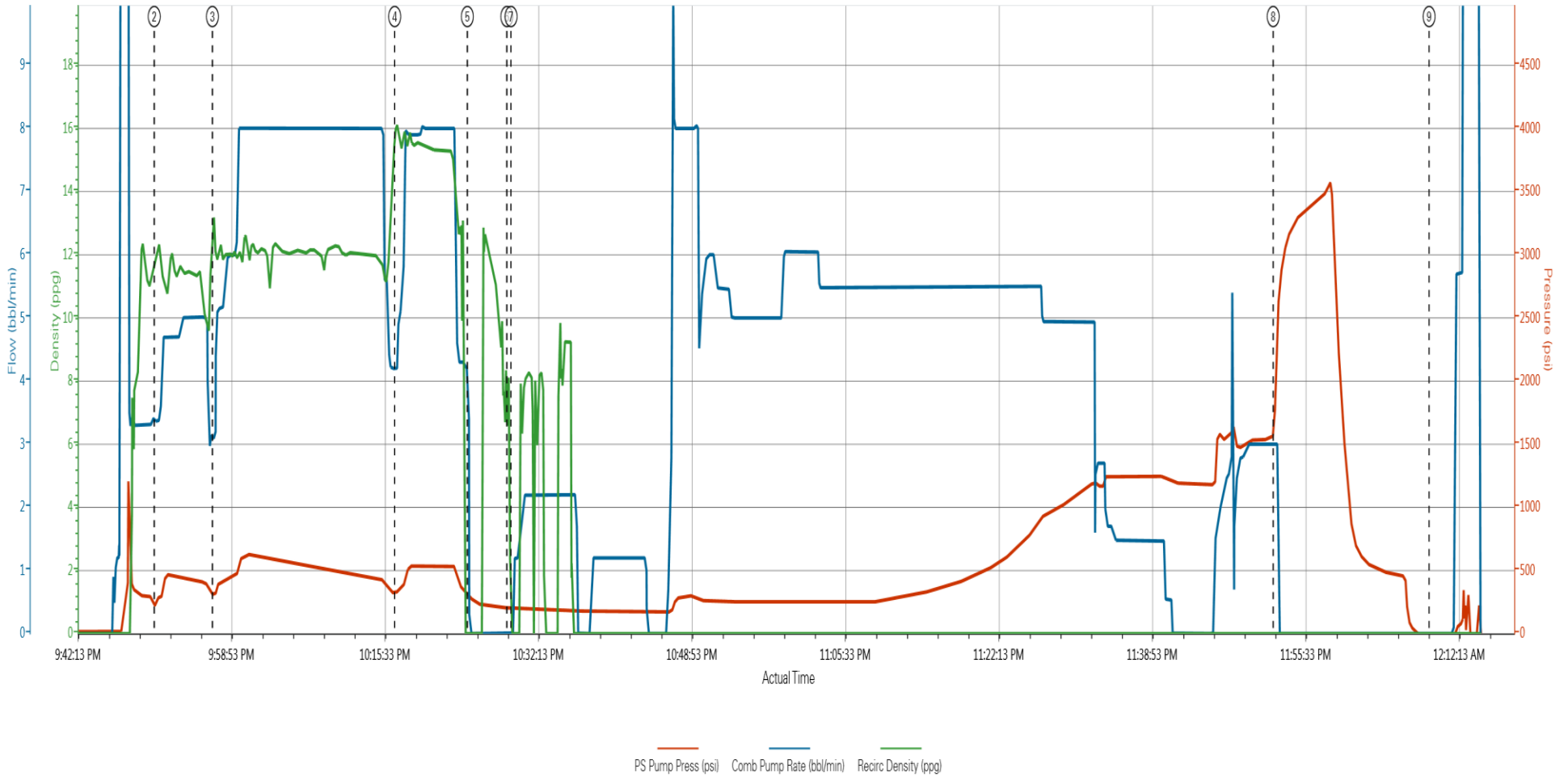
<b>Stage /Plug #</b>	<b>Fluid #</b>	<b>Fluid Type</b>	<b>Fluid Name</b>	<b>Surface Density lbm/gal</b>	<b>Avg Rate bbl/min</b>	<b>Surface Volume</b>
1	1	Spacer	Clean Spacer III 11.5ppg	10.50	5.00	30.0 bbl
1	2	Cement Slurry	EXTENDACEM B2	12.00	8.00	445.0 sacks
1	3	Cement Slurry	HalCem B1	15.80	6	170.0 sacks
1	4	Spacer	Displacement	10.10	5	290.0 bbl



# HALLIBURTON

## Data Acquisition

Custom Results



① Start Job n/a,n/a,n/a    ④ Pump Cement 330;4.2;16.12    ⑦ Pump Displacement 204;0;0  
② Pump Spacer 1 262;3.4;11.9    ⑤ Shutdown 309;0;0    ⑧ Bump Plug 1829;3;0  
③ Pump Lead Cement 307;3.1;12.87    ⑥ Drop Top Plug 205;0;8.25    ⑨ End Job -105;0;0



# HALLIBURTON

## Service Supervisor Reports

### Job Log

Date/Time	Chart #	Activity Code	Pump Rate	Cum Vol	Pump	Pressure (psig)	Comments
02/02/2014 14:00		Arrive at Location from Service Center					DID HAZARD HUNT AND ASSESSMENT OF LOCATION
02/02/2014 14:01		Wait on Customer or Customer Sub-Contractor Equip					WAIT ON REMAINDER OF CASING TO BE RAN
02/02/2014 17:45		Wait on Customer or Customer Sub-Contractor Equipm					RIG TURNED OVER TO HES
02/02/2014 20:45		Pre-Job Safety Meeting					WITH ALL 3RD PARTIES ON LOCATION
02/02/2014 20:58		Start Job					HAD PROBLEM WITH 4X4 AND 6X5 AND RIG TANK VALVE FREEZING. CORRECTED PROBLEM AND STARTED JOB
02/02/2014 21:00		Test Lines				.0	DID NOT TEST DUE TO OUTSIDE TEMP
02/02/2014 21:50		Pump Spacer 1	5	30		257.0	CLEAN SPACER MIXED @ 11.5 PPG YIELD 2.63 FT3/SK AND 15.07 GAL/SK
02/02/2014 21:57		Pump Lead Cement	8	158		307.0	445 SKS EXTENDACEM B1 MIXED @ 12.0 PPG YIELD OF 1.99 FT3/SK AND 10.64 GAL/SK
02/02/2014 22:16		Pump Tail Cement	6	46		330.0	170 SKS HALCEM B1 MIXED @ 15.8 PPG YIELD OF 1.52 FT3/SK AND 6.19 GAL/SK
02/02/2014 22:24		Shutdown					
02/02/2014 22:24		Clean Lines					
02/02/2014 22:28		Drop Top Plug					PRELOADED TOP PLUG
02/02/2014 22:29		Pump Displacement	5	290		1829.0	DRILLING MUD SUPPLIED BY RIG @ 10.1 PPG, CAUGHT CEMENT @ 150 BBLs AWAY AND SPACER RETURNED TO SURFACE @ 260 BBLs AWAY .COULD NOT GET MUD ANY FASTER THAN 5 BBL/MIN FROM RIG
02/02/2014 23:52		Bump Plug	3			2590.0	CALCULATED PRESSURE TO LAND WAS 1386 PSI
02/02/2014 23:55		Other					FLOATS HELD AND GOT 3 BBLs BACK
02/03/2014 00:09		End Job					HELD RIG DOWN SAFETY MEETING

**The Road to Excellence Starts with Safety**

<b>Sold To #:</b> 369105		<b>Ship To #:</b> 3276590		<b>Quote #:</b>		<b>Sales Order #:</b> 901086149	
<b>Customer:</b> TEKTON WINDSOR LLC				<b>Customer Rep:</b> MOSNESI, ARVID			
<b>Well Name:</b> Diamond Valley East			<b>Well #:</b> 1		<b>API/UWI #:</b> 05-123-38565		
<b>Field:</b> WATTENBERG		<b>City (SAP):</b> SEVERANCE		<b>County/Parish:</b> Weld		<b>State:</b> Colorado	
<b>Legal Description:</b> Section 23 Township 6N Range 67W							
<b>Lat:</b> N 40.467 deg. OR N 40 deg. 28 min. 2.64 secs.				<b>Long:</b> W 104.87 deg. OR W -105 deg. 7 min. 48.684 secs.			
<b>Contractor:</b> Frontier			<b>Rig/Platform Name/Num:</b> Frontier8				
<b>Job Purpose:</b> Cement Intermediate Casing							
<b>Well Type:</b> Development Well				<b>Job Type:</b> Cement Intermediate Casing			
<b>Sales Person:</b> GROFF, THEODORE			<b>Srvc Supervisor:</b> LAVALLEY, LARRY			<b>MBU ID Emp #:</b> 419296	

**Job Personnel**

HES Emp Name	Exp Hrs	Emp #	HES Emp Name	Exp Hrs	Emp #	HES Emp Name	Exp Hrs	Emp #
BROOM, KENDALL L	0.0	524682	LAVALLEY, LARRY P	0.0	419296	MILLS, CHUCK	0.0	123456
NESBITT, ROY Iverson	0.0	537416	VIATOR, JASON R.	0.0	550394			

**Equipment**

HES Unit #	Distance-1 way	HES Unit #	Distance-1 way	HES Unit #	Distance-1 way	HES Unit #	Distance-1 way
10822531C	35 mile	10866493C	35 mile	11019824	35 mile	11488570C	35 mile
11518549	35 mile	11633848	35 mile	11645065	35 mile		

**Job**

**Job Times**

Formation Name	Top	Bottom	Called Out	Date	Time	Time Zone	
<b>Formation Depth (MD)</b>				02 - Feb - 2014	09:30	MST	
<b>Form Type</b>		BHST	<b>On Location</b>	02 - Feb - 2014	14:00	MST	
<b>Job depth MD</b>	7645. ft	<b>Job Depth TVD</b>	7645. ft	<b>Job Started</b>	02 - Feb - 2014	21:00	MST
<b>Water Depth</b>		<b>Wk Ht Above Floor</b>	6. ft	<b>Job Completed</b>	03 - Feb - 2014	00:10	MST
<b>Perforation Depth (MD)</b>	<i>From</i>	<i>To</i>	<b>Departed Loc</b>	03 - Feb - 2014	01:30	MST	

**Well Data**

Description	New / Used	Max pressure psig	Size in	ID in	Weight lbm/ft	Thread	Grade	Top MD ft	Bottom MD ft	Top TVD ft	Bottom TVD ft
8-3/4" Open Hole				8.75				560.	7645.	560.	7645.
Intermediate Casing	Unknown		7.	6.276	26.			.	7629.	.	7629.
Surface Casing	Unknown		9.625	8.921	36.			.	560.		

**Sales/Rental/3<sup>rd</sup> Party (HES)**

Description	Qty	Qty uom	Depth	Supplier
SHOE,FLT,7 8RD,2-3/4 SS II VLV	1	EA		
Description	Qty	Qty uom	Depth	Supplier
CLR,FLT,7 8RD 17-26PPF,2-3/4SSII	1	EA		
CTRZR ASSY,API,7 CSG X 8 3/4HOLE,HNGD	100	EA		
CENTRALISER SLIDER II,#0700-0834S	20	EA		
CLAMP - LIMIT - 7 - HINGED -	1	EA		
KIT,HALL WELD-A	1	EA		

PLUG,CMTG, TOP,7,HWE,5.66 MIN/6.54 MAX CS						1	EA		
PLUG,CMTG,BOT,7,HWE,5.66 MIN/6.54 MAX CS						1	EA		
Fluid Data									
Stage/Plug #: 1									
Fluid #	Stage Type	Fluid Name	Qty	Qty uom	Mixing Density lbm/gal	Yield ft <sup>3</sup> /sk	Mix Fluid Gal/sk	Rate bbl/min	Total Mix Fluid Gal/sk
1	Clean Spacer III 11.5ppg		30.00	bbl	10.5	.0	42.0	5.0	
2	EXTENDACEM B2	EXTENDACEM (TM) SYSTEM (452981)	445.0	sacks	12.	1.99	10.64	8.0	10.64
10.64 Gal		FRESH WATER							
3	HalCem B1	HALCEM (TM) SYSTEM (452986)	170.0	sacks	15.8	1.52	6.19	8.0	6.19
6.19 Gal		FRESH WATER							
4	Displacement		290.00	bbl	10.1	.0	42.0	8.0	
Rates									
Circulating		Mixing		Displacement		Avg. Job			
Cement Left In Pipe		Amount	42 ft	Reason	Shoe Joint				
Frac Ring # 1 @	ID	Frac ring # 2 @	ID	Frac Ring # 3 @	ID	Frac Ring # 4 @	ID		
The Information Stated Herein Is Correct				Customer Representative Signature					

