

TEKTON WINDSOR LLC  
640 PLAZA DRIVE STE 290  
HIGHLANDS RANCH, Colorado

Diamond Valley East 1

**FRONTIER 8**

## **Post Job Summary** **Cement Surface Casing**

Date Prepared: 1/30/2014  
Version: 1

Service Supervisor: BARRAS, JOSEPH

Submitted by: LANSDALE, JUSTIN

**HALLIBURTON**

# HALLIBURTON

## Wellbore Geometry

---

Job Tubulars					MD		Excess	Shoe Joint Length
Type	Description	Size in	ID in	Wt lbm/ft	Top ft	Bottom ft	%	ft
Open Hole Section	12-1/4" Open Hole		12.250		80.00	570.00	30.00	
Casing	Surface Casing	9.63	8.921	36.00	0.00	570.00		20.00
Casing	15" CONDUCTOR	16.00	15.010	84.00	0.00	80.00		

# HALLIBURTON

## ***Pumping Schedule***

---

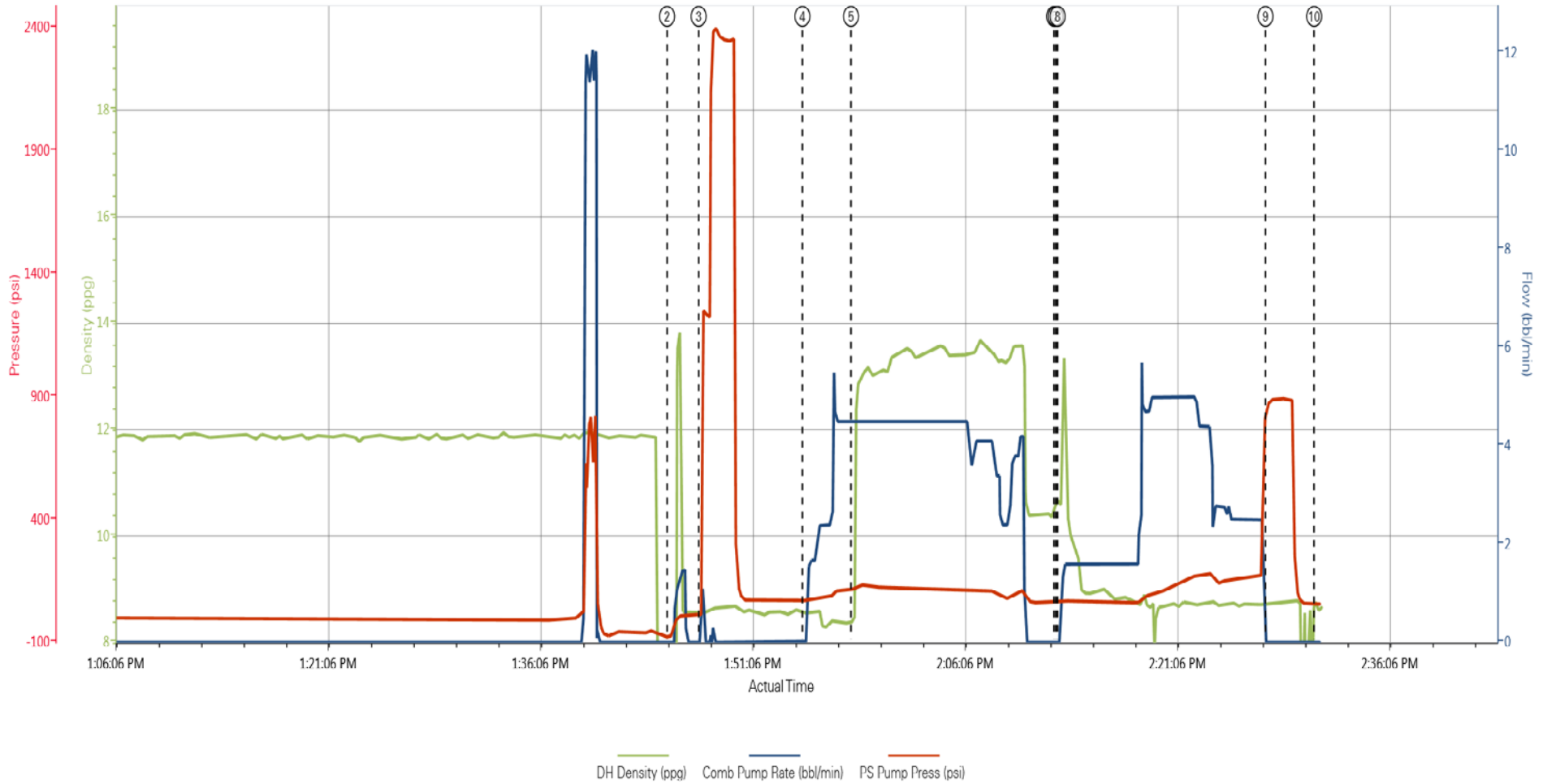
<b>Stage /Plug #</b>	<b>Fluid #</b>	<b>Fluid Type</b>	<b>Fluid Name</b>	<b>Surface Density lbm/gal</b>	<b>Avg Rate bbl/min</b>	<b>Surface Volume</b>
1	1	Spacer	Fresh Water Spacer	8.33	4	10 bbl
1	2	Cement Slurry	SwiftCem B2	13.40	4.5	145.0 sacks
1	3	Displacement	Fresh Water	8.33	4	40 bbl



# HALLIBURTON

## Data Acquisition

Job Graph



- ① Pause n/a,n/a;n/a    ④ Pump Spacer 1 8.57,0,72    ⑦ Drop Top Plug 10.65,0,65    ⑩ End Job 8.57,0,59
- ② Start Job 2.94,0,-78    ⑤ Pump Cement 8.38,4.5,118    ⑧ Pump Displacement 10.59,0,65
- ③ Test Lines 8.56,0,17    ⑥ Shutdown 10.7,0,65    ⑨ Bump Plug 8.75,0,871

# HALLIBURTON

## Service Supervisor Reports

### Job Log

Date/Time	Chart #	Activity Code	Pump Rate	Cum Vol	Pump	Pressure (psig)	Comments
01/02/2014 08:30		Arrive at Location from Service Center					rig running casing
01/02/2014 09:10		Rig-Up Equipment					move HES into position for job
01/02/2014 10:15		Rig-Up Completed					
01/02/2014 13:05		Safety Meeting - Pre Job					with HES and rig crew
01/02/2014 13:45		Start Job					
01/02/2014 13:47		Test Lines					test lines to 2500 with no visible leaks
01/02/2014 13:54		Pump Spacer 1	4	10		117.0	rig water
01/02/2014 13:58		Pump Cement	4.5	46		120.0	mixed with rig water @ 13.4 ppg /145 sks of swift cem 1.78 yield / 9.49 gal/sk
01/02/2014 14:12		Shutdown					
01/02/2014 14:12		Drop Top Plug					prloaded and witnessed by companyman
01/02/2014 14:15		Pump Displacement	4	40		174.0	rig water with cement to surface @ 30 bbl into displacing
01/02/2014 14:27		Bump Plug	2			881.0	
01/02/2014 14:28		Check Floats					held with 1 bbl back
01/02/2014 14:30		End Job					DID NOT HAVE TO TOP OUT
01/02/2014 14:40		Rig-Down Equipment					
01/02/2014 15:30		Return to Service Center from Job					

*The Road to Excellence Starts with Safety*

<b>Sold To #:</b> 369105		<b>Ship To #:</b> 3276590		<b>Quote #:</b>		<b>Sales Order #:</b> 901013050					
<b>Customer:</b> TEKTON WINDSOR LLC				<b>Customer Rep:</b> MOSNESI, ARVID							
<b>Well Name:</b> Diamond Valley East		<b>Well #:</b> 1		<b>API/UWI #:</b> 05-123-38565							
<b>Field:</b> WATTENBERG		<b>City (SAP):</b> SEVERANCE		<b>County/Parish:</b> Weld		<b>State:</b> Colorado					
<b>Legal Description:</b> Section 23 Township 6N Range 67W											
<b>Lat:</b> N 40.467 deg. OR N 40 deg. 28 min. 2.64 secs.				<b>Long:</b> W 104.87 deg. OR W -105 deg. 7 min. 48.684 secs.							
<b>Job Purpose:</b> Cement Surface Casing											
<b>Well Type:</b> Development Well				<b>Job Type:</b> Cement Surface Casing							
<b>Sales Person:</b> GROFF, THEODORE			<b>Srvc Supervisor:</b> BARRAS, JOSEPH			<b>MBU ID Emp #:</b> 405168					
<b>Job Personnel</b>											
<b>HES Emp Name</b>	<b>Exp Hrs</b>	<b>Emp #</b>	<b>HES Emp Name</b>	<b>Exp Hrs</b>	<b>Emp #</b>	<b>HES Emp Name</b>	<b>Exp Hrs</b>	<b>Emp #</b>			
BANUELOS, GUADALUPE	0.0	372277	BARRAS, JOSEPH Corey	0.0	405168	HARRAH, THADDEUS Gregory	0.0	552592			
<b>Equipment</b>											
<b>HES Unit #</b>	<i>Distance-1 way</i>	<b>HES Unit #</b>	<i>Distance-1 way</i>	<b>HES Unit #</b>	<i>Distance-1 way</i>	<b>HES Unit #</b>	<i>Distance-1 way</i>				
10248053C	36 mile	11410470C	36 mile								
<b>Job</b>				<b>Job Times</b>							
<b>Formation Name</b>				<b>Date</b>		<b>Time</b>	<b>Time Zone</b>				
<b>Formation Depth (MD)</b>		<b>Top</b>	<b>Bottom</b>	<b>Called Out</b>	02 - Jan - 2014	03:30	MST				
<b>Form Type</b>		BHST		<b>On Location</b>							
<b>Job depth MD</b>		559. ft	<b>Job Depth TVD</b>	559. ft	<b>Job Started</b>	02 - Jan - 2014	13:45	MST			
<b>Water Depth</b>		<b>Wk Ht Above Floor</b>		4. ft	<b>Job Completed</b>	02 - Jan - 2014	14:30	GMT			
<b>Perforation Depth (MD)</b>		<i>From</i>	<i>To</i>	<b>Departed Loc</b>	02 - Jan - 2014	15:30	MST				
<b>Well Data</b>											
<i>Description</i>	<b>New / Used</b>	<b>Max pressure psig</b>	<b>Size in</b>	<b>ID in</b>	<b>Weight lbm/ft</b>	<b>Thread</b>	<b>Grade</b>	<b>Top MD ft</b>	<b>Bottom MD ft</b>	<b>Top TVD ft</b>	<b>Bottom TVD ft</b>
12-1/4" Open Hole				12.25				80.	570.		
15" CONDUCTOR	Unknown		16.	15.01	84.			.	80.		
Surface Casing	Unknown		9.625	8.921	36.			.	570.		
<b>Sales/Rental/3<sup>rd</sup> Party (HES)</b>											
<b>Description</b>				<b>Qty</b>	<b>Qty uom</b>	<b>Depth</b>	<b>Supplier</b>				
CENTRALIZER-9-5/8"-CSG-12 1/4"-HINGED				5	EA						
CLR,FLT,9-5/8 8RD 29.3-40PPF,2-3/4				1	EA						
SHOE,GID,9-5/8 8RD				1	EA						
KIT,HALL WELD-A				1	EA						
<b>Description</b>				<b>Qty</b>	<b>Qty uom</b>	<b>Depth</b>	<b>Supplier</b>				
COLLAR-STOP-9 5/8"-FRICTION-HINGED				1	EA						
PLUG,CMTG,TOP,9 5/8,HWE,8.16 MIN/9.06 MA				1	EA						
MILEAGE FOR CEMENTING CREW,ZI				60	MI						
BASKET - CEMENT - 9-5/8 CSG X 12-1/4				2	EA						
COLLAR-STOP-9 5/8"-FRICTION-HINGED				4	EA						

Fluid Data										
Stage/Plug #: 1										
Fluid #	Stage Type	Fluid Name	Qty	Qty uom	Mixing Density lbm/gal	Yield ft <sup>3</sup> /sk	Mix Fluid Gal/sk	Rate bbl/min	Total Mix Fluid Gal/sk	
1	Fresh Water Spacer			bbl	8.33			4		
2	SwiftCem B2	SWIFTCEM (TM) SYSTEM (452990)	145.0	sacks	13.4	1.79	9.52	4.5	9.52	
	9.52 Gal	FRESH WATER								
3	Displacement			bbl	.	.0	.0	4		
	94 lbm	CMT - PREMIUM - CLASS G REG OR TYPE V, BULK (100003685)								
	5 Gal	FRESH WATER								
Rates										
Circulating		Mixing		Displacement			Avg. Job			
Cement Left In Pipe		Amount	20 ft	Reason	Shoe Joint					
Frac Ring # 1 @	ID	Frac ring # 2 @	ID	Frac Ring # 3 @	ID	Frac Ring # 4 @	ID			
The Information Stated Herein Is Correct				Customer Representative Signature						

