



A Schlumberger Company

COMPANY : TEKTON WINDSOR LLC

WELL : DIAMOND VALLEY EAST #1

FIELD : WATTENBERG

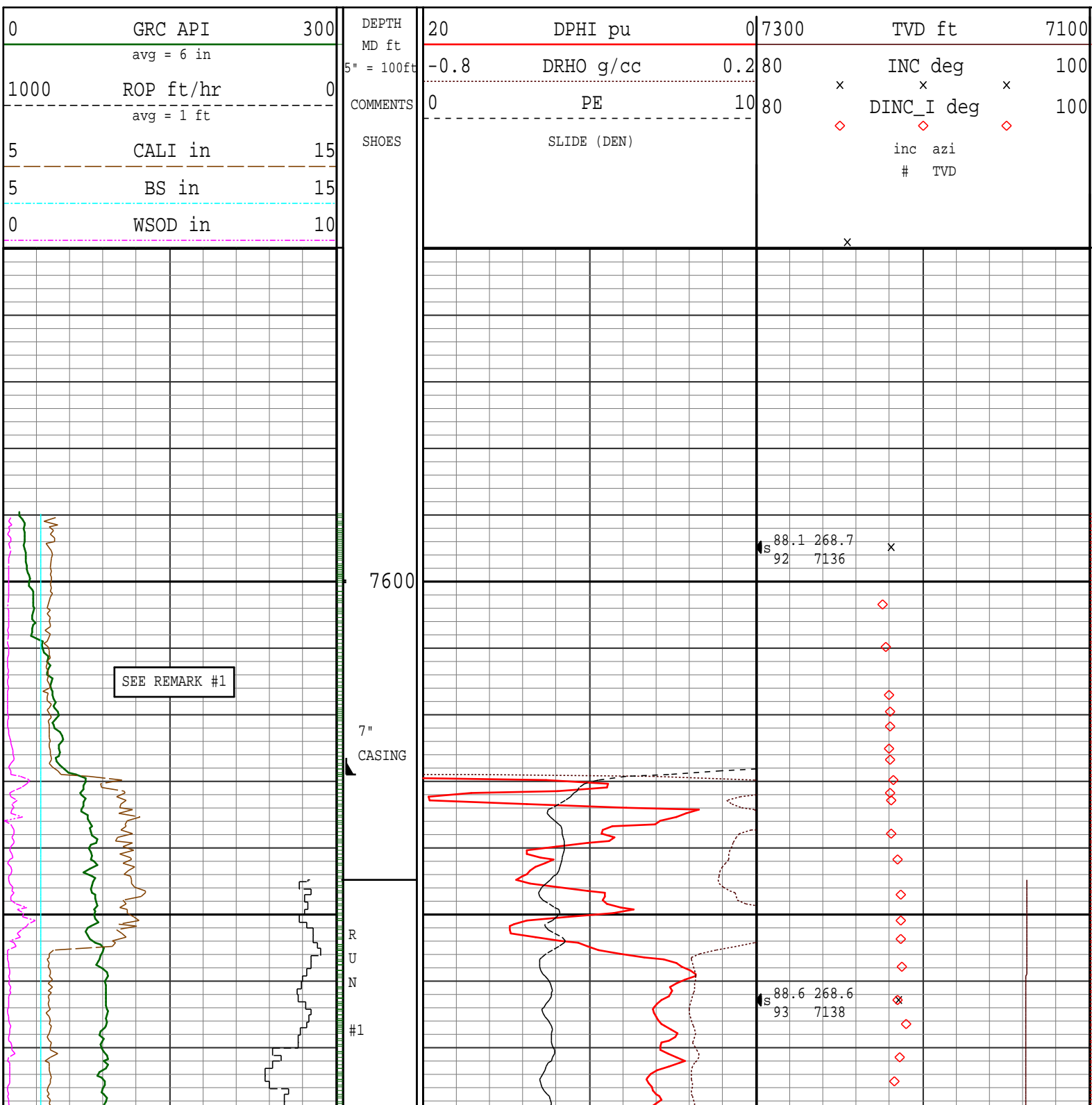
REMARKS:

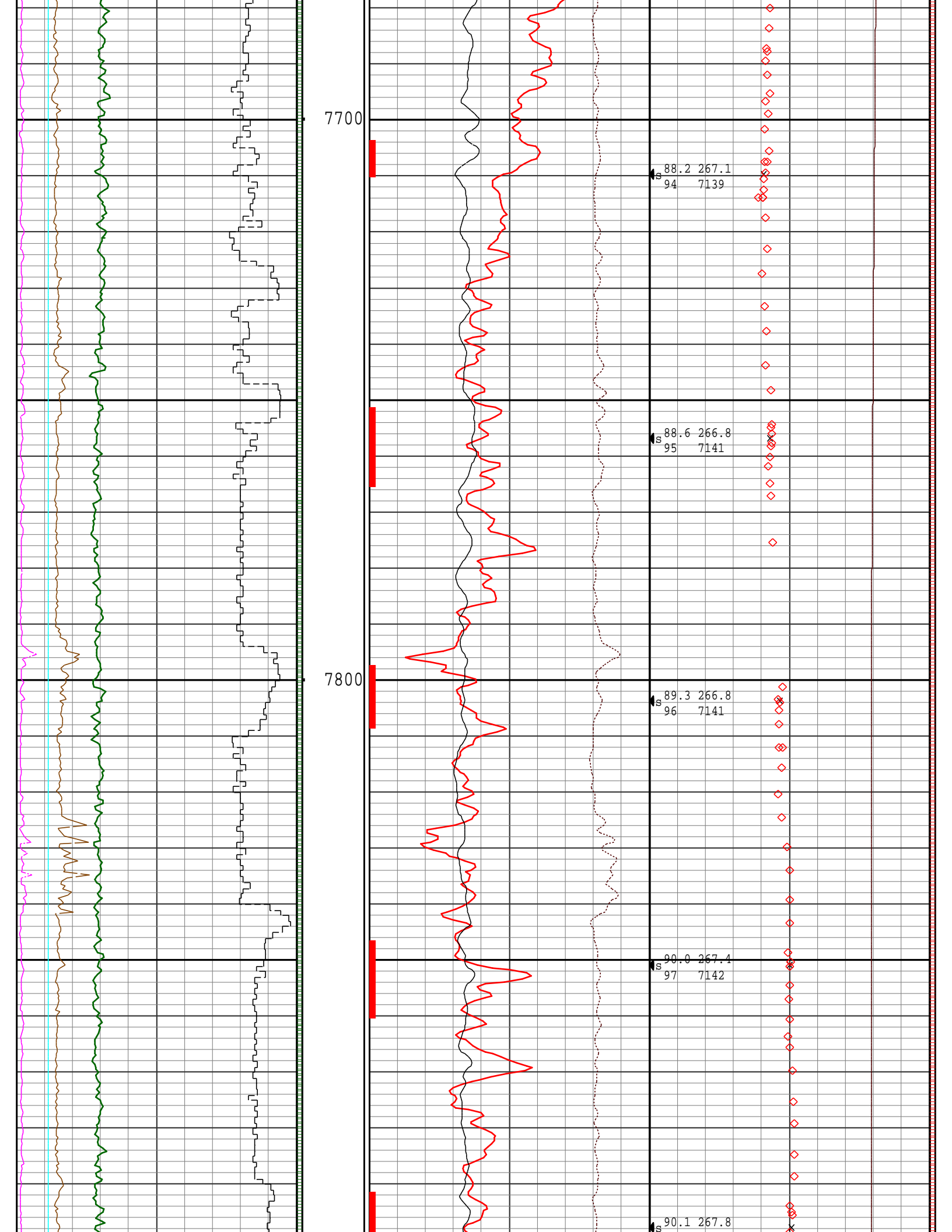
NOTICE - All interpretations are opinions based on inferences from electrical or other measurements and we do not guarantee the accuracy or correctness of any interpretations. We shall not, except in the case of gross or wilful negligence on our part, be liable or responsible for loss, costs, damages or expenses incurred or sustained by anyone as a result of any interpretations made by one of our officers, agents or employees. These interpretations are also subject to our General Terms and Conditions as set out in our current Price Schedule.

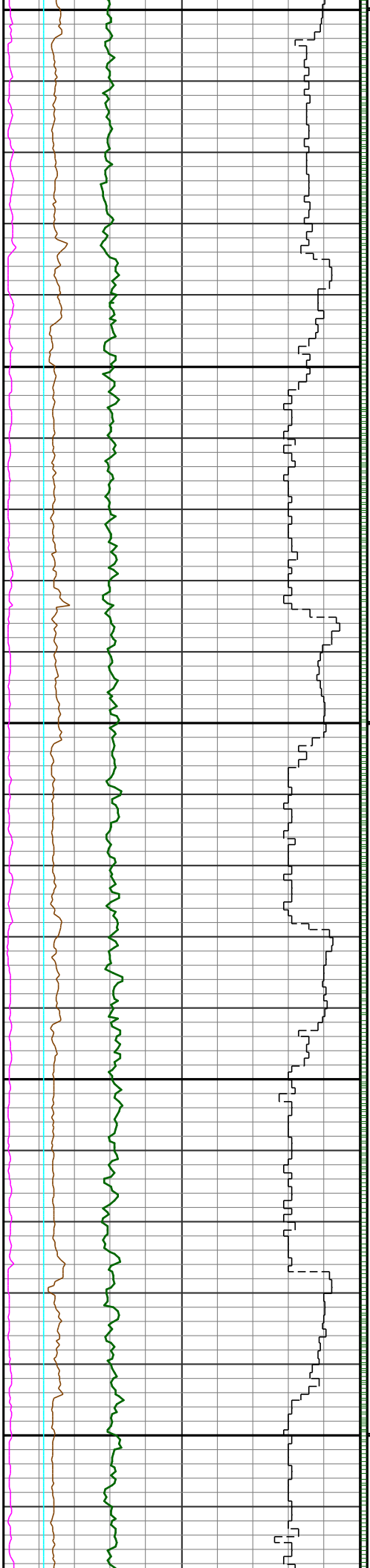
PATHFINDER - A Schlumberger Company

Version No : RX5 V6.05 Release 20Sep2013

Plot Time : 10-Feb-2014 07:26



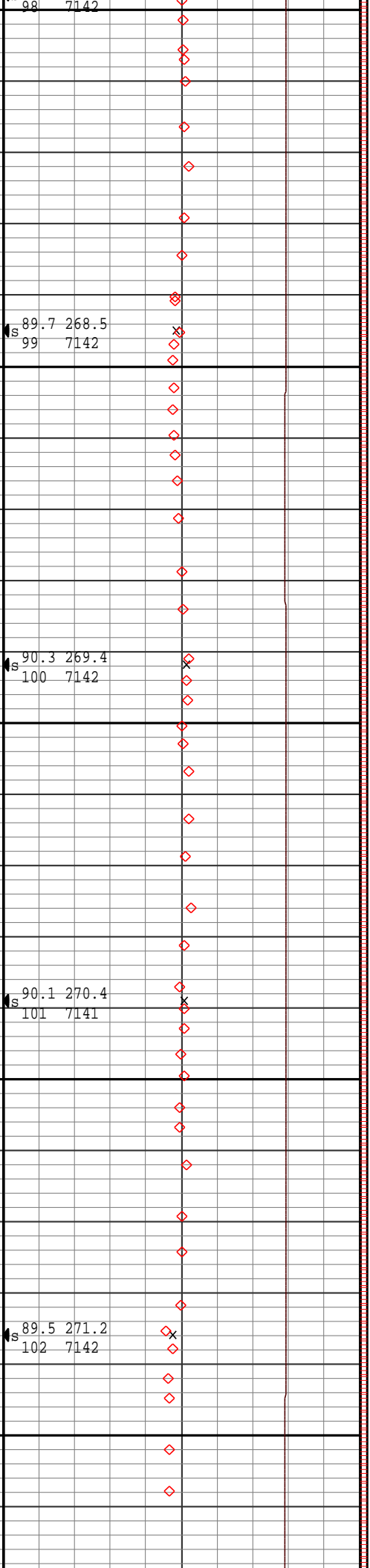
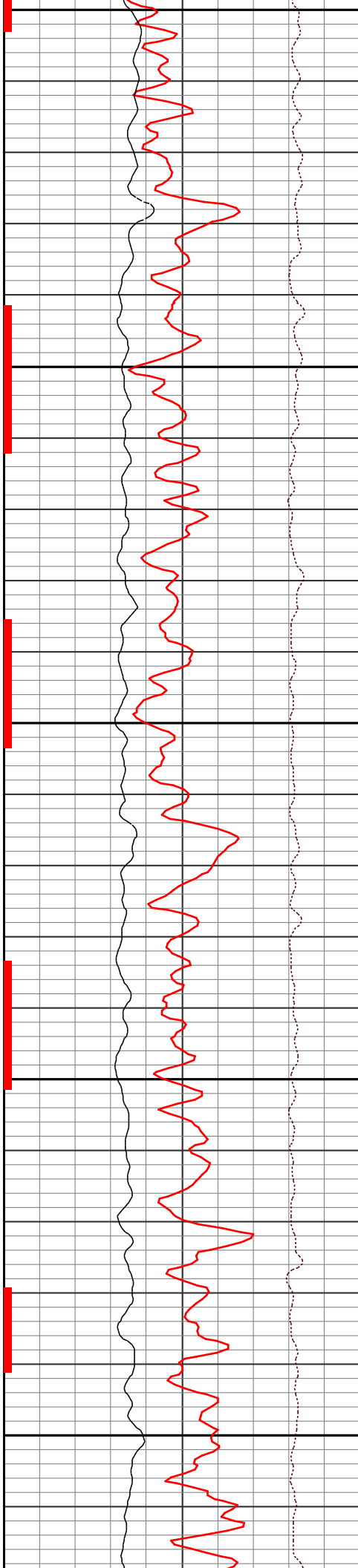




7900

8000

8100



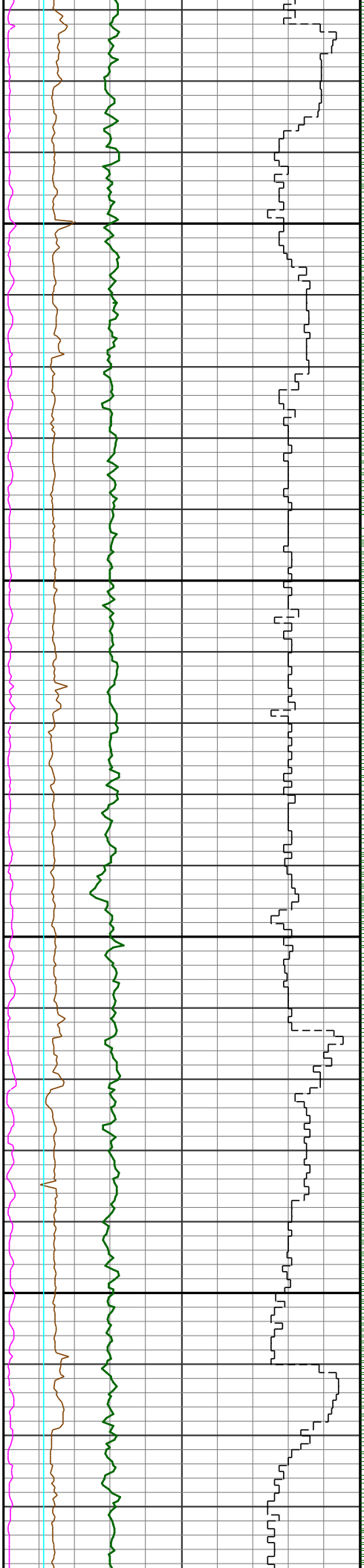
98 7142

89.7 268.5
99 7142

90.3 269.4
100 7142

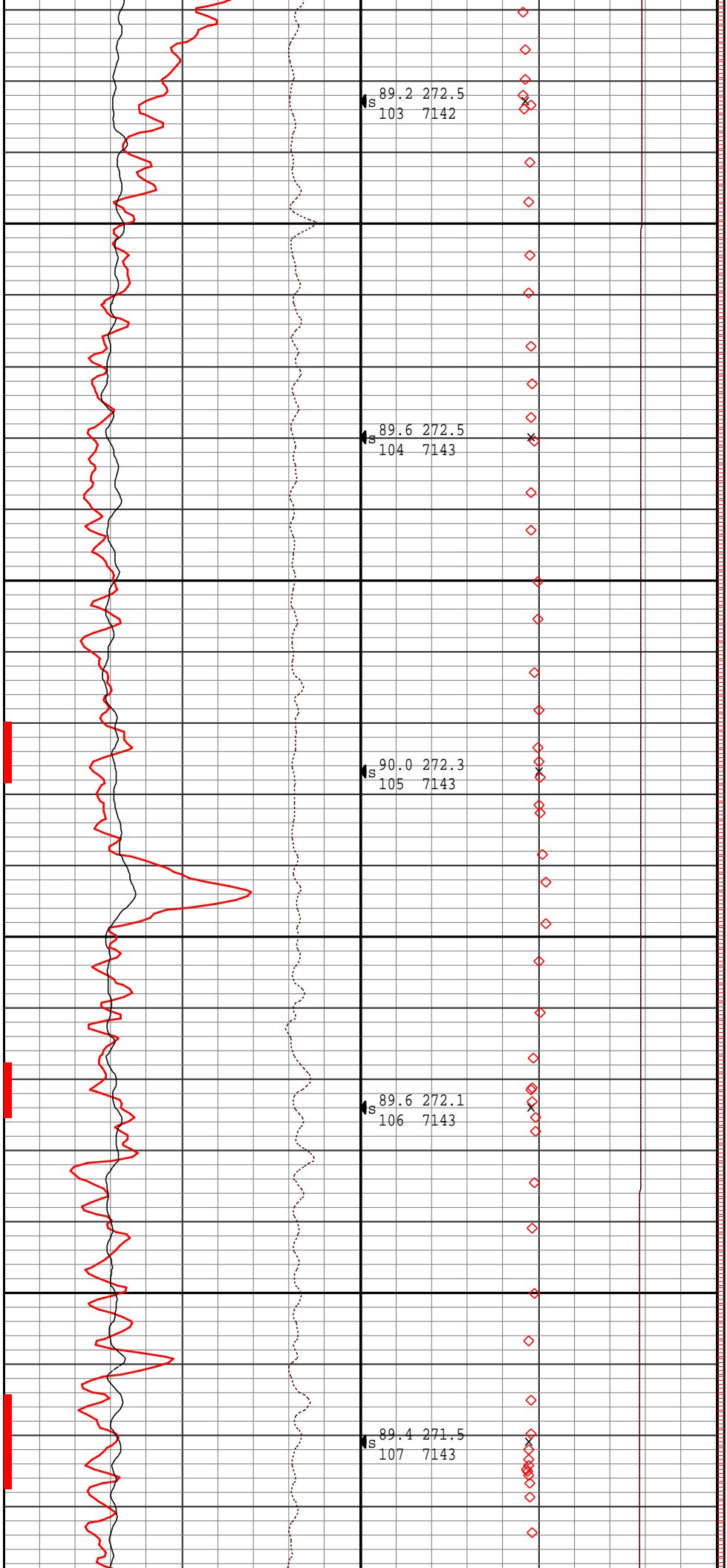
90.1 270.4
101 7141

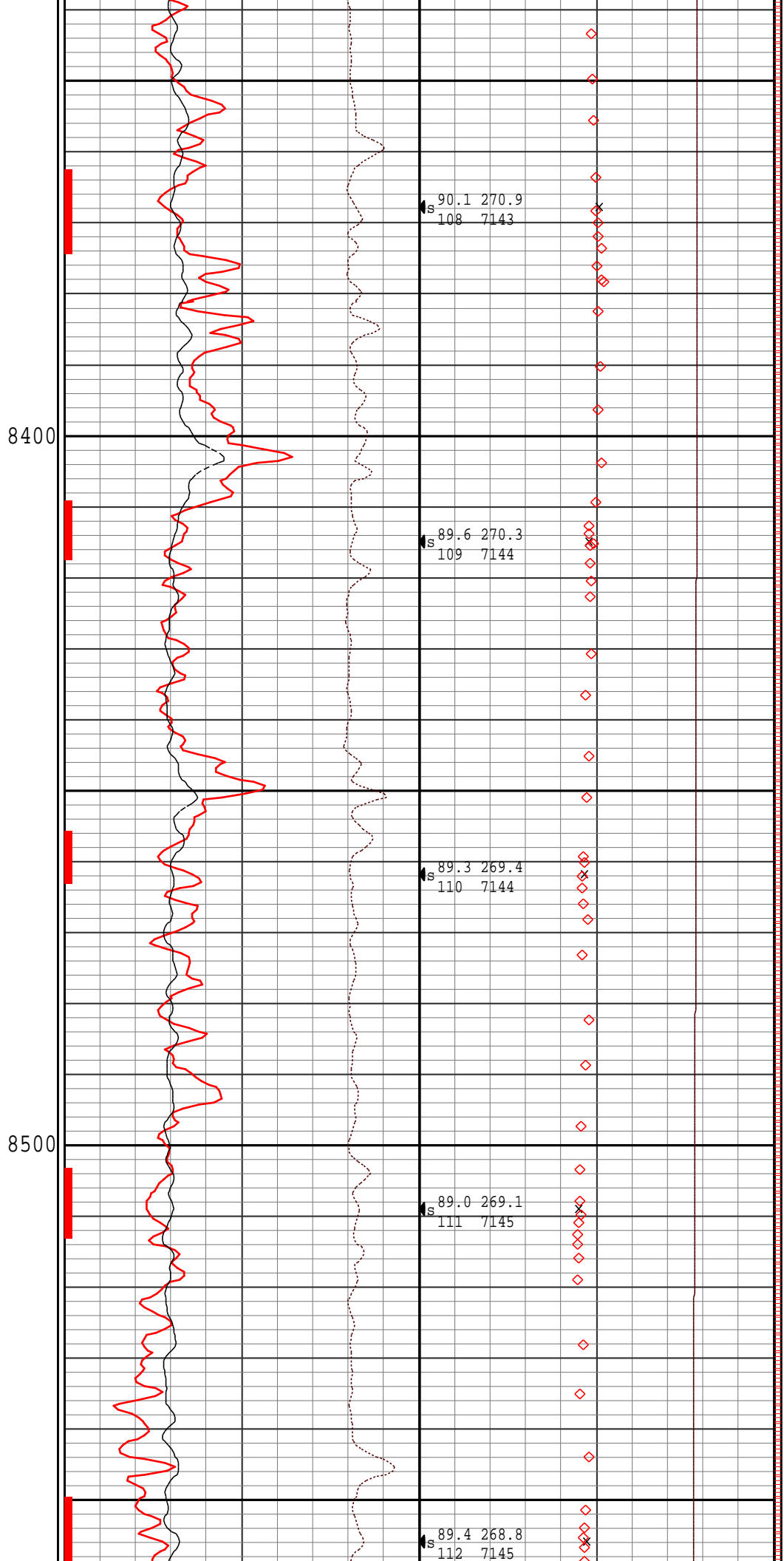
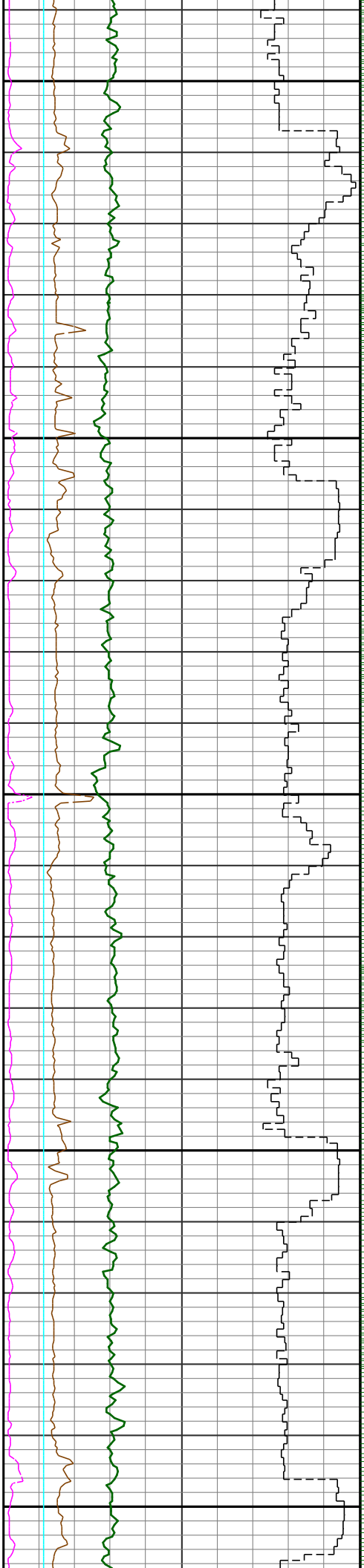
89.5 271.2
102 7142

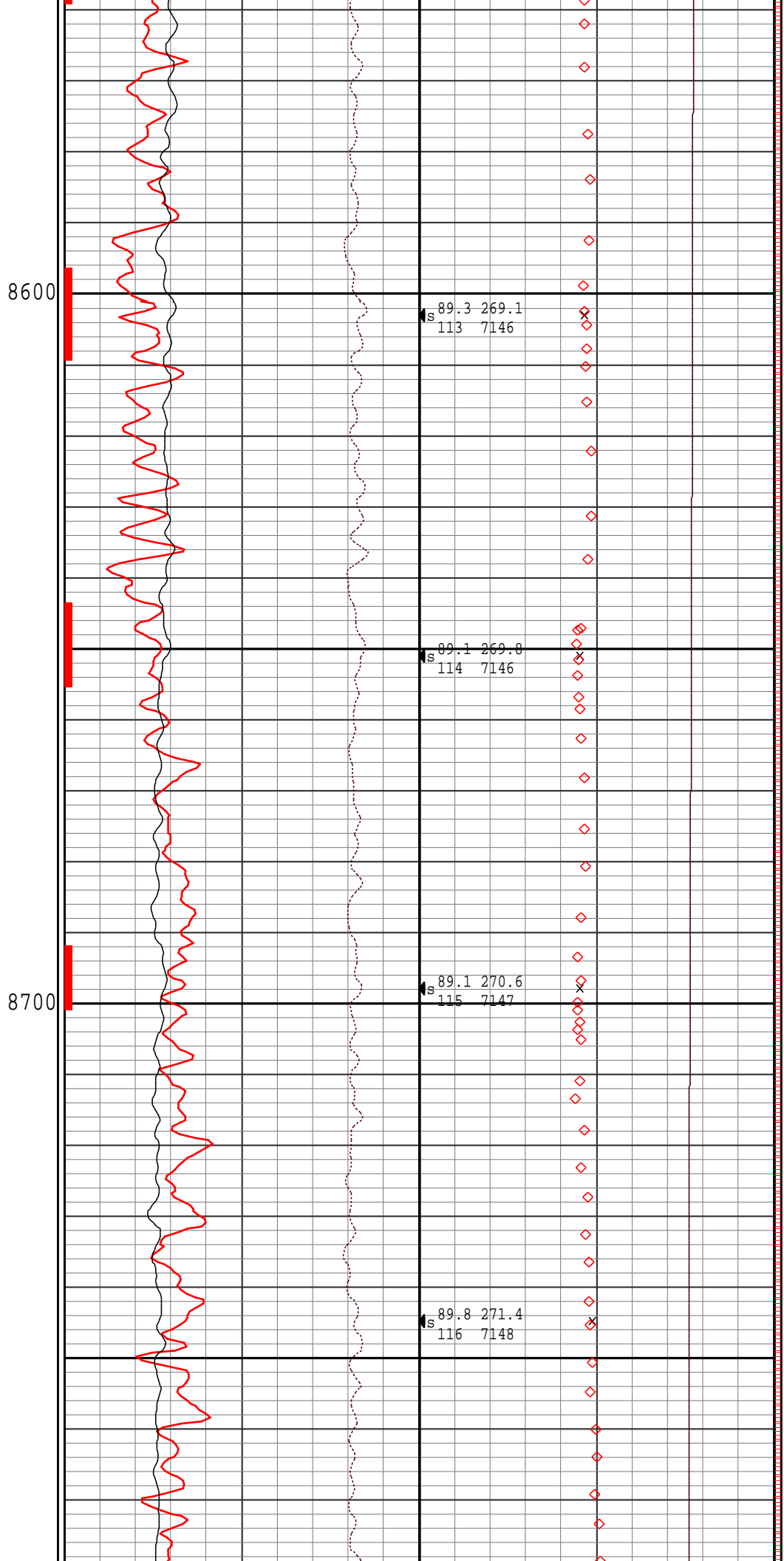
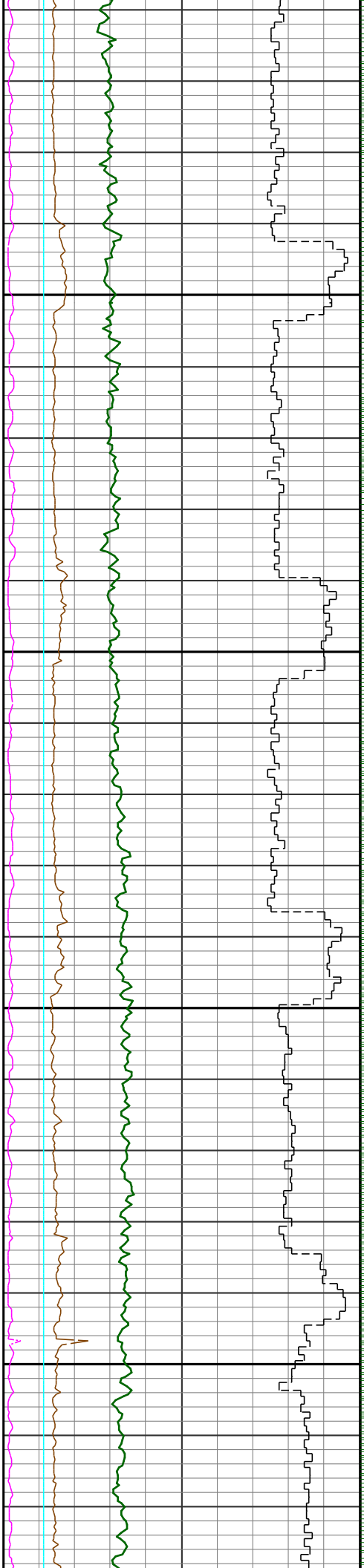


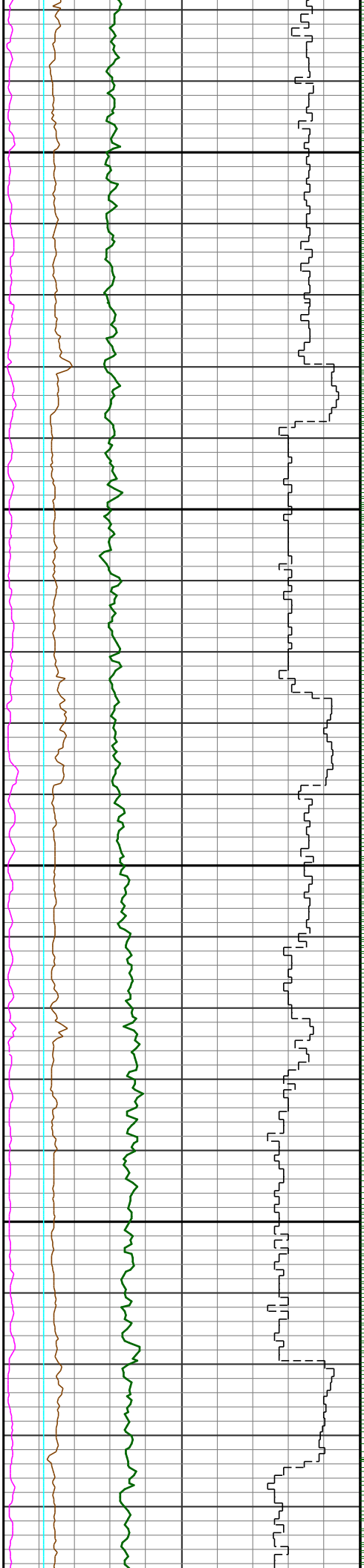
8200

8300



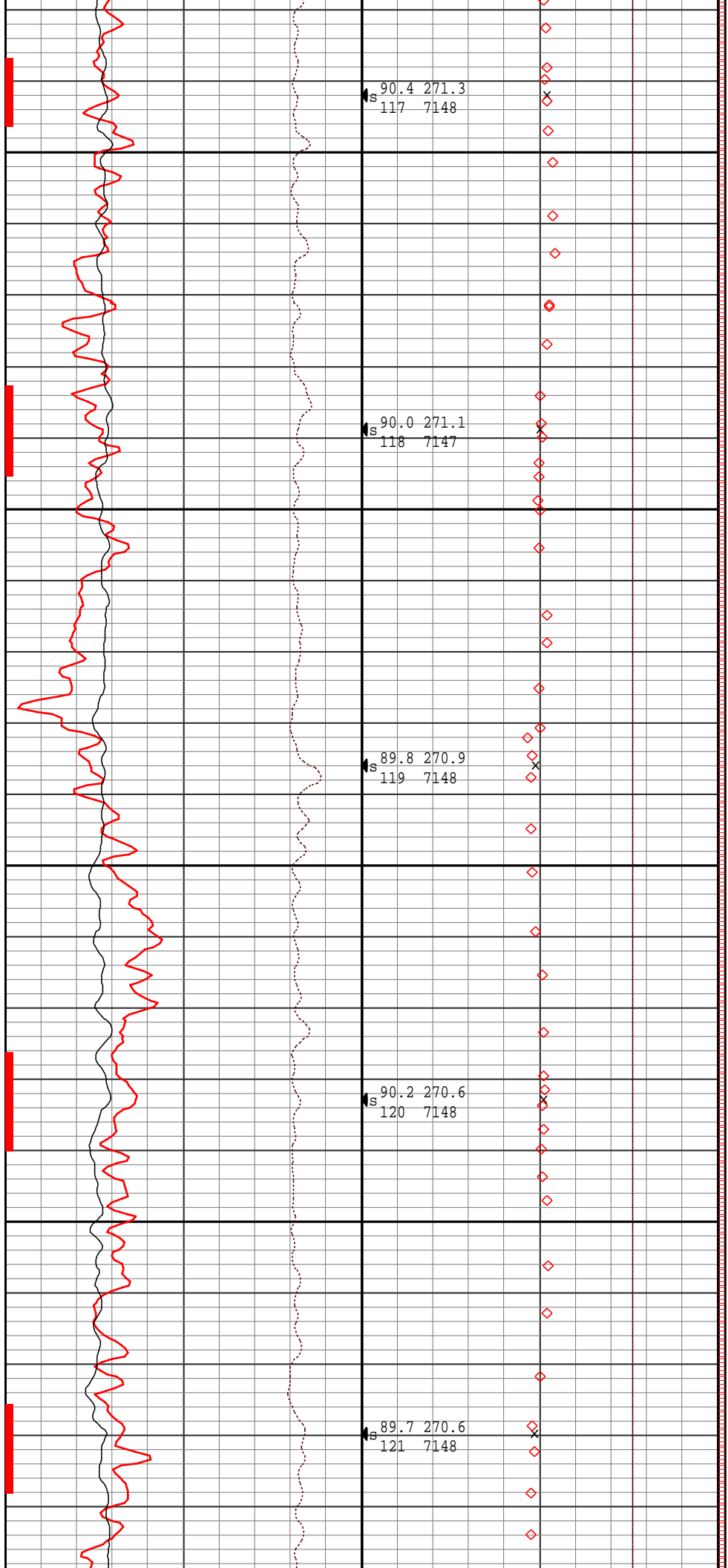






8800

8900



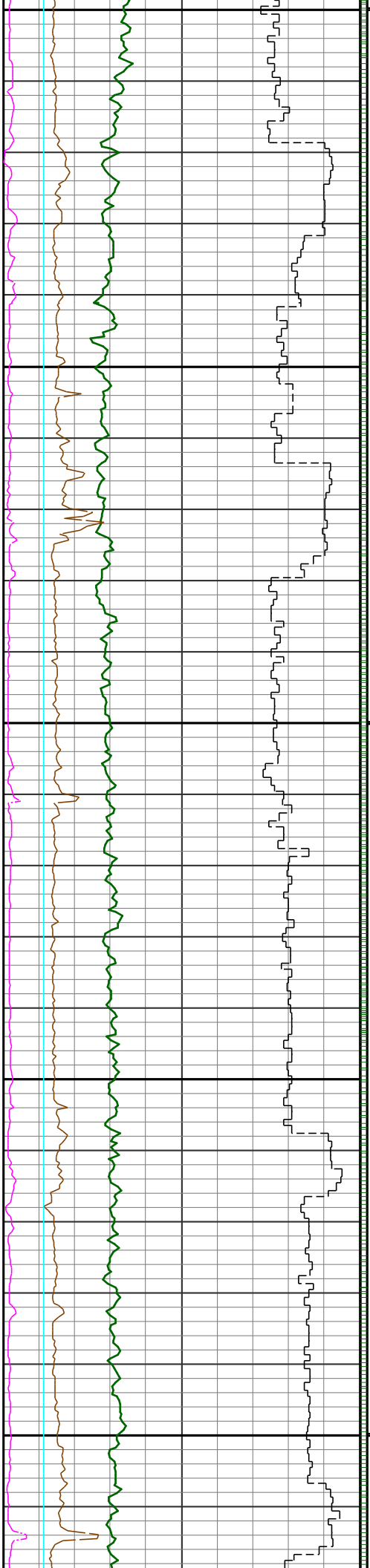
s
90.4 271.3
117 7148

s
90.0 271.1
118 7147

s
89.8 270.9
119 7148

s
90.2 270.6
120 7148

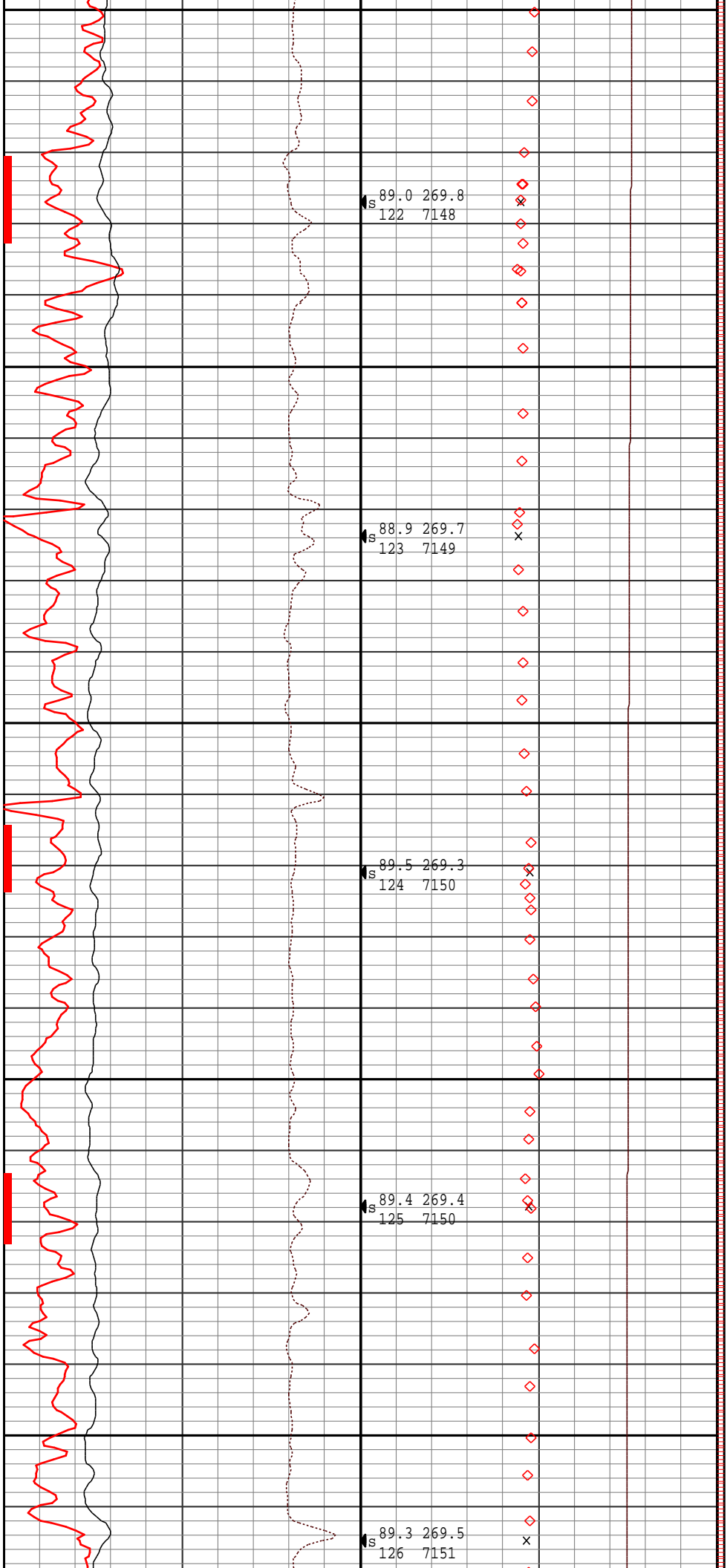
s
89.7 270.6
121 7148

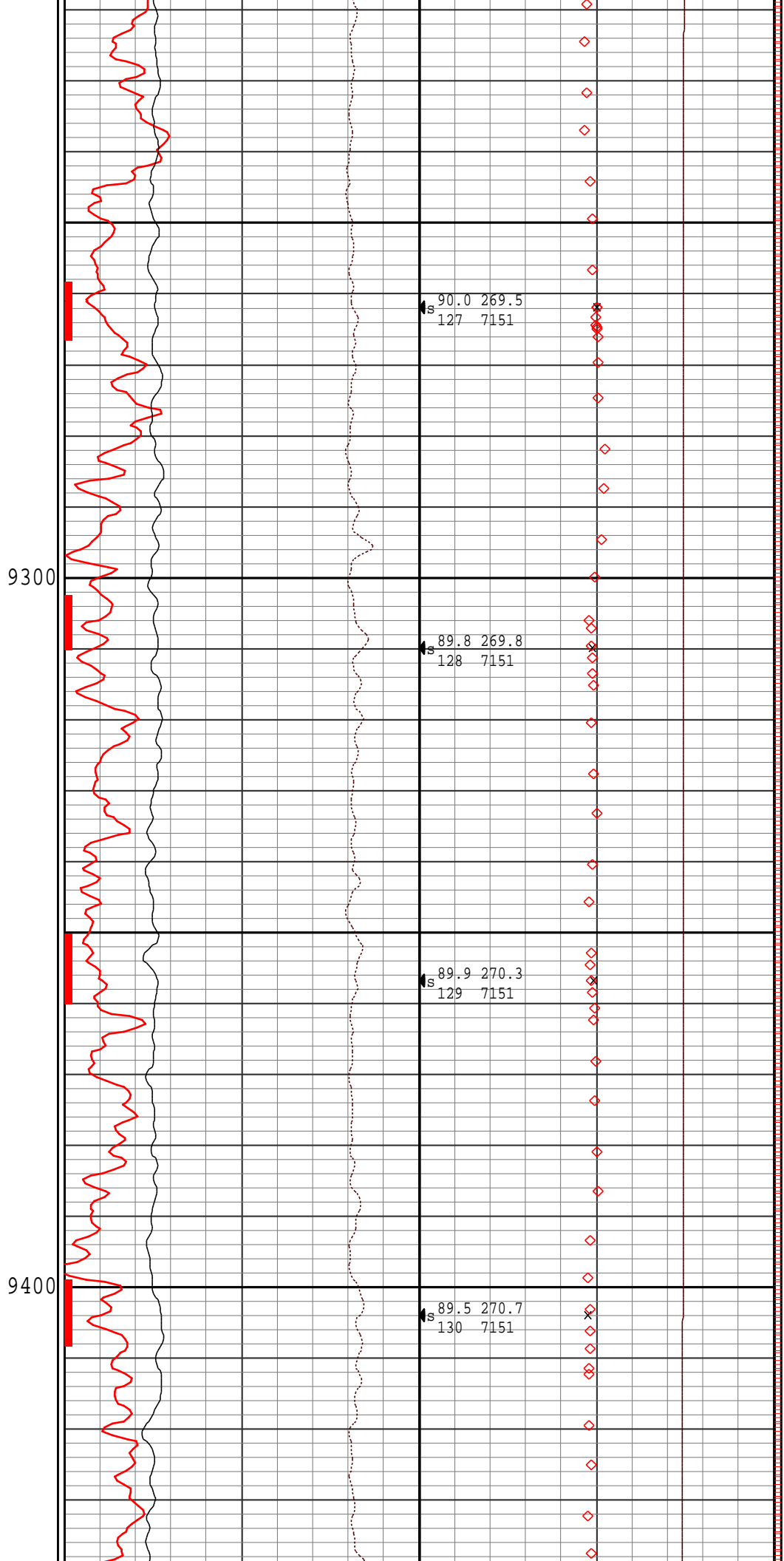
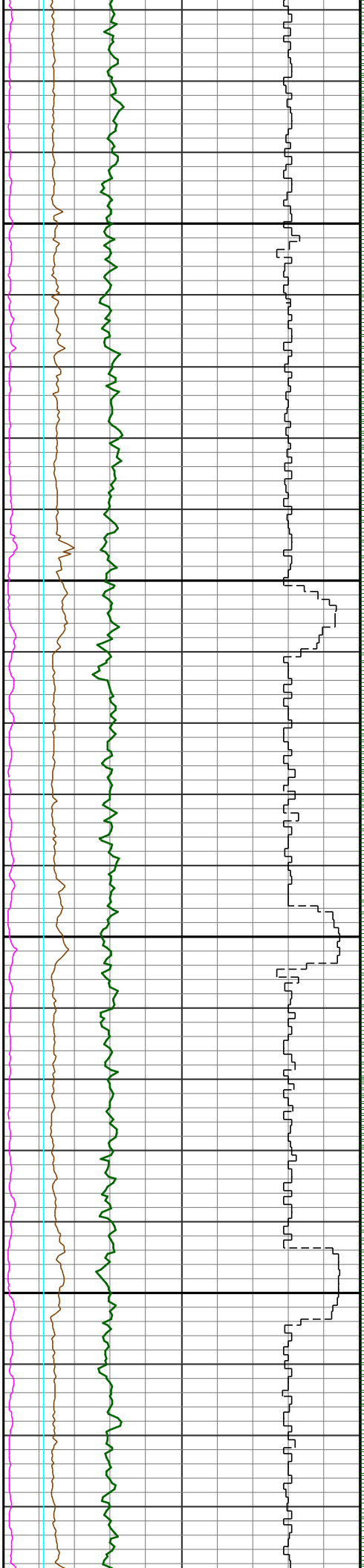


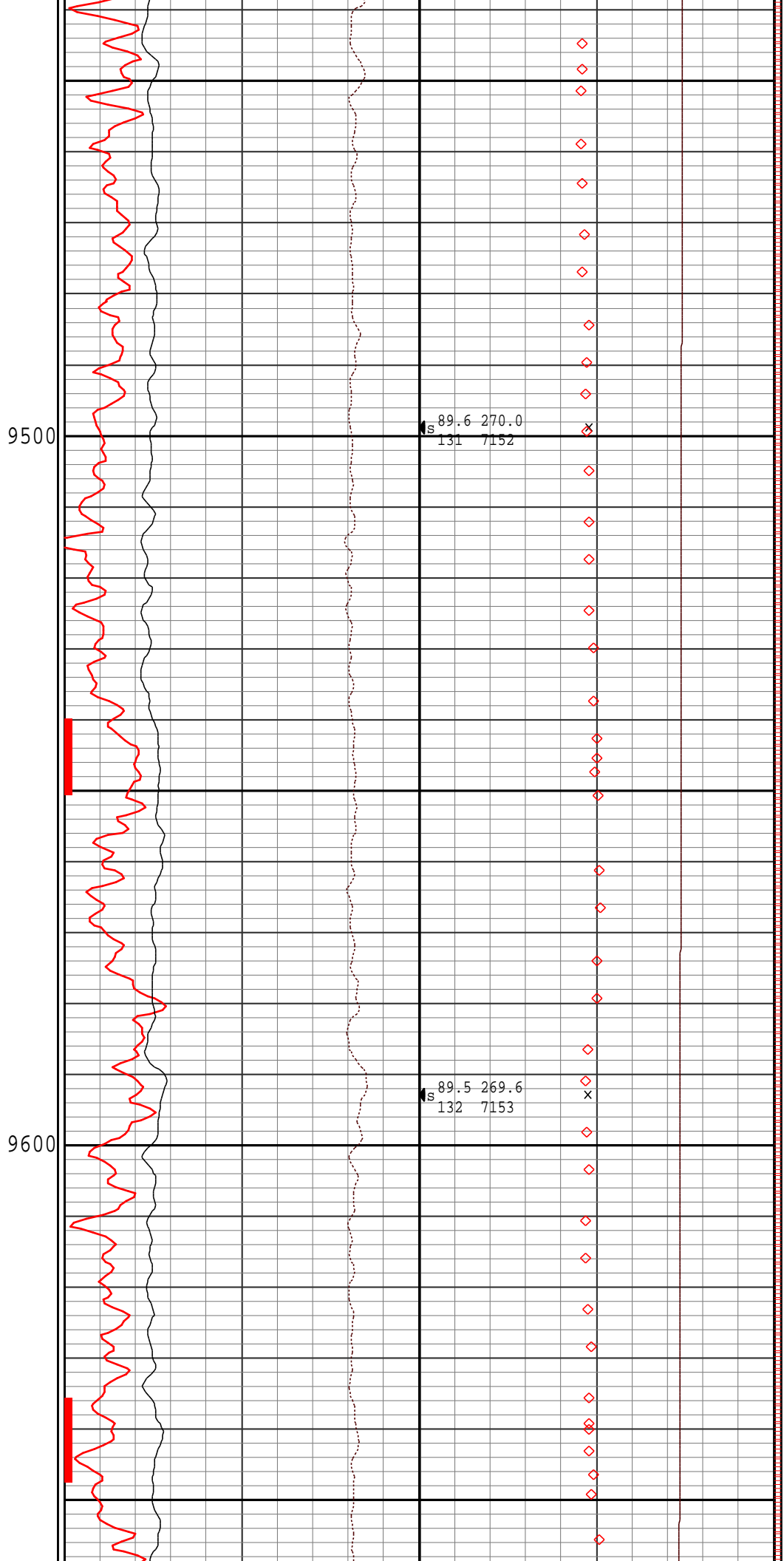
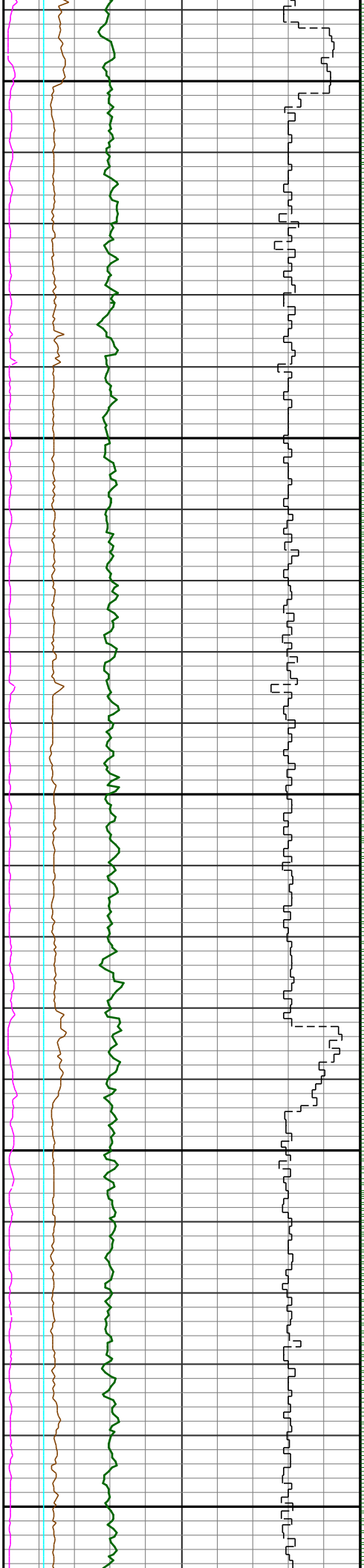
9000

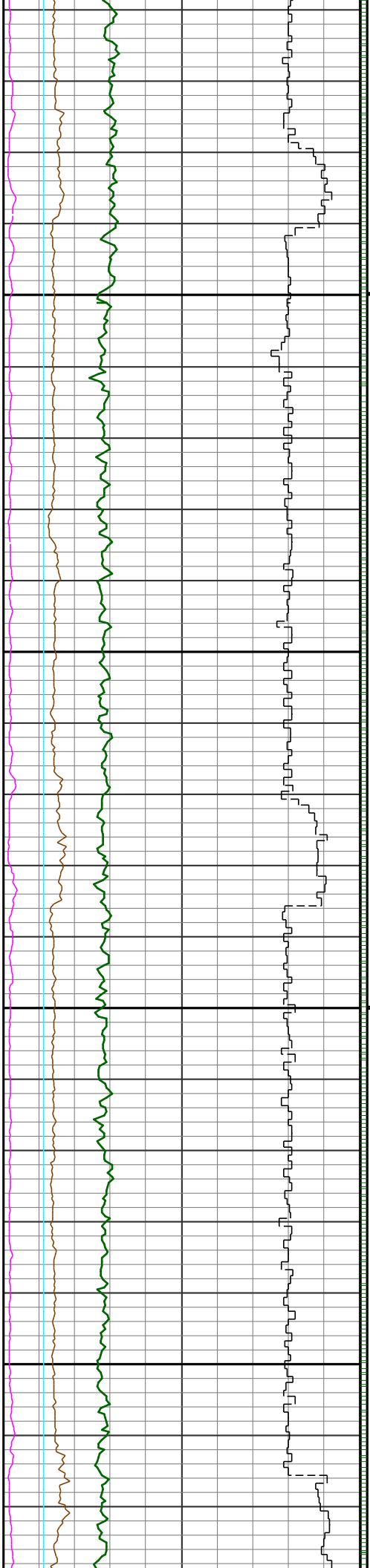
9100

9200



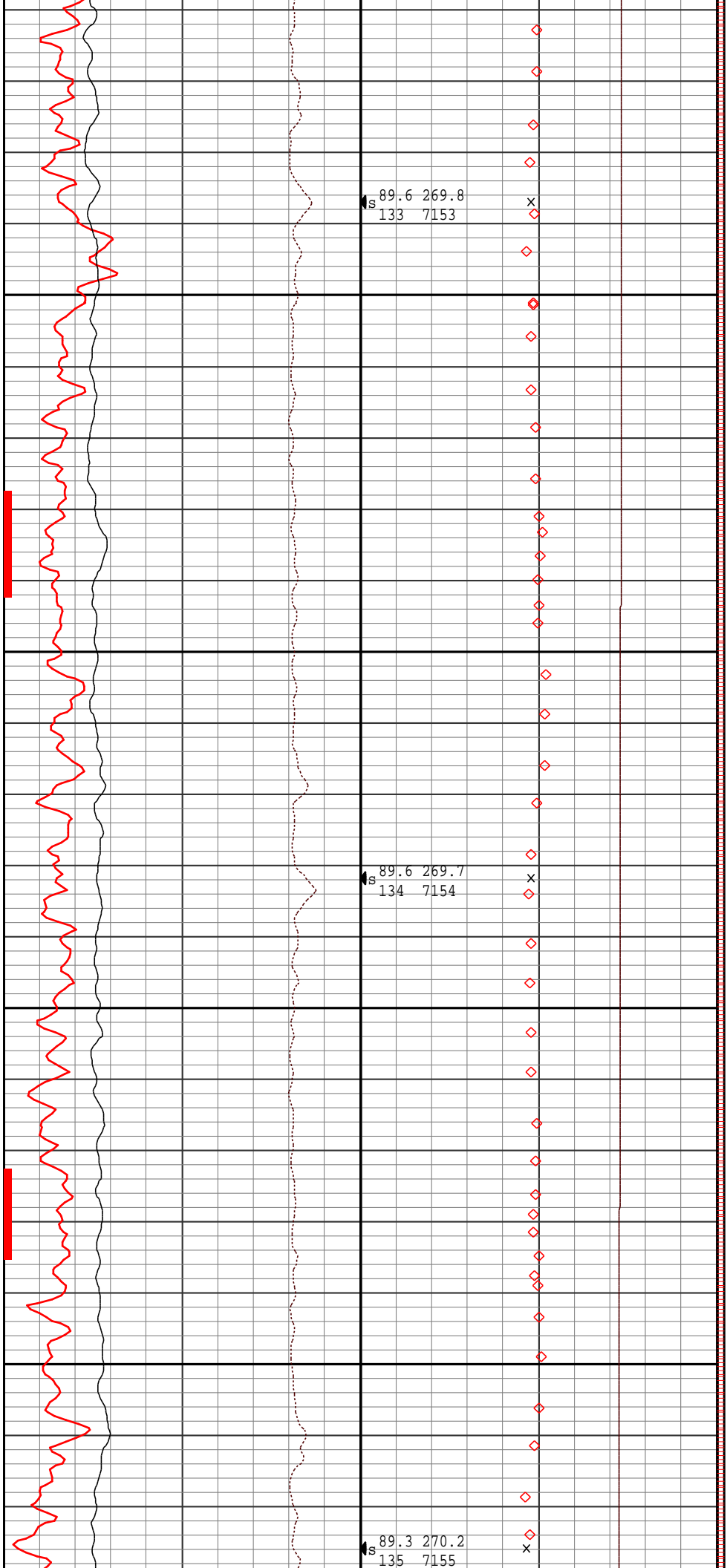


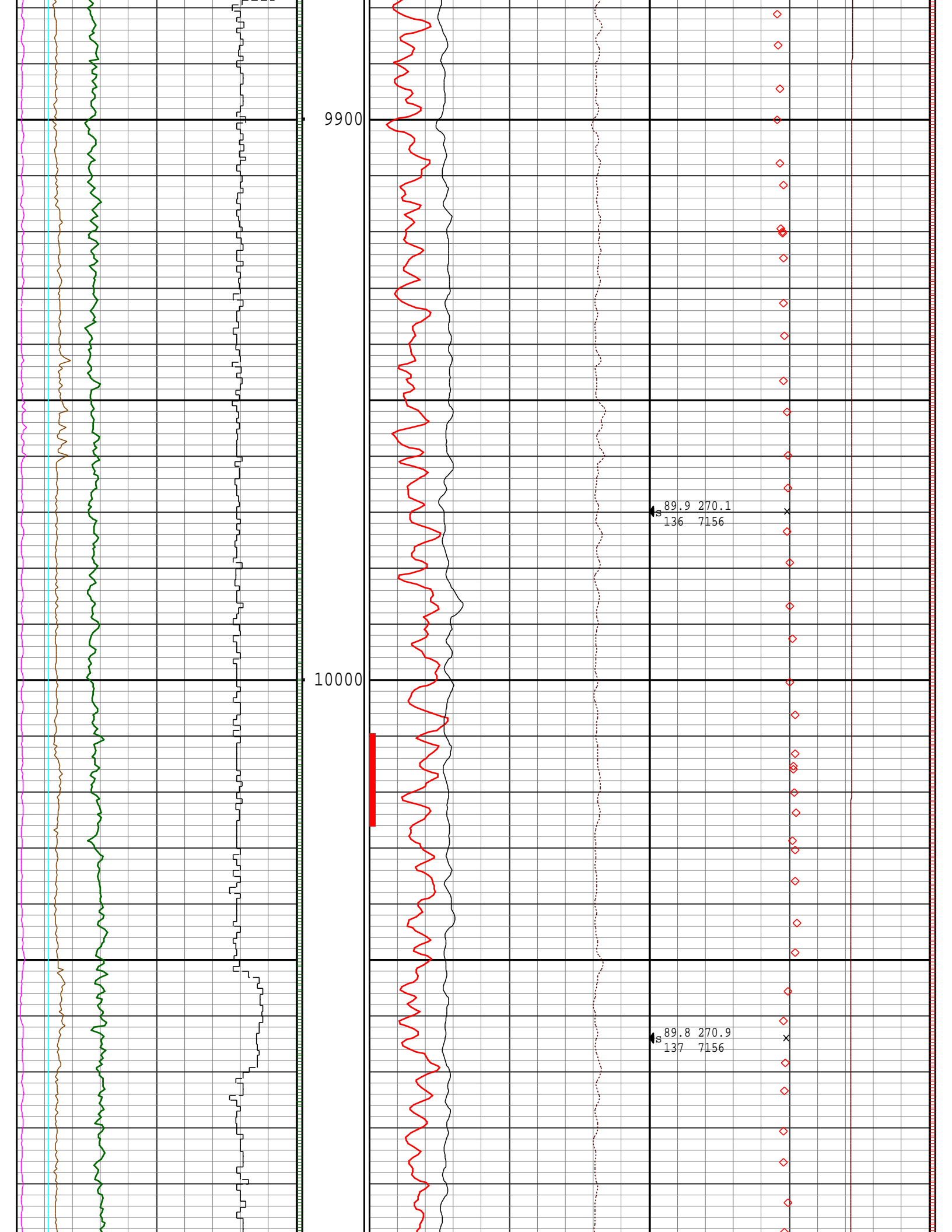


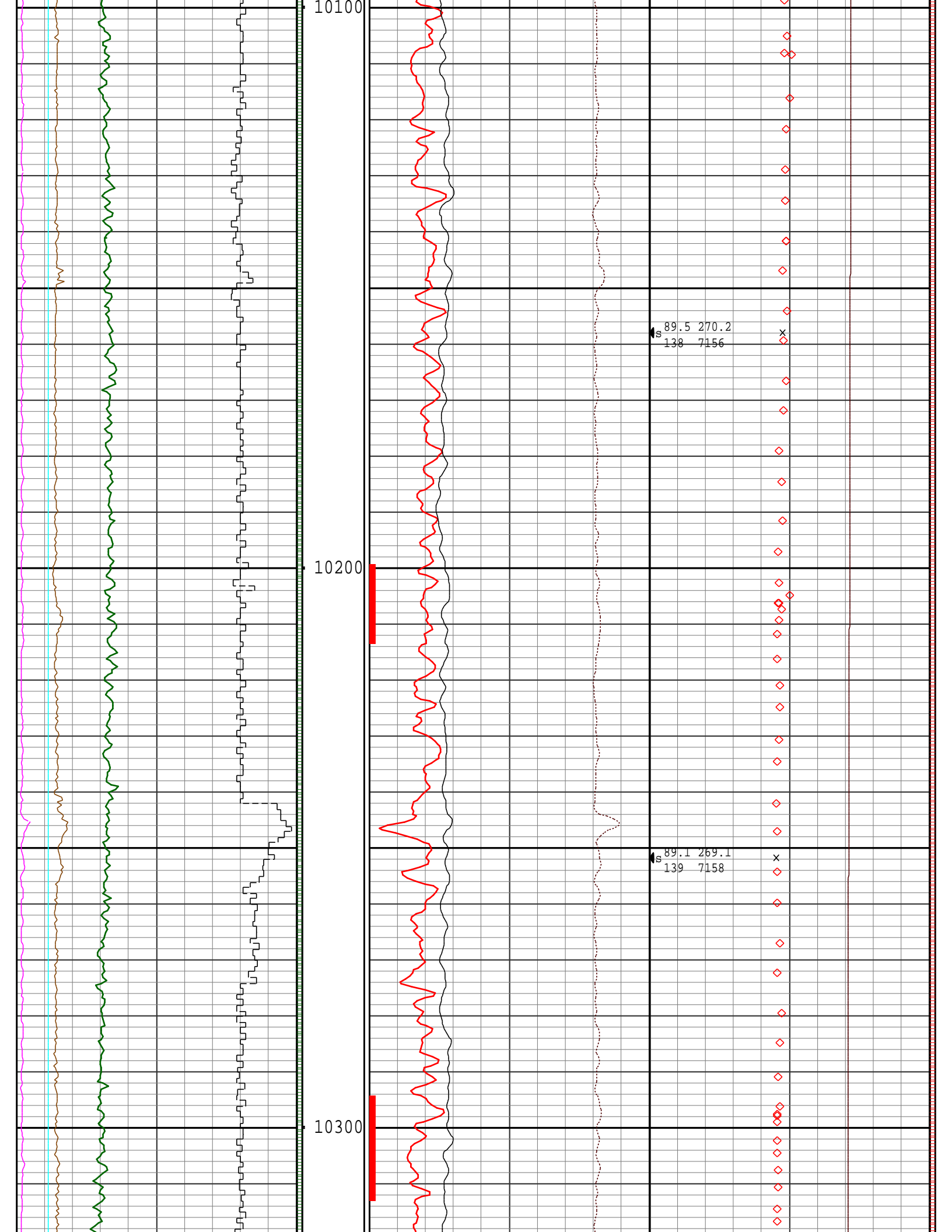


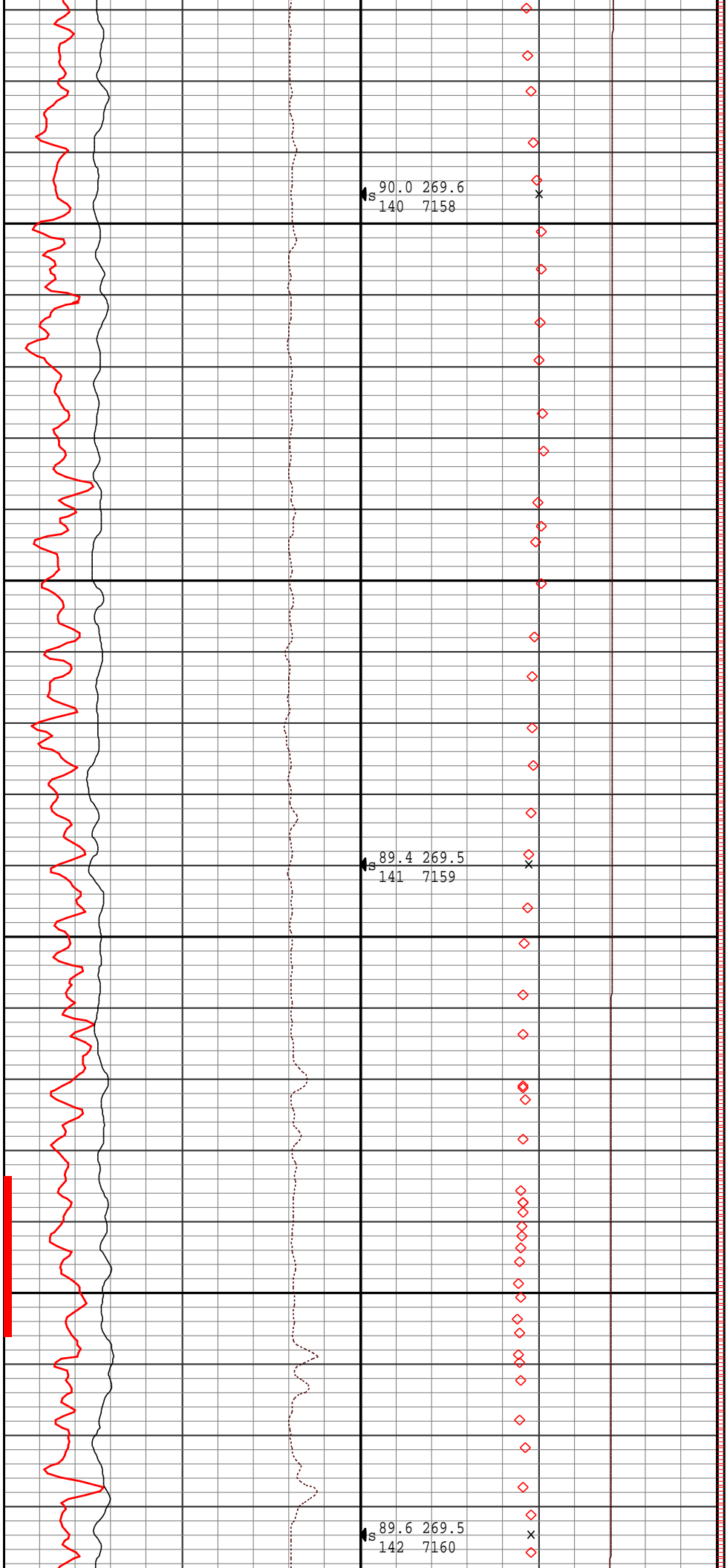
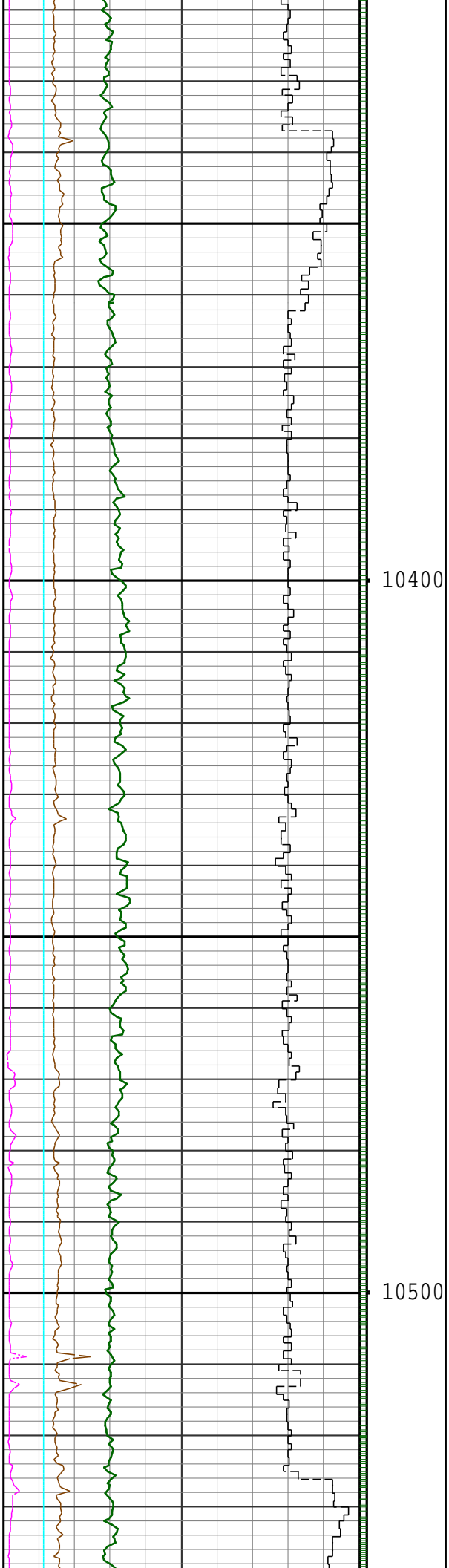
9700

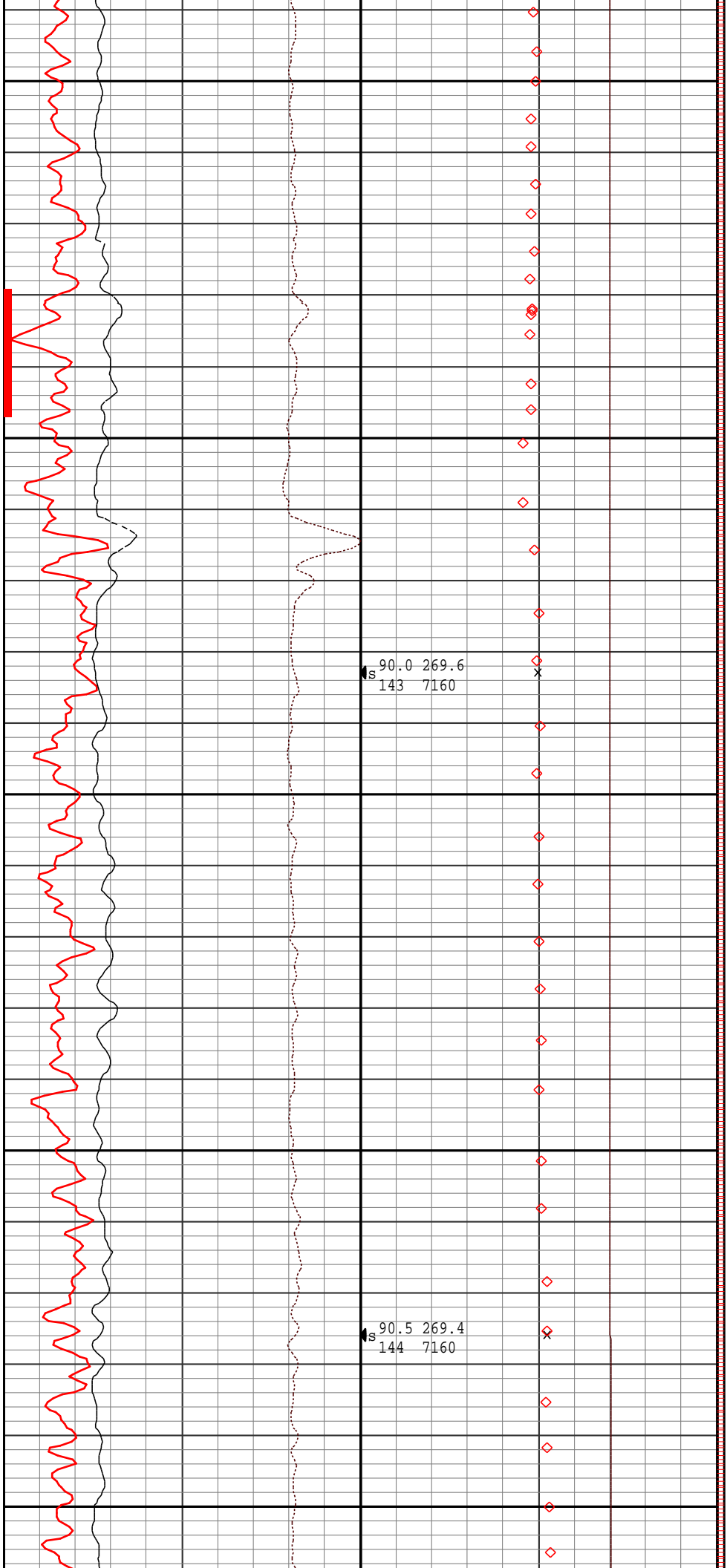
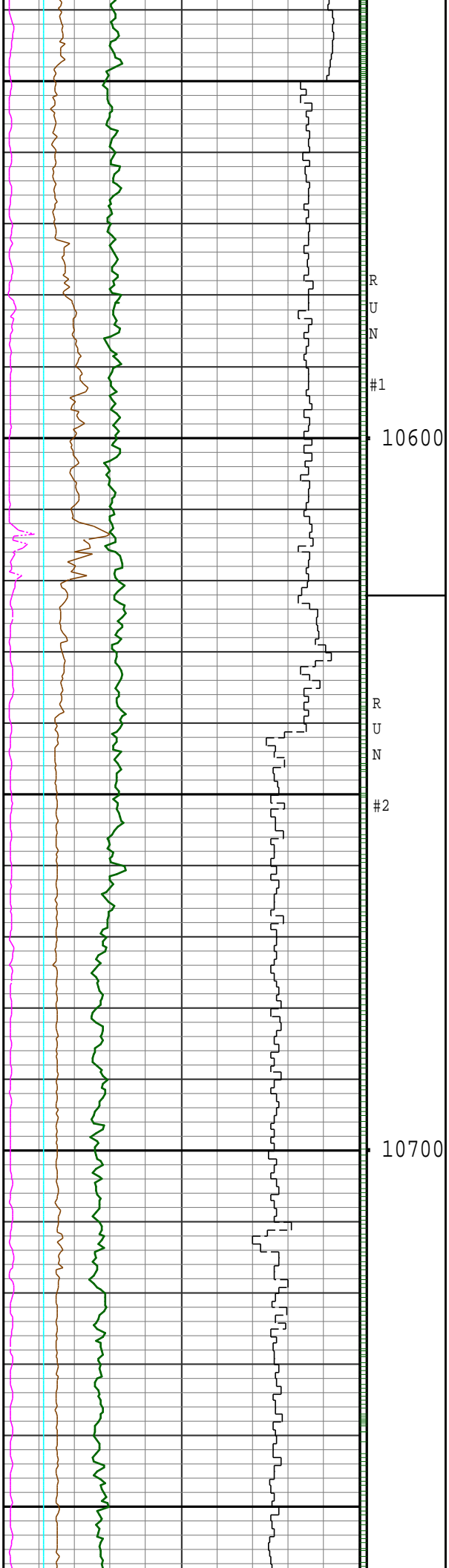
9800

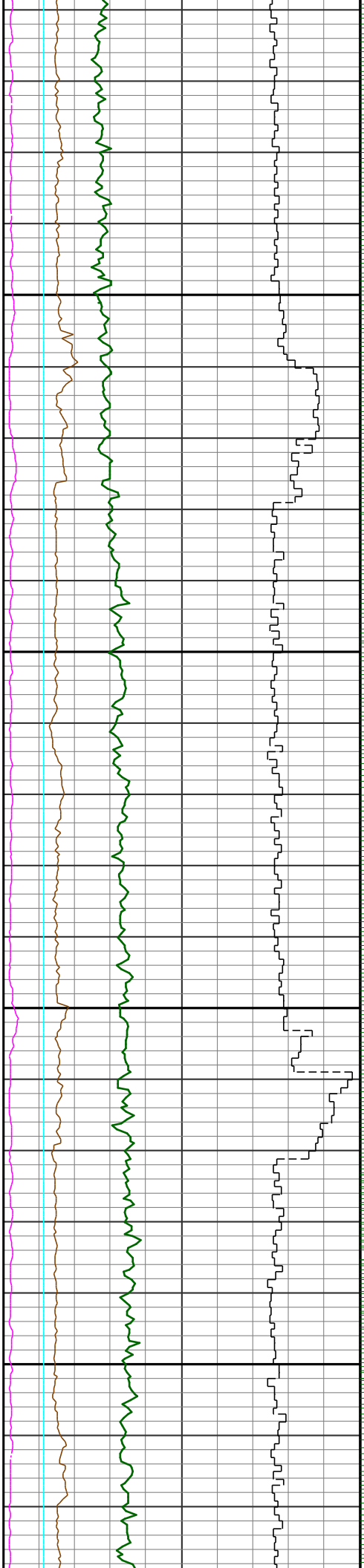






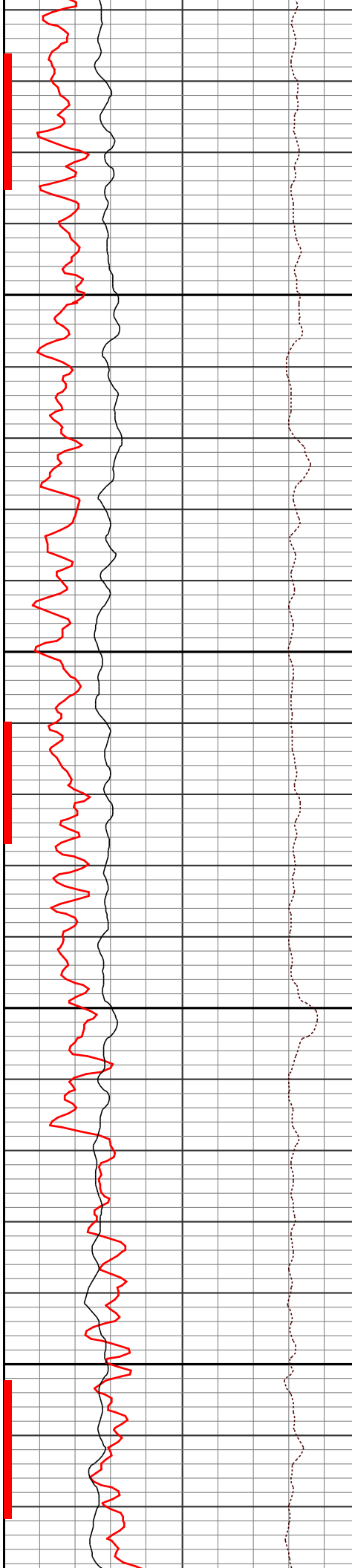






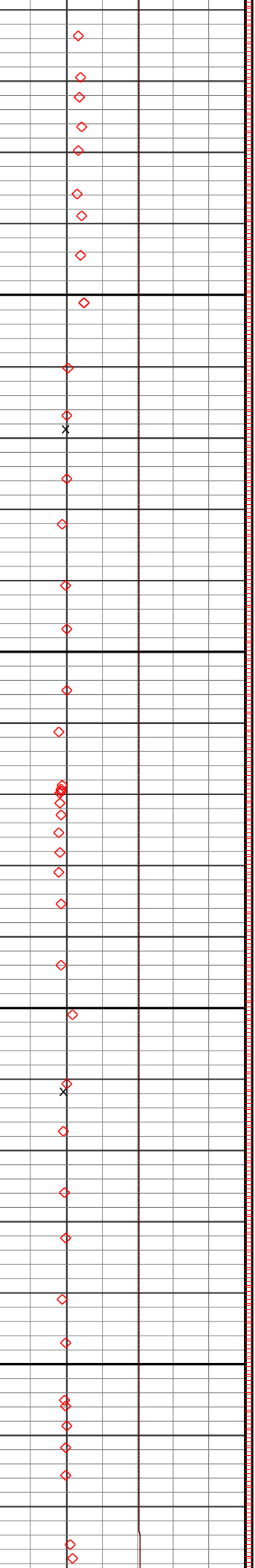
10800

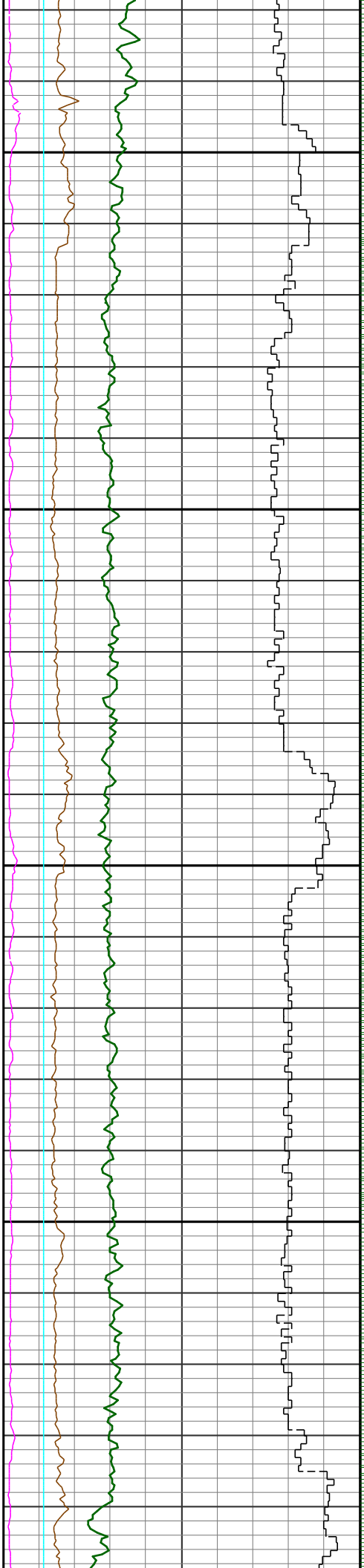
10900



90.0 269.4
145 7159

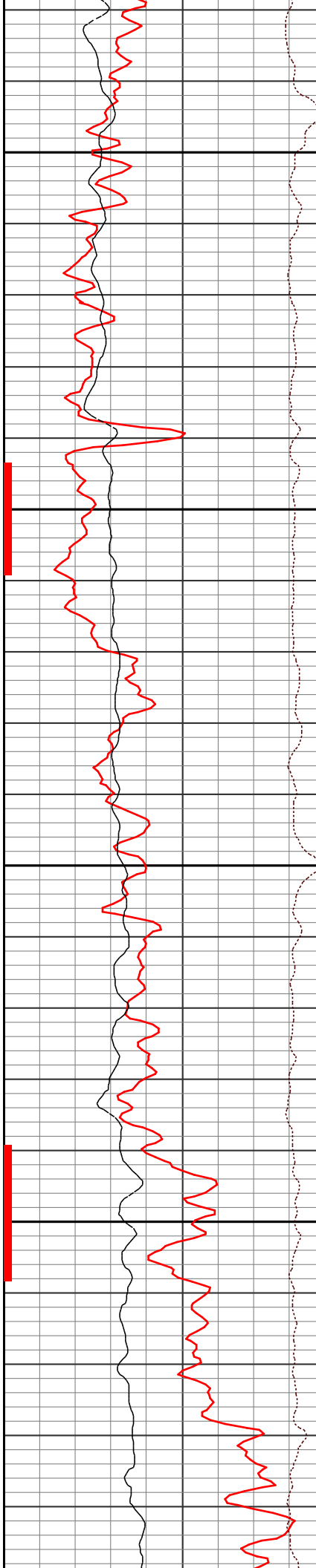
89.9 268.2
146 7159





11000

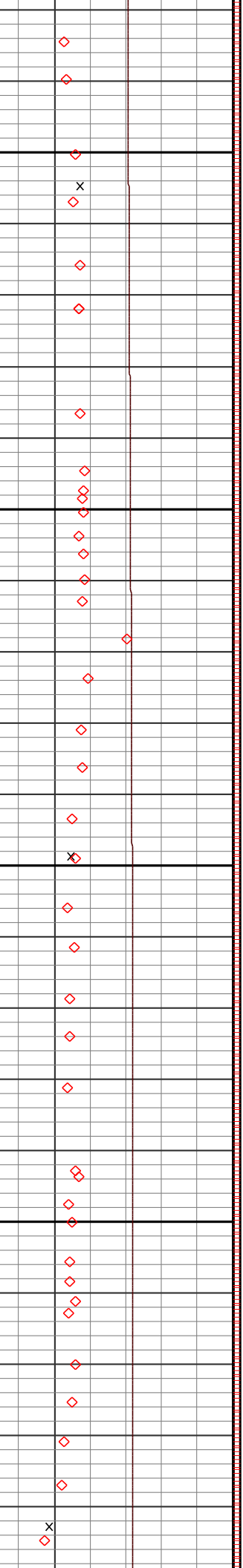
11100

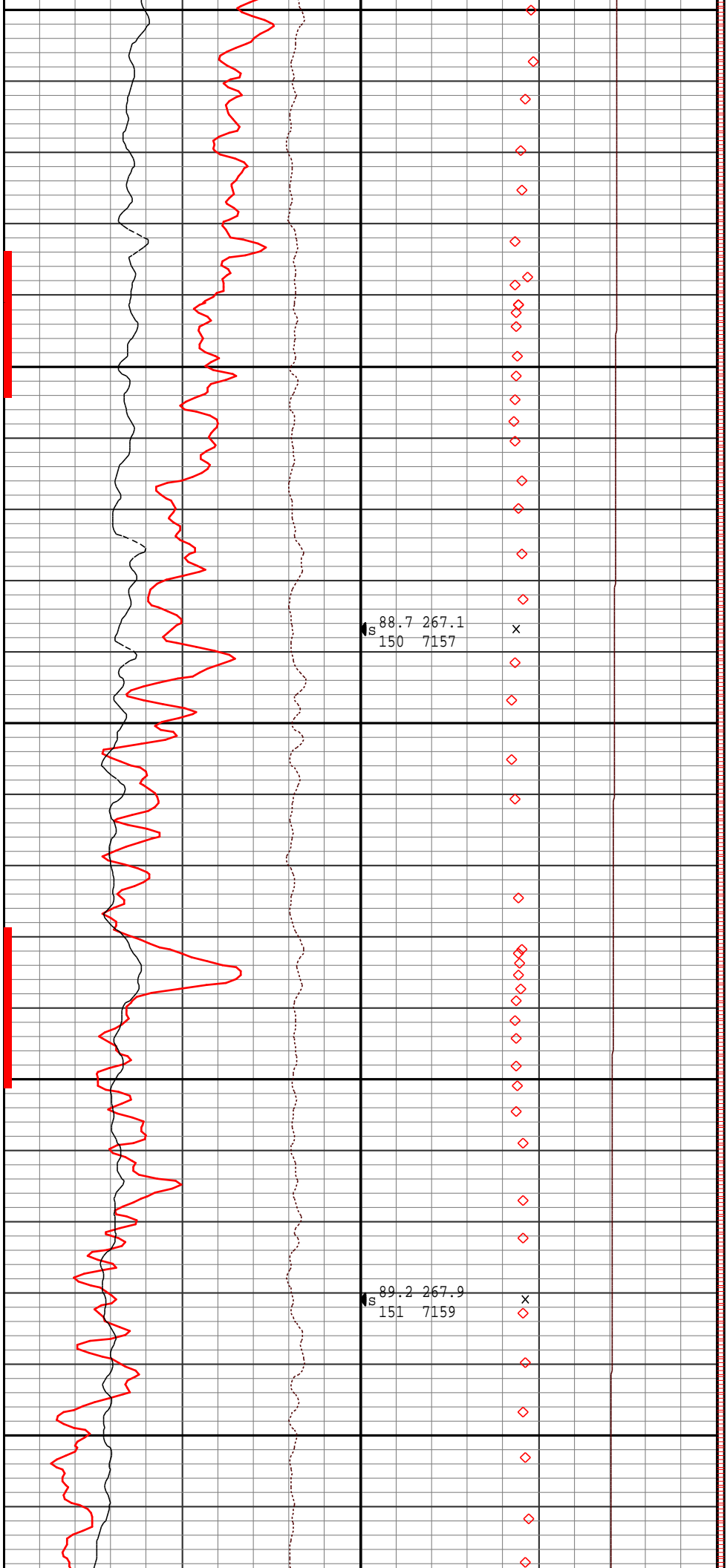
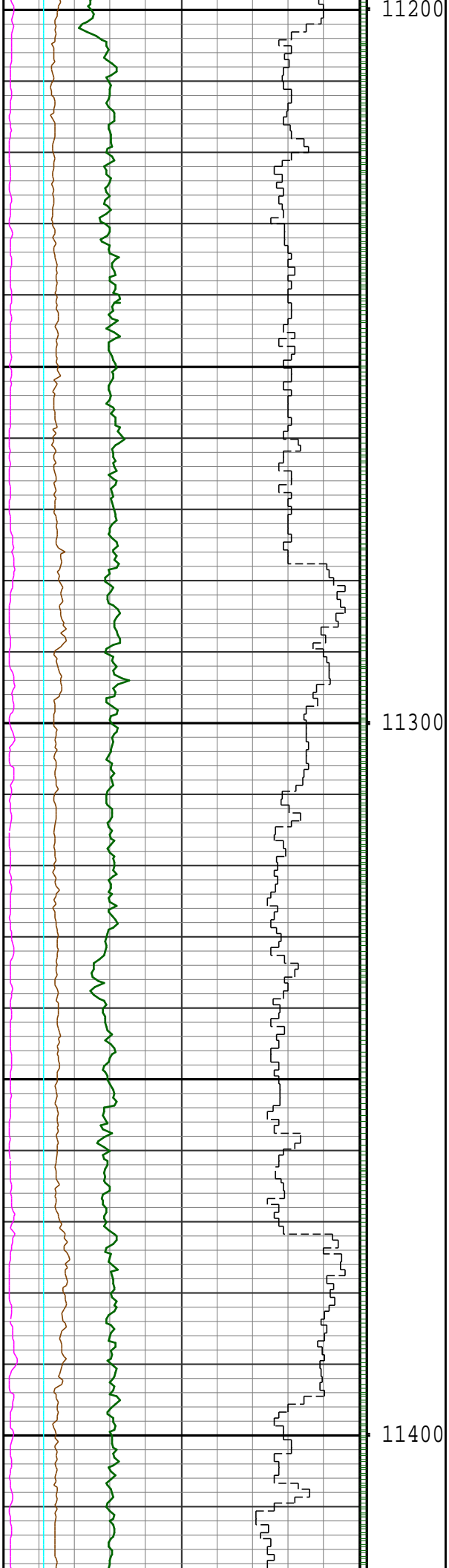


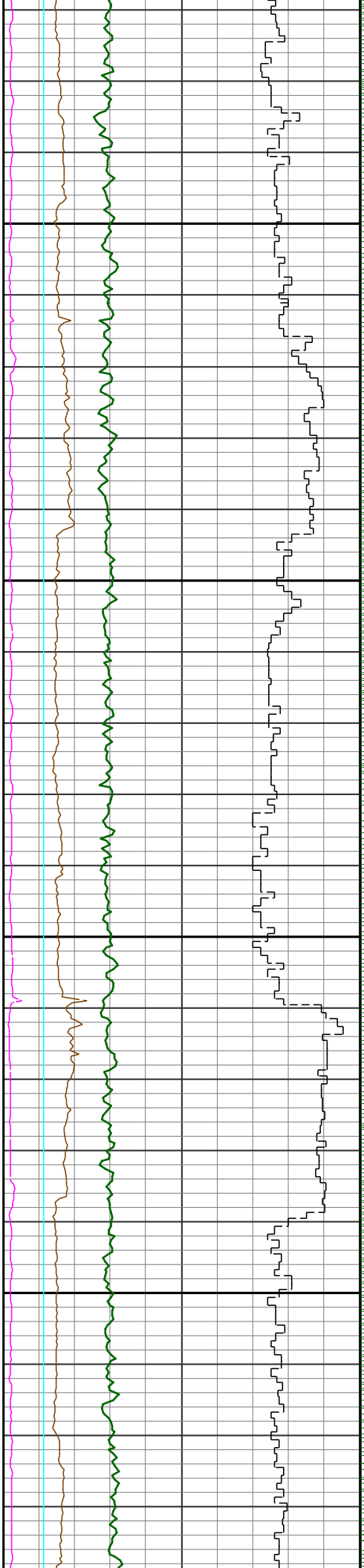
S 91.4 269.9
147 7158

S 90.9 269.1
148 7156

S 89.7 267.8
149 7156

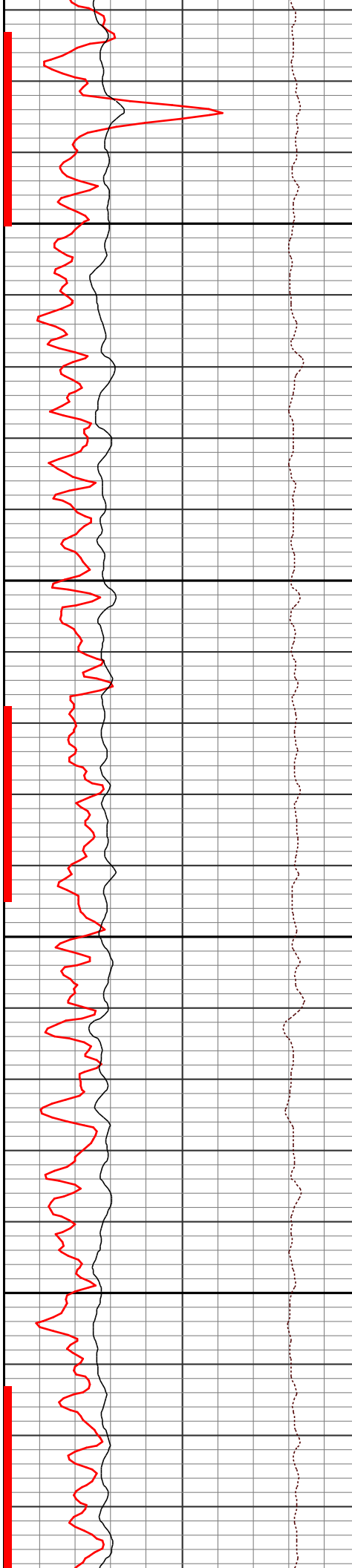






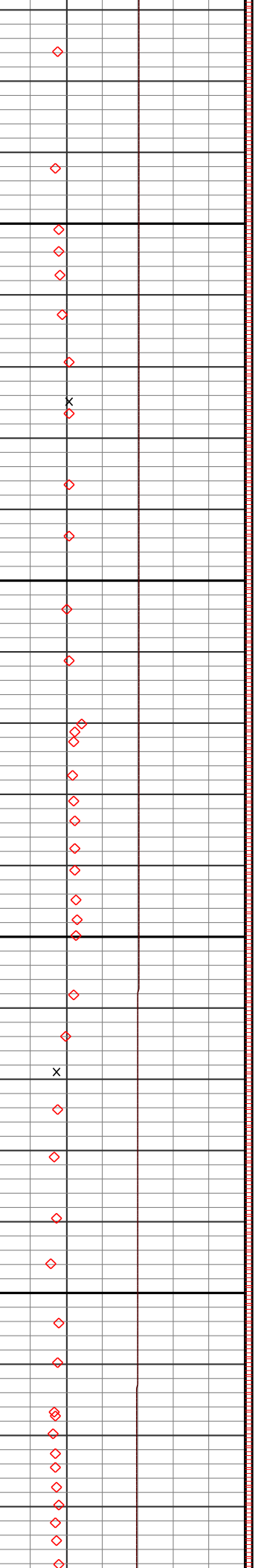
11500

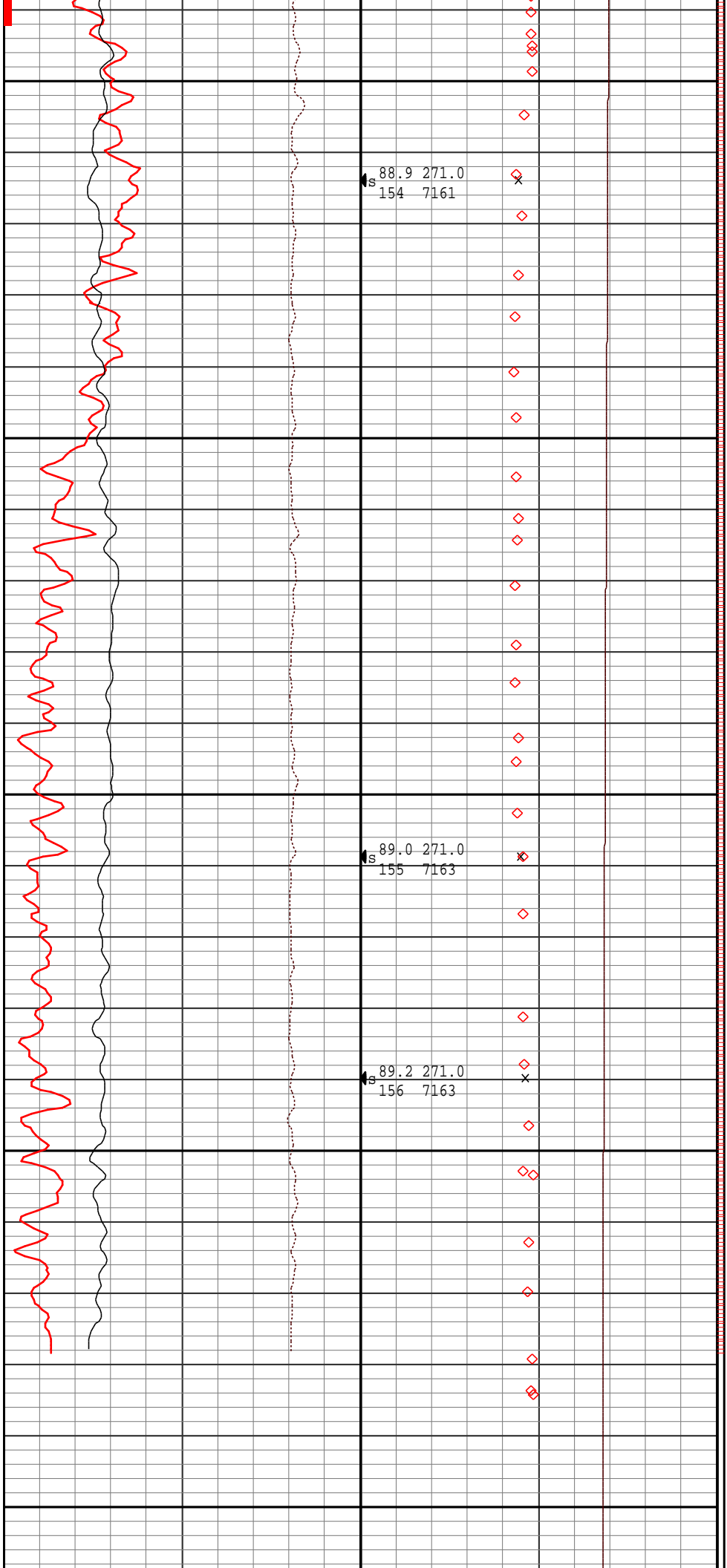
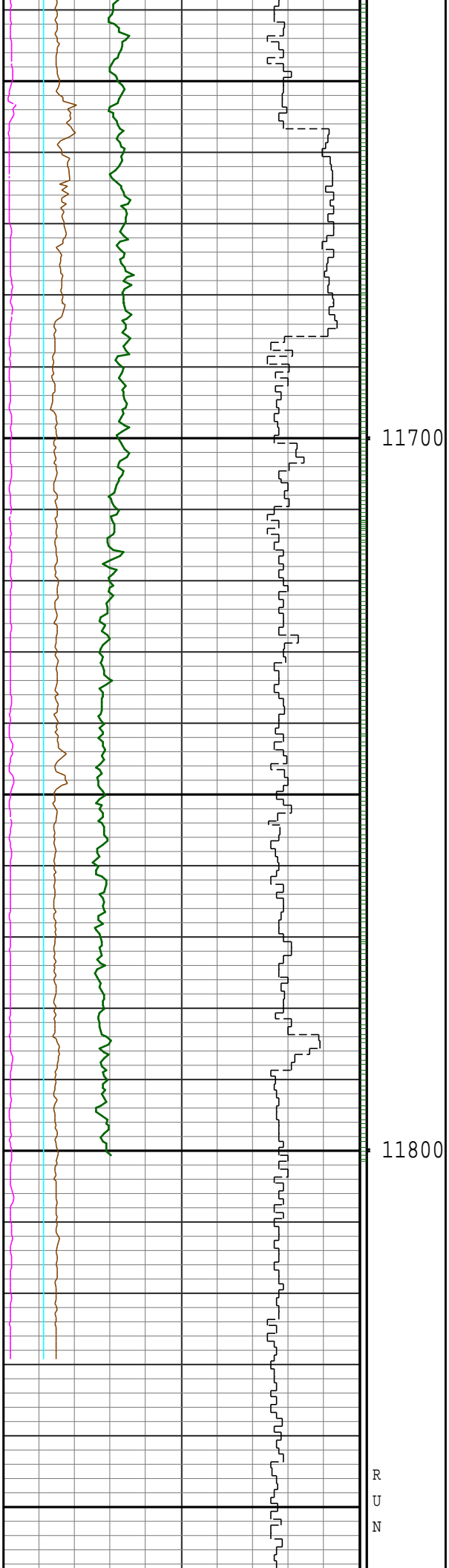
11600



S 90.1 268.9
152 7159

S 89.4 269.9
153 7160





			#2						
							PROJECTED ==>> 89.6 271.5 SURVEY 157 7164		
0	GRC API	300	DEPTH	20	DPHI pu	0	7300	TVD ft	7100
avg = 6 in			MD ft						
1000	ROP ft/hr	0	5" = 100ft	-0.8	DRHO g/cc	0.2	80	INC deg	100
avg = 1 ft			COMMENTS	0	PE	10	80	DINC_I deg	100
5	CALI in	15	SHOES	SLIDE (DEN)					
5	BS in	15		inc azi # TVD					
0	WSOD in	10							