

Tekton Energy

Well Name: **Raindance 4 #1-1-32-090-4-NH**

Surface Location: Raindance Pad Sec.30-T6N-R67W

North American Datum 1983 , US State Plane 1983 , Colorado Northern Zone

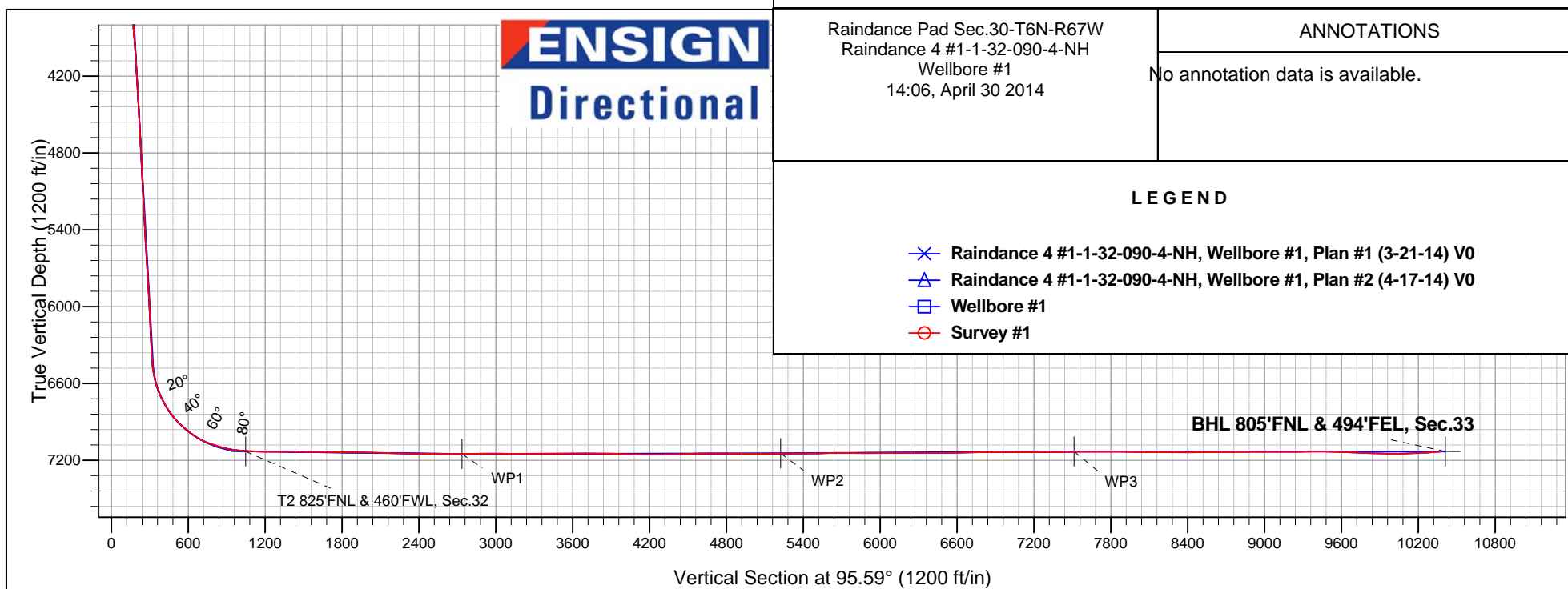
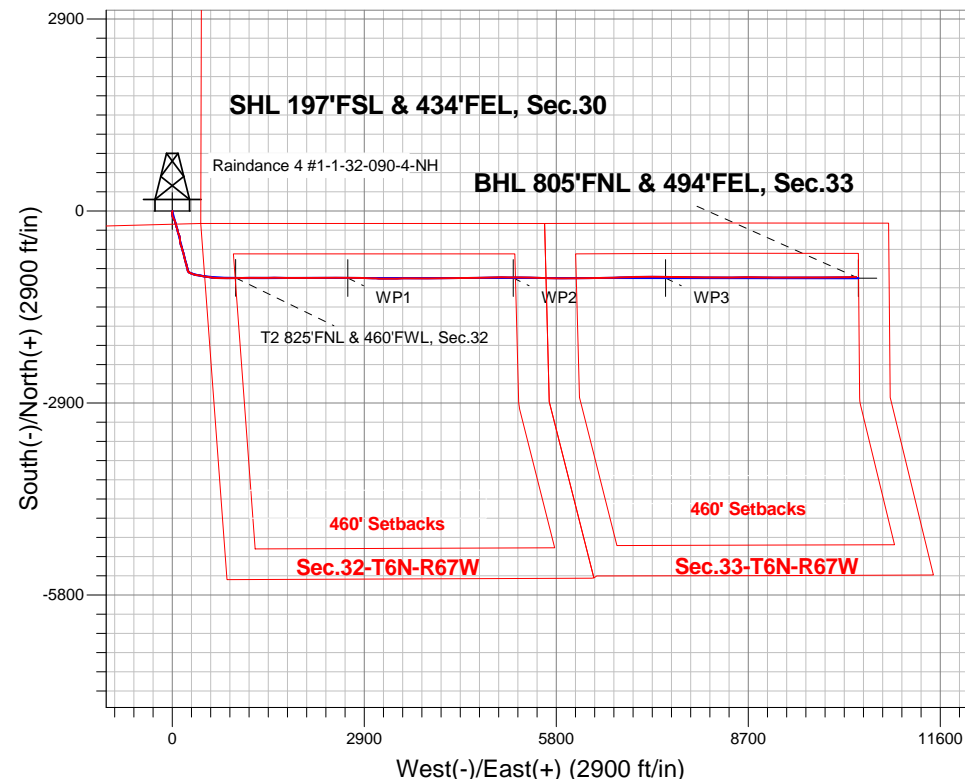
Ground Elevation: 4982.0

+N/-S	+E/-W	Northing	Easting	Latitude	Longitude	Slot
0.0	0.0	1407740.38	3159169.71	40.451240	-104.928060	

Original Well Elev WELL @ 5004.5ft (Original Well Elev)

FINAL SURVEY

Projected Bottom Hole Location
170000'MD 7133'TVD 994'S & 10375'E of
SHL 94.09 degree Incl @ 87.29 degree AZM



Raindance Pad Sec.30-T6N-R67W
Raindance 4 #1-1-32-090-4-NH
Wellbore #1
14:06, April 30 2014

ANNOTATIONS

No annotation data is available.

LEGEND

- ✕ Raindance 4 #1-1-32-090-4-NH, Wellbore #1, Plan #1 (3-21-14) V0
- △ Raindance 4 #1-1-32-090-4-NH, Wellbore #1, Plan #2 (4-17-14) V0
- Wellbore #1
- Survey #1



Tekton Energy

SEC.30-T6N-R67W

Raindance Pad Sec.30-T6N-R67W

Raindance 4 #1-1-32-090-4-NH

Wellbore #1

Survey: Survey #1

Standard Survey Report

30 April, 2014

Company:	Tekton Energy	Local Co-ordinate Reference:	Well Raindance 4 #1-1-32-090-4-NH
Project:	SEC.30-T6N-R67W	TVD Reference:	WELL @ 5004.5ft (Original Well Elev)
Site:	Raindance Pad Sec.30-T6N-R67W	MD Reference:	WELL @ 5004.5ft (Original Well Elev)
Well:	Raindance 4 #1-1-32-090-4-NH	North Reference:	True
Wellbore:	Wellbore #1	Survey Calculation Method:	Minimum Curvature
Design:	Wellbore #1	Database:	Landmark

Survey										
Measured Depth (ft)	Inclination (°)	Azimuth (°)	Vertical Depth (ft)	+N/-S (ft)	+E/-W (ft)	Vertical Section (ft)	Dogleg Rate (°/100ft)	Build Rate (°/100ft)	Turn Rate (°/100ft)	
1,105.0	12.30	161.70	1,099.6	-76.1	2.8	10.2	2.31	1.61	-8.28	
1,197.0	12.40	153.80	1,189.5	-94.2	10.2	19.4	1.84	0.11	-8.59	
1,289.0	11.80	155.40	1,279.4	-111.6	18.5	29.3	0.75	-0.65	1.74	
1,381.0	10.50	151.10	1,369.7	-127.5	26.5	38.8	1.68	-1.41	-4.67	
1,473.0	10.10	151.50	1,460.2	-142.0	34.4	48.0	0.44	-0.43	0.43	
1,565.0	9.30	165.00	1,550.9	-156.2	40.2	55.2	2.61	-0.87	14.67	
1,657.0	8.30	163.50	1,641.8	-169.8	44.0	60.3	1.12	-1.09	-1.63	
1,749.0	7.40	160.80	1,733.0	-181.7	47.8	65.3	1.06	-0.98	-2.93	
1,841.0	8.00	169.40	1,824.1	-193.6	50.9	69.5	1.41	0.65	9.35	
1,933.0	6.60	164.20	1,915.4	-205.0	53.5	73.3	1.68	-1.52	-5.65	
2,025.0	8.00	160.80	2,006.6	-216.1	57.1	77.9	1.59	1.52	-3.70	
2,118.0	10.30	165.70	2,098.5	-230.3	61.3	83.4	2.61	2.47	5.27	
2,210.0	8.60	161.70	2,189.2	-244.8	65.5	89.0	1.98	-1.85	-4.35	
2,302.0	8.40	161.00	2,280.2	-257.7	69.8	94.6	0.24	-0.22	-0.76	
2,396.0	9.60	167.10	2,373.0	-271.8	73.8	99.9	1.63	1.28	6.49	
2,491.0	9.70	166.80	2,466.7	-287.3	77.4	105.0	0.12	0.11	-0.32	
2,586.0	9.70	167.70	2,560.3	-303.0	80.9	110.1	0.16	0.00	0.95	
2,676.0	9.80	165.00	2,649.0	-317.8	84.5	115.1	0.52	0.11	-3.00	
2,770.0	8.80	159.80	2,741.8	-332.2	89.1	121.0	1.39	-1.06	-5.53	
2,864.0	10.50	160.10	2,834.5	-347.0	94.5	127.8	1.81	1.81	0.32	
2,957.0	9.50	151.30	2,926.1	-361.7	101.0	135.8	1.96	-1.08	-9.46	
3,052.0	8.60	165.20	3,019.9	-375.5	106.6	142.7	2.48	-0.95	14.63	
3,147.0	9.30	171.50	3,113.7	-389.9	109.6	147.0	1.27	0.74	6.63	
3,242.0	8.80	168.70	3,207.5	-404.7	112.1	151.0	0.70	-0.53	-2.95	
3,337.0	9.10	179.40	3,301.4	-419.3	113.6	153.9	1.78	0.32	11.26	
3,431.0	8.30	172.10	3,394.3	-433.5	114.6	156.3	1.45	-0.85	-7.77	
3,526.0	9.20	175.60	3,488.2	-447.8	116.2	159.2	1.10	0.95	3.68	
3,621.0	8.20	175.60	3,582.1	-462.2	117.3	161.7	1.05	-1.05	0.00	
3,714.0	9.90	168.60	3,674.0	-476.6	119.4	165.2	2.17	1.83	-7.53	
3,810.0	10.00	169.30	3,768.5	-492.9	122.5	170.0	0.16	0.10	0.73	
3,902.0	10.20	158.50	3,859.1	-508.3	127.0	175.9	2.07	0.22	-11.74	
3,997.0	9.50	157.10	3,952.7	-523.4	133.1	183.5	0.78	-0.74	-1.47	
4,092.0	9.40	165.40	4,046.4	-538.1	138.2	189.9	1.44	-0.11	8.74	
4,185.0	7.60	162.90	4,138.4	-551.3	141.9	194.9	1.98	-1.94	-2.69	
4,280.0	9.70	164.30	4,232.3	-565.0	145.9	200.2	2.22	2.21	1.47	
4,374.0	8.50	162.80	4,325.1	-579.3	150.1	205.8	1.30	-1.28	-1.60	
4,468.0	10.40	166.30	4,417.8	-594.2	154.1	211.3	2.11	2.02	3.72	
4,561.0	9.60	162.60	4,509.4	-609.7	158.5	217.1	1.10	-0.86	-3.98	
4,655.0	9.20	163.30	4,602.2	-624.4	163.0	223.0	0.44	-0.43	0.74	
4,750.0	8.40	165.90	4,696.0	-638.4	166.8	228.2	0.94	-0.84	2.74	
4,843.0	7.90	168.20	4,788.1	-651.3	169.8	232.4	0.64	-0.54	2.47	
4,937.0	7.60	167.00	4,881.2	-663.6	172.5	236.3	0.36	-0.32	-1.28	
5,029.0	8.50	165.40	4,972.3	-676.1	175.6	240.6	1.01	0.98	-1.74	
5,123.0	7.30	163.60	5,065.4	-688.6	179.0	245.3	1.30	-1.28	-1.91	
5,217.0	9.50	166.60	5,158.4	-701.9	182.5	250.0	2.39	2.34	3.19	
5,311.0	8.10	165.40	5,251.3	-715.8	186.0	254.8	1.50	-1.49	-1.28	
5,405.0	9.80	168.00	5,344.2	-730.1	189.3	259.5	1.86	1.81	2.77	
5,498.0	7.90	162.80	5,436.1	-743.9	192.9	264.4	2.21	-2.04	-5.59	
5,592.0	9.80	165.70	5,528.9	-757.8	196.7	269.6	2.08	2.02	3.09	
5,686.0	10.20	165.40	5,621.5	-773.6	200.8	275.2	0.43	0.43	-0.32	
5,781.0	8.50	160.50	5,715.2	-788.4	205.3	281.1	1.97	-1.79	-5.16	
5,876.0	9.80	164.30	5,809.0	-802.8	209.8	287.0	1.51	1.37	4.00	
5,970.0	7.90	162.40	5,901.9	-816.7	213.9	292.5	2.04	-2.02	-2.02	
6,063.0	9.80	172.20	5,993.8	-830.6	216.9	296.8	2.60	2.04	10.54	

Company:	Tekton Energy	Local Co-ordinate Reference:	Well Raindance 4 #1-1-32-090-4-NH
Project:	SEC.30-T6N-R67W	TVD Reference:	WELL @ 5004.5ft (Original Well Elev)
Site:	Raindance Pad Sec.30-T6N-R67W	MD Reference:	WELL @ 5004.5ft (Original Well Elev)
Well:	Raindance 4 #1-1-32-090-4-NH	North Reference:	True
Wellbore:	Wellbore #1	Survey Calculation Method:	Minimum Curvature
Design:	Wellbore #1	Database:	Landmark

Survey

Measured Depth (ft)	Inclination (°)	Azimuth (°)	Vertical Depth (ft)	+N/-S (ft)	+E/-W (ft)	Vertical Section (ft)	Dogleg Rate (°/100ft)	Build Rate (°/100ft)	Turn Rate (°/100ft)
6,158.0	10.10	165.70	6,087.4	-846.7	220.1	301.5	1.22	0.32	-6.84
6,251.0	8.40	165.00	6,179.2	-861.1	223.9	306.7	1.83	-1.83	-0.75
6,346.0	9.40	169.80	6,273.0	-875.5	227.0	311.2	1.31	1.05	5.05
6,438.0	10.00	165.20	6,363.7	-890.6	230.4	316.1	1.06	0.65	-5.00
6,476.0	9.40	163.50	6,401.2	-896.8	232.1	318.4	1.75	-1.58	-4.47
6,532.0	9.20	156.40	6,456.4	-905.3	235.2	322.3	2.08	-0.36	-12.68
6,579.0	11.70	140.60	6,502.7	-912.4	239.7	327.5	8.04	5.32	-33.62
6,627.0	15.00	135.30	6,549.4	-920.6	247.2	335.7	7.33	6.88	-11.04
6,674.0	17.00	125.80	6,594.5	-928.9	257.1	346.3	7.00	4.26	-20.21
6,721.0	20.50	113.90	6,639.1	-936.3	270.2	360.1	11.00	7.45	-25.32
6,768.0	24.90	112.50	6,682.4	-943.4	286.8	377.4	9.43	9.36	-2.98
6,815.0	26.80	110.90	6,724.7	-951.0	305.9	397.1	4.31	4.04	-3.40
6,862.0	29.60	105.80	6,766.1	-957.9	327.0	418.7	7.86	5.96	-10.85
6,909.0	33.40	102.30	6,806.2	-963.8	350.8	443.0	8.97	8.09	-7.45
6,956.0	37.70	100.00	6,844.4	-969.1	377.6	470.2	9.58	9.15	-4.89
7,003.0	42.10	99.50	6,880.5	-974.2	407.3	500.3	9.39	9.36	-1.06
7,050.0	46.00	98.80	6,914.2	-979.4	439.5	532.9	8.36	8.30	-1.49
7,095.0	49.00	99.60	6,944.6	-984.7	472.3	566.0	6.79	6.67	1.78
7,142.0	51.50	100.20	6,974.7	-990.9	507.9	602.0	5.41	5.32	1.28
7,189.0	54.30	98.90	7,003.0	-997.1	544.9	639.4	6.35	5.96	-2.77
7,236.0	59.40	97.40	7,028.7	-1,002.7	583.8	678.7	11.17	10.85	-3.19
7,283.0	65.10	96.30	7,050.6	-1,007.6	625.1	720.3	12.30	12.13	-2.34
7,330.0	69.70	92.40	7,068.7	-1,010.9	668.3	763.6	12.43	9.79	-8.30
7,377.0	71.70	91.20	7,084.2	-1,012.3	712.7	807.9	4.89	4.26	-2.55
7,424.0	74.70	90.50	7,097.8	-1,012.9	757.6	852.7	6.54	6.38	-1.49
7,471.0	77.60	89.80	7,109.0	-1,013.0	803.3	898.1	6.34	6.17	-1.49
7,518.0	80.60	90.00	7,117.9	-1,013.0	849.4	944.0	6.40	6.38	0.43
7,564.0	83.40	88.90	7,124.3	-1,012.5	895.0	989.3	6.53	6.09	-2.39
7,602.0	87.00	88.90	7,127.5	-1,011.8	932.8	1,026.9	9.47	9.47	0.00
7,624.0	87.36	88.86	7,128.6	-1,011.4	954.8	1,048.8	1.65	1.64	-0.19
T2 825'FNL & 460'FWL, Sec.32									
7,691.0	88.46	88.73	7,131.0	-1,010.0	1,021.7	1,115.2	1.65	1.64	-0.19
7,737.0	89.43	90.00	7,131.9	-1,009.4	1,067.7	1,161.0	3.47	2.11	2.76
7,832.0	89.87	90.33	7,132.5	-1,009.7	1,162.7	1,255.5	0.58	0.46	0.35
7,926.0	89.52	89.90	7,133.0	-1,009.9	1,256.7	1,349.1	0.59	-0.37	-0.46
8,020.0	89.16	89.19	7,134.1	-1,009.2	1,350.7	1,442.6	0.85	-0.38	-0.76
8,115.0	89.78	89.09	7,134.9	-1,007.7	1,445.7	1,537.0	0.66	0.65	-0.11
8,209.0	89.52	89.76	7,135.5	-1,006.8	1,539.7	1,630.4	0.76	-0.28	0.71
8,304.0	89.16	89.86	7,136.6	-1,006.5	1,634.7	1,724.9	0.39	-0.38	0.11
8,398.0	88.55	90.14	7,138.5	-1,006.5	1,728.6	1,818.5	0.71	-0.65	0.30
8,492.0	89.43	90.57	7,140.1	-1,007.1	1,822.6	1,912.1	1.04	0.94	0.46
8,587.0	89.96	91.00	7,140.6	-1,008.4	1,917.6	2,006.7	0.72	0.56	0.45
8,681.0	88.55	90.52	7,141.9	-1,009.6	2,011.6	2,100.4	1.58	-1.50	-0.51
8,775.0	87.93	90.88	7,144.7	-1,010.8	2,105.5	2,194.0	0.76	-0.66	0.38
8,870.0	88.72	89.15	7,147.5	-1,010.8	2,200.5	2,288.5	2.00	0.83	-1.82
8,961.0	88.81	88.63	7,149.5	-1,009.0	2,291.5	2,378.9	0.58	0.10	-0.57
9,053.0	90.13	88.98	7,150.3	-1,007.1	2,383.4	2,470.2	1.48	1.43	0.38
9,145.0	89.78	89.64	7,150.4	-1,006.0	2,475.4	2,561.7	0.81	-0.38	0.72
9,237.0	89.60	89.79	7,150.9	-1,005.5	2,567.4	2,653.2	0.25	-0.20	0.16
9,319.7	90.47	90.40	7,150.9	-1,005.7	2,650.1	2,735.5	1.29	1.05	0.74
WP1									
9,329.0	90.57	90.47	7,150.8	-1,005.7	2,659.4	2,744.7	1.29	1.05	0.74
9,421.0	91.01	90.65	7,149.5	-1,006.6	2,751.4	2,836.4	0.52	0.48	0.20
9,513.0	90.40	91.95	7,148.4	-1,008.7	2,843.4	2,928.1	1.56	-0.66	1.41

Company:	Tekton Energy	Local Co-ordinate Reference:	Well Raindance 4 #1-1-32-090-4-NH
Project:	SEC.30-T6N-R67W	TVD Reference:	WELL @ 5004.5ft (Original Well Elev)
Site:	Raindance Pad Sec.30-T6N-R67W	MD Reference:	WELL @ 5004.5ft (Original Well Elev)
Well:	Raindance 4 #1-1-32-090-4-NH	North Reference:	True
Wellbore:	Wellbore #1	Survey Calculation Method:	Minimum Curvature
Design:	Wellbore #1	Database:	Landmark

Survey

Measured Depth (ft)	Inclination (°)	Azimuth (°)	Vertical Depth (ft)	+N/-S (ft)	+E/-W (ft)	Vertical Section (ft)	Dogleg Rate (°/100ft)	Build Rate (°/100ft)	Turn Rate (°/100ft)
9,605.0	89.52	93.16	7,148.4	-1,012.8	2,935.3	3,020.0	1.63	-0.96	1.32
9,697.0	88.90	92.04	7,149.7	-1,017.0	3,027.2	3,111.8	1.39	-0.67	-1.22
9,789.0	89.96	90.60	7,150.6	-1,019.1	3,119.1	3,203.6	1.94	1.15	-1.57
9,881.0	90.40	90.11	7,150.3	-1,019.7	3,211.1	3,295.2	0.72	0.48	-0.53
9,973.0	91.28	89.66	7,149.0	-1,019.5	3,303.1	3,386.7	1.07	0.96	-0.49
10,064.0	90.84	89.59	7,147.3	-1,018.9	3,394.1	3,477.2	0.49	-0.48	-0.08
10,156.0	89.69	89.77	7,146.9	-1,018.4	3,486.1	3,568.7	1.27	-1.25	0.20
10,248.0	90.31	90.19	7,146.9	-1,018.4	3,578.1	3,660.3	0.81	0.67	0.46
10,341.0	89.16	89.76	7,147.3	-1,018.3	3,671.1	3,752.8	1.32	-1.24	-0.46
10,433.0	89.60	90.18	7,148.3	-1,018.3	3,763.1	3,844.4	0.66	0.48	0.46
10,525.0	88.29	89.96	7,150.0	-1,018.4	3,855.1	3,936.0	1.44	-1.42	-0.24
10,616.0	88.72	89.82	7,152.4	-1,018.2	3,946.0	4,026.5	0.50	0.47	-0.15
10,710.0	88.99	89.15	7,154.2	-1,017.4	4,040.0	4,119.9	0.77	0.29	-0.71
10,803.0	90.13	89.66	7,155.0	-1,016.4	4,133.0	4,212.4	1.34	1.23	0.55
10,897.0	90.22	89.27	7,154.7	-1,015.5	4,227.0	4,305.8	0.43	0.10	-0.41
10,991.0	91.10	88.94	7,153.6	-1,014.1	4,321.0	4,399.2	1.00	0.94	-0.35
11,084.0	91.89	87.99	7,151.2	-1,011.6	4,413.9	4,491.5	1.33	0.85	-1.02
11,178.0	90.92	88.76	7,148.9	-1,008.9	4,507.9	4,584.7	1.32	-1.03	0.82
11,272.0	90.40	89.50	7,147.8	-1,007.5	4,601.8	4,678.1	0.96	-0.55	0.79
11,365.0	89.34	88.83	7,148.0	-1,006.1	4,694.8	4,770.5	1.35	-1.14	-0.72
11,459.0	89.43	87.83	7,149.0	-1,003.4	4,788.8	4,863.7	1.07	0.10	-1.06
11,552.0	89.60	89.24	7,149.8	-1,001.0	4,881.7	4,956.0	1.53	0.18	1.52
11,646.0	90.66	90.35	7,149.6	-1,000.7	4,975.7	5,049.6	1.63	1.13	1.18
11,740.0	90.92	90.27	7,148.3	-1,001.2	5,069.7	5,143.1	0.29	0.28	-0.09
11,820.4	90.39	89.98	7,147.4	-1,001.4	5,150.1	5,223.2	0.75	-0.66	-0.35
WP2									
11,833.0	90.31	89.94	7,147.3	-1,001.3	5,162.7	5,235.7	0.75	-0.66	-0.35
11,926.0	90.48	90.21	7,146.6	-1,001.5	5,255.7	5,328.3	0.34	0.18	0.29
12,019.0	89.78	91.05	7,146.4	-1,002.5	5,348.7	5,420.9	1.18	-0.75	0.90
12,113.0	91.01	91.50	7,145.8	-1,004.6	5,442.7	5,514.7	1.39	1.31	0.48
12,206.0	91.54	92.20	7,143.7	-1,007.6	5,535.6	5,607.4	0.94	0.57	0.75
12,300.0	89.96	92.36	7,142.5	-1,011.3	5,629.5	5,701.3	1.69	-1.68	0.17
12,393.0	89.52	92.05	7,142.9	-1,014.9	5,722.5	5,794.1	0.58	-0.47	-0.33
12,487.0	88.64	90.78	7,144.4	-1,017.2	5,816.4	5,887.8	1.64	-0.94	-1.35
12,581.0	90.31	89.40	7,145.3	-1,017.4	5,910.4	5,981.4	2.30	1.78	-1.47
12,675.0	90.48	89.65	7,144.6	-1,016.6	6,004.4	6,074.9	0.32	0.18	0.27
12,770.0	89.87	89.34	7,144.3	-1,015.8	6,099.4	6,169.3	0.72	-0.64	-0.33
12,864.0	90.57	88.93	7,144.0	-1,014.3	6,193.4	6,262.7	0.86	0.74	-0.44
12,958.0	90.66	88.59	7,143.0	-1,012.3	6,287.4	6,356.1	0.37	0.10	-0.36
13,053.0	89.43	88.81	7,142.9	-1,010.1	6,382.3	6,450.4	1.32	-1.29	0.23
13,147.0	90.75	89.54	7,142.7	-1,008.8	6,476.3	6,543.8	1.60	1.40	0.78
13,242.0	91.63	88.91	7,140.8	-1,007.5	6,571.3	6,638.2	1.14	0.93	-0.66
13,336.0	91.36	88.37	7,138.3	-1,005.3	6,665.2	6,731.5	0.64	-0.29	-0.57
13,431.0	89.96	88.07	7,137.2	-1,002.3	6,760.2	6,825.7	1.51	-1.47	-0.32
13,525.0	89.78	87.72	7,137.4	-998.9	6,854.1	6,918.8	0.42	-0.19	-0.37
13,619.0	90.84	88.03	7,136.9	-995.4	6,948.0	7,012.0	1.17	1.13	0.33
13,713.0	90.57	89.53	7,135.8	-993.4	7,042.0	7,105.3	1.62	-0.29	1.60
13,808.0	89.34	89.89	7,135.8	-992.9	7,137.0	7,199.8	1.35	-1.29	0.38
13,902.0	89.16	90.42	7,137.1	-993.2	7,231.0	7,293.4	0.60	-0.19	0.56
13,996.0	90.66	90.82	7,137.2	-994.2	7,325.0	7,387.0	1.65	1.60	0.43
14,090.0	91.54	90.14	7,135.4	-995.0	7,419.0	7,480.6	1.18	0.94	-0.72
14,121.4	91.25	90.37	7,134.6	-995.1	7,450.3	7,511.8	1.18	-0.93	0.73
WP3									
14,185.0	90.66	90.83	7,133.6	-995.8	7,513.9	7,575.2	1.18	-0.93	0.73

Company:	Tekton Energy	Local Co-ordinate Reference:	Well Raindance 4 #1-1-32-090-4-NH
Project:	SEC.30-T6N-R67W	TVD Reference:	WELL @ 5004.5ft (Original Well Elev)
Site:	Raindance Pad Sec.30-T6N-R67W	MD Reference:	WELL @ 5004.5ft (Original Well Elev)
Well:	Raindance 4 #1-1-32-090-4-NH	North Reference:	True
Wellbore:	Wellbore #1	Survey Calculation Method:	Minimum Curvature
Design:	Wellbore #1	Database:	Landmark

Survey

Measured Depth (ft)	Inclination (°)	Azimuth (°)	Vertical Depth (ft)	+N/-S (ft)	+E/-W (ft)	Vertical Section (ft)	Dogleg Rate (°/100ft)	Build Rate (°/100ft)	Turn Rate (°/100ft)
14,279.0	89.96	91.00	7,133.1	-997.3	7,607.9	7,668.9	0.77	-0.74	0.18
14,374.0	90.13	90.09	7,133.0	-998.2	7,702.9	7,763.5	0.97	0.18	-0.96
14,468.0	89.60	89.60	7,133.2	-997.9	7,796.9	7,857.1	0.77	-0.56	-0.52
14,563.0	88.72	89.68	7,134.6	-997.3	7,891.9	7,951.5	0.93	-0.93	0.08
14,657.0	88.72	90.66	7,136.7	-997.6	7,985.9	8,045.1	1.04	0.00	1.04
14,751.0	89.43	91.83	7,138.2	-999.6	8,079.8	8,138.8	1.46	0.76	1.24
14,845.0	89.87	91.41	7,138.8	-1,002.3	8,173.8	8,232.6	0.65	0.47	-0.45
14,940.0	90.57	90.99	7,138.4	-1,004.3	8,268.8	8,327.3	0.86	0.74	-0.44
15,034.0	90.48	89.98	7,137.6	-1,005.1	8,362.8	8,420.9	1.08	-0.10	-1.07
15,128.0	90.40	89.30	7,136.9	-1,004.5	8,456.8	8,514.4	0.73	-0.09	-0.72
15,222.0	89.78	88.43	7,136.7	-1,002.6	8,550.8	8,607.8	1.14	-0.66	-0.93
15,317.0	90.22	88.62	7,136.7	-1,000.2	8,645.7	8,702.0	0.50	0.46	0.20
15,410.0	90.57	90.11	7,136.1	-999.2	8,738.7	8,794.5	1.65	0.38	1.60
15,504.0	90.92	90.03	7,134.9	-999.3	8,832.7	8,888.0	0.38	0.37	-0.09
15,597.0	90.57	90.10	7,133.6	-999.4	8,925.7	8,980.6	0.38	-0.38	0.08
15,691.0	89.60	91.84	7,133.5	-1,001.0	9,019.7	9,074.3	2.12	-1.03	1.85
15,786.0	89.60	91.07	7,134.2	-1,003.4	9,114.6	9,169.0	0.81	0.00	-0.81
15,881.0	90.22	90.79	7,134.3	-1,004.9	9,209.6	9,263.7	0.72	0.65	-0.29
15,975.0	91.01	90.40	7,133.3	-1,005.9	9,303.6	9,357.4	0.94	0.84	-0.41
16,070.0	89.34	90.46	7,133.0	-1,006.6	9,398.6	9,452.0	1.76	-1.76	0.06
16,164.0	89.25	89.79	7,134.2	-1,006.8	9,492.6	9,545.5	0.72	-0.10	-0.71
16,258.0	88.20	88.47	7,136.3	-1,005.4	9,586.6	9,638.9	1.79	-1.12	-1.40
16,353.0	87.49	88.28	7,139.8	-1,002.7	9,681.5	9,733.1	0.77	-0.75	-0.20
16,447.0	86.88	88.74	7,144.5	-1,000.3	9,775.3	9,826.3	0.81	-0.65	0.49
16,540.0	88.90	90.86	7,147.9	-999.9	9,868.2	9,918.7	3.15	2.17	2.28
16,634.0	90.31	90.91	7,148.5	-1,001.4	9,962.2	10,012.4	1.50	1.50	0.05
16,729.0	91.71	89.67	7,146.9	-1,001.9	10,057.2	10,107.0	1.97	1.47	-1.31
16,824.0	91.98	89.00	7,143.8	-1,000.8	10,152.1	10,201.4	0.76	0.28	-0.71
16,918.0	94.09	87.29	7,138.8	-997.7	10,246.0	10,294.4	2.89	2.24	-1.82
17,000.0	94.09	87.29	7,133.0	-993.9	10,327.7	10,375.4	0.00	0.00	0.00

BHL 825'FNL & 460'FEL, Sec.33

Checked By: _____ Approved By: _____ Date: _____