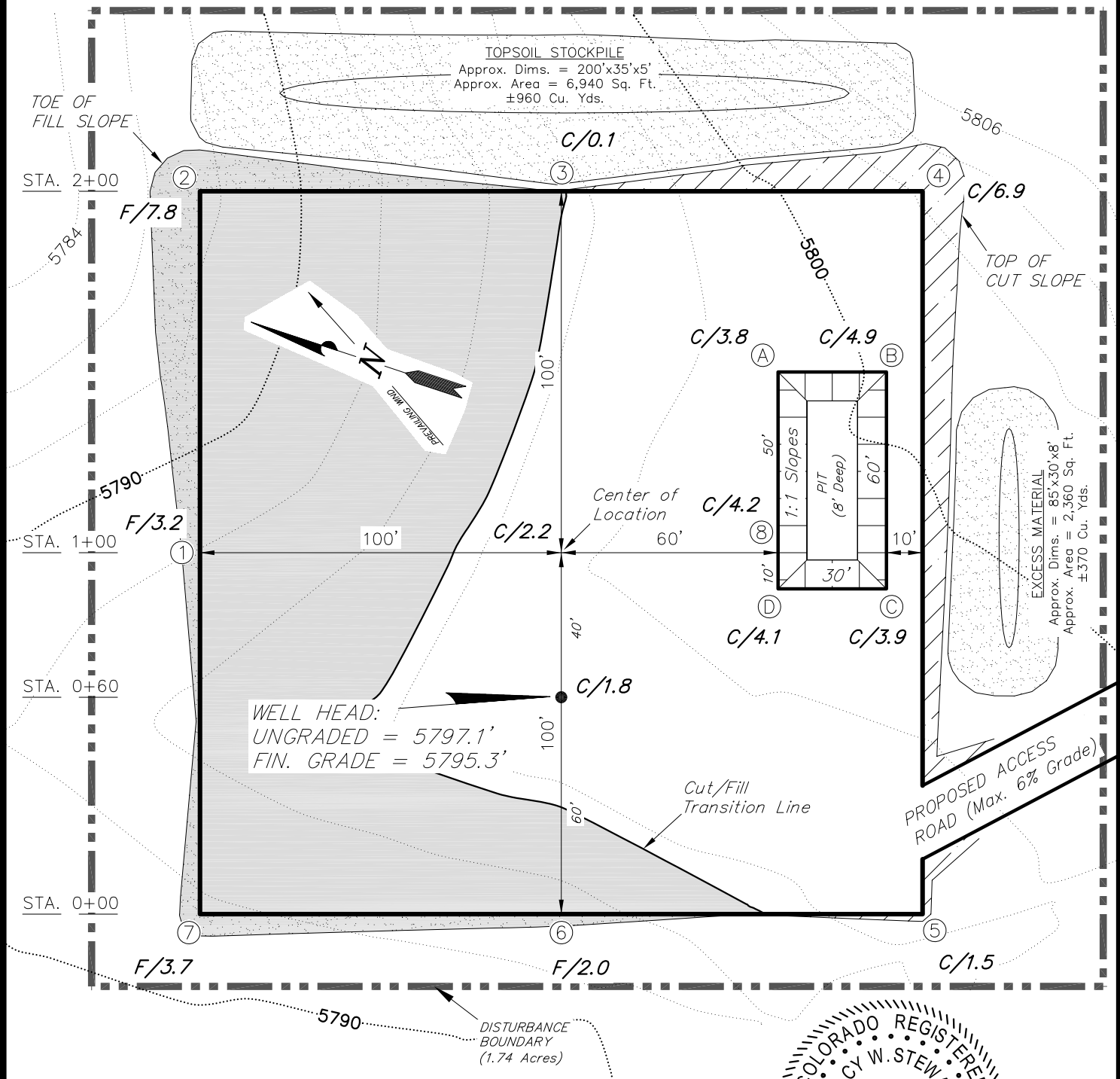


# AUS-TEX EXPLORATION INC

## LOCATION LAYOUT PATHFINDER C18 #8

Pad Location: NWNE Section 18, T20S, R69W, 6th P.M.

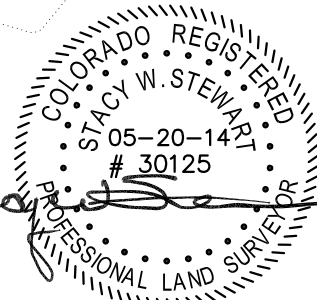


### NOTE:

The topsoil material stockpile areas are calculated as being mounds containing 1,330 cubic yards of dirt (a 10% fluff factor is included). The mound areas are calculated with push slopes of 1.5:1 & fall slopes of 1.5:1.

### REFERENCE POINTS

150' SOUTHEASTERLY - 5790.4'  
200' SOUTHEASTERLY - 5788.6'  
150' SOUTHWESTERLY - 5797.8'  
200' SOUTHWESTERLY - 5808.9'



SURVEYED BY: D.P. DATE SURVEYED: 05-06-14  
DRAWN BY: M.W. DATE DRAWN: 05-20-14  
SCALE: 1" = 40' REVISED:

**Tri State**  
Land Surveying, Inc.  
(435) 781-2501  
180 NORTH VERNAL AVE. VERNAL, UTAH 84078

SHEET  
3