

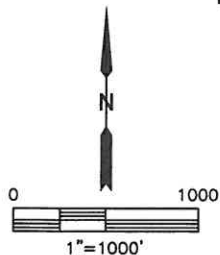
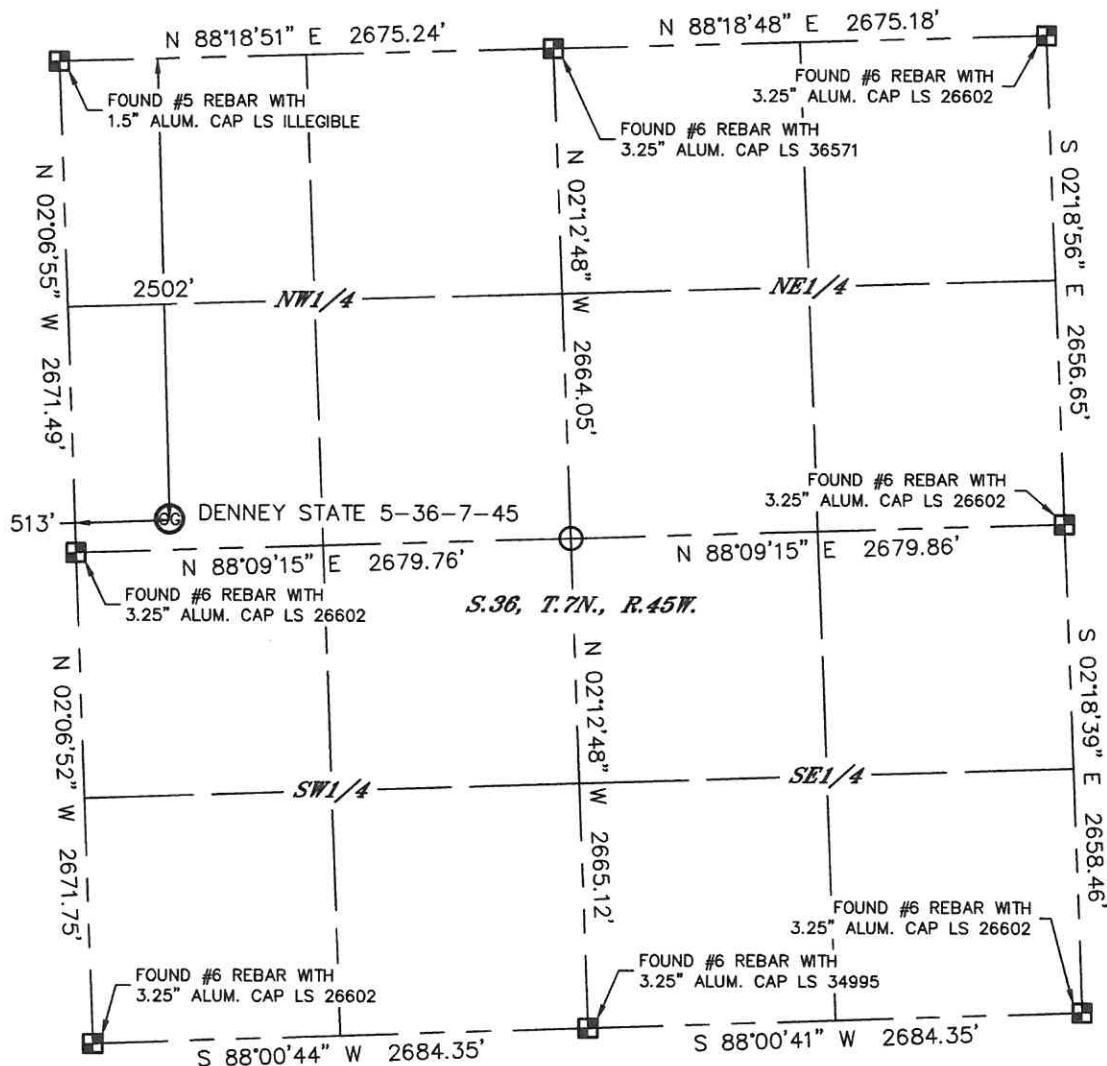


Lat40°, Inc. 1635 Foxtrail Drive, Suite 325 Loveland, CO 970-776-3321

## WELL LOCATION CERTIFICATE

THIS MAP DOES NOT REPRESENT A BOUNDARY SURVEY

SECTION: 36  
TOWNSHIP: 7N  
RANGE: 45W



In accordance with a request from Michelle Lewis with Omimex Petroleum, Inc.

Lat40°, Inc. has determined the surface location of the DENNEY STATE 5-36-7-45 to be 2502' from the NORTH line and 513' from the WEST line as measured at right angles from the section lines of Section 36, Township 7 North, Range 45 West of the Sixth Principal Meridian, County of Phillips, State of Colorado.

I hereby state that this Well Location Certificate was prepared by me, or under my direct supervision, that the fieldwork was completed on 12/7/2013, for and on behalf of Omimex Petroleum, Inc. That this is not a Land Survey Plat or an Improvement Survey Plat, and that it is not to be relied upon for establishment of fence, building, or other future improvement lines.

### SURFACE LOCATION

LAT: 40.53514°N  
LONG: 102.33855°W  
PDOP: 2.6  
ELEV: 3777'  
1/4, 1/4: SW1/4NW1/4

### NOTE:

- 1) Bearings shown are Grid Bearings of the Colorado State Plane Coordinate System, North Zone, North American Datum 1983/2007. The lineal dimensions as contained herein are based upon the "U.S. Survey Foot."
- 2) Ground elevations are based on an observed GPS elevation (NAVD 1988 DATUM).
- 3) IMPROVEMENTS: See LOCATION DRAWING for all visible improvements within 500' of disturbed area.
- 4) SURFACE USE: CROP LAND
- 5) INSTRUMENT OPERATOR: WYATT HALL
- 6) NEAREST CULTURAL ITEMS:  
BUILDING: ±720' SW  
BUILDING UNIT: ±720' SW  
HIGH OCCUPANCY BUILDING UNIT: 5280'+  
DESIGNATED OUTSIDE ACTIVITY AREA: 5280'+  
PUBLIC ROAD: (CR 35) 500' W  
ABOVEGROUND UTILITY: 544' W  
RAILROAD: 5280'+  
PROPERTY LINE: 168' S

### LEGEND

- = ALIQUOT MONUMENT AS DESCRIBED  
○ = CALCULATED POSITION



Kyle E. Rutz—On behalf of Lat40°, Inc.  
Colorado Licensed Professional  
Land Surveyor No. 38307

DATE: 1/27/2014  
PROJECT#: 2013175