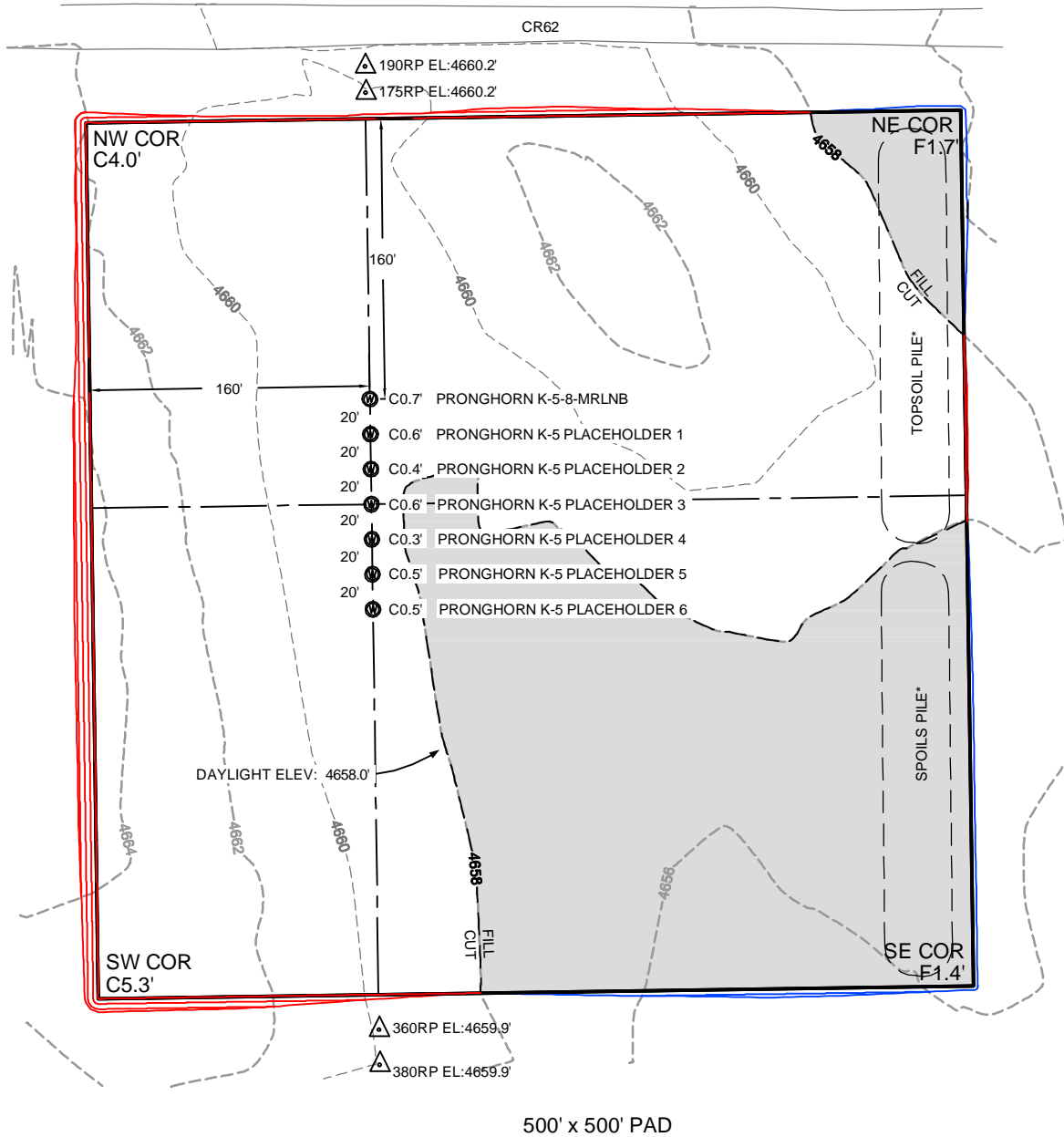


C:\FES PROJECTS\1319-01_BONANZA\5N-61W.dwg, 5N-61W LAYOUT.dwg, 2014-03-17 08:23



500' x 500' PAD

DESIGN INFORMATION & EARTH VOLUMES

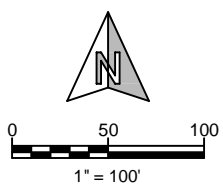
EXISTING GRADE @ CENTER LOCATION = 4,658.6'
 FINISHED GRADE ELEVATION = 4,658.0'
 CUT SLOPES = 1.5:1
 FILL SLOPES = 1.5:1
 TOTAL CUT FOR WELL PAD = 15,995 C.Y.
 TOTAL FILL FOR WELL PAD = 3,111 C.Y.
 TOPSOIL @ 6" DEPTH (ESTIMATED)= 2,000 C.Y.
 SHRINKAGE (10%) = 1,082 C.Y.
 EXCESS MATERIAL = 9,802 C.Y.
 * CONTRACTOR SHALL PLACE TOPSOIL & SPOILS PILES ON PAD AT OWNERS DISCRETION

SHEET NO:

1 of 1



Drawn By: DAF
Checked By: DDF
Date: 3/17/14
Revision:
Date:
Explanation:



PAD CUT/FILL LAYOUT

PRONGHORN K-5 PAD
 NW¼NE¼ (LOT 2), SECTION 5,
 T.5N., R.61W., 6th PM
 WELD COUNTY, COLORADO

