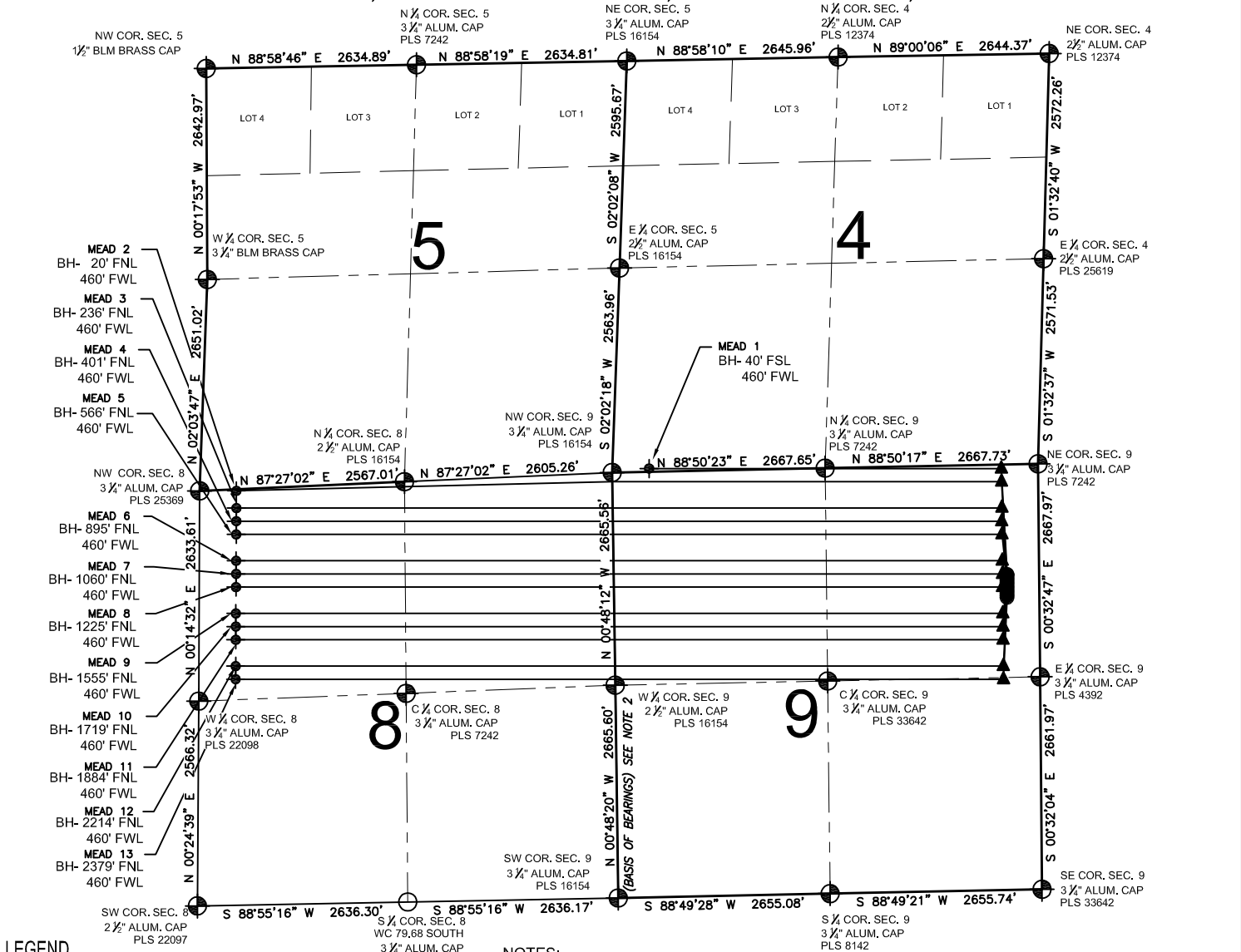


MEAD 9-E PAD MULTI-WELL PLAN

SECTION 9, TOWNSHIP 7 NORTH, RANGE 66 WEST, 6TH P.M.



LEGEND

- = EXISTING MONUMENT
- = CALCULATED POSITION
- = PROPOSED WELL
- BH = BOTTOM HOLE
- ◆ = BOTTOM HOLE
- ▲ = LANDING POINT
- LP = LANDING POINT

NOTES:

- THIS FIELD SURVEY CONFORMS TO THE MINIMUM STANDARDS SET BY THE C.O.G.C.C., RULE NO. 215
- BEARINGS AND DISTANCE SHOWN HEREON ARE GRID AND BASED ON THE COLORADO STATE PLANE COORDINATE SYSTEM, NAD 83/2011 BETWEEN MONUMENTS AS LABELED HEREON AND ELEVATIONS SHOWN ARE NAVD 88, AS DERIVED BY GPS OBSERVATIONS.
- GRID DISTANCES ARE SHOWN, AS MEASURED IN THE FIELD, WITH TIES TO WELLS MEASURED PERPENDICULAR TO SECTION LINES.

PREPARED BY:



EXTRACTION OIL & GAS

| | |
|---------------------------|---|
| FIELD DATE: 05-23-14 | PAD NAME: MEAD 9-E PAD |
| DRAWING DATE: 07-24-14 | SURFACE LOCATION: SE 1/4 NE 1/4, SEC. 9, T7N, R66W, 6TH P.M. |
| BY: WDW | CHECKED: MLP |
| | WELD COUNTY, COLORADO |

