

RADIAL CEMENT BOND
GAMMA RAY
CCL

Company KERR McGEE OIL AND GAS
Well WARDELL 14-29
Field WATTENBERG
County WELD State CO

Location: API # : 05-123-25836
SHL 460' FSL & 2170' FWL SE/SW
Other Services
SEC 29 TWP 3N RGE 65W
Permanent Datum GL Elevation 4877'
Log Measured From KB 16'
Drilling Measured From KB

Date 7-31-2014

Run Number ONE
Depth Driller 7390'
Depth Logger 1673'
Bottom Logged Interval 1670'
Top Log Interval 20'
Open Hole Size 7.875
Type Fluid WATER
Density / Viscosity 1.0
Max. Recorded Temp. 96 DEG F
Estimated Cement Top 100'
Time Well Ready N/A
Time Logger on Bottom N/A
Equipment Number 4310
Location GREELEY
Recorded By N. BREHMER
Witnessed By M. VANDAGRIF

Borehole Record				Tubing Record			
Run Number	Bit	From	To	Size	Weight	From	To
ONE							
TWO							

Casing Record	Size	Wgt/Ft	Top	Bottom
Surface String	8.63	24#	SURFACE	772'
Prot. String				
Production String	4.5	11.6#	SURFACE	7382'
Liner				

<<< Fold Here >>>

All interpretations are opinions based on inferences from electrical or other measurements and we cannot and do not guarantee the accuracy or correctness of any interpretation, and we shall not, except in the case of gross or willful negligence on our part, be liable or responsible for any loss, costs, damages, or expenses incurred or sustained by anyone resulting from any interpretation made by any of our officers, agents or employees. These interpretations are also subject to our general terms and conditions set out in our current Price Schedule.



Comments

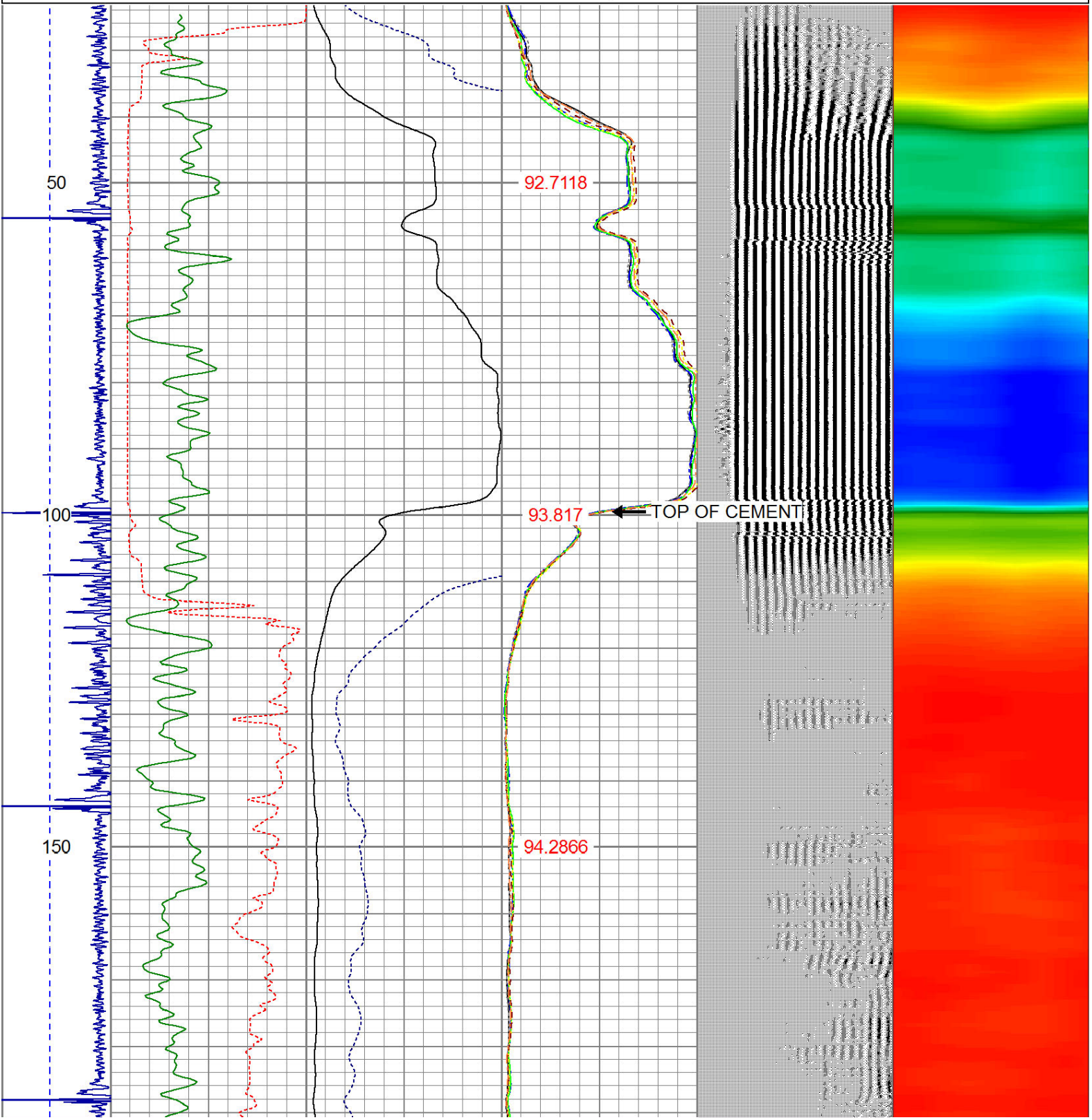
RAN CBL TO VERIFY CEMENT BOND

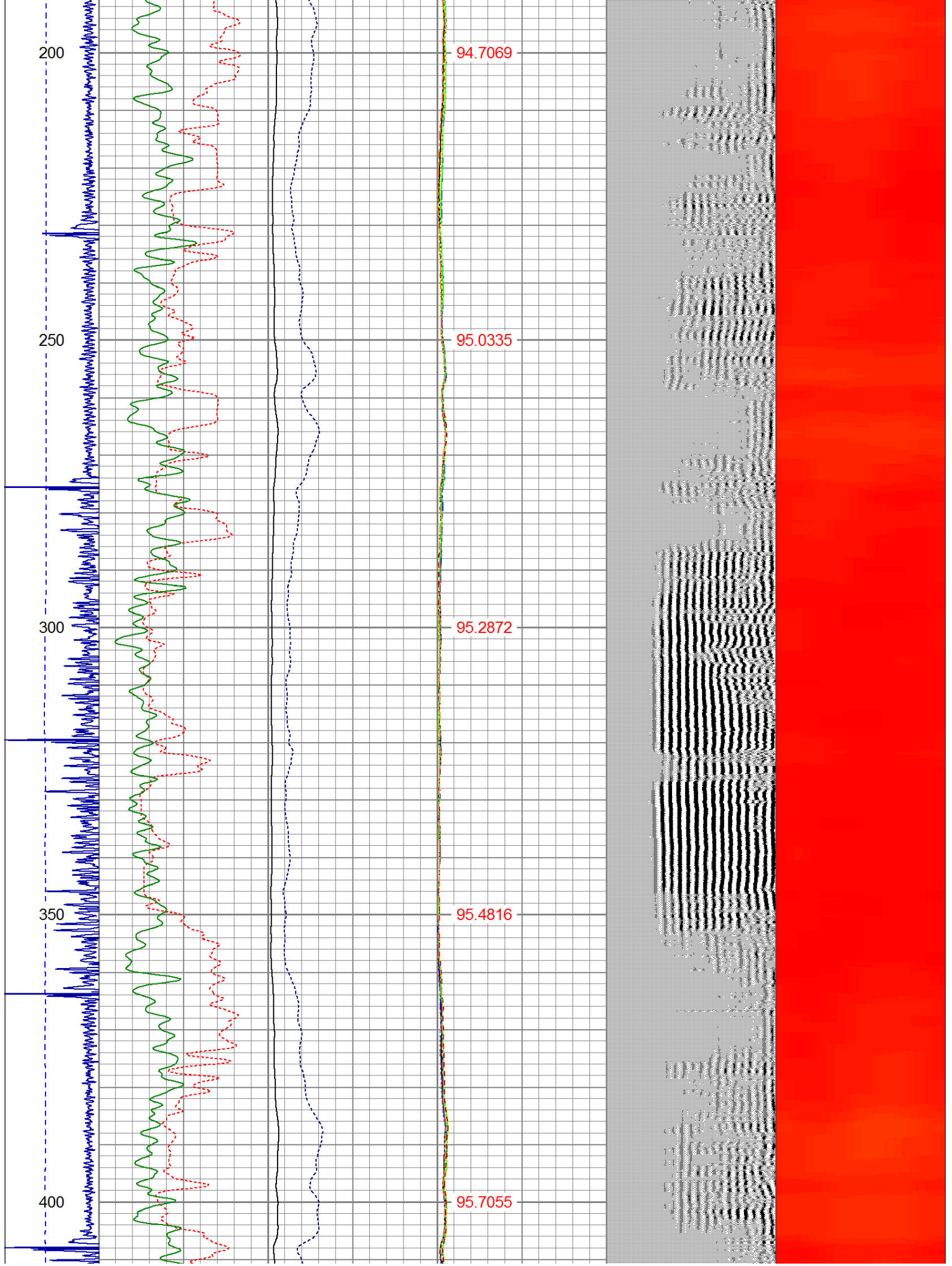
THANK YOU FOR USING WARRIOR !!!!!!!

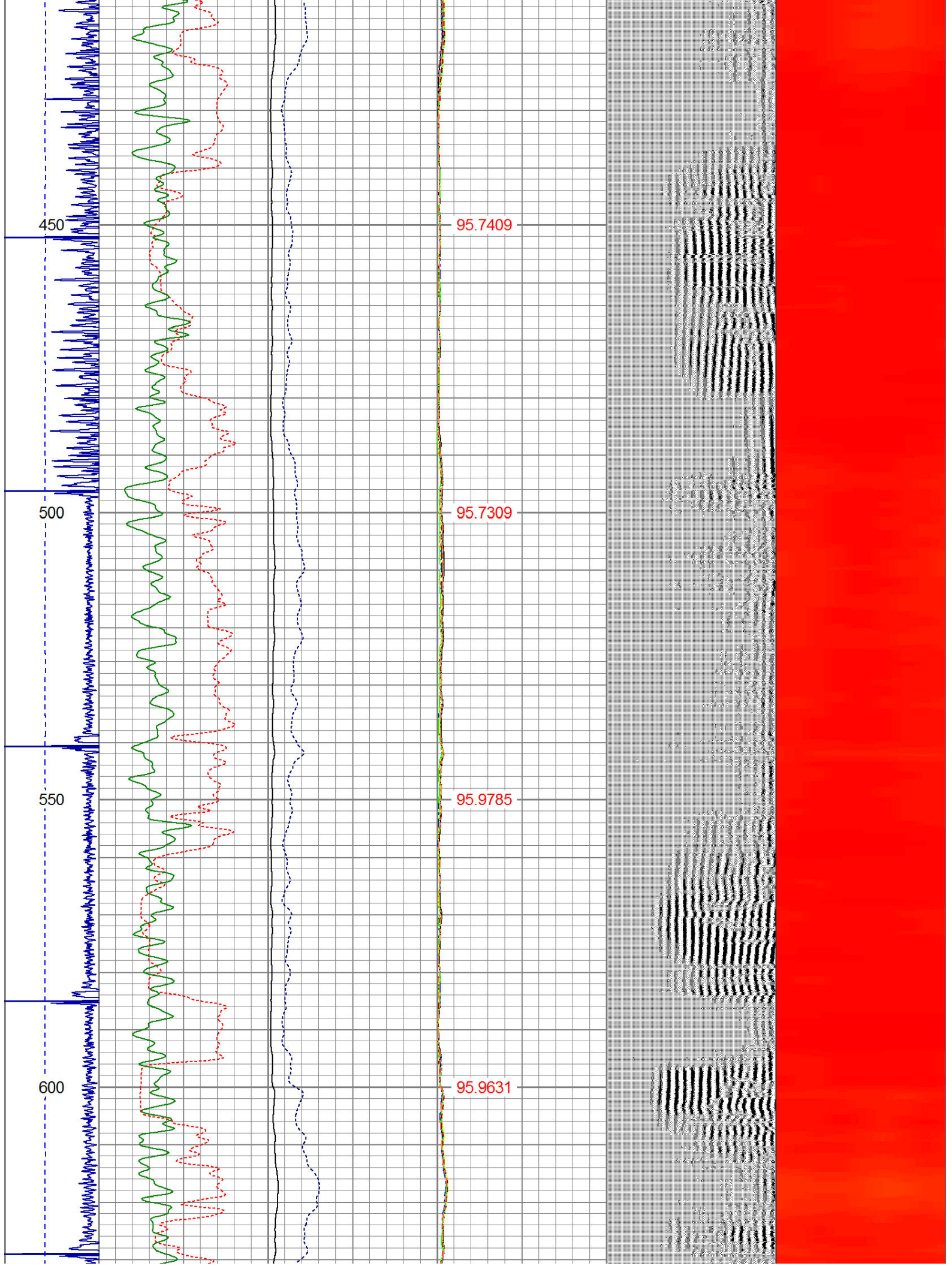
Sensor	Offset (ft)	Schematic	Description	Len (ft)	OD (in)	Wt (lb)

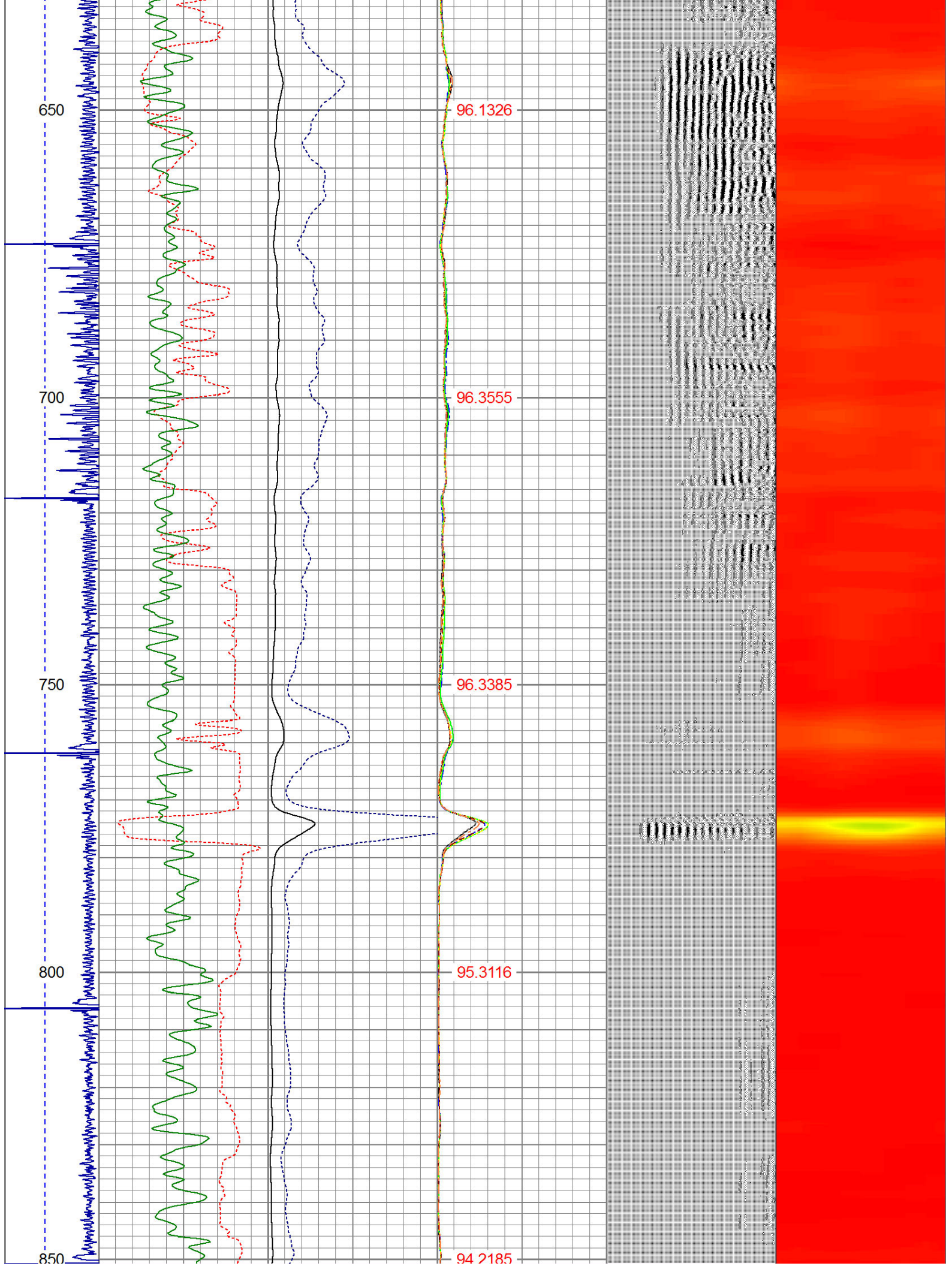
CNLSC	17.75			CNT-Probe_B (275) 6 bow centralizer	3.00	2.75	40.00
CNSSC	16.92						
HEADVOLT	16.08						
IntTemp	14.67						
WVF3FT	11.42			RBT-Probe (Base) Probe Radii Bond Tool with Digital Telemetry	8.92	2.75	90.00
WVFCAL	11.42						
WVFS1	11.42						
WVFS2	11.42						
WVFS3	11.42						
WVFS4	11.42						
WVFS5	11.42						
WVFS6	11.42						
WVFS7	11.42						
WVFS8	11.42						
WVF5FT	10.42						
				PTS275	2.83	2.75	
CCL	3.64						
				GR-Probe (275) Probe 2.75"	4.33	2.75	30.00
GR	0.90						
Dataset: wardell 19-24.db: field/well/run1/pass4 Total Length: 19.08 ft Total Weight: 160.00 lb O.D. 2.75 in							

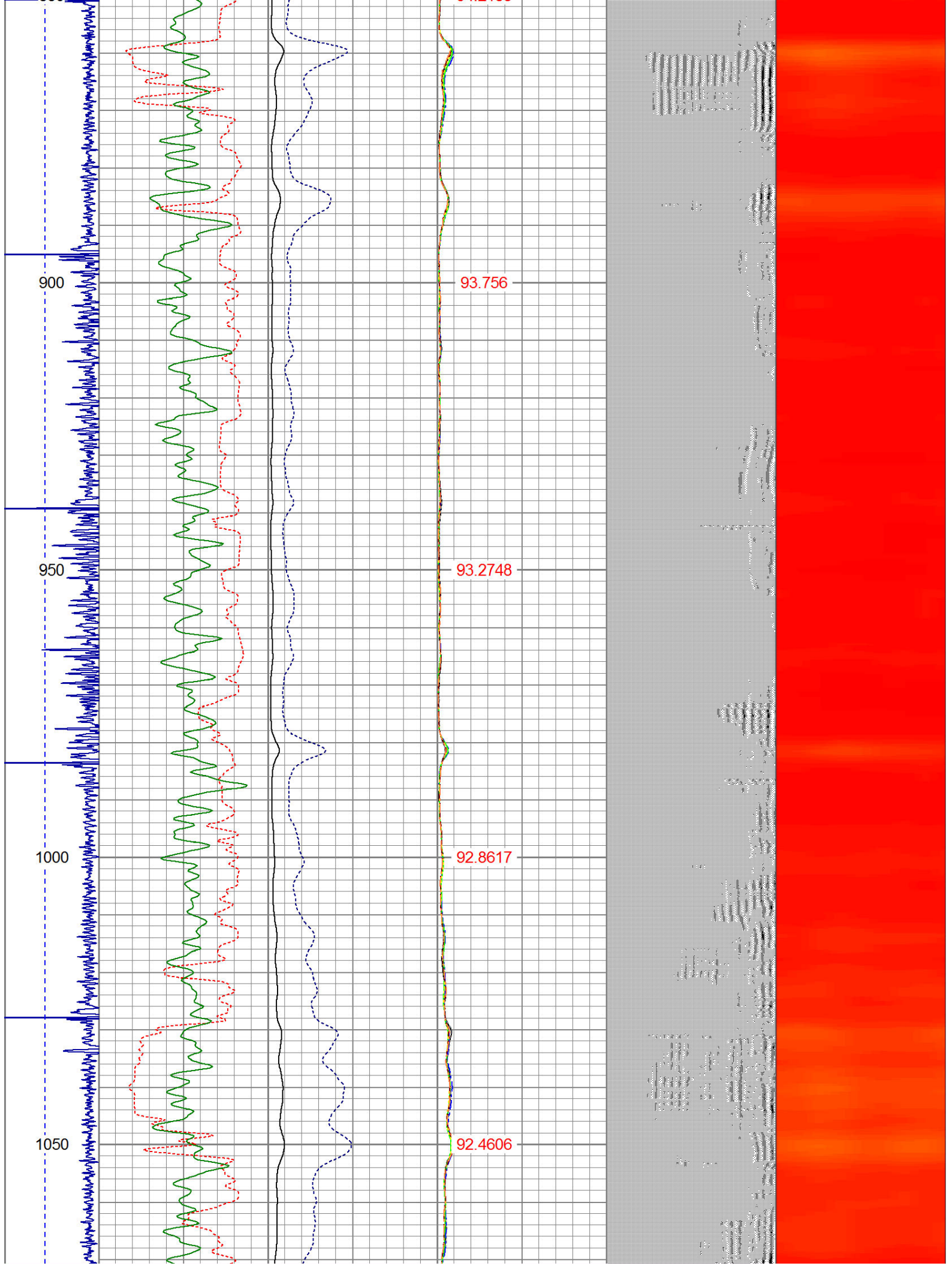
Dataset Creation: Thu Jul 31 07:07:05 2014 by Log 7.0 B1																																								
Charted by: Depth in Feet scaled 1:240																																								
-9	CCL	1	200	TT (usec)	1000	0	AMP (mV)	100	0	AMPS1	100	200	VDL	1200	1	Cement Map	8																							
LSPD (ft/min)	0		0	GR (GAPI)	200	0	AMPx5 (mV)	20	0	AMPS2	100			1				100																						
	200		200	GR (GAPI)	400					0	AMPS4	100																												
	0		250							0	AMPS5	100																												
													0					AMPS6	100																					
													0					AMPS7	100																					
													0					AMPS8	100																					
													IntTemp																											
										(degF)																														

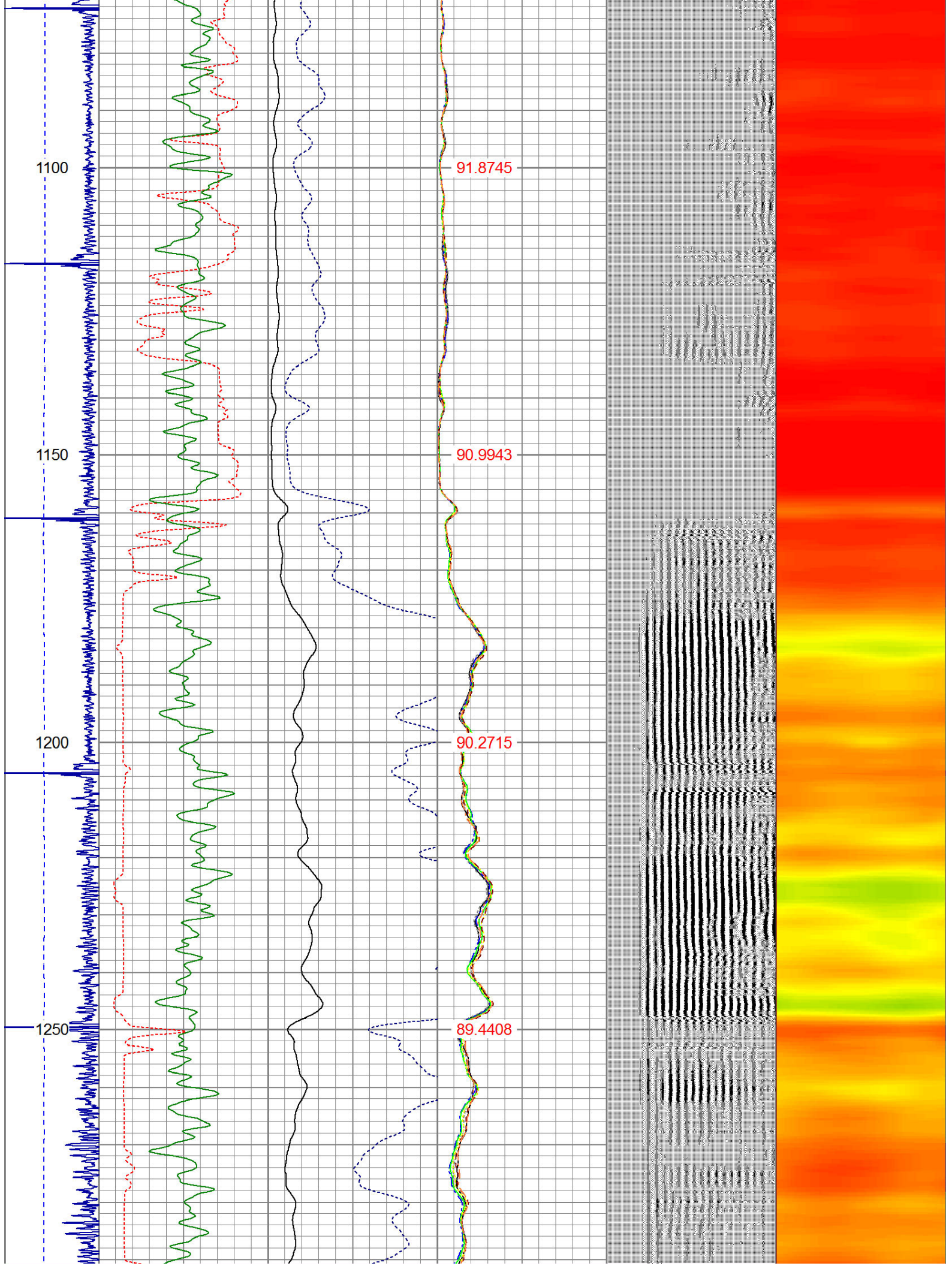


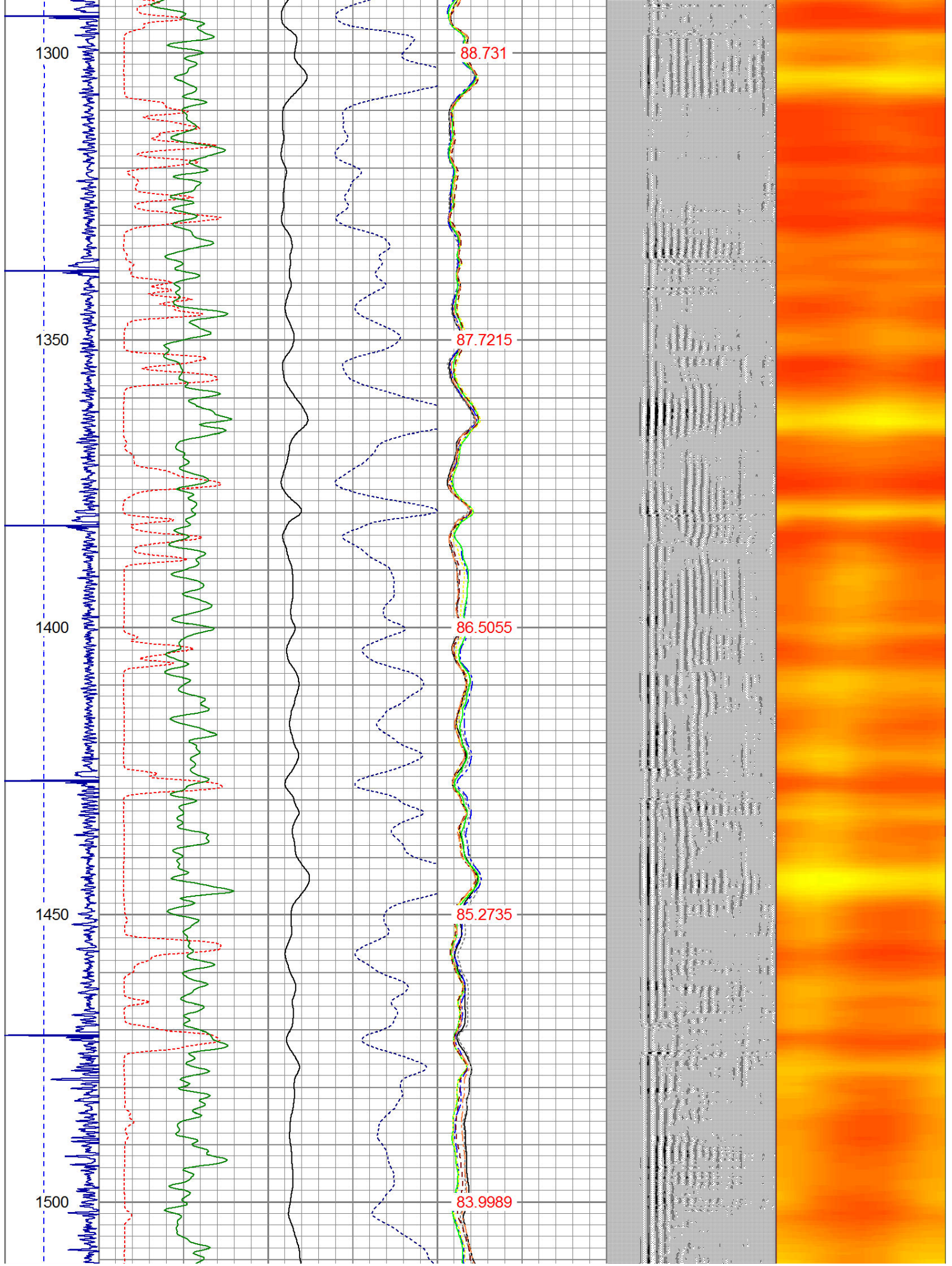


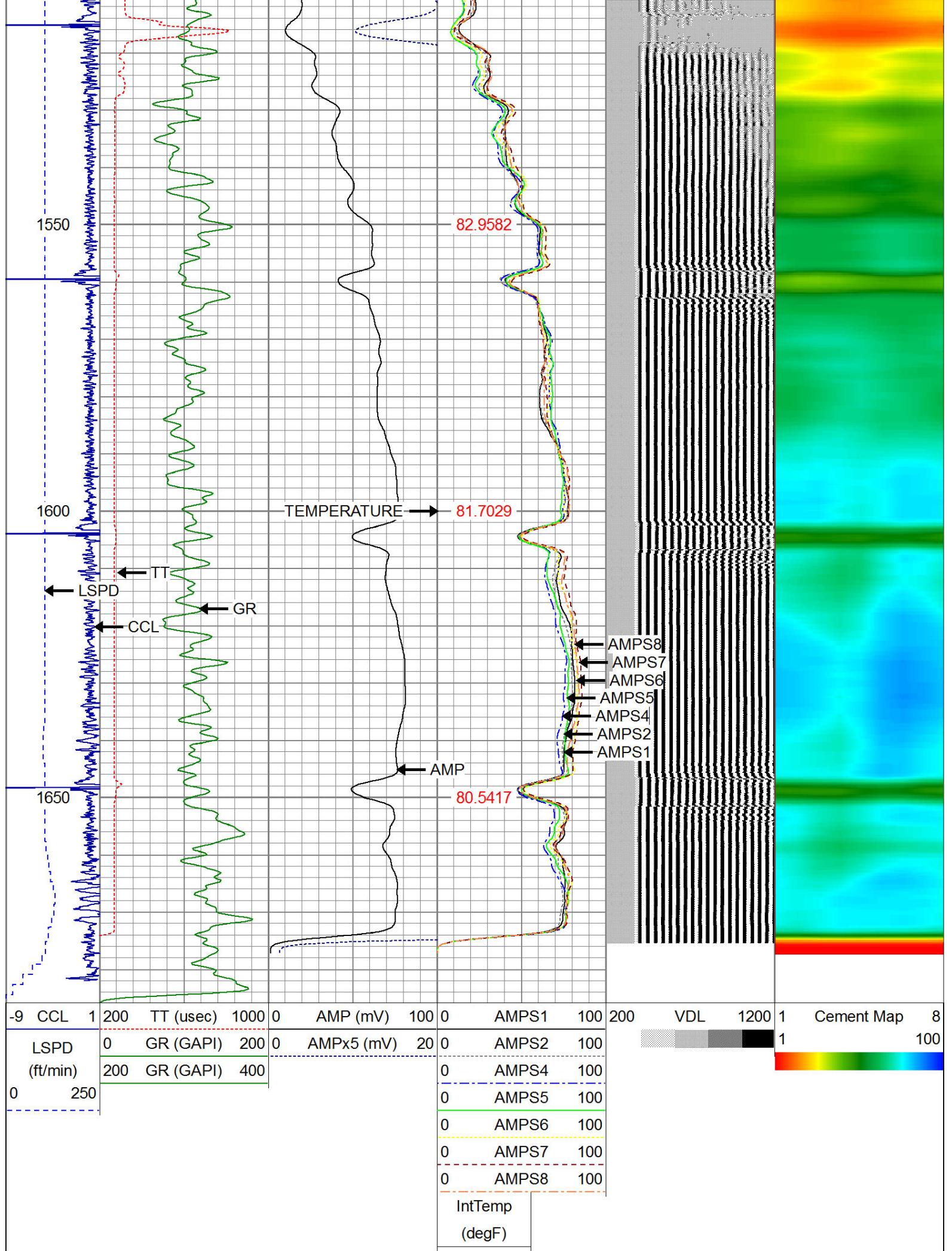














WARRIOR

ENERGY SERVICES

Company KERR MCGEE OIL AND GAS

Well WARDELL 14-29

Field WATTENBERG

County WELD

State CO